



12/15/2022

Hello City of Burleson,

We'd like to thank you for taking the time and consideration to review our variance application(s). We are applying for a variance on 2 different signs. We will layout our variance request and the ordinance to which it is applied to below.

Variance #1 is for Sign 1 is in opposition to ordinance that states, "(19)Roof signs as defined in section 63-20 of this chapter. Roof sign means a wall sign erected in whole or in part on a roof, or against, or directly above the highest point of the roofline, parapet, fascia of the building or above the surface of an awning or canopy."

This is a staple in the Razzoos franchise that we would like the city to consider allowing this to keep the look of the restaurant in line with the national brand.

Variance #2 is for Sign 3 is in opposition to the ordinance 63-37. (c) that states, " Number of Signs. One per building elevation."

We are wanting the city to consider allowing this to to ensure there is no confusion as to the purpose of the entrance given its proximity to the entrance to be used by the tenants of the second floor.

We've also attached a clearer version of the sign plans for your review.

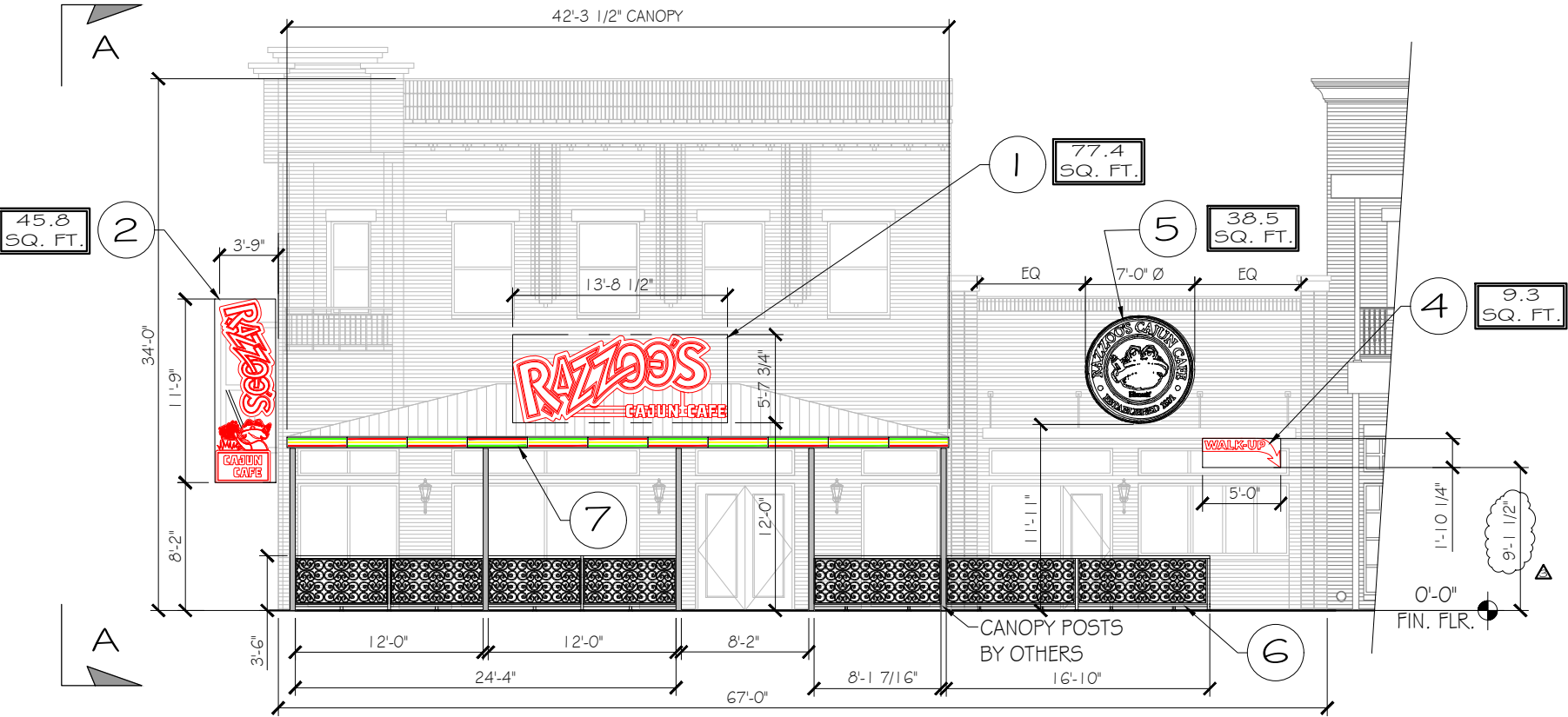
We look forward to discussing these sign variances with the city soon. Again, we appreciate the city's time and consideration in our sign variance applications.

Thank you,

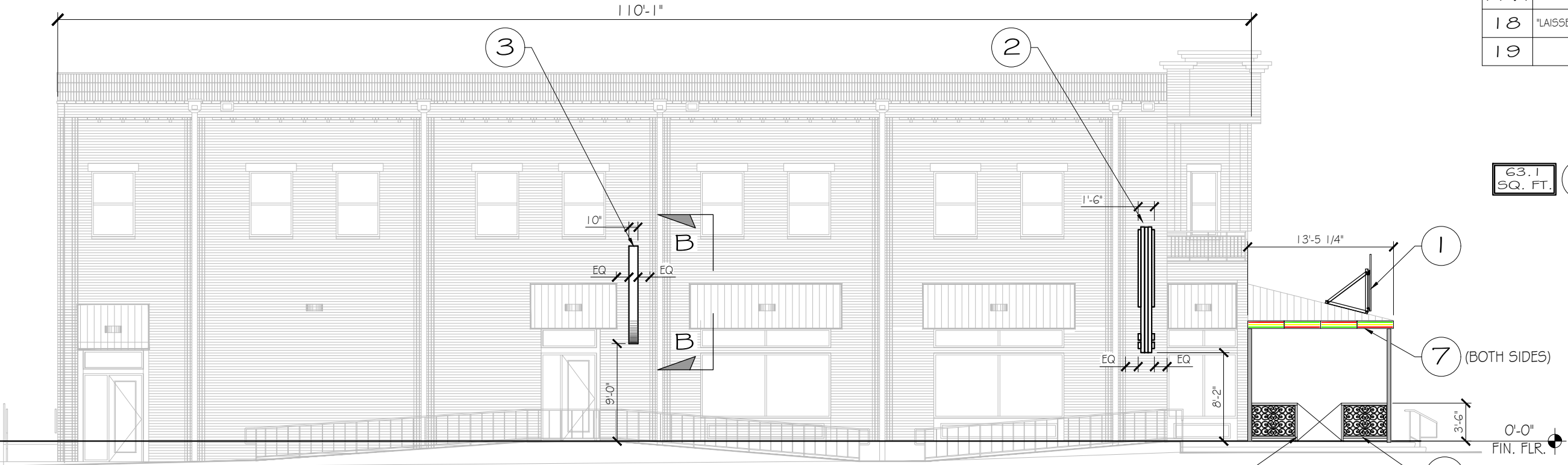
Tommy Tanner
Mello Signs
Permit Manager

A handwritten signature in black ink that reads 'Tommy Tanner' in a cursive script.

EXTERIOR SIGNAGE			
ITEM#	DESC.	APPROX. SQ. FOOTAGE	DWG#
1	MAIN ENTRY SIGNAGE	77.4 - SQ. FT.	-EXT-1.0
2	D/F BLADE SIGN	57.9 - SQ. FT.	-EXT-2.0
3	DF BLADE SIGN "TO-GO"	63.1 - SQ. FT.	-EXT-3.0
4	"WALK UP" SIGNAGE	9.3 - SQ. FT.	-EXT-4.0
5	"HIMSELF" GRAPHIC (VINYL)	38.5 - SQ. FT.	-EXT-5.0
6	PATIO DISTRACTION PANELS	N/A	-EXT-6.0
7	CANOPY NEON PANELS	N/A	-EXT-7.0
8	NOT USED		
9	NOT USED		
INTERIOR SIGNAGE			
ITEM#	DESC.	DWG#	QTY
10	LE BAIN WALL GRAPHIC	-INT-10.0	
11	"RAT TOES" SIGNAGE	-INT-11.0 # -INT-11.1	
12	"FISH" SIGNAGE	-INT-12.0	
13	"LIVE BAIT" SIGNAGE	-INT-13.0	
14	"MINNOWS WORMS" SIGNAGE	-INT-14.0	
15	"SERVICE" SIGNAGE	-INT-15.0	
16	WELCOME/EXIT SIGNAGE	-INT-16.0	
17	LICENSE PLATE GRAPHIC	-INT-17.0	
17.1	BAR LED ROPE NEON	-INT-17.1	
18	"LAISSEZ LES BON TEMPS....." SIGNAGE	-INT-18.0	
19	"HIMSELF" MEDALLION	-INT-19.0	

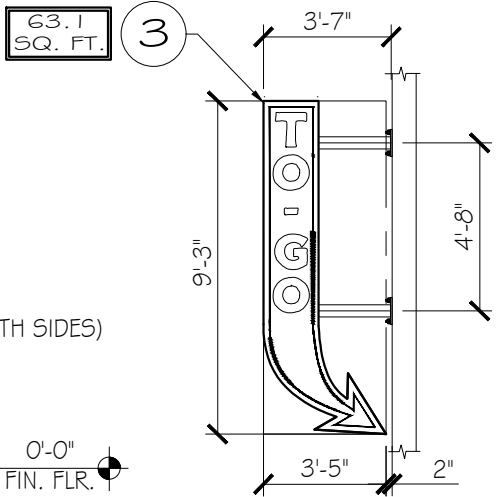


FRONT ENTRANCE ELEV. (W. ELLISON ST.)
SCALE: 3/32" = 1'-0"



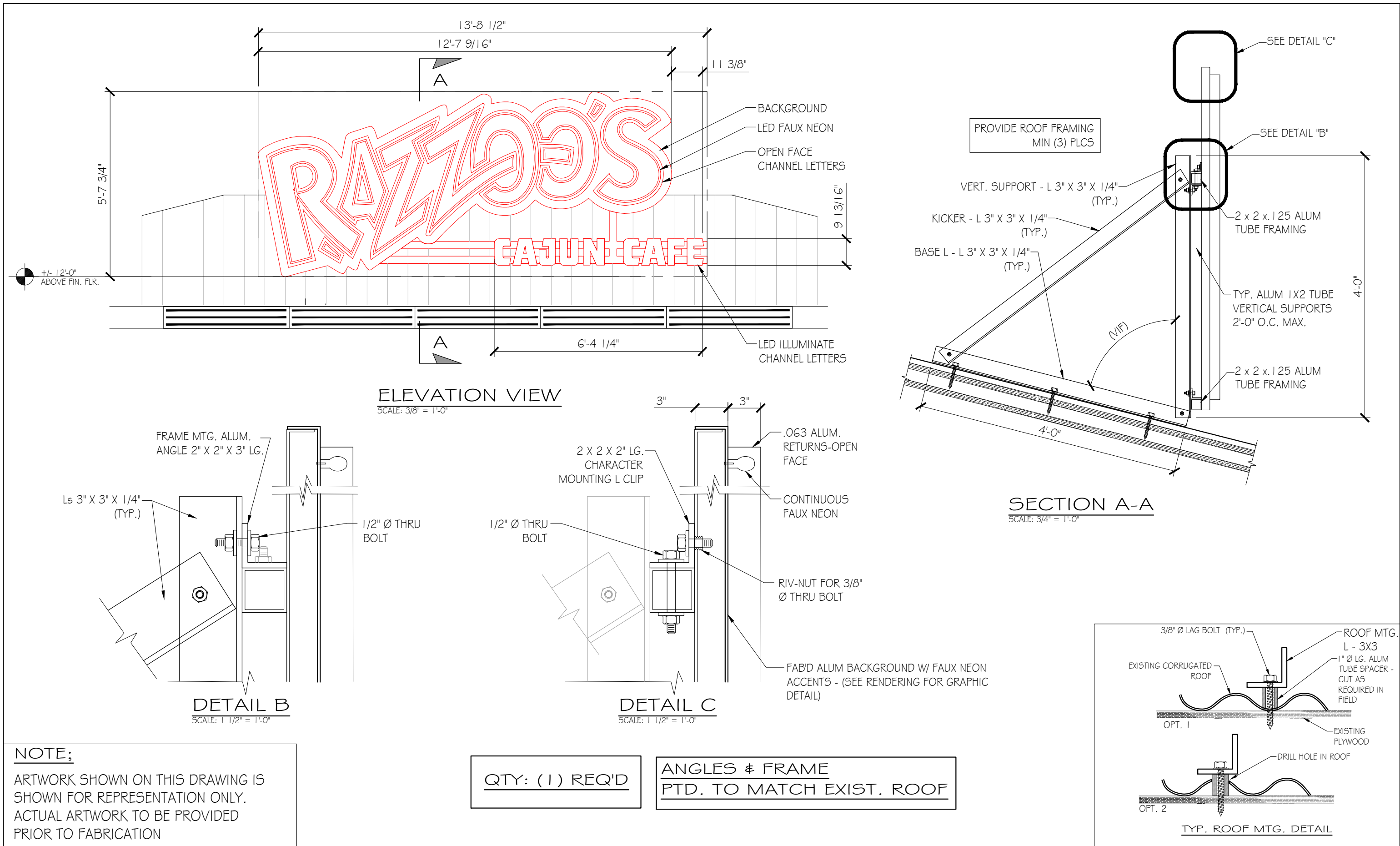
VIEW A-A (S. WILSON ST. ELEV.)
SCALE: 3/32" = 1'-0"

(SIM. 4 PLCS)
SEE PATIO PLAN DWG# -EXT-6.0



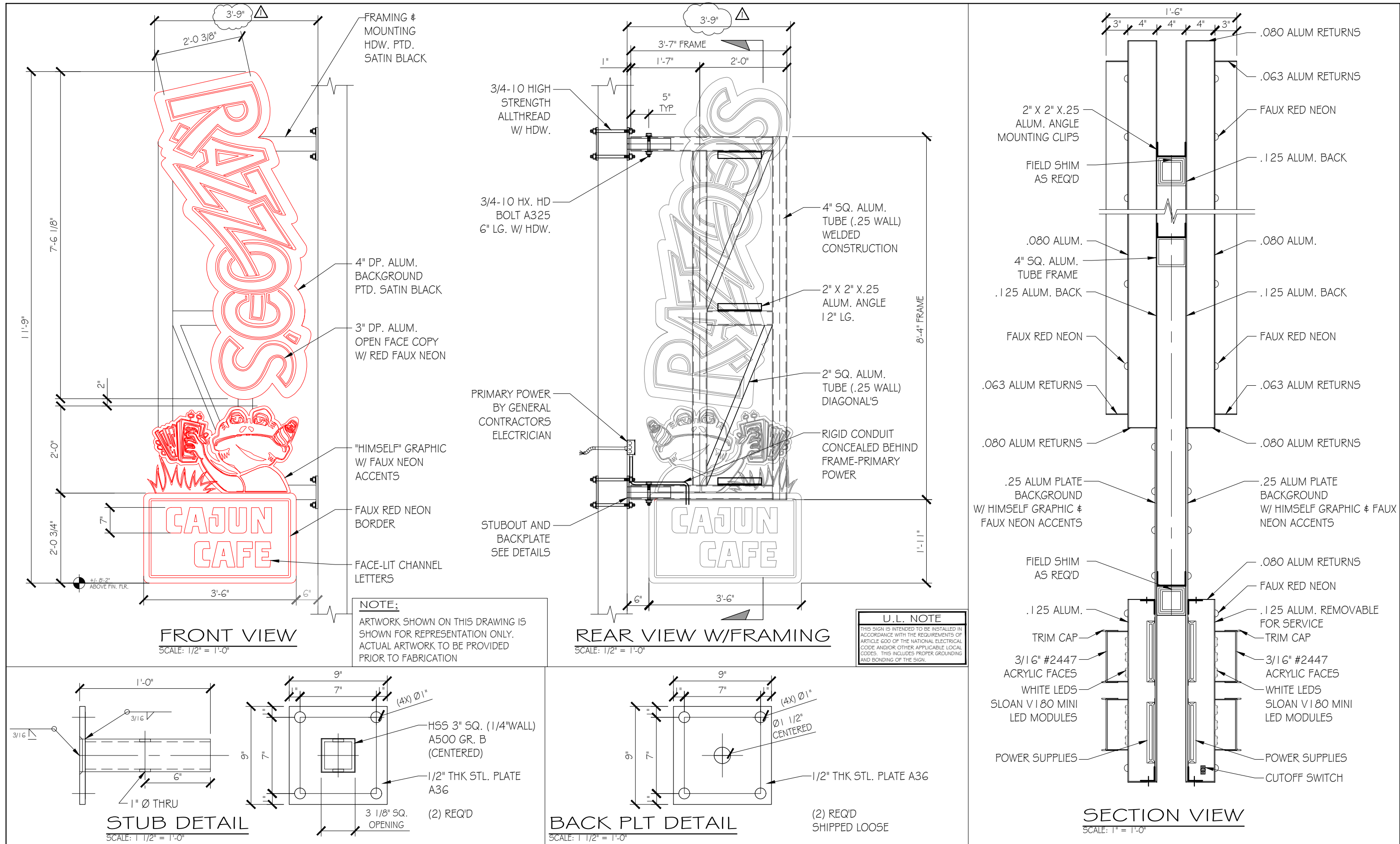
VIEW B-B
SCALE: 3/16" = 1'-0"

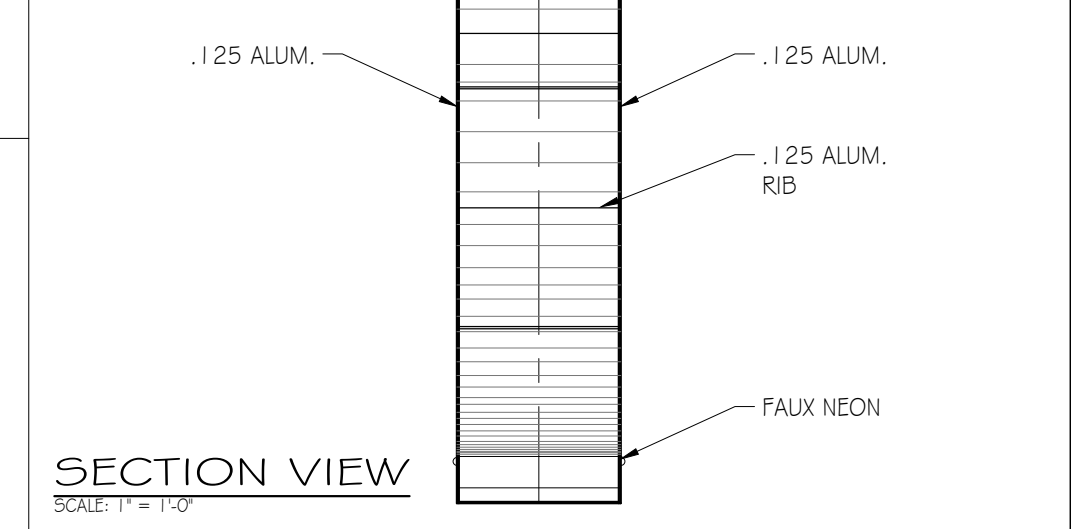
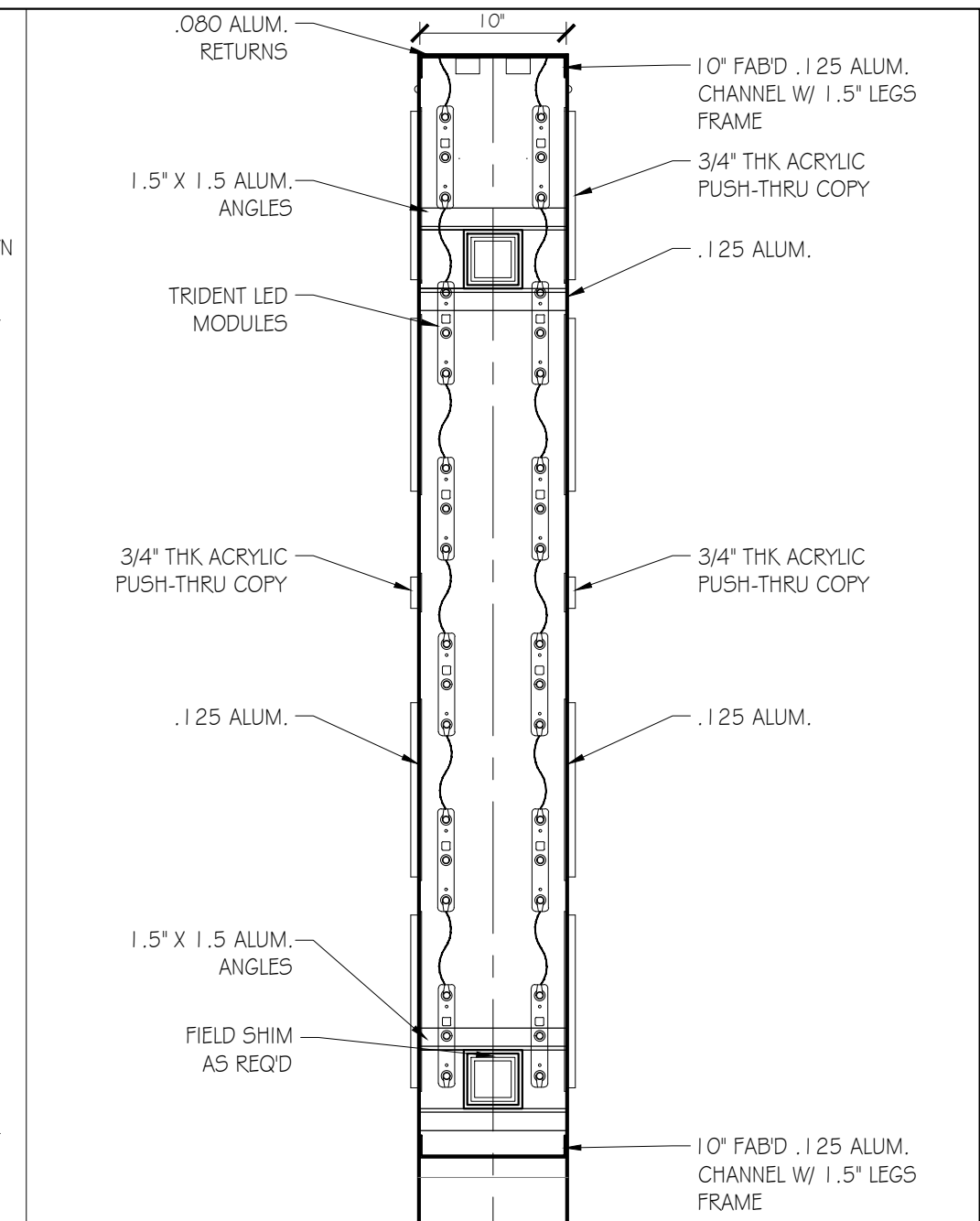
REVISIONS			
REV	DATE	DESCRIPTION	BY
2	11.08.22	ROTATED COPY TO REDUCE PROJECTION	MPG
3	11.09.22	FOR PERMITTING MOVED SIGN# 4 TO UNDER CANOPY	MPG

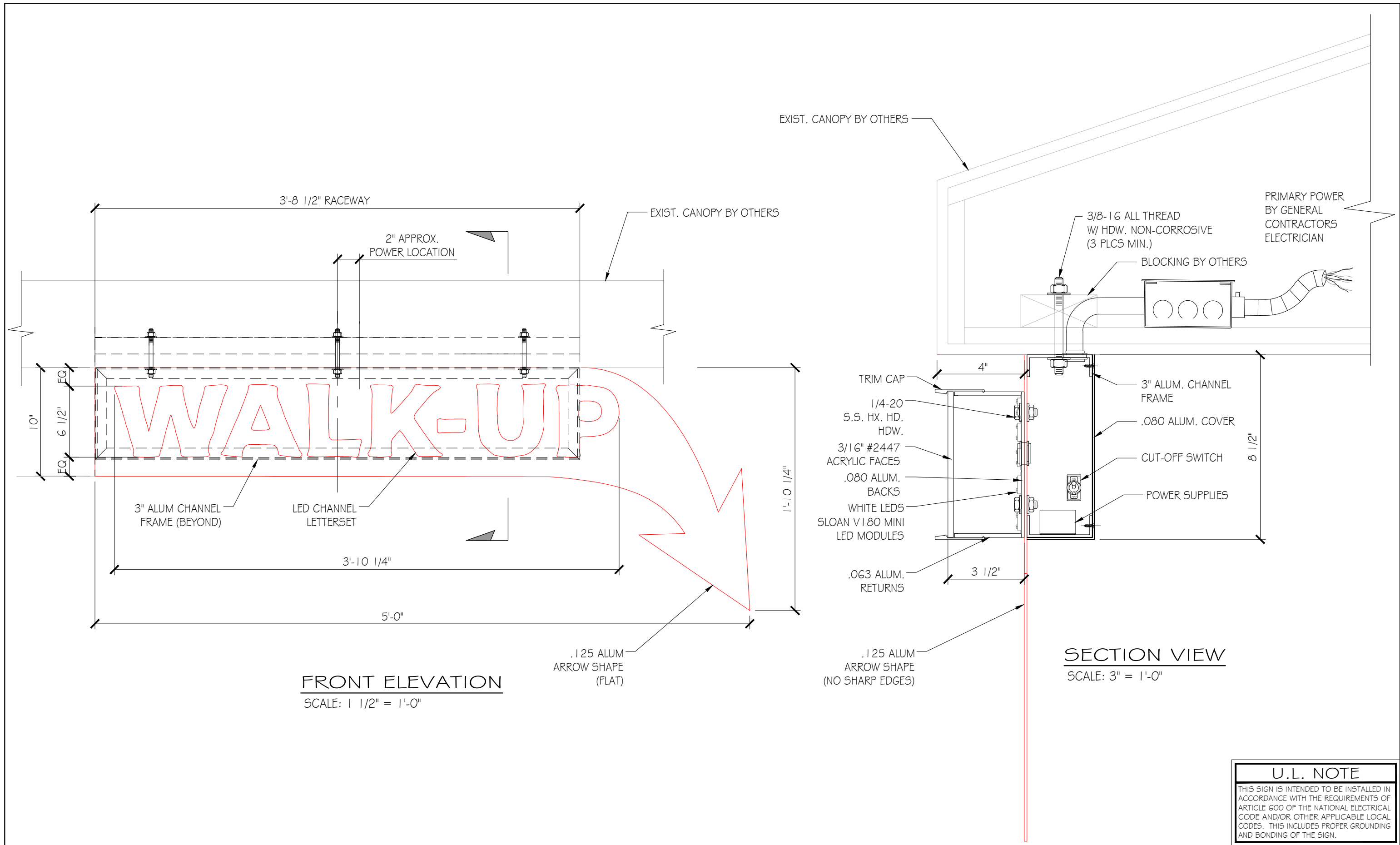


NOTE;
ARTWORK SHOWN ON THIS DRAWING IS SHOWN FOR REPRESENTATION ONLY. ACTUAL ARTWORK TO BE PROVIDED PRIOR TO FABRICATION

REVISIONS			
REV	DATE	DESCRIPTION	BY
-	-	-	-







U.L. NOTE

THIS SIGN IS INTENDED TO BE INSTALLED IN ACCORDANCE WITH THE REQUIREMENTS OF ARTICLE 600 OF THE NATIONAL ELECTRICAL CODE AND/OR OTHER APPLICABLE LOCAL CODES. THIS INCLUDES PROPER GROUNDING AND BONDING OF THE SIGN.

REVISIONS			
REV	DATE	DESCRIPTION	BY
1	11.09.22	MOVED SIGN TO UNDER CANOPY	MPG



VINYL GRAPHIC ELEV.
SCALE: 1" = 1'-0"

NOTE; LOGO SHOWN IS FOR REPRESENTATION ONLY. CUSTOMER TO SUPPLY CAMERA READY ARTWORK PRIOR TO FABRICATION.

DRAWINGS PREPARED BY



image one

677 Dunksferry Road
Bensalem, PA 19020

(215) 826-0880 ☎ (215) 826-0514 📠 [www. i1ind.com](http://www.i1ind.com) 🐾

DESIGN AND CONSTRUCTION DOCUMENTS AS INSTRUMENTS OF SERVICE ARE GIVEN IN CONFIDENCE AND REMAIN THE PROPERTY OF IMAGE ONE IND. THE USE OF THIS DESIGN AND CONSTRUCTION DOCUMENTS FOR PURPOSES OTHER THAN THE SPECIFIC PROJECT NAMED HERE IN IS STRICTLY PROHIBITED WITHOUT THE EXPRESS WRITTEN CONSENT OF IMAGE ONE INDUSTRIES.

REVISIONS

REV	DATE	DESCRIPTION	BY
-	-	-	-

DRAWINGS PREPARED FOR:



DRAWN BY

MPG

DATE

09.16.22

LOCATION

135 W ELLISON ST.,
BURLESON, TX 76028

JOB #

70-887

SCALE

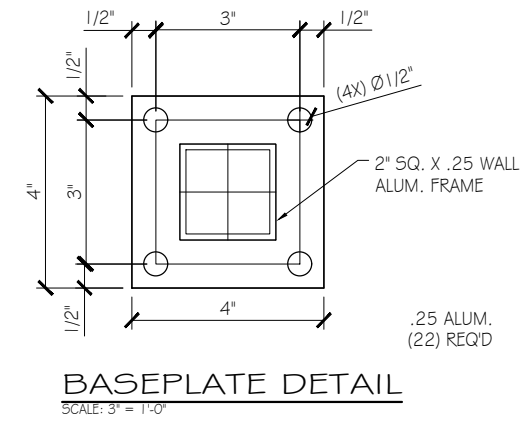
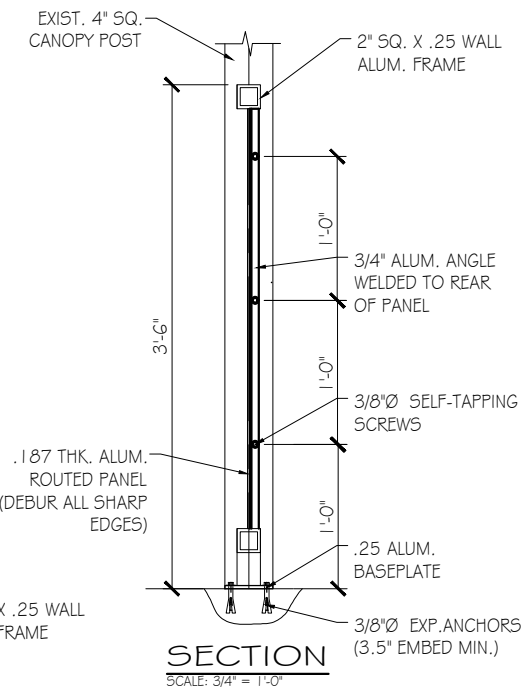
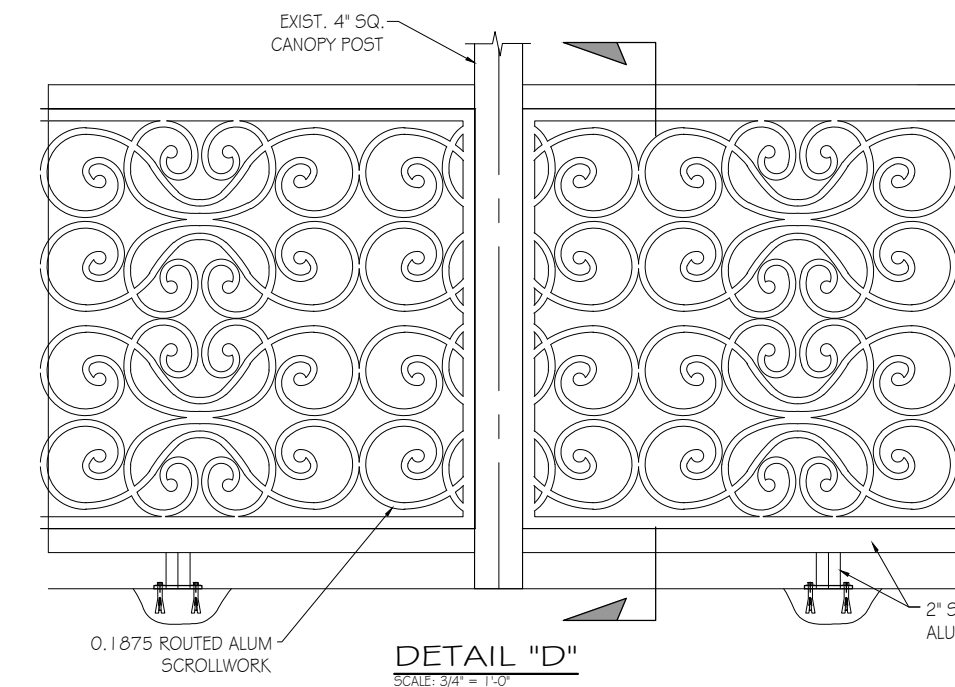
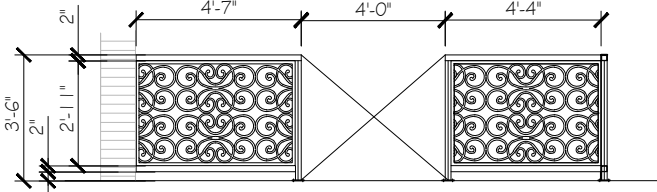
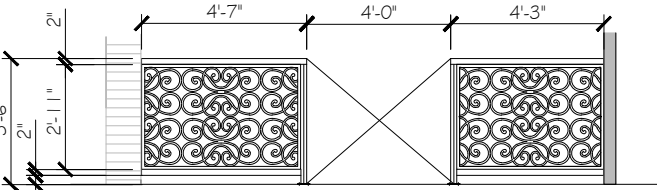
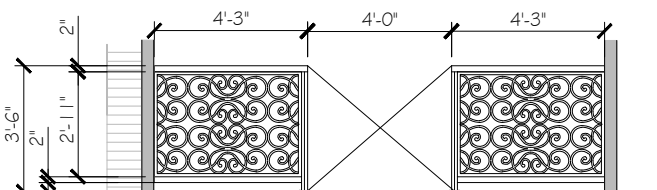
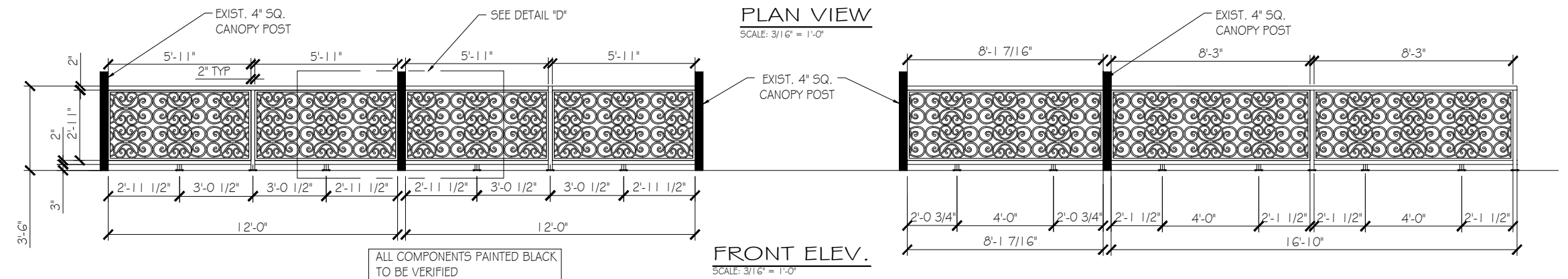
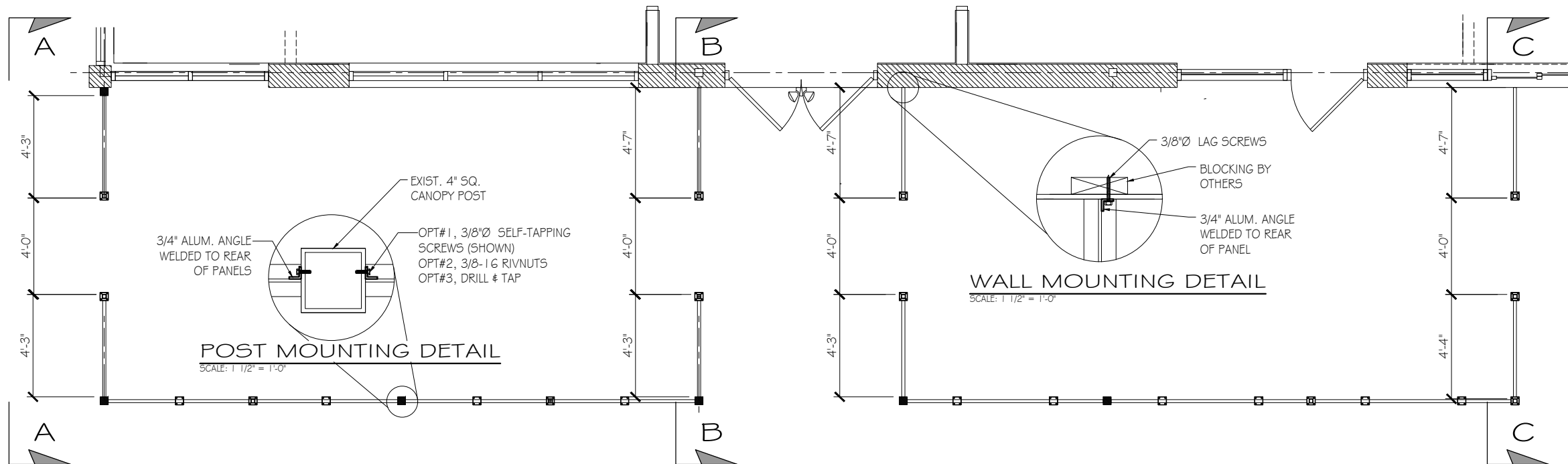
AS NOTED

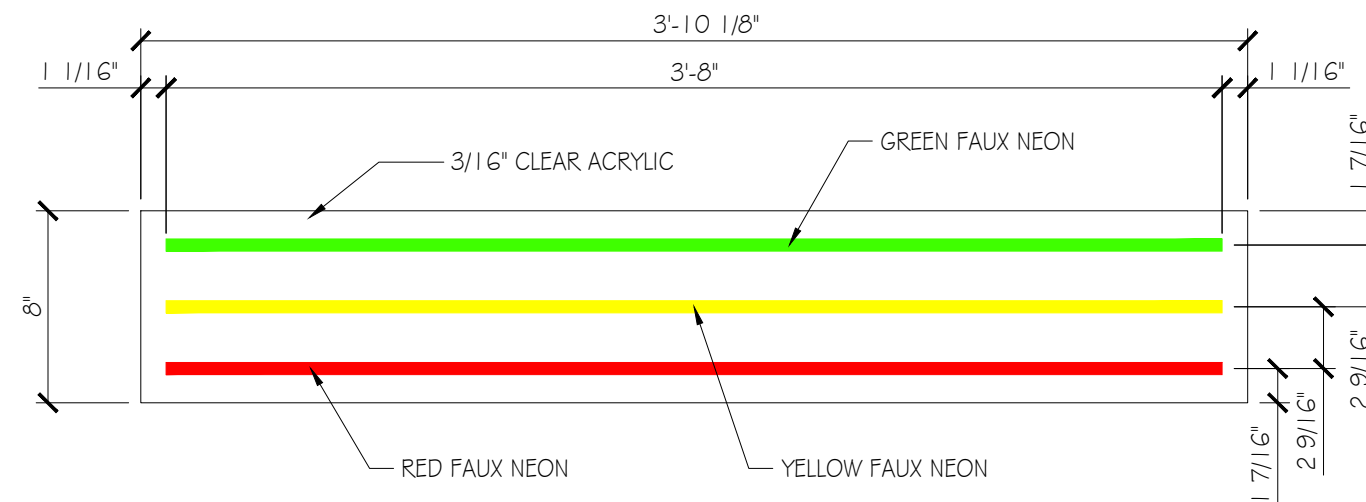
DRAWING TITLE

"HIMSELF"
SIGNAGE
DETAIL

DRAWING NUMBER

70887-EXT-5.0

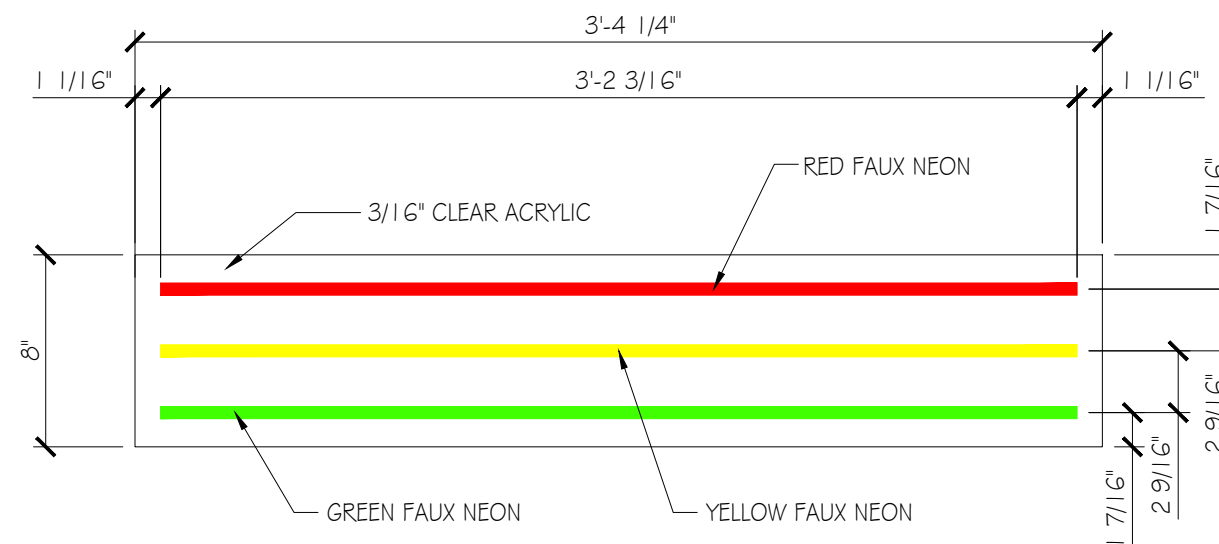




NOTE:
SIGN IS SYMMETRICAL -
SEE ACTUAL COLOR
LAYOUT ON RENDERING

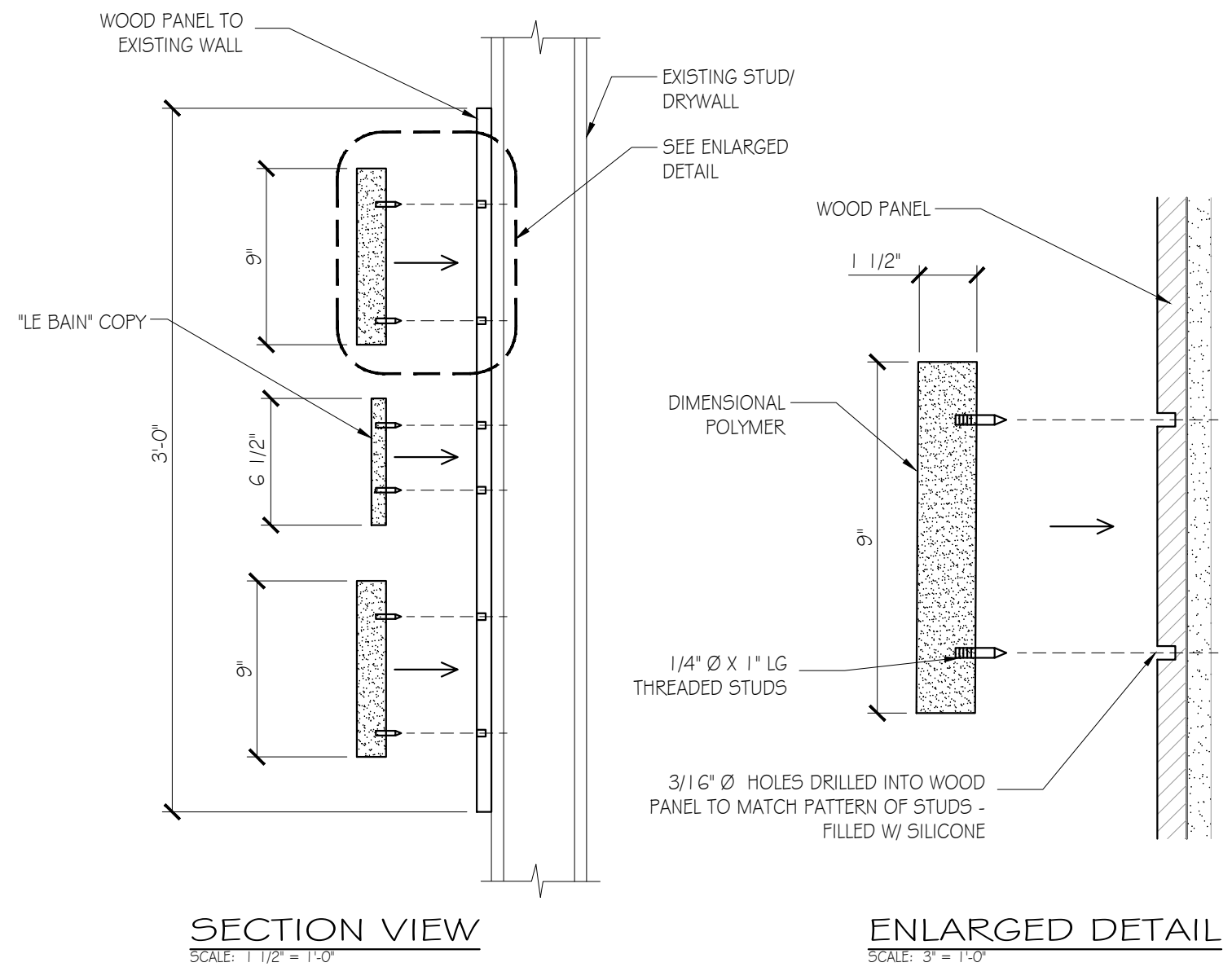
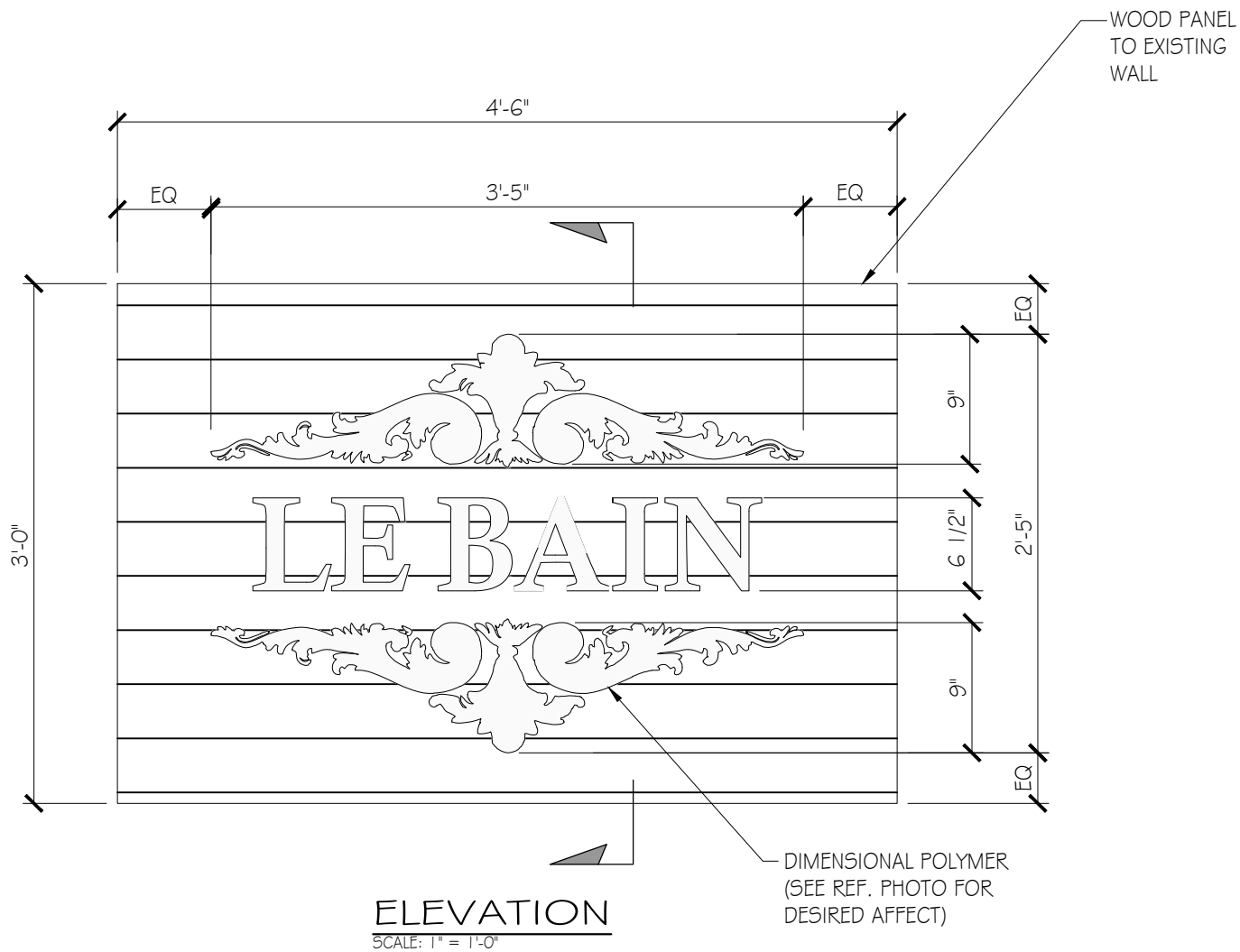
TOTAL ASSY REQ'D
(1)

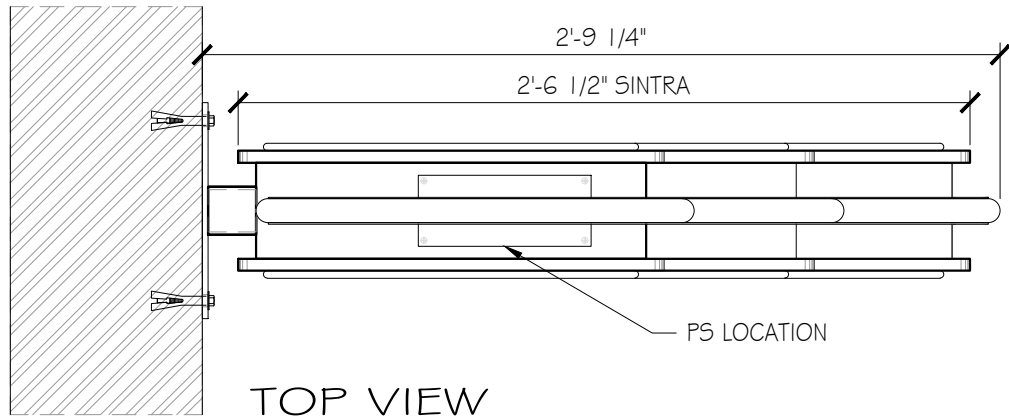
TYPE "1" (CANOPY FRONT)
FRONT ELEVATION - ASSEMBLY
SCALE: 1 1/2" = 1'-0"



TOTAL ASSY REQ'D
(8)

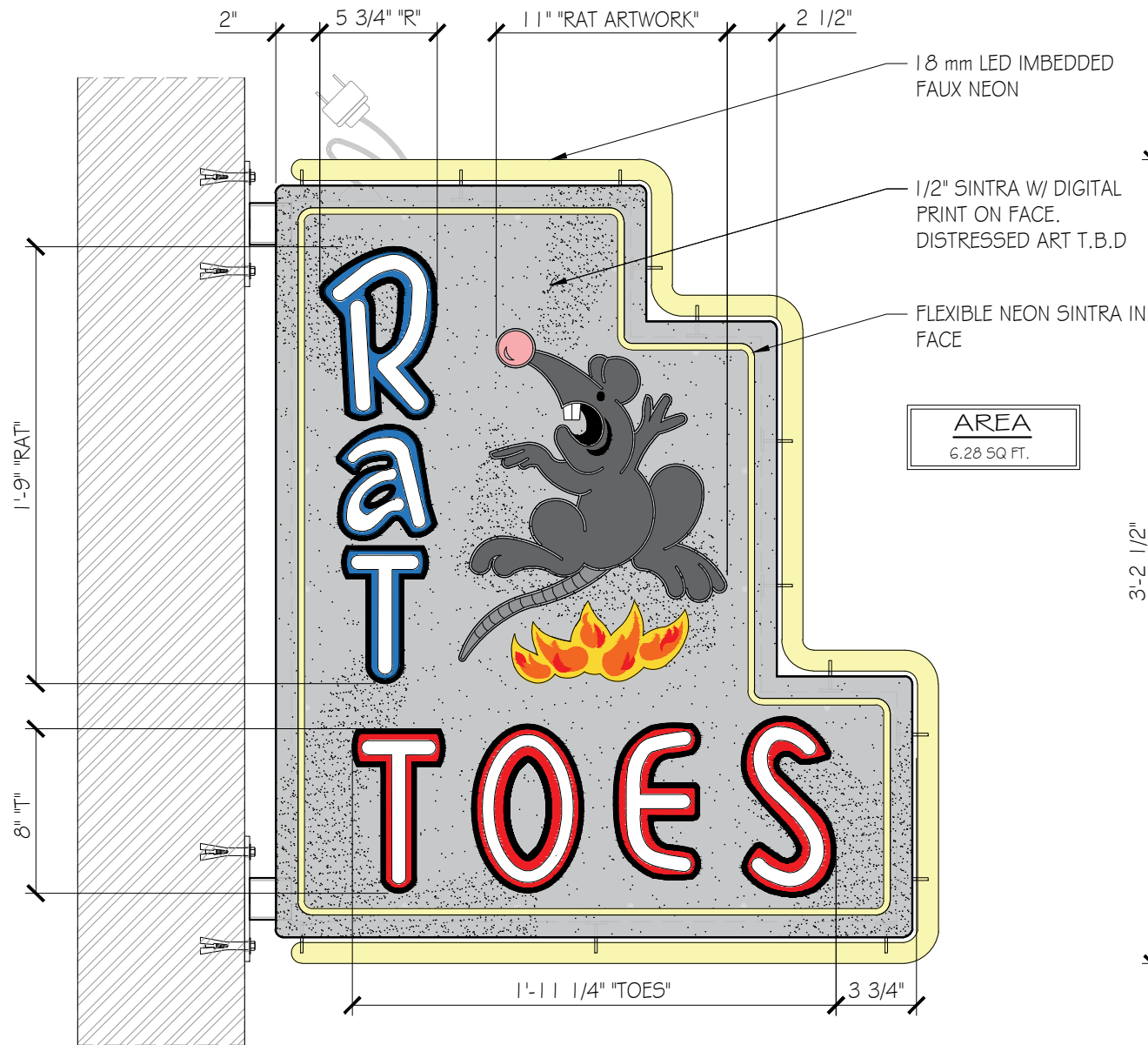
TYPE "2" (CANOPY SIDES)
FRONT ELEVATION - ASSEMBLY
SCALE: 1 1/2" = 1'-0"





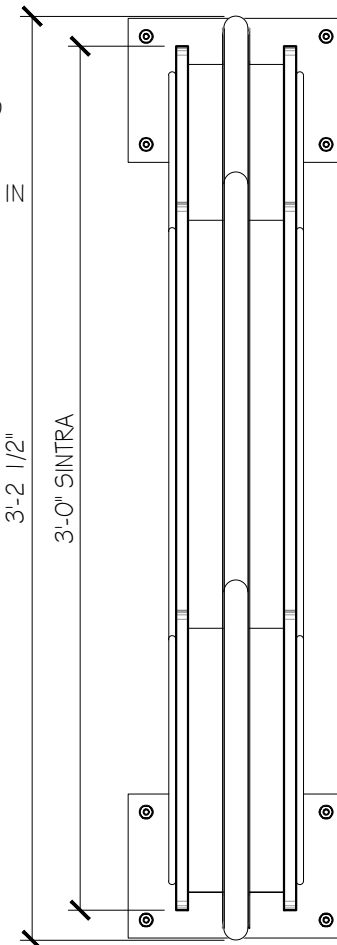
TOP VIEW

SCALE: 1 1/2" = 1'-0"



ELEVATION

SCALE: 1 1/2" = 1'-0"



SECTION VIEW

SCALE: 1 1/2" = 1'-0"

ARTWORK NOTE:

ARTWORK SHOWN ON THIS DRAWING IS SHOWN FOR REPRESENTATION ONLY. ACTUAL ARTWORK TO BE PROVIDED PRIOR TO FABRICATION

U.L. NOTE

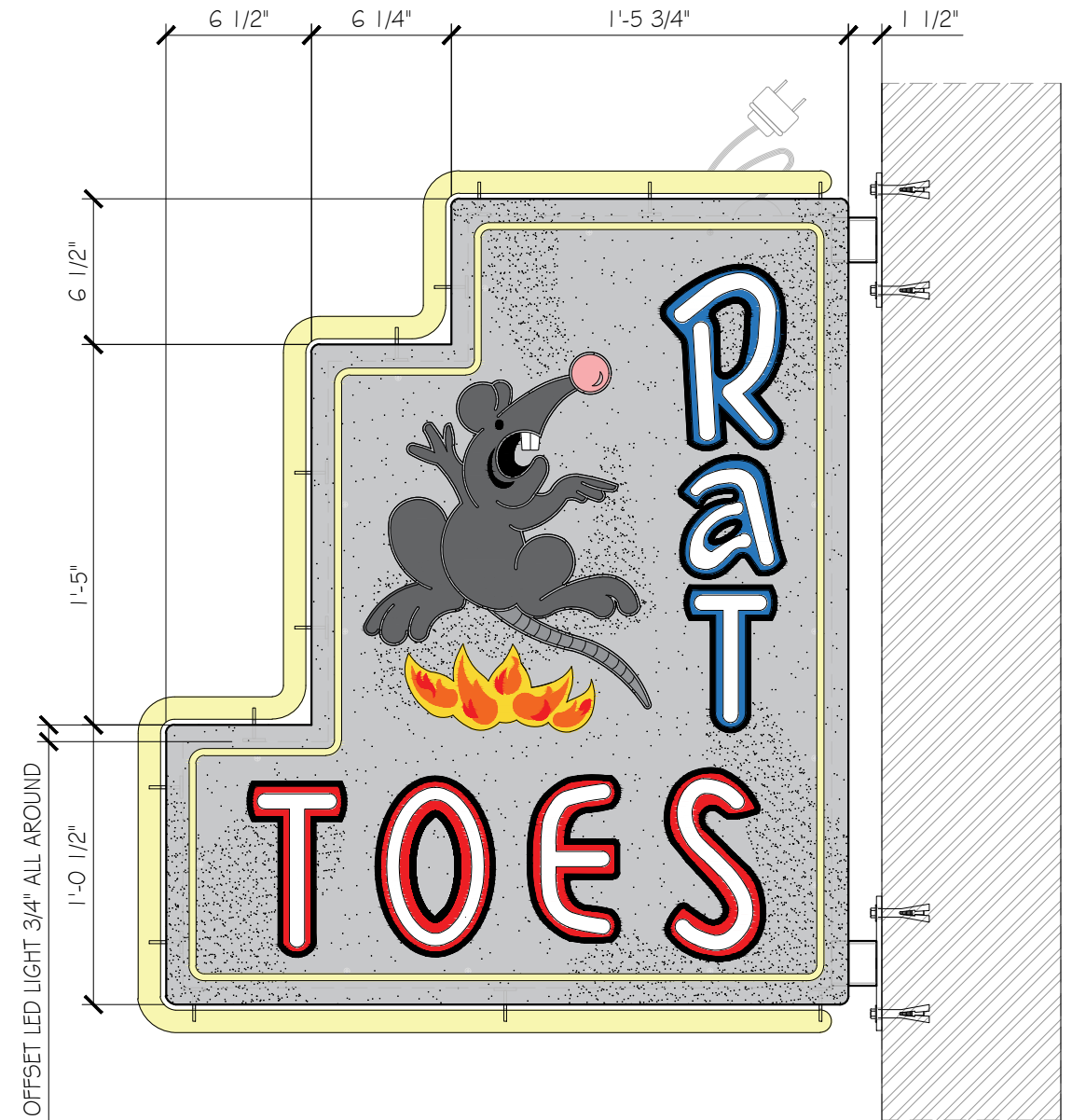
THIS SIGN IS INTENDED TO BE INSTALLED IN ACCORDANCE WITH THE REQUIREMENTS OF ARTICLE 600 OF THE NATIONAL ELECTRICAL CODE AND/OR OTHER APPLICABLE LOCAL CODES. THIS INCLUDES PROPER GROUNDING AND BONDING OF THE SIGN.

ELECTRICAL LOAD

4 AMPS @ 120 VOLTS

ELECTRICAL REQMTS

(1) 20 AMP CIRCUIT



ELEVATION REVERSE

SCALE: 1 1/2" = 1'-0"

DRAWINGS PREPARED BY



677 Dunksferry Road
Bensalem, PA 19020

(215) 826-0880 (215) 826-0514 www.i1ind.com

DESIGN AND CONSTRUCTION DOCUMENTS AS INSTRUMENTS OF SERVICE ARE GIVEN IN CONFIDENCE AND REMAIN THE PROPERTY OF IMAGE ONE IND. THE USE OF THIS DESIGN AND CONSTRUCTION DOCUMENTS FOR PURPOSES OTHER THAN THE SPECIFIC PROJECT NAMED HERE IN IS STRICTLY PROHIBITED WITHOUT THE EXPRESS WRITTEN CONSENT OF IMAGE ONE INDUSTRIES.

REVISIONS

REV	DATE	DESCRIPTION	BY
-	-	-	-

DRAWINGS PREPARED FOR:



DRAWN BY

MPG

DATE

09.13.22

LOCATION

135 W ELLISON ST.,
BURLESON, TX 76028

JOB #

70-887

SCALE

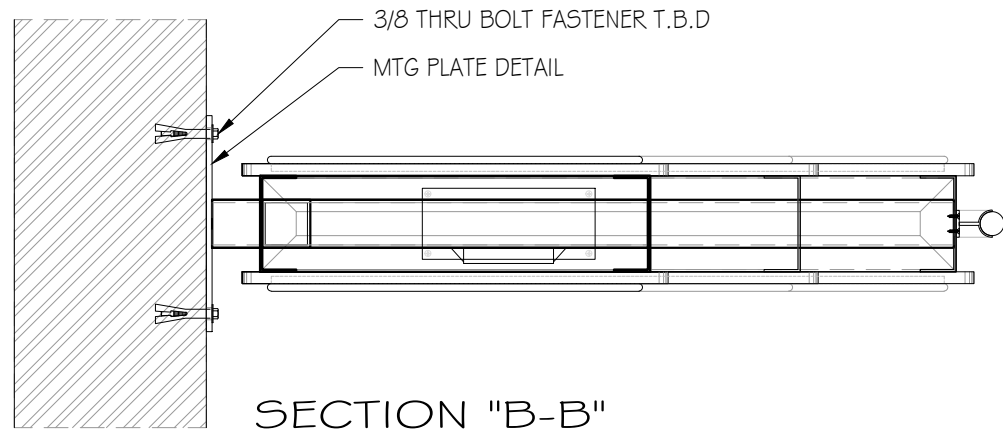
AS NOTED

DRAWING TITLE

"RAT TOES"
SIGNAGE
DETAILS

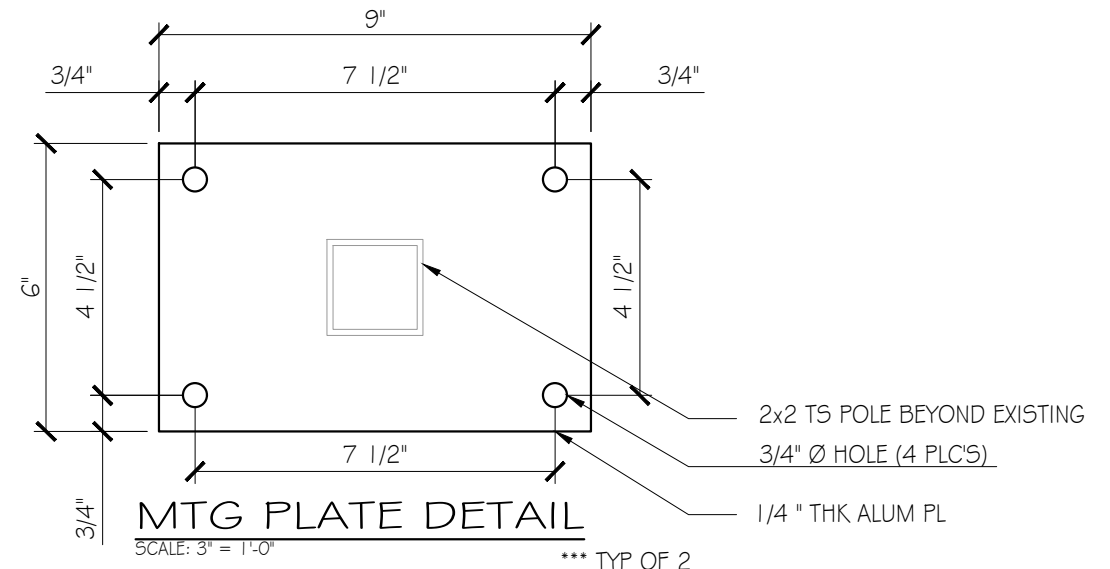
DRAWING NUMBER

70887-INT-11.0



SECTION "B-B"

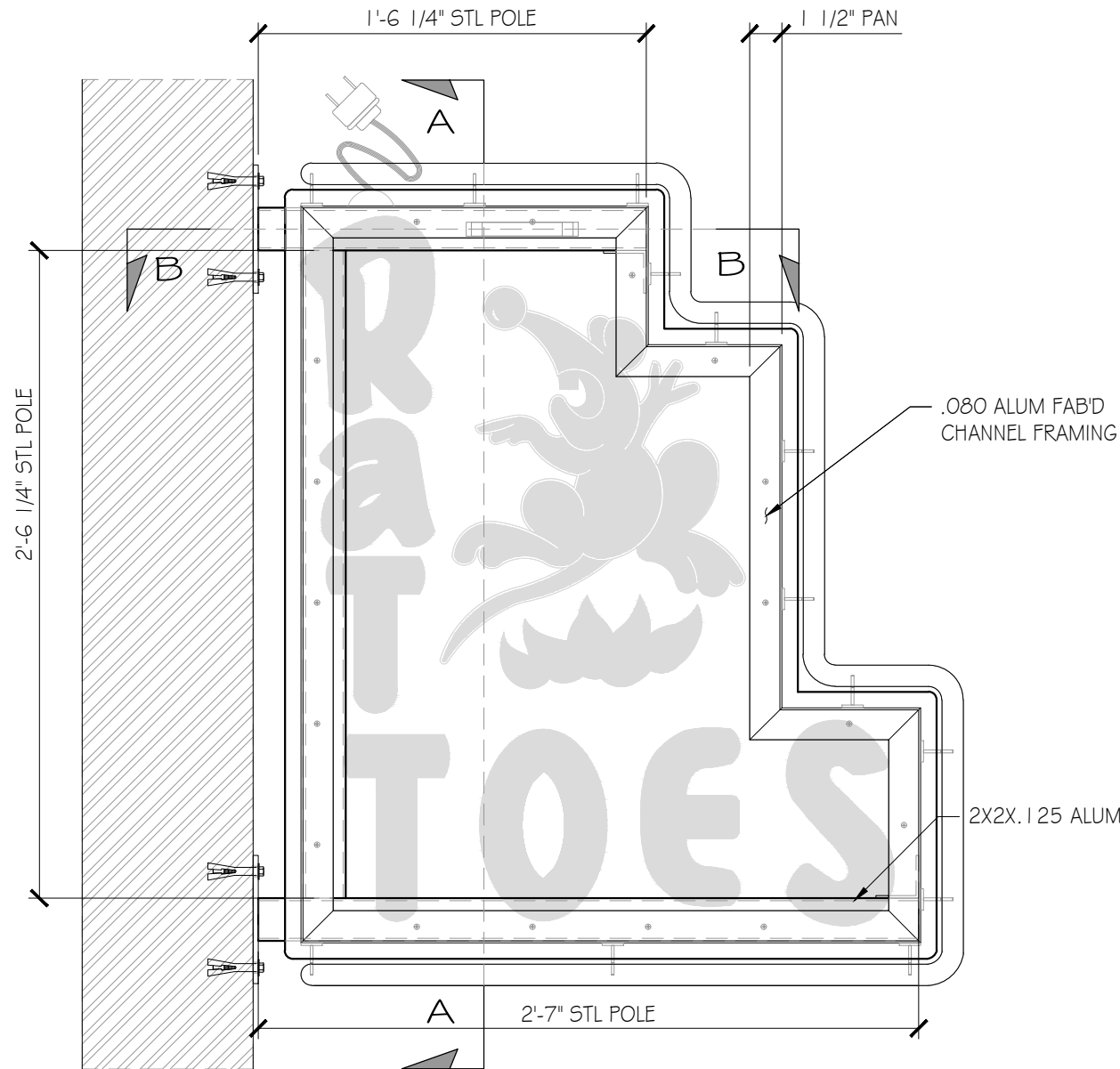
SCALE: 1 1/2" = 1'-0"



MTG PLATE DETAIL

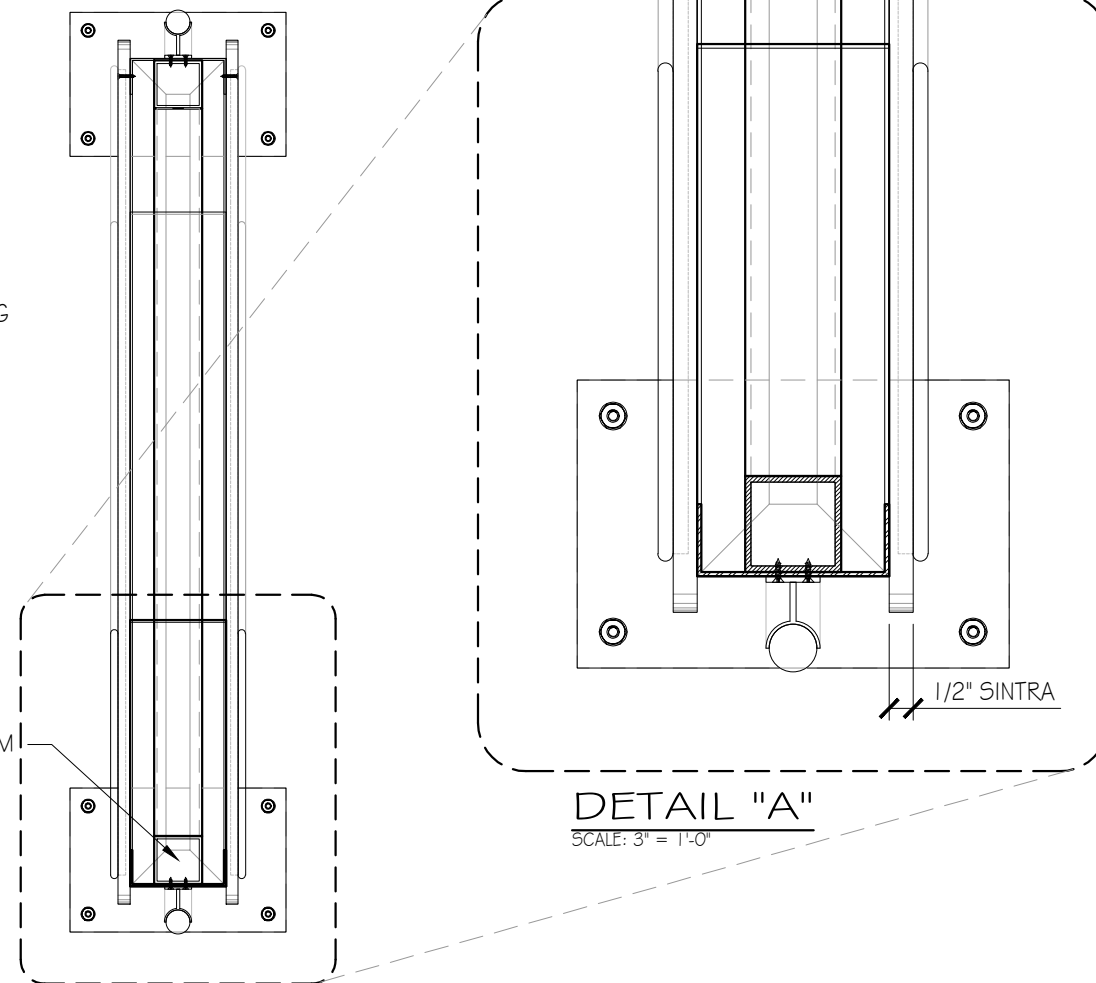
SCALE: 3" = 1'-0"

*** TYP OF 2



FRAMING ELEVATION

SCALE: 1 1/2" = 1'-0"

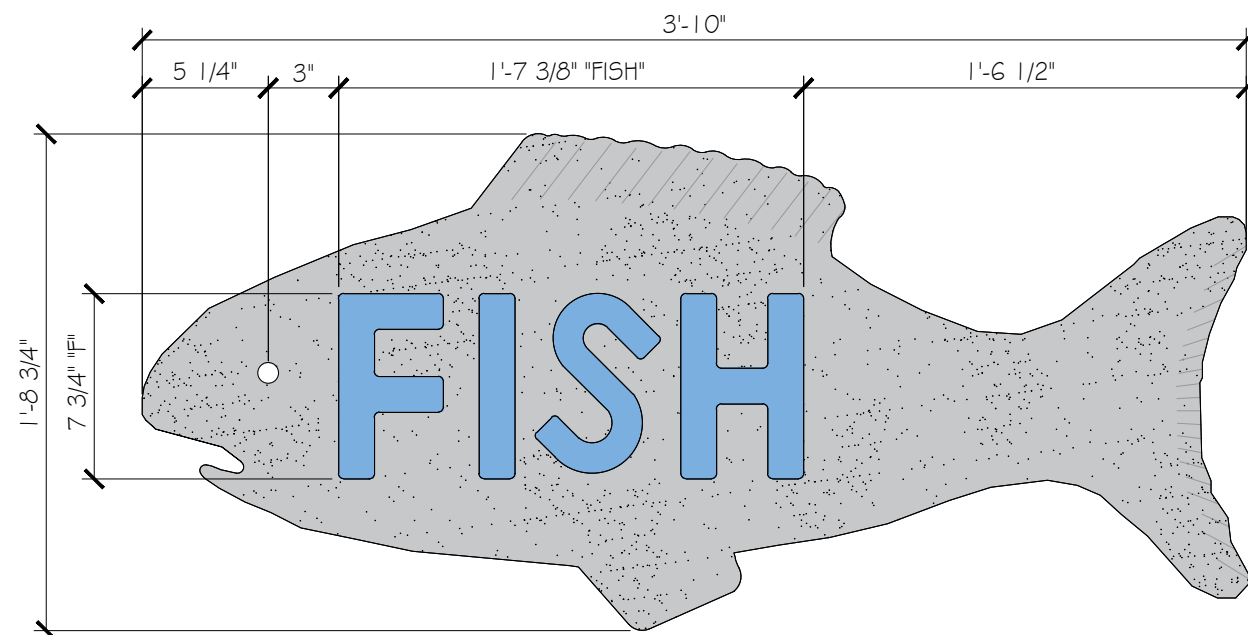


DETAIL "A"

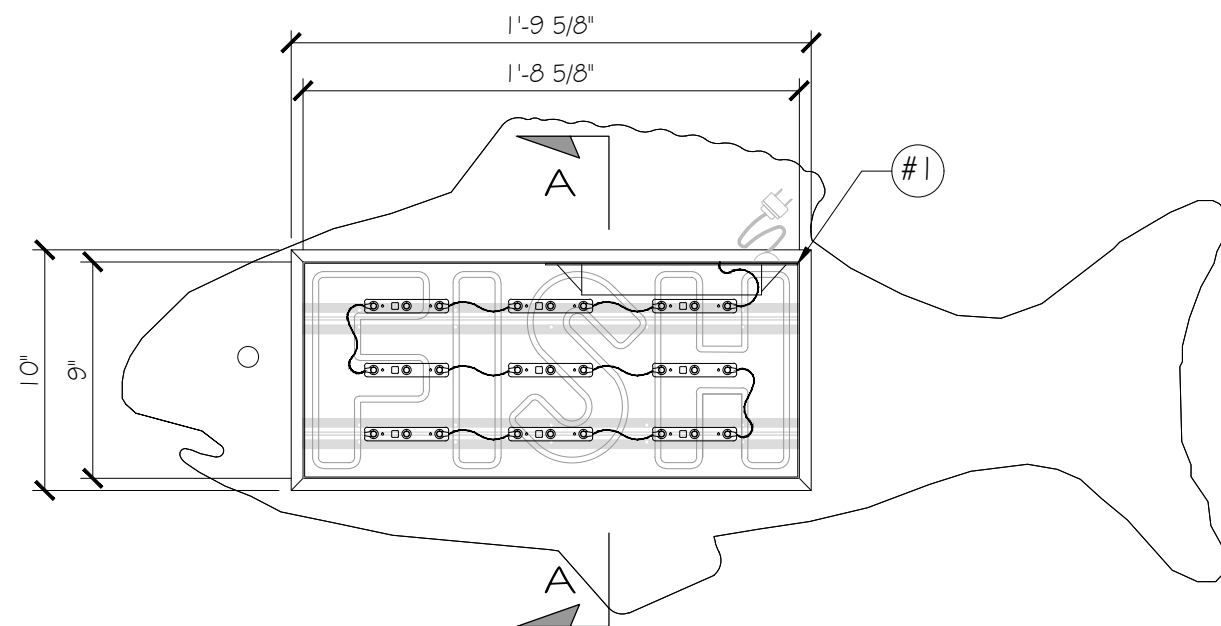
SCALE: 3" = 1'-0"

SECTION "A-A"

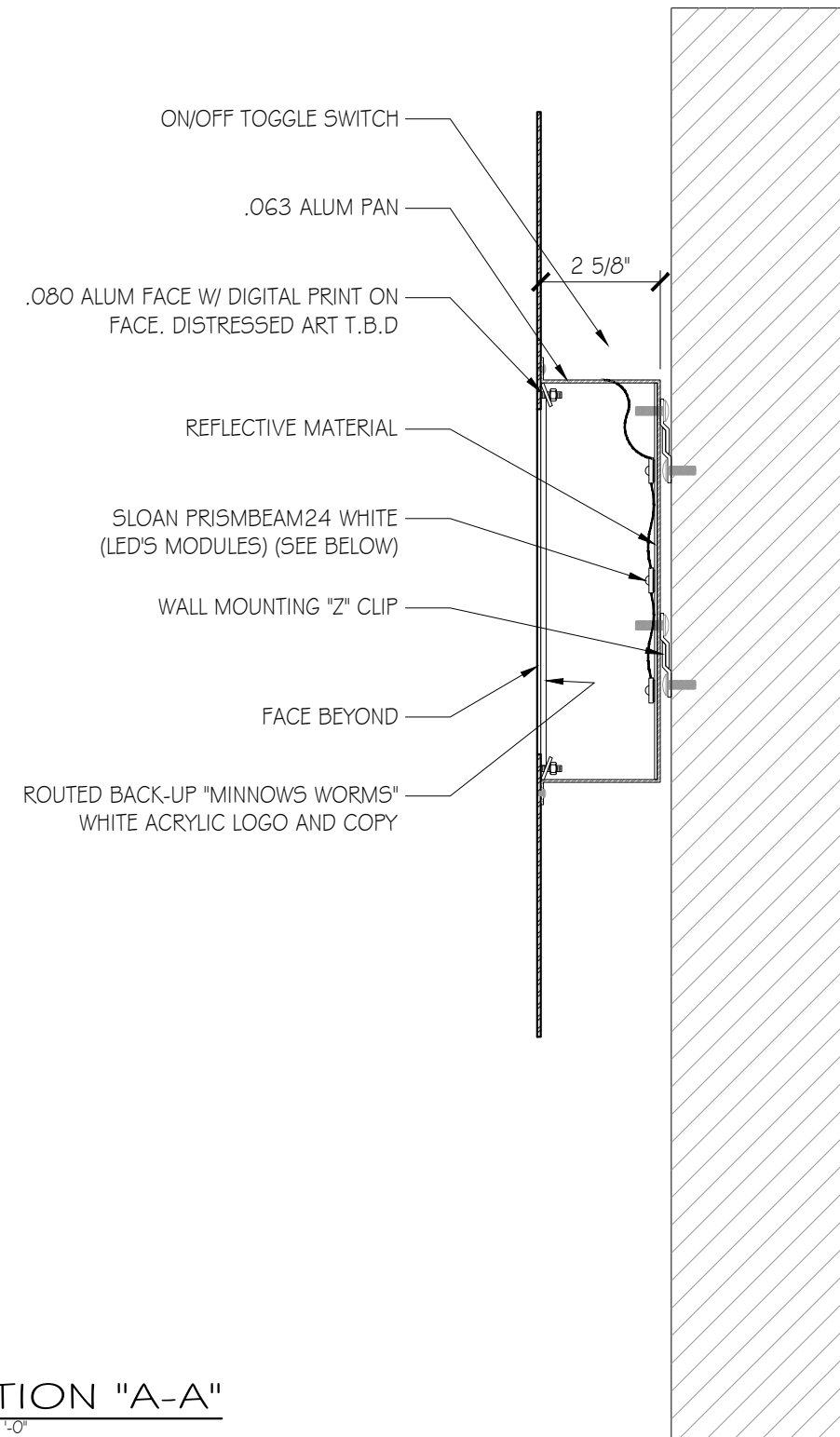
SCALE: 1 1/2" = 1'-0"



ELEVATION
SCALE: 1 1/2" = 1'-0"



FRAMING ELEVATION
SCALE: 1 1/2" = 1'-0"



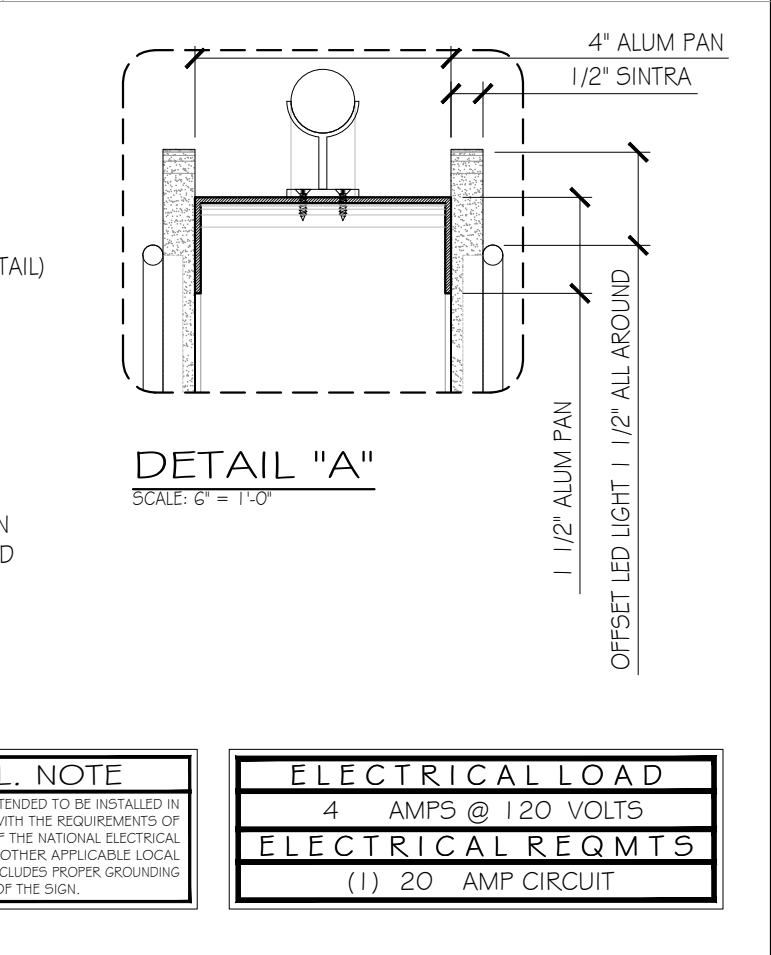
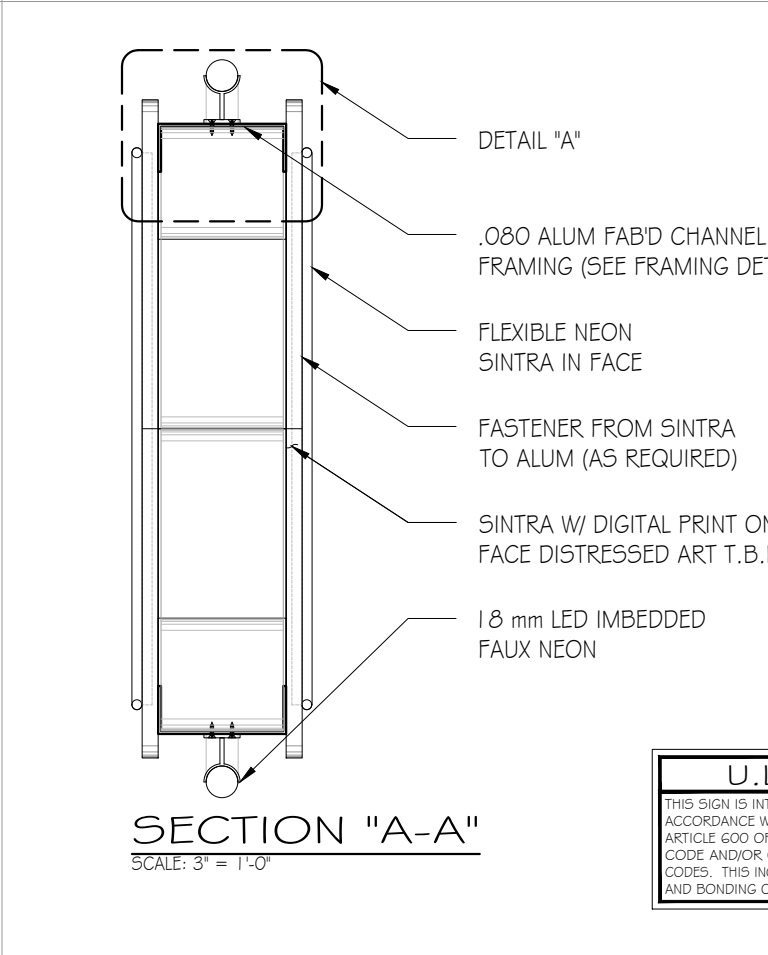
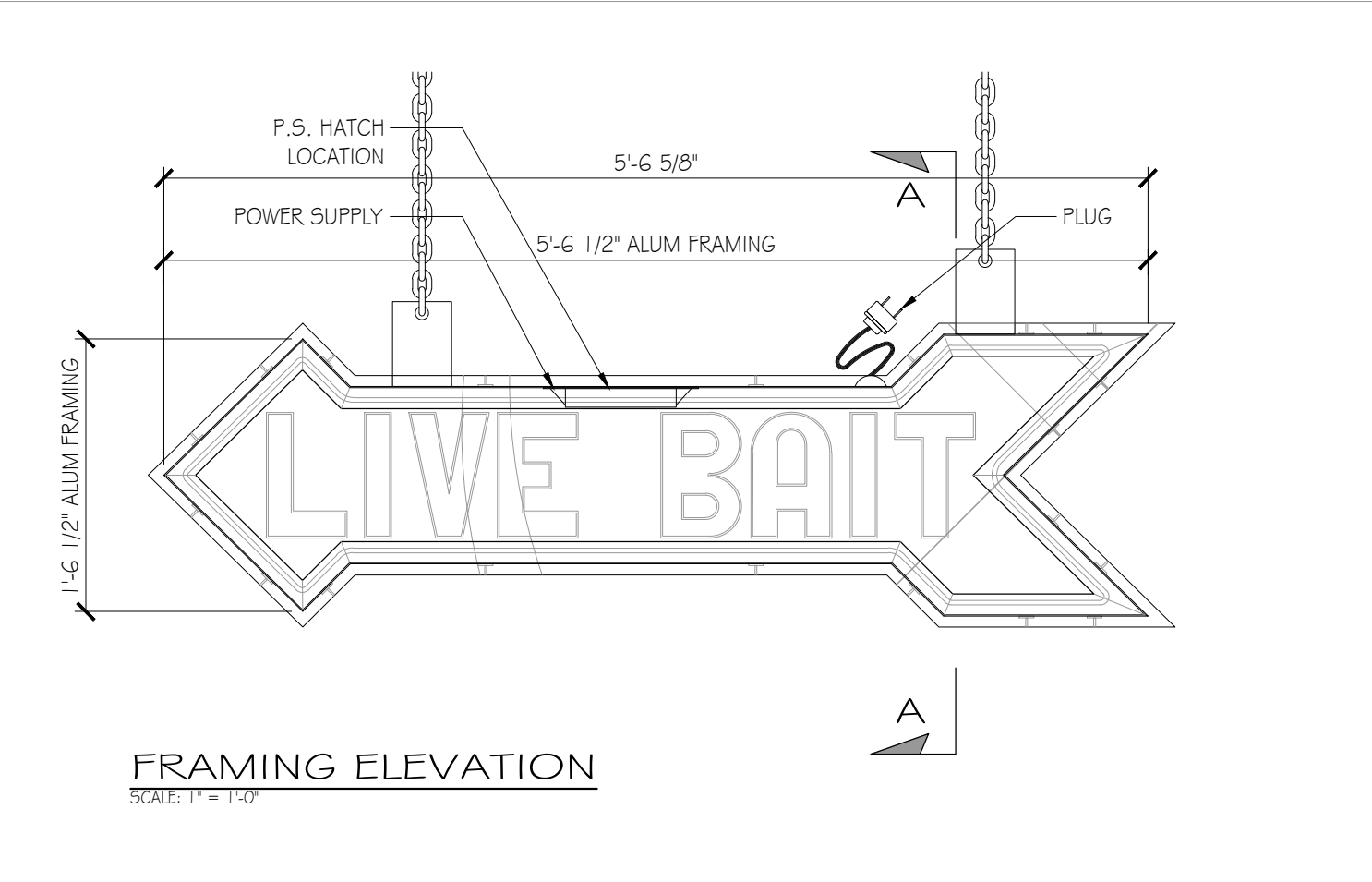
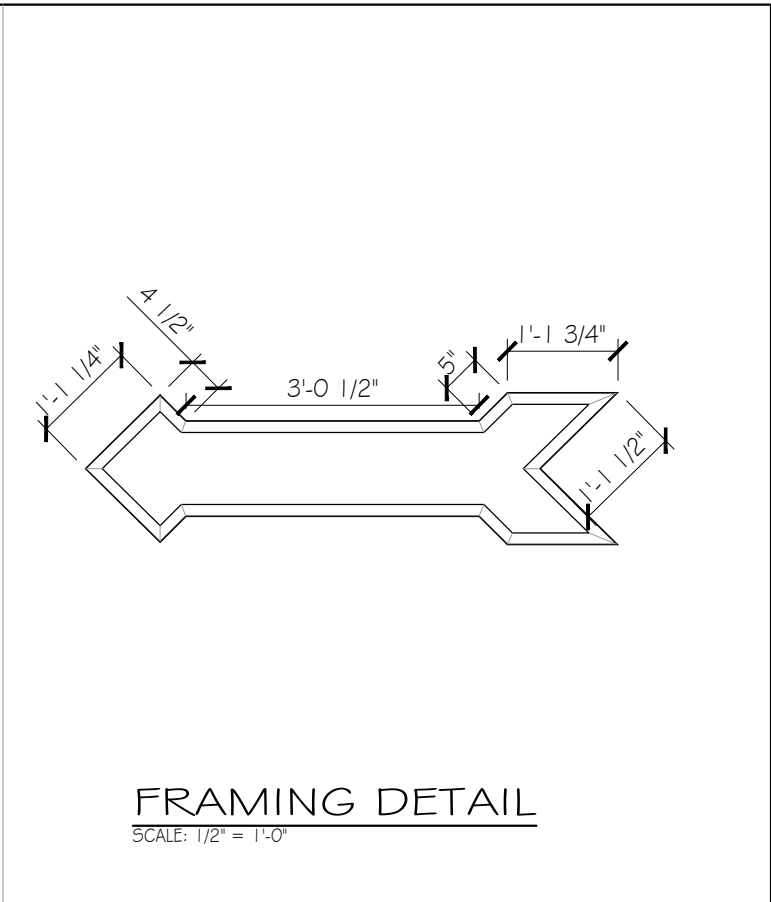
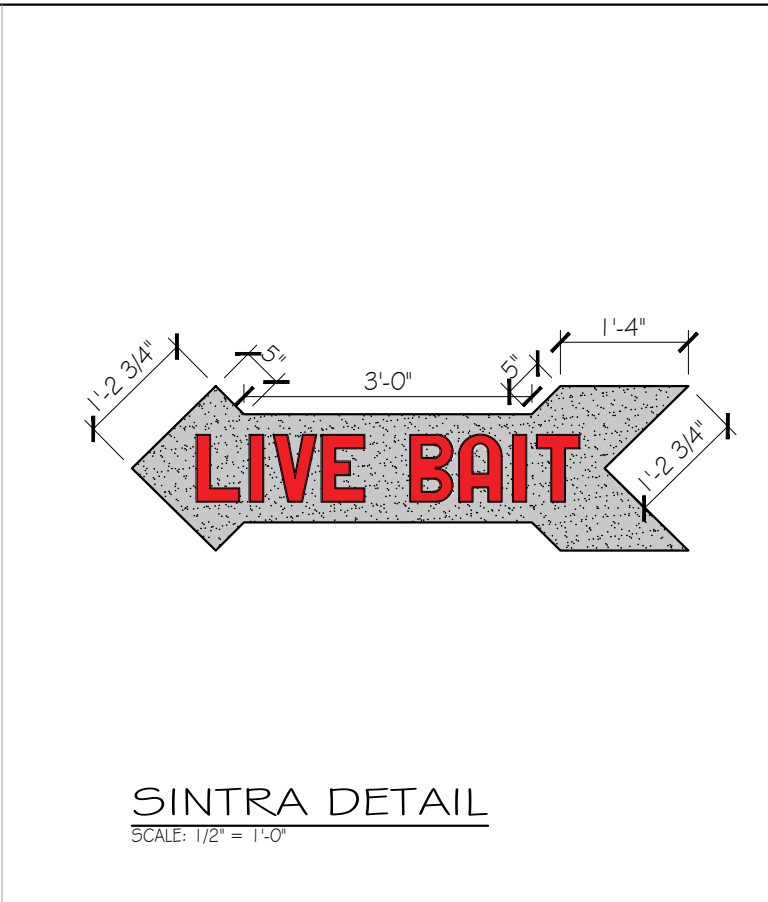
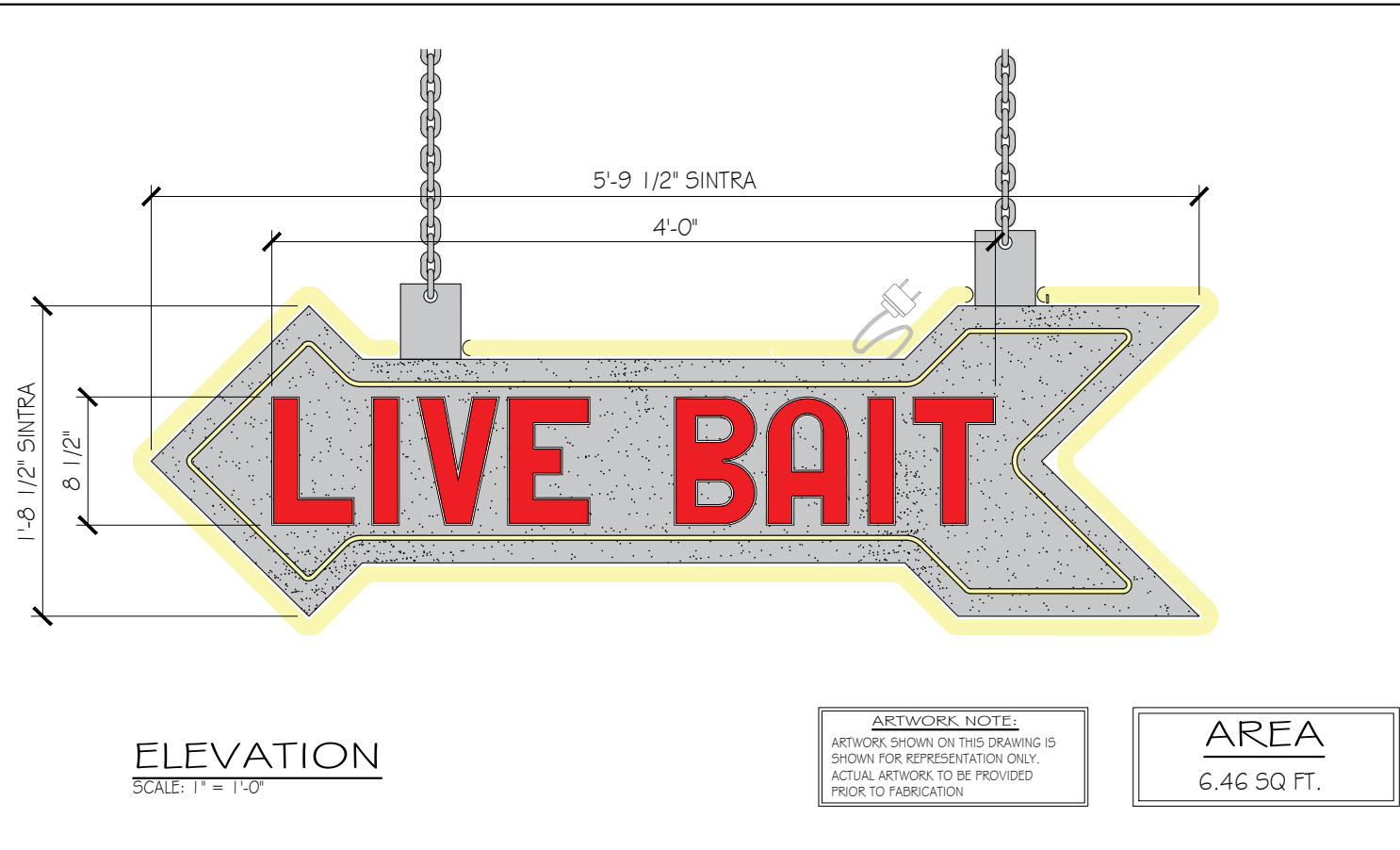
SECTION "A-A"
SCALE: 3" = 1'-0"

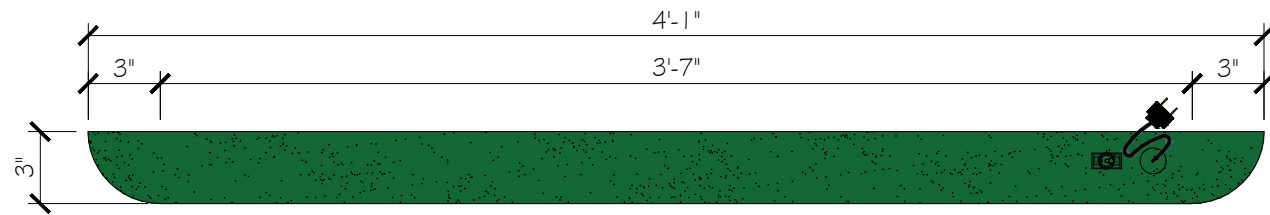
U.L. NOTE
THIS SIGN IS INTENDED TO BE INSTALLED IN ACCORDANCE WITH THE REQUIREMENTS OF ARTICLE 600 OF THE NATIONAL ELECTRICAL CODE AND/OR OTHER APPLICABLE LOCAL CODES. THIS INCLUDES PROPER GROUNDING AND BONDING OF THE SIGN.

ELECTRICAL LOAD
4 AMPS @ 120 VOLTS
ELECTRICAL REQMTS
(1) 20 AMP CIRCUIT

ARTWORK NOTE:
ARTWORK SHOWN ON THIS DRAWING IS SHOWN FOR REPRESENTATION ONLY. ACTUAL ARTWORK TO BE PROVIDED PRIOR TO FABRICATION

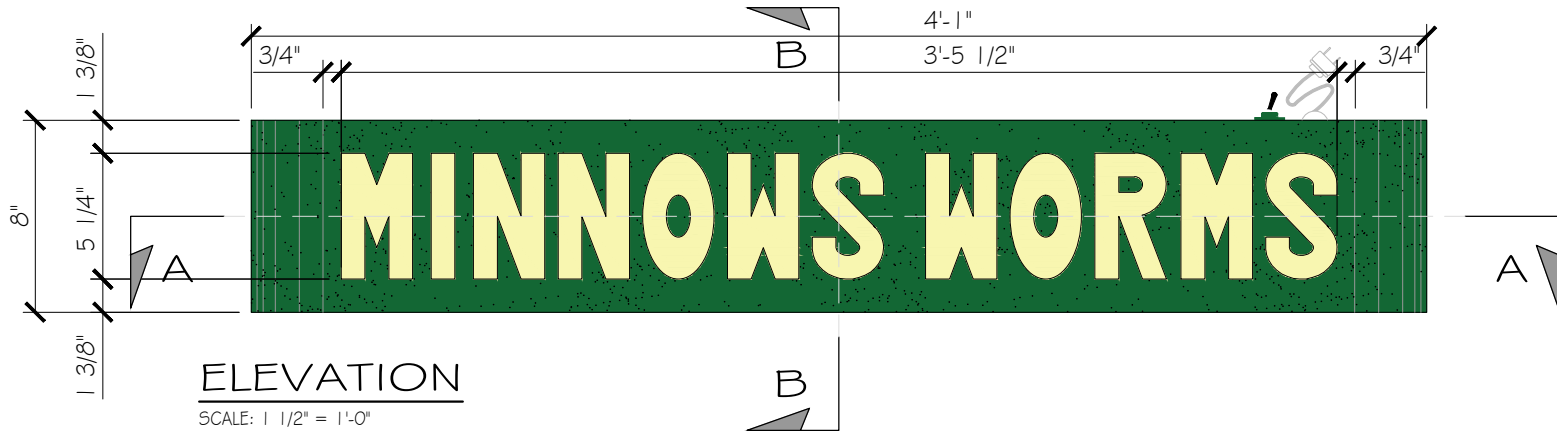
3	-LED MODULES (PER LENGTH)	SLOAN PRISMBEAM24 WHITE (LED'S MODULES)	
1	-100W POWER SUPPLY (.85 amps @ 120v per power supply)	(3 LED'S PER MODULE) (1.5 MODULES PER FT.)	1.12 WATTS PER MODULE 6500K PER MODULE



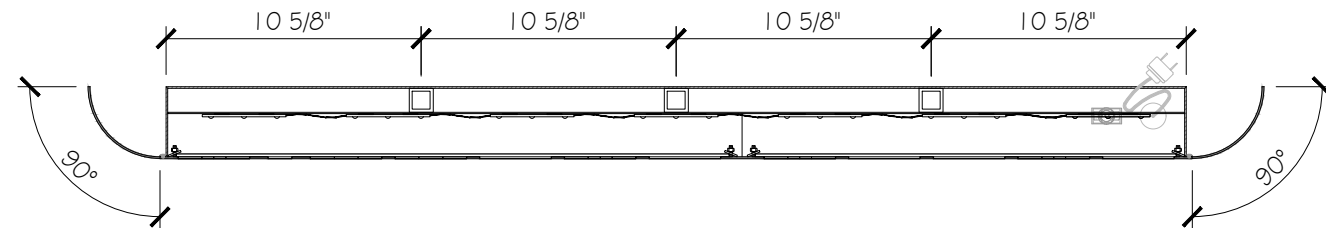


TOP VIEW
SCALE: 1 1/2" = 1'-0"

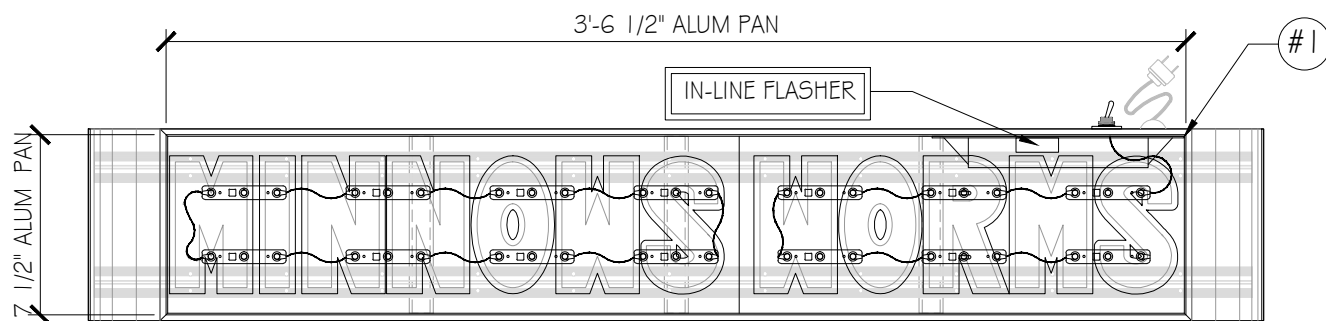
AREA
2.72 SQ. FT.



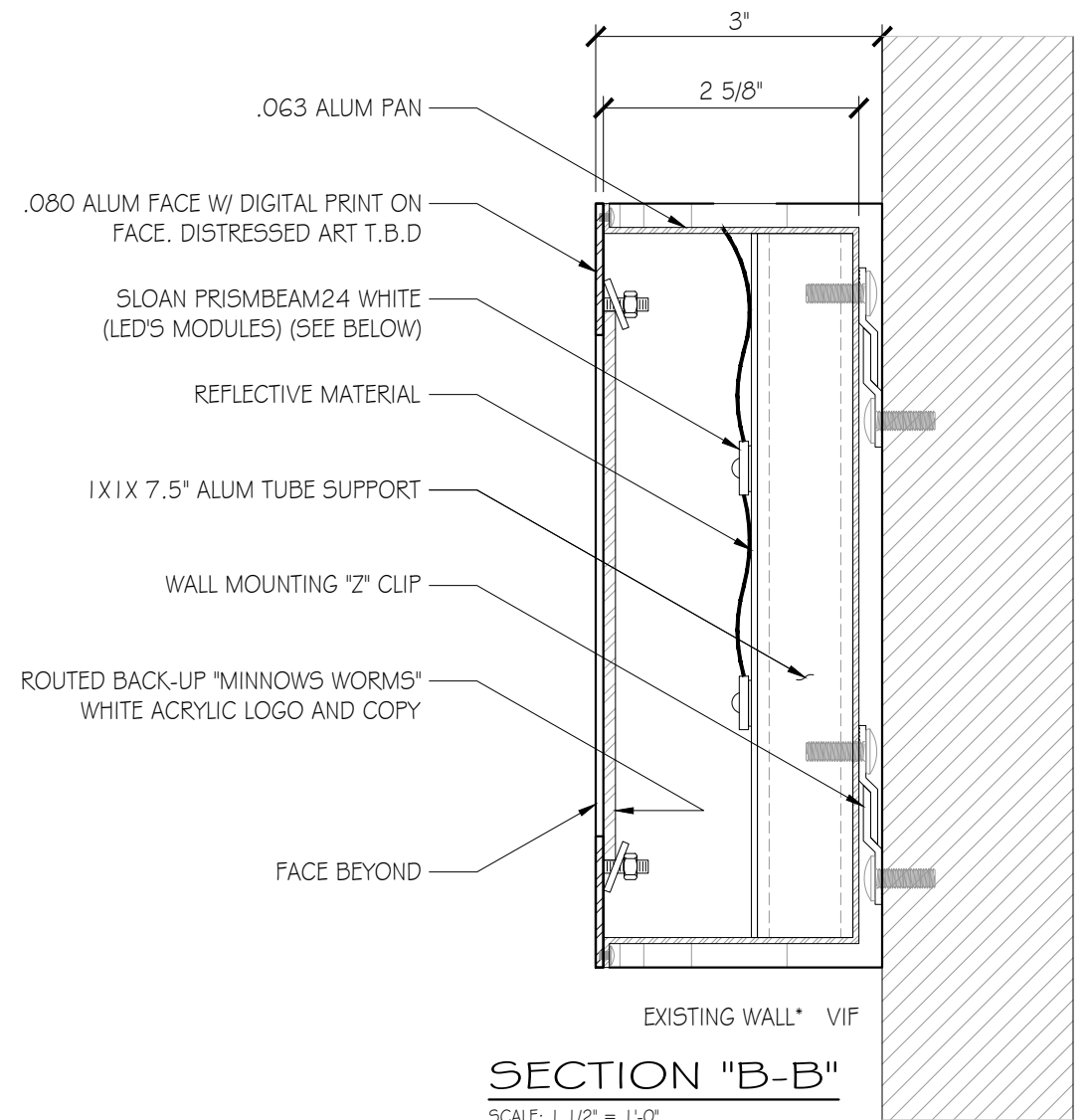
ELEVATION
SCALE: 1 1/2" = 1'-0"



SECTION "A-A"
SCALE: 1 1/2" = 1'-0"



FRAMING ELEVATION
SCALE: 1 1/2" = 1'-0"



SECTION "B-B"
SCALE: 1 1/2" = 1'-0"

U.L. NOTE

THIS SIGN IS INTENDED TO BE INSTALLED IN ACCORDANCE WITH THE REQUIREMENTS OF ARTICLE 600 OF THE NATIONAL ELECTRICAL CODE AND/OR OTHER APPLICABLE LOCAL CODES. THIS INCLUDES PROPER GROUNDING AND BONDING OF THE SIGN.

ELECTRICAL LOAD

4 AMP5 @ 120 VOLTS

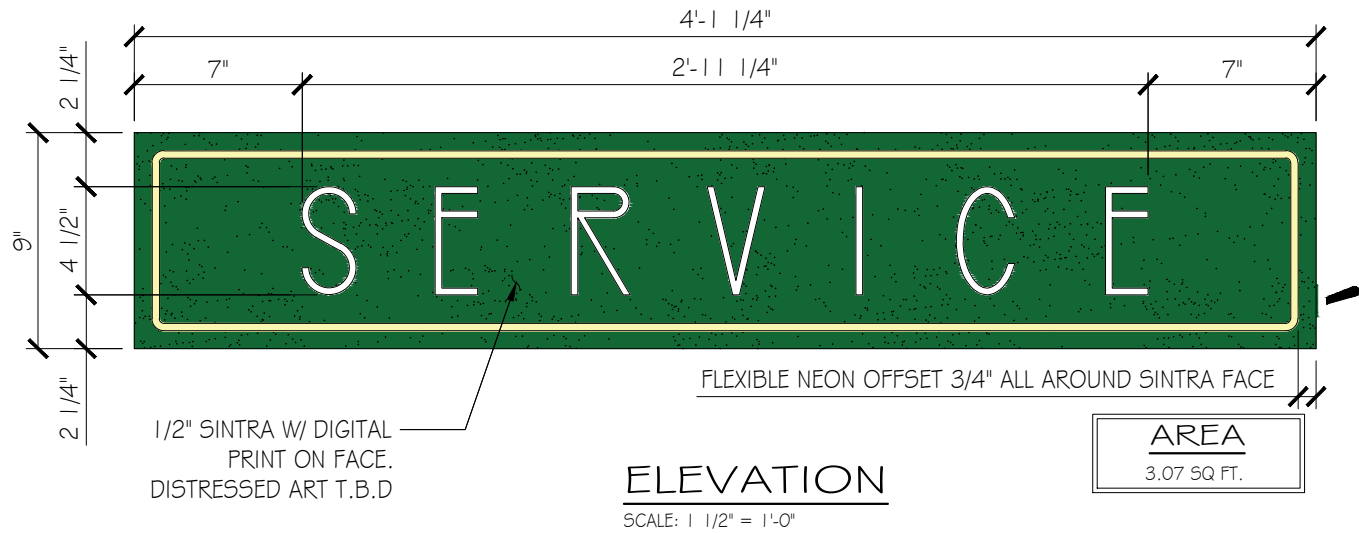
ELECTRICAL REQMTS

(1) 20 AMP CIRCUIT

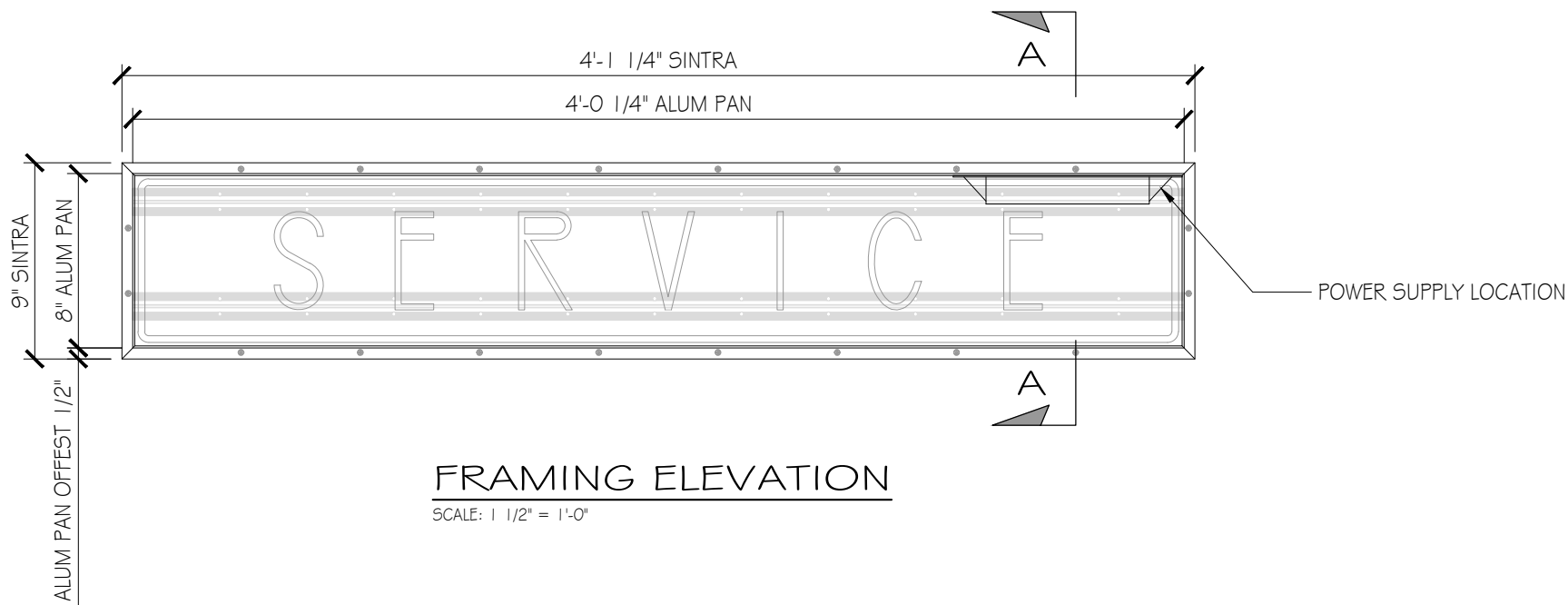
ARTWORK NOTE:

ARTWORK SHOWN ON THIS DRAWING IS SHOWN FOR REPRESENTATION ONLY. ACTUAL ARTWORK TO BE PROVIDED PRIOR TO FABRICATION

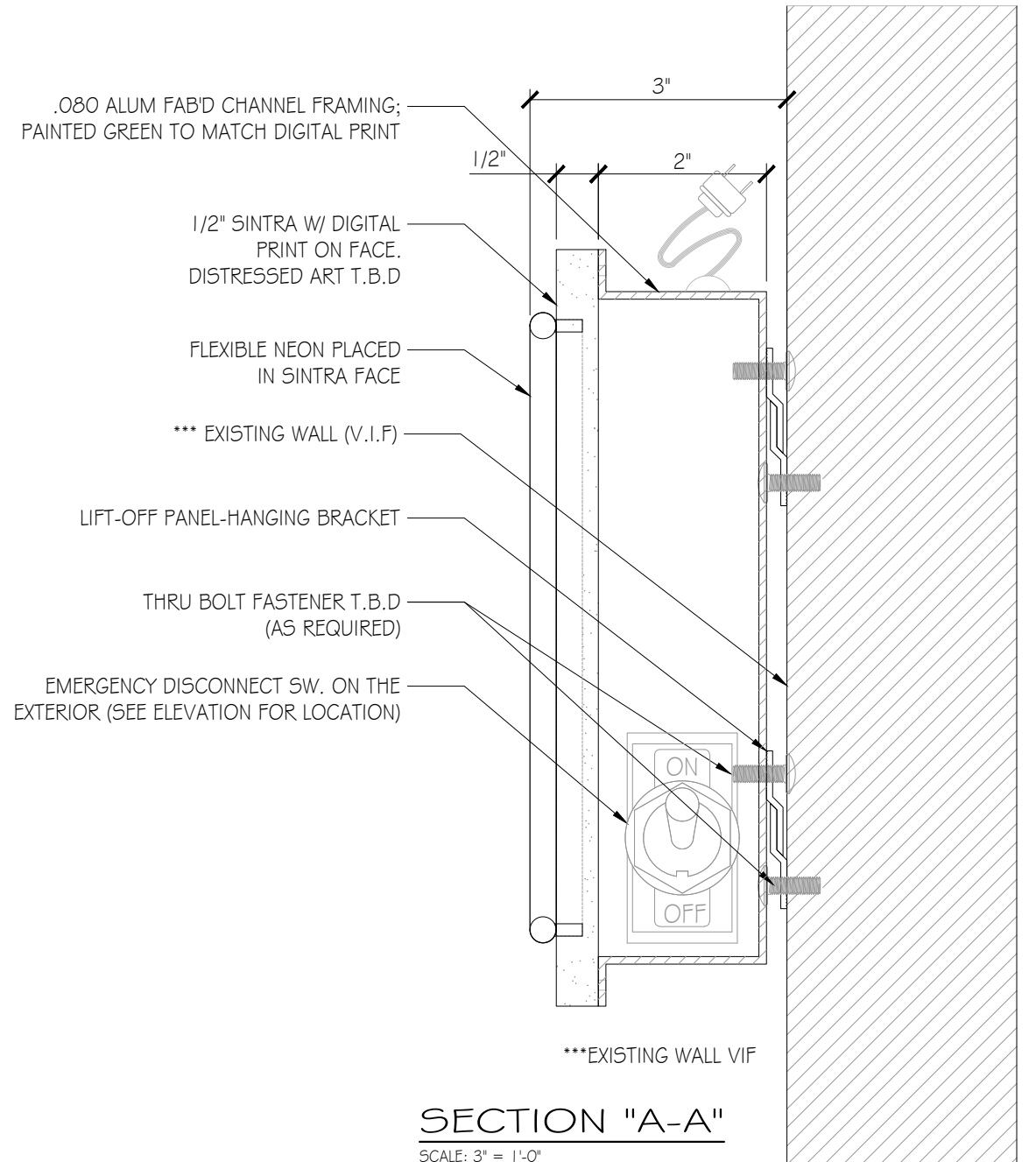
3	-LED MODULES (PER LENGTH)	SLOAN PRISMBEAM24 WHITE (LED'S MODULES)	
1	-100W POWER SUPPLY (.85 amps @ 120v per power supply)	(3 LED'S PER MODULE) (1.5 MODULES PER FT.)	1.12 WATTS PER MODULE 6500K PER MODULE



ELEVATION
SCALE: 1 1/2" = 1'-0"



FRAMING ELEVATION
SCALE: 1 1/2" = 1'-0"



SECTION "A-A"
SCALE: 3" = 1'-0"

U.L. NOTE

THIS SIGN IS INTENDED TO BE INSTALLED IN ACCORDANCE WITH THE REQUIREMENTS OF ARTICLE 600 OF THE NATIONAL ELECTRICAL CODE AND/OR OTHER APPLICABLE LOCAL CODES. THIS INCLUDES PROPER GROUNDING AND BONDING OF THE SIGN.

ELECTRICAL LOAD

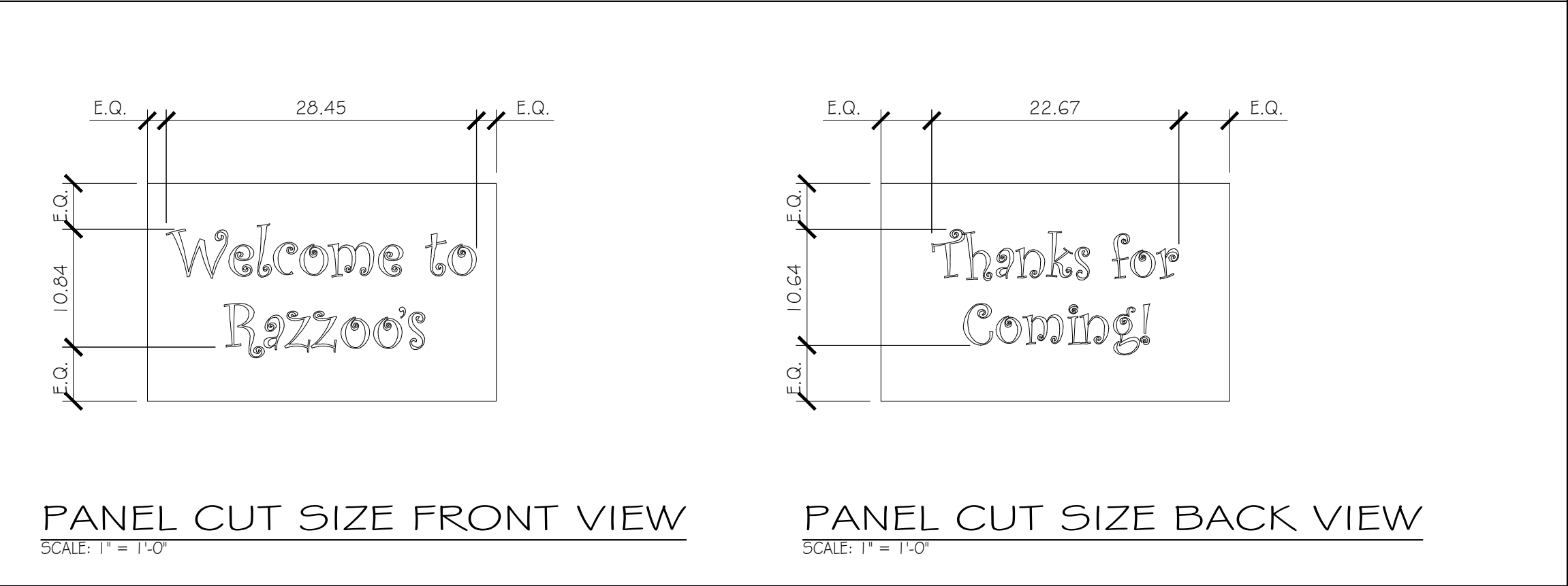
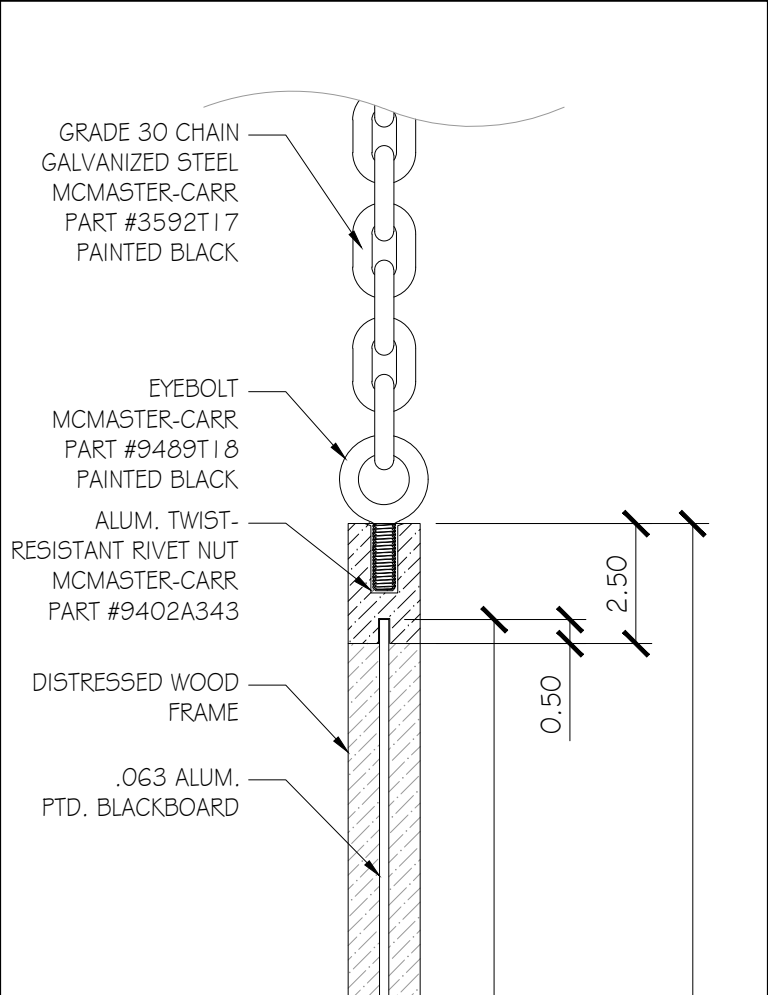
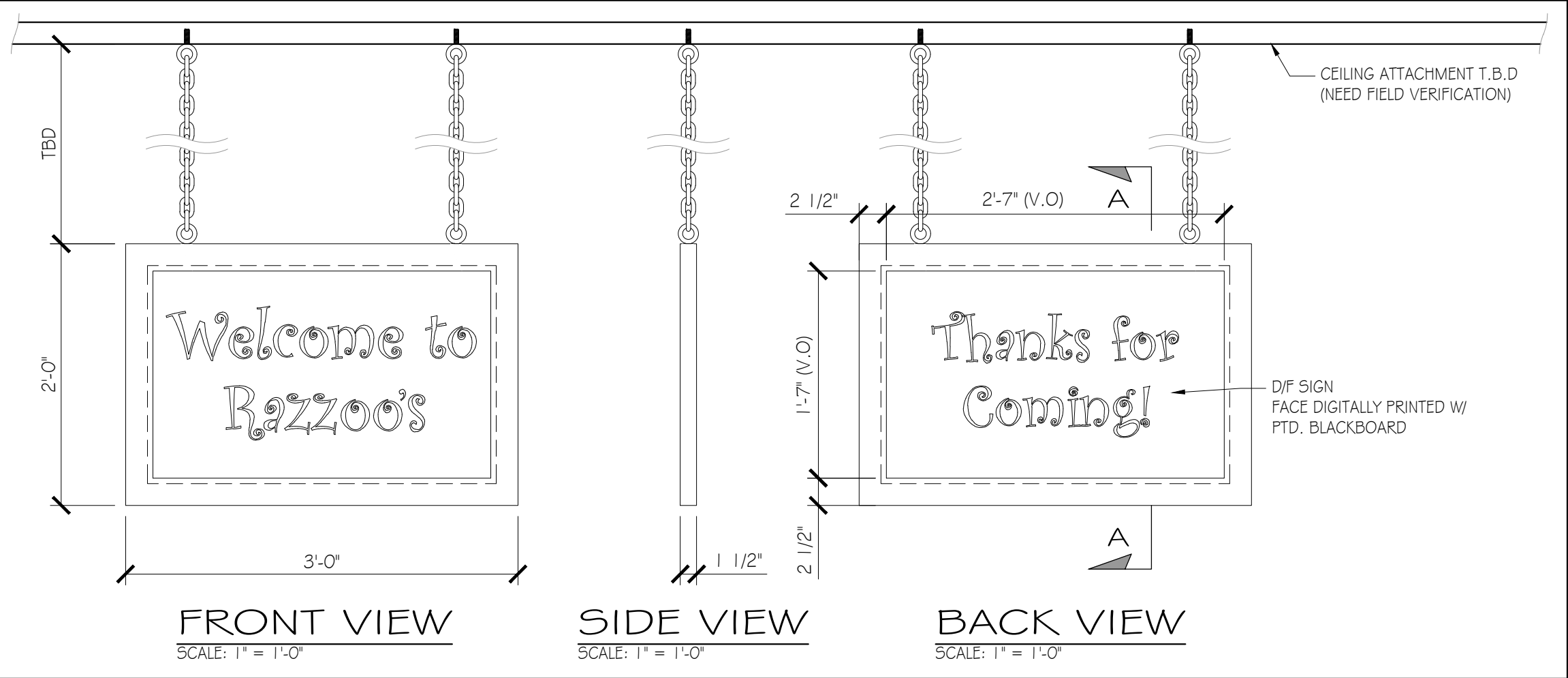
4 AMPS @ 120 VOLTS

ELECTRICAL REQMTS

(1) 20 AMP CIRCUIT

ARTWORK NOTE:

ARTWORK SHOWN ON THIS DRAWING IS SHOWN FOR REPRESENTATION ONLY. ACTUAL ARTWORK TO BE PROVIDED PRIOR TO FABRICATION

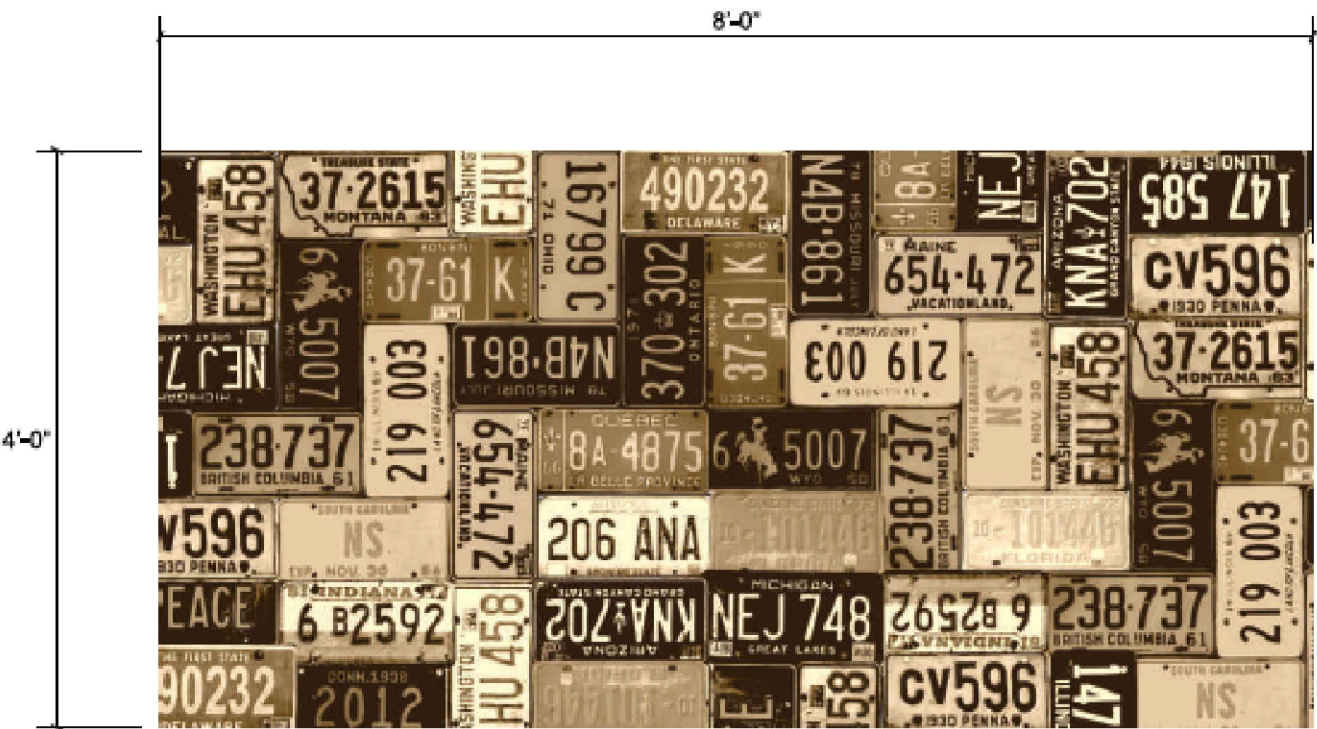


OPTION 1 - FULL COLOR - REPEATED PATTERNS



SCALE: 3/4"=1'-0"

OPTION 2 - SEPIA TONAL - REPEATED PATTERNS



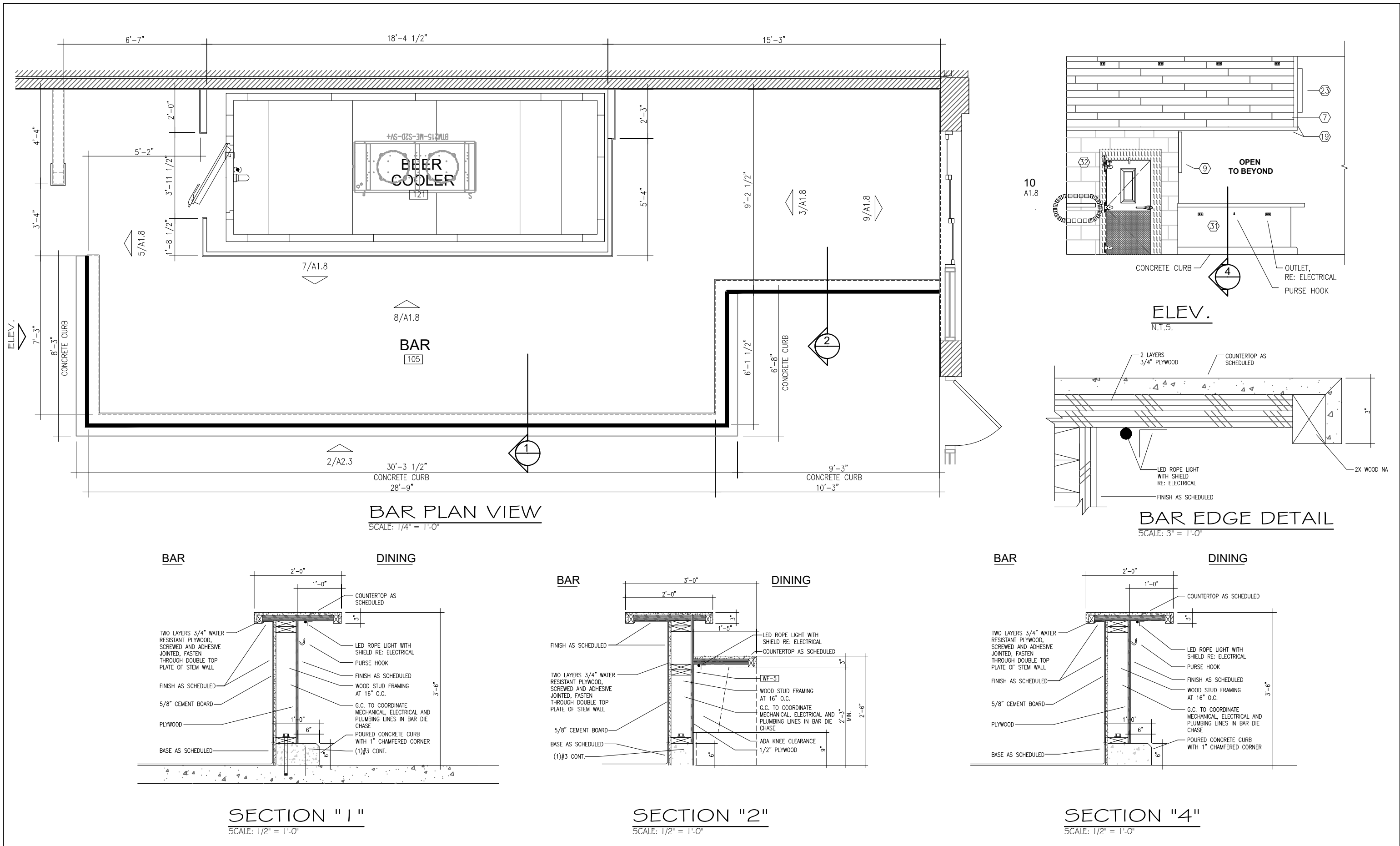
SCALE: 3/4"=1'-0"

WALL GRAPHIC

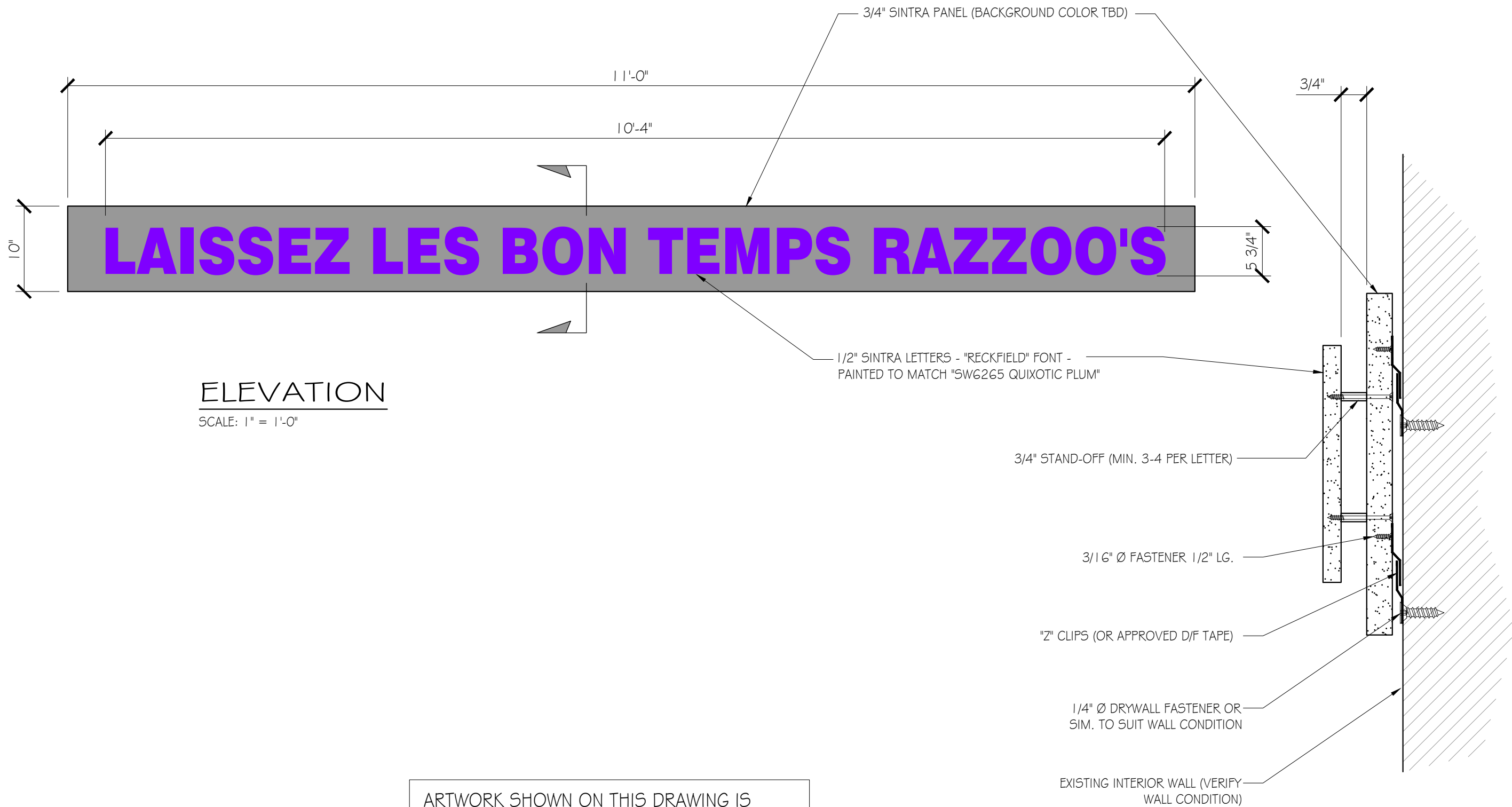
SPECIFICATIONS

- .040" ALUMINUM PANELS W/HIGH RES PRINTED GRAPHICS

REVISIONS			
REV	DATE	DESCRIPTION	BY



REVISIONS			
REV	DATE	DESCRIPTION	BY
-	-	-	-



ELEVATION

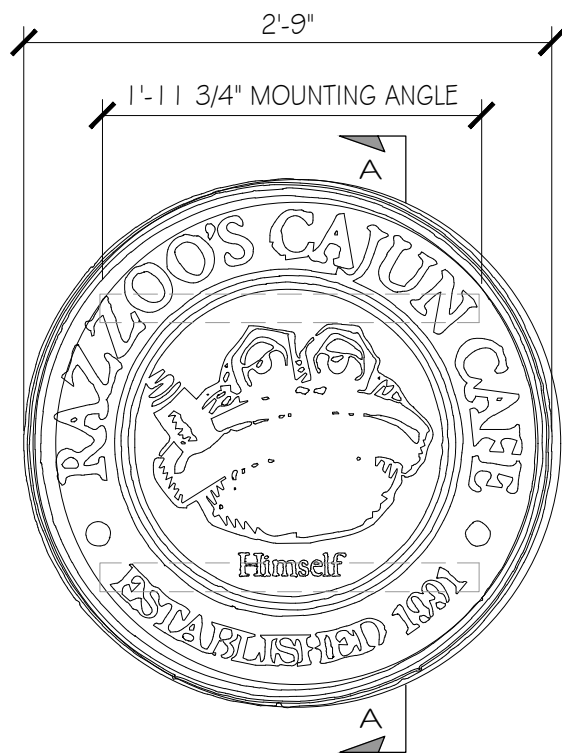
SCALE: 1" = 1'-0"

SECTION

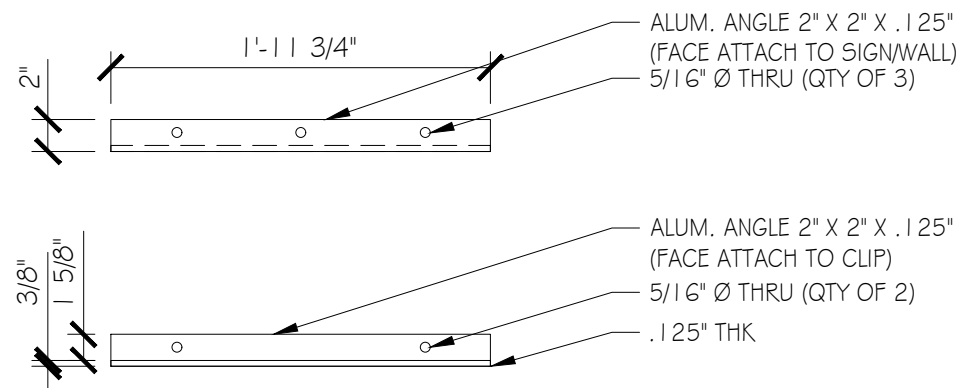
SCALE: 3" = 1'-0"

ARTWORK SHOWN ON THIS DRAWING IS SHOWN FOR REPRESENTATION ONLY. ACTUAL ARTWORK TO BE PROVIDED PRIOR TO FABRICATION

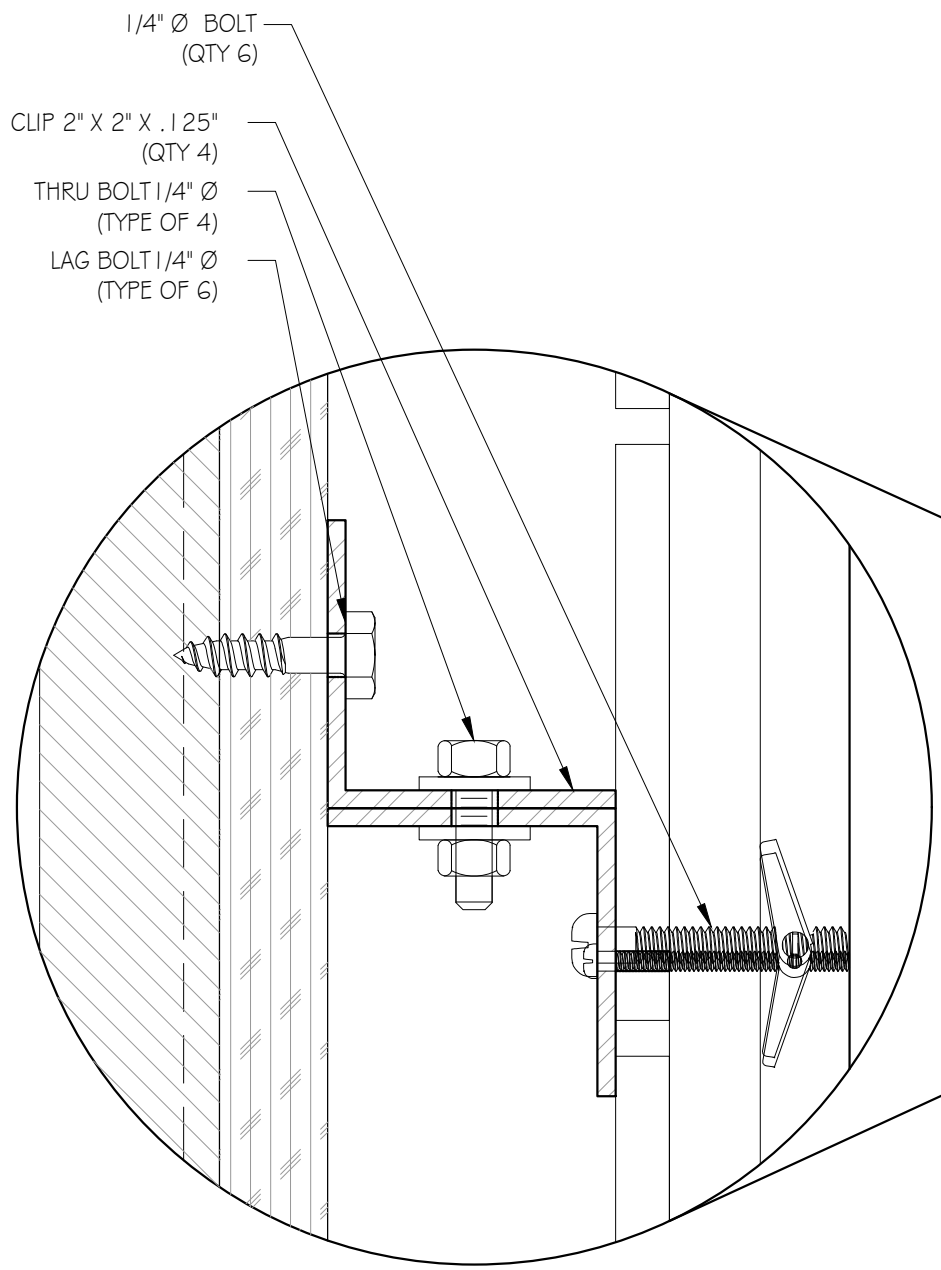
REVISIONS				
REV	DATE	DESCRIPTION	BY	
-	-	-	-	



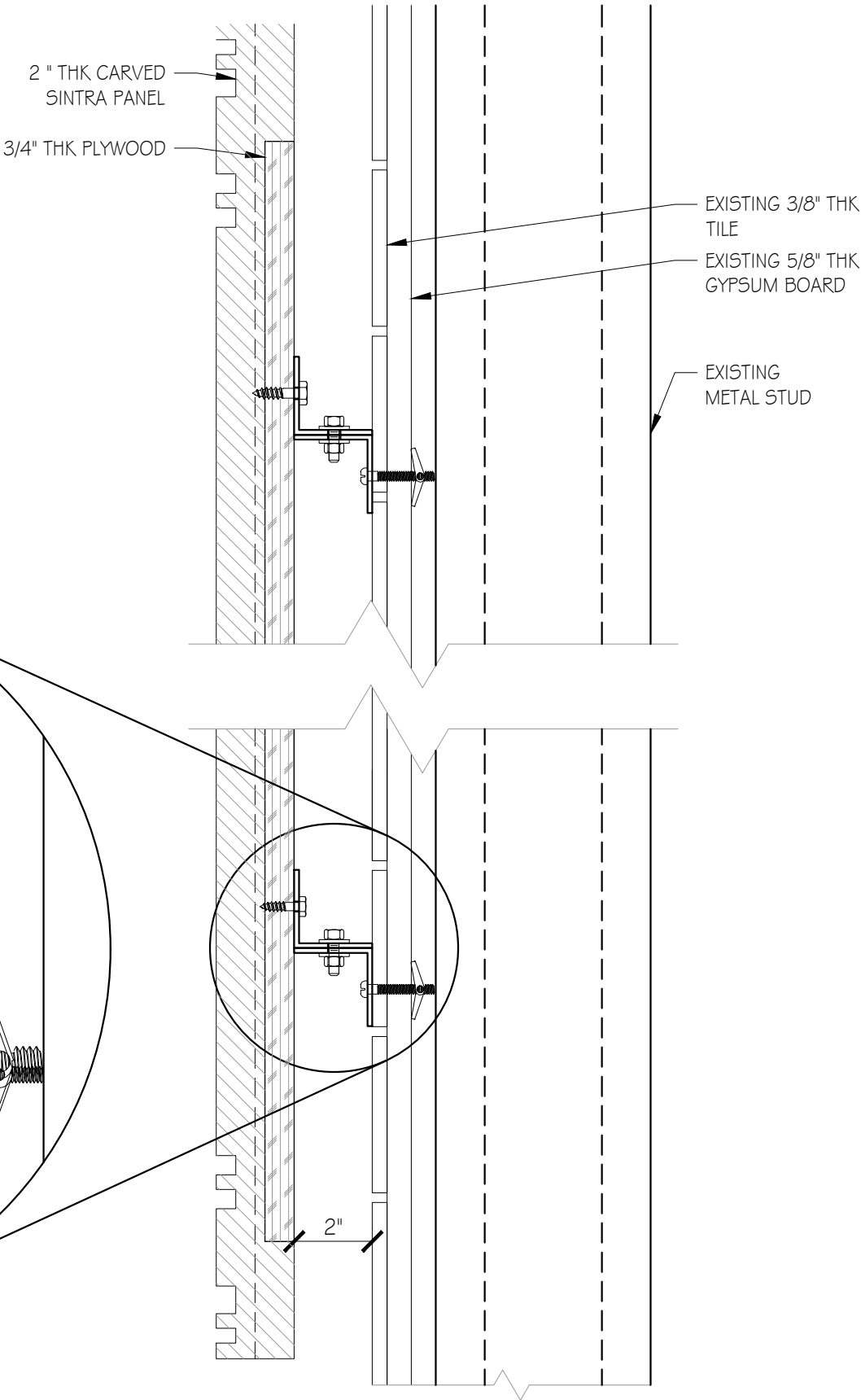
"HIMSELF" MEDALLION - QTY 1
SCALE: 1" = 1'-0"



MOUNTING ANGLE DETAIL (QUANTITY OF 4)
SCALE: 1" = 1'-0"
PTD. TO MATCH EXIST. WALL



DETAIL B
SCALE: 6" = 1'-0"



SECTION AA VIEW
SCALE: 3" = 1'-0"

REVISIONS			
REV	DATE	DESCRIPTION	BY
-	-	-	-