

# Industrial Pump Station Expansion / Alsbury Pump Station Decommission Project Update



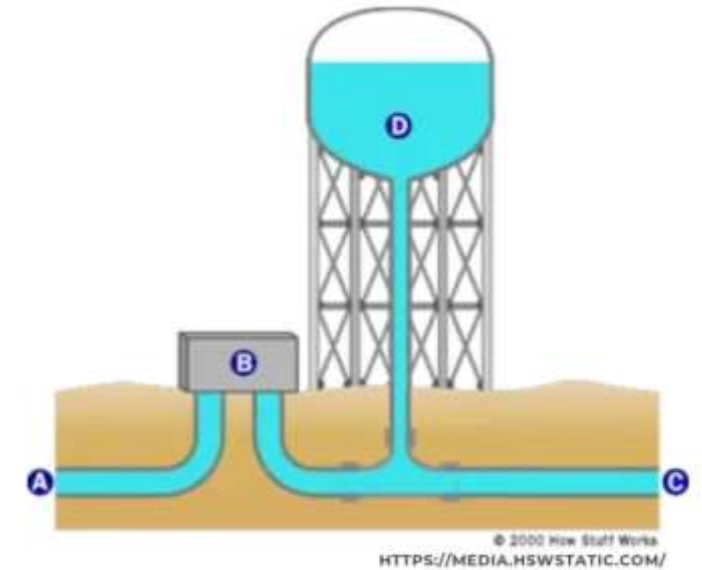
# Agenda

- Project Background
- Project Status Update
- Committee Feedback



# Background

- FY23 Five-Year CIP for Water included two strategically coordinated projects focused on providing build-out water supply
  - \$7.355m distributed over FY23 – FY25 for expansion of the Industrial Pump Station and Decommissioning of the Alsbury Pump Station
  - \$16.268m distributed over FY24 – FY26 for Burleson’s pro-rata share of the cost of the pipeline to bring additional water supply from Fort Worth
- City Council awarded design contract to Kimley-Horn March 6, 2023 (\$1.155m) for the pump stations project
- City Council approved an amendment to the wholesale water supply agreement with Fort Worth December 11, 2023 (with slightly updated cost estimate of \$16.332m)
- Staff updated Infrastructure & Development Committee in January 2024 on updated cost estimate for the pump stations project (\$17.665m total, \$15.913 construction)



- A. Input water from Fort Worth
- B. Pump Station
- C. Water from pumps or storage to distribution lines
- D. Storage (either elevated or ground tanks)

# Pump Stations Project Update



- Conceptual Analysis to confirm scope details completed August 2023 and recommended changes to match updated build-out needs and align with additional supply from Fort Worth
  - Increase in pumping capacity expansion from 4 MGD to 8.5 MGD
  - Addition of a two million gallon ground storage tank
  - Total Construction Estimate \$16.11m
- Survey, geotechnical investigation, and preliminary engineering began October 2023
- Property appraisal underway for land acquisition
- Draft Preliminary Design Report completed March 2024 (\$15.58m construction)

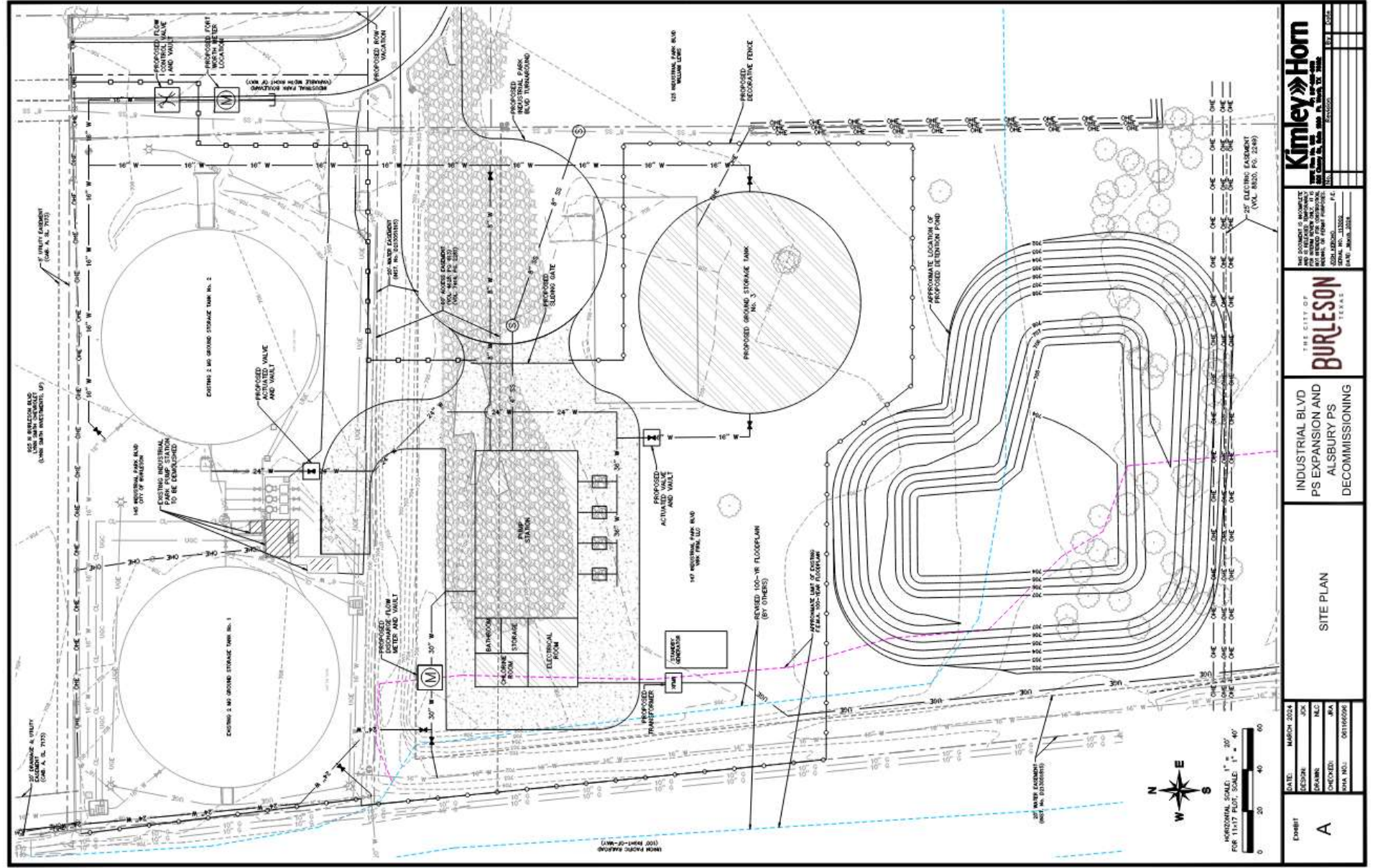
*will necessitate an update to the Five-year Water CIP as was presented to the committee in January*



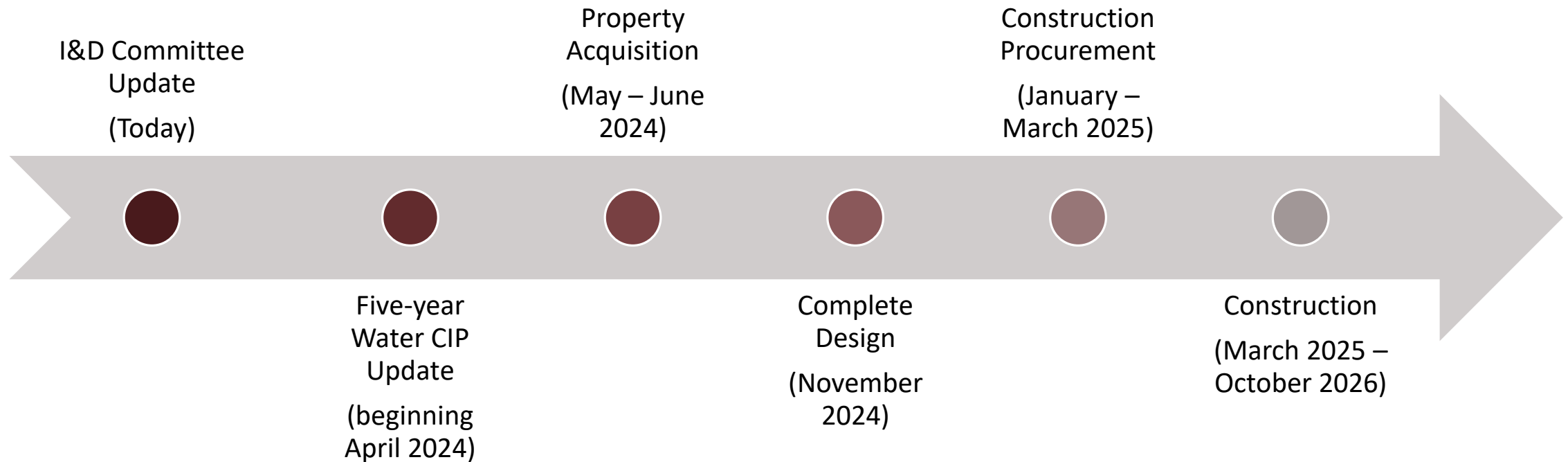
# Preliminary Design Overview

Includes:

- New pump station building to ultimately house four – 5,000 gpm pumps
- 750kVa generator
- 2 MG ground storage tank
- Stormwater detention
- 8' masonry fencing



# Project Schedule Forecast



# Questions / Discussion

Errick Thompson  
Director of Public Works & Engineering  
ethompson@burlesontx.com  
817-426-9610