

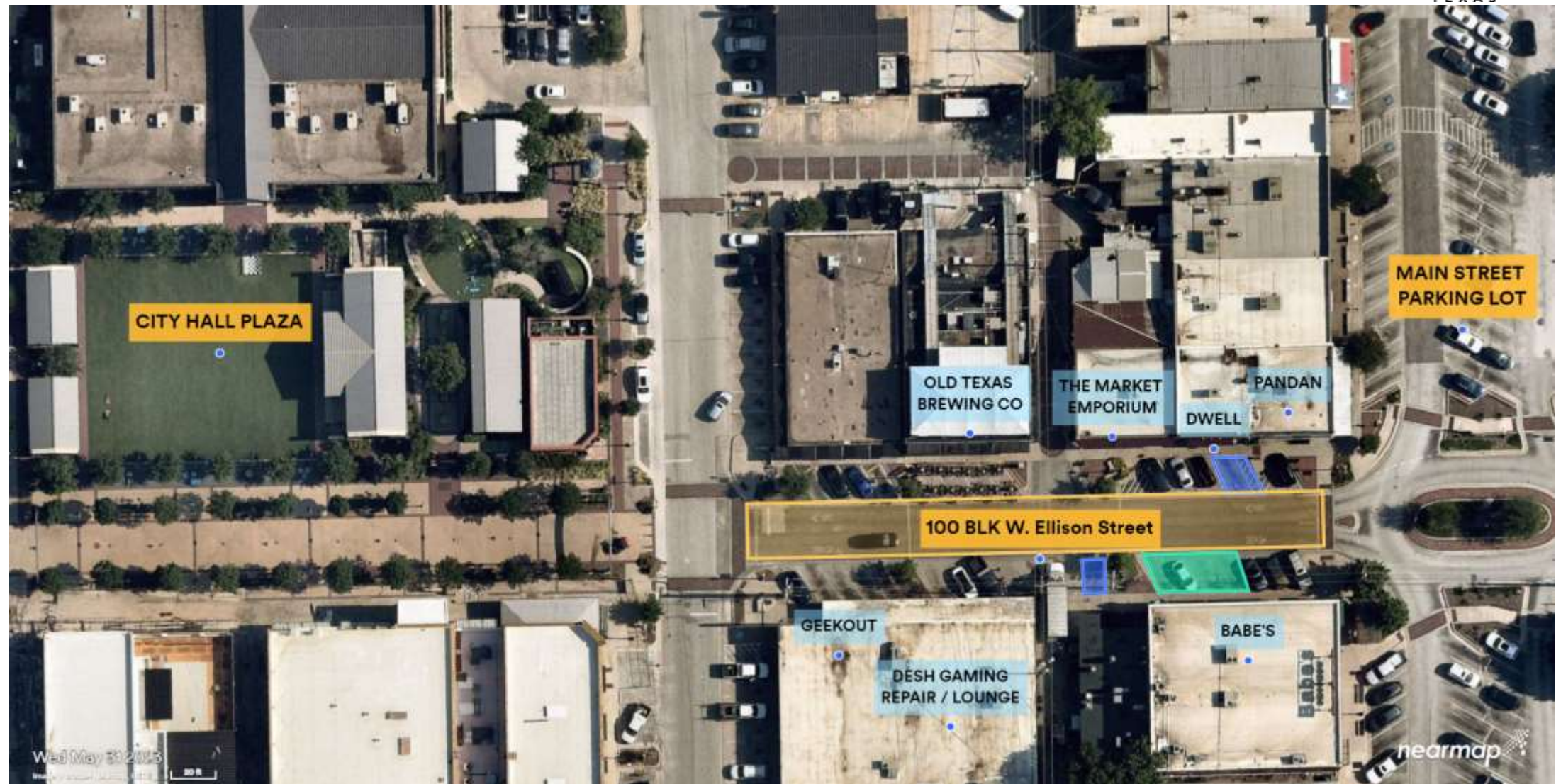
Temporary Closures of W. Ellison Street



Background

- I&D Committee requested an upcoming item to discuss options for temporary closures of the 100 block of W. Ellison
- Existing Conditions
- Options for Discussion

Background



History

- With the Plaza and Ellison developments, a total of 90 parking spaces were lost - parking lot at City Hall (47 spaces), ROW parking on Ellison (17 spaces), and former Wood Shopping Center (26 spaces)
- Developments have also added spaces: Bufford Lot (77), N. Main Street (53), and additional ROW parking on Wilson (48), Warren (26), Bufford (40) and the redesign of the West City Hall lot – total of 244 spaces gained

Net Gain: 154 spaces

In addition, the East Ellison Realignment and Parking Project currently under construction will ultimately add an additional 83 on- and off-street public parking spaces over the next year

Existing Conditions



Outdoor Seating (by agreement)

Curbside To Go Parking at Babe's (by agreement)



Existing Conditions

100 Block of W. Ellison has:

- Five different building owners and seven tenants
- 28 parking spaces and 2 handicap spaces
- Food and beverage deliveries as well as trash services to be considered

Options for Consideration

1. Ad-hoc Closures by Individual Special Event Permits
2. Calendar-based Closures, for example:
 - A. “First Fridays”
 - B. “Second Saturdays”
 - C. Weekends April – September
3. Other
4. Business owner engagement

Questions / Discussion

Errick Thompson
Director of Public Works & Engineering
ethompson@burlesontx.com
817-426-9610