

TOWN CREEK BASIN PARALLEL SEWER INTERCEPTOR

Professional Services Agreement



PROJECT BACKGROUND

OVERVIEW

- Current water / wastewater masterplan recommends an additional parallel interceptor line (12,500 LF) placed along the same alignment as the existing line interceptor to accommodate additional flows in response to significant growth
- Current Capital Improvement Program funds the project (design in FY23, construction in FY24)

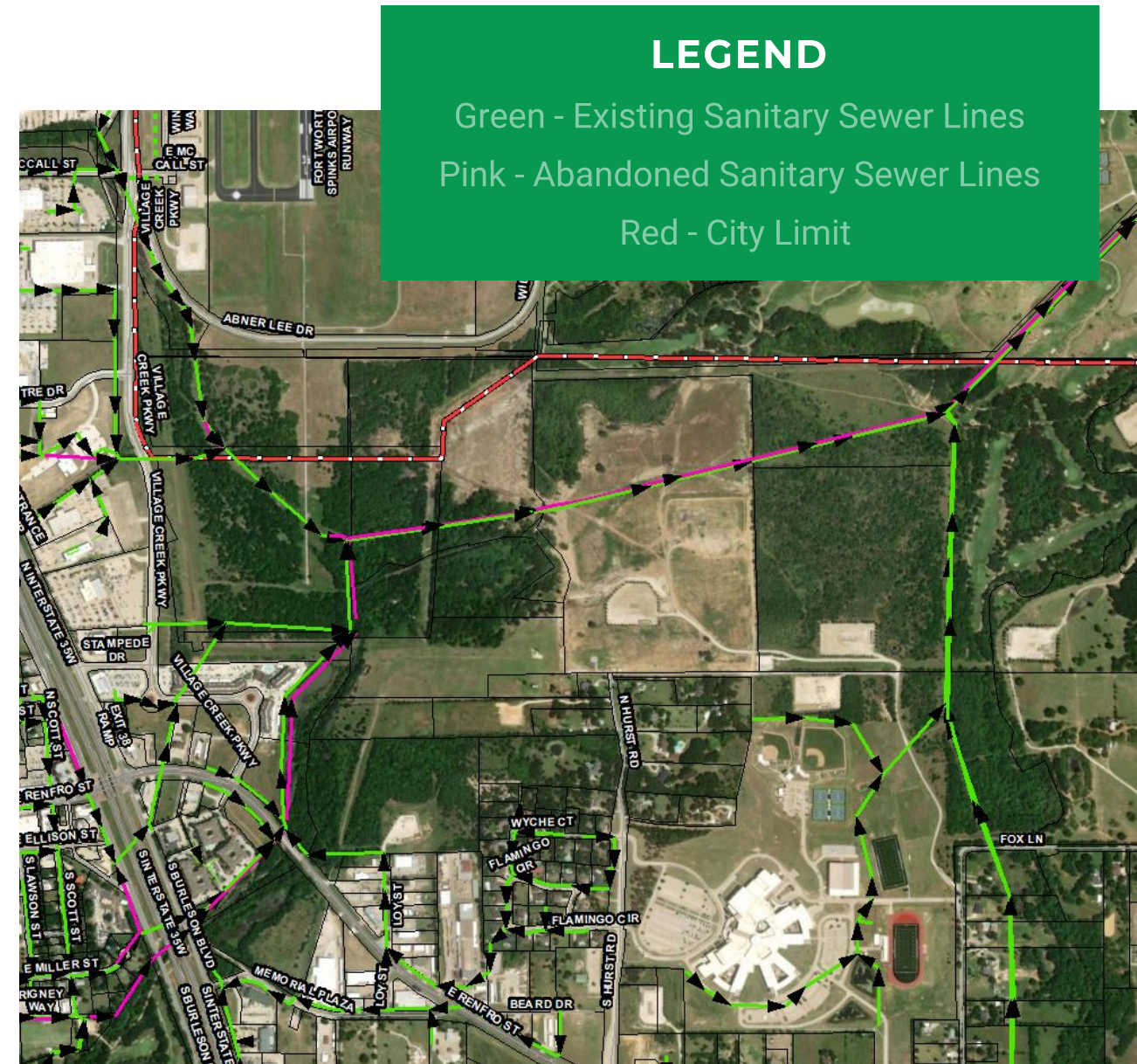
CURRENT CIP FUNDS DESIGN IN FY 23 – BUDGET \$2,493,569



EXISTING SYSTEM

TOWN CREEK SEWER LINE IS A CRITICAL COMPONENT OF THE SYSTEM

- Existing line ranges from 30" to 36" in diameter and terminates at a metering station near the Southern Oaks Golf Course
- All sewer wastewater from Burleson currently flows through part of this line en route to City of Fort Worth treatment plant
- Existing line replaced and runs parallel to an abandoned 18" - 27" diameter line



PROPOSED PROFESSIONAL SERVICES AGREEMENT

Stantec Consulting Services, Inc. was selected through a procurement process to provide engineering design services at a negotiated fee of \$2,318,936.31



TOPOGRAPHIC SURVEY & EASEMENT PREPARATION



GEOTECHNICAL INVESTIGATION

Provided by D&S Engineering Labs



SUBSURFACE UTILITY ENGINEERING AND COORDINATION

Provided by Cobb, Fendley & Associates, Inc.



FULL DESIGN INCLUDING NEW METER STATION



ENVIRONMENTAL ASSESSMENT AND PERMITTING



HYDRAULIC ANALYSIS

Significant environmental, permitting, and geotechnical effort required

MAJOR PROJECT ELEMENTS

PERMITTING AND COORDINATION

- TXDOT coordination for IH-35W and Renfro crossings
- City of Fort Worth for meter station coordination and aviation department
- Southern Oaks Golf Course for portion impacting their property

CREEK CROSSINGS

ENVIRONMENTAL PERMITTING

Protected Species, Section 404 (USACE), Texas Historic Commission (THC), etc.



PROJECT COSTS AND SCHEDULE



DESIGN

Design: Spring 2023 - Summer 2024

\$2,318,936.31

(This action)



CONSTRUCTION

Construction: Fall 2024 - Spring 2026

Preliminary Estimate: \$14,500,000

Construction Administration and bid support services to be considered Summer 2024 as design nears completion and scope can be more closely defined

OPTIONS

RECOMMENDED



APPROVE

Approve of a professional services agreement with Stantec Consulting Services, Inc. in the amount of \$2,318,936.31



DENY

Deny a professional services agreement with Stantec Consulting Services, Inc. in the amount of \$2,318,936.31

