



Economic
Development

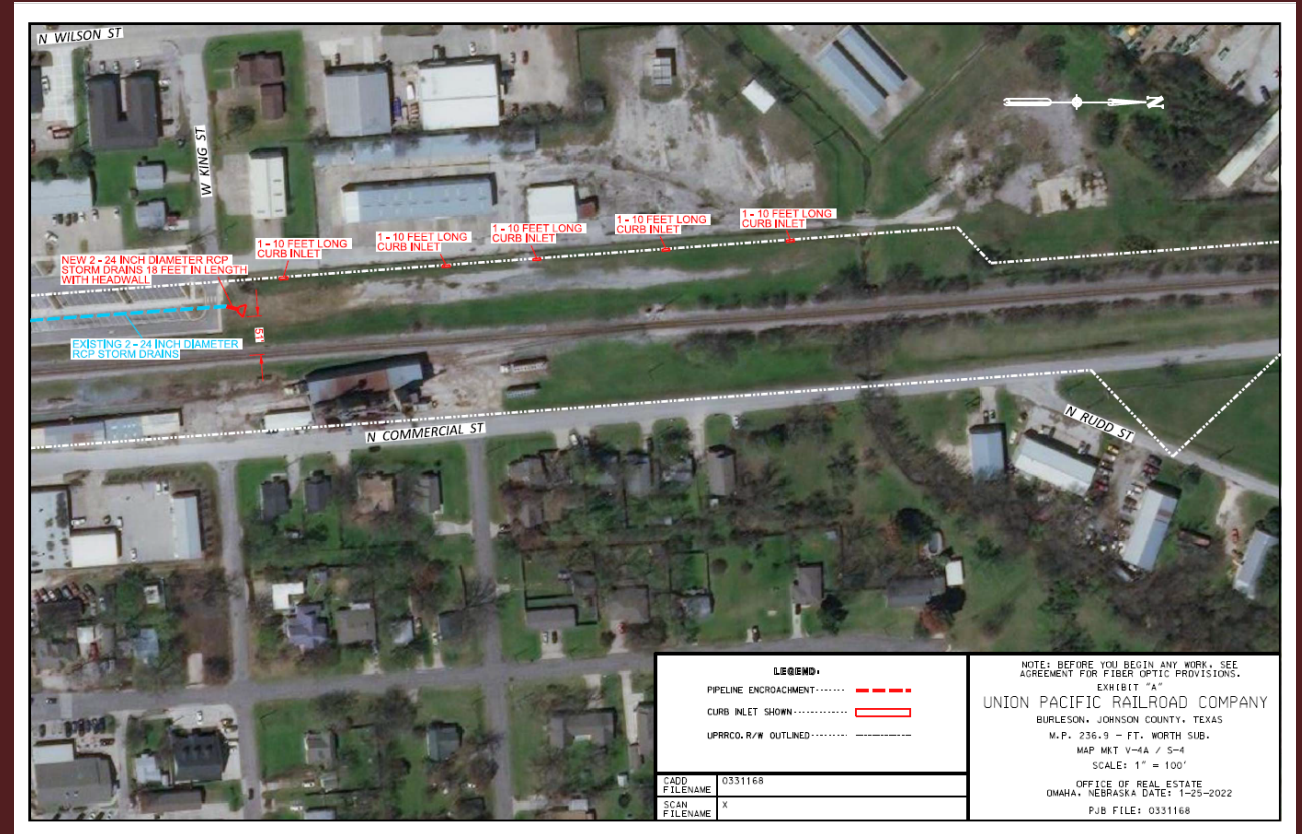
Union Pacific Lease Agreement

Old Town Right-of-Way



Union Pacific Right-of-way

- This agreement supplements existing lease for parking and sidewalks for needed public drainage storm drain and inlets along Main St.
- (2) 24" storm drains and (5) curb inlets will be installed in and adjacent to UP ROW
- City previously agreed to utilize and lease UP ROW to facilitate public improvements
 - Per agreement, RCM will install and City will maintain public infrastructure
- One time fee: \$28,380
- Use of the ROW does not hinder the possibility of future public parking in this area



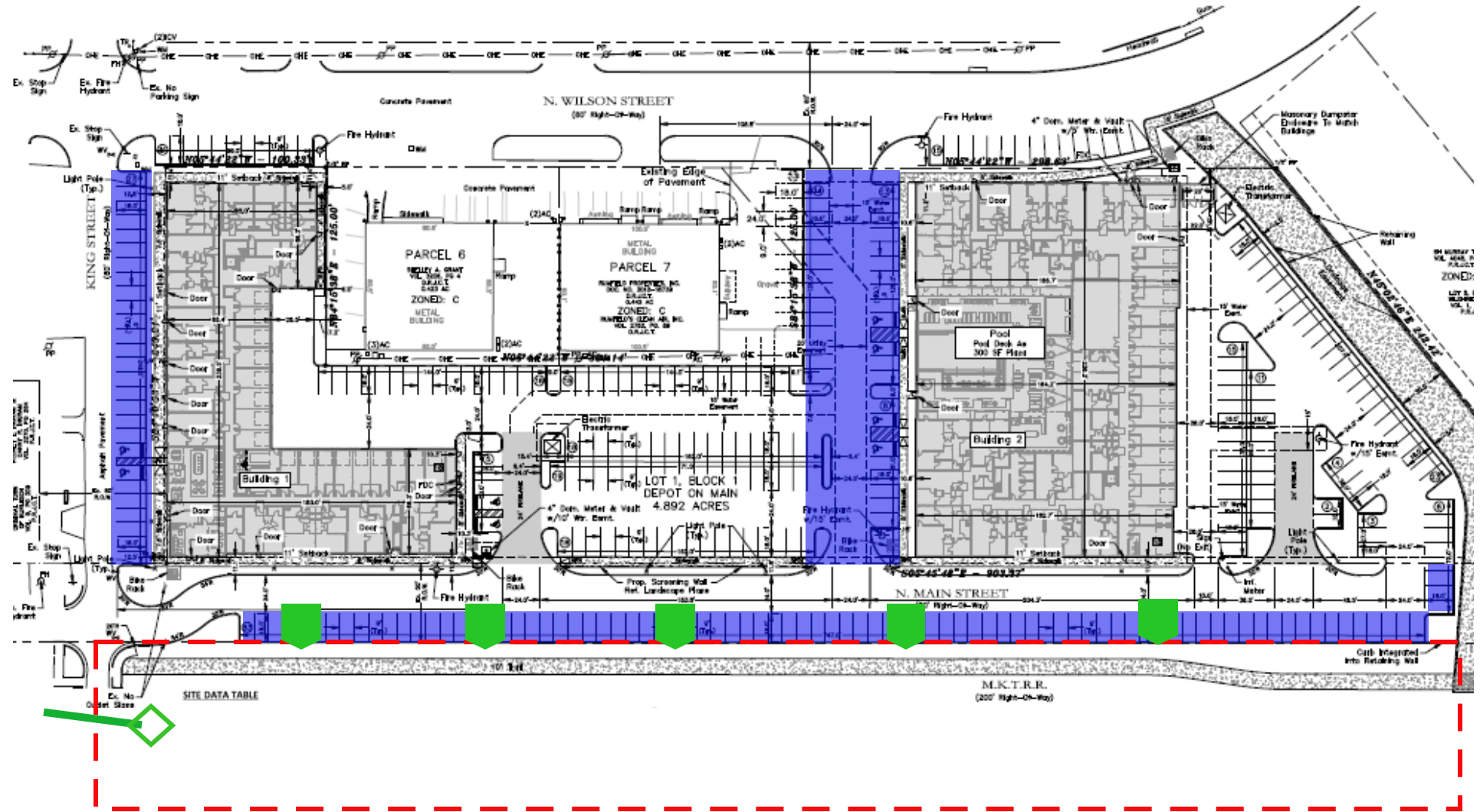
Drainage Improvements and Adjacent Parking

UP ROW

Public Parking

• 152 Spaces

(2) 24" storm drains
(5) curb inlets





Requested Action



Approve

Approve a Longitudinal Pipeline Agreement between Union Pacific Railroad and the City of Burleson



Deny

Deny a a Longitudinal Pipeline Agreement between Union Pacific Railroad and the City of Burleson

Staff Recommends Approval