



# Concrete Street Repair Contract

---

PRESENTED TO THE CITY COUNCIL: NOVEMBER 18, 2024

# Background



- On November 4th, staff provided City Council with an update on the calibration and field verification process of the street maintenance plan, as well as a discussion of the program's timeline.
- Council was presented with two options and unanimously directed staff to bring back a concrete repair contract to begin immediate repairs along Hidden Creek Parkway, Alsbury, and Renfro Street.
- This work will contribute to the city of Burleson's overall street maintenance operations.

# Background Continued

Staff anticipates \$900,000 in concrete repairs over the next several months.

	Estimated Cost	Comments
<b>Proposed work to begin after January 1, 2025</b>		
15 locations along Hidden Creek Parkway Between SH 174 and E. Renfro (approximately 36,000 sy) <b>PLUS</b> additional locations along NW Renfro and Alsbury	\$700,000	FY 24-25 Street Maintenance Fund
<b>Existing locations underway</b>		
Alsbury Blvd – 3 locations	\$110,000	FY 23-24 Operating Budget
Hidden Vistas	\$49,000	FY 23-24 Operating Budget
<b>Work completed since August 5, 2024</b>		
1200 Blk Hidden Creek Parkway	\$16,800	FY 23-24 Operating Budget
NW Renfro and Silver Ridge	\$20,530	FY 23-24 Operating Budget
HW 174 and Hidden Creek Parkway	\$10,640	FY 23-24 Operating Budget

# Major Thoroughfares

- Staff initiated a review of locations along Hidden Creek Parkway, Alsbury Boulevard, and Renfro Street in preparation for presenting options to Council at the November 4th meeting.
- This process involved identifying areas with known failures, with Public Works inspecting each site, measuring quantities, and marking locations.
- These identified locations were then shared with a list of contractors who hold existing contracts with the City of Fort Worth and Tarrant County to obtain pricing.

## Hidden Creek Parkway

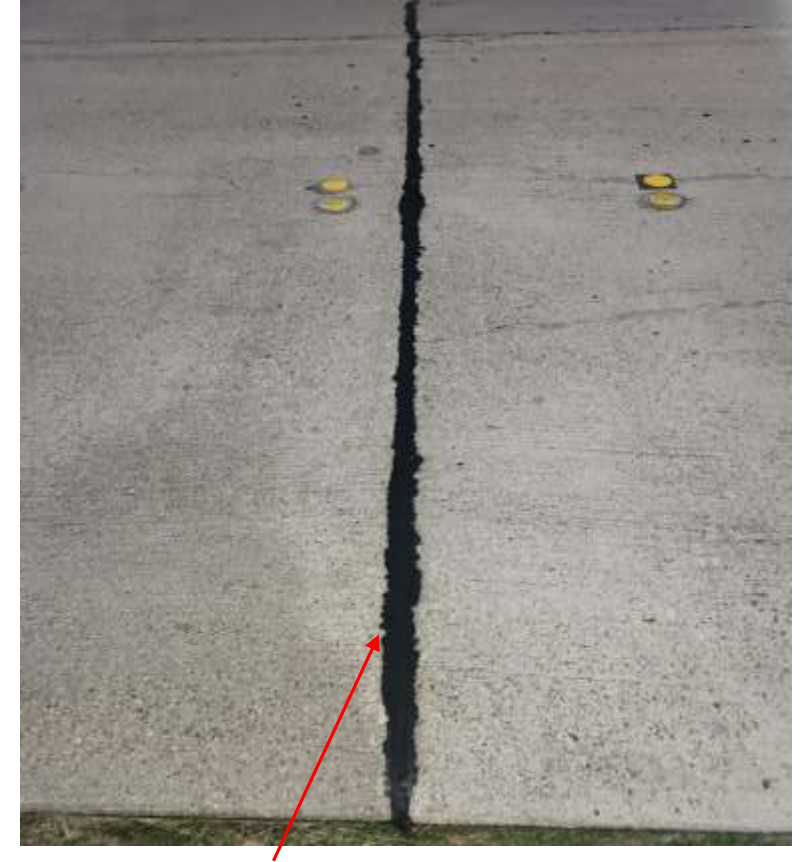
This work will focus on fully rebuilding some of the most deteriorated sections along Hidden Creek Parkway, as well as selected areas along Alsbury Boulevard and Renfro Street.

Example location of Hidden Creek near Hidden Lake Drive and Fire Station 16.





# Hidden Creek and Hidden Oaks Drive



Proper joint seal to prevent water penetration

# Hidden Creek and Lisa St.





# Hidden Creek and Cardinal Ridge







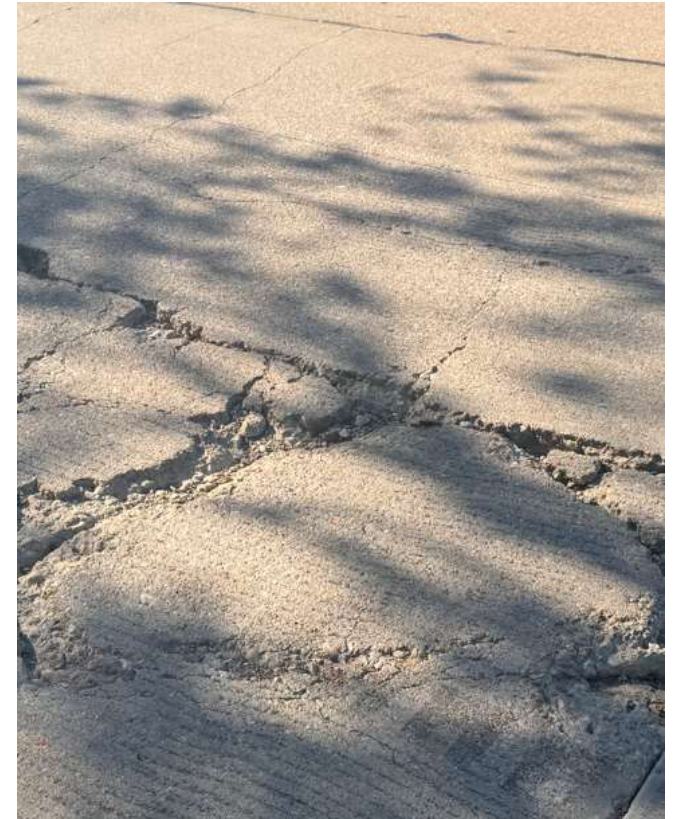
# NW Renfro St and Clover St.





## NW Renfro St. and Cliffside Dr.

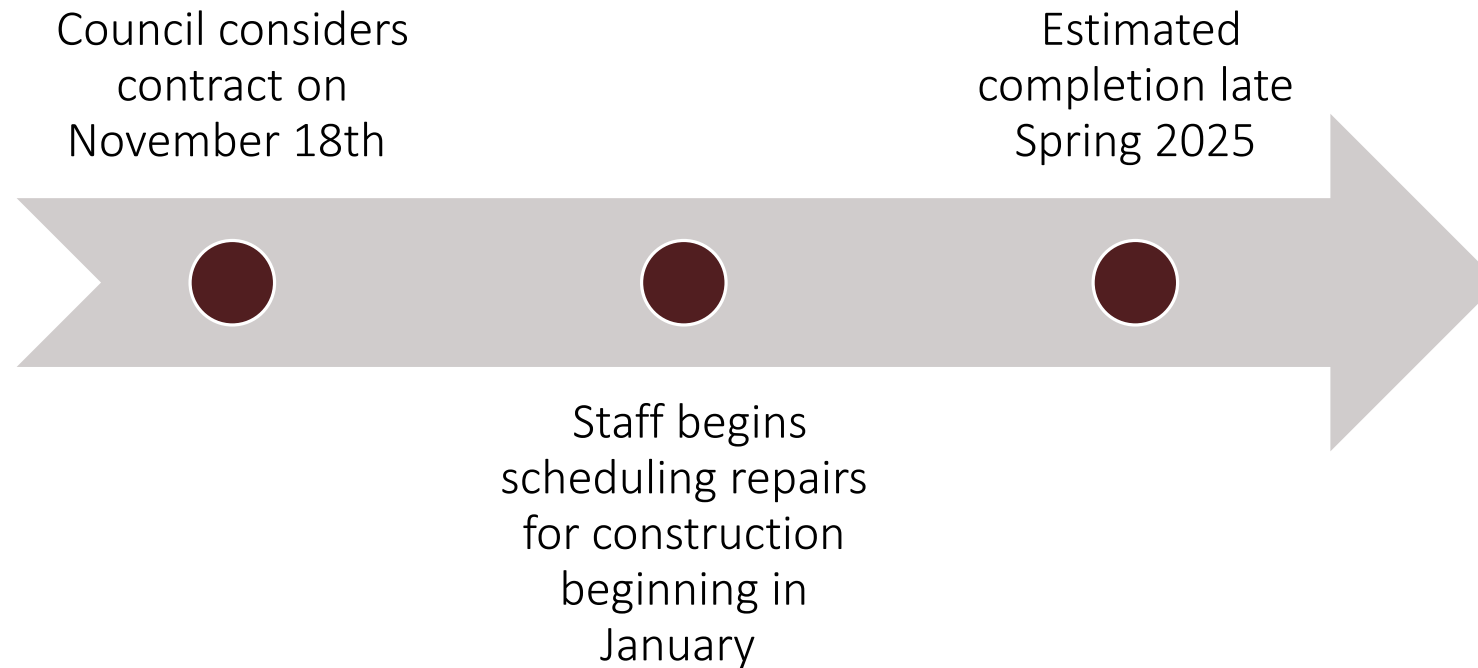




# Alsbury Blvd. and Tarrant



# Timeline



# Recommendation



Approve a contract with Reliable Paving, Inc. through an agreement with Tarrant County, Texas miscellaneous concrete repairs in an amount of \$700,000.

# Questions/Comments

Justin Scharnhorst  
Deputy Director of Public Works  
[Jscharnhorst@burlesontx.com](mailto:Jscharnhorst@burlesontx.com)  
817-426-9646