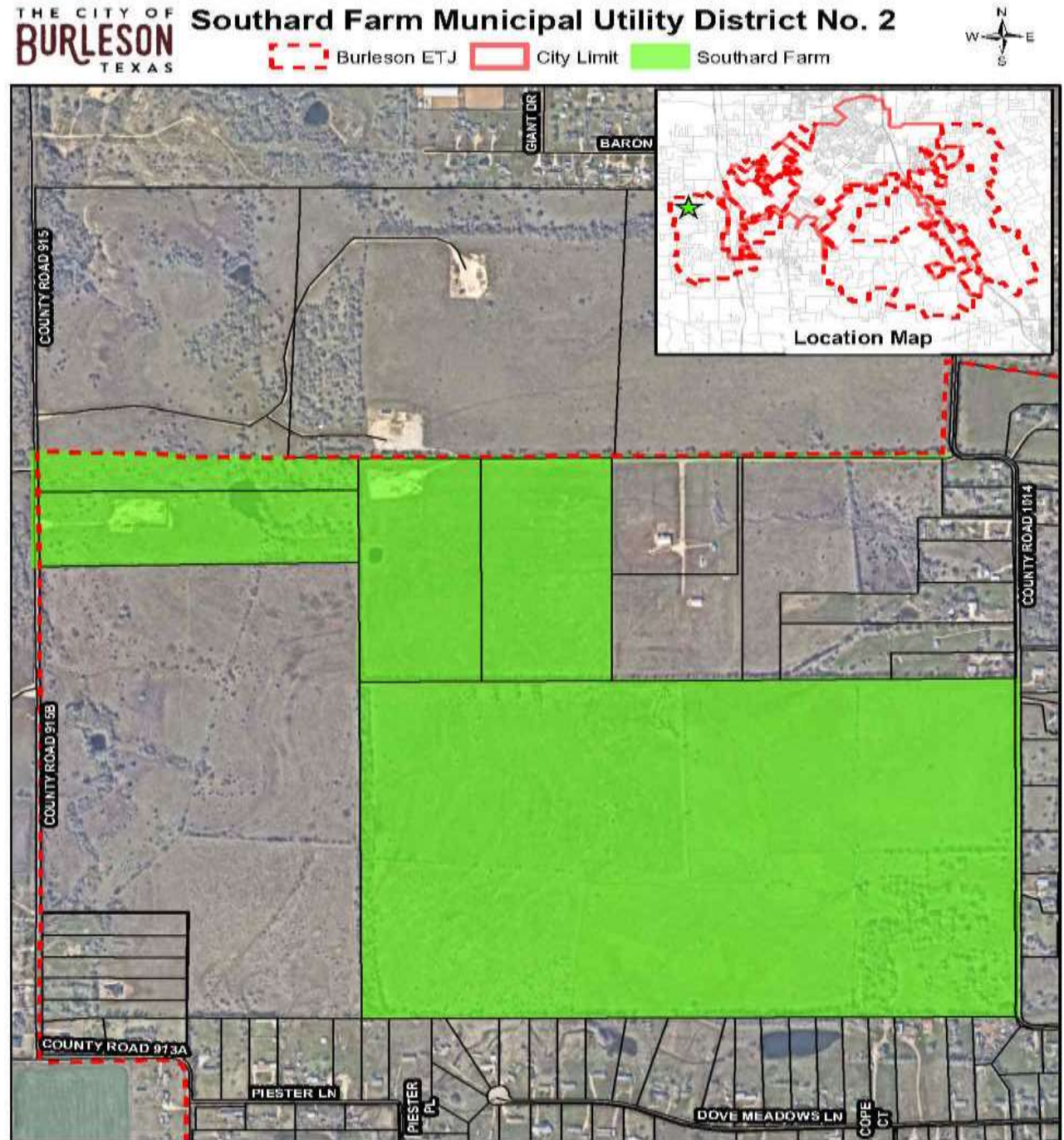




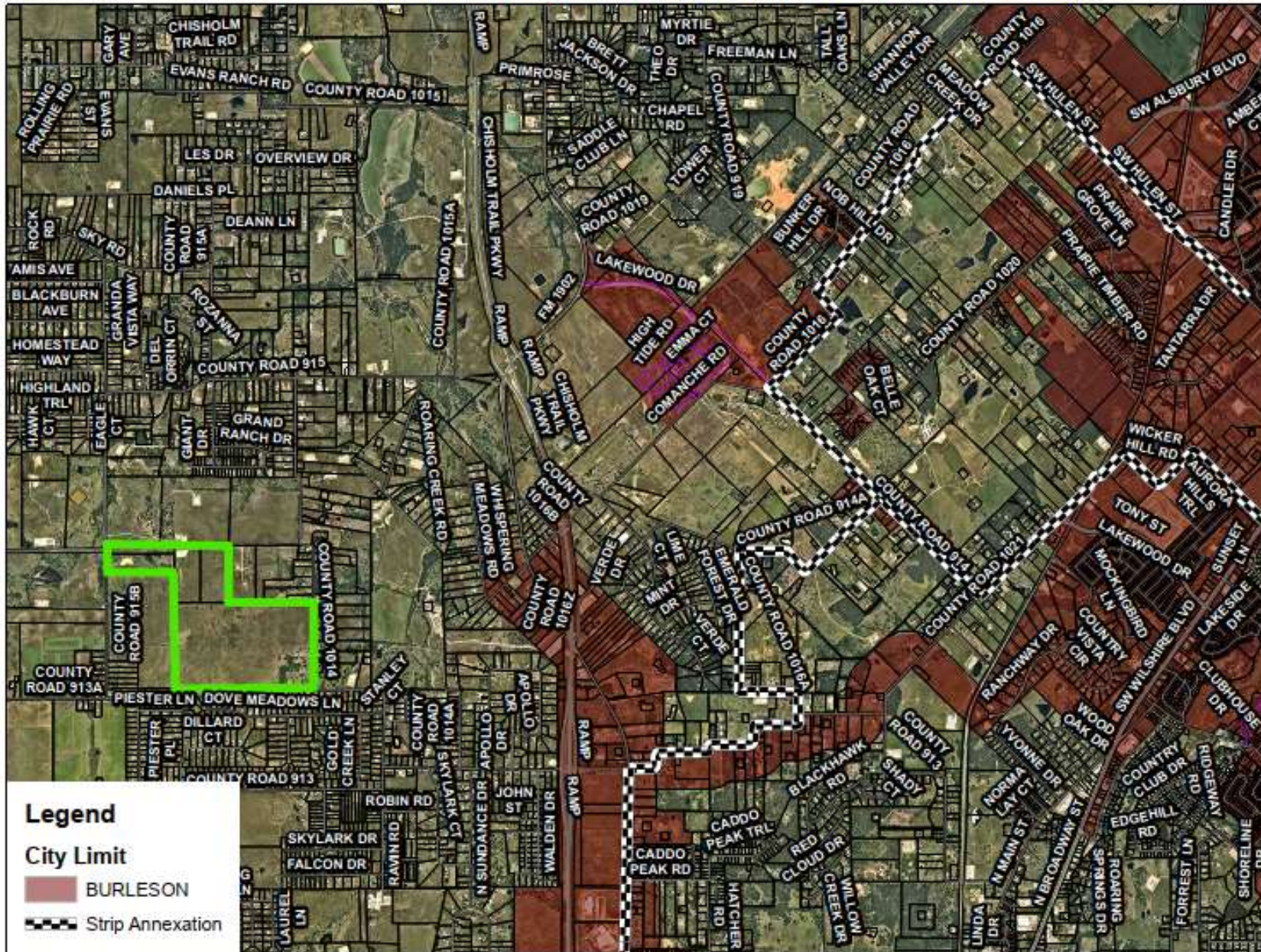
Southard Farm Municipal Utility District No. 2 of Johnson County

8.19.24: CITY COUNCIL MEETING

- On May 29th, city staff received a Petition for Consent for the Creation of the Southard Farm Municipal Utility District No. 2 of Johnson County.
- Staff has held two previous meetings with the developer.
- This project is located outside of the city limits, at 8113 CR 1014, which is west of the toll road.

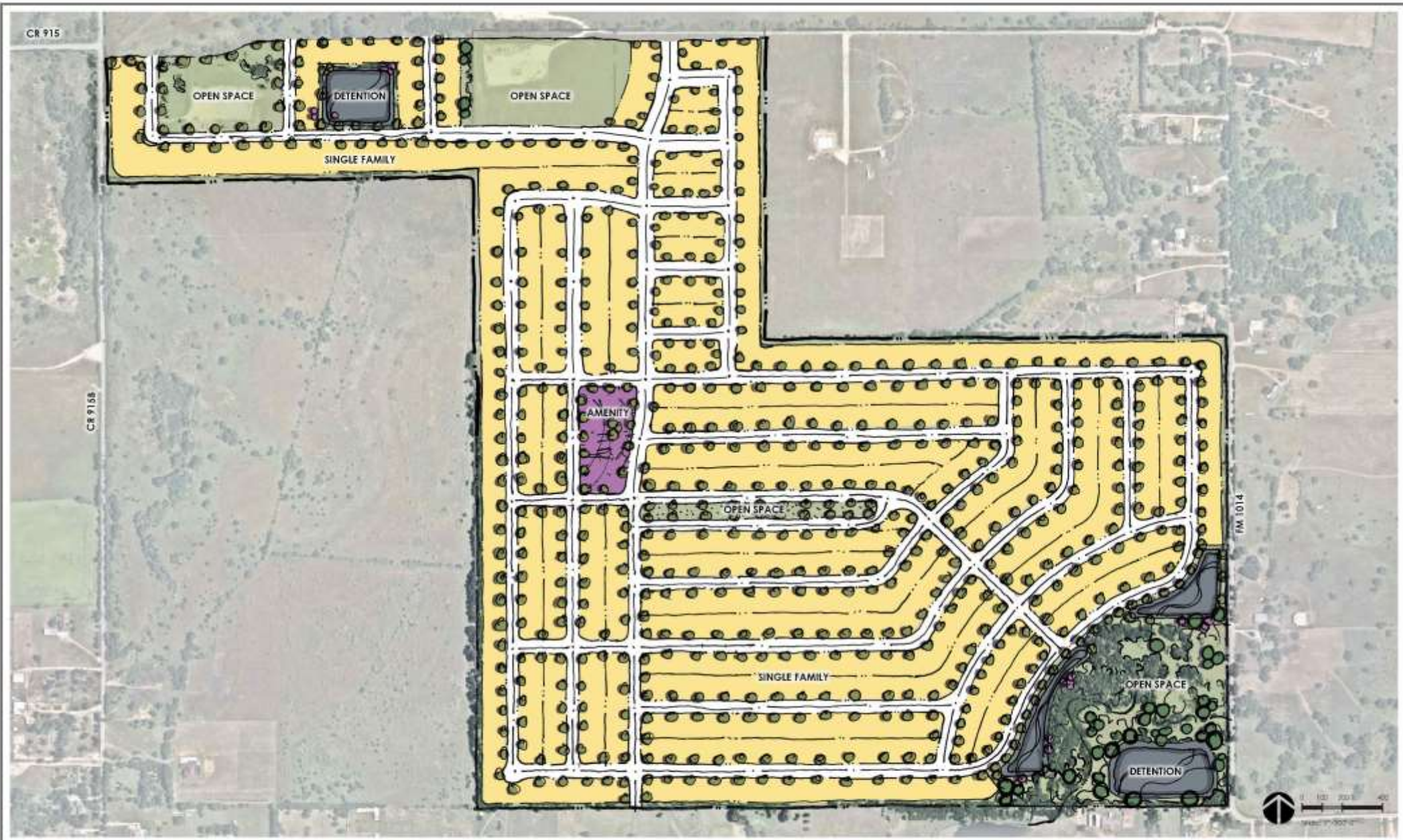


Southard Farm Municipal Utility District No. 2 Location Map



Southard Farm MUD Petition

<u>Southard Farms</u>
Approximately 284 acres (not contiguous to existing City limits)
Approximately 1,300 to 1,400 lots single family residential lots
Array of lot widths ranging from 40' to 60'
Market is targeted to first-time (or 1 st time move up) homebuyers
Roughly 1/3 of land area dedicated to roadways, easements
MUD will provide private wastewater treatment facility
Johnson Co. SUD will provide water



Southard Farm MUD Petition

- The property is not contiguous to city limits, and a portion of the northernmost section of the site is located outside of Burleson's ETJ.
- City has 90 days (August 27th) from the May 29th petition receipt date to provide its written consent (either a resolution or ordinance) to the creation of the MUD.

Southard Farm MUD Petition

- MUD proposal does not require the city's consent.
- The city cannot require annexation as a condition of consenting to MUD creation.
- Project can occur without city's consent and remain outside of corporate city limits.
- Development would be evaluated and reviewed like any other ETJ subdivision.

Southard Farm MUD Petition

- Options:
 - Approve the Southard Farm MUD Petition;
 - Deny the Southard Farm MUD Petition; or
 - Take no action on the Southard Farm MUD Petition.