

# REVISED SPEED ZONE ORDINANCE

Hemphill Street



# AREA OF REVIEW

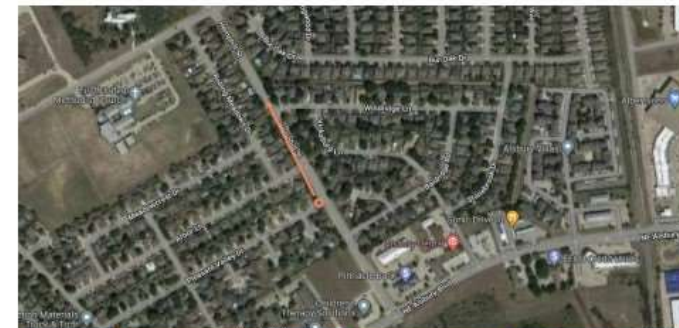
- Street Limits
  - Alsbury Blvd to north of Peach Lane
- Current Speed Limit
  - 35 MPH
- Signal Controlled
  - Alsbury Blvd
- Stop Controlled Intersections
  - McAlister Rd
  - Plum Dr



# BACKGROUND

- During the month of April 2022, Traffic Engineering and PD received complaints of speeding on Hemphill Street.
- From 5-9-22 through 5-11-22 PD conducted a speed survey, and asked Traffic Engineering to review.
- 9,251 vehicles surveyed during that period, 85th percentile was 43 MPH
- On 5-16-22 PD suspended speed enforcement, pending a full Traffic Engineering Study.
- On 6-30-22 Kimley Horn was authorized to conduct Traffic Engineering Speed Study.

## THE CITY OF BURLESON TEXAS

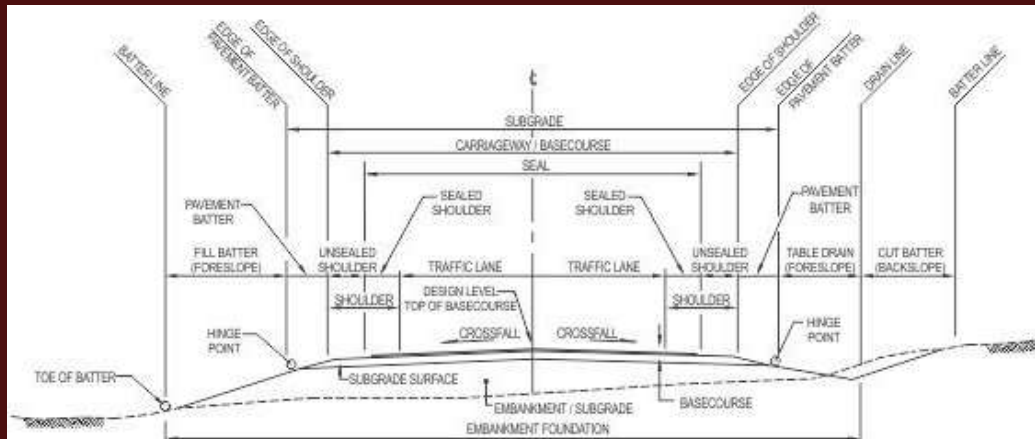


Survey Name	Hemphill St	Location	800th-900th Hemphill St, Burleson, TX	Speed Unit	Miles/Hour
Start	2022-05-09 10:55	Traffic Direction	Undefined	Speed Limit	35
Stop	2022-05-11 11:49	Zone		Min Speed Thres...	10
Operator		Min Following Time	0.0	Max Speed Thres...	160
Survey Direction	Both	Time Resolution	1	Speed Resolution	1
Survey Direction(s)	0.0				
Total Vehicle Count	9251	100%	Average Speed	37.7	MPH
Under Limit Count	2860	30%	Minimum Speed	13	MPH
Over Limit Count	6391	70%	Maximum Speed	79	MPH
10 Over Limit Count	761	8%	85Speed Percentile	43	MPH
			Average Speed Over Limit	40.3	MPH



# TRAFFIC ENGINEERING SPEED STUDY

- Considers adjacent land use.
- Conducts 24 hour traffic vehicle counts and speeds during a normal midweek day.
- Review similar roadways.
- Analyzes engineering roadway design.
- Verifies 85th percentile speeds.
- Compare to PD results.
- Make recommendations.



# RESULTS

- North bound traffic counted 2,530 vehicles in a 24 hour period, with the 85th percentile speed of 43 MPH
- South bound traffic counted 2,168 vehicles in a 24 hour period, with the 85th percentile speed of 44 MPH.
- Limited roadway connections, and no residential driveways connecting to Hemphill St.
- 85th percentile speed was approximately 43 MPH for both directions.



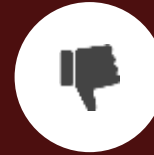
# OPTIONS

RECOMMENDED



**APPROVE**

Approve an ordinance altering the Prima Facie Speed Limit along Hemphill Street between NE Alsbury Boulevard and McAlister Road from 35 miles per hour to 45 miles per hour; directing the City Manager or designee to erect the appropriate signage and incorporate the recitals into the body of the ordinance.



**DENY**

**QUESTIONS?**

