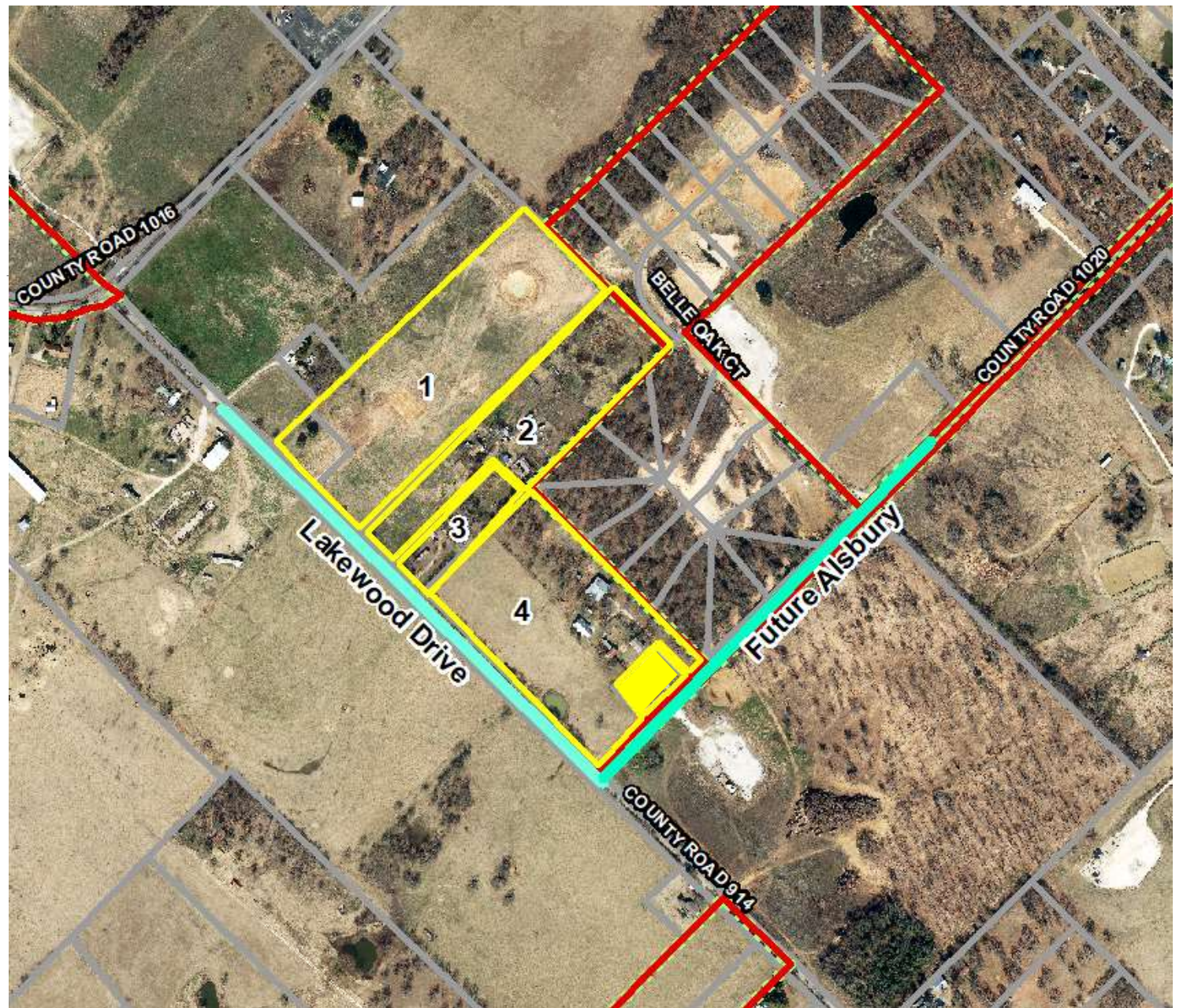




Burleson 4A Resolution

Lakewood ROW

- The Resolution will approve the acquisition and expenditure of funds to acquire the right of way needed from these four (4) parcels to be able to construct the new roadway for the Chisholm Summit and Hooper Business Park Development
- The right of way is located on CR 914 (Future Lakewood Drive) and a portion of CR 1020 (Future Alsbury).
- Staff recommends approval of the resolution.



Questions / Comments
