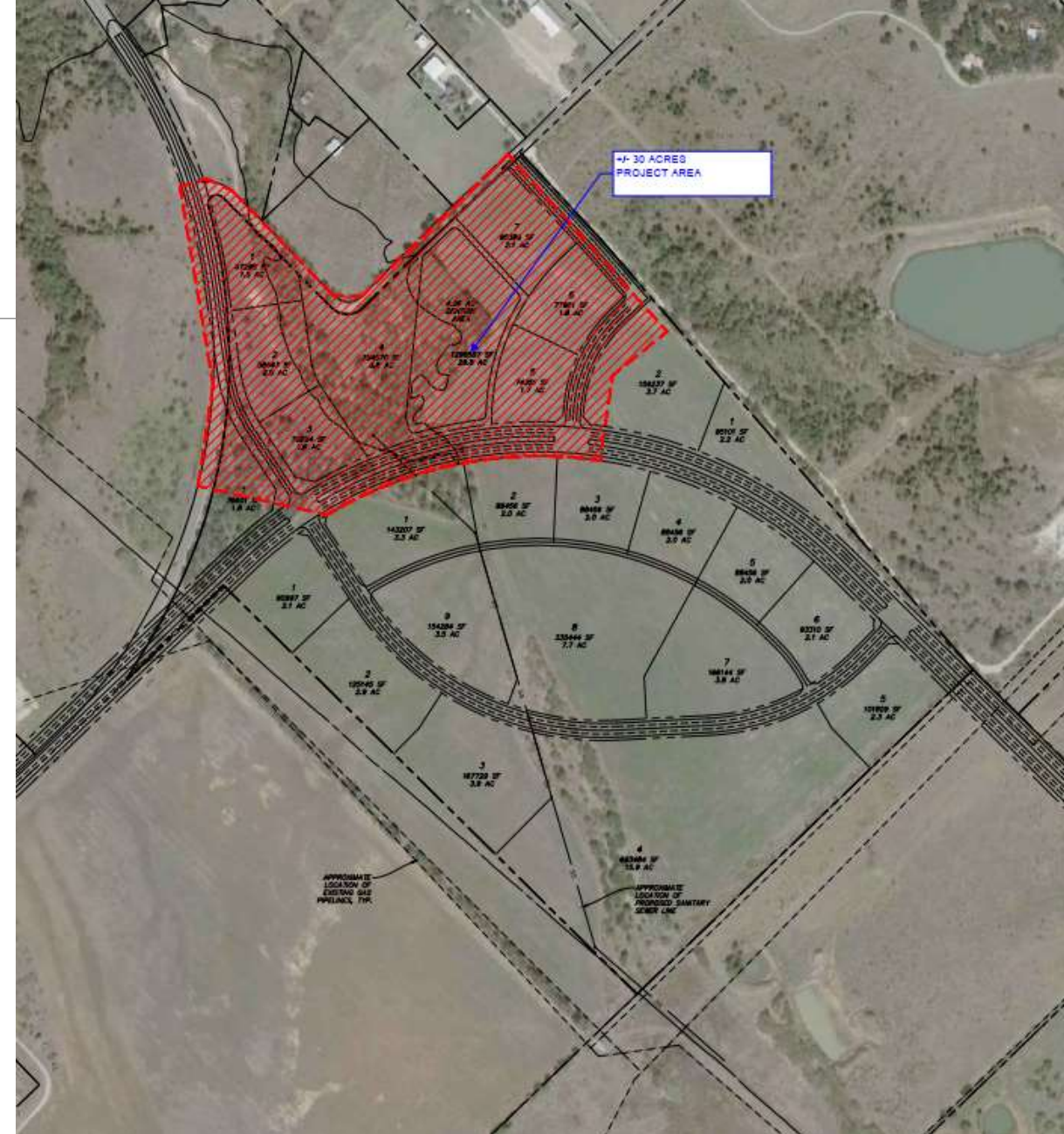




Economic Development

Hooper Business Park

- Approximately 106 acres
- Medical and Professional Office
- Regional Detention to allow max development of the property.
- 12-14 weeks to complete
- The area shaded in red is the proposed area for the regional detention pond due to the topography.



-
- MMA, Inc. is a technology-focused design firm providing reliable civil engineering, survey, landscape architecture, and planning services to clients across North Texas. The professional services agreement includes the following to be completed:

- Topographic Survey of the property
- Drainage Study
- Schematic Design
- Civil Construction Plans
- Storm Water Pollution Prevention Plan
- Construction Administration

After the completion of design staff will have the construction documents to go out for bid to have the regional detention pond to be constructed.

- Cost - \$105,000

Options

- Approve the professional services contract with MMA, Inc.
- Modify the professional services contract with MMA, Inc.
- Deny the professional services contract with MMA, Inc.

Staff Recommendation is to approve the professional services contract with MMA, Inc.

Questions / Comments
