

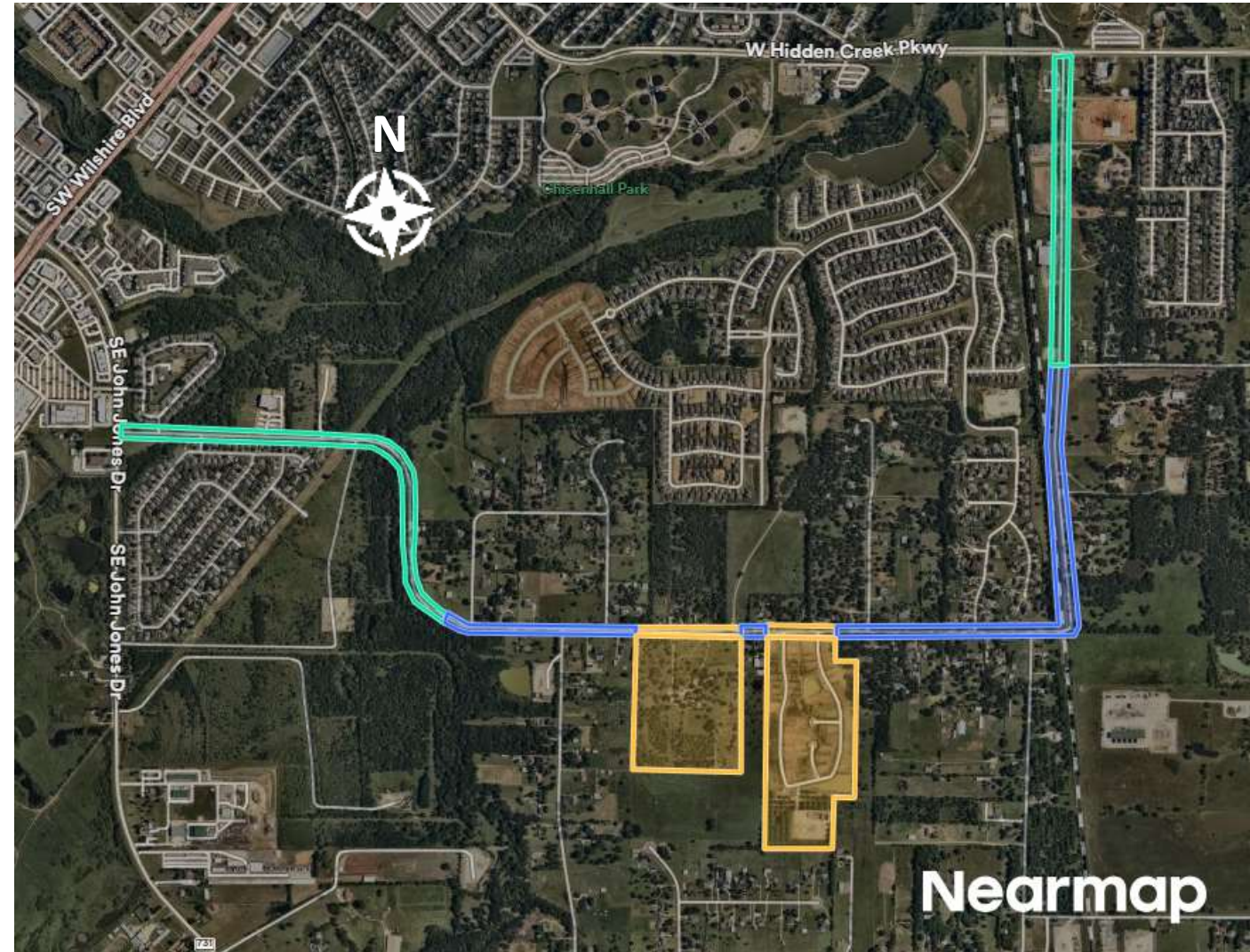
# **Speed Zone Ordinances**

## **County Road 714 and County Road 914**

**City Council**  
**July 21, 2025**

# Background: S. Dobson / CR 714

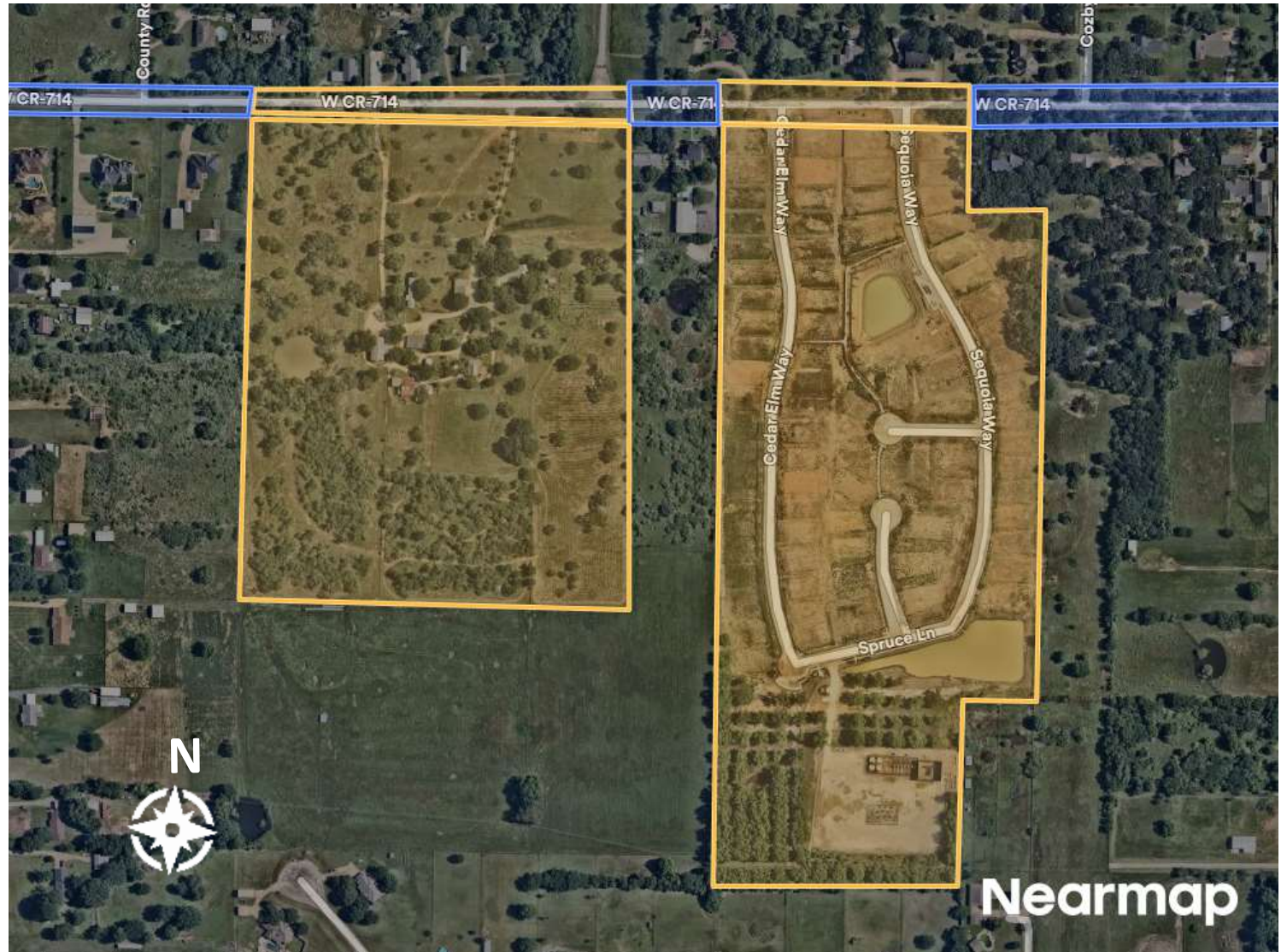
- CR 714 is mix of city- and county-maintained segments with posted speeds of 30mph and 40mph
- City and County staff are supportive of a consistent speed limit of 30mph for all of CR 714 from FM 731/John Jones Drive to Hidden Creek Parkway
- Johnson County Commissioners Court is considering an ordinance reducing their speed limit to 30mph this month



Green (Burleson – 30mph) Yellow (Burleson – 40mph) Blue (Johnson County – 40mph)

# Background: S. Dobson / CR 714

- Historic Russell Farm including CR 714 frontage was donated to the City of Burleson in October 2011
- Planned development Pecan Grove consists of 81 residential lots and was annexed into the city in November 2018
- CR 714 includes multiple significant horizontal and vertical curves with limited sight distance and the majority of the roadway is heavily patched



Yellow (Burleson – 40mph)

Blue (Johnson County – 40mph)

# Background: CR 914

- CR 914 between CR 1021 and CR 914A is currently signed with a 40mph regulatory speed limit
- Due to the narrow road width, significant truck traffic, and existing conditions along the roadway, staff recommends reducing the speed limit to 30mph until the roadway is improved



# Background: CR 914

- Signage has been installed to warn motorists of conditions along this segment of CR 914
- Staff is developing funding options for council consideration as a future capital improvement project
- That project may be initiated as soon as FY26 and may require minor land acquisition to address drainage needs and make roadway improvements
- There is also the potential need for an additional wastewater main that may get coordinated with any road improvements



# Chapter 545.356 of the Texas Transportation Code

Establishes prima facie or default speed limits for various circumstances and authorizes when and how cities can establish and revise default speed limits

**(b-1)** Except as provided by Subsection (b-3), the governing body of a municipality, for a highway or a part of a highway in the municipality that is not an officially designated or marked highway or road of the state highway system, may declare a lower speed limit of not less than 25 miles per hour, if the governing body determines that the prima facie speed limit on the highway is unreasonable or unsafe.

**(b-2)** Subsection (b-1) applies only to a two-lane, undivided highway or part of a highway.



Most requests for Council consideration of speed limit changes have been those resulting from engineering studies.

# Chapter 545.356 of the Texas Transportation Code

## Reporting Requirements

**(d)** The governing body of a municipality that declares a lower speed limit on a highway or part of a highway under Subsection (b-1) or (b-3), not later than February 1 of each year, shall publish on its Internet website and submit to the department a report that compares for each of the two previous calendar years:

- (1) the number of traffic citations issued by peace officers of the municipality and the alleged speed of the vehicles, for speed limit violations on the highway or part of the highway;
- (2) the number of warning citations issued by peace officers of the municipality on the highway or part of the highway; and
- (3) the number of vehicular collisions that resulted in injury or death and were attributable to speed limit violations on the highway or part of the highway.



Council is authorized to lower these speed limits. Since revising using the authority in Section (b-1), annual reporting to TxDOT and on the city's website are required.

# Council Actions Requested

1. Approve an ordinance establishing a 30mph speed limit along CR 714

This ordinance provides a consistent 30mph speed limit along city portions of CR 714 / S. Dobson between FM 731 and Hidden Creek Parkway. A corresponding action is pending Johnson County Commissioner's Court consideration to adopt a 30mph speed limit for county portions of CR 714 / S. Dobson between FM 731 and Hidden Creek Parkway.

2. Approve an ordinance establishing a 30mph speed limit along CR 914

This ordinance reduces the speed limit from 40mph to 30mph along CR 914 between CR 1021 and CR 914A based on road conditions, narrow pavement width, and heavy truck traffic.



# Questions/Discussion

Errick Thompson, PE, CFM<sup>®</sup>

Director of Public Works

[ethompson@burlesontx.com](mailto:ethompson@burlesontx.com)

817-426-9610