

City Council  
July 21, 2025

# Hooper Business Park Eminent Domain



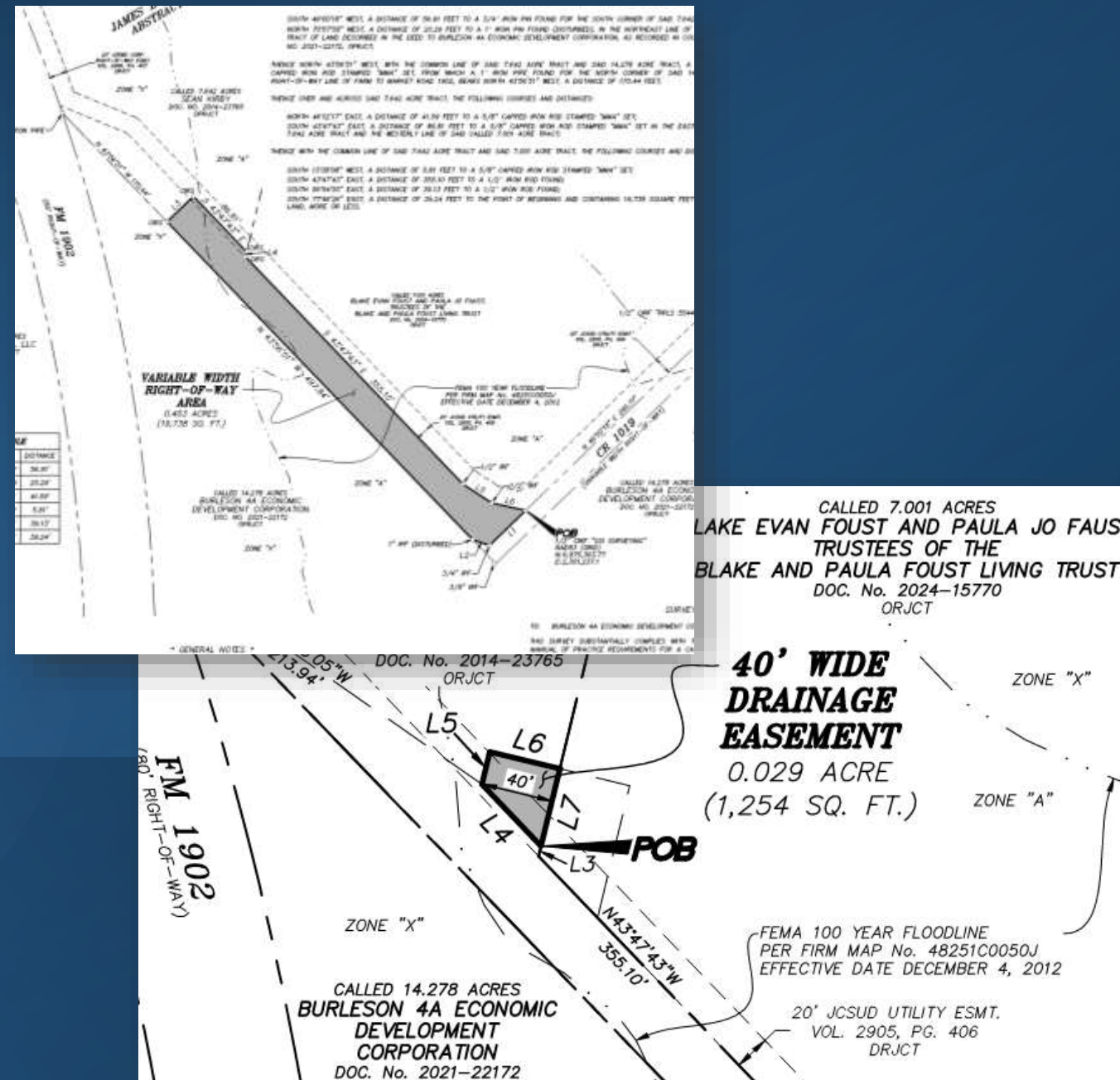


# Hooper Business Park Drainage

Existing portion of CR 1019 from curve to FM 1902 ROW is currently owned by one property owner

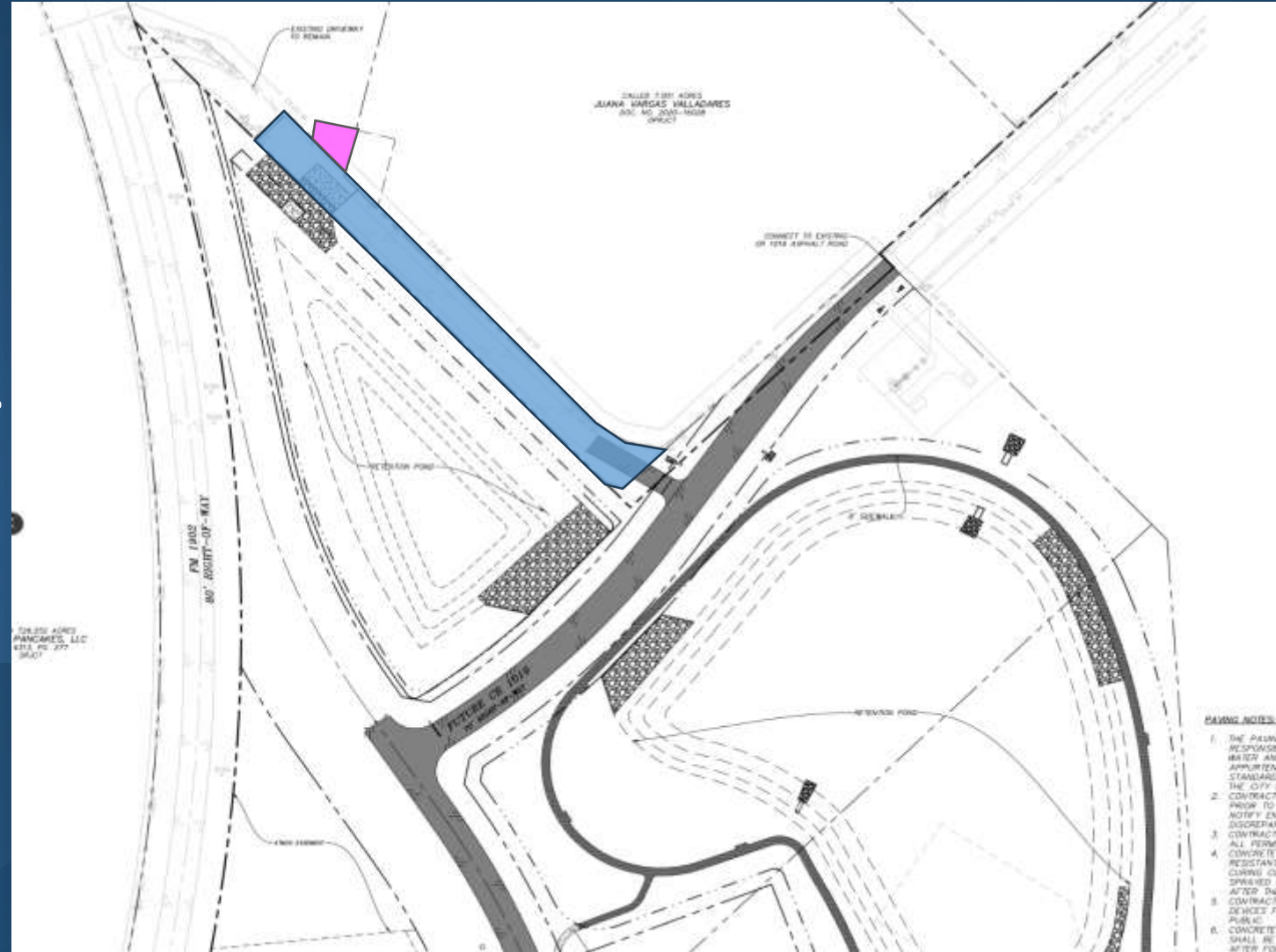
Proposed property acquisition

- Drainage easement near outfall for maintenance for north pond
- Existing CR 1019 as an ROW (access, drainage and utilities) for maintenance of north pond



# Hooper Business Park Drainage

Condemnation process will provide clear title to the property.



# Staff Recommendation

Authorize the use of eminent domain and approve the resolution.

# Questions

Michelle McCullough, P.E., CFM

Deputy Director/City Engineer

[mccullough@burlesontx.com](mailto:mccullough@burlesontx.com)

(817)426-9616