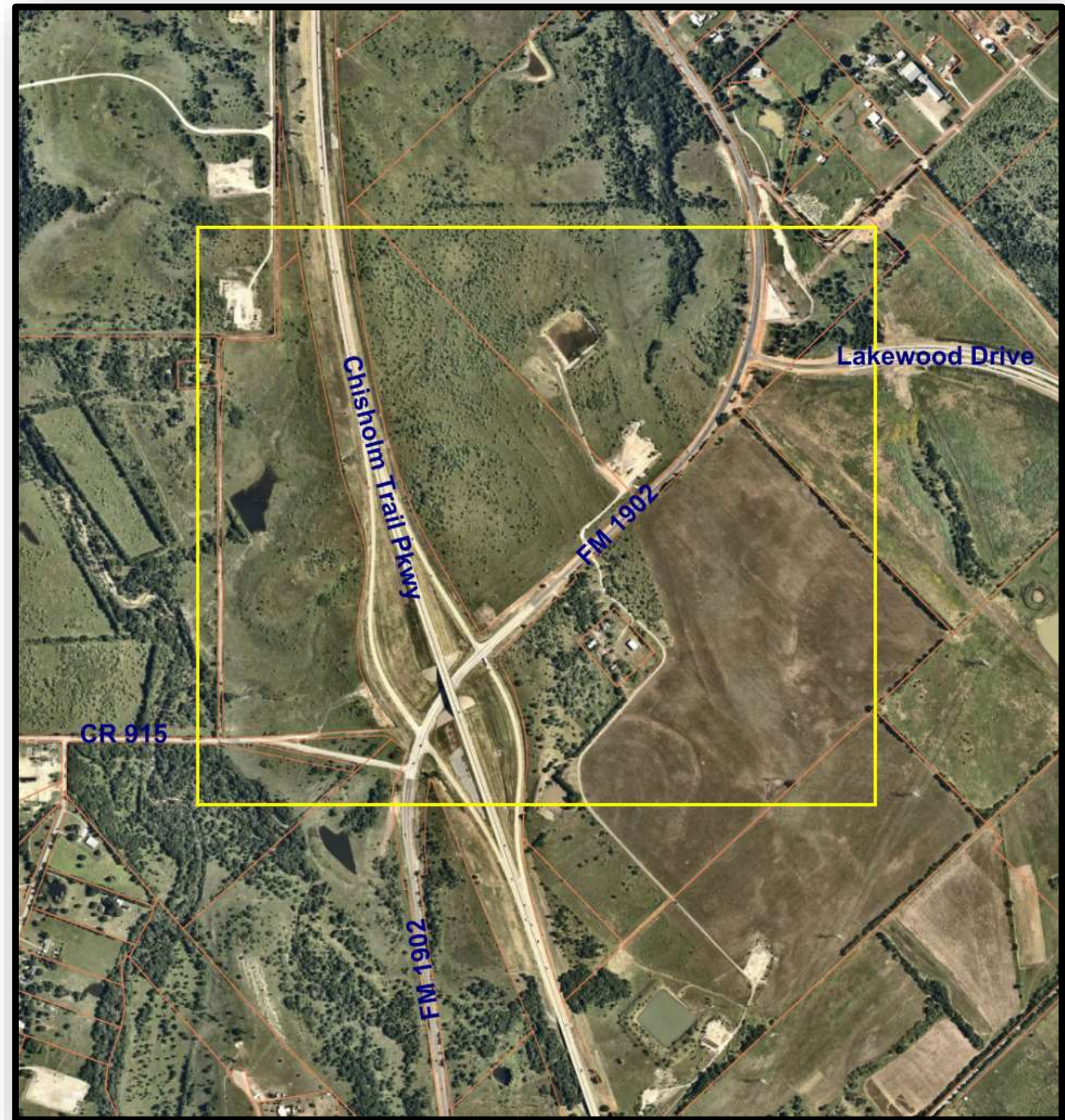


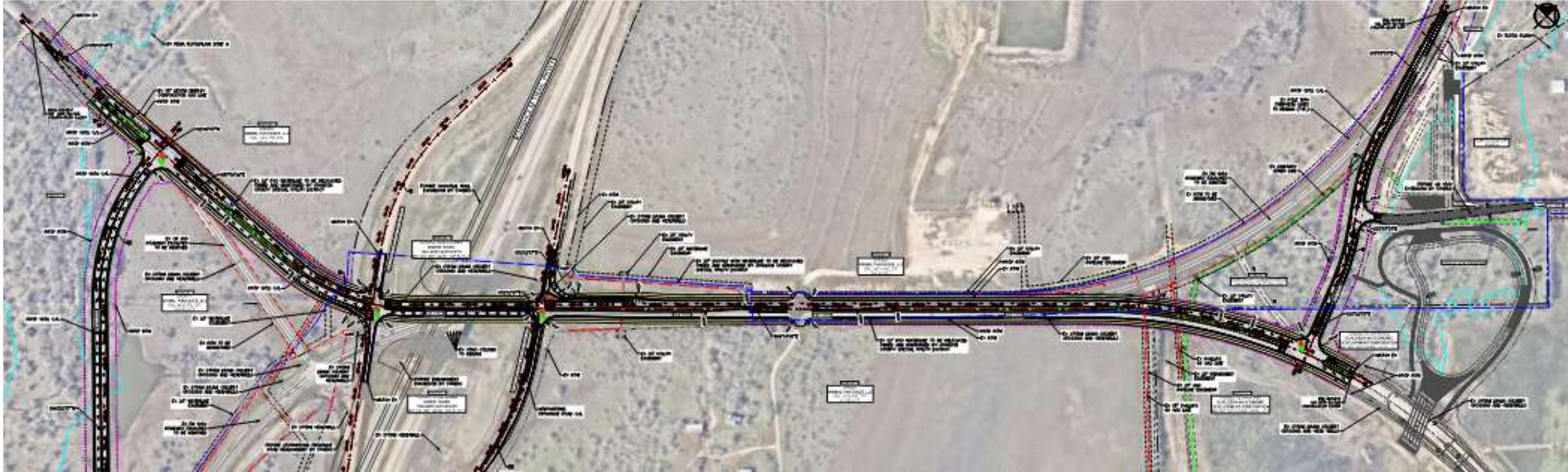
Advance Funding Agreement (AFA) of Lakewood Drive Extension Project

Review of a Traffic Engineering Study

City Council
July 21, 2025



Lakewood Drive Extension Project Overview



- Design Contract approved March 2024
- Amendment approved December 2024 to add west of Chisholm Trail Parkway schematic design
- Traffic engineering study
- Schematic design from CR 915 to realigned FM 1902 and Lakewood Drive intersection (30% schematic design currently under review by TxDOT)
- Full PS&E from Chisholm Trail Parkway to the realigned FM 1902 and Lakewood Drive intersection
- TxDOT responsible for full PS&E on west side of Chisholm Trail Parkway including future traffic signals at the Chisholm Trail Parkway and FM 1902 intersection
- City is currently working with COG and TxDOT for federal funding opportunities

Advanced Funding Agreement

- City to fund 100% of cost of traffic engineering study (included in design contract)
- City to fund any related cost overruns
- TxDOT will review and approve traffic engineering study

TxDOT's participation included indirect and direct costs related to the review of the traffic engineering study

Description	Total Estimated Cost	Federal Participation		State Participation		Local Participation	
		%	Cost	%	Cost	%	Cost
Engineering (by Local Government)	\$65,995	0%	\$0	0%	\$0	100%	\$65,995
Subtotal	\$65,995		\$0		\$0		\$65,995
Environmental Direct State Costs	\$1	0%	\$0	100%	\$1	0%	\$0
Right of Way Direct State Costs	\$1	0%	\$0	100%	\$1	0%	\$0
Engineering Direct State Costs	\$3,297	0%	\$0	100%	\$3,297	0%	\$0
Utility Direct State Costs	\$1	0%	\$0	100%	\$1	0%	\$0
Construction Direct State Costs	\$1	0%	\$0	100%	\$1	0%	\$0
Indirect State Costs	\$3,491	0%	\$0	100%	\$3,491	0%	\$0
TOTAL	\$72,787		\$0		\$6,792		\$65,995

Staff Recommendation

Approve a resolution authorizing an Advance Funding Agreement (AFA) with the TxDOT Department of Transportation (TxDOT) for the review of a traffic engineering study for the Lakewood Drive Extension Project

Questions / Comments

Michelle McCullough, P.E., CFM

Deputy Director of Development Services/City Engineer

mmccullough@burlesontx.com

(817) 426-9616