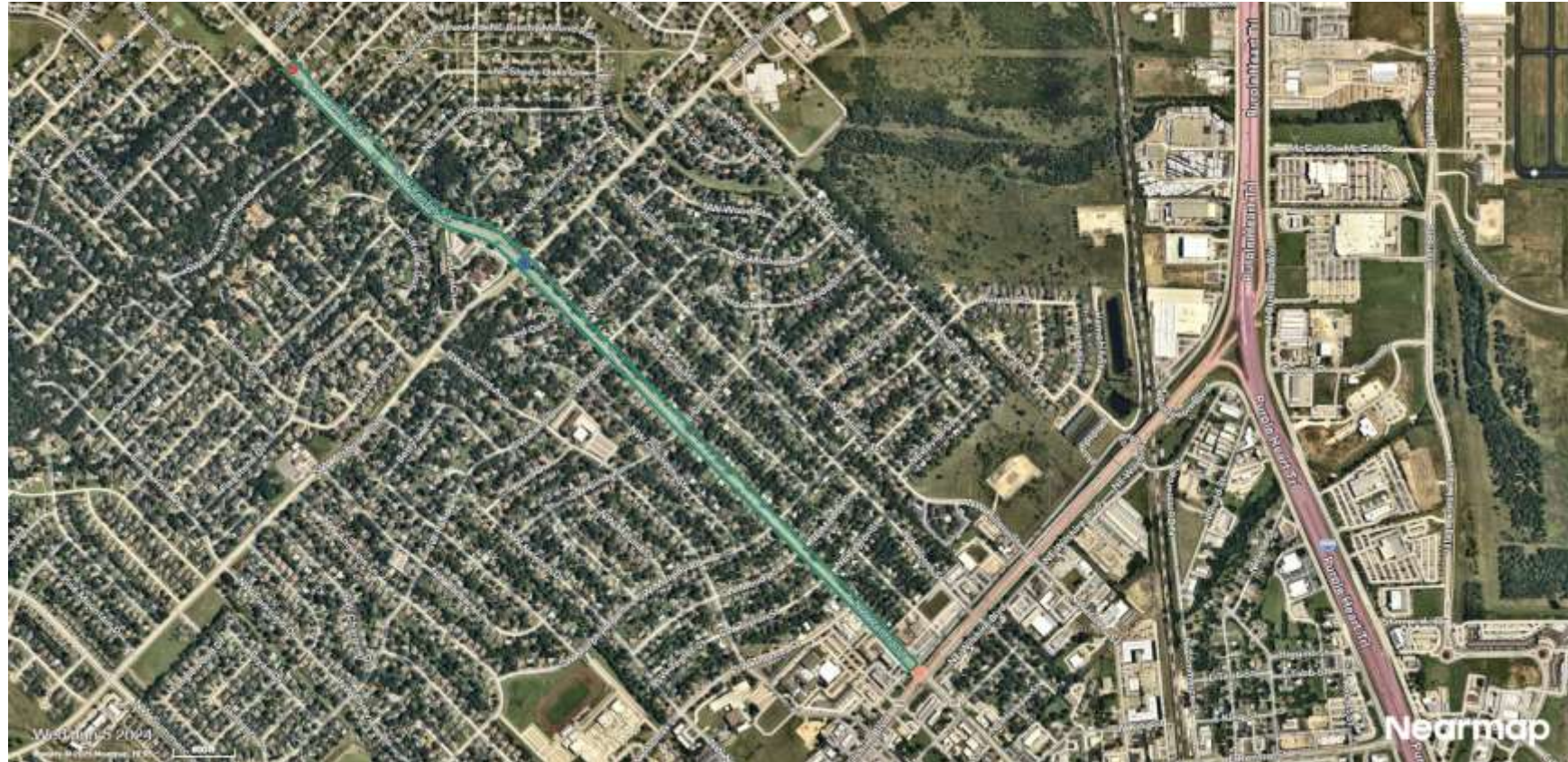


West Renfro Speed Limit Study – Policy 17



Overview

- Council Policy 17, Section II (b)(ii) states, “Notify the City Manager, in writing, of the request a least ten (10) business days before any regularly scheduled City Council meeting.”
- Councilmember Anderson requested that a traffic engineering consultant be engaged to assess the speed limit along West Renfro Street between SH 174 and SW Albury Blvd

Speed Study

- The city has a contract in place with Westwood Professional Services for studies of this nature
- The scope of work includes studying the speed limit of the referenced portion of West Renfro in accordance with current professional engineering standards including data collection, site visits for field observation, and a report
- Proposed fee: \$8,000
- Approval of this item would authorize the City Manager to authorize the study per Councilmember Anderson's request

Questions/Comments

Errick Thompson
Director of Public Works
Ethompson@burlesontx.com
817-426-9610