

Water Service Line Inventory Update

Infrastructure & Development Committee

Presentation Outline

- Background
- Compliance Activities
- Upcoming Requirements



Background: Burleson Water Quality

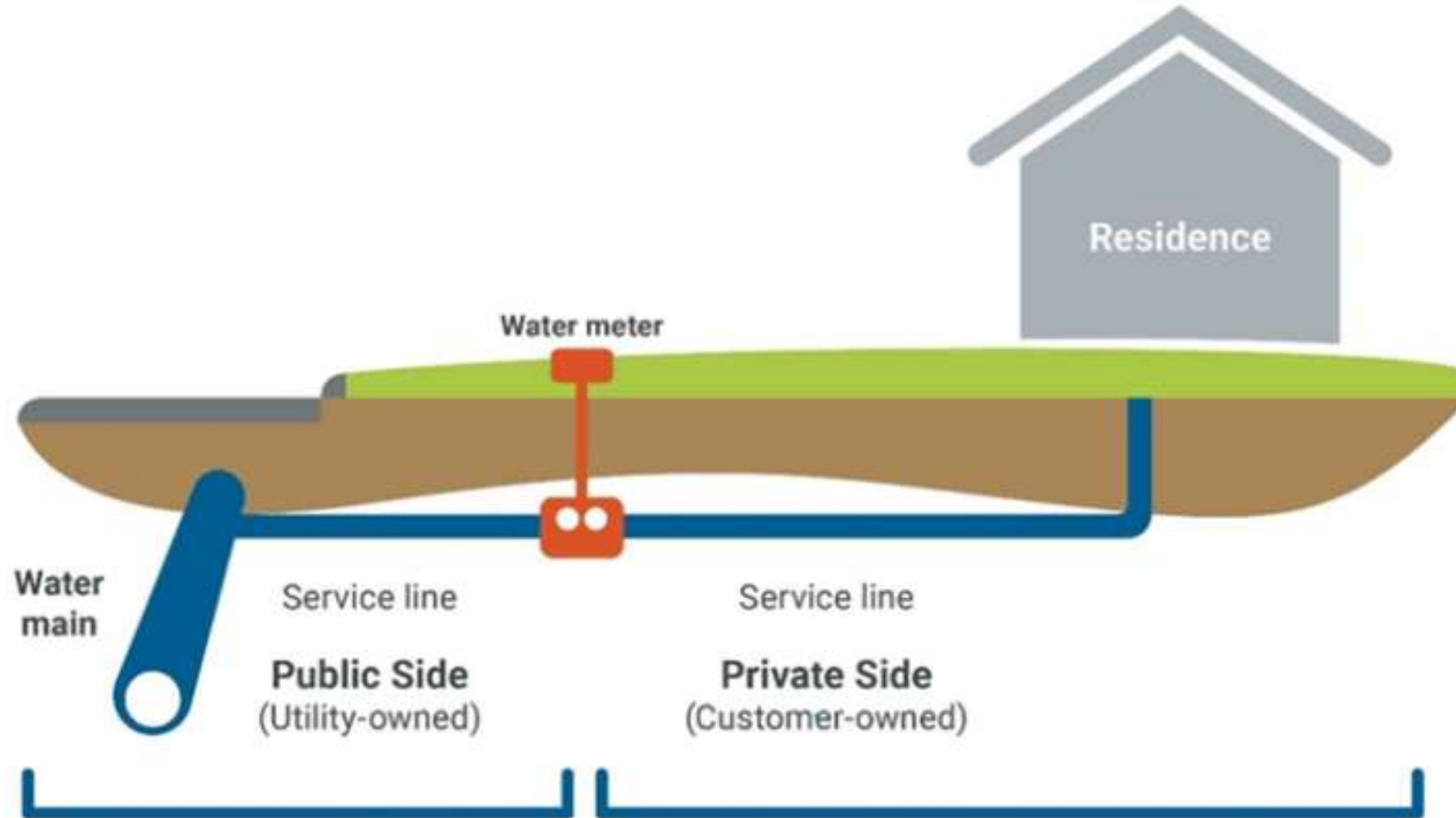


Burleson routinely samples and tests drinking water as required by EPA and TCEQ. Those test results are reflected in our Water Quality Report published annually.

Lead and Copper (Samples are taken every three years. The next round of sampling will take place in 2026)						
Year	Contaminant	The 90th Percentile	Number of Sites Exceeding Action Level	Action Level	Unit of Measure	Source of Contaminant
2023	Lead	0.0014	0	0.015	mg/L	Corrosion of household plumbing systems; erosion of natural deposits.
2023	Copper	0.4030	0	1.3	mg/L	Corrosion of household plumbing systems; erosion of natural deposits; leaching from wood preservatives.

*Excerpt from FY2023 Report, FY2024 report due in July 2025

Background: Water Service Lines



Background: Regulations



Evolving federal and state rules require public water systems to develop inventories of water service lines

EPA and the **Texas Commission on Environmental Quality** (TCEQ) have released updated standards to protect communities from the risks of lead and copper exposure found in drinking water.

Lead and Copper Rule Revisions (2021) and **Lead and Copper Rule Improvements** (2024) strengthen the protections that public water systems, such as the City of Burleson, need to meet when providing water to its customers.

EPA released guidance and notified public water systems to begin developing service line inventories in August 2022.

Compliance Activities by Staff to Date

- Staff developed inventory of all 15,543 service lines (city and private portions) August 2022 – early October 2024
- Staff submitted inventory to TCEQ by October 16, 2024 deadline



Compliance Activities: Initial Inventory

Rules require replacement

Part 2. Inventory Summary Table ¹		
When using the Detailed Inventory worksheet, the classifications in the Column "Entire Service Line Material Classification" (Column Q) will be used to calculate the total number of service lines for each of the four material classifications below. Remember this is the classification for the entire service line.		
Service Line Material Classification	Definition	Total Number of Service Lines (REQUIRED to be reported under the LCRR) ^x
Lead	Any portion of the service line is known to be made of lead. ²	5
Galvanized Requiring Replacement (GRR)	The service line is not made of lead, but a portion is galvanized and the system is unable to demonstrate that the galvanized line was never downstream of a lead service line.	219
Non-Lead	All portions of the service line are known NOT to be lead or GRR through an evidence-based record, method, or technique.	15,319
Lead Status Unknown	The service line material is not known to be lead or GRR. For the entire service line or a portion of it (in cases of split ownership), there is not enough evidence to support material classification.	0
TOTAL		15,543

Notes

¹ This summary table is for reporting material for the entire service line connecting the water main to the customer's plumbing. See the **Classifying SLs** worksheet for additional guidance on assigning a materials classification to the entire service line when ownership is split. Remember that systems must track the system-owned and customer-owned portions separately in their inventory.

² A lead-lined galvanized service line is consistent with the definition of an LSL under the LCRR ("a portion of pipe that is made of lead, which connects the water main to the building inlet") (40 CFR §141.2) and must therefore be classified in the inventory as an LSL. Do not, however, count non-lead service lines with a lead gooseneck or pigtail as lead service lines.

Compliance Activities by Staff to Date

- Mailed notifications (based on EPA templates) November 15, 2024 to 224 properties identified as having either lead or galvanized service lines
- Published interactive map online November 15, 2024 (not required, but as an additional means of communicating to the public)



Notice of Confirmed Galvanized Service Line (that is or was possibly downstream of a lead service line)

Notice of Confirmed Galvanized Service Line (that is or was possibly downstream of a lead service line)

Public Water System Name:	City of Burleson	PWS ID No.:	TX1240002
Service Line Location:		Date:	November 15, 2024

Dear Drinking Water Consumer,

The Burleson public water system is focused on protecting the health of every household in our community. This notice contains important information about your drinking water. Please share this information with anyone who drinks and/or cooks using water at this property. In addition to the people directly served at this property, this could and should include people in apartments, nursing homes, schools, businesses, as well as parents served by childcare at this property.

It has been determined that either a portion of, or the entire water pipe (called a service line) that connects your home, building, or other structure to the city's water main is made from **galvanized material** that may have adsorbed lead. EPA has defined these service lines as "galvanized requiring replacement"¹. Our records either indicate that a lead service line pipe may be present or might have been present in the past.

Galvanized service lines that have adsorbed lead can contribute to lead in drinking water. People living in homes with a galvanized service line that has adsorbed lead may have an increased risk of exposure to lead from their drinking water.

This determination was made through a combination of field inspections and document review by staff as part of the EPA-required service line inventory completed for the entire water system. You can view the results for your property using the interactive water service line map now available on the city's website at <https://www.burlesontx.com/800/Maps>. By entering your address and then clicking on the icon shown on your property, you will see the current data in the inventory. This will be a living document that is updated as new information is developed.

If you have questions concerning any of the information provided in this notice, or if you have information that could help us better describe your service line, contact us via the city's 311 system by submitting a **General service request** (<https://burlesontx.my.site.com/notifications/>) and referencing "Water Service Line Notice" in your request.

Health Effects of Lead

Exposure to lead in drinking water can cause serious health effects in all age groups. Infants and children can have decreases in IQ and attention span. Lead exposure can lead to new learning and behavior problems or worsen existing learning and behavior problems. The children of women who are exposed to lead before or during pregnancy can have increased risk of these negative health effects. Adults can have increased risks of heart disease, high blood pressure, and kidney, or nervous system problems.

Steps you can take to reduce lead in drinking water.

Below are recommended actions that you may take, separately or in combination, if you are concerned about lead in your drinking water. The list also includes where you may find more information and is not intended to be a complete list or to imply that all actions equally reduce lead in drinking water.

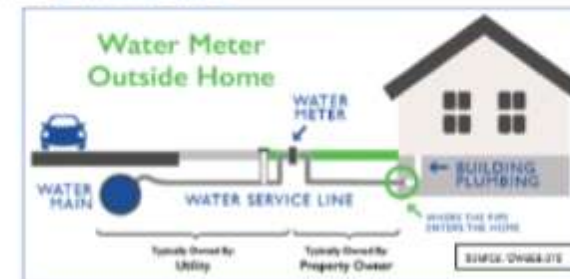
¹ Refers to a galvanized service line that is or was at any time downstream of a lead service line or is currently downstream of a "Lead Status Unknown" service line.

- **Use your filter properly.** Using a filter can reduce lead in drinking water. If you use a filter, it should be certified to remove lead. Read any directions provided with the filter to learn how to properly install, maintain, and use your cartridge and when to replace it. Using the cartridge after it has expired can make it less effective at removing lead. Do not run hot water through the filter. For more information on facts and advice on home water filtration systems, visit EPA's website at <https://www.epa.gov/water-research/consumer-task-identifying-point-use-and-pitcher-filters-certified-reduce-lead>.
- **Clean your aerator.** Regularly remove and clean your faucet's screen (also known as an aerator). Sediment, debris, and lead particles can collect in your aerator. If lead particles are caught in the aerator, lead can get into your water.
- **Use cold water.** Do not use hot water from the tap for drinking, cooking, or making baby formula as lead dissolves more easily into hot water. Boiling water does not remove lead from water.
- **Learn about construction in your neighborhood.** Construction may cause more lead to be released from a lead service line or galvanized service line if present. Contact us to find out about any construction or maintenance work that may disturb your service line.
- **Have your water tested.** You may contact a certified laboratory to have your water tested for lead. A list of certified laboratories is available at <https://www.texas.gov/divisions/drinking-water/quality-issues/where-to-get-water-tests.pdf>. Note, a water sample may not adequately capture or represent all sources of lead that may be present. For information on sources of lead that include service lines and interior plumbing, please visit <https://www.epa.gov/ground-water-and-drinking-water/lead-information-about-lead-in-trinking-water/fact-sheet>.
- **Get your child tested to determine lead levels in their blood.** A family doctor or pediatrician can perform a blood test for lead and provide information about the health effects of lead. State, city, or county departments of health can also provide information about how you can have your child's blood tested for lead. The Centers for Disease Control and Prevention recommends public health actions when the level of lead in a child's blood is 3.5 micrograms per deciliter (µg/dL) or more. For more information and links to CDC's website, please visit <https://www.epa.gov/ground-water-and-drinking-water/basic-information-about-lead-in-trinking-water>.

Replacing galvanized requiring replacement service lines

Our water system does not currently have a program in place to replace private service lines. If you plan to replace the portion of the service line that you own, please notify us via the 311 system by submitting a **General service request** (<https://burlesontx.my.site.com/notifications/>) and referencing "Water Service Line Notice" in your request, as this is very important input into our periodic updates of our system-wide inventory.

For more information on reducing lead exposure from your drinking water and the health effects of lead, visit EPA's website at <http://www.epa.gov/lead>.



Notice of Confirmed Lead Service Line

Notice of Confirmed Lead Service Line

Public Water System Name:	City of Burleson	PWS ID No.:	TX1260002
Service Line Location:		Date:	November 15, 2024

Dear Drinking Water Consumer,

The Burleson public water system is focused on protecting the health of every household in our community. This notice contains important information about your drinking water. Please share this information with anyone who drinks and/or cooks using water at this property. In addition to the people directly served at this property, this could and should include people in apartments, nursing homes, schools, businesses, as well as parents served by childcare at this property.

It has been determined that either a portion of, or the entire water pipe (called a service line) that connects your home, building, or other structure to the city's water main is made from **lead**. People living in homes with a lead service line may have an increased risk of exposure to lead from their drinking water.

This determination was made through a combination of field inspections and document review by staff as part of the EPA-required service line inventory completed for the entire water system. You can view the results for your property using the interactive water service line map now available on the city's website at <https://www.burlesontx.com/600/hous>. By entering your address and then clicking on the icon shown on your property, you will see the current data in the inventory. This will be a living document that is updated as new information is developed.

If you have questions concerning any of the information provided in this notice, or if you have information that could help us better describe your service line, contact us via the city's 311 system by submitting a **General service request** (<https://burlesontx.my.scs.com/submit/>) and referencing "Water Service Line Notice" in your request.

Health Effects of Lead
Exposure to lead in drinking water can cause serious health effects in all age groups. Infants and children can have decreases in IQ and attention span. Lead exposure can lead to new learning and behavior problems or worsen existing learning and behavior problems. The children of women who are exposed to lead before or during pregnancy can have increased risk of these negative health effects. Adults can have increased risks of heart disease, high blood pressure, and kidney, or nervous system problems.

Steps you can take to reduce lead in drinking water.
Below are recommended actions that you may take, separately or in combination, if you are concerned about lead in your drinking water. The list also includes where you may find more information and is not intended to be a complete list or to imply that all actions equally reduce lead in drinking water.

- Use your filter properly.** Using a filter can reduce lead in drinking water. If you use a filter, it should be certified to remove lead. Read any directions provided with the filter to learn how to properly install, maintain, and use your cartridge and when to replace it. Using the cartridge after it has expired can make it less effective at removing lead. Do not run hot water through the filter. For more information on facts and advice on home water filtration systems, visit EPA's website at <https://www.epa.gov/air-research/consumer-tip-identifying-pureit-use-and-pitcher-filters-certified-reduce-lead>

Page 1 of 2

- Close your aerator.** Regularly remove and clean your faucet's screen (also known as an aerator). Sediment, debris, and lead particles can collect in your aerator. If lead particles are caught in the aerator, lead can get into your water.
- Use cold water.** Do not use hot water from the tap for drinking, cooking, or making baby formula as lead dissolves more easily into hot water. Boiling water does not remove lead from water.
- Learn about construction in your neighborhood.** Construction may cause more lead to be released from a lead service line or galvanized service line if present. Contact us to find out about any construction or maintenance work that may disturb your service line.
- Have your water tested.** You may contact a certified laboratory to have your water tested for lead. A list of certified laboratories is available at <https://www.epa.gov/ground-water-and-drinking-water/lead-testing-laboratories>. Note, a water sample may not adequately capture or represent all sources of lead that may be present. For information on sources of lead that include service lines and interior plumbing, please visit <https://www.epa.gov/ground-water-and-drinking-water/basic-information-about-lead-drinking-water#sources>.
- Get your child tested to determine lead levels in their blood.** A family doctor or pediatrician can perform a blood test for lead and provide information about the health effects of lead. State, city, or county departments of health can also provide information about how you can have your child's blood tested for lead. The Centers for Disease Control and Prevention recommends public health actions when the level of lead in a child's blood is 3.5 micrograms per deciliter (µg/dL) or more. For more information and links to CDC's website, please visit <https://www.epa.gov/ground-water-and-drinking-water/basic-information-about-lead-drinking-water>.

Replacing lead service lines
Our water system does not currently have a program in place to replace private service lines. If you plan to replace the portion of the service line that you own, please notify us via the 311 system by submitting a **General service request** (<https://burlesontx.my.scs.com/submit/>) and referencing "Water Service Line Notice" in your request, as this is very important input into our periodic updates of our system-wide inventory.

For more information on reducing lead exposure from your drinking water and the health effects of lead, visit EPA's website at <http://www.epa.gov/lead>.

Page 2 of 2

Lead in Notice

11.15.2024

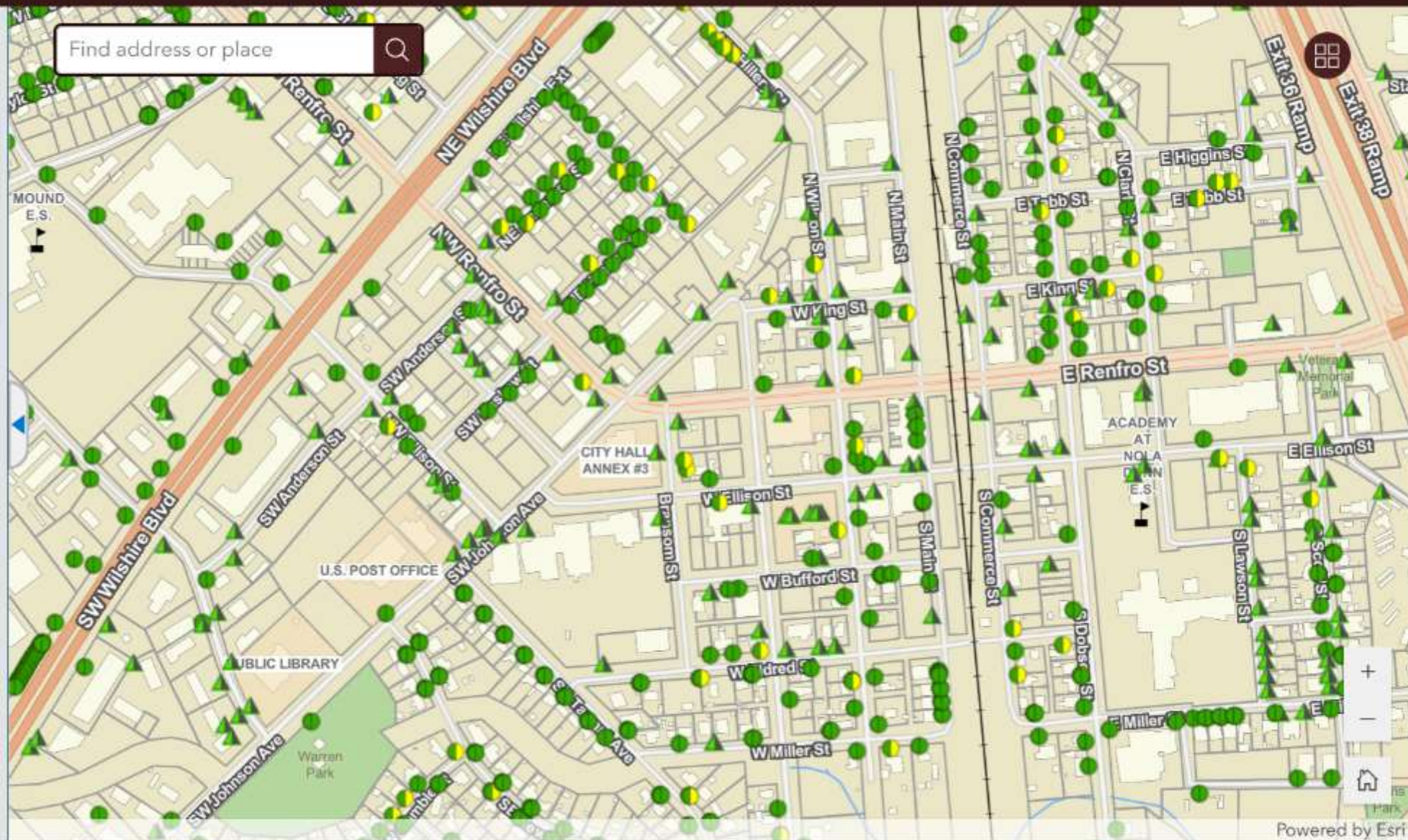
Map Legend

Water Service

City Side | Customer Side

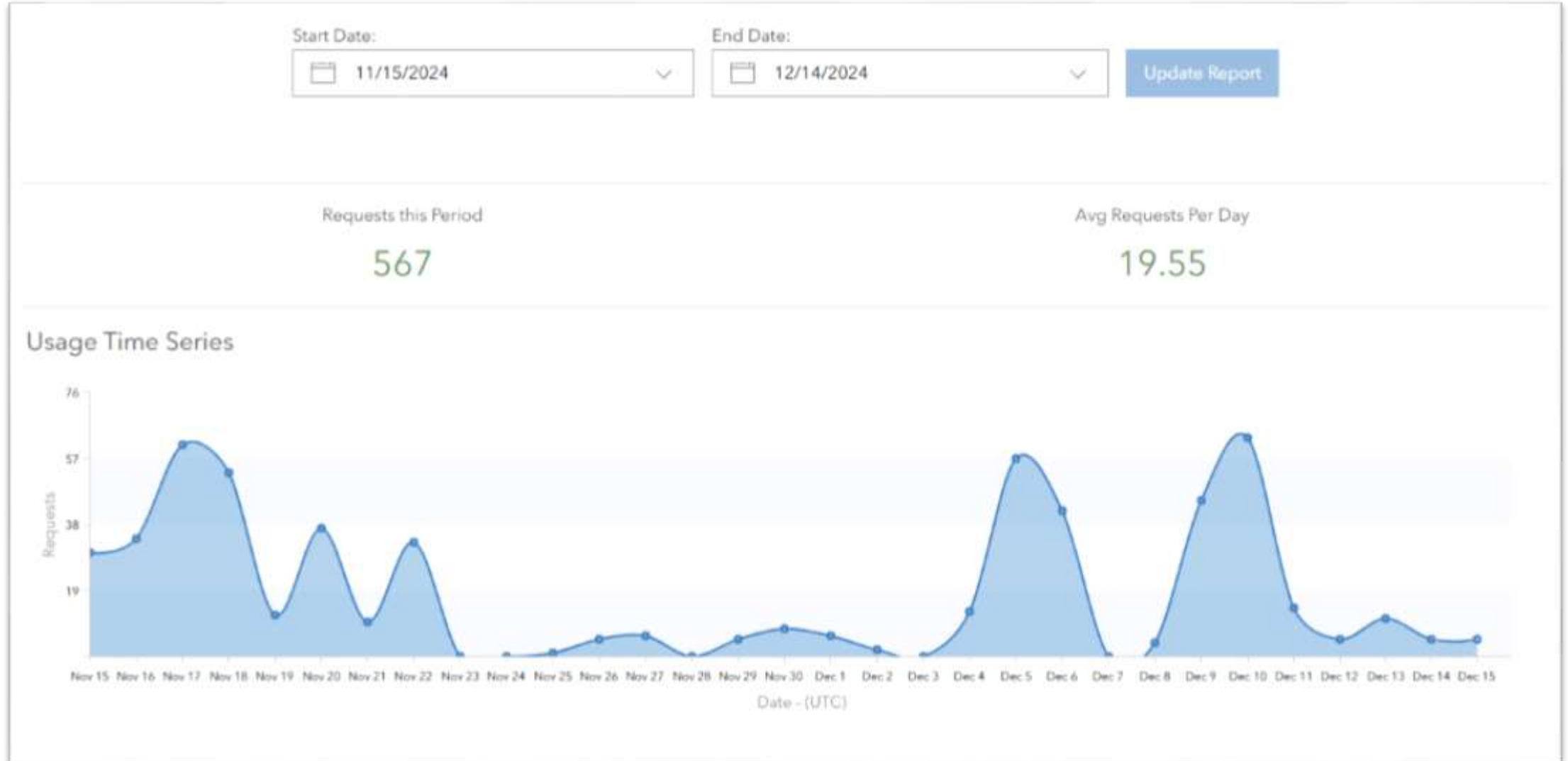
-  Non-Lead | Unknown - Unknown Material
-  Galvanized | Galvanized
-  Galvanized | Non-Lead
-  Non-Lead | Galvanized
-  Non-Lead | Lead
-  Non-Lead | Lead-lined Galvanized
-  Non-Lead | Non-Lead

Available on the City webpage at
<https://www.burlesontx.com/600/Maps>



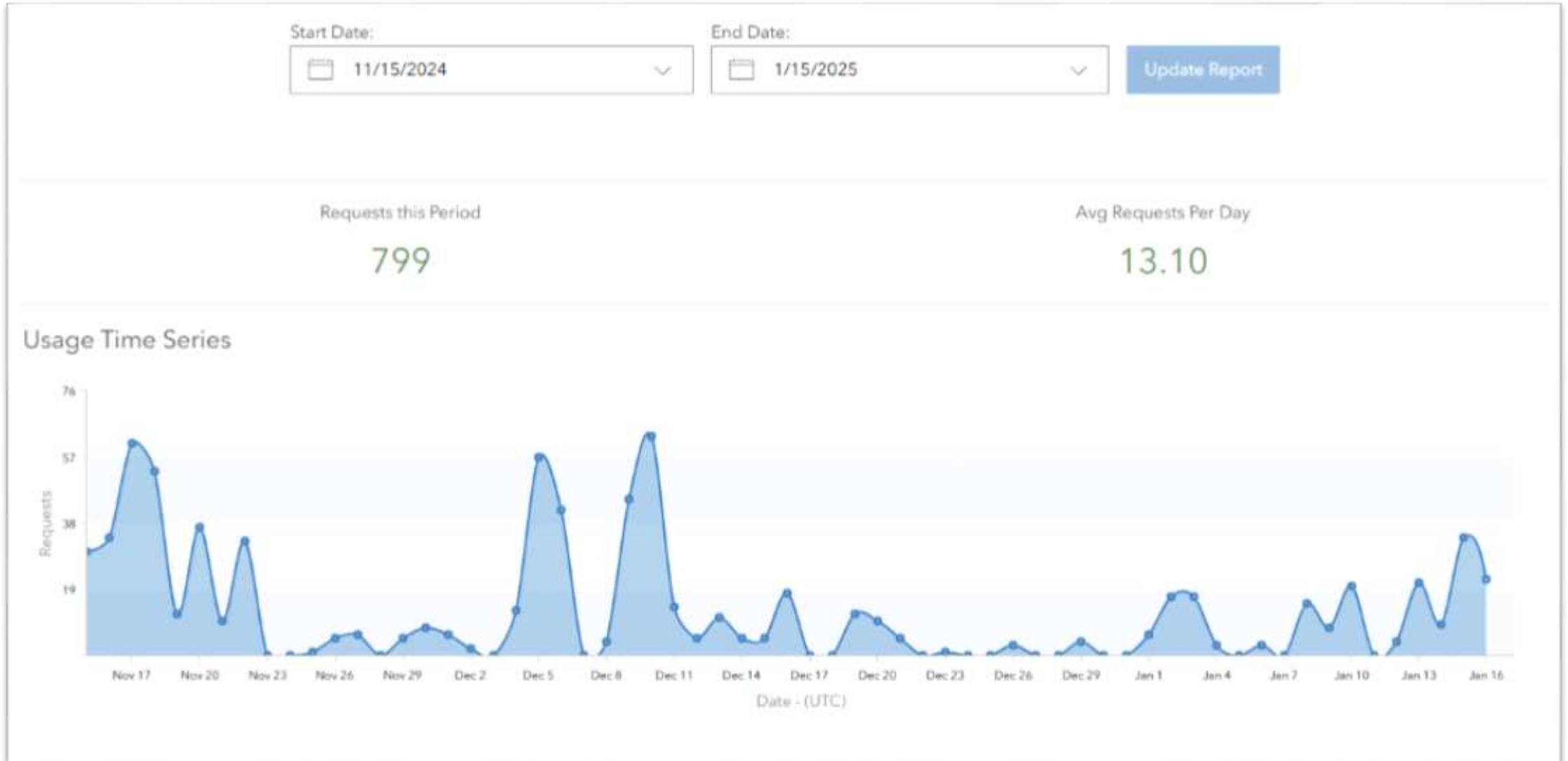
Water Service Line Interactive Map

1st month of usage:



Water Service Line Interactive Map

2nd and 3rd months usage:



Upcoming Requirements



Near term:

- Annual updates of inventory submitted to TCEQ
- Sampling program for certain schools and licensed childcare facilities*
- Service Line Replacement Plan developed by November 1, 2027

Longer-term: 10-year period to replace 224 service lines (by December 31, 2034, and EPA **suggests** replacement of an average of 10% per year)

The Texas Water Development Board offers limited funding programs to assist with replacing service lines. These are typically focused on disadvantaged communities defined as having Annual Median Household Income (AMHI) that is no more than 75% of the State's AMHI

*Lead and Copper Rule Improvements (LCRI) and schools / licensed childcare facilities:

The public water systems must sample 20% of elementary schools and 20% of licensed child-care facilities in their service areas annually for five years. Sampling to begin in November 1, 2027.

- EPA LCRI Fact Sheet October 2024

Service Line Replacement Cost Estimates

Estimated Cost to Property Owner: \$1,600 to \$2,200

Estimates based on the following assumptions:

- Distance: 30-60 ft between property and meter
- Depth: 18"-24"
- Difficulty or obstacles: Trees, rock, driveway, and irrigation
- Grounding rod and lead (\$400 to \$600)
- Polyethylene high density Pipe (PEX-HDPE)

Summary

- **Actions to date**
 - Inventoried **15,543** water service lines, submitted to TCEQ Oct 16, 2024
 - Provided web-based interactive map of service lines
 - Issued notifications to property owners impacted
- **Upcoming requirements**
 - Finalize a service line replacement plan by Nov 1, 2027
 - Communication protocols for public education
 - Replace lead and galvanized service lines to meet ten-year mandate by 2034*
 - Public Accessibility of inventory data is required, with updates posted annually starting Jan 30, 2029



Note: the 10-year replacement goal was established by the previous presidential administration and it is not yet clear how the new administration may revise that goal.

*Reminder: None of the 224 service lines requiring replacement are public service lines.

Topics for Consideration / Discussion / Feedback



Should the City . . .

- Consider implementing programs to assist private property owners offset the cost of replacing their lead or galvanized service lines?
 - If so, should those programs be limited (seniors, disabled, disadvantaged, other)?
 - If so, should we explore implementing a rebate program (property owner hires a plumber to replace the service line and provides documentation to receive the rebate)?
- Consider implementing sustained public education and outreach campaigns to encourage private property owners to address the health risk associated with lead and galvanized service lines?

Questions/Comments

Daryl Uptmore
Deputy Director of Public Works
duptmore@burlesontx.com
817-426-9835

Definitions & Acronyms

- Lead and Copper Rule Improvements (LCRI)
- Lead and Copper Rule Revisions (LCRR)
- Lead Service Line (LSL)
- Galvanized requiring replacement (GRR)
- Service Line: Pipe that connects the water main to the property
- Lead Service Line Replacement-Funding (LSLR-funding)
- Environmental Protection Agency (EPA)
- Texas Commission on Environmental Quality (TCEQ)