



# ZC Case 25-189

---

PRESENTED TO THE PLANNING AND ZONING COMMISSION – 8.12.25

EMILIO SANCHEZ, DEVELOPMENT SERVICES DEPUTY DIRECTOR

# ZC – 880 W CR 714

## Location:

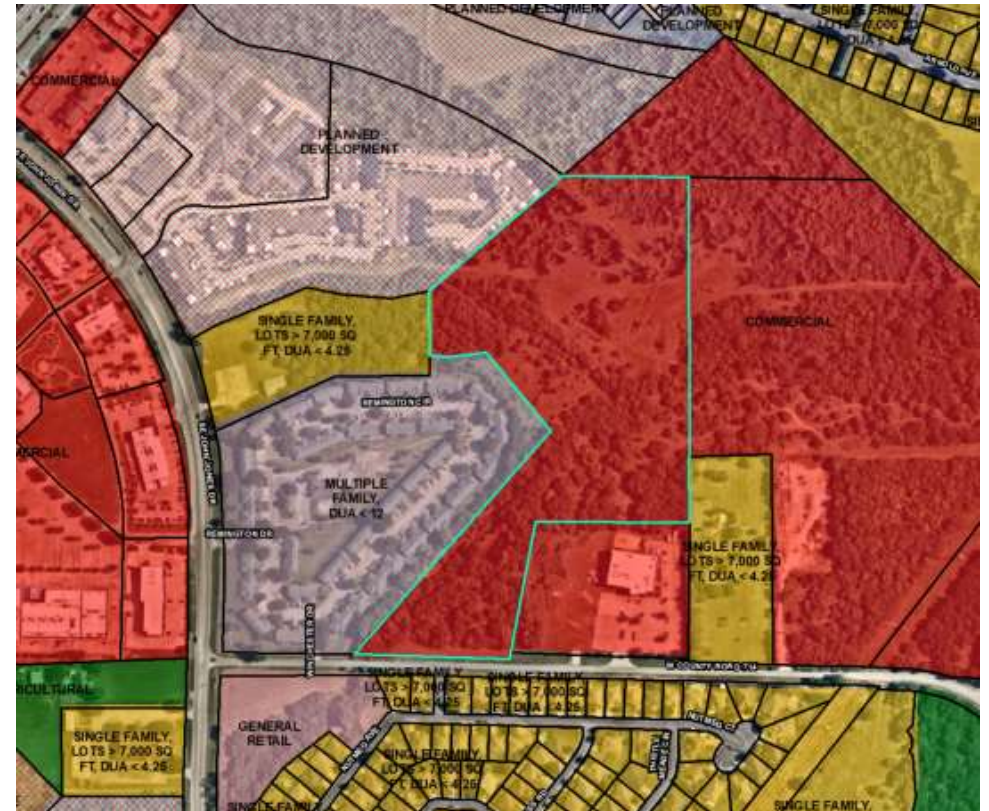
- 880 W CR 714

## Applicant:

- Jonathan Hill (Applicant)
- Grace Temple Church of Fort Worth (Owners)

## Item for approval:

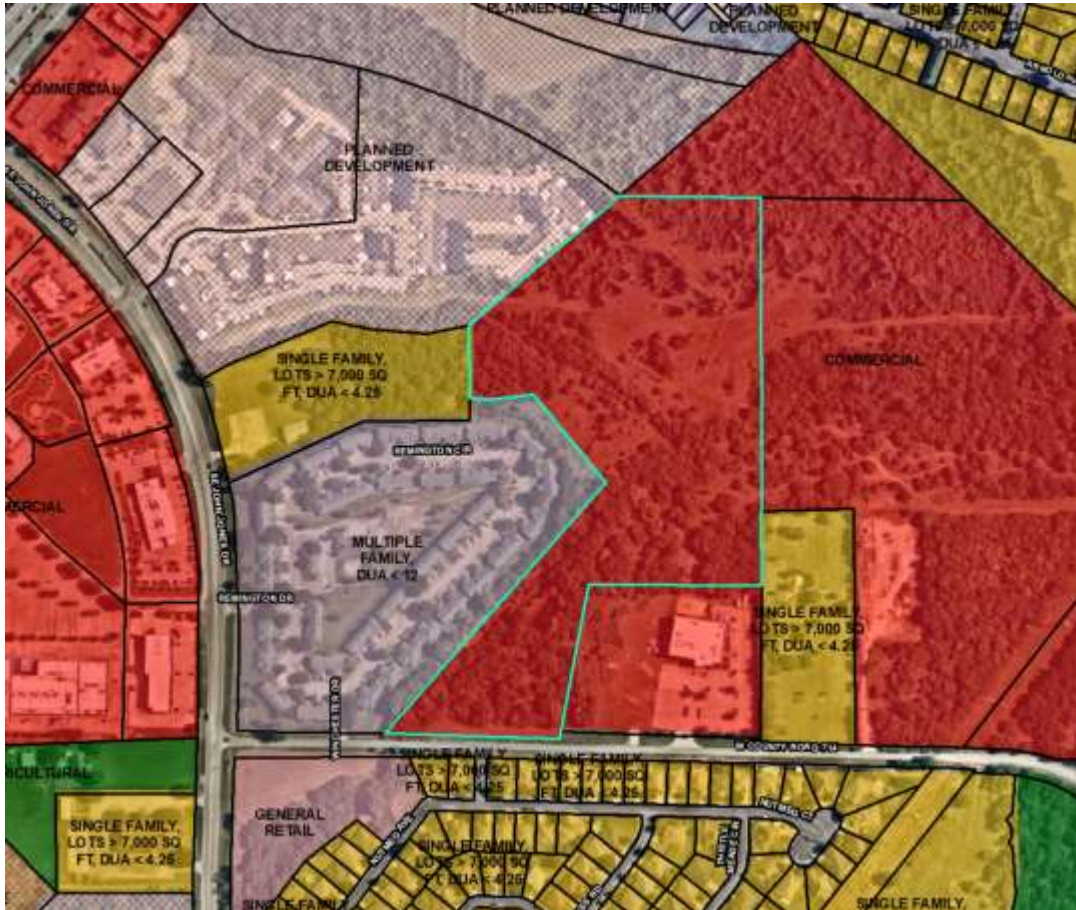
Zoning change from “C” Commercial to “SFE” Single-family estate district for a residential development (Case 25-189)





## Zoning

### C, Commercial



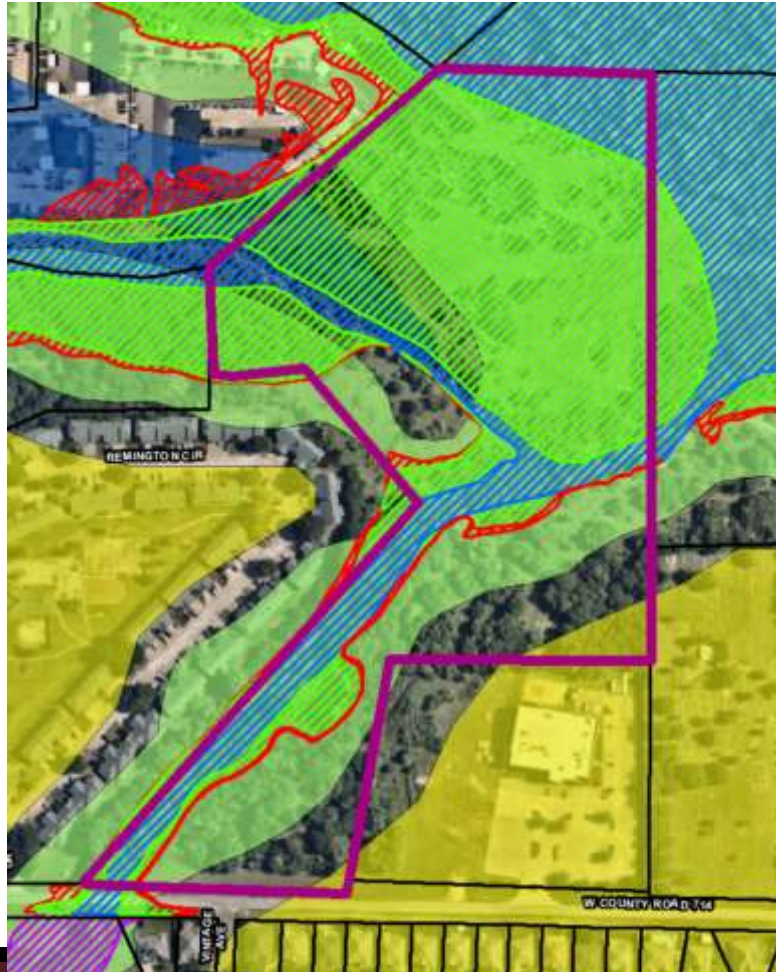
## Comprehensive Plan

### Flood Plain/Open Space





# ZC – 880 W CR 714



CONCEPTUAL SITE PLAN



# ZC – 880 W CR 714

## Public Hearing Notice:

- Public notices were mailed to property owners (based on current JCAD records) within 300 feet of subject property.
- Published in the newspaper.
- Sign Posted on the property.
- At this time staff has received no formal opposition



### Legend

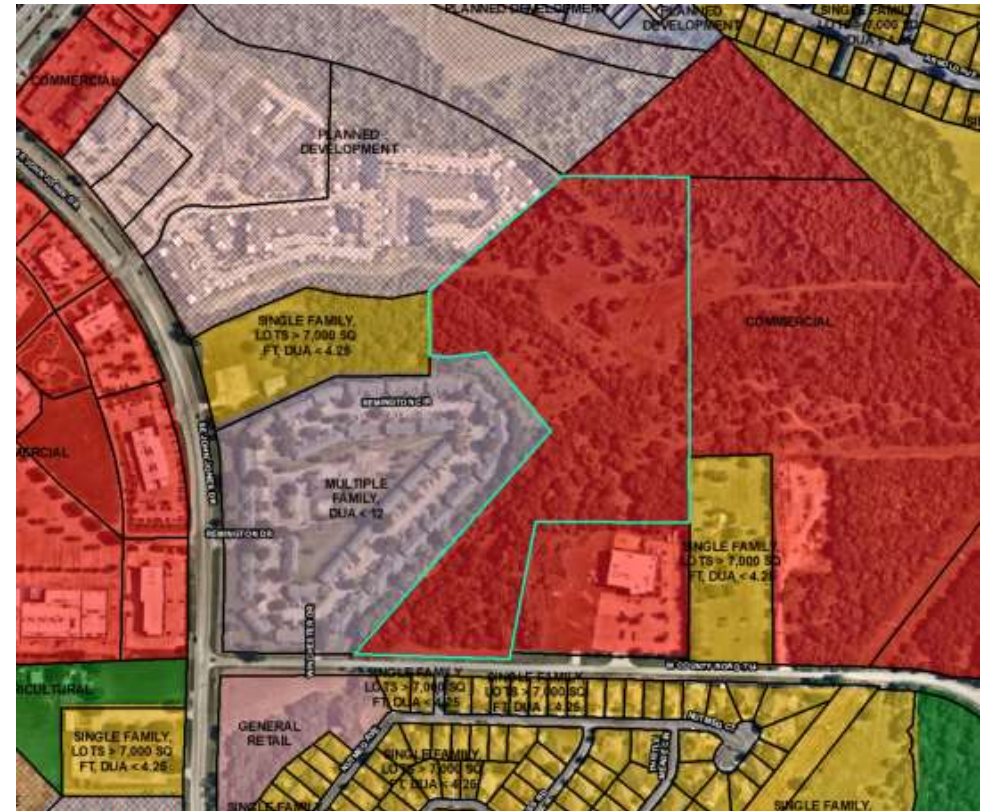
- 300 ft. Buffer
- Subject Property
- Properties within 300 ft
- Burleson



# ZC – 880 W CR 714

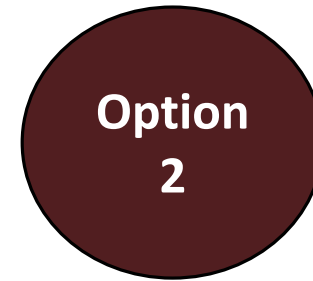
## Staff Recommendation:

- Staff recommends approval of an ordinance for the zoning change request from “C”, Commercial, to “SFE” Single-family estate district (Case 25-189)





Approve



Deny



# Questions / Comments

---

Emilio Sanchez  
Development Services Deputy Director  
[esanchez@burlesontx.com](mailto:esanchez@burlesontx.com)  
817.426.9686