



# **4A Economic Development Corporation Board**

## **Atmos Energy Pipeline and Aboveground Facilities Easement**

March 18, 2024

Public Works & Engineering



# Hooper Business Park Infrastructure



## Roadway/Sanitary Sewer

- Lakewood Drive under construction with temporary connection to FM 1902
- Permanent extension of Lakewood Drive to tollway under design – staff working with NTCOG, NTTA, and TxDOT (construction funding to be identified)
- Sewer lift station and force main to serve business park, Craftmasters and surrounding development – construction procurement underway

## Stormwater Retention/Detention

- Design underway – construction anticipated to begin summer 2024
- Performance Agreement obligates start of construction no later than June 30, 2024, and completion no later than September 30, 2026



# Atmos Facilities

Nearest source of existing gas – 2.5 miles away

Existing high pressure transmission gas line will extend from FM 917 and FM 1902 –  
Atmos requires a minimum exclusive 30-foot easement/right-of-way

Low pressure gas line will extend along Lakewood Drive

Regulator station converts high pressure to low pressure for distribution lines



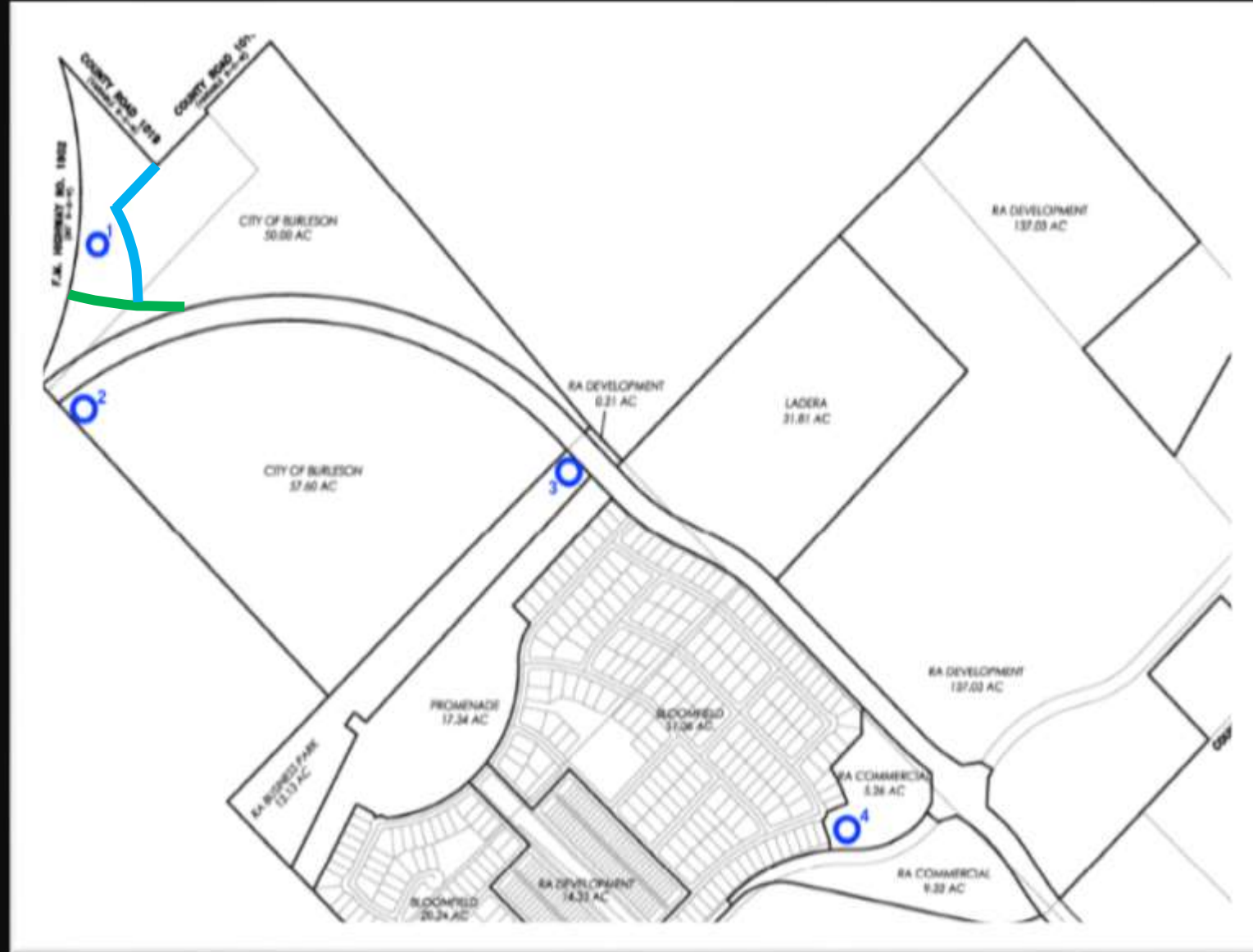


# Potential Locations for Atmos Regulator Station

4 locations evaluated

Gas to be provided for Hooper Business Park, Chisholm Summit, Craftmasters, and future development

Options presented to both the Infrastructure and Development (I&D) Committee and City Council



# Infrastructure & Development Committee and City Council

I&D Committee supported Option 1,  
the City-owned property, at its meeting  
January 10, 2024

City Council directed staff to proceed with this location at its meeting January 22, 2024

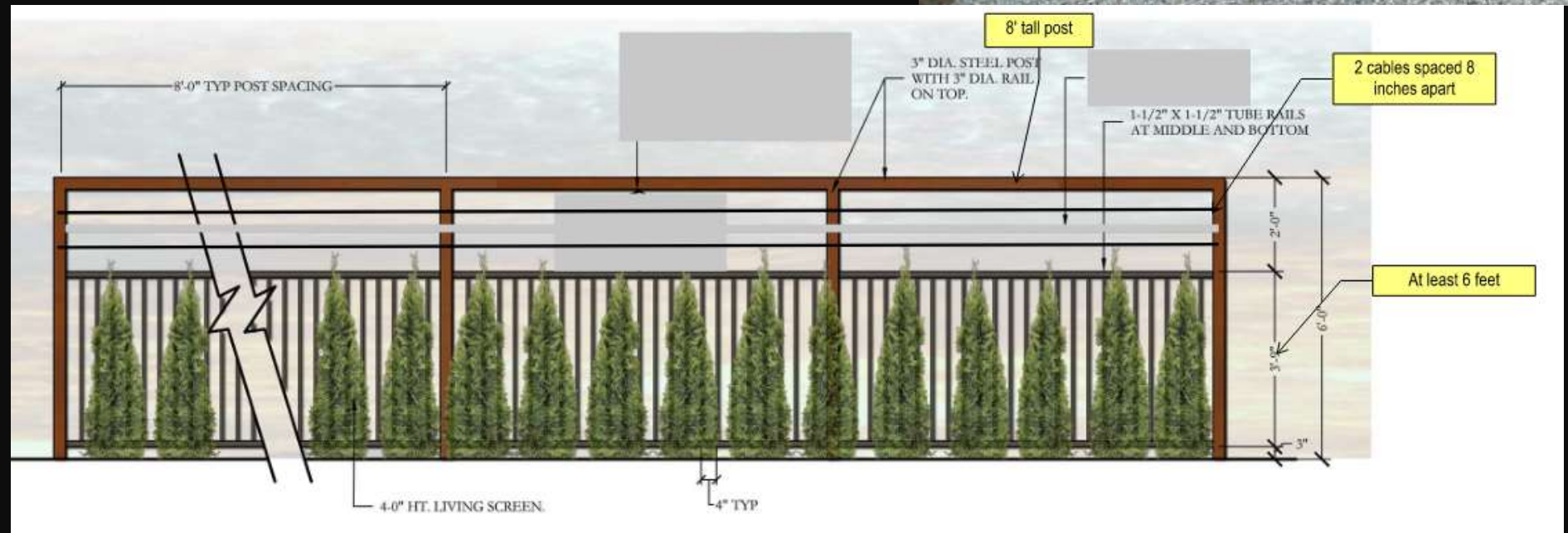
# RA Development will fund low pressure line down Lakewood Drive to serve Chisholm Summit

Gas would be available to business park –  
City's contribution is easement for the  
regulator station site



Atmos has committed to use same screening fence and landscaping proposed for Lakewood for consistency

- At least 6 ft tall ornamental fence with 3 in diameter steel posts to 8 ft tall
- Two cables spaced 8 inches apart at top
- Landscape to be consistent with Lakewood Drive and the sanitary sewer lift station

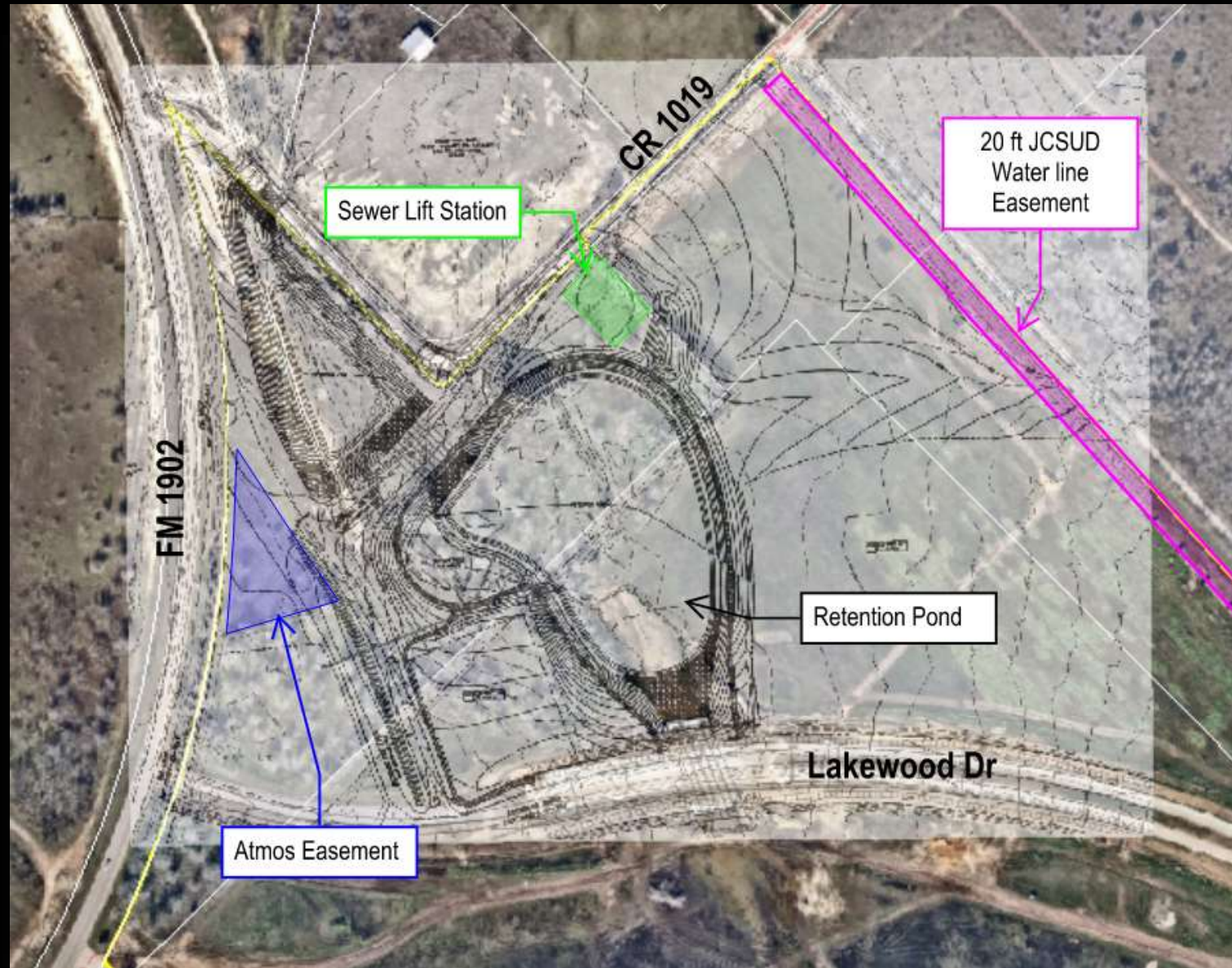


**Construction anticipated to begin in July 2024 with a 45-day estimated duration, contingent upon weather**



# Action Requested

Approve a request for a permanent pipeline and aboveground facilities easement Atmos Energy Corporation within the Hooper Business Park property



# Questions / Discussion

Michelle McCullough  
Assistant Director / City Engineer  
817-426-9616  
[mmccullough@burlesontx.com](mailto:mmccullough@burlesontx.com)