



4A Economic Development  
Corporation Board  
March 18, 2024

---

# **20-foot Water Line Easement**

## **Johnson County Special Utility District**

# Hooper Business Park Infrastructure



## Roadway/Sanitary Sewer

- Lakewood Drive under construction with temporary connection to FM 1902
- Permanent extension of Lakewood Drive to tollway under design – staff working with NTCOG, NTTA, and TxDOT (construction funding to be identified)
- Sewer lift station and force main to serve business park, Craftmasters and surrounding development – construction procurement underway

## Stormwater Retention/Detention

- Design underway – construction anticipated to begin summer 2024
- Performance Agreement obligates start of construction no later than June 30, 2024, and completion no later than September 30, 2026





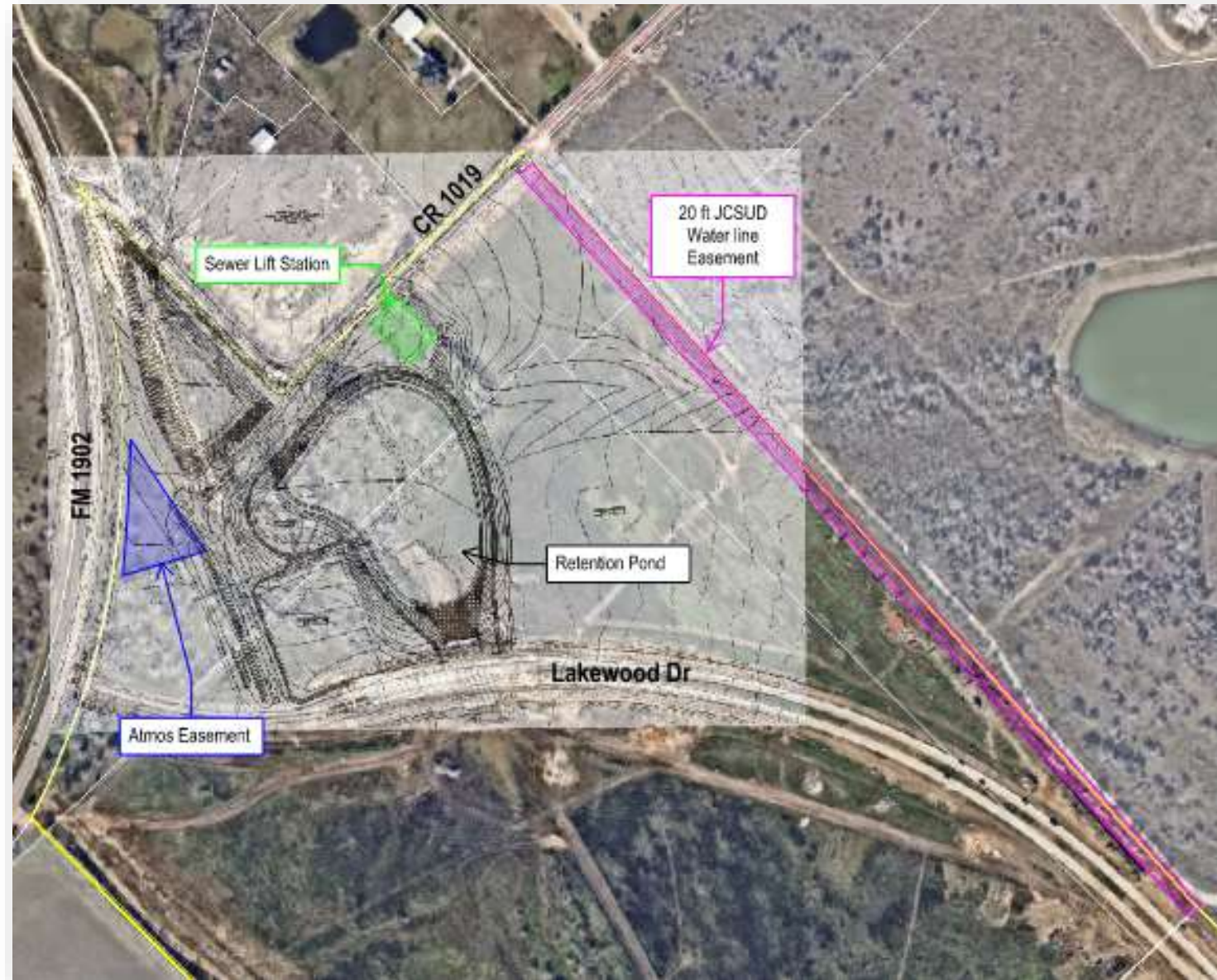
# 20-foot Water Line Easement

RA Development constructing 20-inch water line from CR 1019 to Chisholm Summit master planned community

Water line will serve Craftmasters and Hooper Business Park

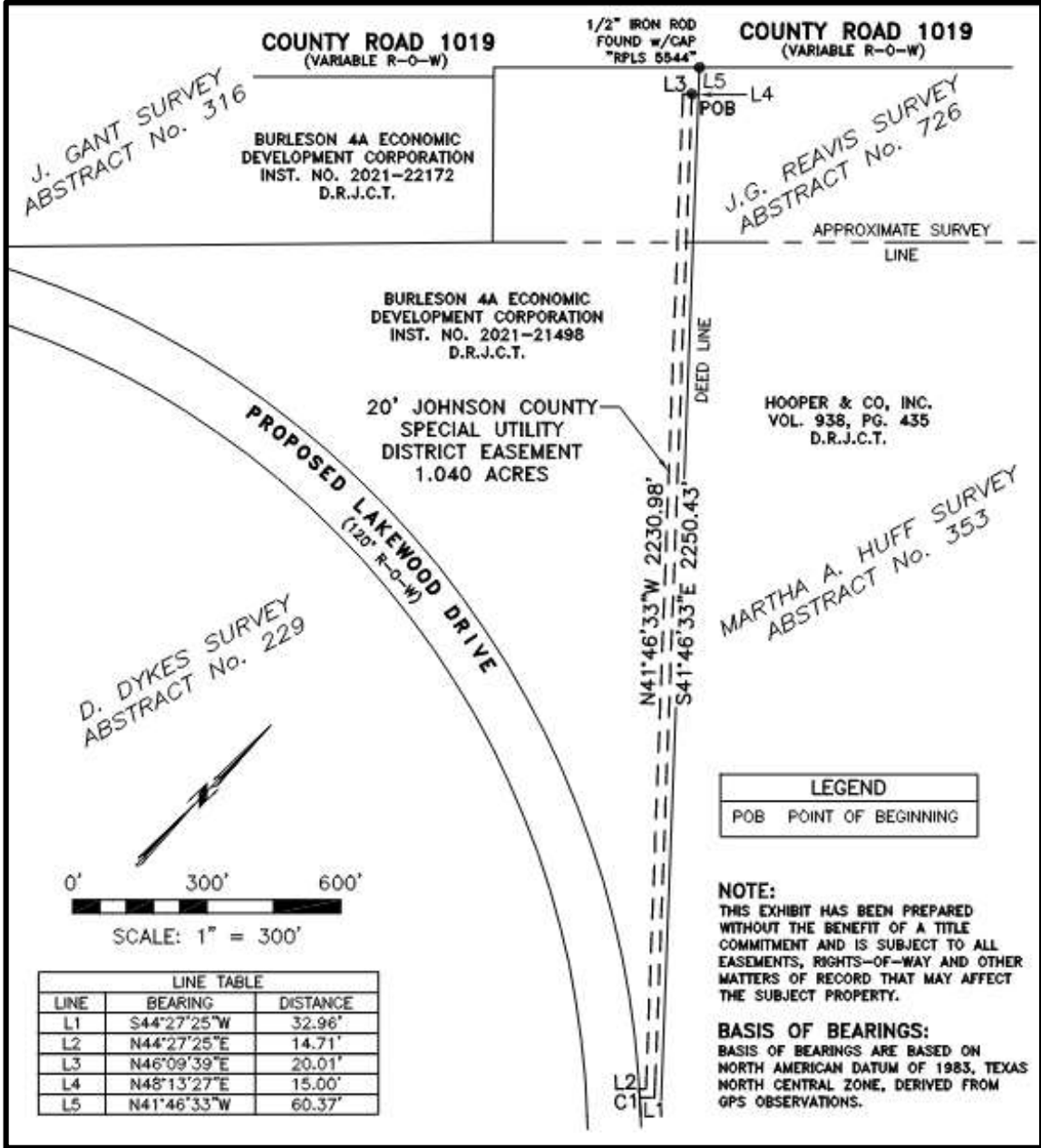
City's contribution is 20-foot-wide water line easement

Easement located along eastern property line – no conflict for future development



# Action Requested

Approve a request for a permanent 20-foot-wide water line easement with Johnson County Special Utility District located within the Hooper Business Park property





# Staff Contact

**Michelle McCullough**  
**Assistant Director/City Engineer**  
**817-426-9616**  
**[mmccullough@burlesontx.com](mailto:mmccullough@burlesontx.com)**