

Food Truck Park 2635 S Burleson Blvd

Location:

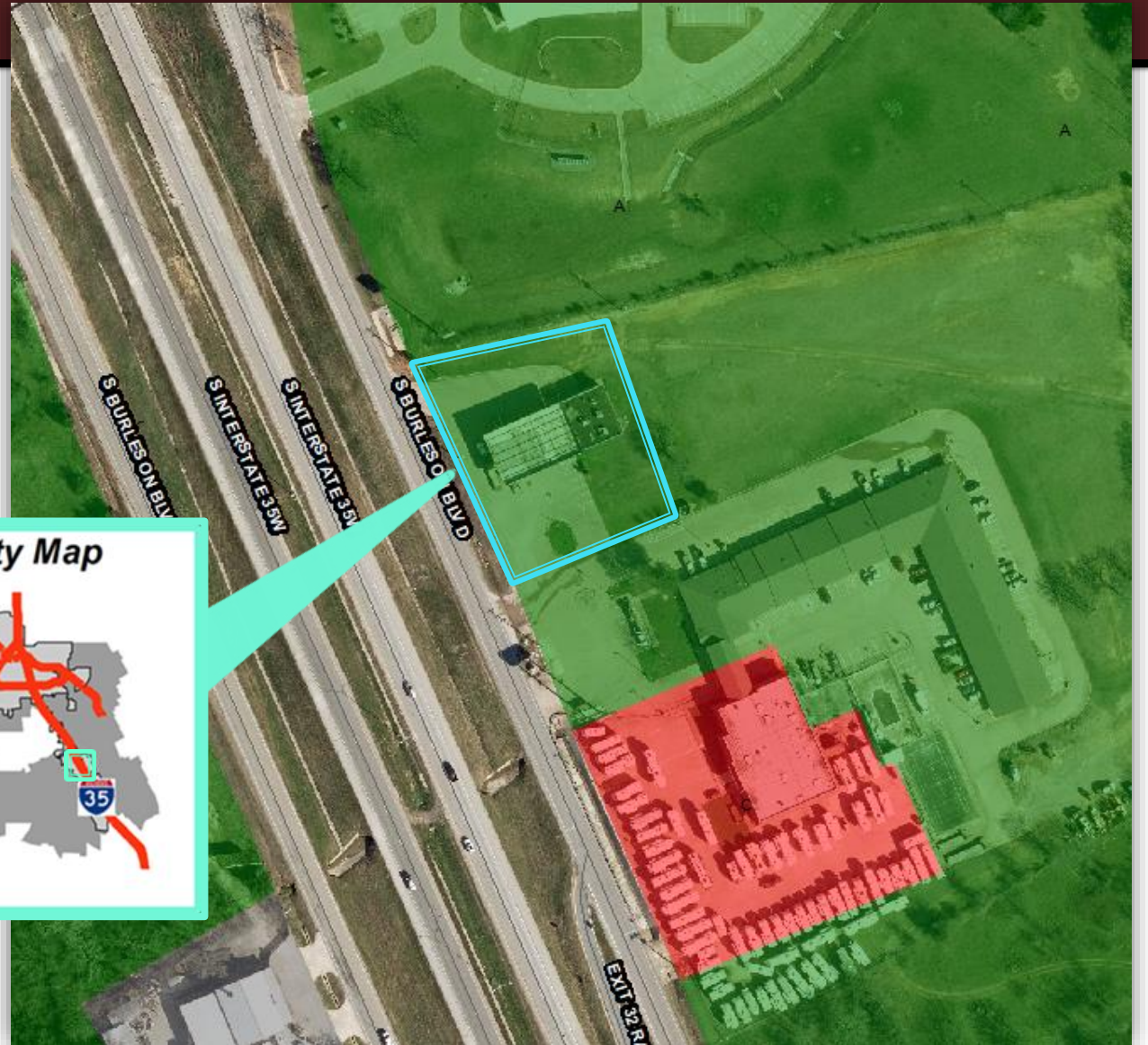
- 2635 S Burleson Blvd.
- 1.00 acre

Applicant/Owner:

Suleman Sultan
RSS-97 Inc.

Item for approval:

Zoning Change with a specific
use permit for "Food Truck
Park" (Case23-028)



Food Truck Park 2635 S Burleson Blvd

Background

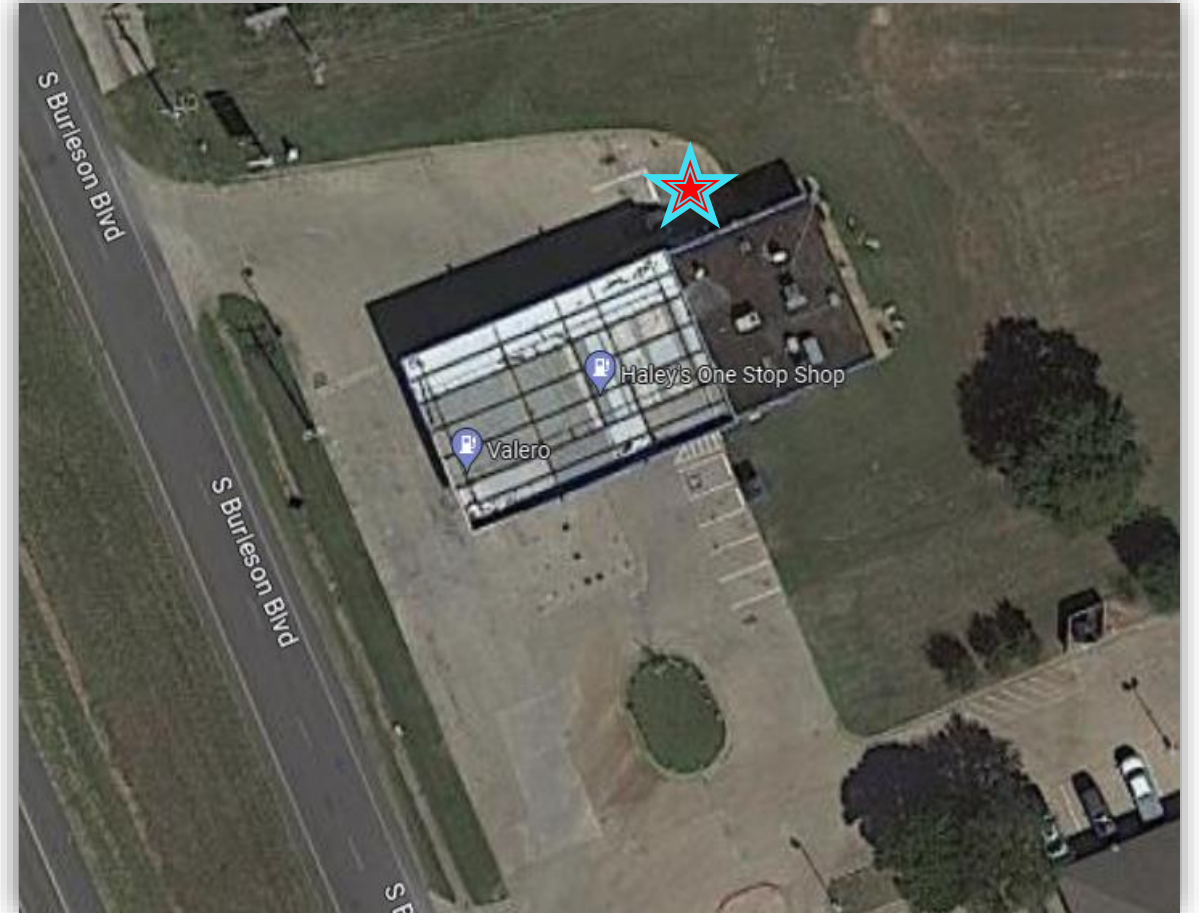
Current zoning is A, Agricultural

- 1-acre site containing Valero Gas Station
- Applicant requesting to operate a food truck on the same property

Requirements

Per the Food Trucks Ordinance:

- Provides two processes allowing for the operation of a food truck: Food truck operation site & Food truck park
 - Applicant was unable to comply with a food truck operation site standard and is now pursuing a food truck park.
- Food Truck Parks are permitted if approved by SUP



Food Truck Park 2635 S Burleson Blvd

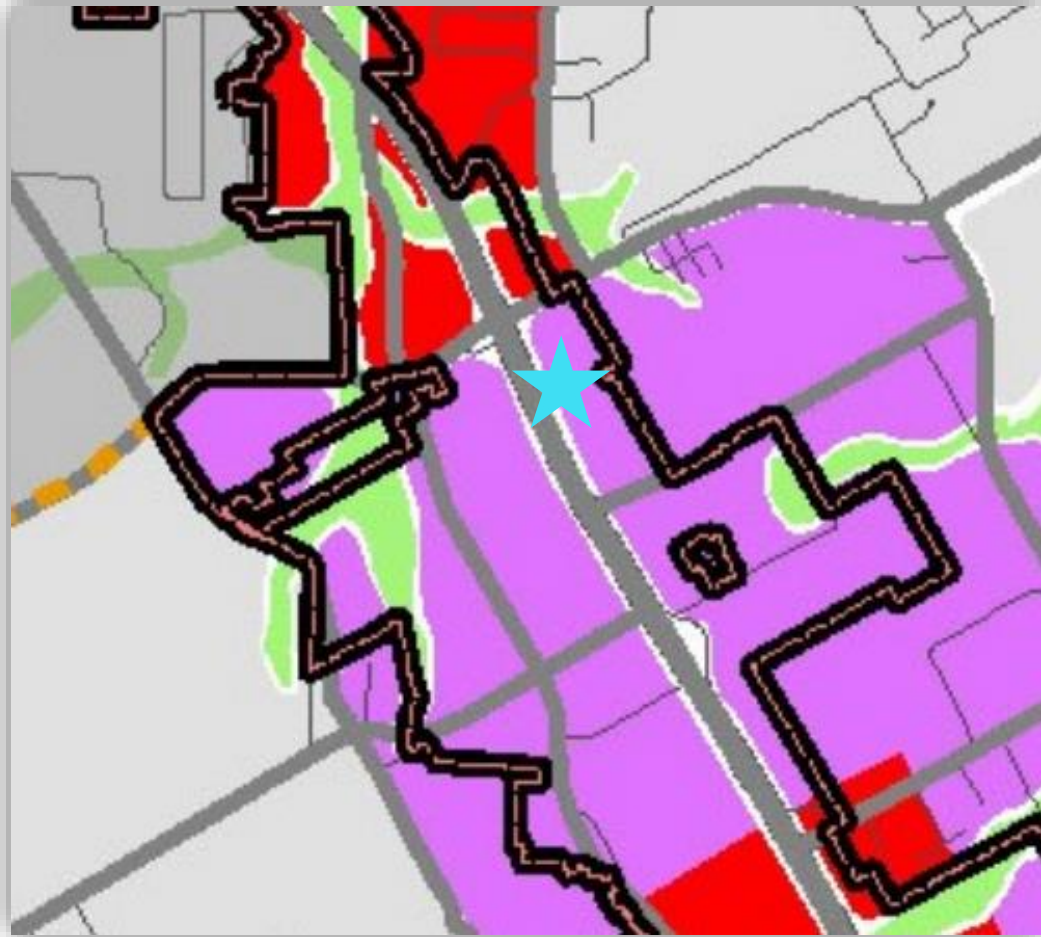
Requests

- SUP allowing for a “Food Truck Park” to operate at 2635 S Burleson Blvd.
- Rezone property from A, Agricultural, to GR, General Retail (losing legal non-conforming status)



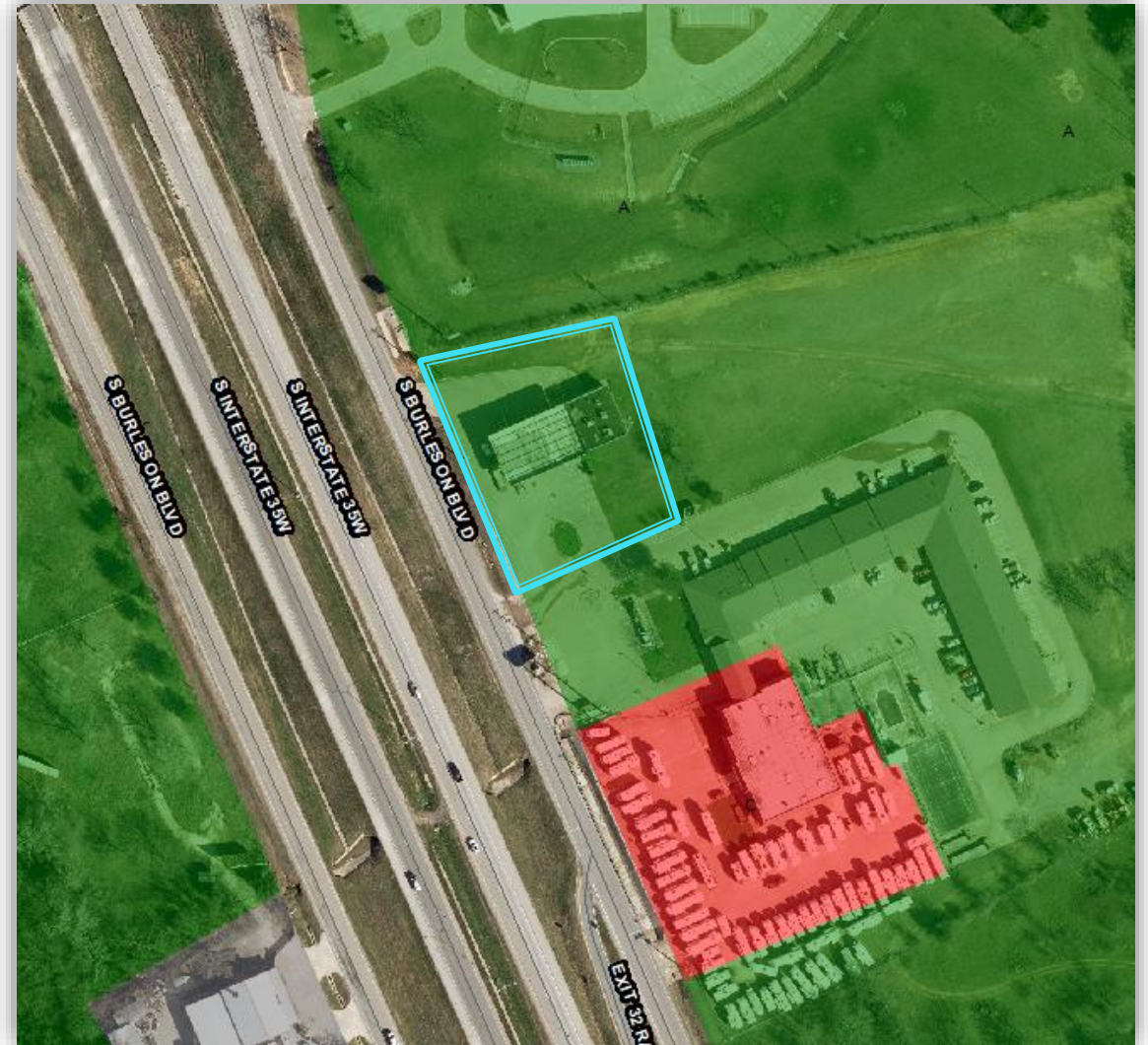
Comprehensive Plan

Employment Growth Center



Current Zoning

A, Agricultural

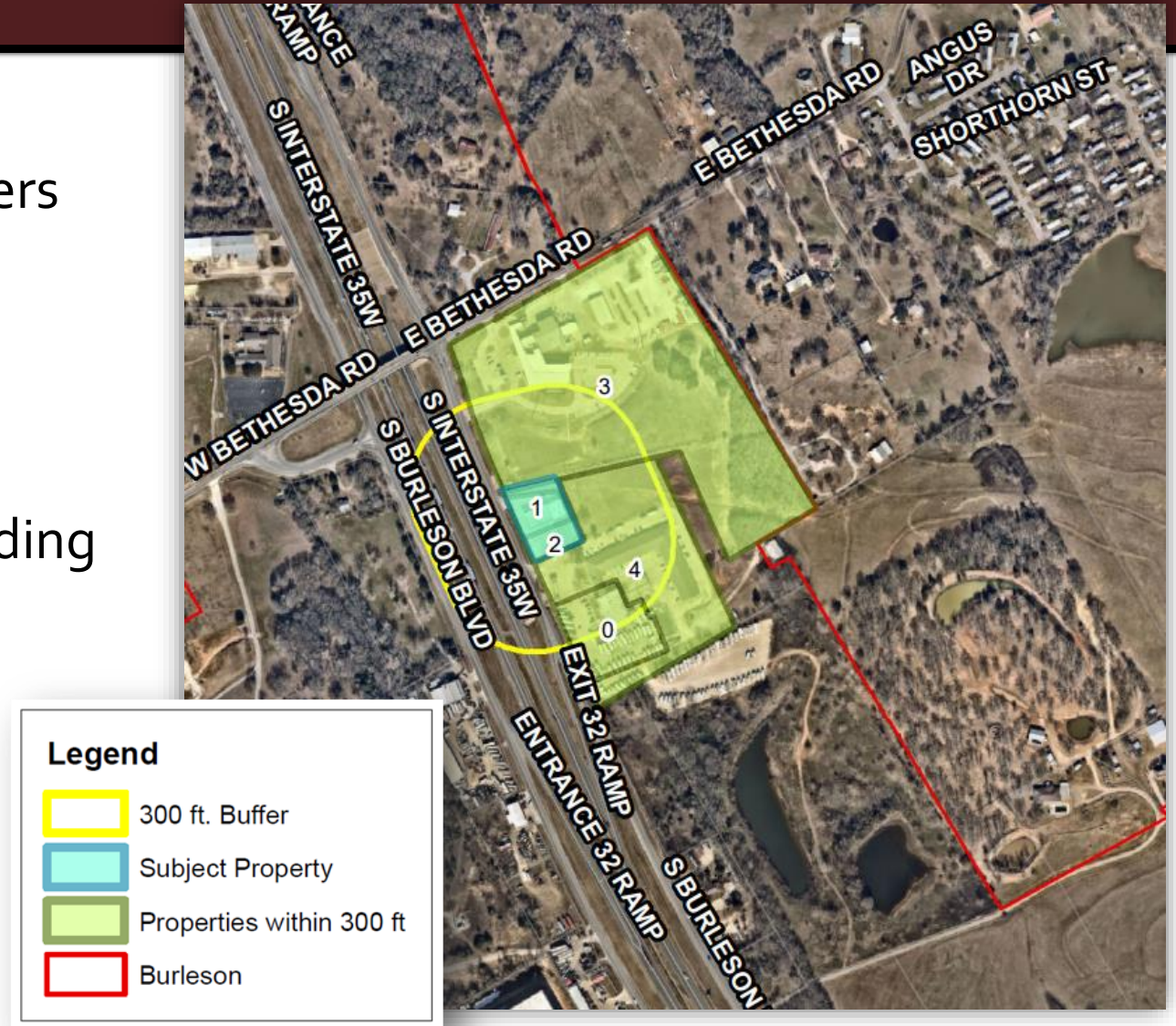


Food Truck Park 2635 S Burleson Blvd

Public Hearing Notice

- Public notices mailed to property owners within 300 feet of subject property.
- Published in newspaper.
- Sign posted on the property.

Staff has not received any inquiries regarding this request.



Food Truck Park 2635 S Burleson Blvd

P&Z Summary

Vote

The Planning and Zoning Commission recommended approval of the applicant's request, based on staff's recommendation, by a vote of eight to zero.

Discussion

None

Speakers

None

Food Truck Park 2635 S Burleson Blvd

Staff's Recommendation

Staff recommends approval of the ordinance for a zoning change request from "A", Agricultural, to "GR" General Retail with a Specific Use Permit, allowing for a "Food Truck Park" to operate at 2635 S Burleson Blvd with the following condition:

- The Food truck park shall be limited to no more than 2 food trucks at any given time.

