

# ETJ Boundary Agreement -Animal Pancakes

## Location:

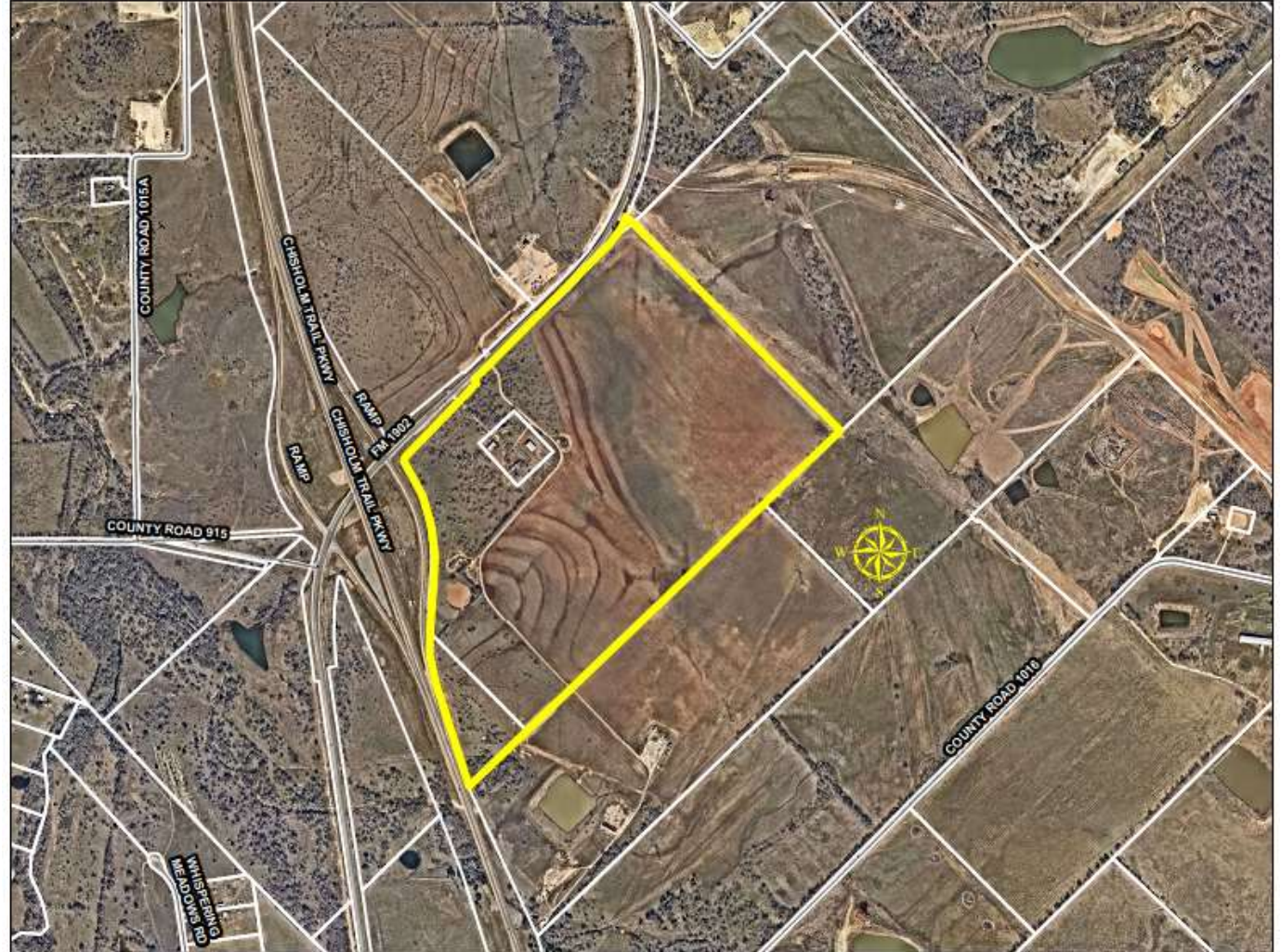
- 130.446 acres of land located at 9340 FM 1902

## Applicant:

City of Burleson

## Item for approval:

Approve ETJ boundary agreement between the Cities of Burleson and Fort Worth



# ETJ Boundary Agreement-Animal Pancakes

- Staff from the cities of Burleson and Fort Worth have been in discussions regarding the release of 130.446 acres of land located at 9340 FM 1902
- As the city continues to grow, it is beneficial for the city to proactively capture strategic sites for the purposes of roadway improvement and corridor planning purposes.
- If property is contained within Burleson's ETJ, it will allow greater regulatory authority in this emerging west-end corridor.





# ETJ Boundary Agreement-Animal Pancakes

## Staff's Recommendation

- Staff recommends approval of the ETJ boundary agreement.
- If approved, Fort Worth will conduct a subsequent meeting to release the property from their ETJ.
- City's ETJ boundary and map will be amended accordingly.

