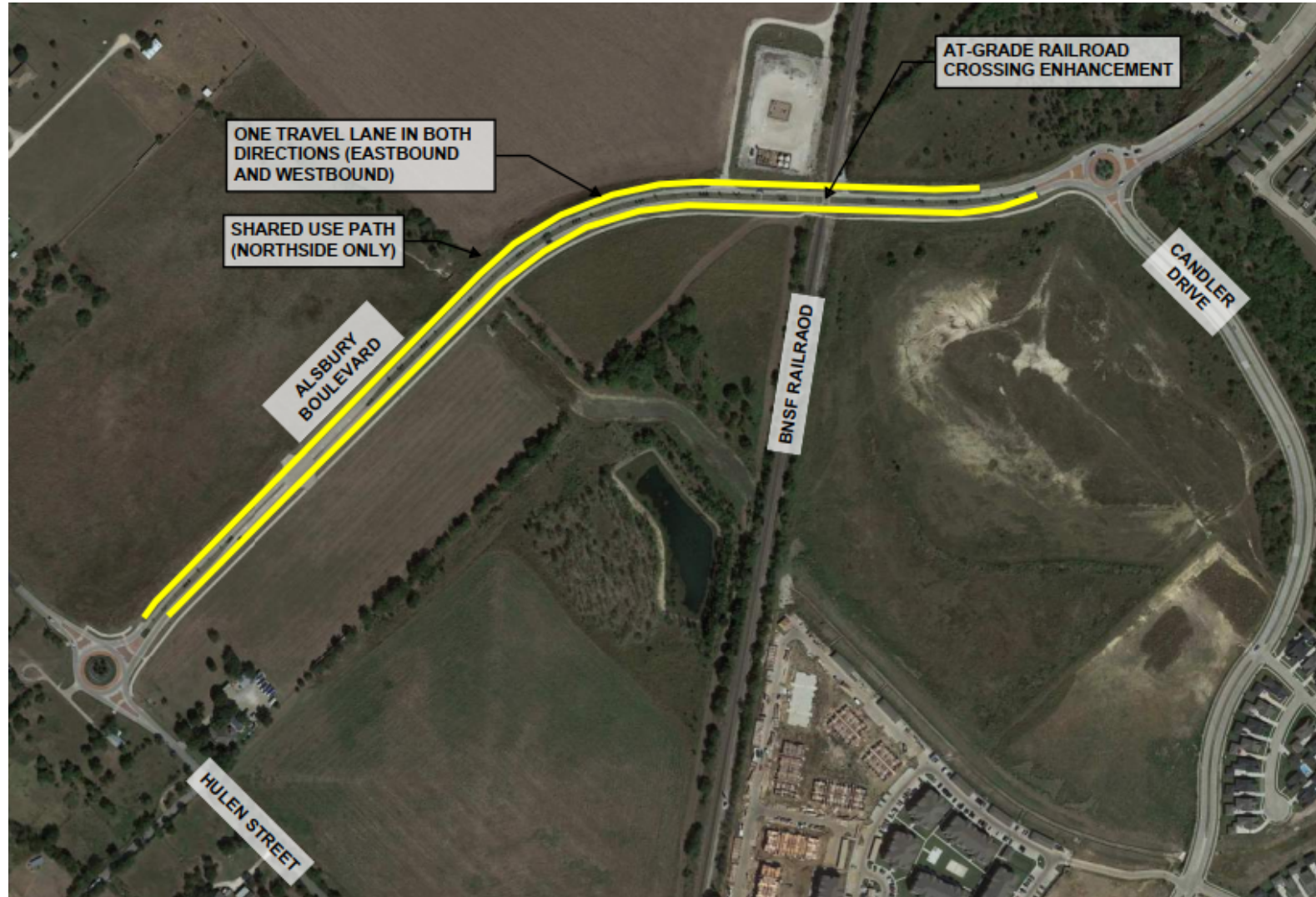


# ALSBURY BLVD. -PHASE 1B

Engineering Services Contract with Freese and Nichols to complete Design.



# PROJECT HISTORY

- **Overview of project significance**

Key connection to west & Alsbury Blvd extension

- **Original Phase 1**

From Candler Dr. to Hulen St.

Constructed both roundabouts, inside 2 travel lanes, and south side 10 ft. shared use path

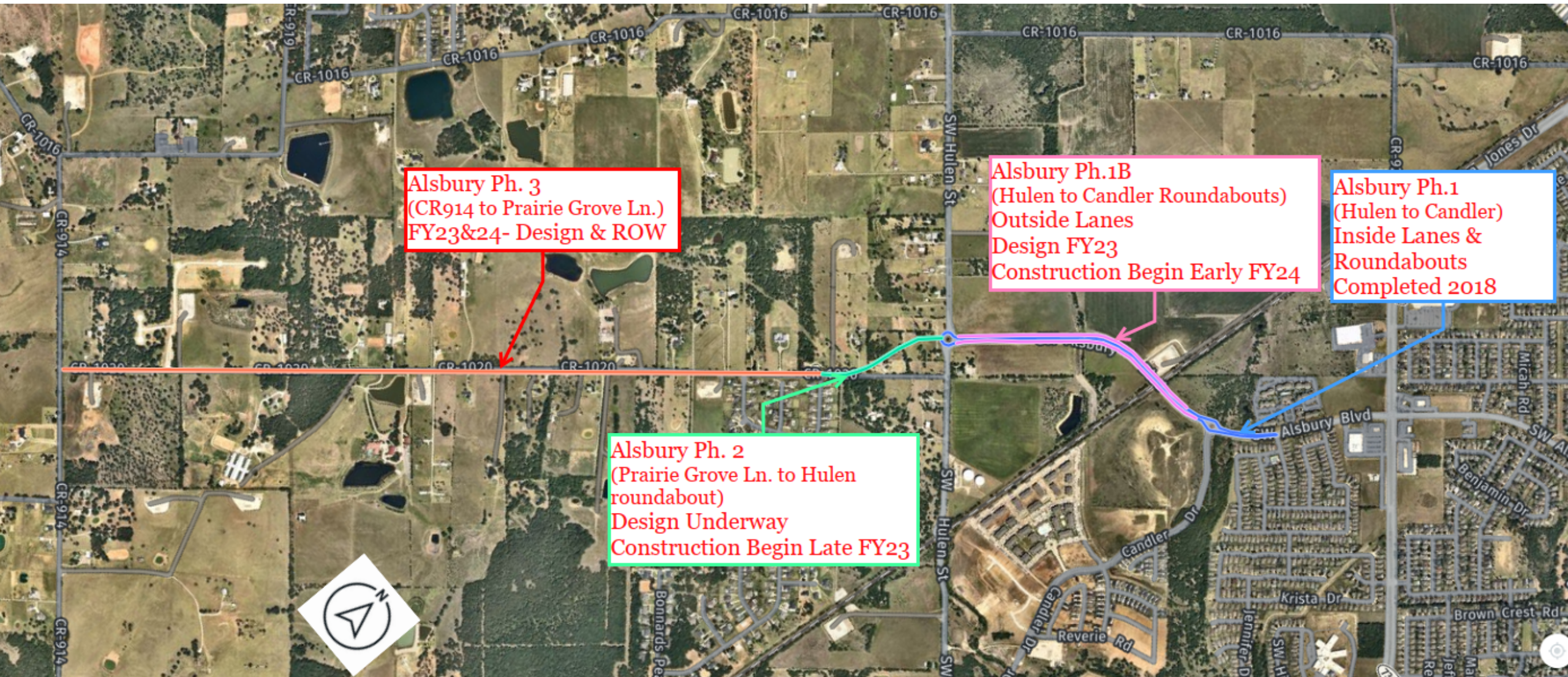
Acquired 120 ft. of right-of-way to accommodate ultimate build out ( represented by Phase 1B)

- **Moving Forward (Phase 1B)**

- Designs the outside travel lanes and the north side 10 ft. shared use path
- Includes BNSF Railroad Coordination to expand at grade crossing for 2 additional driving lanes
- Includes water line extension beneath BNSF railroad for future development
- Includes re-design of the storm inlets to recessed curb inlets to create wider parkways
- Includes irrigation and landscaping within the outside parkway



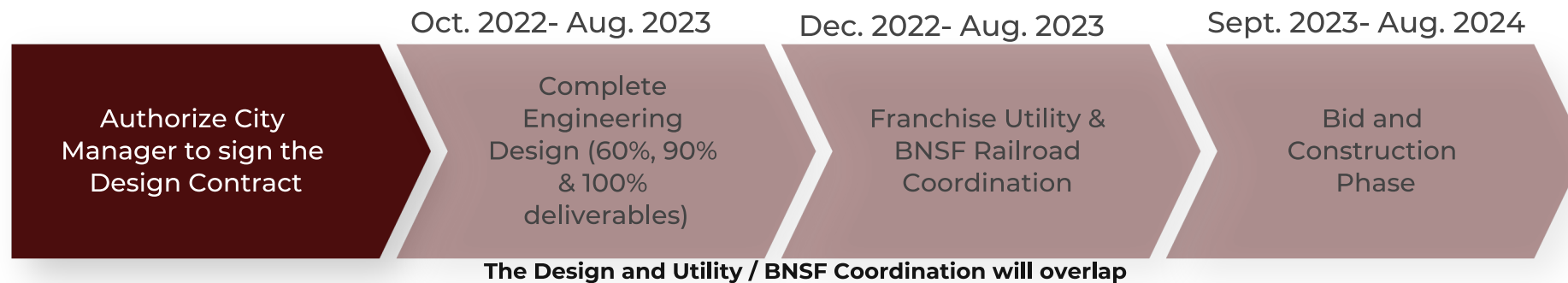
# ALSBURY BLVD.





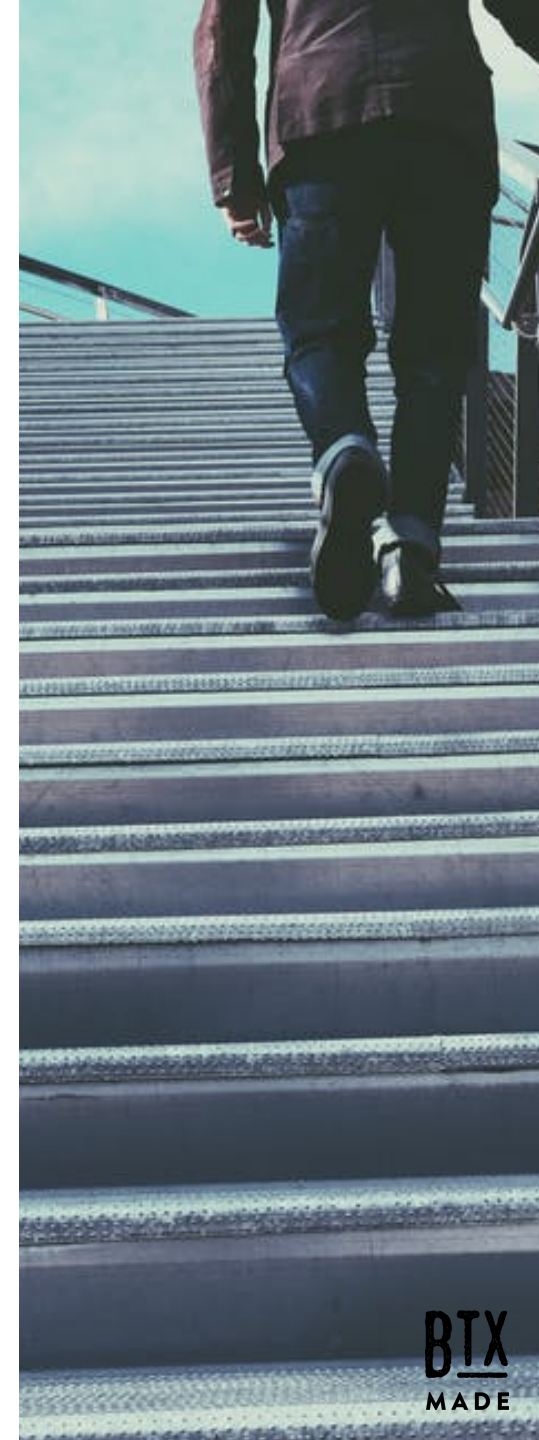
# Next Steps

## Overlapping Tasks Ahead



## Funding Schedule

Project from CMO Budget list of Additional CIP Projects  
FY 23 Impact Fees Zone B- \$360,500 Design  
FY 24 CO's \$3,500,000 Construction





# OPTIONS

- 1 Approve an Engineering Services Contract with Freese and Nichols for the design of Alsbury Blvd- Ph. 1B from Candler to Hulen in the amount of \$360,500.00.
- 2 Deny an Engineering Services Contract with Freese and Nichols for the design of Alsbury Blvd- Ph. 1B from Candler to Hulen in the amount of \$360,500.00.

