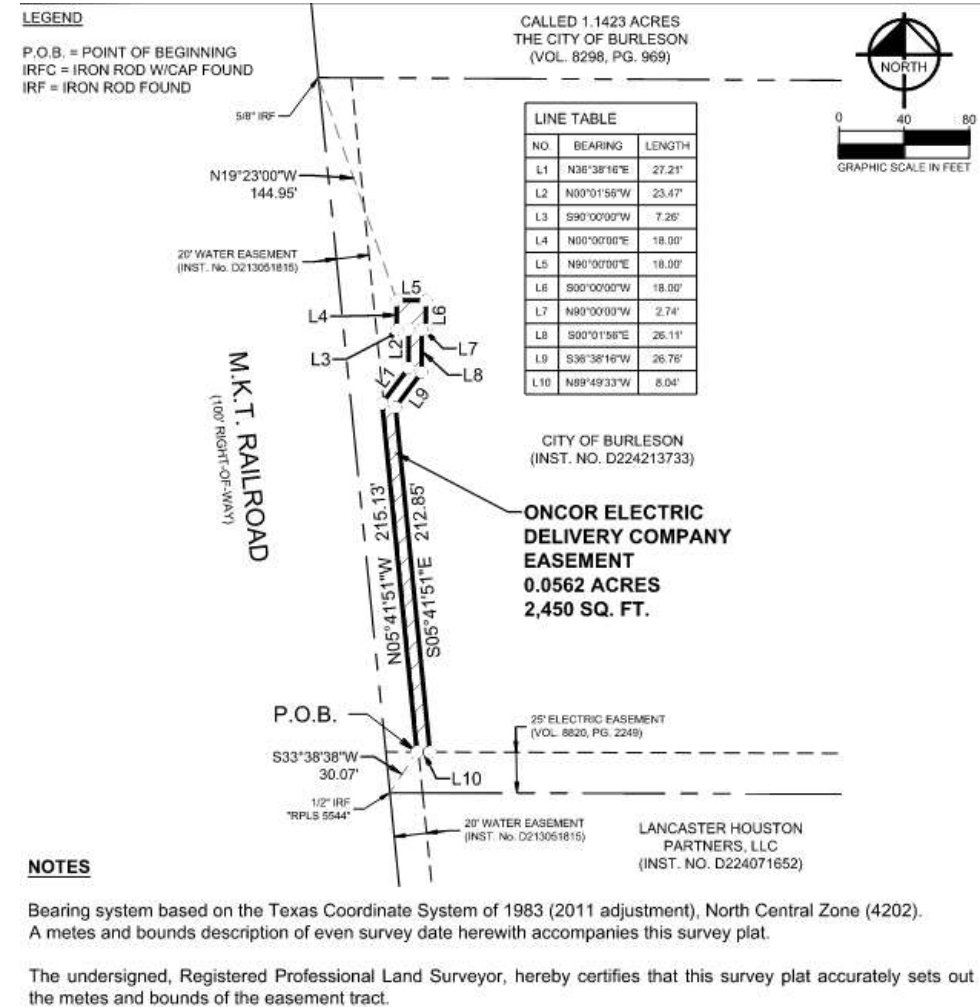


# Industrial Blvd. Pump Station Expansion & Alsbury Pump Station Decommissioning Project

## Oncor Electric Delivery Company Easement

June 2, 2025



# Project Overview

This project consists of two main components:

- Expanding the Industrial Blvd. pump Station facility
- Decommissioning the Alsbury pump station



# Oncor Electric Delivery Company Easement

The Industrial Blvd. Pump Station Project has completed the platting process, with the plat approved by the Planning and Zoning Commission and subsequently recorded. Oncor has requested that the utility easement be dedicated by separate instrument, as this is their standard method for tracking easements by metes and bounds.

# Recommended Council Action

Approve a variable width permanent Oncor Electric Delivery Company Easement associated with the Industrial Pump Station Project located on Industrial Park Boulevard.

# Questions / Discussion

Randy Morrison, PE  
Director of Capital Engineering  
[rmorrison@burlesontx.com](mailto:rmorrison@burlesontx.com)  
817-426-9295