

# Chisholm Summit Annexation

## Location:

- 9825 CR 1016
- 88.471 acres

## Applicant:

Justin Bond (RA Development)

Rocky Bransom

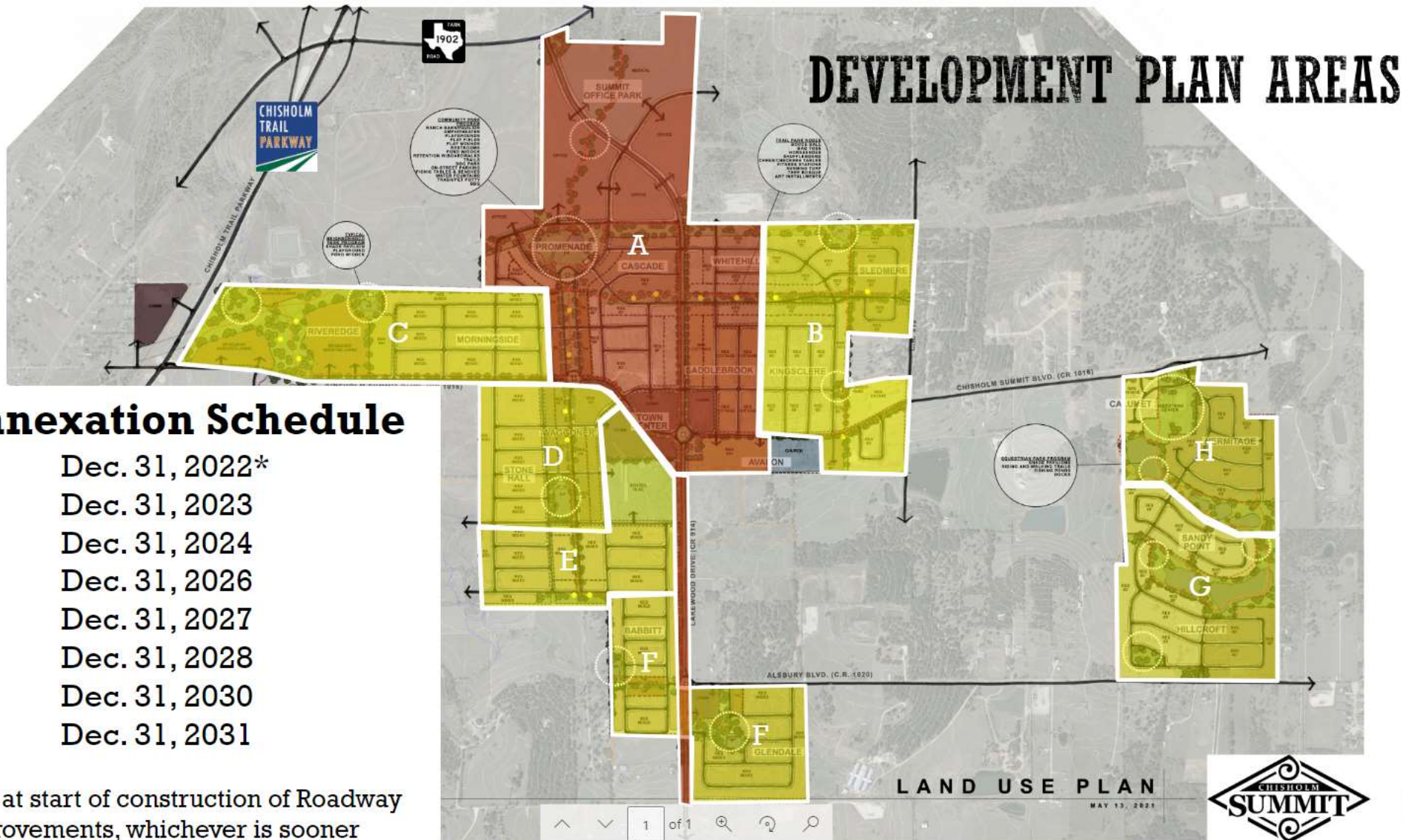
## Item for approval:

Annexation related to a previously approved development agreement (Case 23-375). To date, the City has annexed 234.304 acres.





# Chisholm Summit Annexation (Phase B)



## Annexation Schedule

- A – Dec. 31, 2022\*
- B – Dec. 31, 2023
- C – Dec. 31, 2024
- D – Dec. 31, 2026
- E – Dec. 31, 2027
- F – Dec. 31, 2028
- G – Dec. 31, 2030
- H – Dec. 31, 2031

\*OR at start of construction of Roadway Improvements, whichever is sooner



# Comprehensive Plan

## Neighborhoods



# Zoning

## ETJ

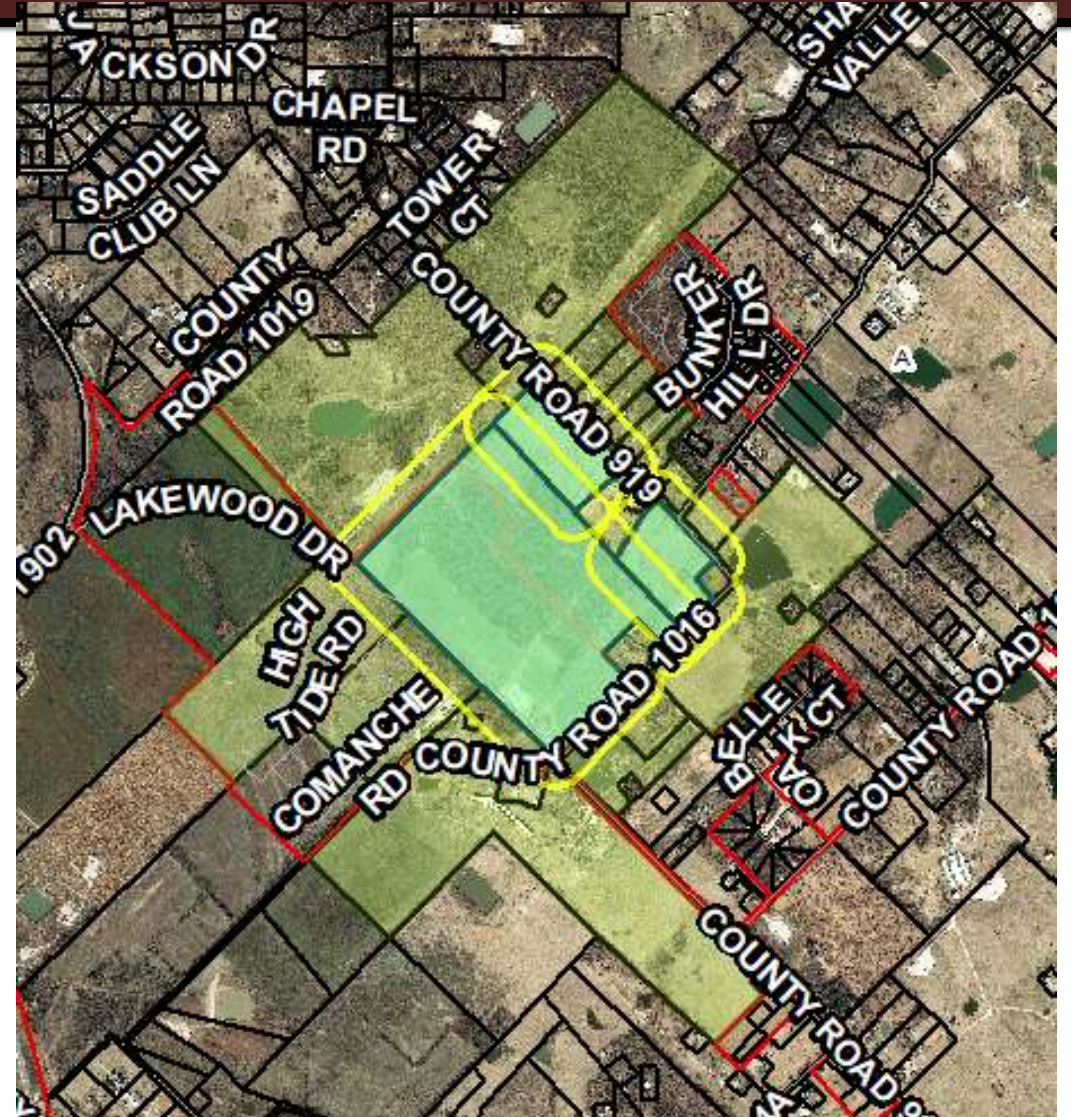




# Chisholm Summit Annexation

## Public Hearing Notice

- Published in newspaper
- Posted on City Website
- Notified school districts and sent utility letters for annexation.



# Chisholm Summit Annexation

## Staff's Recommendation

- Staff recommends approval of annexation of 88.471 acres for Chisholm Summit at 9825 CR 1016:
- Proposed Planned Development furthers the goals and vision of the Comprehensive Plan
- Part of previously approved development agreements

