



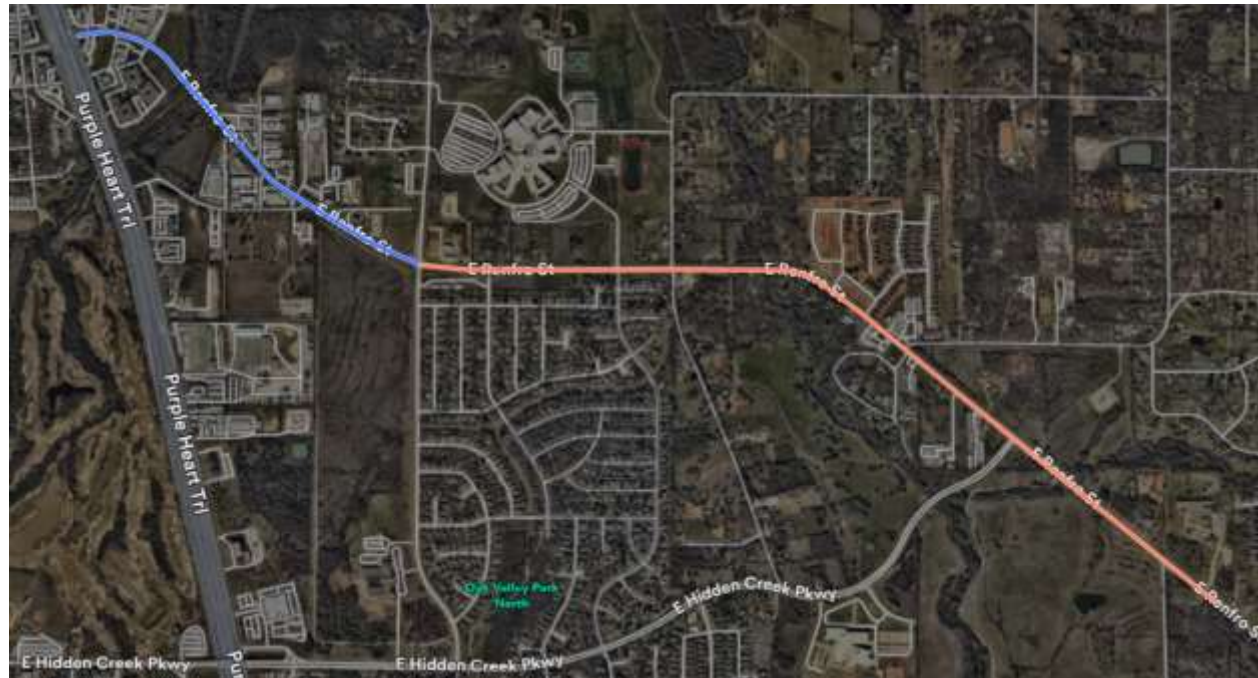
TxDOT Acquisitions - FM 3391 (East Renfro) Widening Project

CITY COUNCIL

MAY 6, 2024

FM 3391 Widening by TxDOT

- From IH35W to East of CR 602
 - Widening from two to six lanes from IH35W to Hurst (below in **blue**)
 - Widening from two to four lanes from Hurst to CR 602 (below in **orange**)
- 60% Design, land acquisition and utility coordination underway
- Advertising for construction bids anticipated September 2028
- \$53.7M project

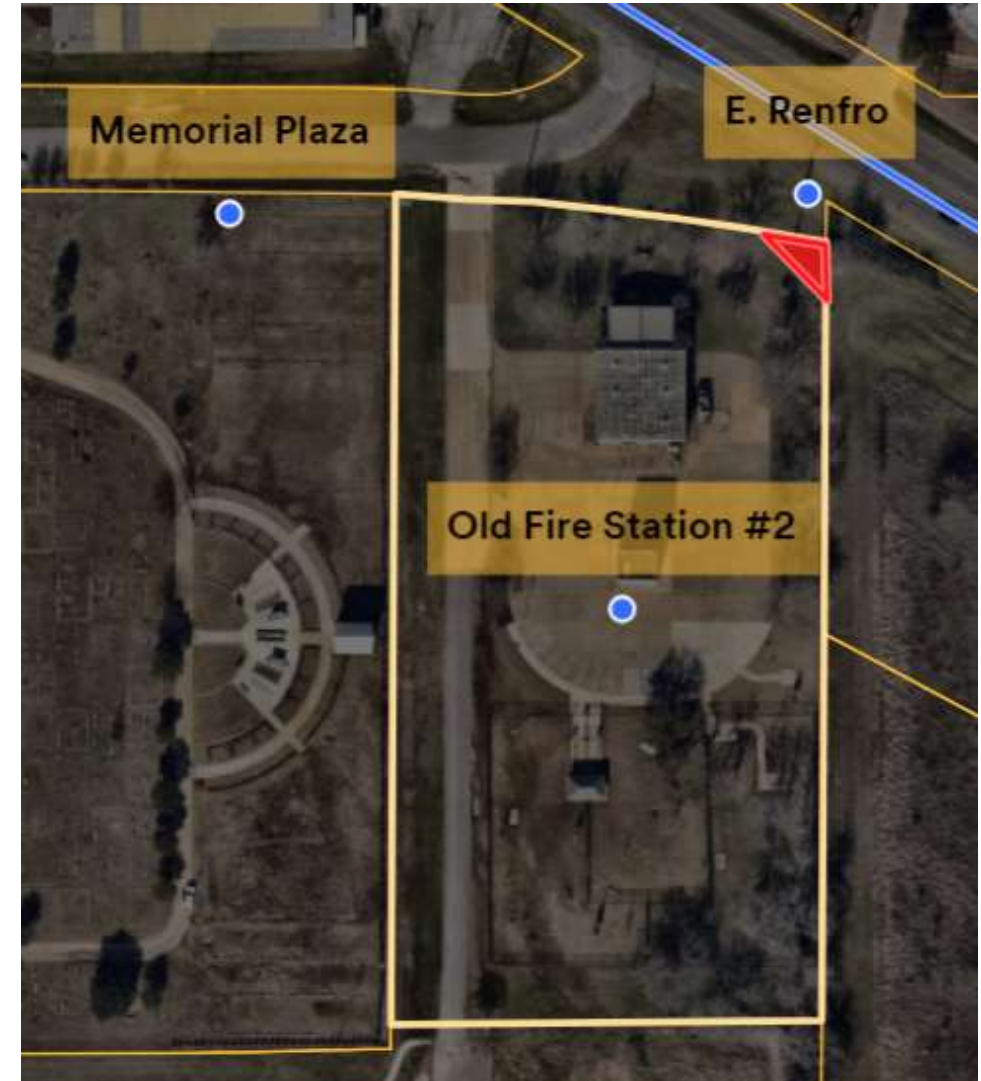


Acquisitions Needed from Burleson (Parcel #15)

0.005 ac (218sf) of Old Fire Station 2 site

- Relatively small portion of overall 3.547 ac property (shown to the right, shaded in red)
- Appraised value of 218sf: **\$654**
- TxDOT minimum by policy: **\$1,000**

TxDOT Offer: \$1,000



Acquisitions Needed from Burleson (Parcel #21)

0.0066 ac (287sf) of City right-of-way near the intersection of E. Renfro and Cardinal Ridge

- Relatively small portion of overall 3.547 ac (shown to the right, shaded)
- Appraised value 287sf: **\$10,799**
 - \$1,866 for the land
 - \$8,933 for improvements

TxDOT Offer: \$10,799



Acquisitions Needed from Burleson



- Similar agenda items appeared on the April 15th City Council meeting agenda for both parcels; however, the resolutions accompanying the items contained the incorrect offer letters from TxDOT.
- The resolutions on these agenda items for each parcel have been corrected to include the correct offer letters from TxDOT.

Action Requested



The two offers represent just compensation using industry-standard appraisals with third-party reviews. As a result staff recommends:

approval of resolutions authorizing the City Manager to execute all necessary documents to enter into and close on a real estate contracts with the Texas Department of Transportation, as purchaser, for parcels #15 and #21 as presented.

Questions / Discussion

Errick Thompson, P.E., CFM®
Director of Public Works & Engineering
ethompson@burlesontx.com
817-426-9610