

Lakewood Drive Extension

Design Amendment



Lakewood Drive



Lakewood is included on the city's MTP as a 4-lane divided arterial (estimated 20,000 to 24,000 vehicles per day in the future)

Construction currently underway between CR 1020 and FM 1902 – anticipate completion in early 2025

Will serve as the direct connection from SH 174, Alsbury Blvd, and Hulen Street

Considered critical to the roadway network as development continues within the city and extraterritorial jurisdiction

Serves as primary access or “gateway” to Hooper Business Park

March 20, 2023 – City Council approved professional services agreement for design of Lakewood Drive Extension to Kimley-Horn and Associates, Inc. (KH)

Original Contract Scope

Design Survey/Traffic Study	Chisholm trail Parkway Intersection Improvements
Schematic Design	FM 1902 Realignment
Preliminary and Final Design	Franchise Utility Coordination
TxDOT and Federal Documentation	Construction Bidding and Administration
Environmental Clearance	

Lakewood Drive Extension

Traffic Study

Scope included traffic study to analyze existing and future conditions

Study confirmed alternative alignment as the most efficient configuration for traffic flow – see highlighted graphic to the left

TxDOT agreed alternative alignment is preferred and FM 1902 should be realigned

Build out volume > 20,000 vehicles on Lakewood Drive



Lakewood Drive Extension

Traffic Study

Initial data indicated higher volumes than anticipated along CR 915 – KH indicated traffic signal may be warranted due to volumes and crash data

- Analysis CR 915 and FM 1902 intersection was not included in original contract scope
- Traffic flow and operation may be negatively impacted if traffic signal is not considered in overall schematic – KH recommended including intersection in analysis
- Contract scope included design of intersection improvements at the tollway intersection – traffic study indicated traffic signals not warranted until 2045
- Funds from intersection improvements were utilized to offset costs associated with CR 915 and FM 1902 intersection analysis – results in net zero increase



Lakewood Drive Extension

TxDOT/NCTCOG Coordination

KH and Burleson staff met with TxDOT and NCTCOG numerous times over the last year

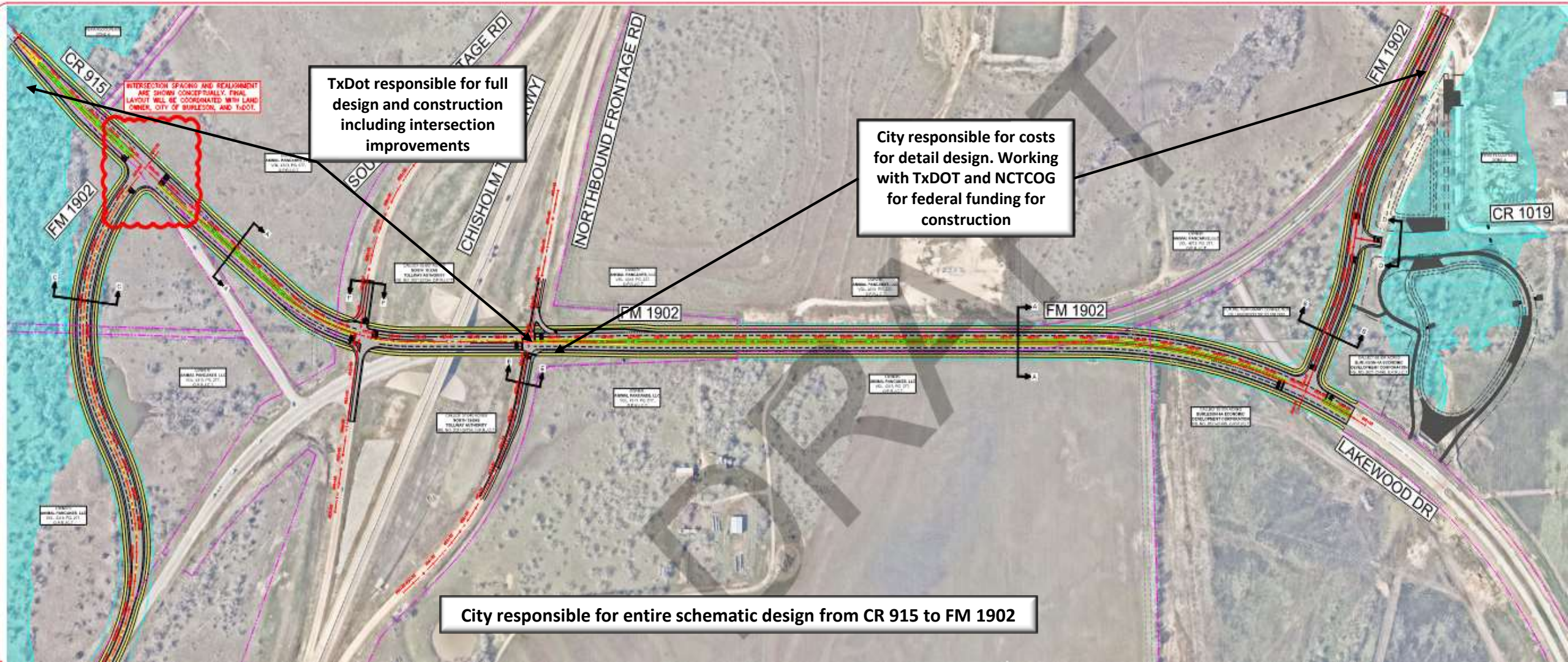
Conceptual layout of CR 915 and FM 1902 realignment presented to TxDOT

- Discussions were held regarding the draft traffic study results including the results of the analysis of the intersection of CR 915 and FM 1902
- All entities agreed the west side of the tollway should be included in the schematic design due to traffic volumes and the current need for a traffic signal

City staff agreed to provide an amendment to the existing design contract (to include the west side of tollway in schematic design) to City Council

TxDOT would be responsible for all costs associated with detailed design and construction of the west side improvements, including the future tollway intersection improvements

Lakewood Drive Extension Realignment Exhibit



INTERSECTION SPACING AND REALIGNMENT ARE SHOWN CONCEPTUALLY. FINAL LAYOUT WILL BE COORDINATED WITH LAND OWNER, CITY OF BURLESON, AND TxDOT.

TxDot responsible for full design and construction including intersection improvements

City responsible for costs for detail design. Working with TxDOT and NCTCOG for federal funding for construction

City responsible for entire schematic design from CR 915 to FM 1902

Transportation Improvement Plan (TIP)

Construction Costs continue to increase, making funding challenging

TIP is TxDOT's 4-year capital improvement project

- Short-term programming document
- Serves to support long-range statewide transportation plan
- Projects included in TIP expected to begin construction within 4 years
- Projects eligible to be partially or fully funded

Requirements for eligibility

- Roadway has to be included in the Federal Functional Classification Systems (FFCS) as a major collector or above
- Included in the NCTCOG Mobility Plan
- Included in a TIP

Traffic study with conceptual plan and high-level costs is the first step towards discussions with NCTCOG to begin the process of requesting Alsbury Blvd. to be included in the FFCS and subsequently in a TIP program

4A EDCB Requested Action

Approve an amendment to the professional services contract CSO#5045-03-2023 for \$120,277.00 with Kimley-Horn and Associates, Inc. for a total contract amount of \$1,211,192.00 for the design of the extension of Lakewood Drive from FM 1902 to Chisholm Trail Parkway

Questions/Discussions

Michelle McCullough

City Engineer / Deputy Director of Development Services

817-426-9616

mmccullough@burlesontx.com