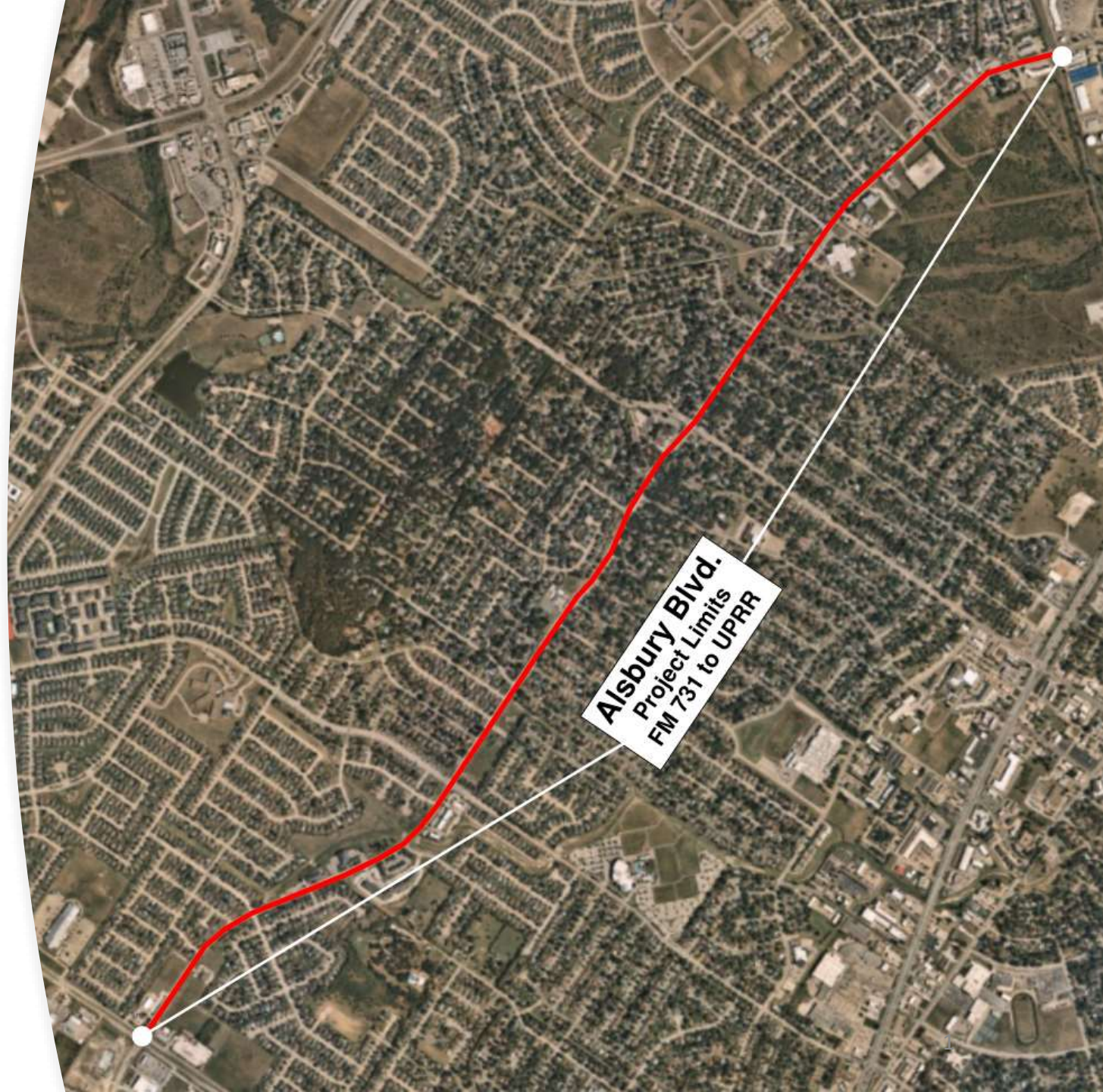


ALSBURY BLVD CORRIDOR ANALYSIS

City Council
December 9, 2024



Alsbury Blvd.

Included on the city's MTP as an arterial roadway

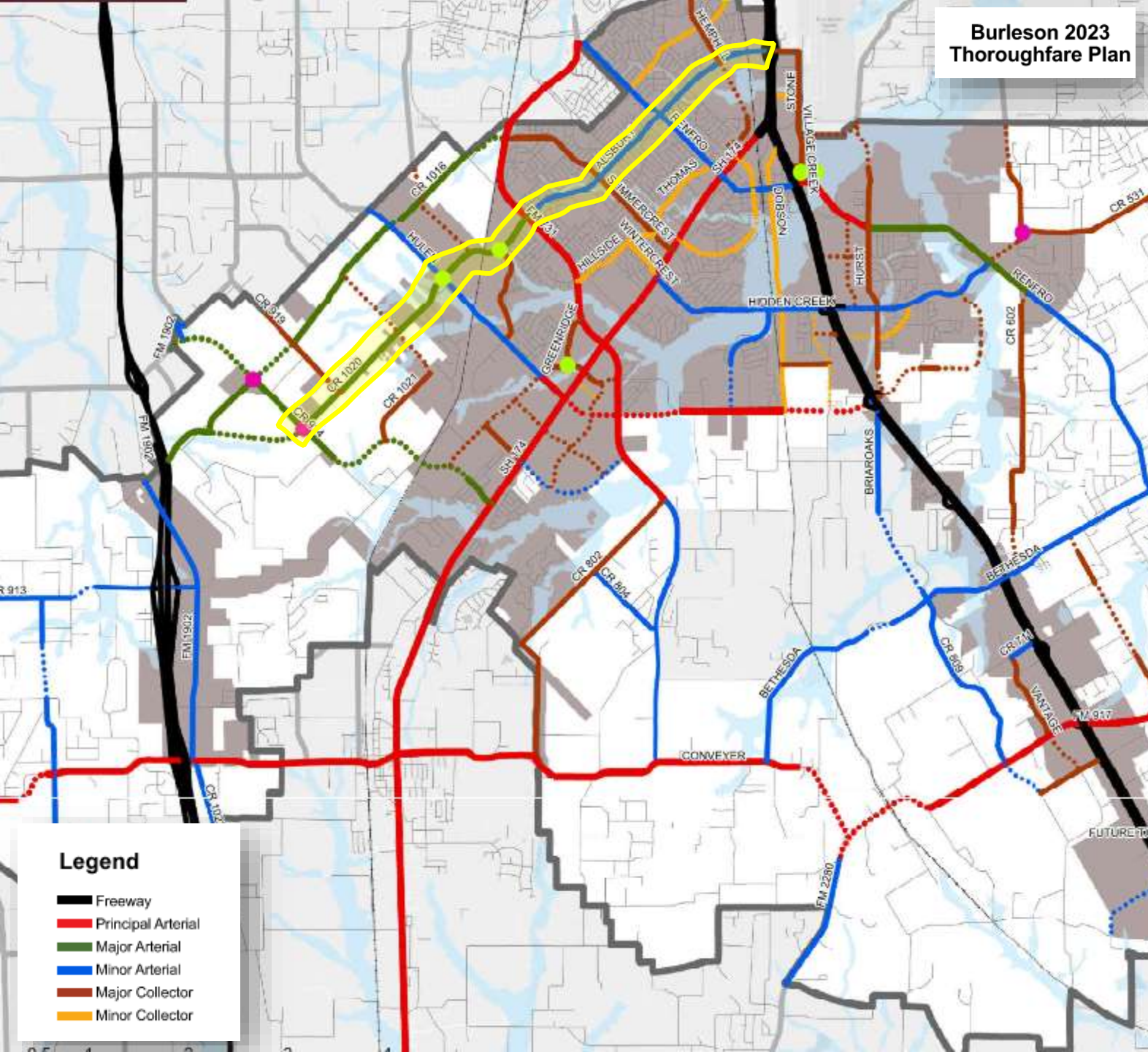
Ultimately, will provide a connection from Chisholm Trail Parkway/Lakewood Dr. to IH-35W

Additional two lanes under construction from Candler Rd to Hulen St.

Bridge connection from Hulen St. to Prairie Timber Estates

Schematic design underway from Prairie Timber Estates to CR 914 / Lakewood Dr.

Turn lane improvements included at FM 731 and Alsbury Blvd.



Legend

- Freeway
- Principal Arterial
- Major Arterial
- Minor Arterial
- Major Collector
- Minor Collector

Transportation Improvement Plan (TIP)

Construction Costs continue to increase, making funding challenging

TIP is TxDOT's 4-year capital improvement project

- Short-term programming document
- Serves to support long-range statewide transportation plan
- Projects included in TIP expected to begin construction within 4 years
- Projects eligible to be partially or fully funded

Requirements for eligibility

- Roadway has to be included in the Federal Functional Classification Systems (FFCS) as a major collector or above
- Included in the NCTCOG Mobility Plan
- Included in a TIP

Traffic study with conceptual plan and high-level costs is the first step towards discussions with NCTCOG to begin the process of requesting Alsbury Blvd. to be included in the FFCS and subsequently in a TIP program

Schedule/Deliverables

Data Collection

- NTP – December 2024
- Traffic data
- Aerial /LIDAR
- Record Drawings
- Field observations

Traffic Study

- Evaluate existing and proposed conditions
- Intersection analysis, including turn lanes
- Cost-benefit analysis

Conceptual Design

- Horizontal plan layout
- Addition of sidewalk/trail
- Typical sections
- Preliminary drainage study
- Conceptual level OPCC

Contract Completion

- May 2025

Action Requested

Approve a professional services agreement with Kimley-Horn and Associates, Inc. for \$70,000.00 to evaluate Alsbury Blvd. from FM 731 to the Union Pacific railroad crossing west of IH-35W

Staff Contact:

Michelle McCullough, P.E., CFM
Development Services
Deputy Director/City Engineer