

SH 174 WIDENING

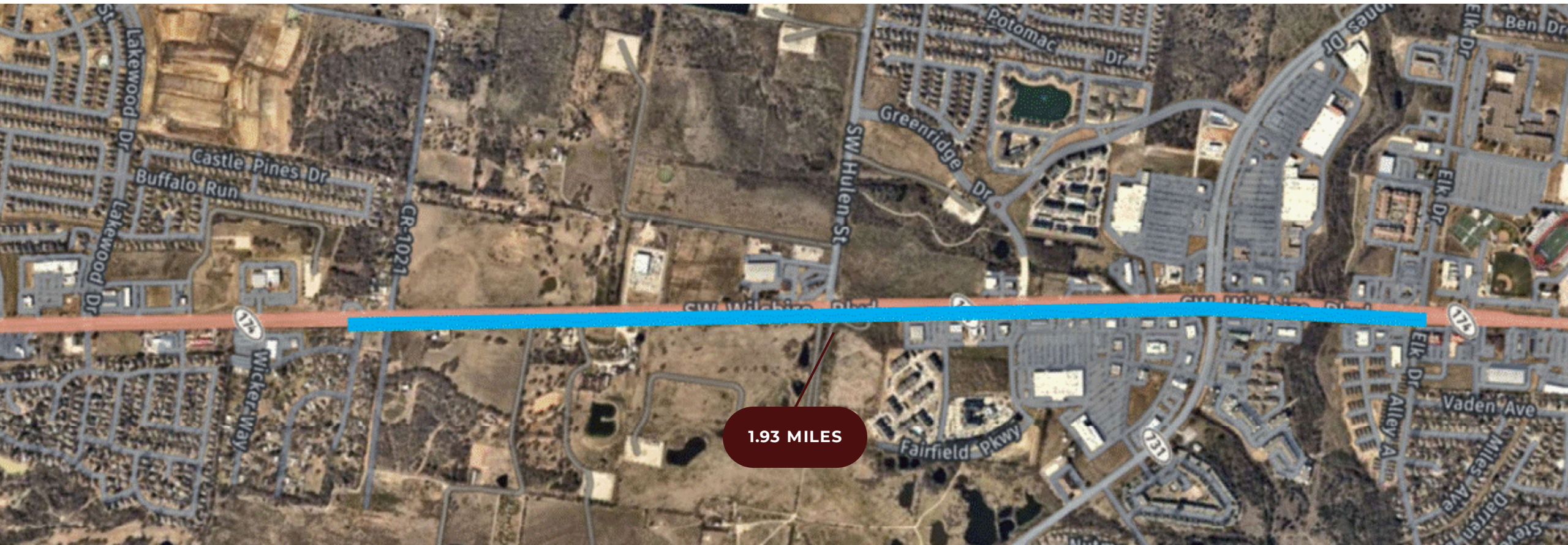
Professional Services Agreement



SH 174 PHASE 1A (SCHEMATIC & ENVIRONMENTAL)

TxDOT projects require a Schematic & Environmental process as well as PS&E (full design) process.

Schematic Design and Environmental Clearance for Phase 1 (Elk to Wicker Hill) is 95% complete (blue line).



SH 174 PHASE 1B (FULL DESIGN)

TxDOT projects require a Schematic & Environmental process as well as PS&E (full design) process.

Full design for Elk to Hulen is 90% complete (solid red line).



SH 174 PHASE 2A (SCHEMATIC & ENVIRONMENTAL)

Schematic Design and Environmental Clearance for Wicker Hill to City Limits is within the G.O. Bond in Fiscal year 2024 (yellow line).



SH 174 PHASE 2B (FULL DESIGN)

Full design for Wicker Hill to City Limits is within the G.O. Bond in Fiscal year 2026 (pink line).

Currently the overall SH174 expansion is split into two phases where the limits differ between Schematic and Environmental to PS&E (full design).



SH 174 PHASE 1B- AMENDMENT

This contract amendment (green line) would complete full design for Hulen to Wicker Hill so that construction of the entire Phase 1 can be let as a single TxDOT project.

This amendment (green line) will correct the mis-alignment and allow a longer segment of SH 174 to be widened sooner.



SH 174 IMPROVEMENTS OVERVIEW

TxDOT projects require Schematic & Environmental process (yellow and blue lines) as well as PS&E (full design) process (pink and red lines). Previously, the overall SH174 expansion was split into two phases where the limits differed between Schematic and Environmental to PS&E. This amendment (green line) will correct the mis-alignment and allow a longer segment of SH 174 to be widened sooner.

Phase 2 schematic and environmental clearance (yellow), and full design (pink) are funded in the G.O. Bond Program (FY24 & FY26).



CONTRACT AMENDMENT

Includes full design of the additional 0.68 miles between Hulen and Wicker Hill to match Schematic and Environmental Clearance limits for design fee of \$449,985.

This contract amendment accelerates a 0.68 mile portion of Phase 2 and is funded from that project's allocation in the G.O. Bond (\$1.9M). Accelerating this funding will be considered by council in the 5-year CIP update this summer.



SURVEY



GEOTECHNCIAL



DESIGN



**TXDOT
COORDINATION**

PROJECT COST DISTRIBUTION AND SCHEDULE



DESIGN

Design: Summer 2020- Early 2024

Original \$885,500 (1.25 miles)

THIS ITEM ● Amendment \$449,985 (0.68 miles)

City funded



CONSTRUCTION

Construction: Summer 2024 - Summer 2026

Estimated \$29.5M

Funded and let by TxDOT & NCTCOG

Extending design limits to Wicker Hill shifts construction by 5 months from current schedule, but would complete an additional 0.68 miles of the expansion

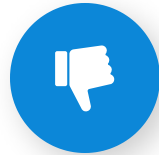
OPTIONS

RECOMMENDED



APPROVE

Approve an Engineering Services Contract Amendment with Kimley-Horn and Associates for the design of SH174 Widening project in an amount not to exceed \$449,985.00.



DENY

Deny an Engineering Services Contract Amendment with Kimley-Horn and Associates for the design of SH174 Widening project in an amount not to exceed \$449,985.00.

