

TxDOT Transportation Alternatives Call for Projects

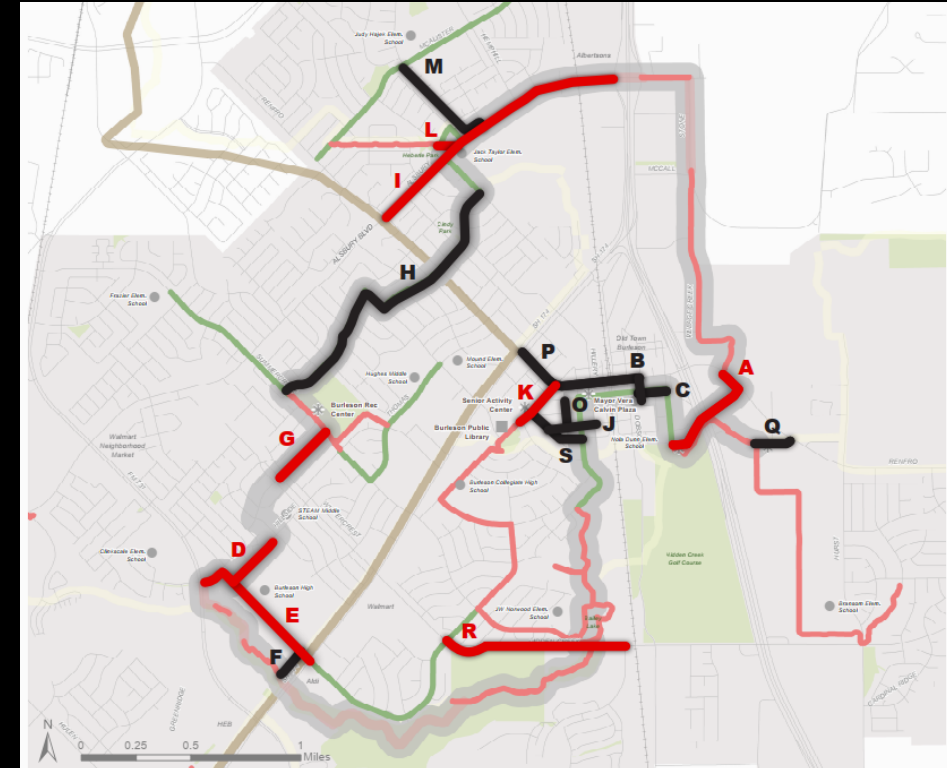


Grant application to fund completion of Burleson's 10-mile Bike Loop

TXDOT TA CALL FOR PROJECTS

- Total \$250 Million available for FY 22-25 for bicycle and pedestrian projects
- Project would complete 10-mile loop bicycle and trail route and adjacent sidewalks in the Mobility Plan as a single project
- A Preliminary Application was submitted to TxDOT on 1/27 and has been selected to continue to the next round
- The application does not commit funds, Council approval will still be required for Design & Construction contracts
- Grant would fund 80% of total project cost with City funding the remaining 20%

Total City contribution, including design, acquisitions, and construction, not to exceed \$3.2 million



Target Project

\$16 Million

City Contribution

20% Match (\$3.2M)

Preliminary Application Due
Notification of Eligibility
Detailed Application Due
Final Selection

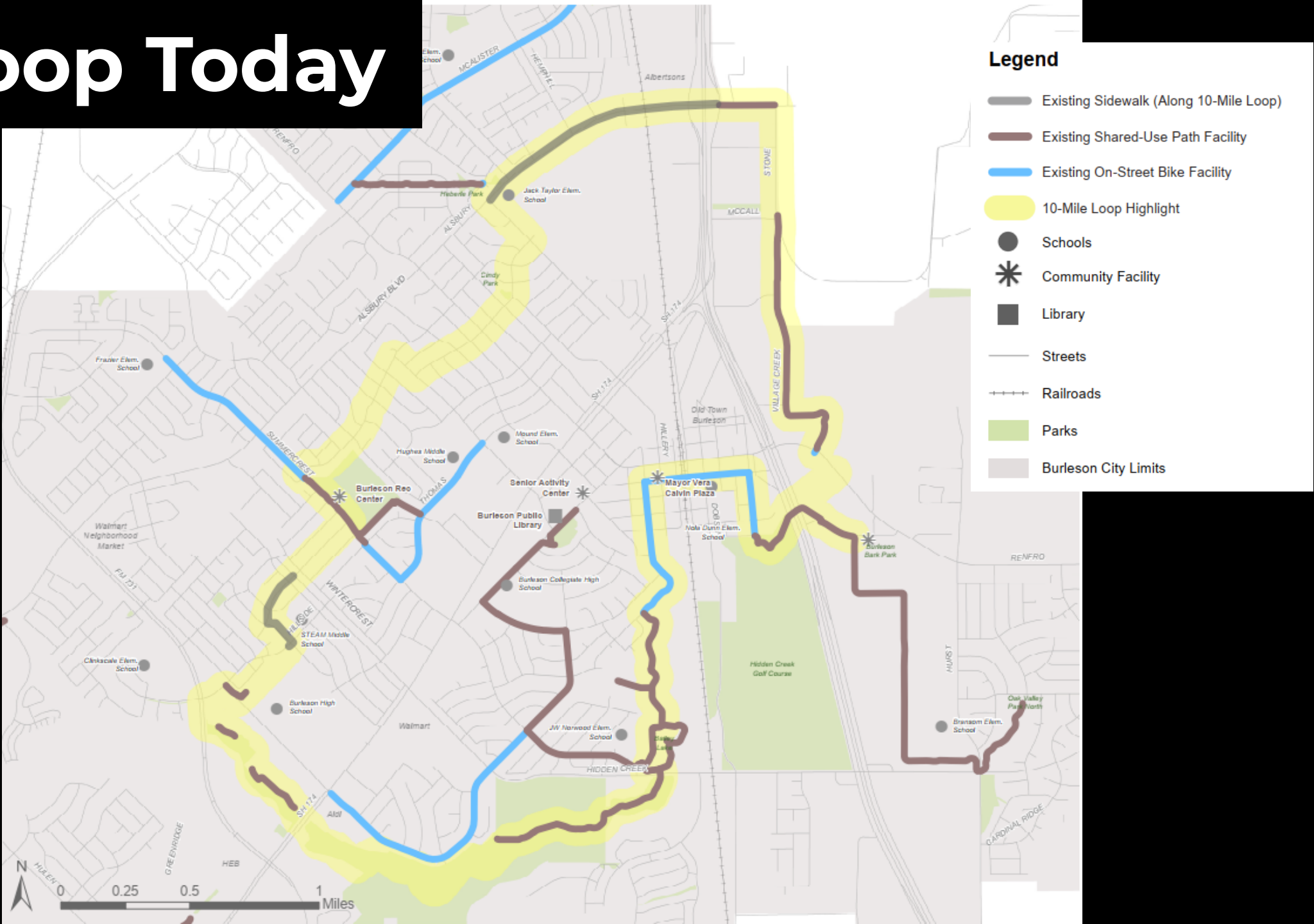
January 2023
March 2023
June 2023
October 2023

Loop Today

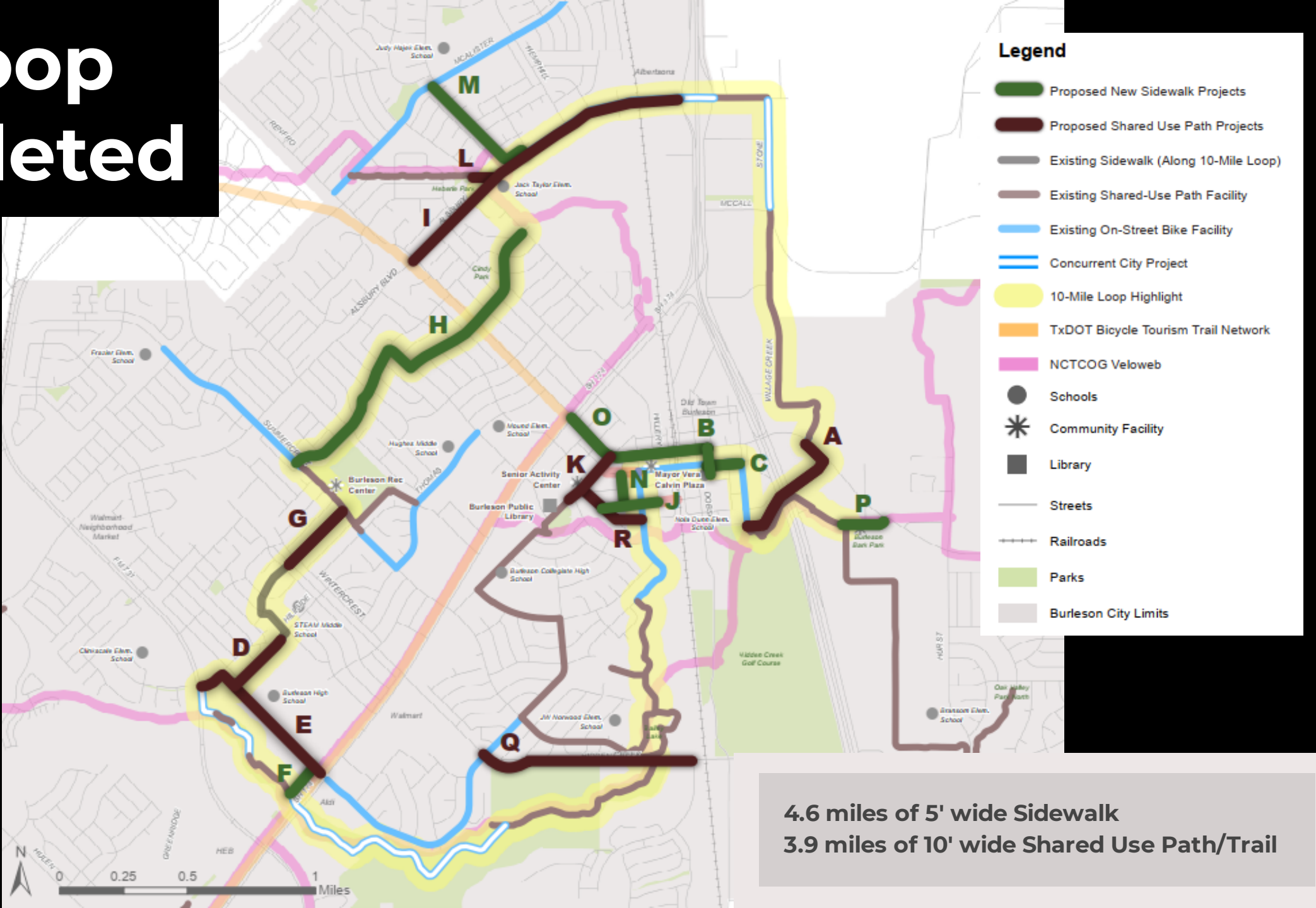
This map illustrates the 10-Mile Loop in Burleson, Texas, highlighting existing and proposed infrastructure. The loop is defined by a yellow shaded area. Existing infrastructure includes sidewalks (grey line), shared-use paths (brown line), and on-street bike facilities (blue line). The map also shows schools (black dots), community facilities (asterisk), libraries (black square), streets (grey lines), railroads (dashed line), parks (green areas), and the Burleson City Limits (light grey area). Key locations include Jack Taylor Elem. School, Mound Elem. School, Burleson College High School, Burleson Public Library, Senior Activity Center, Burleson Recreation Center, and various parks like Hidden Creek Golf Course and Burleson Park. Major roads such as Alsbury Blvd, Summerforest, and Hidden Creek are labeled. A scale bar indicates distances up to 1 mile, and a north arrow is present in the bottom left corner.

Legend

- Existing Sidewalk (Along 10-Mile Loop)
- Existing Shared-Use Path Facility
- Existing On-Street Bike Facility
- 10-Mile Loop Highlight
- Schools
- Community Facility
- Library
- Streets
- Railroads
- Parks
- Burleson City Limits



The Loop Completed



SIDEWALKS

Screening Criteria for sidewalk improvements

IDENTIFIED SIDEWALK NEEDS

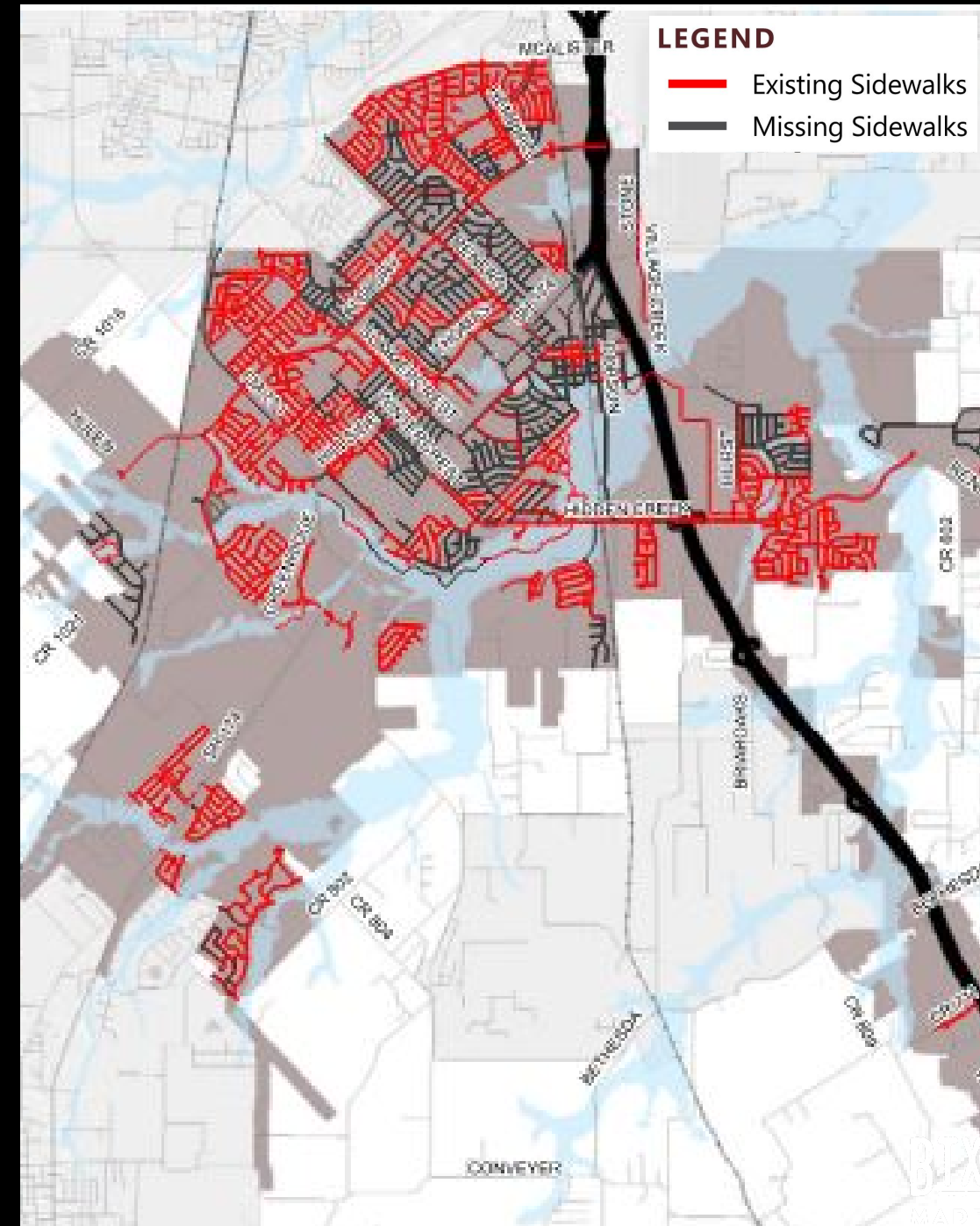
- Neighborhoods without sidewalks
- Approximately 121 miles of sidewalk needs identified
- Estimated cost to complete all missing sidewalk is \$160,000,000 {includes all construction costs sidewalk, ADA ramps, driveway adjustments, mobilization, contingency}

PEDESTRIAN SAFETY

- High pedestrian use areas where sidewalk connectivity did not exist

MAJOR CONNECTIONS TO DESTINATIONS

- Schools - coordination with school districts to determine where kids are walking from will need to occur
- Community Facilities - BRiCk, existing parks, trails, activity centers
- Old Town
- Employment Centers - commercial corridors considered important to connect to adjacent neighborhoods
- Shopping/Activity destinations



SIDEWALKS

Prioritization

SHORT - TERM

- Recommended to be completed in the next 1 to 5 years
- Pedestrian Safety
- Provide a “spine linkage” for key missing connections from neighborhood to neighborhood, schools, community facilities, etc. These are longer sections of missing sidewalk that will provide a connection short term until smaller sections of sidewalk are filled in over time completing the network in the neighborhood
- Identified as critical for the overall improvement that would positively affect surrounding neighborhoods

MID-TERM

- Recommended to be completed in the next 5 to 10 years
- Missing sections in sidewalk network begin to be filled in to create more connections between neighborhoods and destinations. These sections begin to fill in the network in neighborhood by connection more pedestrians to the “spine linkage” constructed in the short-term projects

LONG-TERM

- Recommended to be completed in the next 20 years
- Remaining missing sections within the sidewalk network continue to be constructed ultimately providing a complete overall network that is interconnected

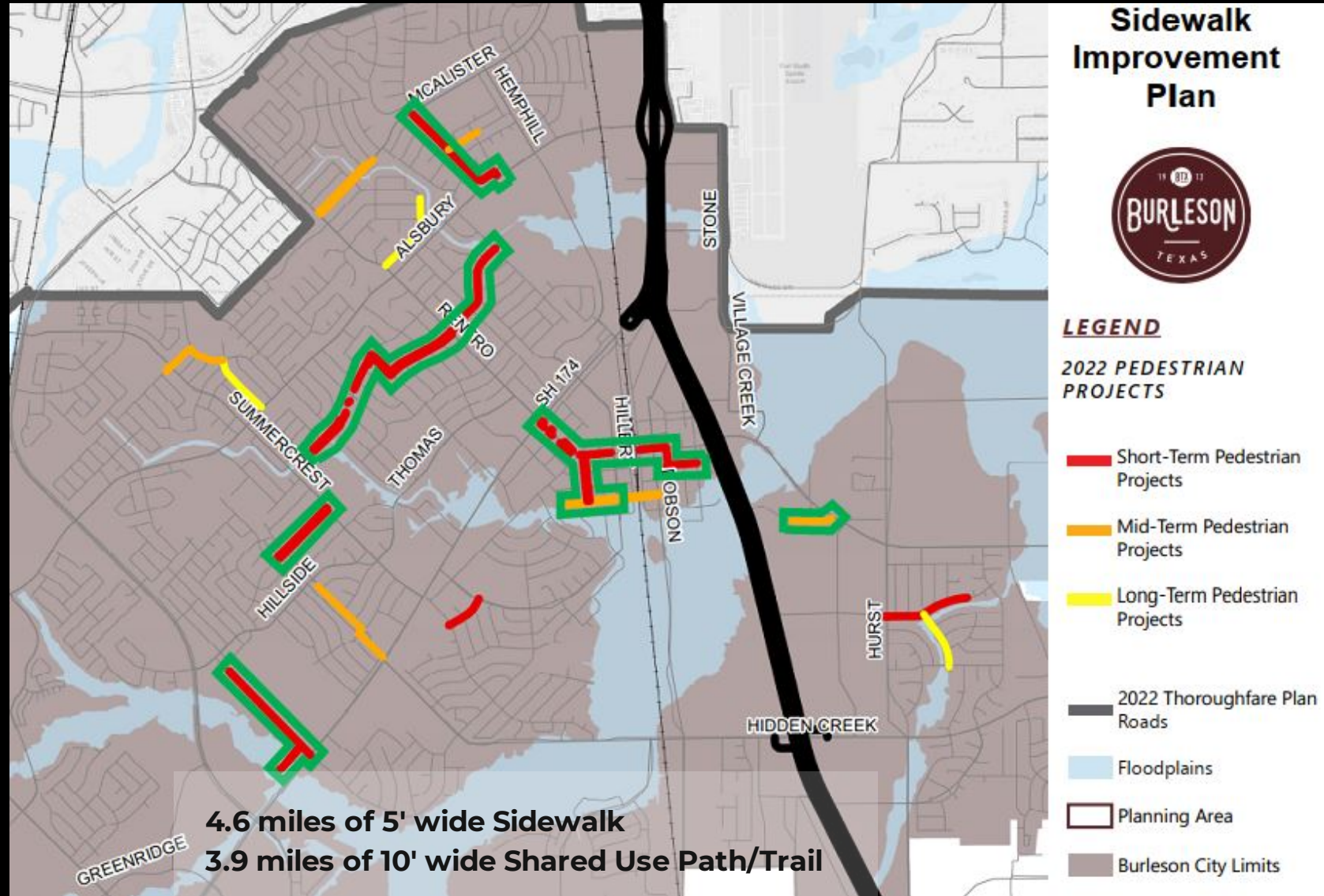
TXDOT TA GRANT'S IMPACT ON MOBILITY PLAN

This grant would complete the majority of our short-term and some mid-term pedestrian projects

- 9 of the 12 Short-Term Pedestrian Projects would be completed with this grant
 - 1 of the 3 remaining projects is within the GO Bond Program (FM1902) for FY27 completion
- 2 of the 6 Mid-Term Pedestrian Projects would be completed with this grant

Goal: Complete 10-Mile Loop bicycle and trail route and 80% of the Short - Term Pedestrian Projects with the currently planned City funding

Result: \$15.7 M worth of pedestrian, bicycle and trail facilities for \$3.2 M of City funds.



CITY'S 20% CONTRIBUTION FUNDING

- **SIDEWALK PROGRAM**

GO Bond

\$1,266,946 over 5 years for new sidewalk

Locations TBD by Council

FY23-27

- **RENFRO PEDESTRIAN IMPROVEMENT**

TIF Fund

\$192,497

FY23-24

- **ELK DR, HILLSIDE DR, & FM 931 INTERSECTION AND SIDEWALK IMPROVEMENTS**

GO Bond

Total \$1,036,509

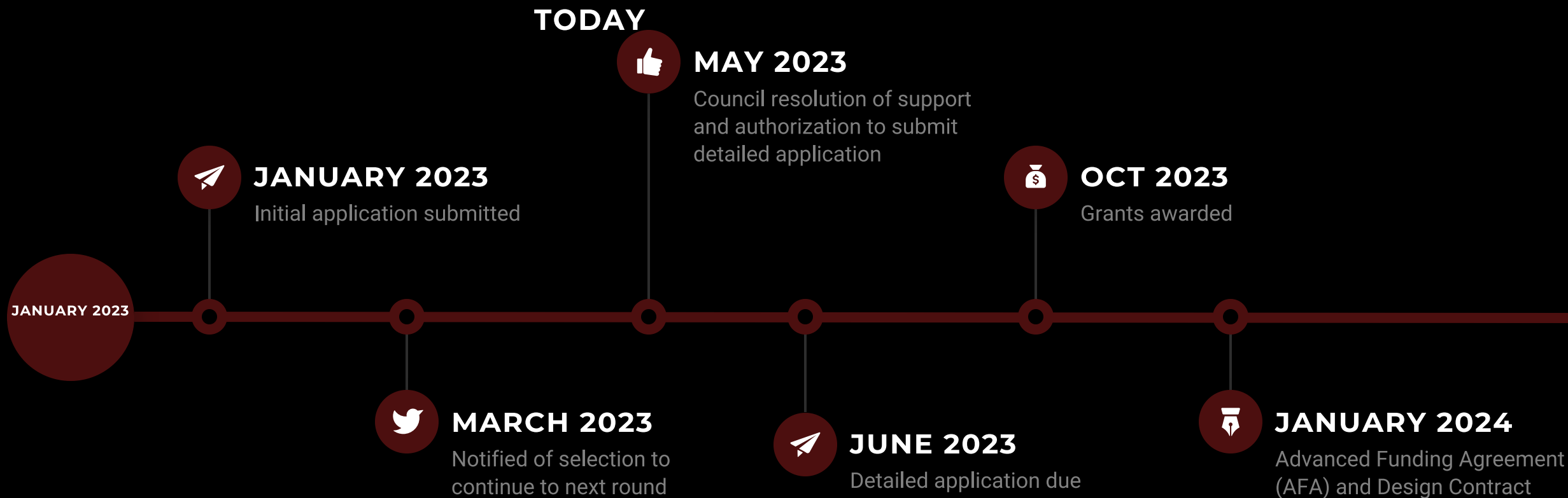
(50% for intersection improvements, therefore, sidewalk portion \$518,254)

FY25-26

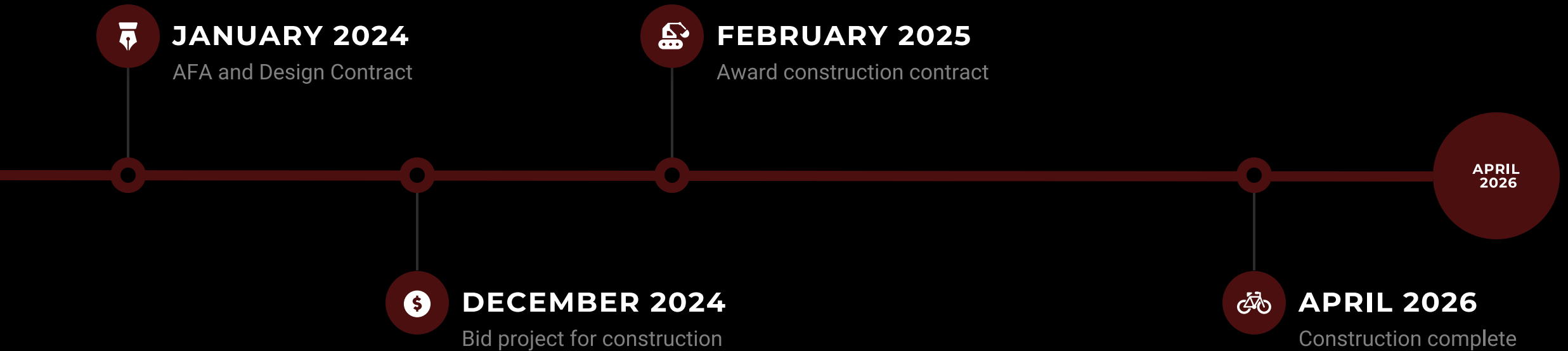
TOTAL EXISTING FUNDING \$1,977,697

ADDITIONAL \$1,222,303 FOR THE BALANCE OF THE 20% MATCH TO BE CONSIDERED BY COUNCIL IN THE 5-YEAR CIP UPDATE THIS SUMMER

GRANT APPLICATION TIMELINE



ANTICIPATED PROJECT TIMELINE



OPTIONS

RECOMMENDED



APPROVE

Approve a resolution as presented



DENY

Deny a resolution

