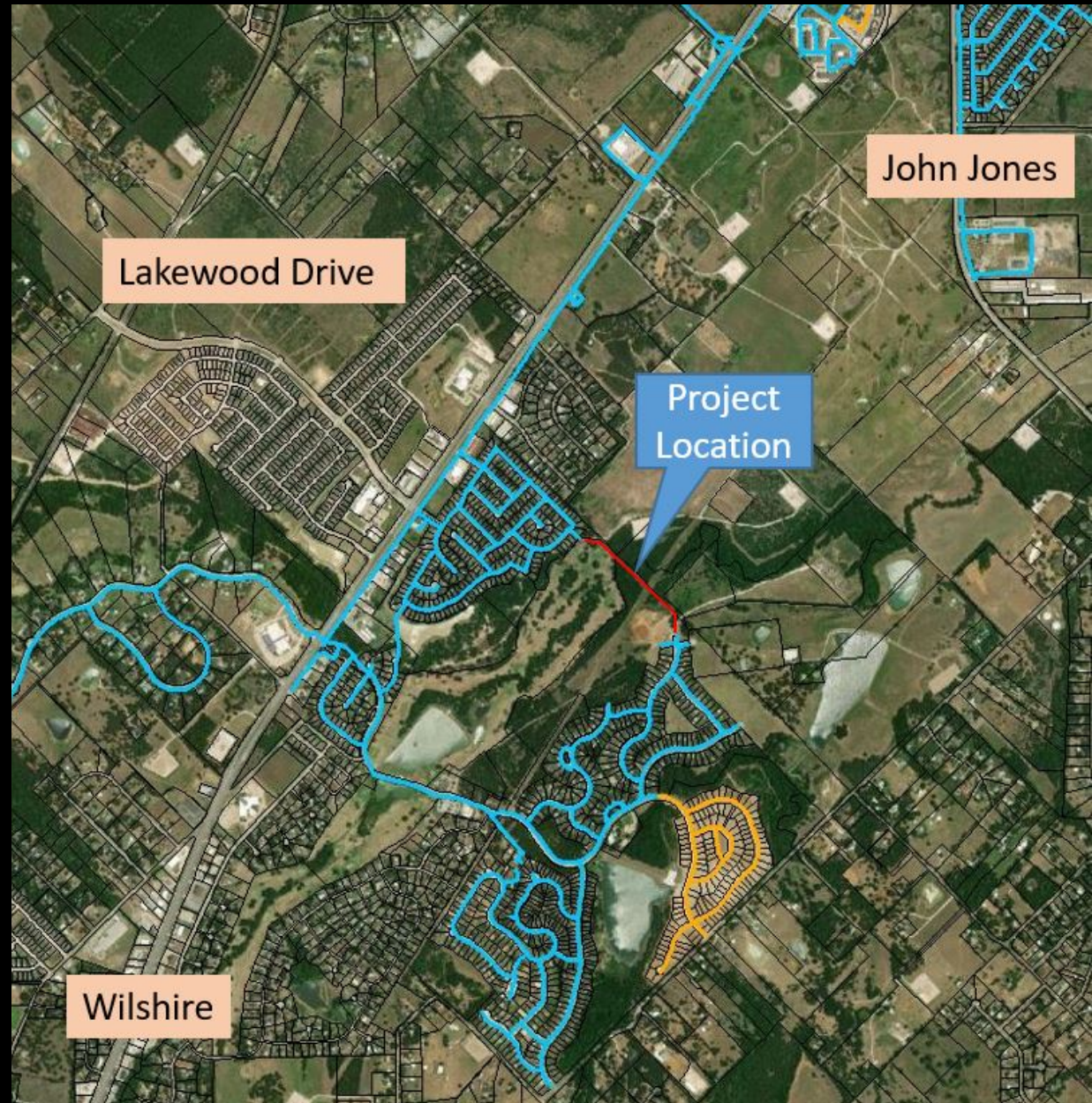


# 12-INCH WILLOW CREEK WATER LINE

---

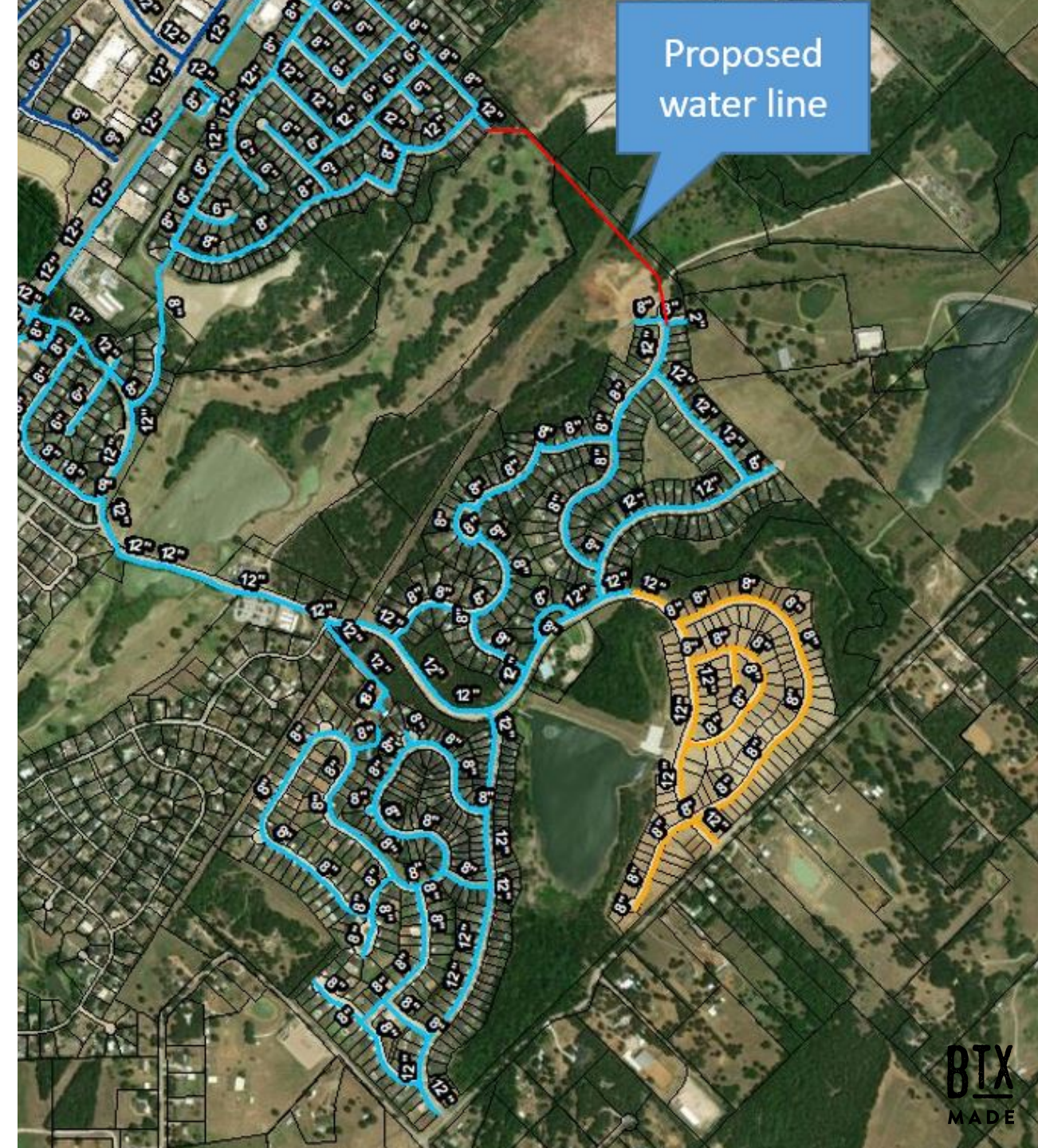
Professional Services Agreement





# PROJECT OVERVIEW

- **ENHANCES FIRE FLOW TO MOUNTAIN VALLEY LAKES SUBDIVISION**
- **CONNECTS WATER LINES OF TWO SUBDIVISIONS CREATING A LOOP THAT PROVIDES REDUNDANCY FOR BOTH**
- **RECOMMENDED IN WATER / WASTEWATER MASTERPLAN**
- **FUNDED IN CURRENT CAPITAL IMPROVEMENT PROGRAM**



# SERVICES TO BE PROVIDED

A fee proposal has been negotiated with Plummer Associates, Inc. in the amount of \$110,675 and includes the following services:



**DESIGN**



**TOPOGRAPHIC  
SURVEY**

(Spooner Associates)



**UTILITY  
COORDINATION,  
LOCATING, AND  
PERMITTING**



**CONSTRUCTION  
ADMINISTRATION**

# COST DISTRIBUTION AND SCHEDULE

Project is within the current CIP plan and proposed contract is within the budget



**DESIGN \$110,675**

Spring 2023 - Fall 2023

Also includes - environmental documentation, easements, and project management



**CONSTRUCTION \$804,357**

Early 2024 - Fall 2024

Also includes - advertising, construction materials testing, and project management



# OPTIONS

## RECOMMENDED



### APPROVE

Approve a professional services agreement with Plummer Associates, Inc. for the design of the 12-inch Willow Creek Water Line project in the amount of \$110,675.00.



### DENY

Deny a professional services agreement with Plummer Associates, Inc. for the design of the 12-inch Willow Creek Water Line project in the amount of \$110,675.00.

