

Memorandum



Date: June 30, 2026
To: Buchanan Downtown Development Authority
From: Tony McGhee
Subject: Consideration of Donation of Glisce Synthetic Ice Rink

The Buchanan Downtown Development Authority has been presented with an opportunity to receive a Glisce synthetic ice rink and related equipment as a gift. The rink was originally purchased by Bethany Church in LaPorte through a Patronicity campaign and used at the LaPorte Fairgrounds. According to the information provided, the rink was popular enough that the City of LaPorte eventually installed a real ice rink, which made the synthetic rink no longer needed. The equipment was then sold to another organization in January 2026. That organization is no longer moving forward with the rink, and the equipment has now been offered to Buchanan for free.

The email material provided indicates that the rink was approximately \$100,000 when originally purchased new. The information states the rink system is a 51.5-foot by 25.7-foot fully equipped Glisce Eco-Rink system with a skatable surface of approximately 1,330 square feet. While this is not a cash contribution, the potential value of receiving the rink and related equipment at no cost is meaningful and could provide the DDA with a new seasonal downtown amenity at a much lower entry cost than purchasing a new system.

Based on the information provided, the equipment includes the synthetic rink panels, a surface vacuum, two “whale” skate helpers for younger children, 48 pairs of skates, a skate rack, sideboards that surround the rink and could potentially be used for sponsor or advertising opportunities, curling stones, two skate sharpeners, and side rails for the curling rink. The materials also indicate that one side of the rink surface has never been used, which may help extend the useful life of the system. The current rink setup shown in the attached photos appears to be approximately 18 feet by 30 feet, with a separate curling lane option also included.

Glisce is a synthetic ice product that allows people to skate using regular ice skates without the need for refrigeration, water, ice-making equipment, or the utility costs associated with a traditional ice rink. The rink surface is made of interlocking panels that are installed on a

flat surface, connected row by row, and surrounded by dasher boards. Because the system is synthetic, it can be used in more flexible weather conditions than a traditional outdoor ice rink and could potentially be operated seasonally as a downtown activity, holiday attraction, or special event feature.

There are operational considerations the DDA should discuss before deciding where to accept the gift. The Glice manual states that the rink should be installed on a flat, clean, and smooth surface with no more than a one-degree slope and no dips or bumps. The panels must acclimate to the installation site for 24 hours before installation, and the system needs space around the edge to accommodate the dasher board feet. The system can be assembled and disassembled, but it will require staff or volunteer labor, a manager/lead, and a storage plan when not in use.

The rink also requires regular maintenance. The Glice materials states that a successful rink depends on keeping the surface clean and keeping skates sharp. Maintenance includes vacuuming, periodic polishing or cleaning, use of Glice cleaning and care products, skate sharpening, and protecting the surface from dirt, street shoes, weather, and direct exposure when not in use. The material provided notes that no conditioner is included with the equipment, but that it is available through the Glice website and is not expected to be a major expense. Glice also offers online training through the Glice Academy, including rink installation and rink management training. The manual indicates that, for a publicly used rink, warranty coverage is tied to having a Glice Academy certified rink manager.

From a DDA perspective, this could be a strong downtown placemaking opportunity. A synthetic ice rink could create a family-friendly activity, bring people downtown during colder months, support downtown businesses, provide a reason for residents and visitors to spend more time in the district, and create sponsorship or advertising opportunities through the rink boards. The curling lane could also provide an additional programming option for events, leagues, or small group activities. Because the rink would be received as a gift, the DDA would not have the same upfront capital cost that would normally come with this type of amenity.

At the same time, accepting the rink does not mean there will be no cost. The DDA would need to consider where the rink would be located, whether the location has an appropriate flat surface, how the rink would be set up and taken down, where it would be stored, who

would manage and supervise it, what insurance or liability issues may need to be addressed, how skates would be checked out and returned, whether fees would be charged, and whether the rink would be operated by the DDA, the City, volunteers, or a third-party partner. The DDA would also need to budget for cleaning products, replacement parts, possible repairs, storage, signage, staff time, and any site improvements needed to make the rink safe and functional.

Staff is not asking the DDA to make a final decision on the full operating model at this time. The immediate question is whether the DDA is interested in accepting the Glice rink and related equipment as a donated asset. If the DDA is interested, staff would recommend accepting the gift subject to final review of condition, storage needs, insurance and liability considerations, and development of an operating plan and budget before the rink is placed into public use.

Recommendation

Staff recommends that the DDA discuss whether it is interested in accepting the donated Glice synthetic ice rink and related equipment. If the DDA wishes to move forward, staff recommends accepting the gift conditionally and directing staff to complete a follow-up review of location options, setup and storage requirements, maintenance needs, insurance considerations, staffing or volunteer needs, and estimated operating costs before the rink is placed into service.

This opportunity appears to have real potential as a downtown attraction and seasonal amenity. However, the DDA should also understand that the value of the gift comes with ongoing responsibilities. If the DDA is comfortable taking on those responsibilities, the rink could become a unique addition to downtown Buchanan and a tool to bring additional activity, energy, and visitors into the district.

Attachment A: Information on Available Glice Synthetic Ice Rink

Attachment A





Glice [®] 
Swiss Eco Rink Technology [™]

Installation & Operation Guide

Glice AG Hirschengraben 33b,
6003, Luzern, Switzerland
info@glice.com / www.glice.com



Welcome and thank you for choosing Glice!

Congratulations on choosing a Glice Rink! We thank you for trusting our company and products. Our commitment to our customers is to provide an exceptional skating experience matched by outstanding customer service and support.

In addition to the present written guide we have created an online Glice Academy where you can learn all important details regarding the installation and maintenance of a Glice Rink (glice.com/academy). Please note that the Glice warranty for a publicly used Glice Rink can only be maintained if the rink is operated by a Glice Academy certified rink Manager.

The present guide pertains to our commercial skating rink products. Please read it carefully prior to installing and operating your Glice Rink. For Glice Home customers that have purchased our 10 mm products please refer to the Glice Home Rink Guide.

Regards,
Your Glice Team.



Index

Welcome	2
Index	3
Operational summary	4
Preparation	5
Installation	6
Placing the Glice Panels	6
Installation of the dasher board system	7-8
Fine tuning (Before the opening day)	9
Maintenance	10
Vacuum cleaning	10
Floor scrubber cleaning	10
Power washer cleaning	11
How to use the Glice Care liquid	11
Maintenance and sharpening of your skates	12
Disassembly	19
Storage and transport	20
Warranty certificate	21
Warranty terms	22
How to maintain your Glice Warranty	23



Operational Summary

1. Preparation

Brief your staff before installation, verify your Glice goods and make sure the rink foundation is properly prepared.

2. Installation

Position panels and install row by row. Once the surface is ready, assemble the dasher boards starting with the feet.

3. Fine Tuning

Last minute preparations before the opening of the rink: make sure all connections are secure and that all panel plugs are correctly inserted and are level with the surface.

4. Maintenance

Make sure you properly maintain your Glice Rink. To make sure your customers have the very best skating experience, regularly clean and maintain your rink. Please see the Maintenance section to learn how to maintain your warranty.

5. Disassembly

Start by removing the dasher boards and support feet. Next, punch the plugs through the back of the panel after elevating them with a wood wedge, starting at an outside corner. Placing an item such as a broom stick between the Glice panels and the ground will offer the necessary gap.

6. Storage & Transport

Store and transport your Glice panels on the pallets or pallet boxes that came with your rink. Make sure they are secured safely in storage boxes before transport.



1.) Preparation

A. Briefing of the installation crew

- The crew has to be briefed on the installation process as described in this document. It's important that the staff observes all safety instructions as described in the installation process.

B. Reception of goods

- Verify in the Packing List that all goods, parts and tools are in perfect condition to install.
- Set up all the materials close to the area designated for the rink.
- Acclimate panels before installation. The Glice panels must be exposed 24 hours (after packing is removed) to the temperature and humidity at the installation site.

C. Preparation of the ground

- The under-floor must be flat (no more than 1 degree of slope) with no dips or bumps across the installation surface. The surface must be clean and smooth so the panels can expand and contract when temperature changes occur.
- Measure and mark the 4 corner points. If available, refer to the rink layout drawing to see how all components go together. It is a good practice to install the rink on a thin layer of protective foam or plastic to protect the bottom of the panels.
- Make sure there is a space of 12,7 cm all around the edge of the panels to accommodate the dasher board feet.



2.) Installing Glice Panel

A. Placing the Glice Panels

1. Make sure that the installation is smooth and has no debris that will interfere with the panels connecting.
2. In general, the long side of the panels should be aligned with the long side of the rink.
3. Place panels one by one, taking into account the correctness of the tongue and groove.
4. Check to see the mated tongue and groove are clean. If there is any debris or dirt, remove it with a clean rag.
5. Slide the panels together so the tongue is completely inserted into the groove. The panel plug holes should be exactly aligned.
6. Using the nylon hammer, knock the panel plugs into each hole. Make sure the rounded end of the plug goes into the hole, and hammer down the flat end. Plugs must be flush with the panel surface.
7. Finish each row before starting the next one.
8. If panel installation is interrupted, make sure to always finish a complete row in order to avoid problems fitting the tongue and groove in the event of temperature changes during installation.
9. Never use broken or deformed plugs when installing a rink.

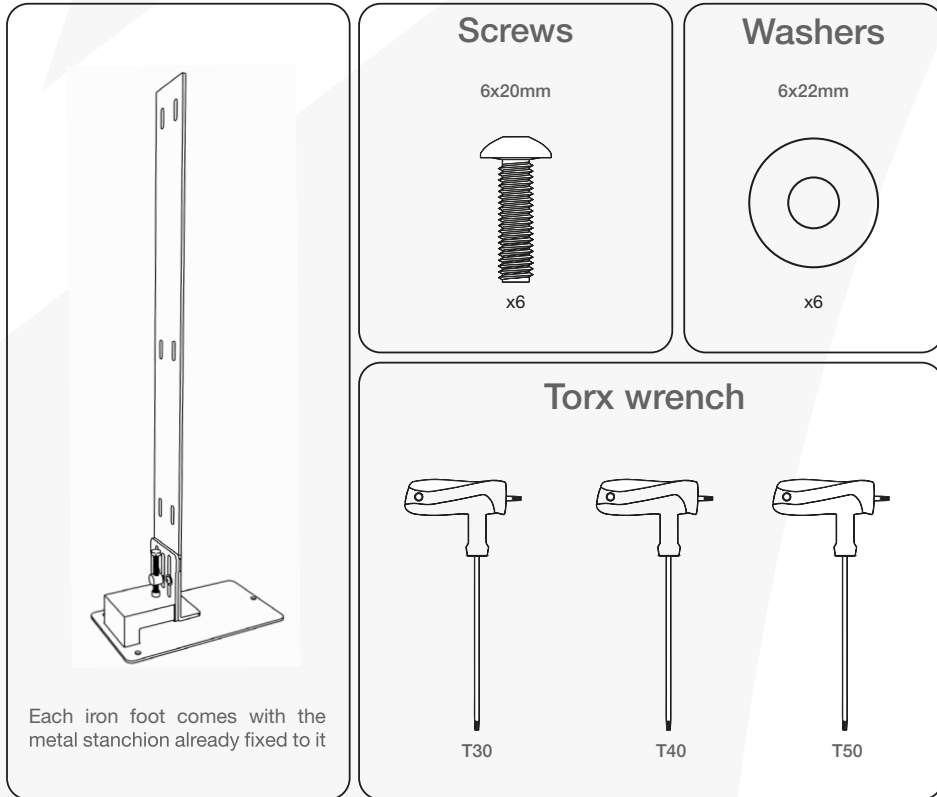


With regard to 13mm Panels please note that the Glice warranty is only offered if a maximum of 50 Glice Panels of 13mm thickness are installed as a permanent outdoor surface and a maximum of 100 Panels of 13mm thickness as an indoor surface. Concerning the installation of 20mm Panels big Glice Panel surfaces with special shapes need to be consulted with the Glice technical department in order to benefit from the Glice warranty.

3.) Installation of the dasher board system

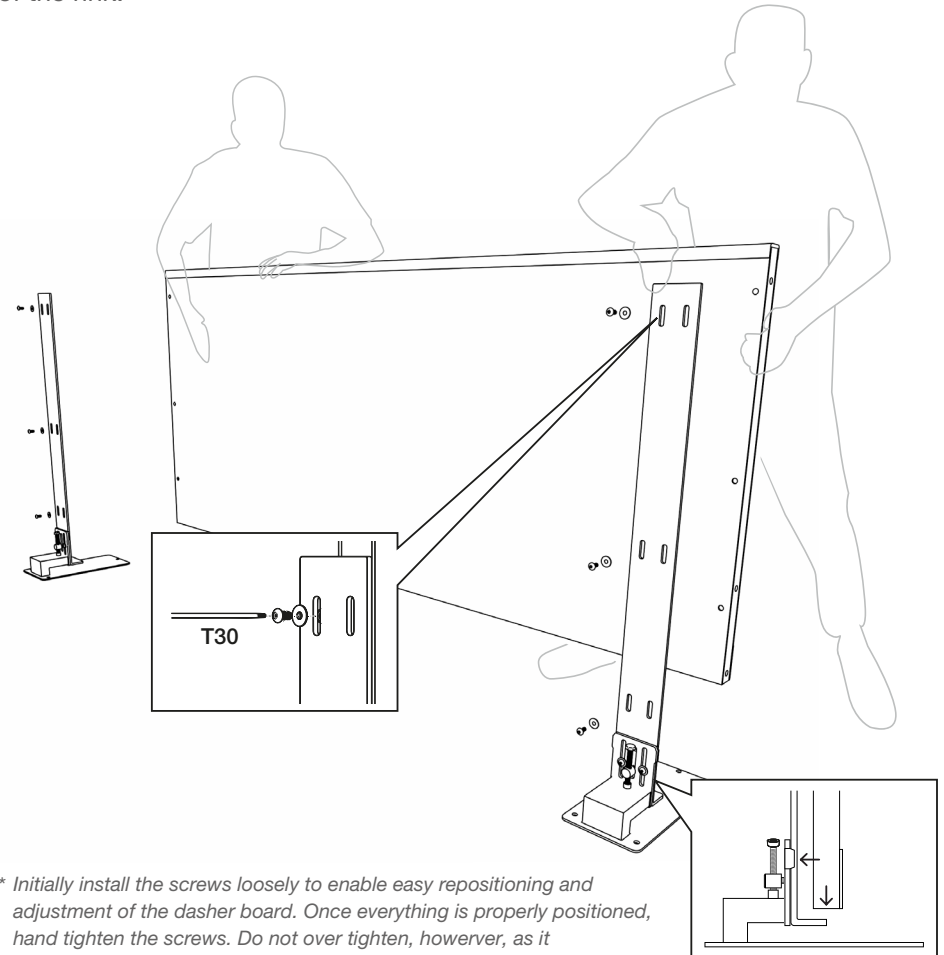
Make sure you have all of the required parts and tools before you begin the installation. If there's something missing, contact your Glice Representative.

Iron foot and hinge



Place each foot within a distance of approx. 1965 mm from each other. It is recommended to start with a corner module to make sure the feet and modules are positioned correctly. Place the dasher board module on the tabs of the iron feet with the help of an additional person. While one person holds the dasher board module, the other one fixes the hinges with the corresponding screws as shown below.

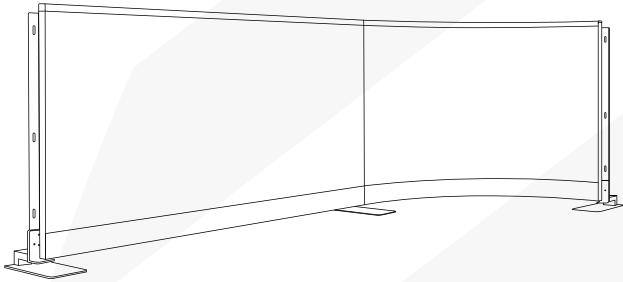
Your rink has two special modules, they need to be placed on the short sides of the rink.



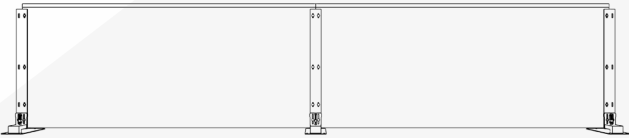
* Initially install the screws loosely to enable easy repositioning and adjustment of the dasher board. Once everything is properly positioned, hand tighten the screws. Do not over tighten, however, as it can damage the dasher board fasteners.

Panel installation process

Once the first dasher board module is fixed it should look like the picture below.



Continue with the next dasher board module, on the left or right of the first one, fixing it in the same way as the first one.



Once the dasher board modules are completely levelled and there are no more gaps in between them, tighten all the screws, first those in the iron foot, then the ones in the iron hinge starting from the top. Next, proceed to mount the next dasher board module (to the left or right) applying the same process. Do not over-tighten the screws. Hand tight is sufficient.

Placing of additional accessories

1. Place the rubber floor on the space where you put on your skates and enter the rink. Remember that every roll is 15m long and 1,25m wide. The rubber floor can be easily cut to fit the available space.
2. Prepare the skate shelves, your ticket counter and the machines used for maintenance such as the Sharpening Machine and Cleaning System.

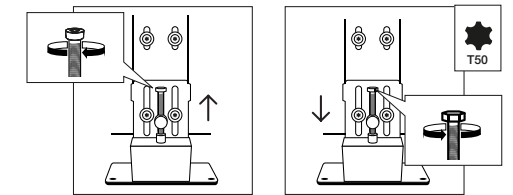
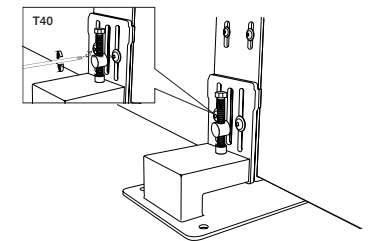
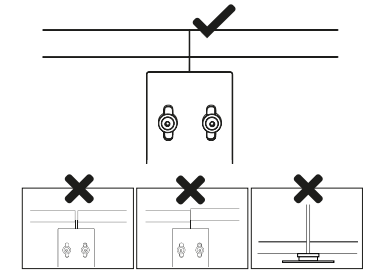
Cover your Glice skating surface with a tarp whenever it's not being used, particularly when the rink is outdoors. It is also important not to allow street shoes that can grind dirt into the surface on your Glice rink.

Leveling Process

Once the second module is fixed, check the hand railing between the two dasher board modules. If it is uneven or if there is a gap between the two modules, you need to level them.

Before starting that process, you need to loosen the screws in the iron foot which holds the iron hinge. For this, use the T40 Torx wrench.

Once all the screws in the dasher board foot and the white metal stanchion are loosened, start to level the dasher board modules by turning the big screw to the left or right wether you need to raise or lower them. To elevate or lower the overall dasher board stanchion use the T 50 Torx tool which is in the toolkit.



Turn the screw to the left if there is a gap between the dasher board modules on the lower side

Turn the screw to the right if there is a gap between the dasher board modules on the upper side

4.) Fine Tuning (before the rink opening)

In order to operate a Glice rink successfully, we recommend that you appoint a rink manager who can be certified with our online learning program. Please contact your Glice representative to provide that service. Here are some important steps to consider prior to opening your Glice rink:

- Make sure your staff are trained on all steps required to properly maintain and safely operate your Glice Rink. This training can be offered by your rink manager who has completed the Glice training and received a certificate.
- Before opening, the rink manager needs to go through the Practical Training Checklist together with a Glice supervisor or representative.
- Verify that the panels are properly connected (without gaps) and that all plugs are in place for every hole and are all flush with the surface. Periodically, check to make sure all of the plugs remain flush.
- Prior to opening the rink, it is important to make sure there is no debris on the surface and it is perfectly clean. If necessary, use the Glice Rink polisher with plain water to clean a new surface. of any surface dirt. After drawing the rink mist on a thin layer of Glice Care.
- Glice skates must be sharpened before opening, and their sharpness must be maintained during rink operations. When skates are checked in, their edges should be inspected with a Glice Edge Checker to determine if they need sharpening. Your rink manager will be fully trained in sharpening procedures.
- Before opening, make sure that your operating procedures are well understood by staff members. This includes admission, ticketing, obtaining waivers, checking skates in and out and paying attention to how successful skaters are on the rink. Staff should also have first-aid kits available and be trained in their use.



5.) Maintenance

Keep in mind that only a well-maintained and properly cared for rink offers the very best skating experience. The two most important principles to follow for operating a Glice rink successfully are to maintain a very clean skating surface and insure that skates are always sharp.

	<i>Indoor</i>	<i>Outdoor</i>
Low Use	Daily - Vacuum cleaning Weekly - Rink Polishing Yearly - Power washing	Daily - Vacuum cleaning Bi-weekly - Rink Polishing Monthly - Power washing
Heavy Use	Daily - Vacuum cleaning 2x Week - Rink Polishing Monthly - Power washing	Daily - Vacuum cleaning (2x) Daily - Rink scrubbing Bi-monthly - Power washing

Glice Vacuum Cleaner or Sweeper Cleaner

Before polishing the floor, dust, particles-shavings, etc, have to be removed by using our Glice vacuum cleaner. For bigger surfaces, use our Sweeper Cleaner. Please dispose of any plastic shavings or particles in a bag marked as “polymers for recycling” and place it in a recycling waste bin.

Glice Floor Polishers

- Using the Glice Polishers will help remove dirt that penetrates the connections between panels.
- Fill up the tank with plain water and activate the polish/vacuum function. Clean/dry the complete surface.



Maintenance of battery-powered cleaning machines:

The batteries need to be charged at least every three to four weeks (even during periods when the rink is not in use). Always follow the instructions in the manuals of the machines.

Protect the Glice Surface

The Glice surface requires protection from temperature swings and direct sunlight with a cover, roof, or tarp when not in use to prevent damage. A tarp will also prevent dust which will reduce cleaning cycles.

UV Protection

To uphold the Glice Warranty for outdoor rinks, it's necessary to provide sun protection starting at a UV index* of 6 when the rink is not in use, achieved through shading like a tent or tarp cover.

*As a reference for UV measurements, use the app "The SunSmart Global UV", available free of charge at Apple App and Google Play stores.

Temperature changes

Glice panels respond to temperature changes by expanding or contracting. To protect them, use a tent or tarp to cover the rink when temperatures fluctuate more than 15° Celsius per day.

Panel maintenance

In addition, a well-maintained panel (applying Glice Care) offers protection against the effects of UV radiation. The correct maintenance following our manual is mandatory in all climate conditions.

D. Glice Power Washer Cleaning

Occasionally after heavy use and in environments with more dust and debris, we recommend utilizing our Glice Power Washer with an integrated hot water boiler for deeper cleaning. There are generally two ways of doing this:

- Disassemble your Glice Rink and clean the panels one by one in an outdoor place.
- Use the Glice Power Washer directly on your Glice Rink. In case your rink is indoors, make sure you have sufficient drainage that will not damage adjacent areas of the rink. Use the Glice Polisher to vacuum excess water!

E. How to use GliceClean and GliceCare solutions.

- Applying both solutions is recommended to maintain the functionality of your rink and achieve rink success over time. Using both Glice Clean and Glice Care solutions is a condition in the warranty of the surface.
- Make sure you have vacuumed your surface before applying both solutions. Walk on the surface with socks or shoe protectors.
- Dilute 5% of the Glice Clean Solution in water and put it in the deposit of the Glice Fogger. Spray the Glice Clean mixture on the surface and leave it there for at least 15 min. before cleaning with the Glice Polisher.
- Once you have dry cleaned the rink with the Glice Polisher, finish off by spraying a thin layer of 100% Glice Care with the second fogger. This will enhance the gliding experience. Your Glice rink is clean and ready to skate!
- **RECOMMENDATION:** The online Glice rink manager certification training provides detailed instruction on how to maintain the Glice surface and can train other staff members. Contact your Glice representative for more information.



F. Maintenance and sharpening of your skates

- For the best skating experience, skates must be sharpened regularly.
- The frequency of sharpening will depend on how well the Glice Rink is maintained, the skating session times, the weight of the skater, etc.
- Each time rental skates are returned, their blade should be checked with the Glice Edge Checker on both sides of the hollow for sharpness. See the information sheet or videos available for how to use this tool.
- Glice has provided an automated sharpening machine that was developed to provide accurate sharpening with a minimum of effort. Periodically the sharpening wheel must be replaced after a large volume of blades are sharpened. The sharpening machine was developed to give you the best result with minimum effort.
- For more information on the usage of the sharpening machine please take a look at the corresponding section in the manual.

Note: Read the operating instructions carefully before use. Operations that are not in accordance with the manual and/or disregard safety instructions may damage the machine and/or result in serious personal injury. Improper use of the sharpener may also invalidate its warranty.

Use and sharpening of figure skates:

Figure skates have toe picks, and when used in certain jumps it can gouge the Glice surface. Toe picked jumps are not allowed on the rink. Such gouges are not covered by the Glice warranty, but may be repairable. Contact your Glice representative. Figure skates can be sharpened with the Glice Sharpening machine by following this procedure:

- a) Before sharpening, apply a toe picks protector over the pics so they are not ground down.
- b) Use a special grinding wheel (60 mm instead of 100 mm). Contact your Glice representative to order these items which are not included in the standard sharpener package.



ProSharp Sharpening Machine Parts

1. Clamp Handle
2. Vacuum Hose Connection
3. Start/Stop Button
4. Power Inlet (On/Off)
5. Lid for Grinding Wheel
6. Grinding Wheel
7. Grinding Wheel Lock
8. Adjustment Screw
9. Locking Screw
10. Wheel Pressure Adjustment
11. NEW: Digital Cycle Counter
12. NEW: Interior Grinding Wheel safety system



Technical Data

- Power: Power supply unit 150W, 12VDC or 15VDC, 10-15AMPS
- Weight: 32.6 lbs (14.8 kg)
- Width: 8.6" (220 mm)
- Length: 27.5 " (700 mm)
- Height: 12.6" (320 mm)

ProSharp Sharpening Steps and Settings

1. Sharpening of skates

- Clamp the skate into the middle of the skate holder, always with the heel of the skate placed towards the grinding wheel.
- Choose the sharpening cycles from 1 to 5 by quickly pushing the start button. One button push initiates one back-and-forth cycle of sharpening. Press the button multiple times for multiple cycles of sharpening as necessary. We recommend doing 2 cycles per skate! Sharpening is finished when the wheel is back in the start position and the motor has stopped.
- Check the sharpening result on the skate blade with the Glice Edge Checker. If the blade is still dull, repeat the sharpening process.
- RECOMMENDATION: The online Glice Rink Manager Certification training provides detailed instruction on how to maintain sharp skates and can train other staff members. Contact your Glice representative for more information.

2. Emergency stop of Sharpener

- Push the start button once when the motor is doing the first half-cycle (going to left). Sharpening will stop and the wheel comes back to the home position.
- One push after the first half-cycle (going to right) resets the counter and takes the wheel back to the start position after the cycle is finished.
- Two pushes after the first half-cycle will stop the sharpening process and takes the wheel back to home position.

The Glice sharpener works for all types of skates. However, we use a grinding wheel with a specific hollow which is better for skating on Glice. This means visitors who bring their own skates for sharpening should be informed previously if they are used to skate on natural ice.



3. Changing the grinding wheel

- Changing of the grinding wheel should be done only when the power cord is disconnected.
- Open the grinding wheel door; release the grinding wheel thumb-screw by turning to the left. Remove the wheel and replace it with another one. Return the thumbscrew and tighten it gently by turning to the right.
- We recommend using the grinding wheel provided with the sharpening machine, which will produce the ideal hollow for skating on Glice synthetic ice.

4. Adjusting the grinding wheel sideways

- Adjust the grinding wheel in small steps, 1/8 (15 degrees) turn of the wheel at a time.
- An easy way to position the grinding wheel is to first drive the wheel to the left, so you get more room to adjust the screw. To do this, push the start button for five seconds and keep the button down. The wheel will start to go to the left without grinding. Once you let go of the start button, the wheel will stop.
- If you want to place the wheel even further left, push the button again for five seconds and repeat the previous steps. Push once more and the wheel will come back to the home position.
- Adjusting the grinding wheel can be done by screwing the adjustment screw. Clockwise moves the wheel towards you and the other way moves the wheel away from you. The adjustment screw can be found beside the grinding wheel, see picture on p.13

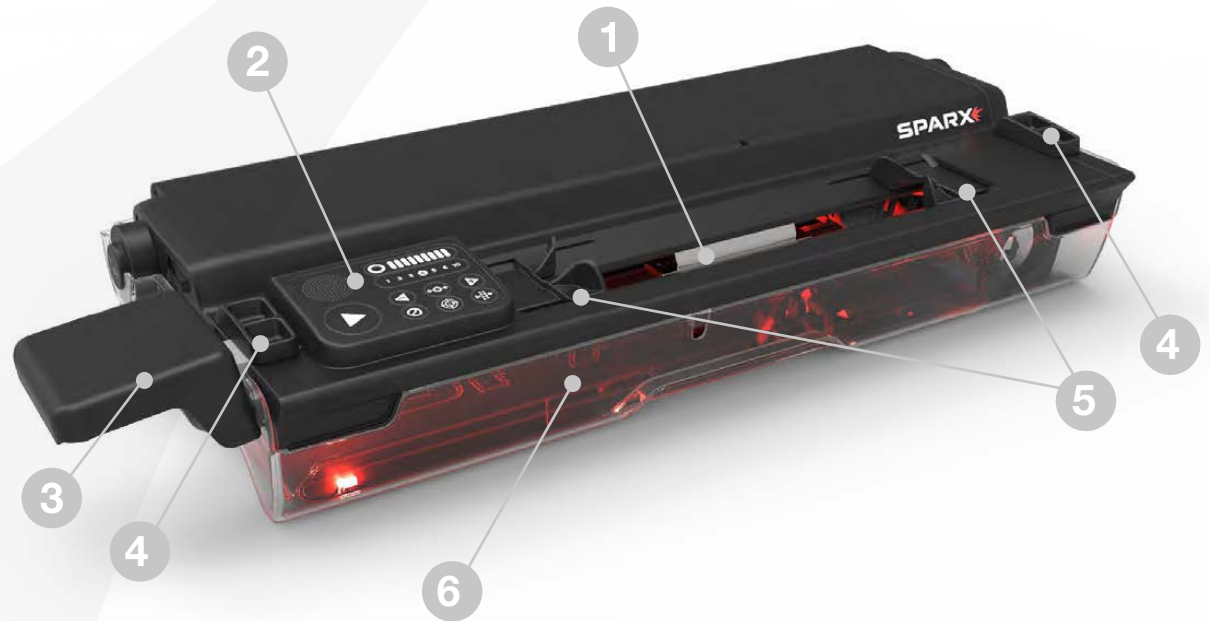
5. Maintenance

- After sharpening, unplug the power cord. Clean the machine of metal shavings with the Glice Vacuum Cleaner.
- Every wheel lasts around 2000 cycles. Change the grinding wheel according to the instructions. It is worn out when it is no longer taking away material from the steel and/or gives an unsatisfactory result. You will know when to change the wheel because the automatic counter outside the sharpening machine will show 2000 cycles.
- After 1-3 years of usage, or around 10,000 cycles the Glice Sharpener should be serviced by an authorized technician in order to maintain your warranty. Contact your Glice representative to arrange this service.



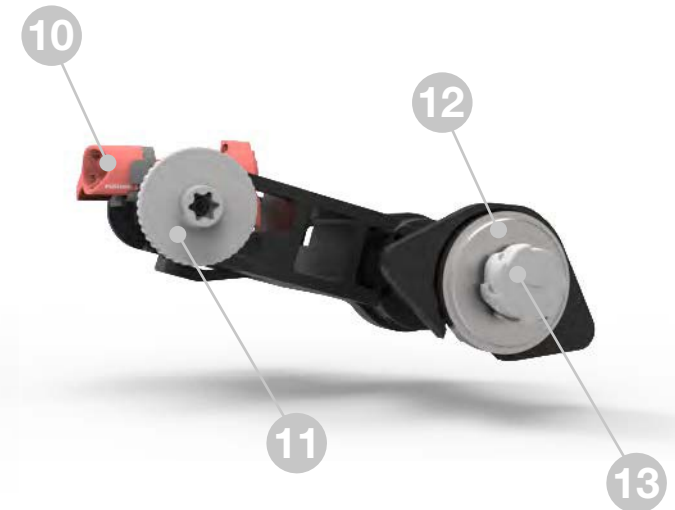
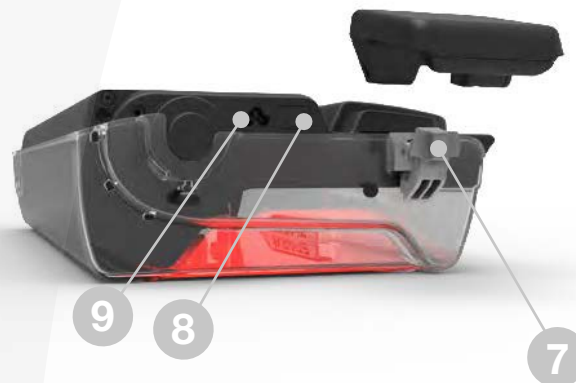
Sparg Sharpening Machine Parts

1. Skate Clamp
2. Keypad
3. Clamp Lever
4. Triggers
5. Slot Covers
6. Sharpener Base
7. Lever Dock
8. Power Switch
9. Power Input Port
10. Height Adjustment Knob
11. Alignment Adjustment Driver Slot
12. Grinding Ring Arbor
13. Thumb Nut



What's in the box:

- Travel Guard
- Power Cord
- Goalie Risers (2)
- Optical Alignment Tool
- Alignment Ring
- Clamp Lever
- Alignment Driver



Sparx Sharpening Steps and Settings

1. Sharpening of skates

- Once you have loaded the skate, closed the Slot Covers, and adjusted the height of the Grinding Ring, you are ready to begin sharpening.
- Press the Play Button. Once the button has been pressed, it will change from white to blue and the sharpening process will begin.
- Upon pressing the Play Button, the Air Filter fan and grinding motor will turn on. The Cycle Counter will flash with the current cycle number until that cycle (out and in) is completed. The sharpener will continue to run until all cycles have been performed.
- At the completion of the final cycle, the end of sharpening is marked by a “cycle complete” tone and the case LEDs will turn green. The fan will continue to run for an additional 30 seconds after the final cycle completes.

2. Additional cycles

- If additional cycles are desired, you can reset the cycle count and press the Play Button again.

If the Grinding Ring skips when it first makes contact with the blade, the Grinding Ring's height is too high. When properly set, the Grinding Ring should make a smooth transition onto the skate blade.



Sparx Sharpening Steps and Settings

3. Unloading of skate

- Disengage slot covers. Move both Slot Covers away from the skate.
- Press and hold down the Clamp Lever to open the Skate Clamp. Remove the skate from the Skate Clamp and release the Clamp Lever.

4. Edge Deburring

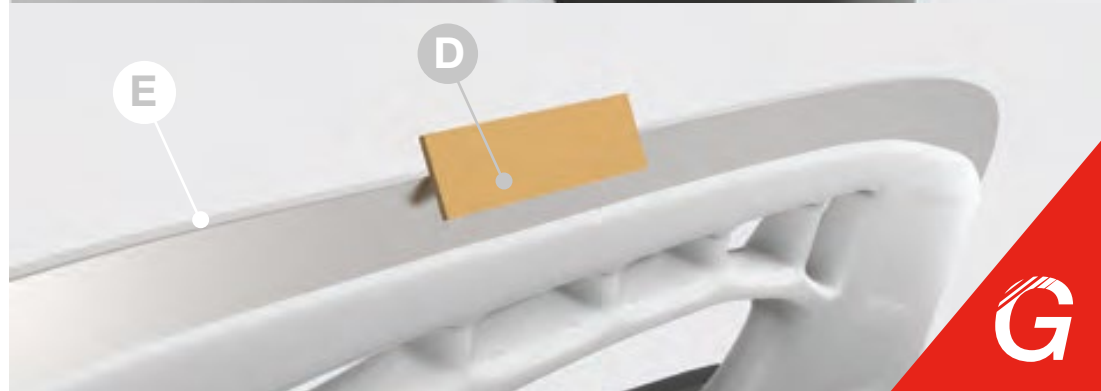
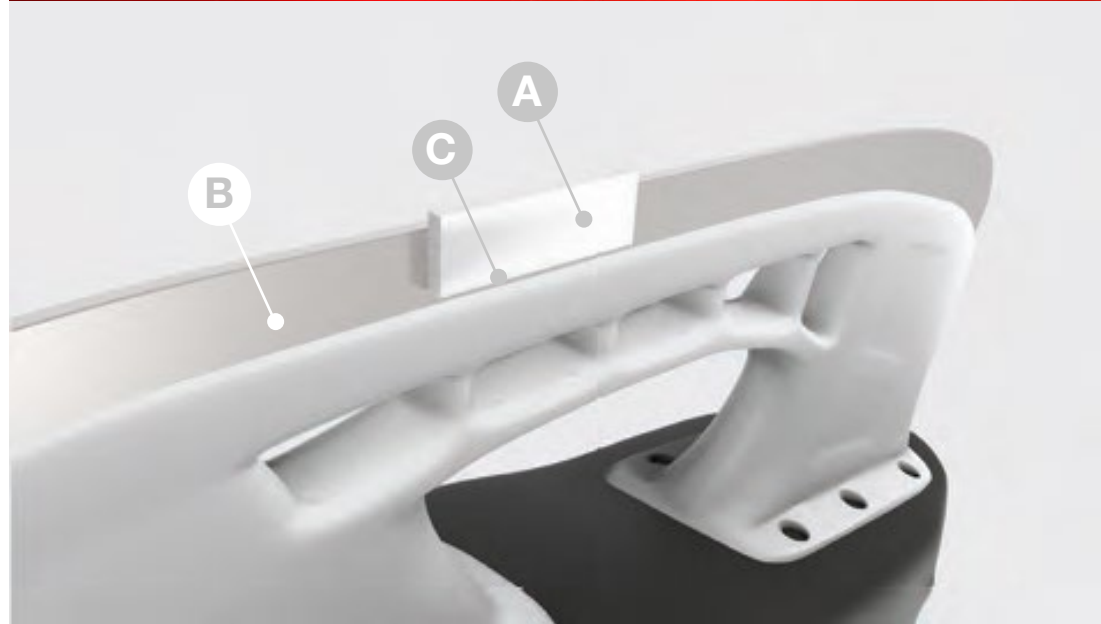
- Press the Honing Stone (A) against the face of the skate blade (B). Do not put pressure on the side of the stone closest to the blade edge. With light pressure, press down on the lower side of the stone (C) and slowly run the stone back and forth along the length of the blade for four full passes. Repeat on the opposite side.
- Press the Leather Strop (D) against the edge of the skate blade (E) at a 45 degree angle. With light pressure, slowly run the strop back and forth along the length of the edge for four full passes. Repeat on the opposite side.

When deburring coated steel, make sure to only use the Leather Strop to ensure you do not remove or damage the coating.

We recommend using protective gloves when deburring the skate blade.

5. Powering off

- On the side of the sharpener, locate the Power Input Port.
- Toggle the Power Input Port switch to the off position (I=on,0=off).



6.) *Disassembly*

- Disassemble the dasher boards one by one. Start by removing the screws and plates. Make sure to hold the dasher boards to avoid them falling off of the feet while the screws and plates are removed.
- Remove the dasher board feet and metal plates from under the panels.
- Disassemble the panels starting from one corner and following the row to the end.
- To disconnect the panels themselves, lift them about 1 inch or 3 cm and place the Glice installation tool or another object of this dimension (i.e. a smooth wooden pieces) along the panel sides. Then you can remove the plugs with the Glice punch and hammer.
- Going panel by panel, continue to remove the plugs and slide the panels apart so they can be retrieved and stored. Do not bend the panel and force a different angle to the connections of the surrounding panels while removing it. Otherwise, the tongue and groove connection and holes could be damaged.
- Repeat these steps until every panel is free and ready for removal from the site. it is helpful to have storage pallet boxes or pallets nearby to stack the panels.
- If you plan to set up the rink in the same configuration again, we recommend numbering the tongues of the panels. This will help you identify their correct positions for future use.



7.) Storage and transport

- It is recommended that you store the panels and dasher boards on the pallets that were used for delivery.
- For safe transportation, make sure that all parts are fixed and attached well. The panels are very slippery, so never transport a pallet without appropriate packaging and attachment.
- Never store more than two pallets on top of each other.
- Panels and pallets are heavy, so make sure you take all necessary safety precautions for you and your staff.
- Always protect the panels from UV exposure by covering them with a dense dark foil or tarp which blocks UV rays.

Pallet box

Our pallet boxes are made of steel to make sure that the panels and dasher boards are perfectly protected. They can be purchased as an option.

1. Take into account that the panels expand and contract with temperature changes. Therefore, loosen the screws of the pallet boxes during the storage period. Remember to fix them again before moving or transporting the pallet boxes.
2. Cover the Glice products which are stored within the pallet boxes so they stay clean and dry.



Glice limited warranty terms

1. GLICE PRODUCTS FUNCTIONING

The Glice Panels, dasher boards and accessories (henceforth the “Product”) are manufactured for their final use from raw materials, semi-finished and finished products of the highest quality.

Except as stipulated in Clause 2, the Product has a 12-year warranty (on 20mm Panels), a 6-year warranty (on 13mm Panels), a 5-year warranty (on 10mm Panels), a 3-year warranty (Sharpening Machine), a 2-year warranty (Dasher boards), a 3-year warranty (Eisstock Lane with 20mm Panels), a 2-year warranty (Eisstock Lane with 13mm Panels) or a 1-year warranty (all other Accessories) covering manufacturing defects counting from the date of delivery of the Product (henceforth the “Warranty”). This Warranty is only valid as long as the Glice Product is installed, maintained and used according to the procedures described in the Glice Manual and under the condition that the purchase is registered in the [Glice warranty database](#). This Warranty is non-transferable and extended only to the original purchaser of the Product.

2. REPAIR OR REPLACEMENT

For this Warranty to be valid and executable, Glice must be notified in writing of any defective Product within 15 days of the time such defect is discovered. Such notification must be accompanied by dated proof-of-purchase and a photograph sample of the defective Product. If any Product covered by this Warranty does not function as warranted, if the failure is not included in the list of exclusions in Clause 3, and if Glice deems the Warranty to be applicable, Glice will at its sole discretion and subject to each individual case: (i) repair the Product; (ii) replace the Product; (iii) return the amounts paid by buyer terminating the purchase agreement; or (iv) reduce the price of the relevant invoice.

The expenses caused by the execution of this Warranty (transport, uninstallation and reinstallation etc.) will be borne by the purchaser. In no event shall Glice be liable for costs or fees associated with uninstallation, reinstallation or transports to replace the defective Product. The value of the Product to be replaced shall be calculated on the base of the time the Product has been used by the owner prior to the defect or damage.

3. WARRANTY EXCLUSIONS

The Warranty does not cover, among others, the following:

- a) Breakdowns and malfunctions of the Product caused by defective assembly, improper use, inadequate handling, negligent storage or failure to perform adequate maintenance
- b) Damage caused by external causes such as acts of nature, or damage caused by civil disturbance, including, but not limited to war, flood or fire.
- c) Ordinary wear and tear of the Product
- d) Damage caused by accidents or modification of the Product without Glice’s prior written consent

The list above is not exhaustive, as other issues may not be covered by this Warranty.

4. LIMITATION OF LIABILITY

Glice shall under no circumstances be liable towards the purchaser or to third parties for any indirect, special or consequential damage or accidents, even if Glice was informed of the possibility that such damage could be caused.

5. NOTIFICATIONS

Except as indicated otherwise in the Sales Contract, all communication concerned with the Warranty shall be considered duly delivered if it is in writing and delivered in person, by courier or sent by certified mail with acknowledgment of receipt, addressed to the purchaser at the invoicing address supplied to Glice. In addition to all the above Glice may, if it so desires, send the purchaser any notification regarding the Warranty by e-mail. All notifications sent by e-mail shall be considered duly performed when it is transmitted to an e-mail address, which the purchaser has supplied to Glice.

6. APPLICABLE LAW

The validity, construction and performance of this Warranty shall be governed and construed in accordance with the provisions of Swiss law. The parties hereby expressly agree that all disputes arising out of this Warranty shall be settled by the Courts and Tribunals of the city of Lucerne (Switzerland).

INSOFAR AS PERMISSIBLE UNDER APPLICABLE LEGISLATION, THE WARRANTY IN THIS DOCUMENT IS IN LIEU OF ANY OTHER WARRANTY OF ANYKIND, BOTH EXPRESSED AND IMPLIED, INCLUDING ANY WARRANTY OF FITNESS FOR A PARTICULAR PURPOSE, SATISFACTORY QUALITY, DURABILITY OR WARRANTIES DERIVED FROM COMMERCIAL USES.

Glice used products limited warranty terms

1. GLICE PRODUCTS FUNCTIONING

The Glice Panels, dasher boards and accessories (henceforth the “Product”) are manufactured for their final use from raw materials, semi-finished and finished products of the highest quality.

Except as stipulated in Clause 2, the Product has a 9-year warranty (one side used, one side new on 20mm Panels at time of purchase), a 6-year warranty (both sides used on 20mm Panels at time of purchase), a 5-year warranty (on 13mm Panels), a 4-year warranty (on 10mm Panels), a 2-year warranty (Sharpening Machine), a 1-year warranty (Dasher boards) or a 1-year warranty (all other Accessories) covering manufacturing defects counting from the date of delivery of the Product (henceforth the “Warranty”). This Warranty is only valid as long as the Glice Product is installed, maintained and used according to the procedures described in the Glice Manual and under the condition that the purchase is registered in the [Glice warranty database](#). This Warranty is non-transferable and extended only to the original purchaser of the Product.

2. REPAIR OR REPLACEMENT

For this Warranty to be valid and executable, Glice must be notified in writing of any defective Product within 15 days of the time such defect is discovered. Such notification must be accompanied by dated proof-of-purchase and a photograph sample of the defective Product. If any Product covered by this Warranty does not function as warranted, if the failure is not included in the list of exclusions in Clause 3, and if Glice deems the Warranty to be applicable, Glice will at its sole discretion and subject to each individual case: (i) repair the Product; (ii) replace the Product; (iii) return the amounts paid by buyer terminating the purchase agreement; or (iv) reduce the price of the relevant invoice.

The expenses caused by the execution of this Warranty (transport, uninstallation and reinstallation etc.) will be borne by the purchaser. In no event shall Glice be liable for costs or fees associated with uninstallation, reinstallation or transports to replace the defective Product. The value of the Product to be replaced shall be calculated on the base of the time the Product has been used by the owner prior to the defect or damage.

3. WARRANTY EXCLUSIONS

The Warranty does not cover, among others, the following:

- a) Breakdowns and malfunctions of the Product caused by defective assembly, improper use, inadequate handling, negligent storage or failure to perform adequate maintenance
- b) Damage caused by external causes such as acts of nature, or damage caused by civil disturbance, including, but not limited to war, flood or fire.
- c) Ordinary wear and tear of the Product
- d) Damage caused by accidents or modification of the Product without Glice’s prior written consent

The list above is not exhaustive, as other issues may not be covered by this Warranty.

4. LIMITATION OF LIABILITY

Glice shall under no circumstances be liable towards the purchaser or to third parties for any indirect, special or consequential damage or accidents, even if Glice was informed of the possibility that such damage could be caused.

5. NOTIFICATIONS

Except as indicated otherwise in the Sales Contract, all communication concerned with the Warranty shall be considered duly delivered if it is in writing and delivered in person, by courier or sent by certified mail with acknowledgment of receipt, addressed to the purchaser at the invoicing address supplied to Glice. In addition to all the above Glice may, if it so desires, send the purchaser any notification regarding the Warranty by e-mail. All notifications sent by e-mail shall be considered duly performed when it is transmitted to an e-mail address, which the purchaser has supplied to Glice.

6. APPLICABLE LAW

The validity, construction and performance of this Warranty shall be governed and construed in accordance with the provisions of Swiss law. The parties hereby expressly agree that all disputes arising out of this Warranty shall be settled by the Courts and Tribunals of the city of Lucerne (Switzerland).

INSOFAR AS PERMISSIBLE UNDER APPLICABLE LEGISLATION, THE WARRANTY IN THIS DOCUMENT IS IN LIEU OF ANY OTHER WARRANTY OF ANYKIND, BOTH EXPRESSED AND IMPLIED, INCLUDING ANY WARRANTY OF FITNESS FOR A PARTICULAR PURPOSE, SATISFACTORY QUALITY, DURABILITY OR WARRANTIES DERIVED FROM COMMERCIAL USES.

How to maintain your Glice Warranty

Step 1 - Always register your Glice purchase here first:

<https://app.smartsheet.com/b/form/b4821c7da61d44938ecde2dcbc9908fc>

13/20mm Skating Panels – Indoor Installation	Additional – For Outdoor Installations
<ol style="list-style-type: none"> 1. Keep your Glice rink clean and only use GliceClean and GliceCare solutions on the skating panels in accordance with manufacturers instructions. 2. Follow the instructions in the Guide for regular treatment/conditioning of the skating panels. 3. During installation and removal, ensure that the panels are not subjected to dropping or bending. 4. Do not allow figure skaters to conduct toe-pick jumps that can deeply gouge the skating panels. 	<ol style="list-style-type: none"> 5. Cover the rink panels with tarpaulins or other sunlight protection when the rink is not in use. 6. Periodically pressure wash the rink surface to remove embedded dirt surface, so it stays white. 7. Ensure there is nothing interfering with the Glice panel's ability to expand or contract with outdoor temperature changes. 8. If you uninstall and store the skating panels outside, they must be covered with a tarp to protect them from sun, rain/snow and dirt.
Leisure Dasher Boards – Indoor Installation	Additional – For Outdoor Installations
<ol style="list-style-type: none"> 1. Wash down Glice Dasher boards with a pH neutral cleaner using a 50% dilution with water if cleaning is needed. Don't use alcohol or abrasive cleaners. 2. Glice Leisure Dasher boards are not intended for serious hockey play or training. Do not shoot pucks at Leisure dasher boards or impact the dasher boards as part of hockey "body-checking". 	<ol style="list-style-type: none"> 3. Be sure the Dasher board feet are securely anchored so that wind or other impacts cannot displace the Dasher board causing damage. 4. Periodically check and retighten the screws that hold the Dasher boards to the stanchions and feet, but just hand-tighten them. 5. If you uninstall and store the dasher boards outside, they must be covered with a tarp to protect them from sun, rain/snow and dirt.
Glice Sharpener – Indoor Installation	Additional – For Outdoor Installations
<ol style="list-style-type: none"> 1. Keep the Sharpener clean inside, regularly vacuum metal particles that accumulate inside, 2. Change the grinding wheels on the prescribed schedule base on sharpening count. 3. Insure that the sharpener is connected to a grounded electric socket with at least 10 amps of available power. 	<ol style="list-style-type: none"> 4. Ensure the Sharpener is located in a dry location with no exposure to rain/snow or other weather. 5. Always factory service the sharpener after 10,000 sharpening cycles regardless of indoor or outdoor use. Contact your Glice representative for service.

- Always notify Glice of warranty issue(s) within 15 days of identifying a problem
- Always send pictures and complete descriptions of the issue to helpdesk@glice.com
- Do not uninstall or attempt a repair prior to being contacted by a Glice representative.

Get started today!

Wherever you are, we will support you to make your project a success!

America

Glice USA

Glice Canada

Glice Argentina

Glice Brazil

Glice Chile

Glice Colombia

Glice Mexico

Glice Peru

Glice Uruguay

Europe

Glice Austria

Glice Baltics

Glice Benelux

Glice Croatia

Glice Czech Republic/Slovakia

Glice France

Glice Germany

Glice Italy

Glice Spain

Glice Sweden

Glice Switzerland

Glice Turkey

Glice UK

Asia-Pacific

Glice Australia

Glice China

Glice Hong Kong

Glice India

Glice Indonesia

Glice Japan

Glice Malaysia

Glice New Zealand

Glice Singapore

Glice South Korea

Middle East

Glice Iran

Glice Israel

Glice Morocco

Glice South Africa &
Sub-Saharan Africa

Glice Middle East

Glice AG

Hirschengraben 33b, 6003

Luzern, Switzerland

Switzerland: +41 44 586 0693

USA: +1 216 307 8999

info@glice.com / www.glice.com



© Glice AG



BETHANY CHURCH of LaPorte

La Porte

KARLA HENNING GARWOOD

Kaiser auto

GARWOOD ORCHARDS

THE KEHN FAMILY

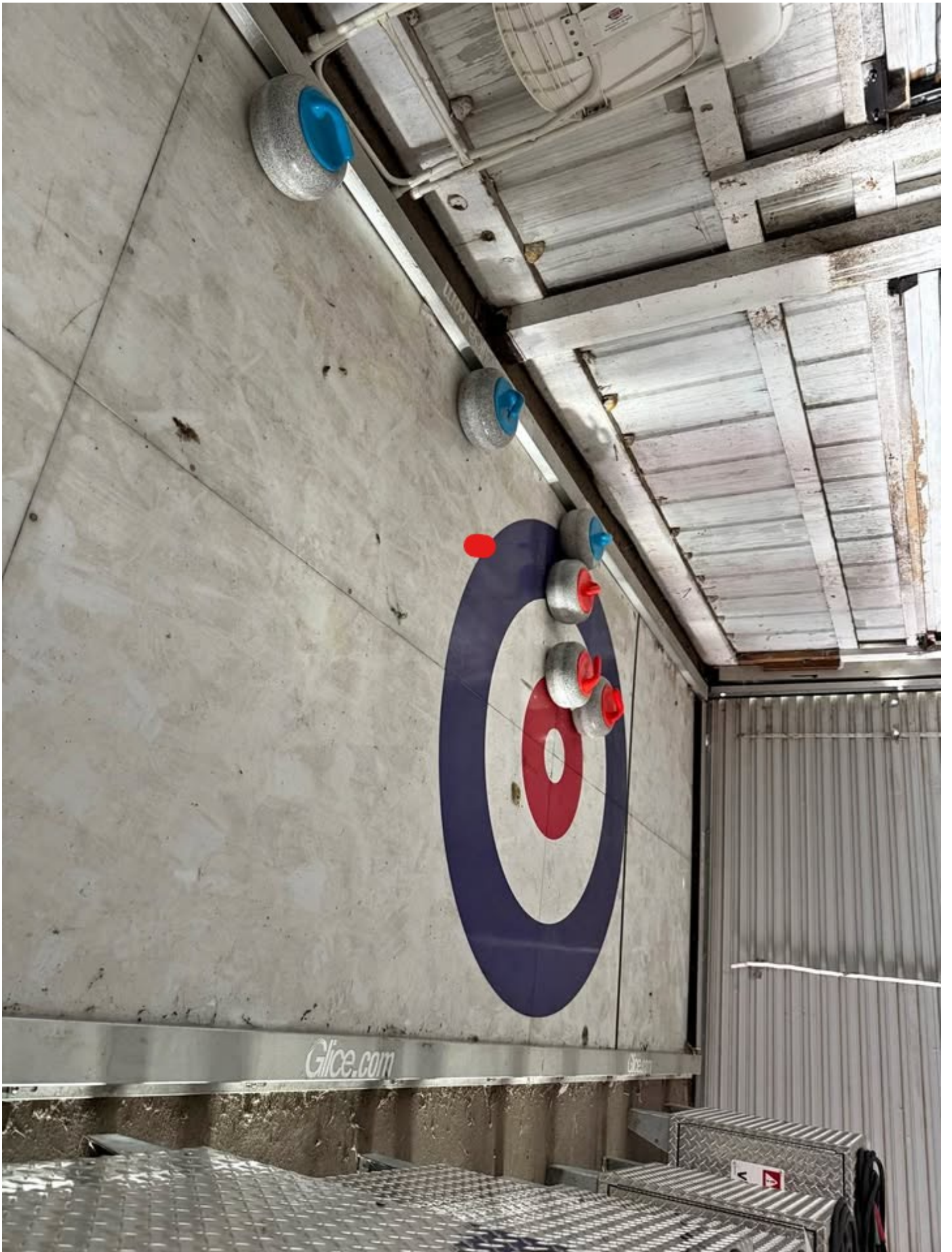
INDUSTRIAL

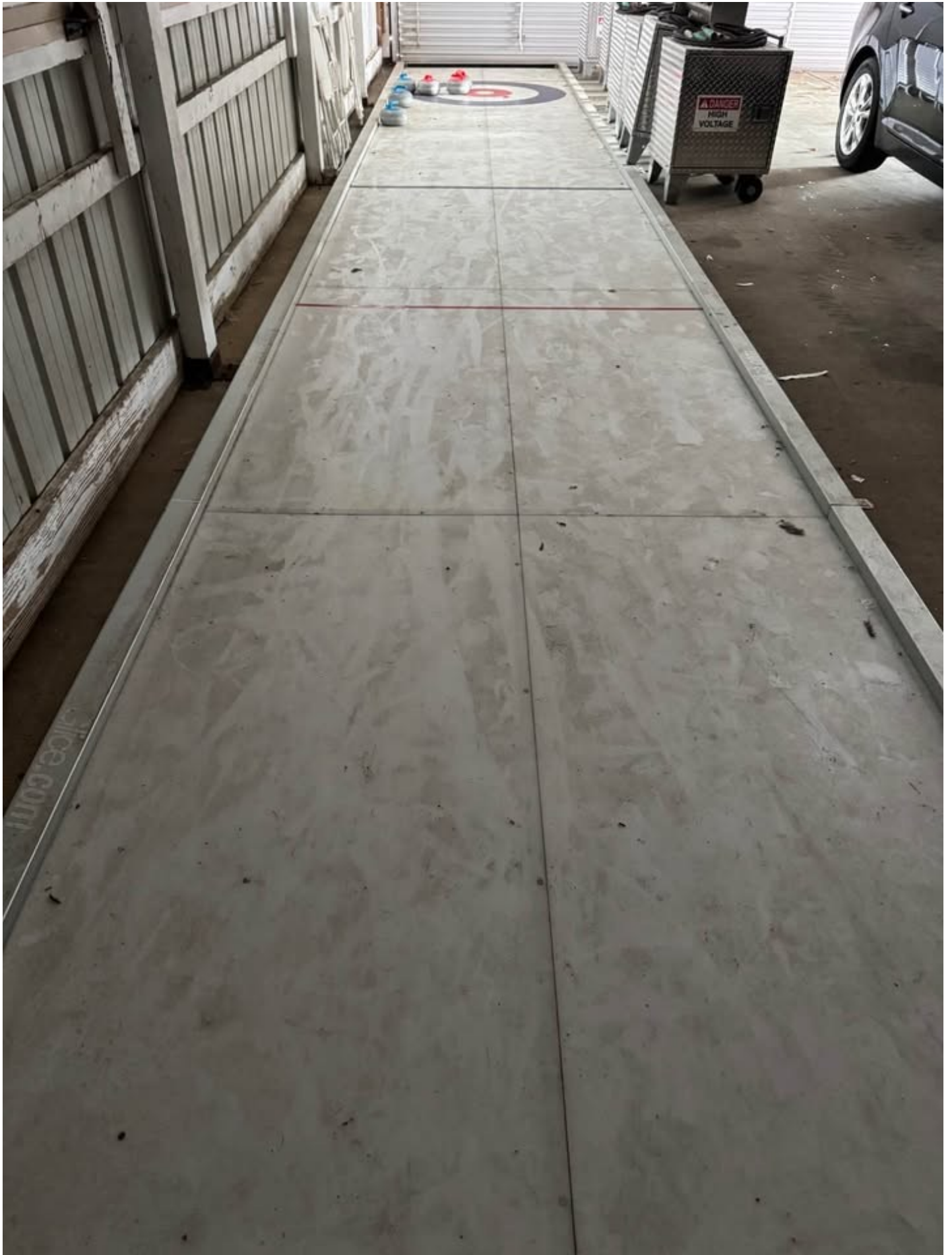
LUMBER PRODUCTS, INC.

RENOBIT

Glice
Glicerink.com









BETHANY CHURCH

Attention: Niles DDA Main Street
333 N 2nd Street Suite 303, Niles, MI 49120

Date: 1/6/2026

Invoice Number: 1 Community 2026
Terms: 30 Days

Description	Quantity	Unit Price	Cost
GLICE Skating Rink & Curling Lane	1	\$13,000.00	\$13,000.00
		Subtotal	\$13,000.00
		Total	\$13,000.00

Thank you for helping the purchase of this rink we hope it is a great success and blessing in your community!

Sincerely yours,

Carey Garwood

Bethany Church

102 G Street

LaPorte, IN 46350

51.5 X 25.7 Eco-Rink Fully Equipped-Used System

Carey Garwood
garwood13@hotmail.com
(219) 363-8060

Delivery: Bethany Lutheran Church, 102 G St, La Porte, IN 46350

323- 26

Skatable Length in feet 51.57

Skatable Width in feet 25.79

Skatable Surface in sqft 1330.11

Product	Unit(s)	Description
Glice Panel 20 mm	64	Premium Eco-Ice Technology
Glice Care 5L	2	Maintenance liquid
Glice Clean 1L	2	Cleaning liquid
Glice Sharpening Machine	1	Easy-to-handle and effective skate sharpening
Glice Smart Polisher	1	High performing cleaning system incl. 2 fogger
Rubber Floor	2	Effective protection of skates and floor. 15 x 1.25m
Glice Skate Shelf	1	Smart design and extra robust. 48 Pairs per Shelf
Glice Leisure Skates (pairs)	48	High quality materials, extra-durable blade and high-comfort
Glice Vacuum Cleaner	1	High performing, industrial quality grade
Grinding wheel	0	Extra units for the period of rink operation
Glice Rink Manager Certification	1	Access to Glice Academy, FB Forum & Certification
Glice Pallet Box	5	Iron transport and storage Box
Glice Skating Aid	2	Learning support for beginners

Subtotal 51,172.68 USD

Installation
Transport (estimation) DDP 1,960.00 USD

Total 53,132.68 USD

Total 53,132.68 USD

Terms of Payment 50% to confirm order, 50% to ship
Payment Information Options: Check, Wire, ACH, or Major Credit Cards
Send checks to: Glice USA, Inc. | 7102 La Vista Place
Suite 203 | Longmont, Colorado USA 80503-0801

Glice USA Bank Information Account#: 671635776 | ACH Routing#: 102001017 | Wire Routing#: 021000021