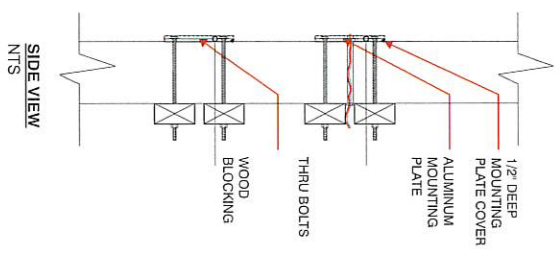
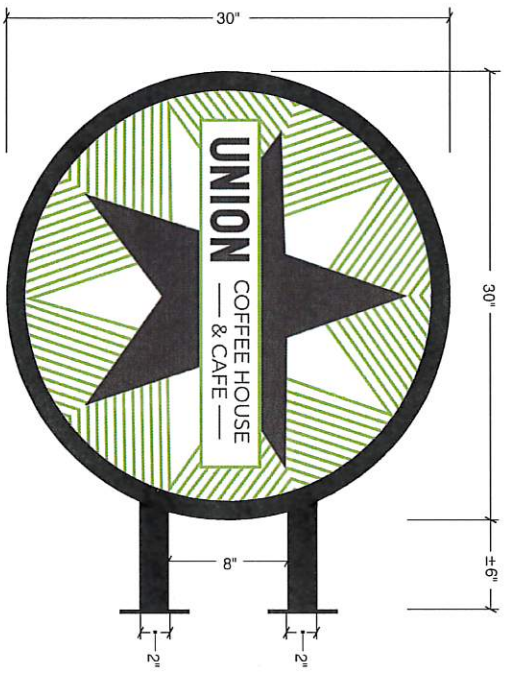


PROPOSED SIGNAGE - **OPTION 3 / ILLUMINATED**
NTS



SIDE VIEW
NTS

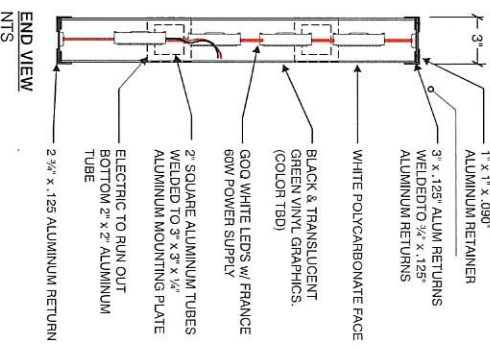
A LED ILLUMINATED DOUBLE FACED BLADE SIGN - **OPTION 3**
SCALE: 1 1/2" = 1'-0"
SOFT: 6.25

RETURNS / RETAINER
3"x.125" ALUMINUM RETURNS WELDED TO 3/4" x.125" ALUMINUM INNER RINGS
1"x1"x.090" ALUMINUM RETAINER
BLADE SIGN PRIMED WHITE INSIDE AND OUTSIDE PAINTED SATIN BLACK.

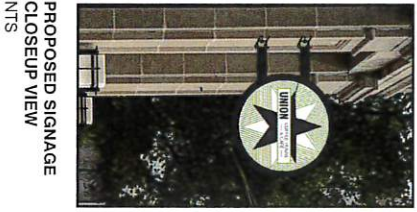
FACES
WHITE POLYCARBONATE w/ 1ST SURFACE OPAQUE VINYL PAINTED TO MATCH PMS 5747 GREEN. VINYL REVERSE WEDED TO SHOW ILLUMINATED WHITE BORDER & TOOTH LOGO.

ILLUMINATION
WHITE GOOD WHITE LEDS AND FRANGE 60W POWER SUPPLIES

*PROTECTION TO BE DETERMINED BY SURVEY



END VIEW
NTS



PROPOSED SIGNAGE
CLOSEUP VIEW
NTS



PROPOSED SIGNAGE
NIGHTTIME ILLUMINATION
NTS



SALES: SEAN DENISON
PM:
ART: CAD 7.12.21

DWG # 2101144-00
REVISION

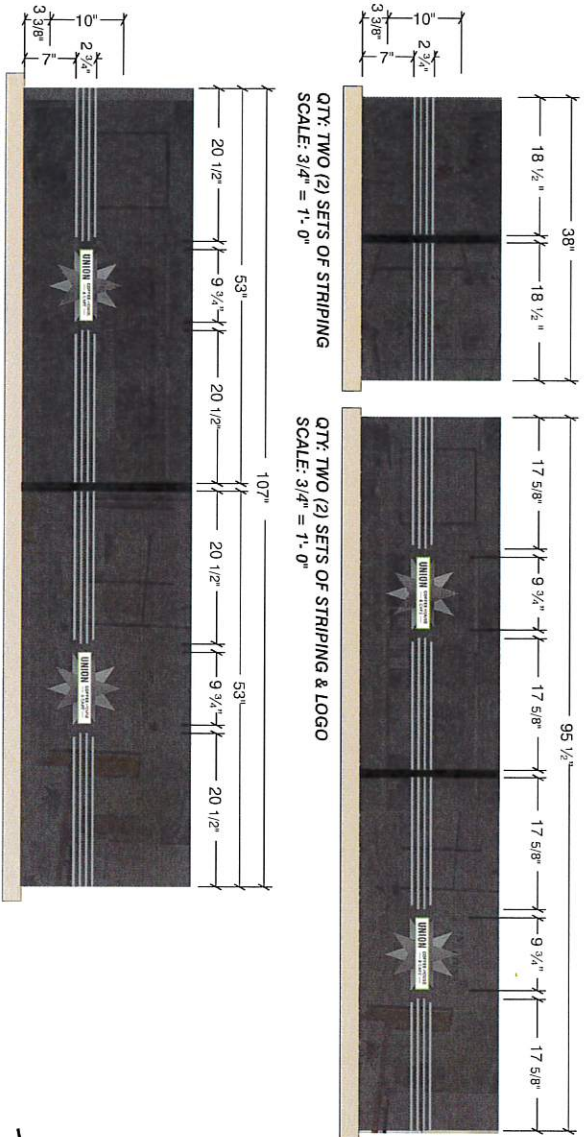
LOCATION: UNION COFFEE HOUSE & CAFE
115 E FRONT ST.
BUCHANAN, MI 49107



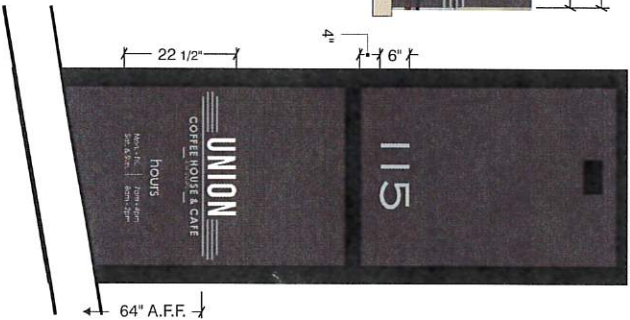
PROPOSED WINDOW VINYL - RIGHT ELEVATION
NTS



PROPOSED WINDOW VINYL - RIGHT ELEVATION
NTS



QTY: FOUR (2) SETS OF STRIPING
SCALE: 3/4" = 1'-0"



SALES: SEAN DENISON
PM: CAD 7.12.21

DWG # 2101144-00
REVISION

LOCATION: UNION COFFEE HOUSE & CAFE
115 E FRONT ST.
BUCHANAN, MI 49107