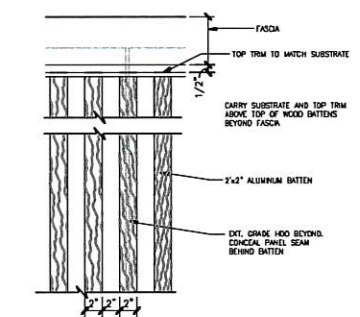
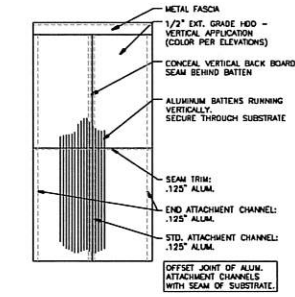
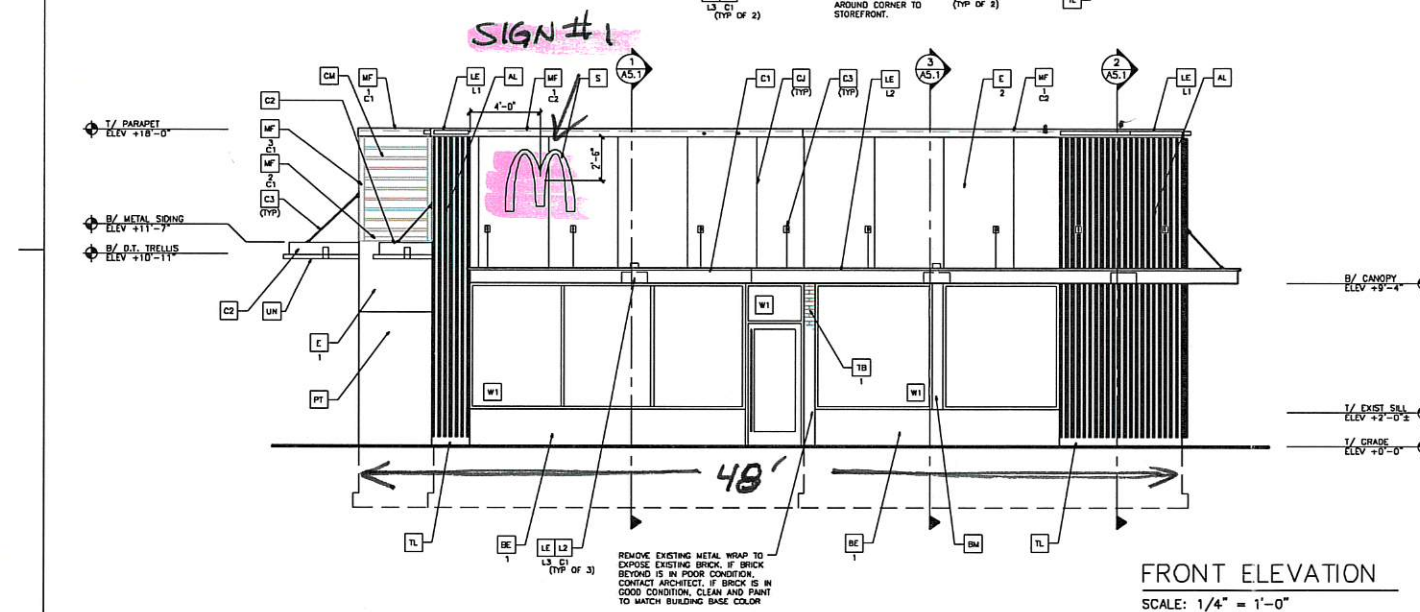
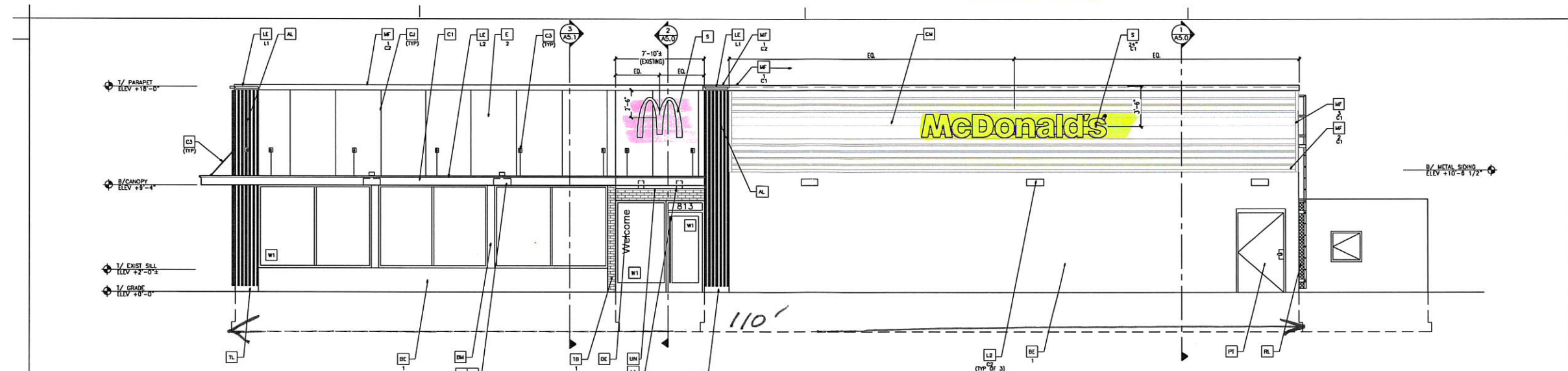


SIGN #2

SIGN #3



COLOR LEGEND

STEEL SCHEME	BUILDING BASE COLOR:	<input type="checkbox"/> BRICK VENEER: HEBRON 'SLATE GRAY' SMOOTH. MORTAR: SM750 'SILVERSTONE'.
	FEATURE WALLS/D.I. SURROUNDS:	<input type="checkbox"/> EIFS/PAINT: SHERWIN WILLIAMS SW-7091 'GAUNTLET GRAY'. EIFS FINISH: FINESSE.
DESERT SCHEME (NOT USED)	BUILDING BASE COLOR:	<input type="checkbox"/> CEMENT SIDING: JAMES HARDIE HARDIE PLANK. COLOR: 'AGED PEWTER'
	FEATURE WALLS/D.I. SURROUNDS:	<input type="checkbox"/> EIFS: SHERWIN WILLIAMS SW-7069 'IRON ORE' EIFS FINISH: HYDROPHOBIC/FINESSE.
IRON SCHEME (NOT USED)	BUILDING BASE COLOR:	<input type="checkbox"/> ALUM. COMP: ALPOLIC CUSTOM COLOR: RAL 7022
	FEATURE WALLS/D.I. SURROUNDS:	<input type="checkbox"/> BRICK VENEER: HEBRON 'SILVERADO' SMOOTH. MORTAR: SM300 'LIGHT BUFF'.
STEEL SCHEME (NOT USED)	BUILDING BASE COLOR:	<input type="checkbox"/> EIFS/PAINT: BENJAMIN MOORE HC-85 'FAIRVIEW TAUPE'. EIFS FINISH: HYDROPHOBIC/FINESSE.
	FEATURE WALLS/D.I. SURROUNDS:	<input type="checkbox"/> CEMENT SIDING: JAMES HARDIE HARDIE PLANK. COLOR: 'TIMBER BARK'
DESERT SCHEME (NOT USED)	BUILDING BASE COLOR:	<input type="checkbox"/> EIFS: SHERWIN WILLIAMS SW-7069 'IRON ORE' EIFS FINISH: HYDROPHOBIC/FINESSE.
	FEATURE WALLS/D.I. SURROUNDS:	<input type="checkbox"/> ALUM. COMP: ALPOLIC CUSTOM COLOR: RAL 7022
IRON SCHEME (NOT USED)	BUILDING BASE COLOR:	<input type="checkbox"/> BRICK VENEER: ENDICOTT MEDIUM IRON SPOT 46 MORTAR: SM750 'SILVERSTONE'.
	FEATURE WALLS/D.I. SURROUNDS:	<input type="checkbox"/> PAINT: BENJAMIN MOORE 1469 'EAGLE ROCK'.
STEEL SCHEME (NOT USED)	BUILDING BASE COLOR:	<input type="checkbox"/> EIFS: SHERWIN WILLIAMS SW-7069 'IRON ORE' EIFS FINISH: HYDROPHOBIC/FINESSE.
	FEATURE WALLS/D.I. SURROUNDS:	<input type="checkbox"/> ALUM. COMP: ALPOLIC CUSTOM COLOR: RAL 7022

EIFS NOTE:
**PLACE EIFS CONTROL JOINTS PER MANUFACTURER'S STANDARDS. NEW EIFS SHALL BE 'OUTSULATION PLUS MD' BY DRYVIT, OR EQUAL. USE 'PANZER 20' ULTRA HIGH IMPACT MESH IN HIGH IMPACT ZONES (BELOW 9'-4"). SEE DETAILS ON A6.0.

EXTERIOR WINDOW ASSEMBLY (STOREFRONT & ENTRANCE SYSTEM)

- ALUMINUM FRAME W/ POWDER COAT-FINISH. THERMALLY BROKEN WITH HEAD RECEIVER CHANNEL. COLOR: DARK BRONZE
- 1" INSULATED GLAZING - SEE EXT ELEVATIONS FOR LOCATION OF SAFETY GLASS.
- PROVIDE FLASHING AT HEAD & SILL - CONTINUOUS SEALANT.
- PROVIDE 2-PIECE METAL CAP @ C.M.U. SILL
- CORIAN SILL AT INTERIOR (REFER TO DECOR PLANS BY OTHERS)

KEY NOTES:

- AL ALUMINUM BATTEN SYSTEM SIZE: 2"x2" PROFILE COLOR: WOOD GRAIN, BACKRILL UNFINISHED, END CAP PAINTED TO MATCH. SUBSTRATE: 1/2" EXT. HIGH DENSITY OVERLAY (HDO) PLYWOOD, BB, GROUP 1, HDO BOTH FACES. APA TRADEMARKED. COURSE GROUT SAND SURFACES PRIOR TO PRIMING, PRIME AND PAINT BOTH SIDES AND ALL EDGES PRIOR TO INSTALLATION. COLOR: SHERWIN WILLIAMS 'IRON ORE' SW 7069.
- BE EXISTING BRICK TO REMAIN. PAINT AS INDICATED. SEE COLOR LEGEND: -COLOR 1: (BASE BUILDING COLOR)
- BM NEW BRICK VENEER TO MATCH EXISTING. PAINT AS INDICATED. SEE COLOR LEGEND: -COLOR 1: (BASE BUILDING COLOR)
- BU NEW EXTRA DARK BRONZE BREAK METAL TO MATCH STOREFRONT FINISH. EXIST BREAK METAL TO REMAIN AS NOTED.
- CU 1/2" V-CROOVE EIFS CONTROL JOINT OR CMU COLD JOINT.
- C1 ALUMINUM CANOPY SYSTEM W/ FASCIA. COLOR: WHITE.
- C2 ALUMINUM CANOPY SYSTEM. COLOR: RAL 7022.
- C3 ALUMINUM CANOPY SYSTEM. COLOR: RAL 7022. CG TO PROVIDE CONTINUOUS BLOCCING ON WALL BEHIND TRUCKS AT METAL PANELS.
- CM 1/2" REVEAL METAL WALL PANEL SYSTEM BY METAL ERA. COLOR: WEATHERED ZINC.
- D HOLLOW METAL DOOR - PAINT TO MATCH COLOR OF SURROUNDING BASE BUILDING COLOR.
- DE DECAL GRAPHICS, SURFACE APPLIED, FIELD INSTALLED. PRE-CUT, PRE-SPACED. SUPPLIED BY GC. SUPPLIERS: VONCLA (855) 330-7337 von.bover@voncla.com OR METALCONCEPTS (847) 543-4600 metalconcepts.com
- E NEW EXTERIOR INSULATION FINISH SYSTEM (EIFS) SEE A5.0. COLOR 1: (SEE BUILDING BASE COLOR ON COLOR LEGEND) COLOR 2: (SEE FEATURE WALL COLOR ON COLOR LEGEND)
- L1 RECESSED DOWN LIGHT FIXTURE - SEE E2.0.
- L2 RADIAL SCIENCE LIGHT FIXTURE - SEE E2.0.
- C1= WHITE C2= PLATINUM SILVER
- LE ACCENT LIGHTING - SEE E2.1
- LT LED LIGHT: L1 = SUN LED (DOWN ONLY) L2 = INTEGRAL CANOPY FIXTURE L3 = UP ONLY FLOOD LIGHT FIXTURE
- PI WALL PANELS, CUTTERS, DOWNSPOUTS, LADDER, & T.M. DOORS TO MATCH BASE COLOR.
- MF METAL FASCIA -TYPE: 1= PREFAB ANCHOR-TITE FASCIA 2= BOTTOM TRIM AT METAL REVEAL PANEL 3= BOTTOM TRIM @ METAL REVEAL PANEL CORNERS, CLOSURES. COLOR: C1= WEATHERED ZINC C2= RAL 7022
- S McDONALD'S SIGNAGE BY OTHERS - UNDER SEPARATE PERMIT.
- C1 RACEWAY COLOR C2= SILVER C3= RAL 7022
- TB THIN BRICK (NEW) TO MATCH EXISTING SIZE & TEXTURE. COLOR: COLOR 1: (SEE BUILDING BASE COLOR ON COLOR LEGEND) COLOR 2: (SEE FEATURE WALL COLOR ON COLOR LEGEND)
- TL TILE (AT BASE OF BATTEN SYSTEM) EUROWEST: E-WOOD COLLECTION COLOR: RB BLACK SIZE: 6"x6" WATERPROOF SETTING MATERIAL & GROUT: MAPLE GROUT COLOR: ULTRA COLOR PLUS - 47 CHARCOAL GROUT WIDTH: 1/8" CONTACT: JAM DETER (714) 837-7500
- UN METAL UNDERSCORE. COLOR: GOLD.
- WE EXISTING DARK BRONZE COLOR POWDER COAT STOREFRONT TO REMAIN.
- WI NEW STOREFRONT & TEMPERED GLAZING. COLOR TO MATCH EXISTING.

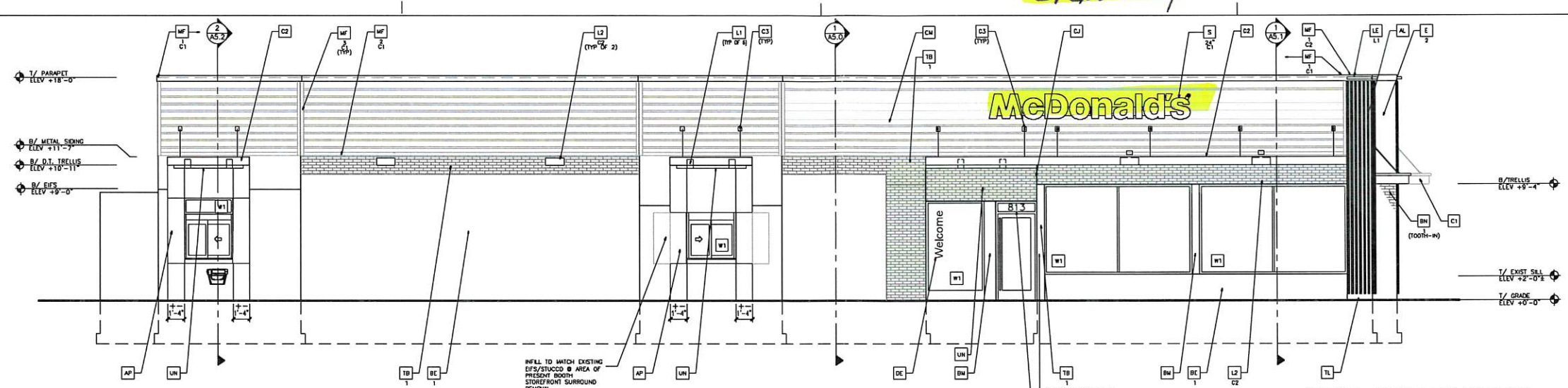
ARCHITECTURAL CONCEPTS, INC.
Architecture-Planning-Engineering
609 Massachusetts Ave. Indianapolis IN 46204-1508
Telephone: (317) 836-7600 FAX: (317) 833-6874
COPYRIGHT, 2021 by Architectural Concepts, Inc. All rights reserved.

DATE: JULY 21, 2021
PROJECT NUMBER: 18026
DRAWN BY: cjm CHECKED BY: WTS
REVISED:

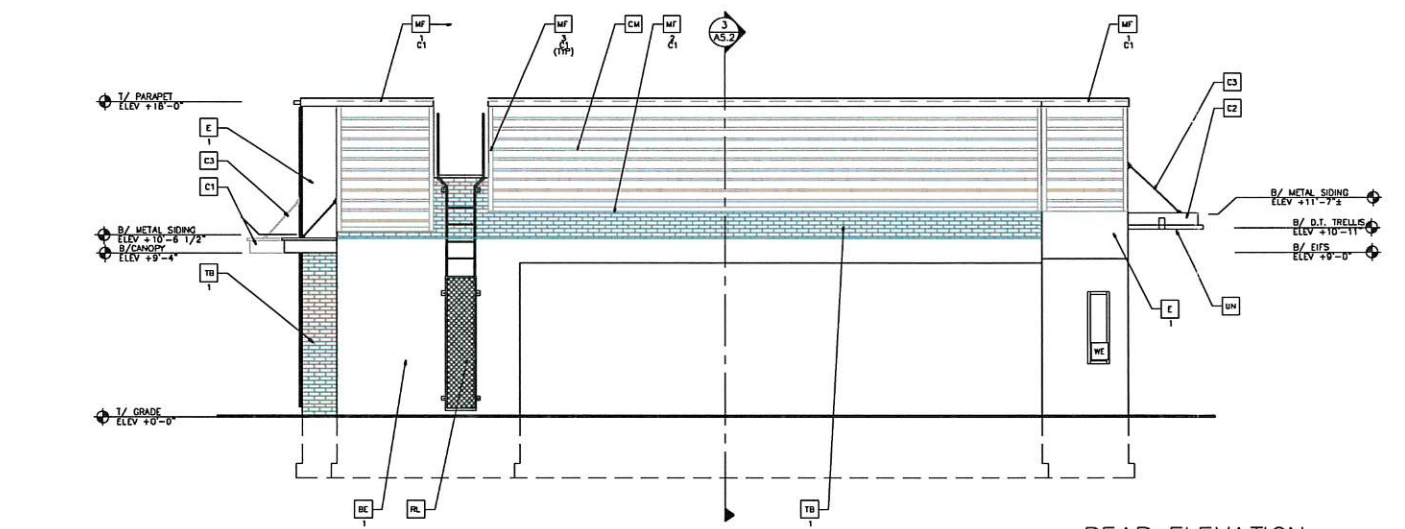
STATE OF INDIANA
REGISTERED ARCHITECT
W. J. S. 07-21-21
SHEET NUMBER: A2.0
OF: 14 ARCHITECTURAL

McDonald's USA, LLC
STATE/SITE #21-1764
PROJECT TITLE: MRP-EOTF REMODEL PROJECT
813 FRONT STREET BUCHANAN, MI
SHEET TITLE: ELEVATIONS

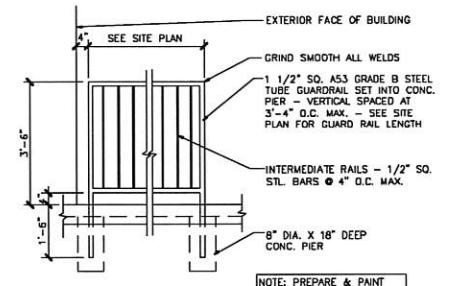
SIGN # 4



DRIVE-THRU ELEVATION
SCALE: 1/4" = 1'-0"



REAR ELEVATION
SCALE: 1/4" = 1'-0"



1
A2.1
1/2" = 1'-0"

McDonald's USA, LLC
STATE/SITE #21-1764
PROJECT TITLE:
**MRP-EOTF
REMODEL PROJECT**
613 FRONT STREET
BUCHANAN, MI
SHEET TITLE:
ELEVATIONS
DATE: JULY 21, 2021
PROJECT NUMBER: 18026
DRAWN BY: cjm CHECKED BY: WTS
REVISED:

COLOR LEGEND	
STEEL SCHEME	BUILDING BASE COLOR: BRICK VENEER: HEBRON 'SLATE GRAY' SMOOTH. MORTAR: SM750 'SILVERSTONE'.
	EIFS/PAINT: SHERWIN WILLIAMS SW-7091 'CAUNTLET GRAY'. EIFS FINISH: FINESSE.
	CEMENT SIDING: JAMES HARDIE HARDIE PLANK. COLOR: 'AGED PEWTER'
DESERT SCHEME (NOT USED)	BUILDING BASE COLOR: BRICK VENEER: HEBRON 'SILVERADO' SMOOTH. MORTAR: SM300 'LIGHT BUFF'.
	EIFS/PAINT: BENJAMIN MOORE HC-85 'FAIRVIEW TAUPE'. EIFS FINISH: HYDROPHOBIC/FINESSE.
	CEMENT SIDING: JAMES HARDIE HARDIE PLANK. COLOR: 'TIMBER BARK'
IRON SCHEME (NOT USED)	BUILDING BASE COLOR: BRICK VENEER: ENDICOTT MEDIUM IRON SPOT 46 MORTAR: SM750 'SILVERSTONE'.
	PAINT: BENJAMIN MOORE 1469 'EAGLE ROCK'.
	EIFS: SHERWIN WILLIAMS SW-7069 'IRON ORE' EIFS FINISH: HYDROPHOBIC/FINESSE.
IRON SCHEME (NOT USED)	BUILDING BASE COLOR: BRICK VENEER: ENDICOTT MEDIUM IRON SPOT 46 MORTAR: SM750 'SILVERSTONE'.
	PAINT: BENJAMIN MOORE 1469 'EAGLE ROCK'.
	EIFS: SHERWIN WILLIAMS SW-7069 'IRON ORE' EIFS FINISH: HYDROPHOBIC/FINESSE.

EIFS NOTE:
**PLACE EIFS CONTROL JOINTS PER MANUFACTURER'S STANDARDS. NEW EIFS SHALL BE: 'OUTSULATION PLUS MD' BY DRYVIT, OR EQUAL. USE 'PANDER 20' ULTRA HIGH IMPACT MESH IN HIGH IMPACT ZONES (BELOW 9'-4"). SEE DETAILS ON ASD.

EXTERIOR WINDOW ASSEMBLY (STOREFRONT & ENTRANCE SYSTEM)

- ALUMINUM FRAME W/ POWDER COAT-FINISH. THERMALLY BROKEN WITH HEAD RECEIVER CHANNEL. COLOR: DARK BRONZE
- 1" INSULATED GLAZING - SEE EXT ELEVATIONS FOR LOCATION OF SAFETY GLASS.
- PROVIDE FLASHING AT HEAD & SILL - CONTINUOUS SEALANT.
- PROVIDE 2-PIECE METAL CAP @ C.M.U. SILL
- CORIAN SILL AT INTERIOR (REFER TO DECOR PLANS BY OTHERS)

KEY NOTES:

- AL ALUMINUM BATTEN SYSTEM SIZE: 2"x2" PROFILE COLOR: WOOD GRAIN, BACKRILL UNFINISHED, END CAP PAINTED TO MATCH.
- DE DECAL GRAPHICS, SURFACE APPLIED, FIELD INSTALLED, PRE-CUT, PRE-SPACED, SUPPLIED BY GC SUPPLIERS: MONELA (888) 330-7337 ann.bowen@monela.com WWW.MONELA.COM (847) 543-4800 moneladecor@monela.com
- AP ALPOLIC METAL PANEL (COLOR: RAL 7022). SEE ASSEMBLY NOTES ON ASD.
- EX EXISTING BRICK TO REMAIN. PAINT AS INDICATED. SEE COLOR LEGEND: COLOR 1: (BASE BUILDING COLOR)
- BN NEW BRICK VENEER TO MATCH EXISTING. PAINT AS INDICATED. SEE COLOR LEGEND: COLOR 1: (BASE BUILDING COLOR)
- BW NEW EXTRA DARK BRONZE BREAK METAL TO MATCH STOREFRONT FINISH. EXISTING BREAK METAL TO REMAIN AS NOTED.
- V V-GROOVE EIFS CONTROL JOINT OR CHU COLD JOINT.
- C1 ALUMINUM CANOPY SYSTEM W/ FASCIA. COLOR: WHITE.
- C2 ALUMINUM CANOPY SYSTEM. COLOR: RAL 7022.
- C3 ALUMINUM CANOPY TIEBACK. COLOR: RAL 7022. C2 TO PROVIDE CONTINUOUS SLOTTING ON WALL BEHIND TIEBACKS AT METAL PANELING.
- C4 7" REVEAL METAL WALL PANEL SYSTEM BY METAL ERA. COLOR: WEATHERED ZINC.
- B HOLLOW METAL DOOR - PAINT TO MATCH COLOR OF SURROUNDING BASE BUILDING COLOR.
- DE DECAL GRAPHICS, SURFACE APPLIED, FIELD INSTALLED, PRE-CUT, PRE-SPACED, SUPPLIED BY GC SUPPLIERS: MONELA (888) 330-7337 ann.bowen@monela.com WWW.MONELA.COM (847) 543-4800 moneladecor@monela.com
- E NEW EXTERIOR INSULATION FINISH SYSTEM (E.I.F.S.) SEE ASD. COLOR 1: (SEE BUILDING BASE COLOR ON COLOR LEGEND) COLOR 2: (SEE FEATURE WALL COLOR ON COLOR LEGEND)
- DR GUARD RAIL - SEE SITE PLAN FOR LOCATION & LENGTH. PAINT: SHERWIN WILLIAMS 'IRON ORE' SW 7069.
- G GUTTERS AND DOWNSPOUTS TO MATCH BUILDING BASE COLOR.
- L1 RECESSED DOWN LIGHT FIXTURE - SEE E2.0.
- L2 RADIAL SCIENCE LIGHT FIXTURE - SEE E2.0.
- C1 COLOR: C1= WHITE C2= PLATINUM SILVER
- LE ACCENT LIGHTING - SEE E2.1
- L1 LED LIGHT: L1 = SLIM LED (DOWN ONLY) L2 = INTERNAL CANOPY FIXTURE L3 = UP ONLY FLOOD LIGHT FIXTURE
- PI WALL PANELS, GUTTERS, DOWNSPOUTS, LADDER, & H.M. DOORS TO MATCH BASE COLOR.

METAL FASCIA

TYPE:
1- PREFAB ANCHOR-TITE FASCIA
2- BOTTOM TRIM AT METAL REVEAL PANEL
3- VERTICAL TRIM @ METAL REVEAL PANEL CORNERS, CLOSURES.

COLOR:
C1= WEATHERED ZINC
C2= RAL 7022

McDONALD'S SIGNAGE BY OTHERS - UNDER SEPARATE PERMIT.

BACFIN COLOR
C1= SILVER
C2= RAL 7022

TB THIN BRICK (NEW) TO MATCH EXISTING SIZE & TEXTURE
COLOR:
C1: (SEE BUILDING BASE COLOR ON COLOR LEGEND)
C2: (SEE FEATURE WALL COLOR ON COLOR LEGEND)

TL TILE (AT BASE OF BATTEN SYSTEM) EUROBEST: E-WOOD COLLECTION
COLOR: RB BLACK SIZE: 6"x24"
WATERPROOF SETTING MATERIAL & GROUT: MAPEI
GROUT COLOR: ULTRA COLOR PLUS - 47 CHARCOAL
CROUT WEIR: E-1
CONCRETE JAW RETER (714) 937-7500

UN METAL UNDERSCORE. COLOR: GOLD.

WE EXISTING DARK BRONZE COLOR POWDER COAT STOREFRONT TO REMAIN.
NEW STOREFRONT & TEMPERED GLAZING. COLOR TO MATCH EXISTING.

ARCHITECTURAL CONCEPTS, INC.
Architecture-Planning-Engineering
608 Massachusetts Ave., Indianapolis IN 46204-1808
Telephone: (317) 638-7600 FAX: (317) 633-6674
COPYRIGHT, 2021 by Architectural Concepts, Inc. All rights reserved.

W. T. S. P. 07-21-21
SHEET NUMBER:
A2.1
OF: 14 ARCHITECTURAL