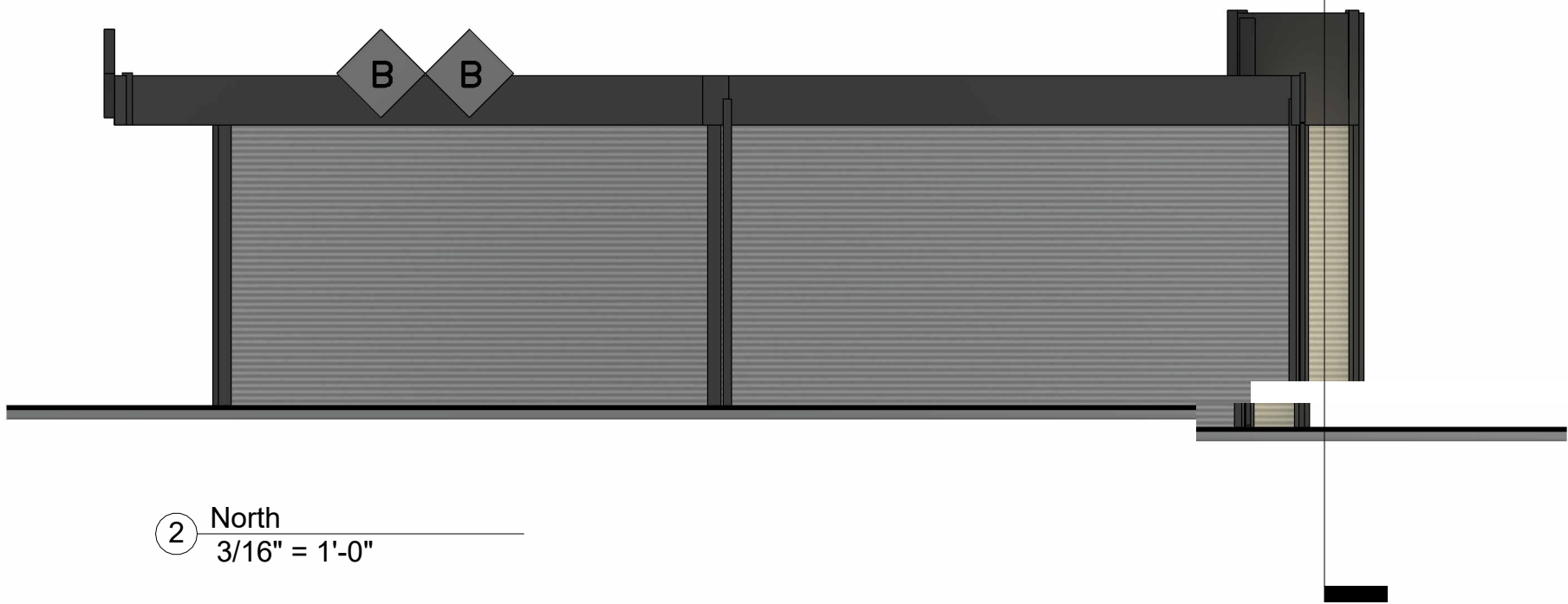
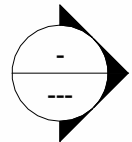


① South
3/16" = 1'-0"



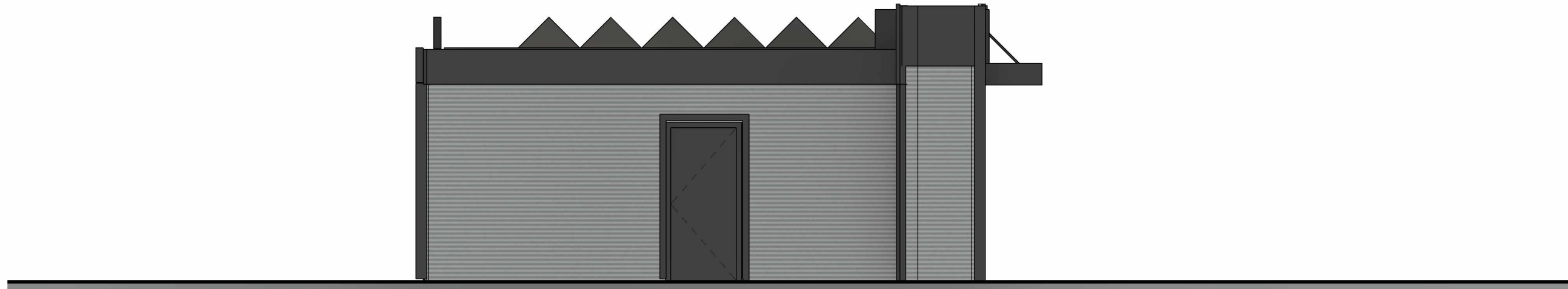
② North
3/16" = 1'-0"

BIGBY RENOVATIONS
PRELIMINARY-NOT-FOR-CONSTRUCTION

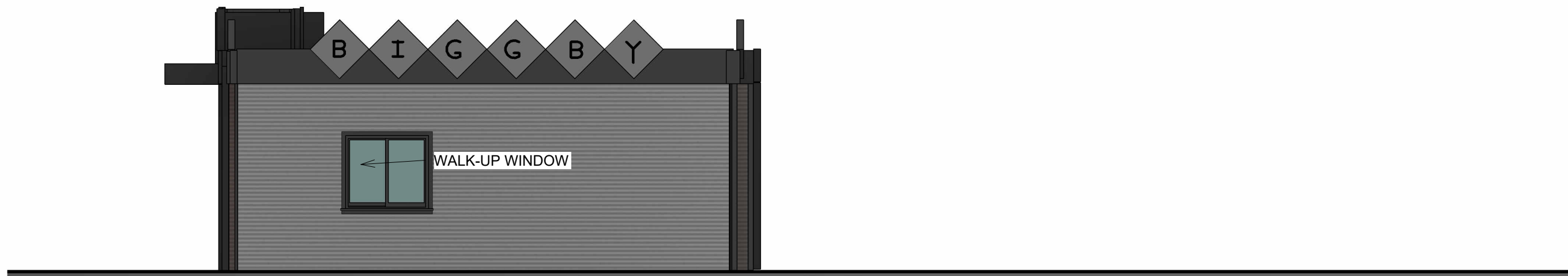
SEPTEMBER 27, 2023
BUCHANAN, MICHIGAN



FURKIS ARCHITECTURAL CONSULTING
James Furkis, AIA
 Berrien Center, Michigan
 (269)240-7213/(574)584-4726
 jim@furkis.com
 www.furkis.com



② West
3/16" = 1'-0"



① East
3/16" = 1'-0"

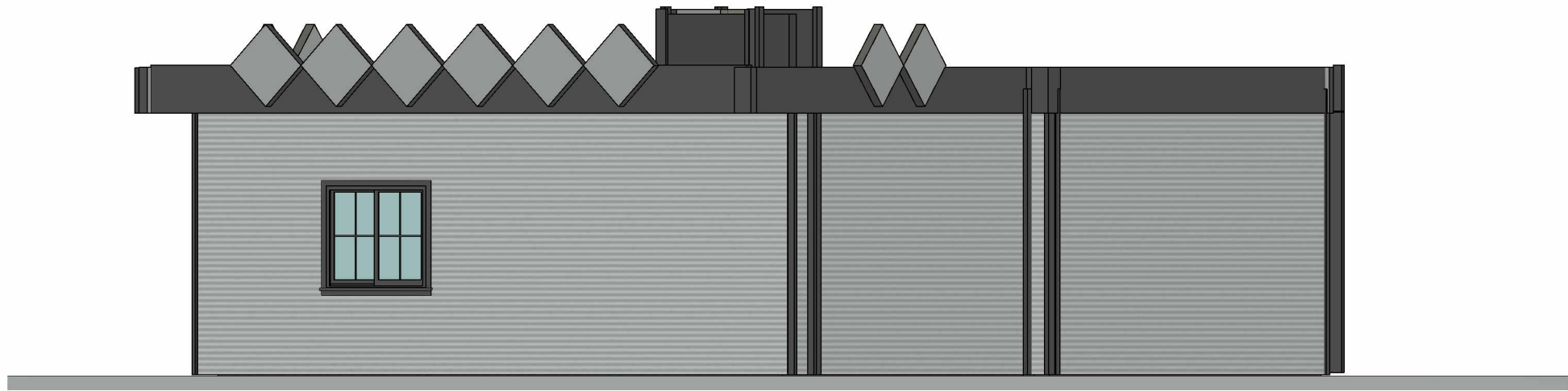
BIGBY RENOVATIONS
PRELIMINARY-NOT-FOR-CONSTRUCTION

SEPTEMBER 27, 2023
BUCHANAN, MICHIGAN

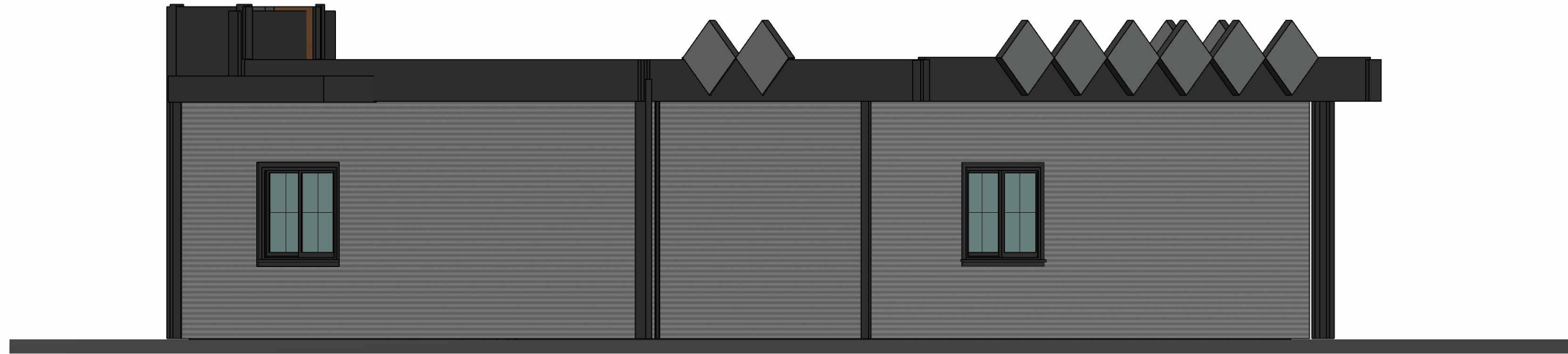




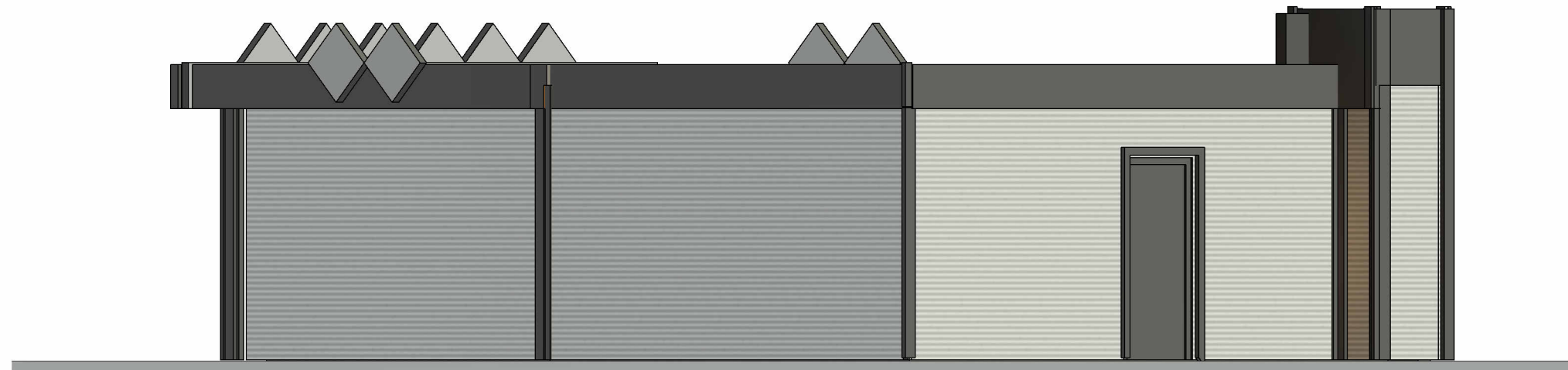
① LOOKING NORTHEAST



② LOOKING SOUTHWEST



① LOOKING NORTHWEST

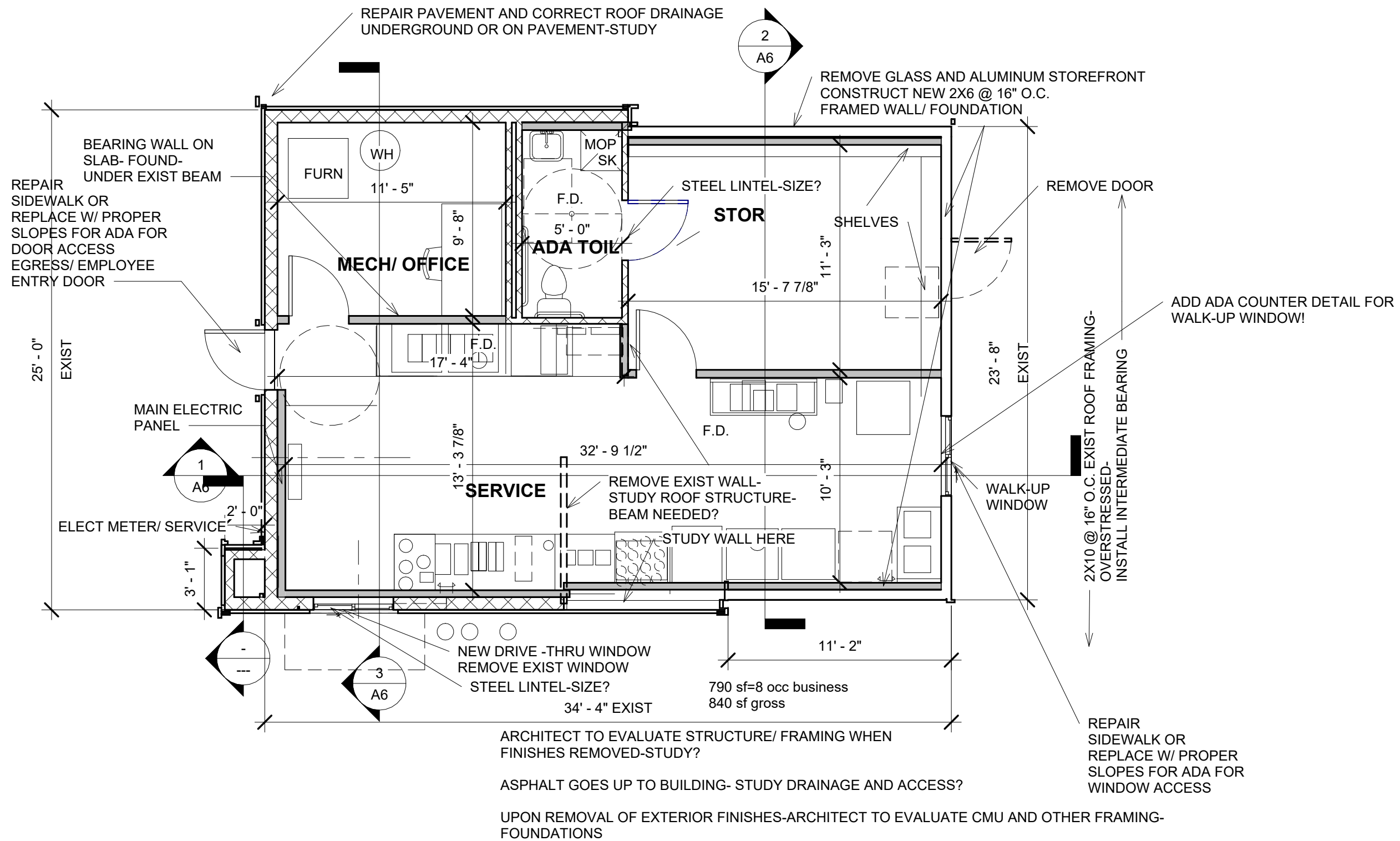


② LOOKING SOUTHEAST

BIGGBY RENOVATIONS
PRELIMINARY-NOT-FOR-CONSTRUCTION

SEPTEMBER 27, 2023
BUCHANAN, MICHIGAN





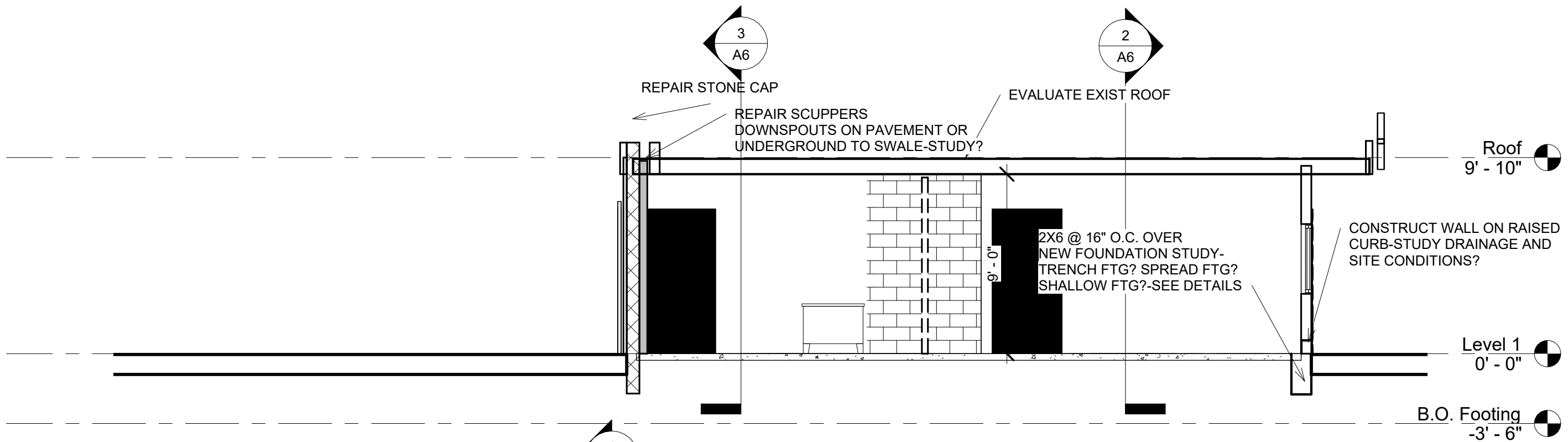
1 Level 1
3/16" = 1'-0"

ARCHITECT TO EVALUATE STRUCTURE/ FRAMING WHEN FINISHES REMOVED-STUDY?
 ASPHALT GOES UP TO BUILDING- STUDY DRAINAGE AND ACCESS?
 UPON REMOVAL OF EXTERIOR FINISHES-ARCHITECT TO EVALUATE CMU AND OTHER FRAMING- FOUNDATIONS

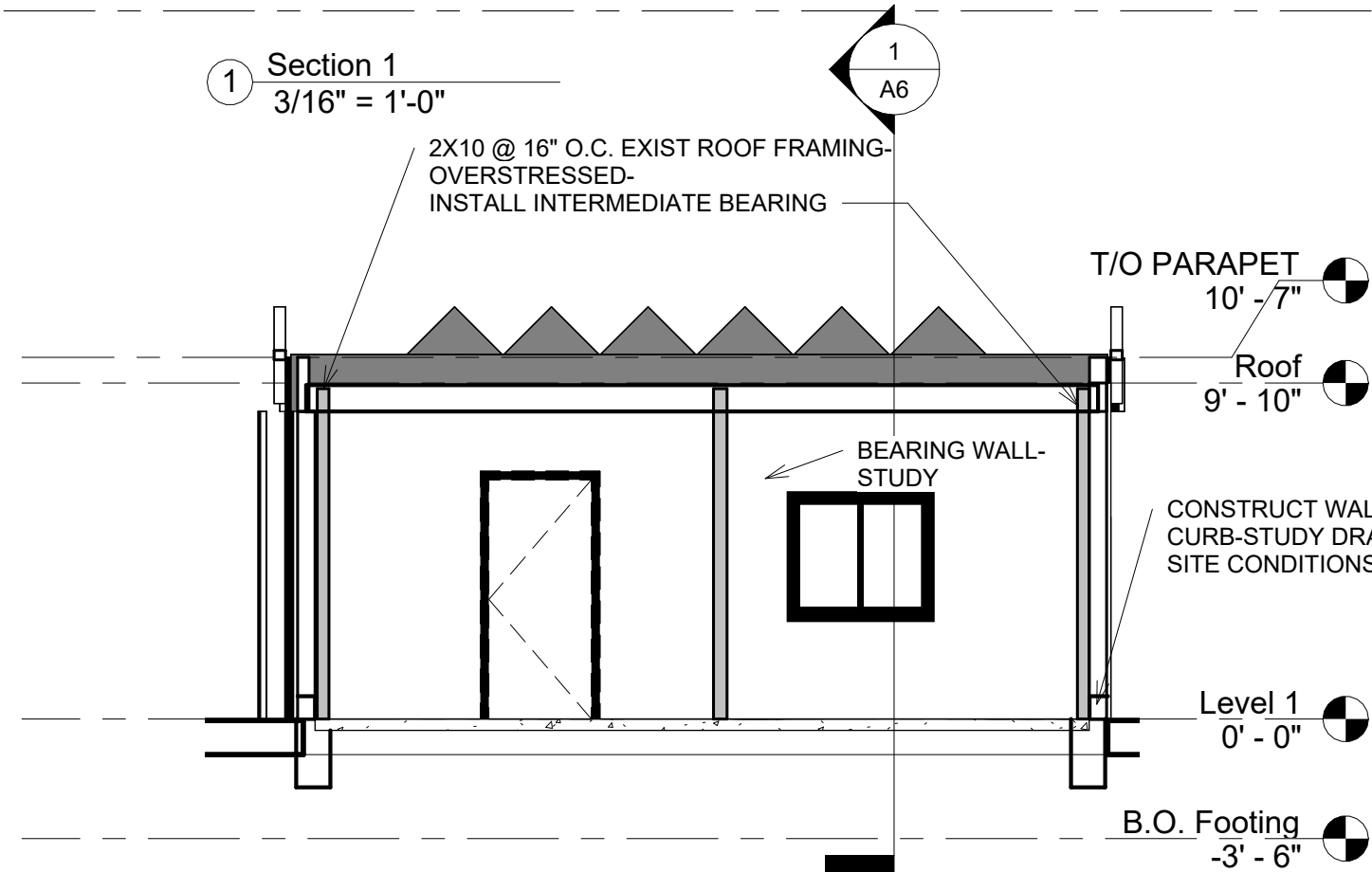
BIGGBY RENOVATIONS
 PRELIMINARY-NOT-FOR-CONSTRUCTION

SEPTEMBER 27, 2023
 BUCHANAN, MICHIGAN

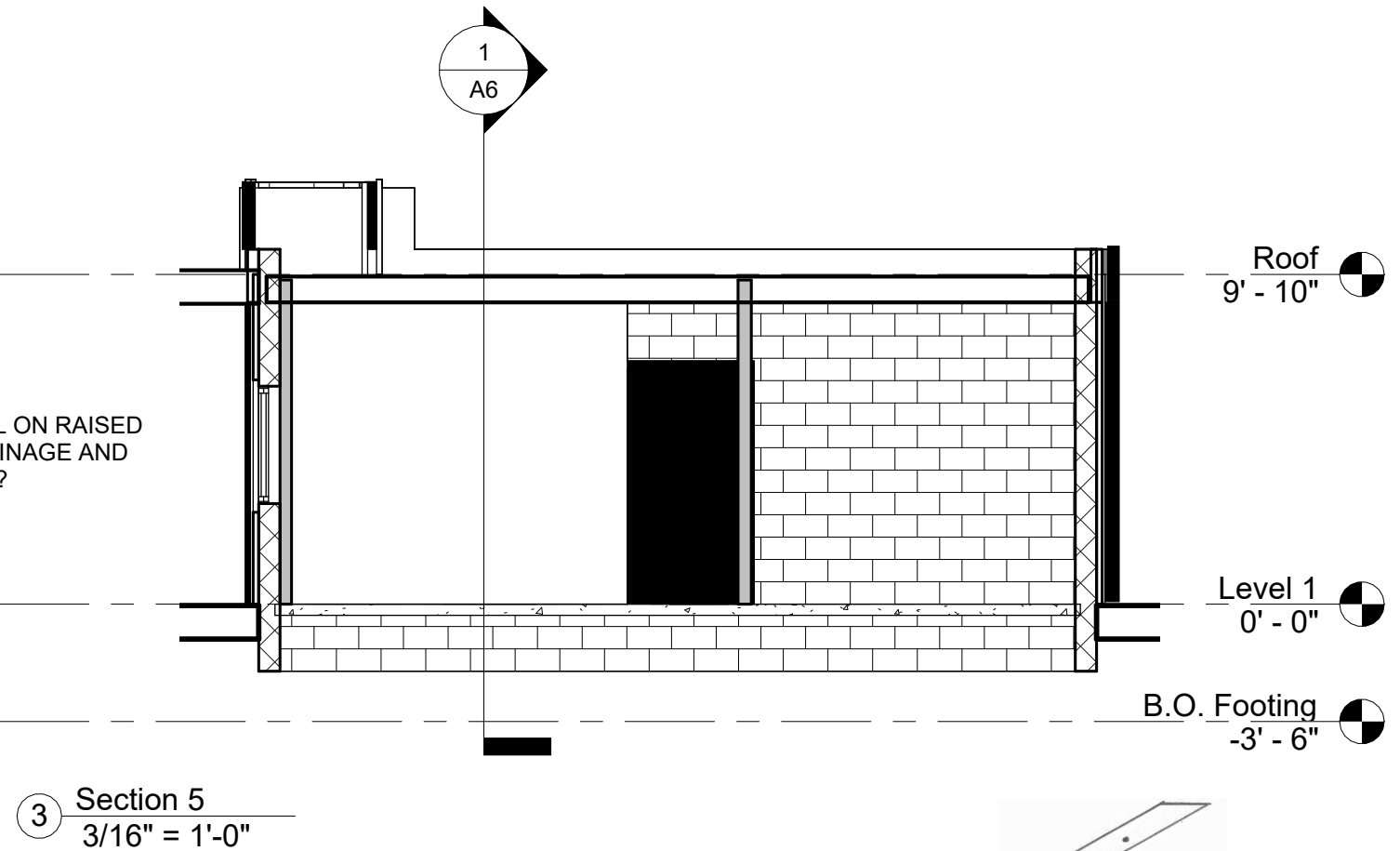




1 Section 1
3/16" = 1'-0"



2 Section 3
3/16" = 1'-0"



3 Section 5
3/16" = 1'-0"