

Deer Hollow Development
Town Of Bartonville
Residential Construction Inspection Checklist
June 12, 2023

Inspector: Bart Wilson- Westwood

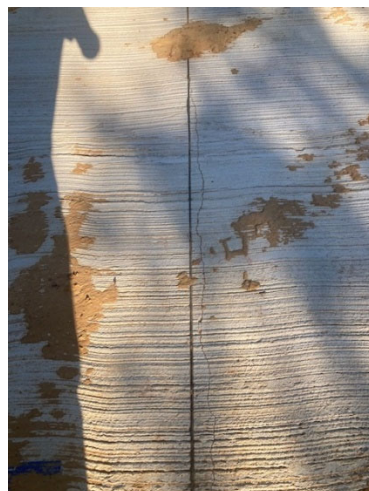
Contractor: Randy Petty

Items reviewed:

- Pavement Conditions
- Erosion Control
 - All bmp devices are installed per SW3P such as grouted rock rip rap and rock filter dams.
- Ditch Grading
- Signing
- Striping

Issues Noted:

- The first 500 ft of Ginger Rd. has cracks following each transverse joint throughout this entire section.



- There is no seeding for erosion control or Curlex installed on this project at this time

Concerns:

- The cracking adjacent to the expansion joints will create future maintenance issues based on what we have witnessed on past projects. This could be caused by a delay of saw cutting of the pavement after placement
- Areas around the ditches are currently bare and could erode in extended rainfall conditions.

Recommendations:

- Extend maintenance terms of the contract to monitor pavement conditions. While this may not be extended to a period that would encompass future issues it would allow monitoring. Anything short of replacement could possibly make the condition worse. Epoxy sealing could also be explored
- For erosion control, either seeding or erosion control blankets could be utilized.