

# Denton County

## ESD No. 1

### Monthly Report



Monthly Activity Report

OCTOBER

2024



**Table of Contents**

<b>Basic Analytics</b>	<b>Page</b>
DCESD 1 Personnel	3
Incident Counts	4-5
Municipality Volume	6
Response Times – 90 <sup>th</sup> Percentile and Average Response Times	7
Community Outreach Events & Fire Inspection Reports & Training Division	8



**DCESD1 Personnel**

**Operations**

Battalion Chiefs	3
Officers - Captains	9
Apparatus Operators (Engineers)	9
Full-Time Firefighters (active)	29
Part-Time Employees (active)	10
Injuries/light duty/inactive	2
<b>Total Members</b>	<b>62</b>

**Fire Administration**

Fire Chief	1
Assistant Chief	1
Division Chiefs	3
Administrative Assistant	1
Director of Communications & Public Outreach	1
<b>Total</b>	<b>7</b>

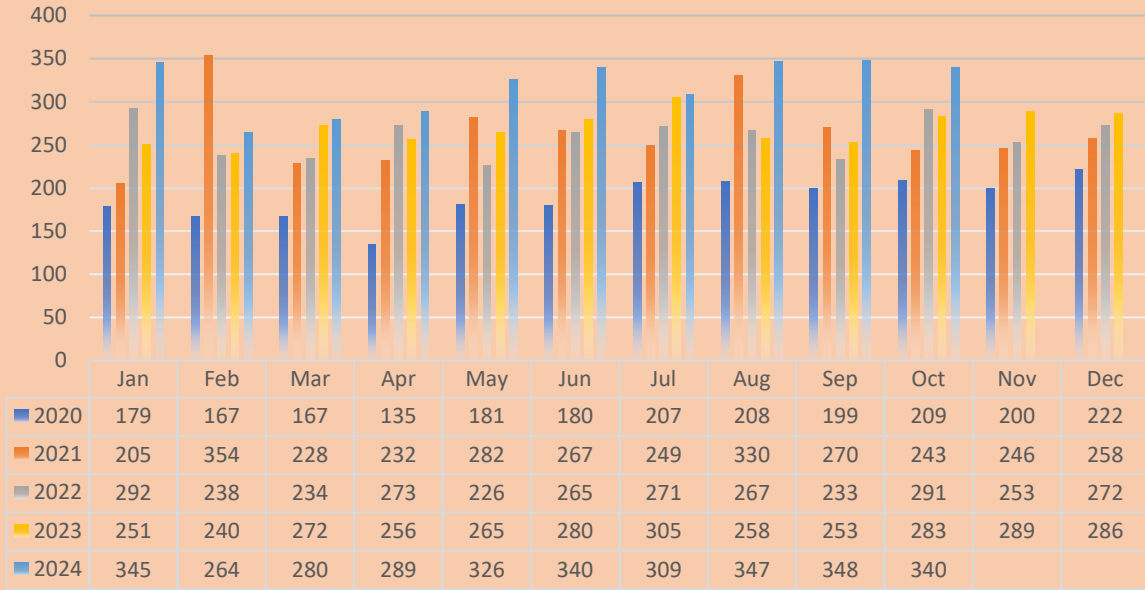
**Department Paid Total 69**

Sworn Staff	67
Civilians	2
Operational Volunteers	5
<b>Department Total</b>	<b>74</b>

**DCESD Total Incident Count**

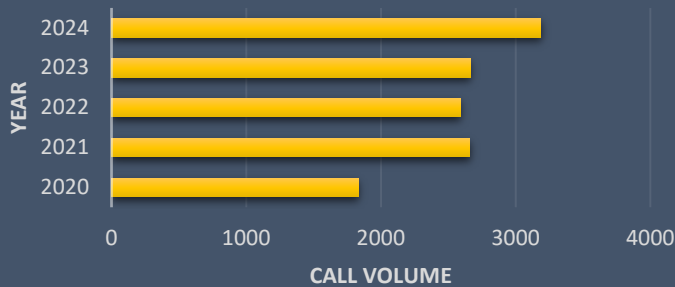


**COMPARISON OF INCIDENTS  
OVER THE PAST 5 YEARS MONTH-BY-MONTH**



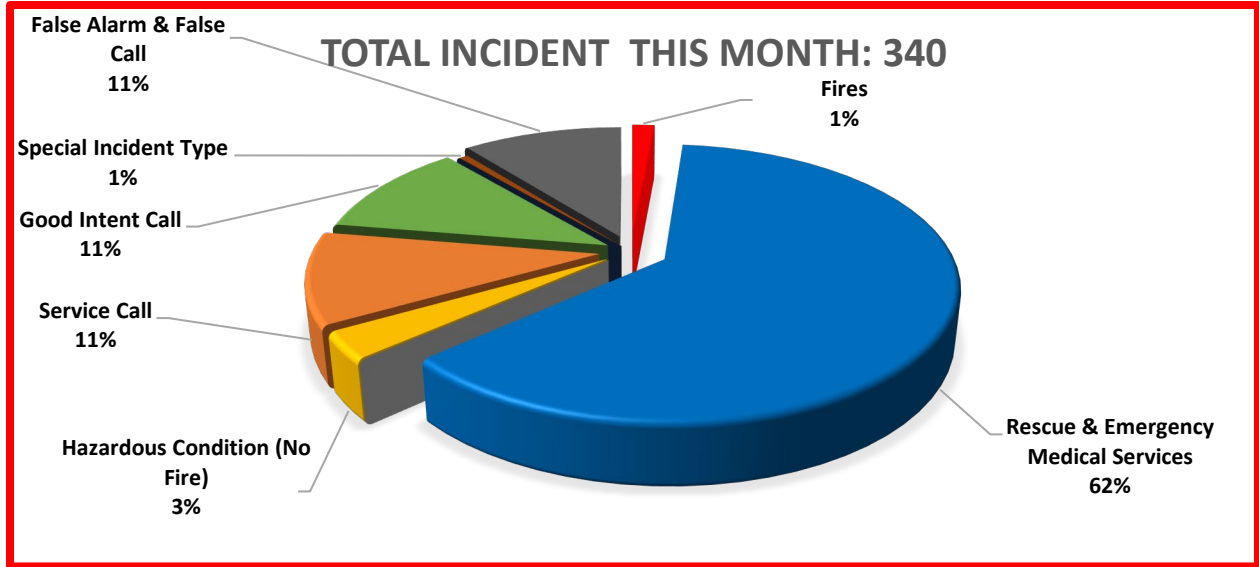
**Year-to-Date Totals**

**Year-To-Date Comparison of  
Incidents over 5 Years**

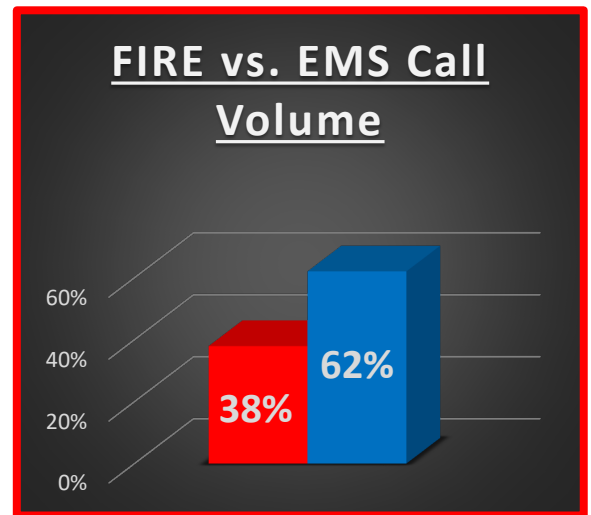


DCESD	YTD	Year End
2020	1832	2254
2021	2660	3164
2022	2590	3115
2023	2663	3238
<b>2024</b>	<b>3188</b>	

**INCIDENT STATISTICS**



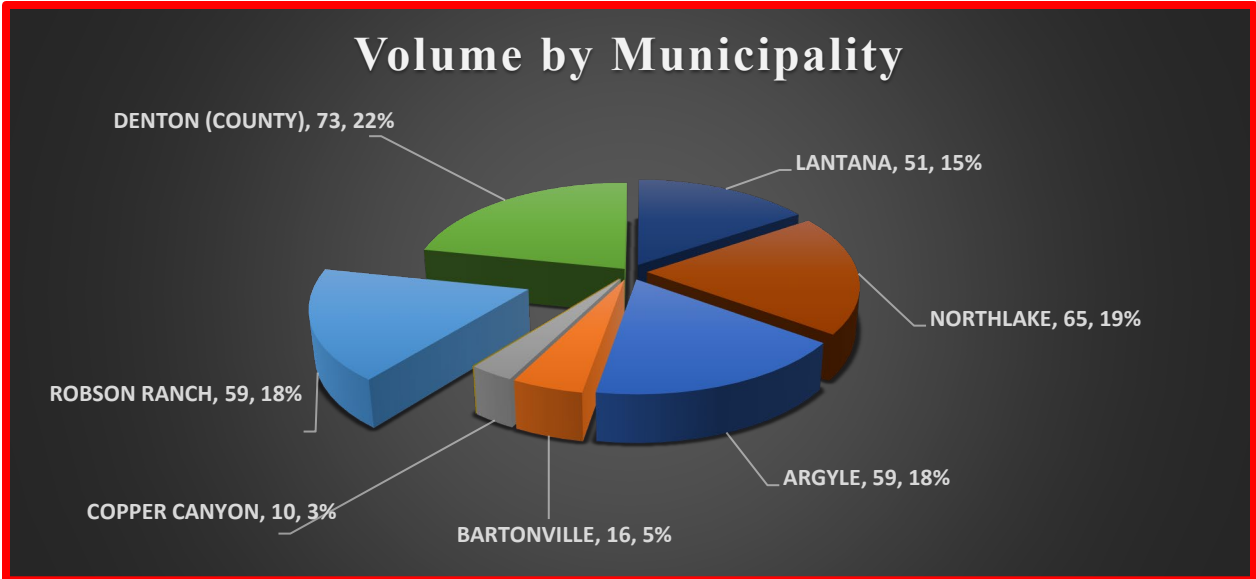
Major Incident Types		
Fires	100's	5
Overpressure rupture, explosion – no fire	200's	0
Rescue & Emergency Medical Services	300's	211
Hazardous Condition (No Fire)	400's	11
Service Call	500's	37
Good Intent Call	600's	38
False Alarm / False Call	700's	36
Severe Weather & Natural Disaster	800's	0
Special Incident Type	900's	2



**Percentage of Overlapping Calls**

Overlapping Calls	
# OVERLAPPING	% OVERLAPPING
40	12%

**Municipality Call Volume Breakdown**



NFIRS INCIDENT TYPE	NFIRS #	ARGYLE	BARTONVILLE	COPPER CANYON	CORRAL CITY	LANTANA	NORTHLAKE	Robson Ranch	DENTON COUNTY
		Fire	2				1		1
Overpressure Rupture, Explosion, Overheat	200's								
Rescue & Emergency Medical Services	300's	34	9	5		30	40	40	51
Hazardous Condition	400's	4	2			2	2		1
Service Call	500's	9	2	2		6	1	10	6
Good Intent Call	600's	7	3	3		4	9	3	6
False Alarm False Call	700's	2				8	13	5	8
Severe Weather & Natural Disaster	800's								
Special Incident Type	900's	1							
<b>Municipality Totals</b>		<b>59</b>	<b>16</b>	<b>10</b>	<b>0</b>	<b>51</b>	<b>65</b>	<b>59</b>	<b>73</b>

**NFIRS Breakdown**

**100's – Fire Group**

Structure, wildland, and vehicle fires.

**200's – Overpressure Rupture, explosion, overhear – No Fire Group**

Steam, air, gas, chemical, explosions(no-fire), etc.

**300's – Rescue & Emergency Medical Service Group**

EMS Incidents, lock-in, missing person, extrication, motor vehicle accidents, rescues, etc.

**400's – Hazardous Conditions – No Fire Group**

Gas leak, chemical hazards, power line down, biological incident, bomb removal, etc.

**500's – Service Call Group**

Person in distress, water evacuation, smoke/odor removal, animal rescue, assist PD, etc.

**600's – Good Intent Group**

Cancelled en route, controlled burning, wrong location, prescribed burn, etc.

**700's – False Alarm & False Call Group**

False alarm, malicious false call, unintentional system/detector operation and malfunction

**800's – Severe Weather & Natural Disaster Group**

Flood, wind, lightning, natural disaster assessment

**900's – Special Incident Type**

Citizen Complaint, Code Violation

**Incident Response Times**



**90<sup>th</sup> Percentile Assessment**

Lights and Sirens – 90 <sup>th</sup> Percentile Time (Dispatch to Arrival)	
Overall Fire/EMS	10:38
Overall FIRE	10:40
Overall EMS	10:30

**Internal Compliance Goal:** Less than 8-minute response time from dispatch to first unit on arrival time. Assessment is performed by taking the total number of incidents where lights and sirens were utilized while responding to the incident.

**NFPA 1710 Response Recommendations:** Key performance objectives for...

**FIRE Response:** (bunker gear required)

1. Turnout time: < 80 seconds  
(1 minute: 20 seconds)
2. First Unit on scene: < 240 seconds  
(4 minutes)

**EMS Response:** (no bunker gear required)

1. Turnout time: < 60 seconds  
(1 minute)
2. First Unit on scene: < 240 seconds  
(4 minutes)

90th Percentile per Municipality					
ARGYLE	BARTONVILLE	COPPER CANYON	CORRAL CITY	LANTANA	NORTHLAKE
10:16	9:38	8:50	0:00	9:31	11:10

**Average Response and Turnout Time Assessment**

RESPONSE MODE	TOTAL RESPONDING UNITS	AVERAGE RESPONSE TIME (minutes)
Initial Lights and Sirens, Downgraded to No Lights or Sirens	3	14:31
Initial No Lights or Sirens, Upgraded to Lights and Sirens	0	0:00
<b>Lights and Sirens</b>	<b>282</b>	<b>7:07</b>
No Lights or Sirens	21	5:15

Average Response Time per Municipality					
ARGYLE	BARTONVILLE	COPPER CANYON	CORRAL CITY	LANTANA	NORTHLAKE
6:03	6:41	7:31	0:00	6:05	8:16

**Public Education**



**Community Outreach Events**

Fire Station Tours	3
Public Education Events	27
Ride Along (EMS Students/Orientation)	12
Community CPR Classes	2
- Total CPR Students	<b>20</b>
<b>Total Events</b>	<b>44</b>

**Training Division**

<b>Total ISO Training Hours Logged / Month</b>	<b>1986.9</b>
- EMS Training Hours Logged / Month	512
- FIRE Training Hours Logged / Month	1365.9
- Administrative Training / Month	109

**Fire Inspection Report**

INSPECTION TYPE	MONTHLY	YEAR TO DATE
*Fire Protection- Fire Alarm (Total)	0	2
*Fire Protection Commercial Sprinkler (Total)	2	20
*Annual (Total)	1	6
*Residential Sprinkler (Total)	14	96
*Fire Protection Inspection: Underground (Total)	0	8
* Controlled Access (Total)	1	3
* Certificate of Occupancy (Total)	6	51
* Compliant (Total)	0	2
<b>Total:</b>	<b>24</b>	<b>188</b>