



Rhode Island Energy™

a PPL company

# RI League of Cities and Towns Meeting

April 14, 2026

# A Local, Large Employer and Community Partner



**500k**

Electricity  
customers



**272k**

Gas customers



**\$3.3M**

in charitable giving  
since 2022



**1,300+**

union & non-union  
employees



**~1,000**

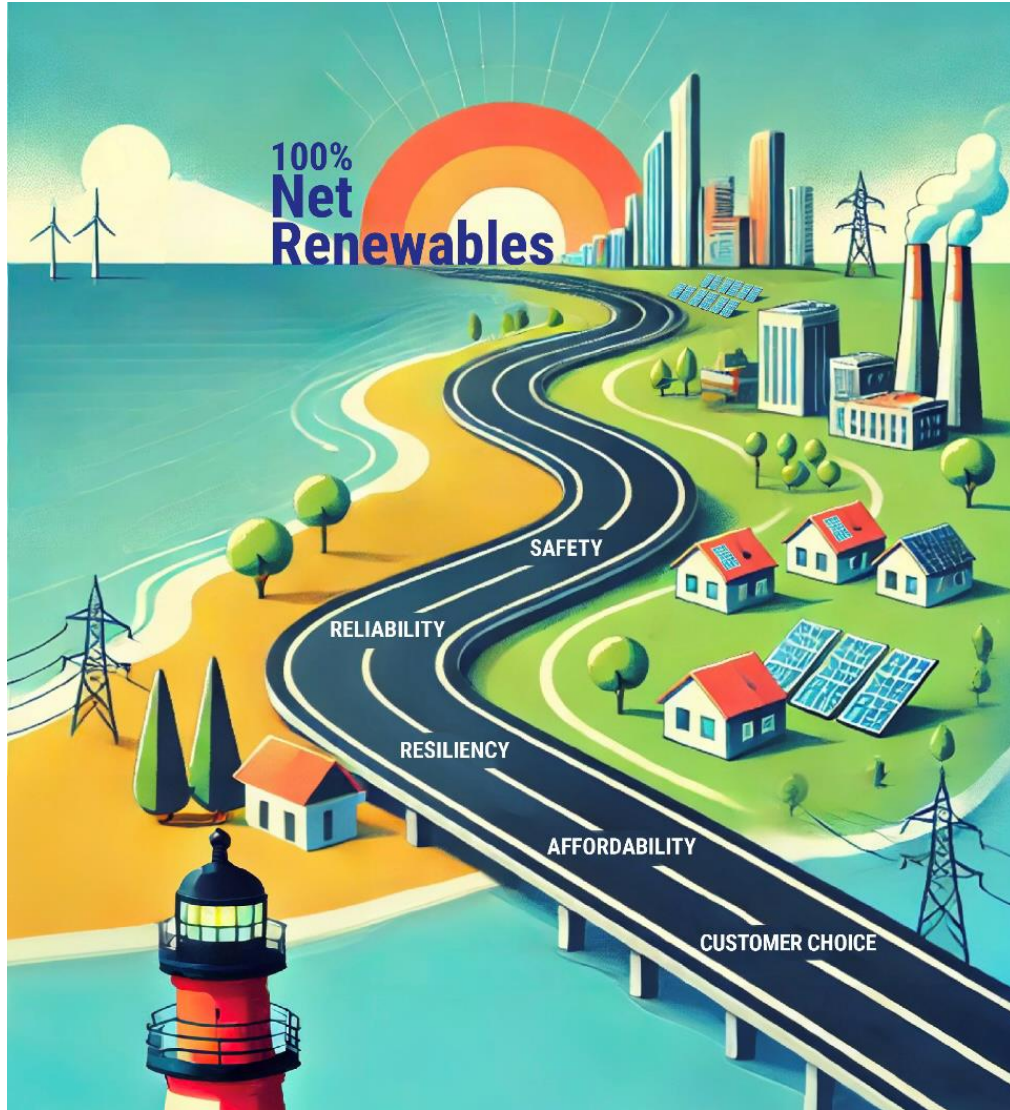
hours of employee  
volunteering



**~\$1B**

property taxes paid  
in 2025

# Rhode Island's Destination is Clear, But the Pathway is Less So



Rhode Island has nation-leading goals

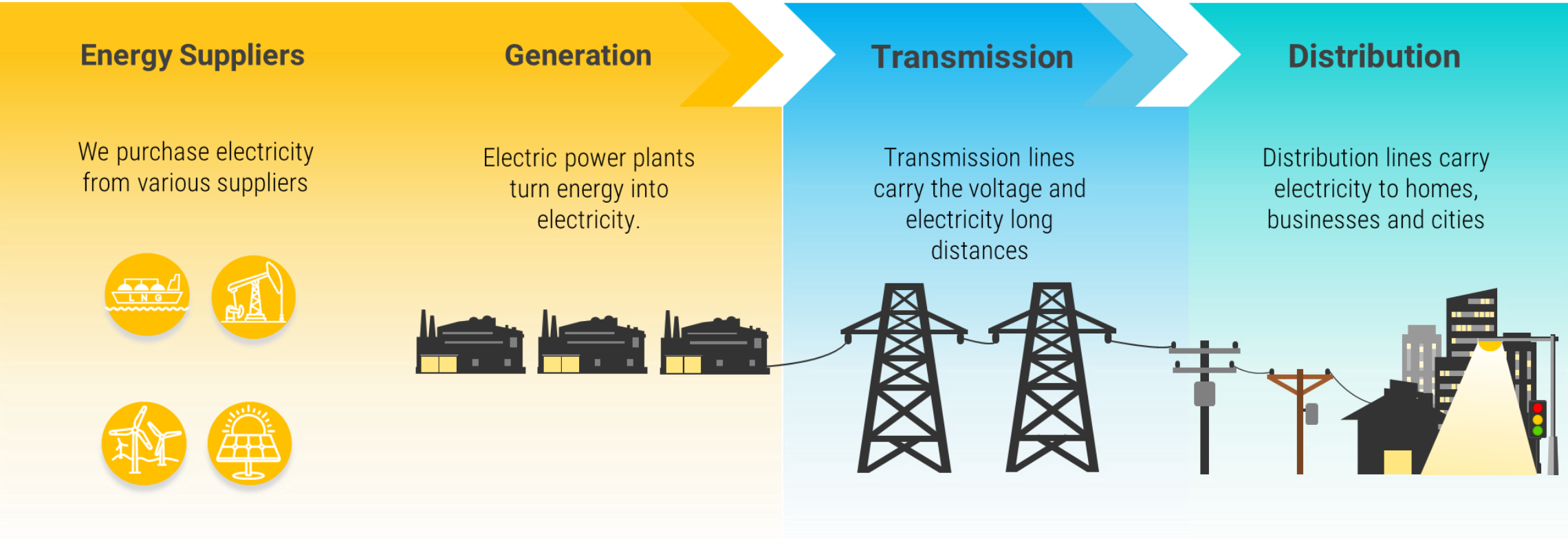
Economy-wide decarbonization and a goal of 100% renewables by 2033 is laudable, but the way there is winding with multiple challenges including:

- Safety
- Reliability
- Customer choice/acceptance
- Resiliency
- Affordability

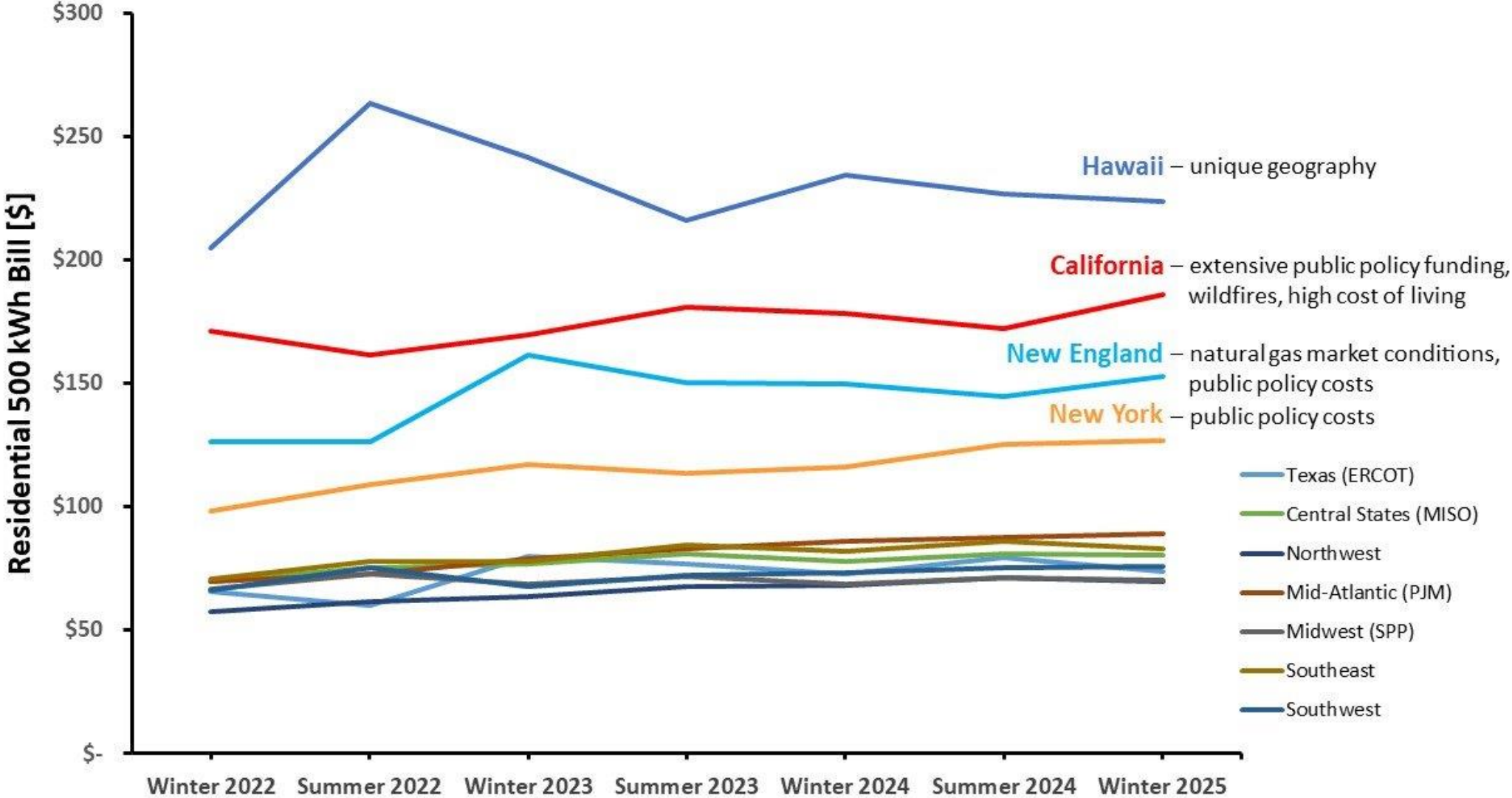
# Rhode Island's Electric Grid

**Delivery**  
(RIE owns and maintains this portion)

**Supply**  
(RIE does not control this portion)

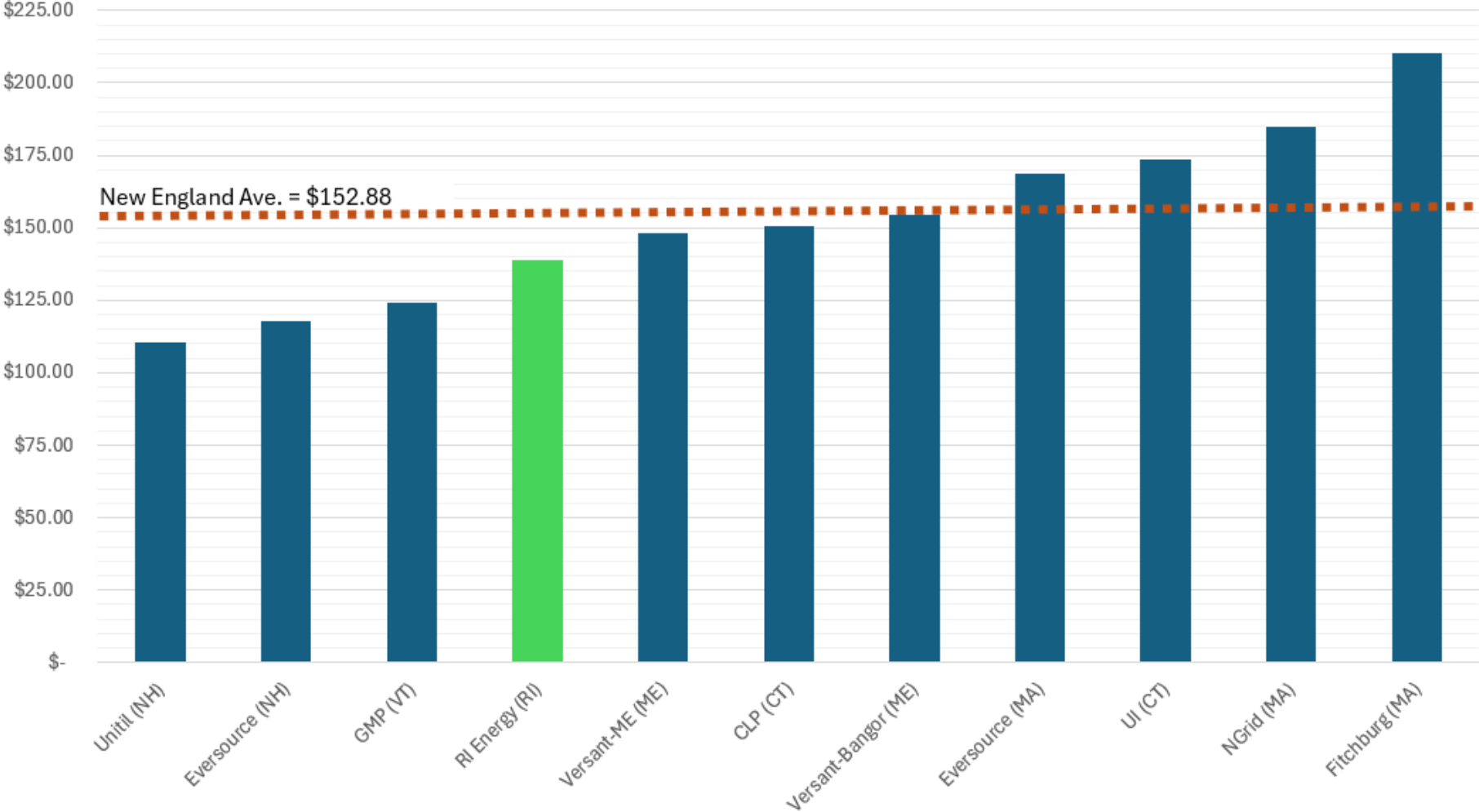


# New England is 3<sup>rd</sup> most expensive region



# Rhode Island at or below regional average

New England Residential Electric Rates, July 1, 2025  
(500 kWh/mo.)



# Rhode Island Energy (RIE) Electric Bill Components: SUMMER 2026\*

## WHAT'S IN MY ELECTRICITY BILL? LET'S UNPACK THE FACTS

ABOUT **26%** OF YOUR BILL THIS SUMMER IS UNDER RIE'S DIRECT CONTROL



### LOCAL DELIVERY – 26%

Delivery charges support the construction, maintenance and safe operation of critical energy infrastructure across Rhode Island. These investments are vital to the local delivery of electricity that powers homes and businesses, as well as modernizing the grid for a clean energy future. It also includes costs associated with providing customer service, billing, and metering services.

ANOTHER **18%** OF YOUR BILL THIS SUMMER IS UNDER RIE'S PARTIAL CONTROL



### TRANSMISSION – 18%

Transmission charges, set by the Federal Energy Regulatory Commission, cover the cost of moving electricity across New England's regional grid to the local RIE distribution system.

**56%** OF YOUR BILL THIS SUMMER IS DRIVEN BY SUPPLY COSTS, TAXES, AND STATE MANDATES—FACTORS BEYOND RIE'S CONTROL



### SUPPLY – 33%

About 33% of the average residential electric bill covers the cost to purchase electricity on the market, as RIE is not allowed to own generation resources.

**RIE does not markup supply costs** – they are passed directly to customers, dollar for dollar.

These costs are largely driven by fuel markets, regional pipeline constraints, and availability of renewable energy sources to comply with State law.



### STATE MANDATES & TAX – 23%

About 23% of the typical residential electric bill consists of **state-mandated costs to support clean energy, efficiency and low-income assistance goals**. These are included on the "Delivery" section of customer bills as follows:

- RE Growth Program Charge
- LIHEAP Enhancement Charge
- Renewable Energy Distribution Charge
- Energy Efficiency Programs

In addition, **RIE is required to collect a Gross Earnings Tax** for the State of Rhode Island, and that is shown as a separate line item on customer bills.

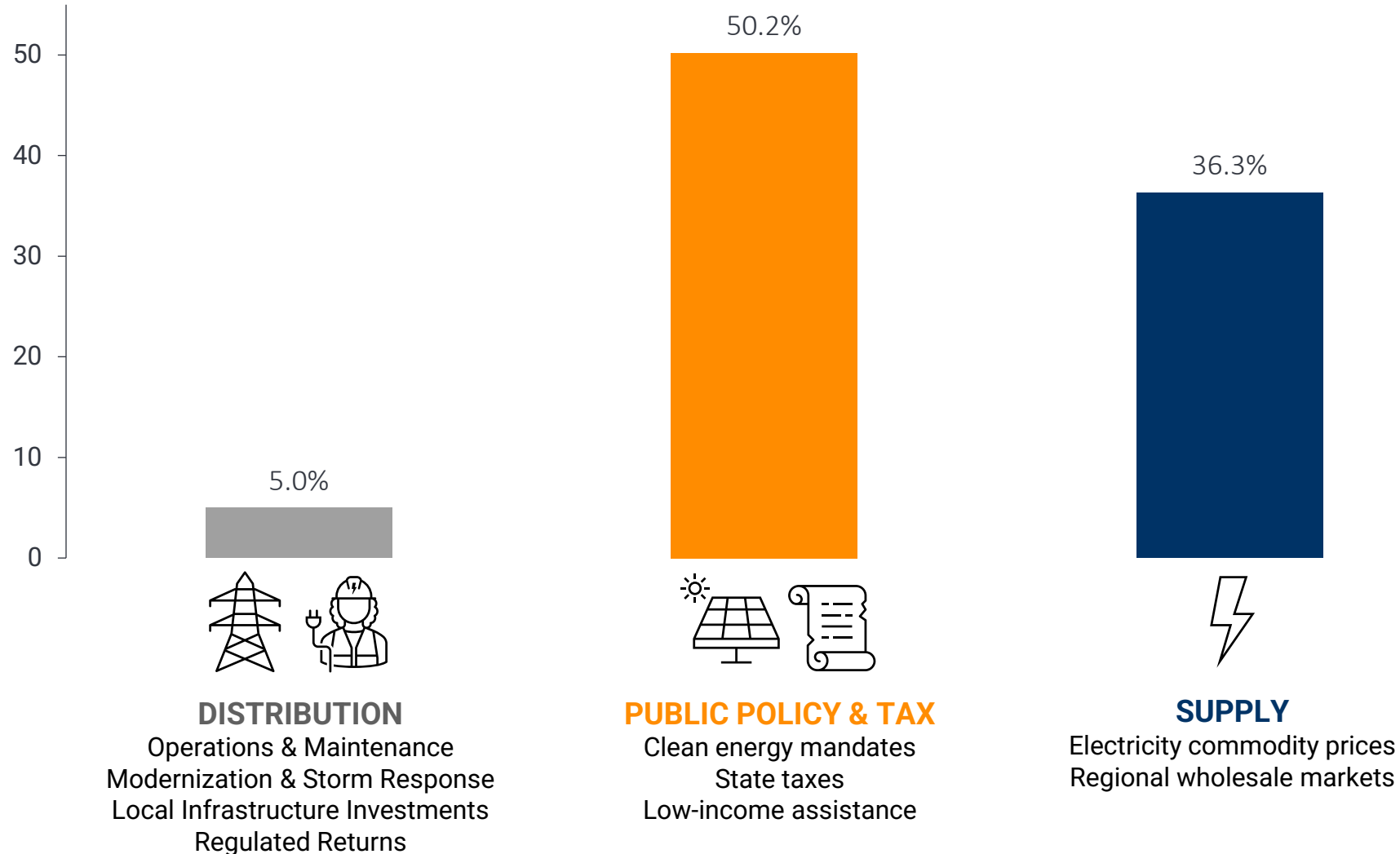


**UTILITY PROFIT IS NOT DRIVING COSTS**  
 In a typical billing period this summer, **less than 2.4%** represents utility profit.

\*Customer bills vary by usage. Figures here based on 500kWh/month usage with current summer rates for a residential customer.

# Supply & Public Policy Bill Impacts Have Grown Faster Than Distribution

## Growth in Bill Impacts, 2021-2026

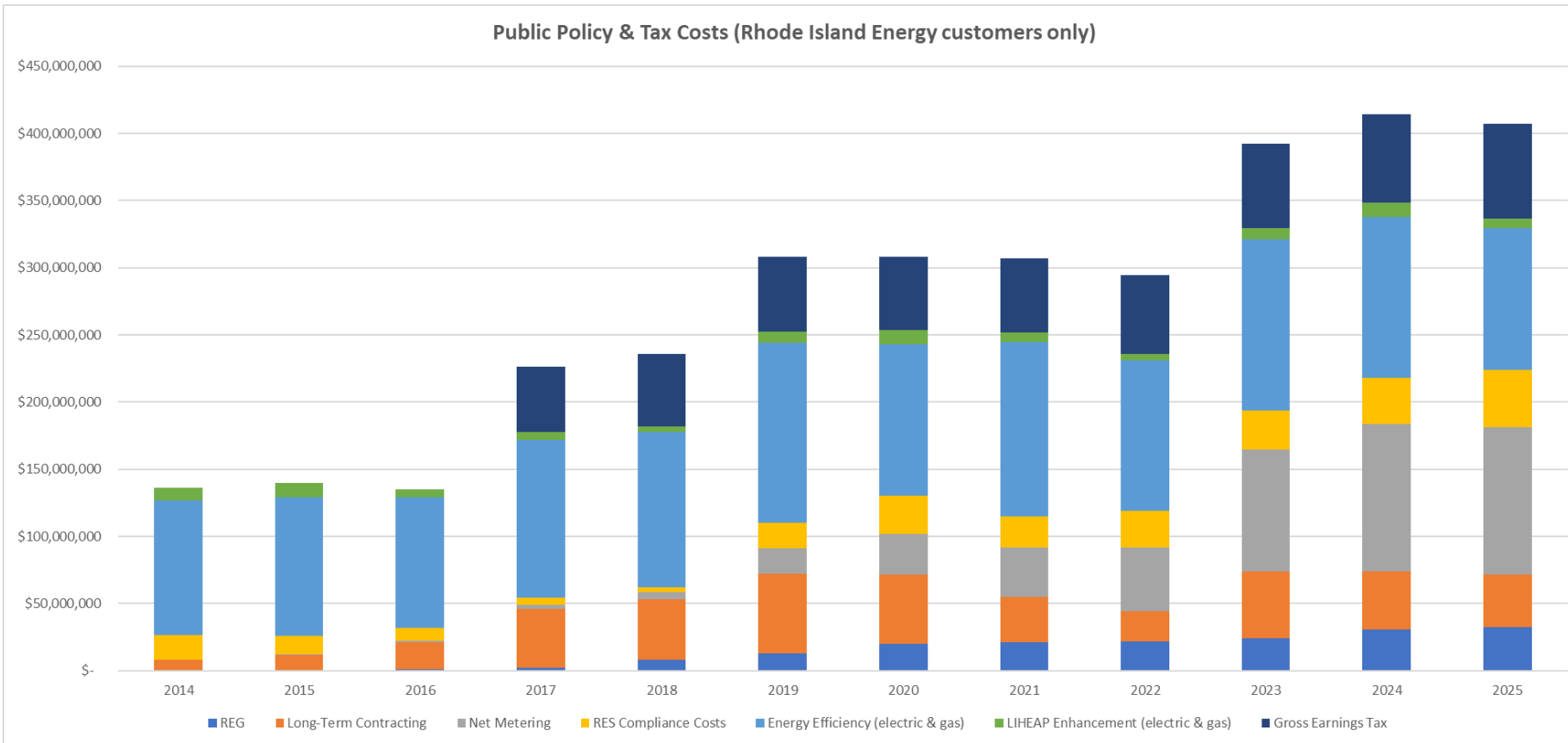


# > \$3.3B in policy & tax charges collected between 2014-2025<sup>\*^</sup>

These policies can support important energy, economic, and environmental benefits over time...

...but they also come with a significant cost to our customers today and:

- are beyond the utility's ability to control;
- may not be subject to regulatory scrutiny;
- may not be cost beneficial; and
- drive further need for critical grid investments.



\* The values above reflect RIE customer costs only and does not include GET paid between 2014-2016 (data not available); thus, this chart understates total statewide policy costs and taxes collected from Rhode Island electric customers during this period.

<sup>^</sup> 2025 net metering program costs are not available at the time of publication; this chart assumes 2025 net metering program costs at 2024 levels.

# Public Policy Charges

| Delivery Details                      |              |
|---------------------------------------|--------------|
| <b>Rate: A-16 Residential-Std Ofr</b> |              |
| Customer Charge                       |              |
| RE Growth Program Chg                 |              |
| LIHEAP Enhancement Chg                |              |
| Distribution Energy Chg               | 1,726 kWh at |
| Renewable Energy Dist Chg             | 1,726 kWh at |
| Energy Efficiency Programs            | 1,726 kWh at |
| Transition Charge                     | 1,726 kWh at |
| Transmission Charge                   | 1,726 kWh at |
| <b>Total Delivery Charges</b>         |              |

## April 2026 Residential Bill (500 kWh/mo.)

Renewable Energy Standard (embedded in Supply charges) \$8.02

RE Growth Program \$3.38

LIHEAP Enhancement \$0.78

Net Metering (embedded in Renew. Dist. Chg.) \$7.97

Long-Term Renewable Contracts (embedded in Renew. Dist. Chg.) \$1.77

Energy Efficiency Programs \$6.00

Gross Earnings Tax \$5.77

**TOTAL POLICY & TAX \$33.68**

The screenshot shows a utility bill from NextEra Energy. A red circle highlights the 'Billing Summary' and 'Delivery Details' sections. The 'Billing Summary' shows a total amount due of \$191.15 as of 1/27/25. The 'Delivery Details' section lists various charges: Customer Charge (6.00), RE Growth Program Chg (4.02), LIHEAP Enhancement Chg (0.78), Distribution Energy Chg (36.42), Renewable Energy Dist Chg (13.79), Energy Efficiency Programs (7.53), and Transmission Charge (23.46). The total delivery charges are \$92.01. The 'Gross Earnings Tax' is listed as \$428.86 at a rate of 0.041667.

Note: Illustrative Sample Bills

| Billing Summary   |              |
|---|--------------|
| Date: A-16 Residential  |              |
| Customer Charge   | 6.00         |
| RE Growth Program Chg   | 4.02         |
| LIHEAP Enhancement Chg  | 0.78         |
| Distribution Energy Chg   | 36.42        |
| Renewable Energy Dist Chg   | 13.79        |
| Energy Efficiency Programs  | 7.53         |
| Transmission Charge   | 23.46        |
| <b>Total Delivery Charges</b>   | <b>92.01</b> |
| Understanding Your Bill   |              |
| Customer Charge - The cost of providing customer related services such as meter reading and billing. These fixed costs are unaffected by the amount of electricity you use. |              |
| Distribution Energy Charge - The cost of delivering electricity from the beginning of the Company's distribution system to your home or business.                           |              |
| Paperless Billing Credit  |              |
| Gross Earnings Tax  |              |
| \$428.86 at 0.041667  |              |

Note: Several charges – including EE, GET, RE Distribution, and RES – are volumetric-based, i.e., monthly costs increase as energy consumption increases.

# Investment Drives Reliability, Modernization & Decarbonization

16% ▼

Frequency of Outages

---

Best in  
Northeast  
for shortest outage duration

**Improved Reliability**

~540k

advanced meters being  
deployed across state

---

~28,000

customer interruptions avoided  
via smart switching

**Integrating Advanced  
Technology**

20,600

distributed generation  
interconnections since '20

---

553 MW

nameplate renewable capacity  
interconnected since '20

**Supports  
Decarbonization**

# Blizzard Hernando

- 38" of snow & 70 mph winds
- 50,000 power outages
- 99% restoration in < 48 hours
- Beat national industry standards
- Faster recovery than neighboring states



## GOLOCAL Prov

Wednesday, February 25, 2026  
GoLocalProv News Team

### RI's Power Outages Restored Faster Than Other States

Give credit where credit is due.

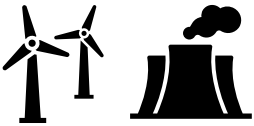
Rhode Island Energy has arguably been the most effective of any energy company on the East Coast in getting people's electricity restored after the record-setting blizzard.



In about two days, the number of outages — which hit a high of about 42,000 on Monday night — has decreased to 885.

# Opportunities for Collaboration

Lower energy costs & more reliable energy systems for Rhode Island businesses while still advancing climate goals



## **Support Renewable Energy Standard (RES) Reform (S-2764/H-7127 Art. 11)**

Recognizing zero-emissions resources (e.g., nuclear) and improved compliance flexibility can drive bill savings  
Prudent adjustments to 100% timeline could reduce compliance costs by ~\$1B+ compared to status quo  
Governor McKee (H-7127, Art. 11, Sec. 7 & 8) and Maj. Whip Tikoian (S-2764) have proposed separate, but aligned pathways



## **Support Regulated Utility Investment in Diverse Resource Mix (H-7889/S-2645)**

Empower RI to reduce price volatility, strengthen resource adequacy, support decarbonization safely, reliably & at lower cost.



## **Support Capitalizing Paving Costs To Reduce Bill Impacts (H-7127, Art. 11, Sec. 6)**

Gov. McKee's proposed FY27 budget includes savings of ~\$16M in 2027 and ~\$60M over five years



## **Support Reimbursement of Highway Utility Costs Using Federal \$ (H-7871/S-3132)**

Reimbursement was slashed to 50% in '22, shifting ~\$8M in costs to RIE customers; other utilities impacted, too.



## **Oppose Harmful Caps on Critical Energy Infrastructure (H-7881/S-2779)**

Utility infrastructure investments vital to safe, reliable energy systems are *already* fully regulated and not key bill driver  
Rhode Island businesses have felt the consequences of underinvestment in critical infrastructure...



## **Oppose Unlawful Caps on Utility Equity Returns (H-7888/S-2777)**

Proposed cap on ROE is unconstitutional and jeopardizes investment in critical energy infrastructure powering RI economy

# How do I access available resources?

- Visit our website at [RIEnergy.com/Toolkit](https://RIEnergy.com/Toolkit)
- Sign-up for budget billing and check eligibility for assistance programs, such as discount rates  
Call our local customer center at 1-855-743-1101 or email [CustomerService@RIEnergy.com](mailto:CustomerService@RIEnergy.com)
- Shop for your electricity supply  
Visit [www.ri.gov/app/dpuc/empowerri](https://www.ri.gov/app/dpuc/empowerri)
- Schedule your no-cost home energy audit  
Visit [RIEnergy.com/SaveAtHome](https://RIEnergy.com/SaveAtHome) or call 1-888-633-7947  
For discount rate customers, call 401-351-1800

The screenshot displays the Rhode Island Energy website's 'Customer Assistance Toolkit' page. At the top, there is a navigation bar with links for 'My Account', 'Outages and Safety', 'Ways to Save', and 'More'. A 'Report Emergency' button and a 'Sign In' button are also visible. The main content area features a video player with the title 'Understanding Higher Energy Costs' and a subtitle 'We'll help you power through challenging times'. Below the video, there are three columns of resources:

- Manage your bill:** Make your bill more predictable, access discounted rates, or request extra time to pay. We help you choose the options that work best for you. Links include: [Budget Billing](#), [Discount rates](#), [More time to pay](#), and [Shop for an energy supplier](#).
- Manage your energy use:** Managing your energy use is a practical way to control costs at any income level. From low-cost and no-cost savings tips to programs and rebates on energy-efficient products, we're here to help you conserve and save. Links include: [No-cost home energy assessment](#), [Energy savings programs and rebates](#), [Energy savings marketplace](#), and [No-cost energy savings tips](#).
- Get help paying your bill:** If you need assistance with your bill, we're here to support you. We offer programs and payment agreements for families regardless of your income. Links include: [Forgiveness Program](#), [Grant programs](#), [Shutoff protections](#), and [Customer support and assistance expos](#).

# THANK YOU!

Nicholas Ucci, Director of Govt. Affairs  
[nsucci@rienergy.com](mailto:nsucci@rienergy.com)

