



HOPE STREET / FERRY ROAD IMPROVEMENTS, BRISTOL RI

Bristol Historic District Commission
March 6, 2025

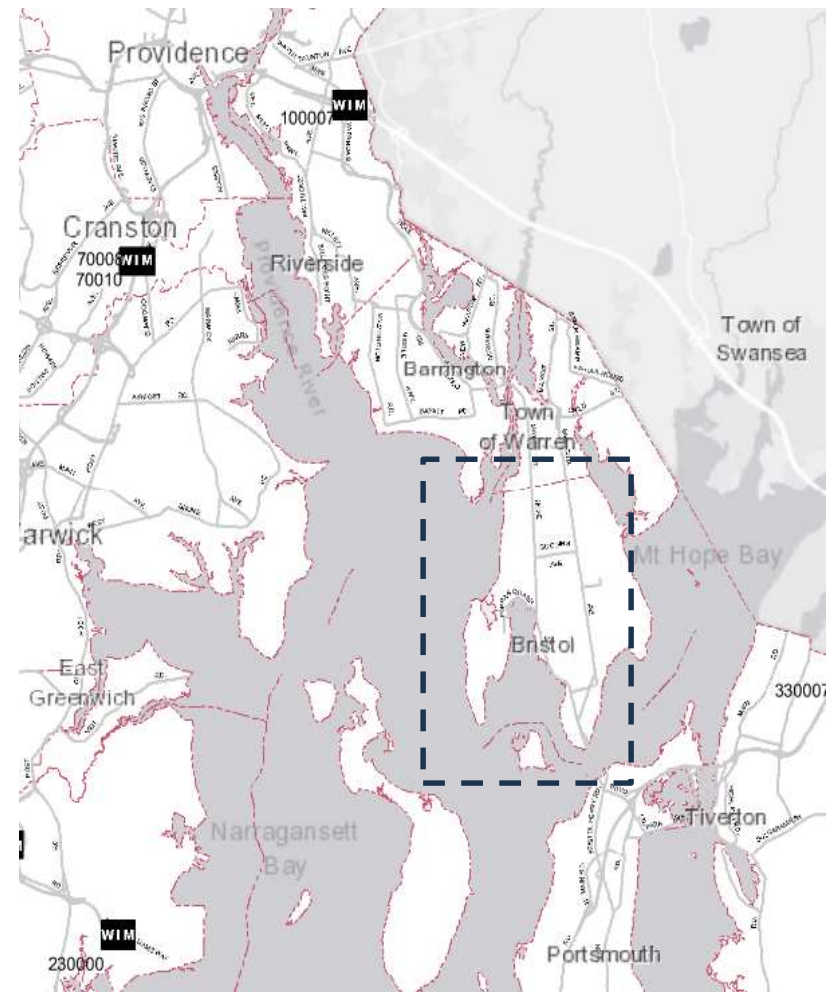
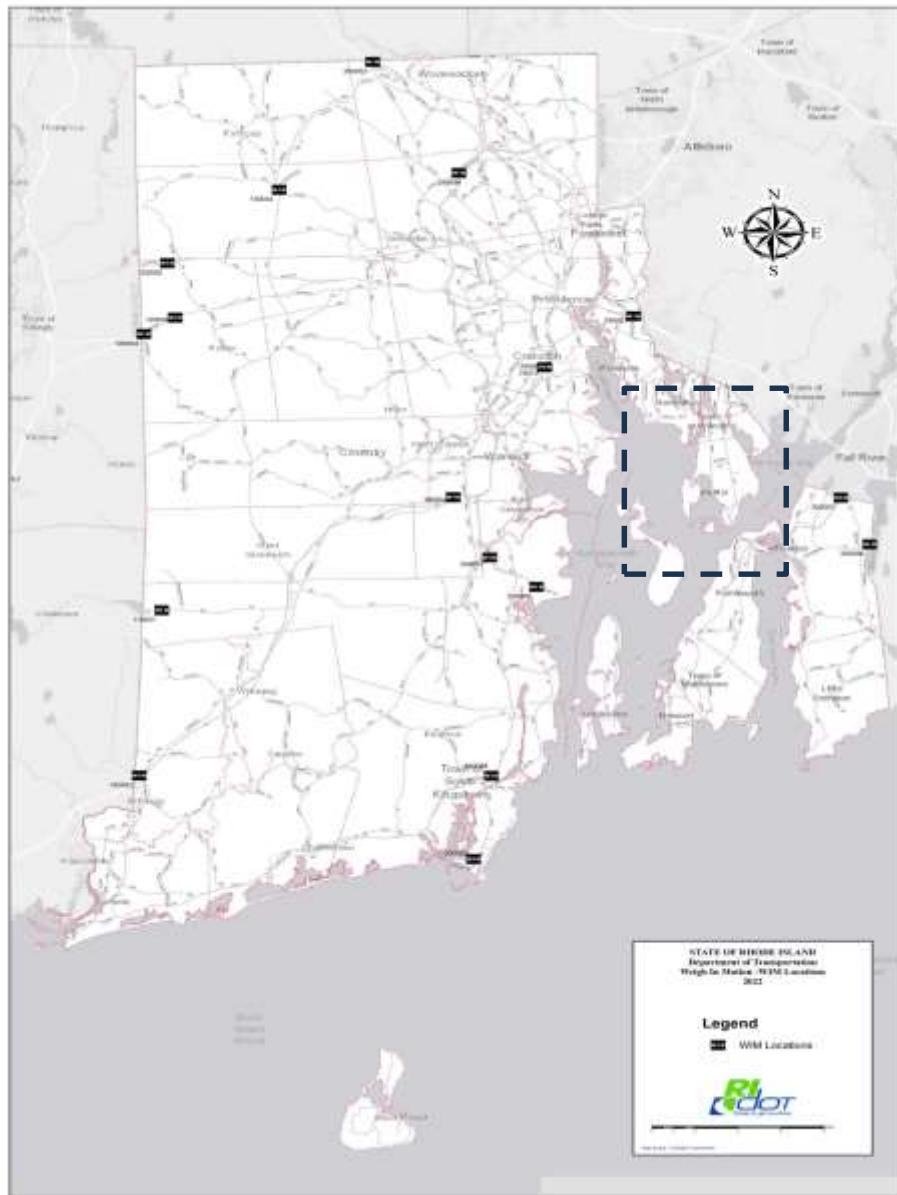


- **RIDOT Statewide Transportation Improvement Planning Project 1299**
- **Funding – FHWA, RIDOT, Town of Bristol, Scenic Byway Grant**
- **The project increases the access to many points of interest including Colt State Park; historic downtown business district; Herreshoff Marine Museum; Blithewold Museum; Roger Williams University; the Bristol Fourth of July parade; and its scenic waterfront.**



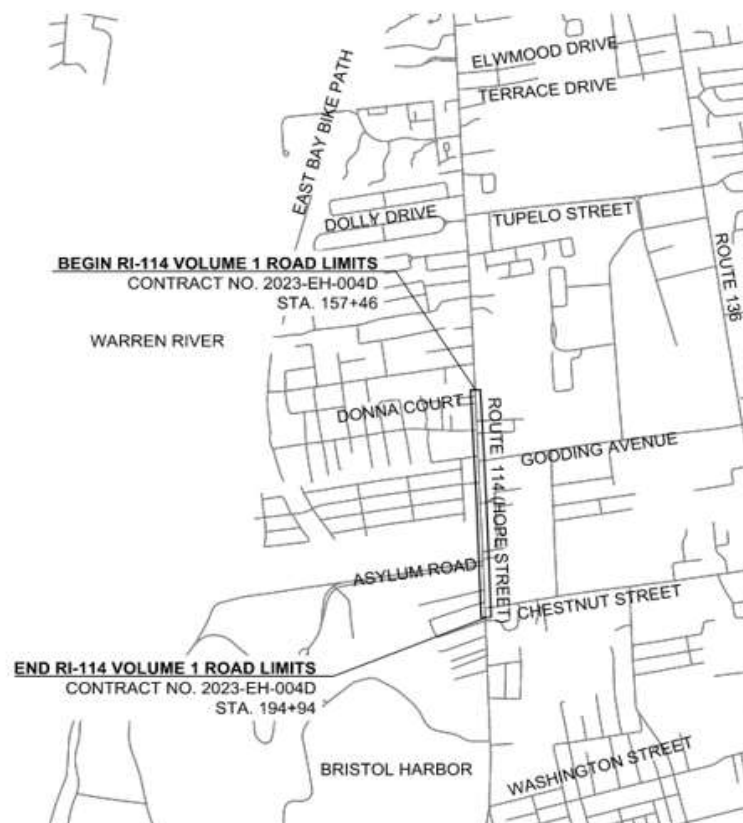
- Project spans approximately 4 miles to increase pedestrian safety, connectivity, and accessibility to the Bristol waterfront.
- Includes traffic and pedestrian signal upgrades in the northernmost section and proceeds into limited sidewalk and wheelchair ramp replacement in a historic designated area including restoration of stone path sidewalk.
- Adds new sidewalk in the southernmost section including repairing a seawall that includes restoration of a scenic overlook; and mill / pave the traffic lanes within the southern 2-mile stretch.
- Adds dedicated bicycle lanes throughout.
- Project includes minor drainage improvements; and a new pedestrian crossing beacon at Roger Williams University.
- Sidewalks ADA Compliance - Pedestrian improvements and accessibility to all features along the 4-mile stretch is understood as a priority for RIDOT and local officials.

Project Location

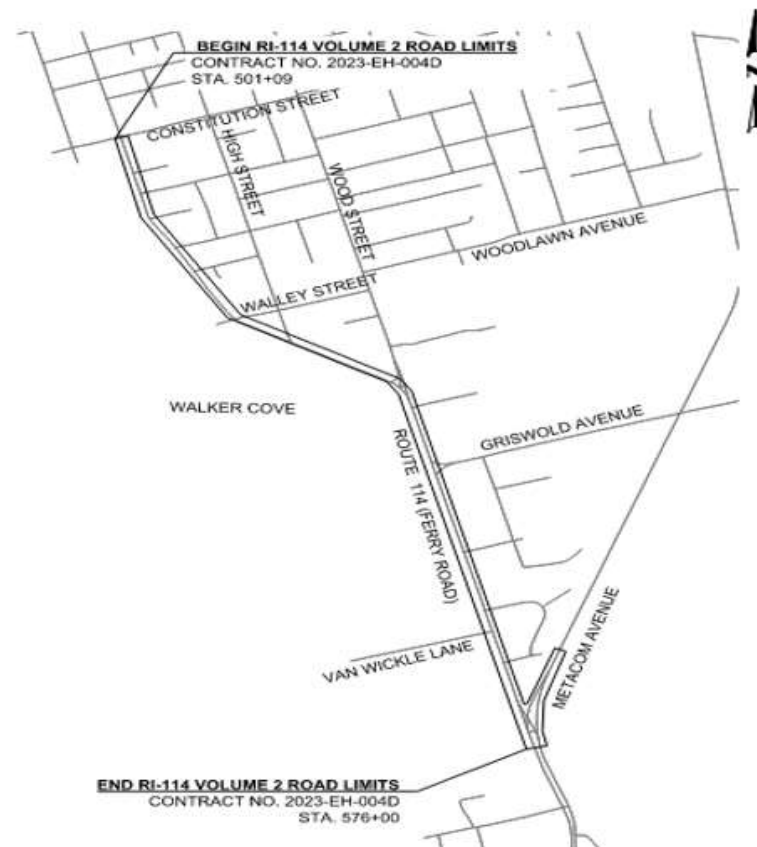


PTSID 0076L – Hope Street Improvements:

Volume I – Signal Improvements



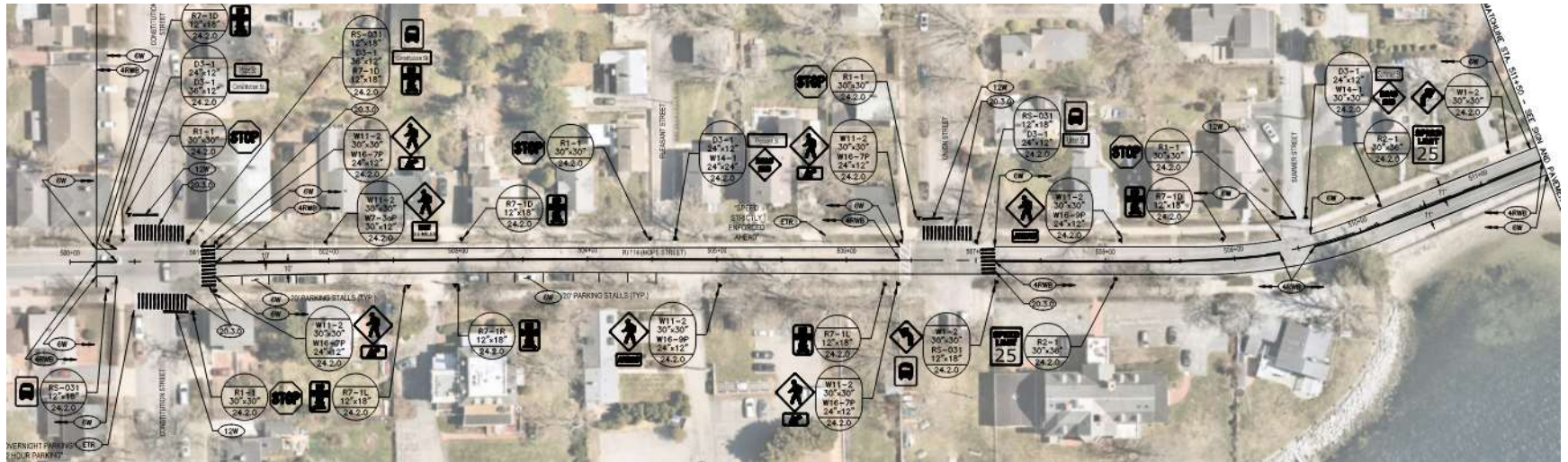
Volume II – Roadway Improvements

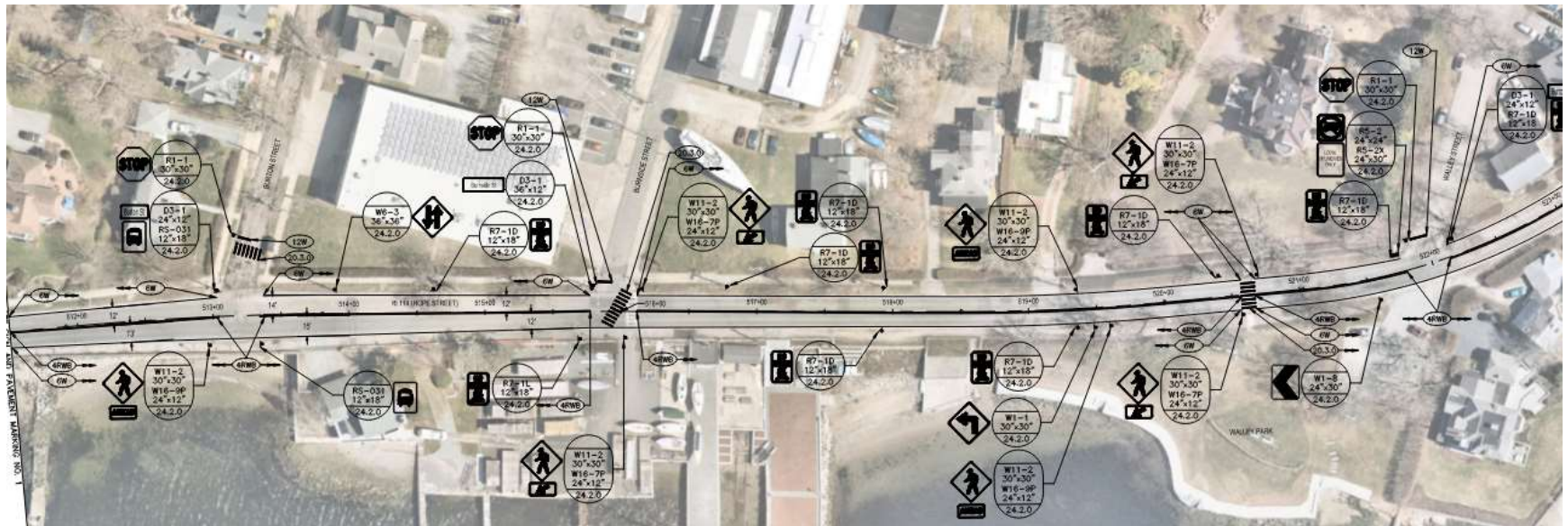


Volume II: Historic Area Plan Sheets 1 and 2



Historic Area – Plan 1:





Sidewalk Repair and New Installation Needs







Post 1938 Hurricane



1945 Reconstruction

Seawall Existing Condition

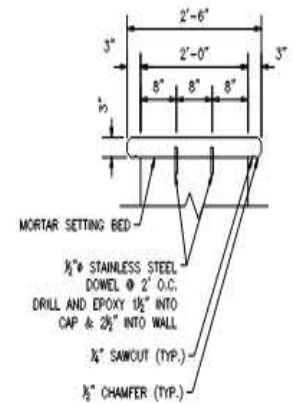
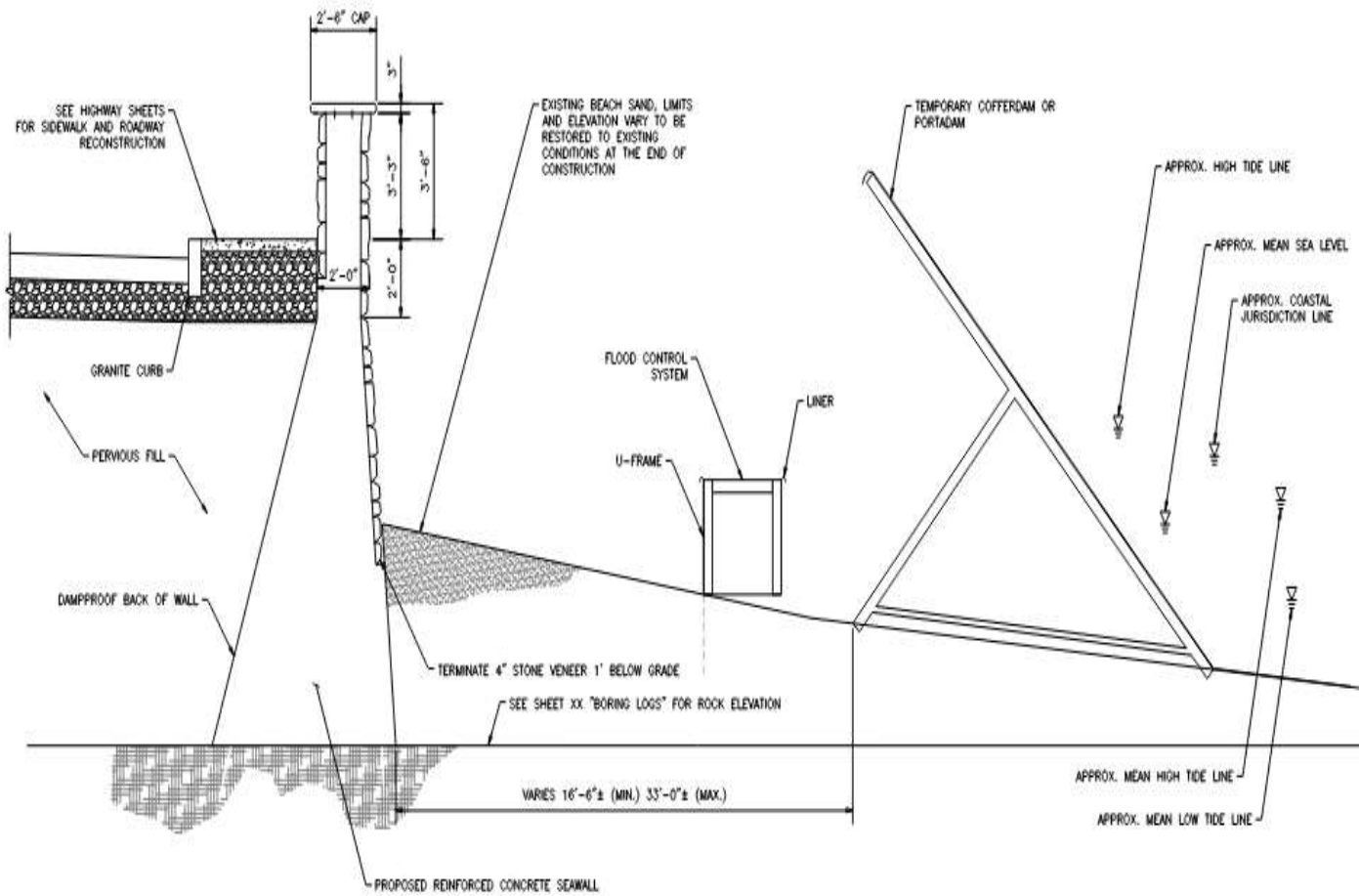






Seawall Repair and Replacement

DOC. NO.	PROJ. NO.	YEAR
00	01	XXXX-XXXX(00X) 202



FULL REPLACEMENT TYPICAL SECTION
SCALE: $\frac{1}{2}" = 1'-0"$

SEAWALL CAP DETAIL
SCALE: 1" = 1'-0"

Trees:

- Trees within the Historical District: (1) removal / replacement; (18) pruning / no action

ASSET #	ID #	Common Name	Genus, Species (sp - denotes undeterminable species)	dbh (in)	Removal (Y or N)	Health Rating	Location Description	Notes
21		Honey Locust	<i>Gleditsia triacanthos</i>	14"	Y	2 // 5	east side - 136 Hope Street - Seven Oaks	Note excessive lean. Removal recommended.
22		Horse Chestnut	<i>Aesculus hippocastanum</i>	30"	N	4 // 5	east side - 136 Hope Street - Seven Oaks	Deadwood pruning recommended.
23		Horse Chestnut	<i>Aesculus hippocastanum</i>	22"	N	3 // 5	east side - 136 Hope Street - Seven Oaks	Powerline clearance needed.
24		Horse Chestnut	<i>Aesculus hippocastanum</i>	23"	N	3 // 5	east side - 136 Hope Street - Seven Oaks	Deadwood pruning recommended.
25		Japanese zelkova	<i>Zelkova serrata</i>	16"	N	4 // 5	east side - 142 Hope Street / Richond - Herreshoff House	Needs major pruning. Shave roots.
26		Japanese zelkova	<i>Zelkova serrata</i>	21"	N	4 // 5	east side - 142 Hope Street / Richond - Herreshoff House	Powerline clearance needed.
27		Linden	<i>Tilia</i>	25"	N	4 // 5	east side - Herreshoff Museum	Powerline clearance needed.
28		Linden	<i>Tilia</i>	30"	N	4 // 5	east side - Herreshoff Museum	Powerline clearance needed.
29		Sycamore Maple	<i>Acer pseudoplatanus</i>	1.5" caliper	N	5 // 5	east side - utility pole #53	Small newer planting.
30		Japanese Flowering Cherry	<i>Prunus serrulata</i>	2.5"	N	5 // 5	east side - 212 Hope Street	Note stakes and wires should be removed.
31		Sycamore Maple	<i>Acer pseudoplatanus</i>	1.5" caliper	N	5 // 5	east side - 212 Hope Street	Note remove stakes.
32		Norway Maple	<i>Acer platanoides</i>	24"	N	4 // 5	east side - 218 Hope Street	Minor deadwood pruning recommended. Powerline clearance needed. Note invasive species.
33		Elm	<i>Ulmus</i>	16"	N	4 // 5	east side - 232 Hope Street	Deadwood pruning recommended.
35		Horse Chestnut	<i>Aesculus hippocastanum</i>	29"	N	3 // 5	east side - 234 Hope Street	Deadwood and structural pruning recommended.
34		Elm	<i>Ulmus</i>	22"	N	3 // 5	east side - 234 Hope Street	Needs to be pruned off of house. Note mirror attached to tree.
36		Norway Maple	<i>Acer platanoides</i>	26"	N	3 // 5	east side - 248 Hope Street	Reduction pruning recommended.
37		Tulip Poplar	<i>Liriodendron tulipifera</i>	18"	N	4 // 5	east side - 256 Hope Street	Deadwood pruning recommended.
38		Tulip Poplar	<i>Liriodendron tulipifera</i>	18"	N	4 // 5	east side - 256 Hope Street	Powerline clearance and deadwood pruning needed.
39		Norway Maple	<i>Acer platanoides</i>	23"	N	4 // 5	east side - 260 Hope Street	Powerline clearance and deadwood pruning needed.

- Thank you for your attention. Any questions?
- Elizabeth Correia - Principal Historic Preservation Specialist
- Jan J. Bak, Jr. - Project Manager 1