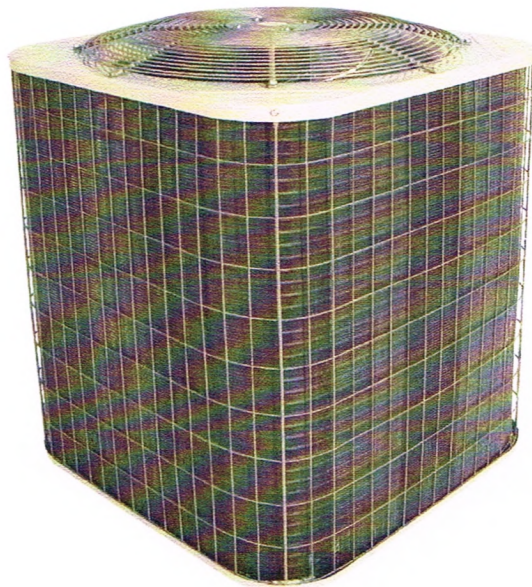


**PA13NA  
PA13PA**

**13 SEER Split-System Air Conditioner  
With R-410A Refrigerant  
Single & Three Phase  
1-1/2 To 5 Tons**

## Product Data



### FEATURES AND BENEFITS

#### AVAILABLE SIZES:

Nominal sizes are available from 018 through 060 to meet the needs of residential and light commercial applications.

#### CERTIFICATION:

All models are listed with UL, (U.S. and Canada), AHRI, and CEC.

#### ELECTRICAL RANGE:

Units offered in single phase 208/230v are 018-060, three phase 208/230v in 036, 048 and 060, and three phase 460v in 060.

#### FAN MOTOR:

The totally enclosed fan motor provides greater reliability under adverse conditions and dependable performance for many years. The permanent split capacitor type motor was designed for optimum efficiency. The motor was then qualified under extreme conditions to help ensure a long, reliable life.

#### CABINET:

A weather protective cabinet of prepainted steel is protected underneath by a galvanized coating and treated with a layer of zinc phosphate for a finish that will last for many years. All screws on cabinet exterior are coated for a long-lasting, rust-resistant, quality appearance.

#### UNIT DESIGN:

The copper tube, enhanced sine wave, aluminum fin coil is designed for optimum heat transfer. Vertical air discharge carries sound and hot condenser air up and away from adjacent patio areas and foliage. The base pan is designed for easy removal of water, dirt, and leaves.

#### COMPRESSOR:

Each compressor is protected with internal temperature- and current-sensitive overloads. An internal pressure relief valve provides high pressure protection to the refrigerant system. For improved serviceability, all models are equipped with a compressor terminal plug.

#### SERVICE VALVES:

Both service valves are brass, front seating type with sweat connections. Valves are externally located so refrigerant tube connections can be made quickly and easily. Each valve has a service port for ease of checking operating refrigerant pressures.

#### SERVICEABILITY:

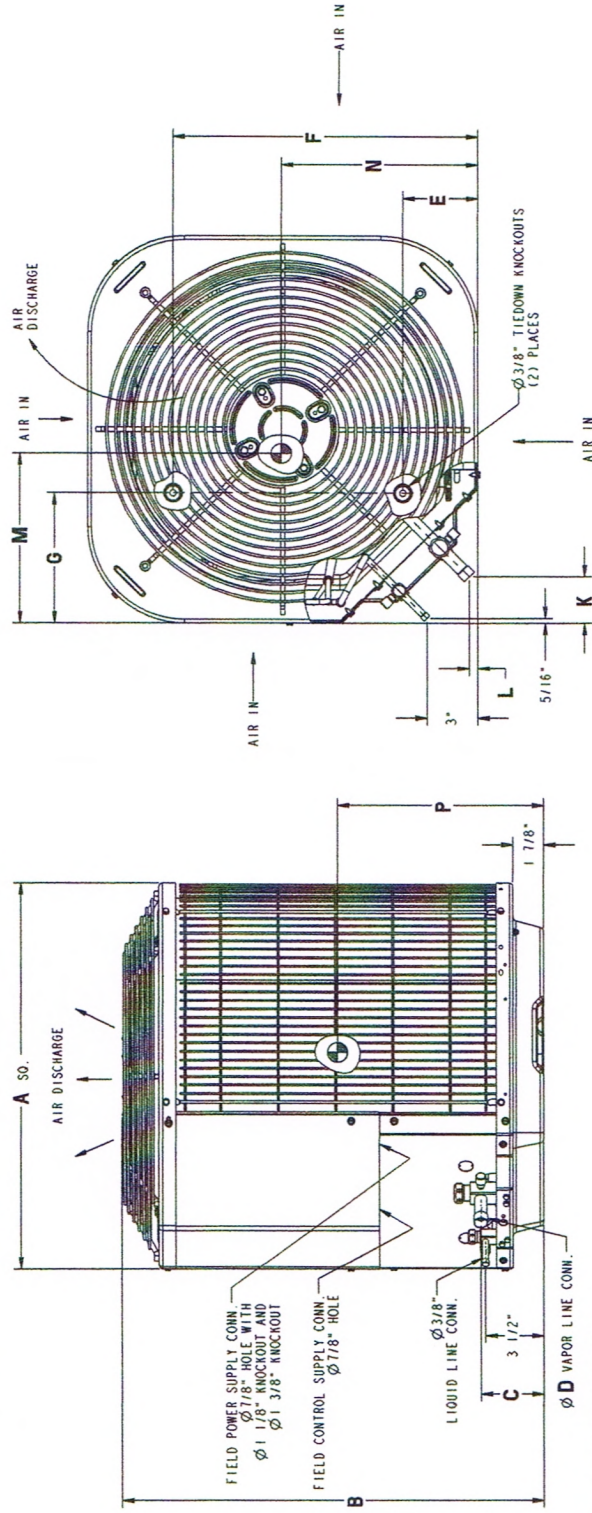
One access panel provides access to electrical controls. Removal of top gives access to fan motor, compressor, and condenser coil.

# DIMENSIONS - ENGLISH

UNIT	SERIES	ELECTRICAL CHARACTERISTICS	A	B	C	D	E	F	G	K	L	M	N	P	OPERATING WEIGHT (LBS)/WEIGHT (LBS)	SHIPPING DIMENSIONS (L x W x H)
PA13MA018	B	X 0 0	23 1/8"	24 13/16"	3 3/4"	3/4"	4 7/16"	18 1/16"	7 13/16"	2 13/16"	1/2"	12"	11 3/4"	11 7/8"	108	24 1/8" x 24 1/8" x 21 3/16"
PA13MA024	B	X 0 0	23 1/8"	24 13/16"	3 3/4"	3/4"	4 7/16"	18 1/16"	7 13/16"	2 13/16"	1/2"	12"	11 3/4"	11 7/8"	111	24 1/8" x 24 1/8" x 21 3/16"
PA13MA030	B	X 0 0	23 1/8"	28 7/16"	3 3/4"	3/4"	4 7/16"	18 1/16"	7 13/16"	2 13/16"	1/2"	12"	11 3/4"	12 1/2"	114	24 1/8" x 24 1/8" x 30 5/8"
PA13MA036	B	X 0 0	23 1/8"	35 3/16"	3 7/8"	7/8"	4 7/16"	18 1/16"	7 13/16"	2 13/16"	1/2"	12"	11 3/4"	13 3/4"	127	24 1/8" x 24 1/8" x 37 7/16"
PA13MA042	B	X 0 0	31 3/16"	31 13/16"	3 7/8"	7/8"	6 9/16"	24 11/16"	9 1/8"	2 15/16"	5/8"	16"	15 1/2"	13 3/4"	172	32 3/16" x 32 3/16" x 34"
PA13MA060	D	X 0 0	31 3/16"	35 3/16"	3 7/8"	7/8"	6 9/16"	24 11/16"	9 1/8"	2 15/16"	5/8"	16"	15 1/2"	15 1/2"	181	32 3/16" x 32 3/16" x 37 7/16"
PA13MA060	B	X 0 0	31 3/16"	28 7/16"	3 7/8"	7/8"	6 9/16"	24 11/16"	9 1/8"	2 15/16"	5/8"	16"	15 1/2"	12 3/4"	198	32 3/16" x 32 3/16" x 30 5/8"
PA13PR036	B	0 0 X	23 1/8"	35 3/16"	3 7/8"	7/8"	4 7/16"	18 1/16"	7 13/16"	2 13/16"	1/2"	12"	11 3/4"	13 3/4"	144	24 1/8" x 24 1/8" x 37 7/16"
PA13PR048	D	0 0 X	31 3/16"	35 3/16"	3 7/8"	7/8"	6 9/16"	24 11/16"	9 1/8"	2 15/16"	5/8"	16"	15 1/2"	15 1/2"	181	32 3/16" x 32 3/16" x 37 7/16"
PA13PR060	B	0 0 X	31 3/16"	28 7/16"	3 7/8"	7/8"	6 9/16"	24 11/16"	9 1/8"	2 15/16"	5/8"	16"	15 1/2"	12 3/4"	198	32 3/16" x 32 3/16" x 30 5/8"

X : YES  
O : NO

460-3-60	208/230-3-60	230-160	208-230-160
----------	--------------	---------	-------------



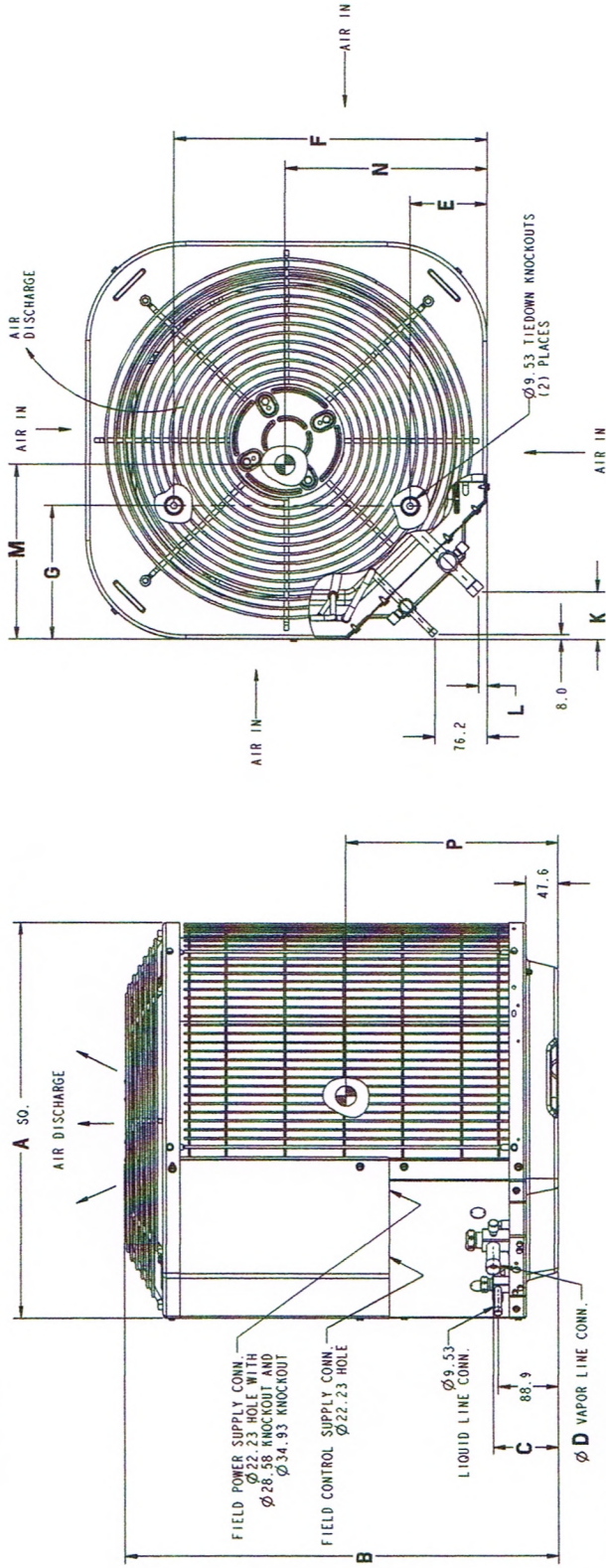
UNIT SIZE	MINIMUM MOUNTING PAD DIMENSIONS
18, 24, 30, 36	23 1/2" x 23 1/2"
...	26" x 26"
42, 48, 60	31 1/2" x 31 1/2"
...	35" x 35"

# DIMENSIONS - SI

UNIT	SERIES	ELECTRICAL CHARACTERISTICS		DIMENSIONS (L x W x H)															
		A	B	C	D	E	F	G	K	L	M	N	P	OPERATING WEIGHT (Kgs)	SHIPPING WEIGHT (Kgs)	DIMENSIONS (L x W x H)			
PA13MA018	B	X	0	0	630.2	95.2	19.0	112.7	458.8	198.4	71.4	12.7	304.8	298.4	301.6	49.0	612.8 X 612.8 X 690.6		
PA13MA024	B	X	0	0	587.4	630.2	95.2	112.7	458.8	198.4	71.4	12.7	304.8	298.4	301.6	57.6	612.8 X 612.8 X 690.6		
PA13MA030	B	X	0	0	587.4	722.3	95.2	112.7	458.8	198.4	71.4	12.7	304.8	298.4	317.5	59.0	612.8 X 612.8 X 771.9		
PA13MA036	B	X	0	0	587.4	893.8	98.4	112.7	458.8	198.4	71.4	12.7	304.8	298.4	349.2	65.3	612.8 X 612.8 X 950.9		
PA13MA042	B	X	0	0	792.2	808.0	98.4	166.7	627.1	231.8	74.6	15.9	406.4	393.7	349.2	86.4	817.6 X 817.6 X 863.6		
PA13MA048	D	X	0	0	792.2	893.8	98.4	166.7	627.1	231.8	74.6	15.9	406.4	393.7	393.7	88.4	817.6 X 817.6 X 950.9		
PA13MA060	B	X	0	0	792.2	722.3	98.4	166.7	627.1	231.8	74.6	15.9	406.4	393.7	323.8	101.6	817.6 X 817.6 X 771.9		
PA13PR036	B	0	0	X	587.4	893.8	98.4	112.7	458.8	198.4	71.4	12.7	304.8	298.4	349.2	57.6	612.8 X 612.8 X 950.9		
PA13PR048	D	0	0	X	792.2	893.8	98.4	166.7	627.1	231.8	74.6	15.9	406.4	393.7	393.7	82.3	817.6 X 817.6 X 950.9		
PA13PR060	B	0	0	X	792.2	722.3	98.4	166.7	627.1	231.8	74.6	15.9	406.4	393.7	323.8	101.6	817.6 X 817.6 X 771.9		

208-230-160	230-160	208/230-3-60	460-3-60
-------------	---------	--------------	----------

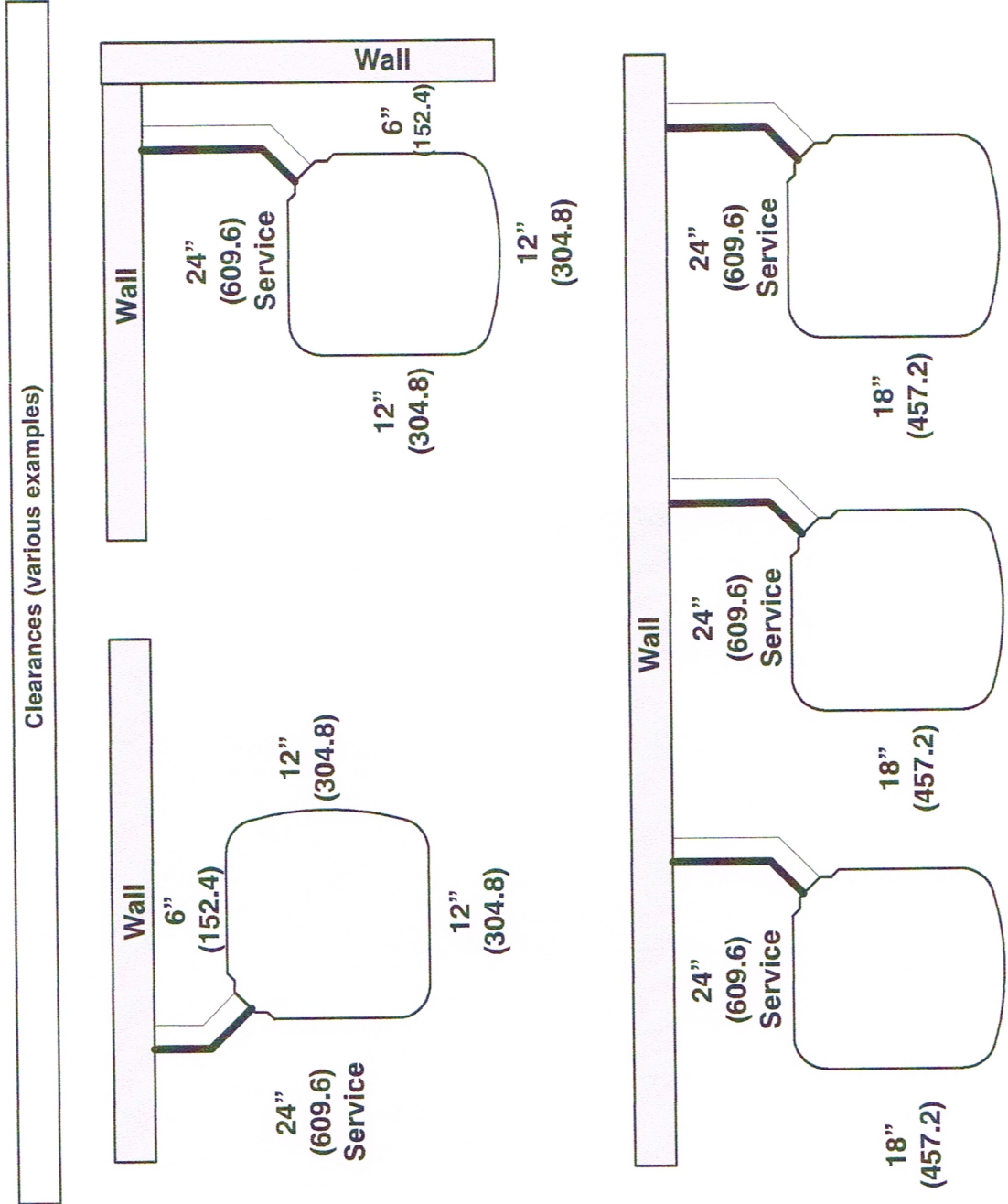
X = YES  
0 = NO



UNIT SIZE	MINIMUM MOUNTING PAD DIMENSIONS
18, 24, 30, 36	596.9 X 596.9
...	660.4 X 660.4
42, 48, 60	800.1 X 800.1
...	889.0 X 889.0

PA13NA / PA13PA

# CLEARANCES



**Note:** Numbers in ( ) = mm

**IMPORTANT:** When installing multiple units in an alcove, roof well, or partially enclosed area, ensure there is adequate ventilation to prevent re-circulation of discharge air.