

BRISTOL RHODE ISLAND ZONING REGULATIONS
ARTICLE VIII SECTION 28-251(11)A:

ALONG THE STREET FRONTAGE, A THREE-FOOT PLANTED STRIP WITH ONE SHADE TREE FOR EVERY 40 FEET OF FRONTAGE SHALL BE PROVIDED.

BRISTOL RHODE ISLAND ZONING REGULATIONS
F ARTICLE F.2(13)(B)

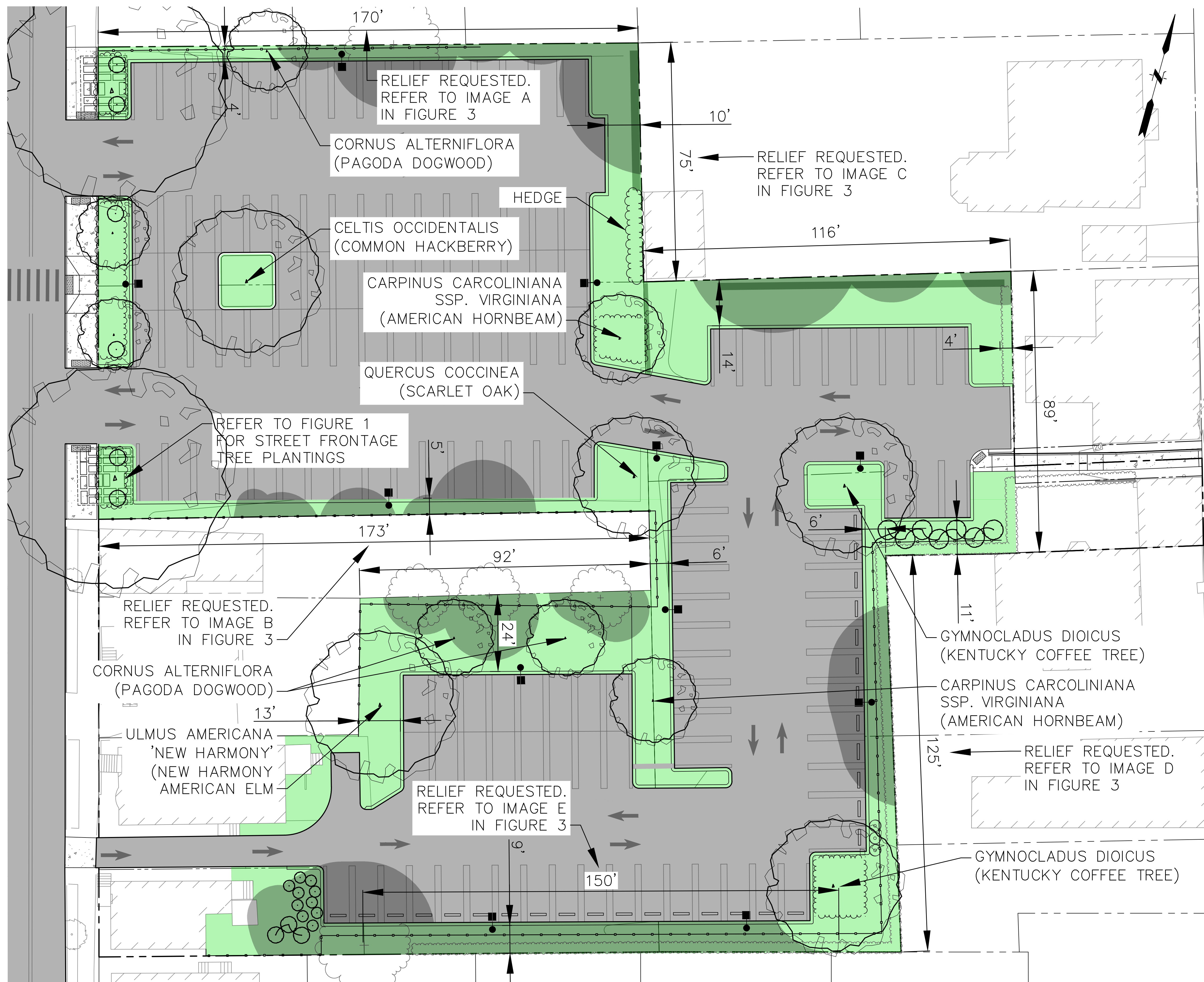
TREES SHALL BE PLANTED AT DISTANCES OF NOT LESS THAN THIRTY (30) FEET NOR MORE THAN FIFTY (50) FEET APART ALONG EACH SIDE OF THE STREET PAVEMENT. AT STREET CORNERS, TREE SHALL NOT BE PLANTED WITHIN TWENTY[1] FIVE (25) FEET OF THE INTERSECTING RIGHT-OF-WAY LINES

THE TOWN OF BRISTOL SUBDIVISION AND DEVELOPMENT REVIEW REGULATIONS RECOMMENDED TREE LIST INCLUDES COMMON SYCAMORE AND BLACK GUM.

FIGURE 1: STREET FRONTAGE PLANTINGS

ALONG INTERIOR LOT LINES, A THREE-FOOT PLANTED STRIP WITH ONE SHADE TREE FOR EVERY 50 FEET OF INTERIOR LOT LINES SHALL BE PROVIDED. A HEDGE OF COMPACT EVERGREENS OR OTHER SUITABLE PLANTINGS MAY BE SUBSTITUTED FOR THE PLANTED STRIP.

THE TOWN OF BRISTOL SUBDIVISION AND DEVELOPMENT REVIEW REGULATIONS RECOMMENDED TREE LIST INCLUDES AMERICAN HORNBEAM, COMMON HACKBERRY, KENTUCKY COFFEE TREE, PAGODA DOGWOOD, SCARLET OAK, AND NEW HARMONY AMERICAN ELM.



LEGEND:

- PROPERTY LINE
- EXISTING TREE CANOPY
- PROPOSED LANDSCAPE AREA

FIGURE 2: INTERIOR LOT LINE PLANTINGS

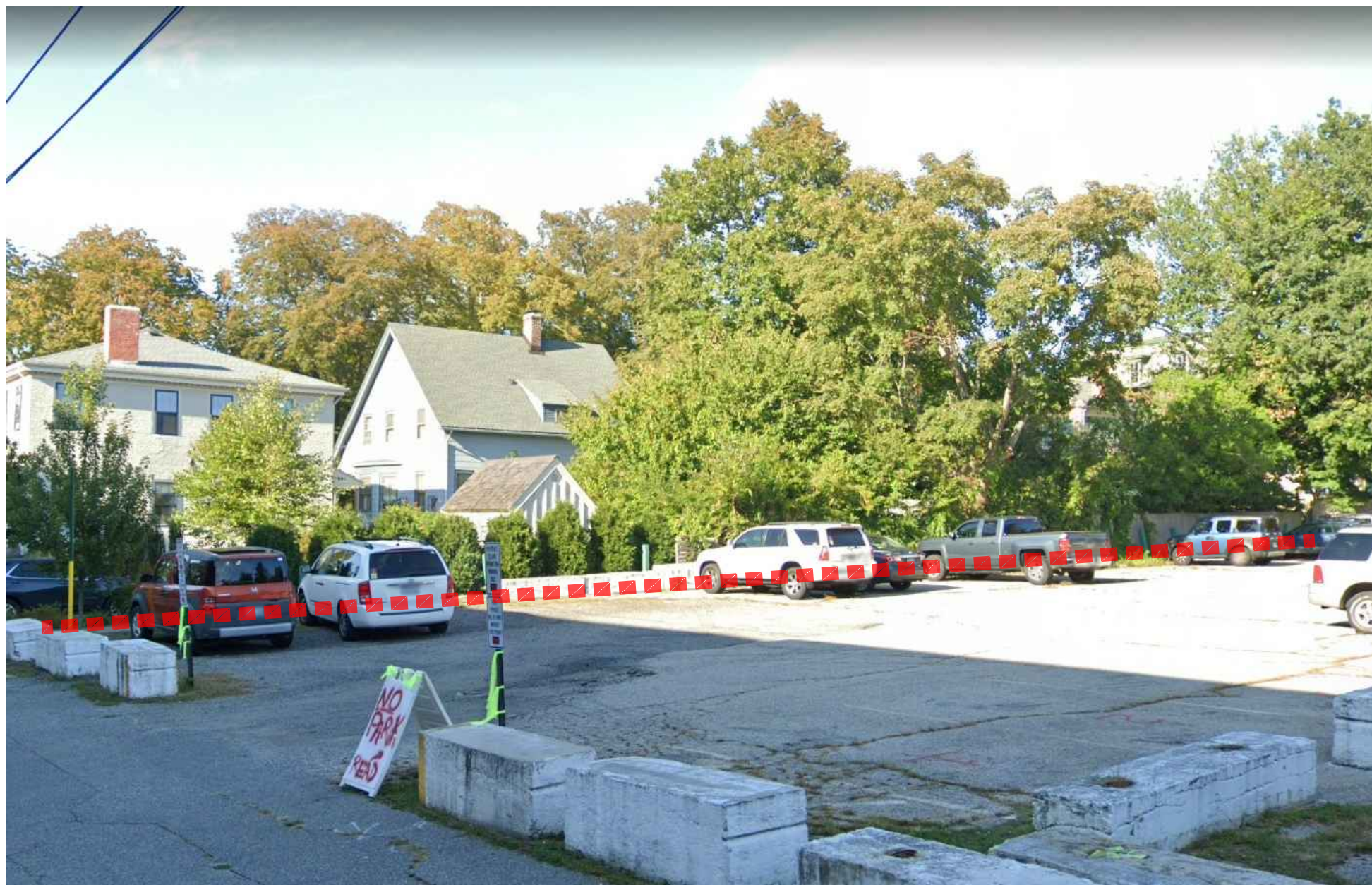
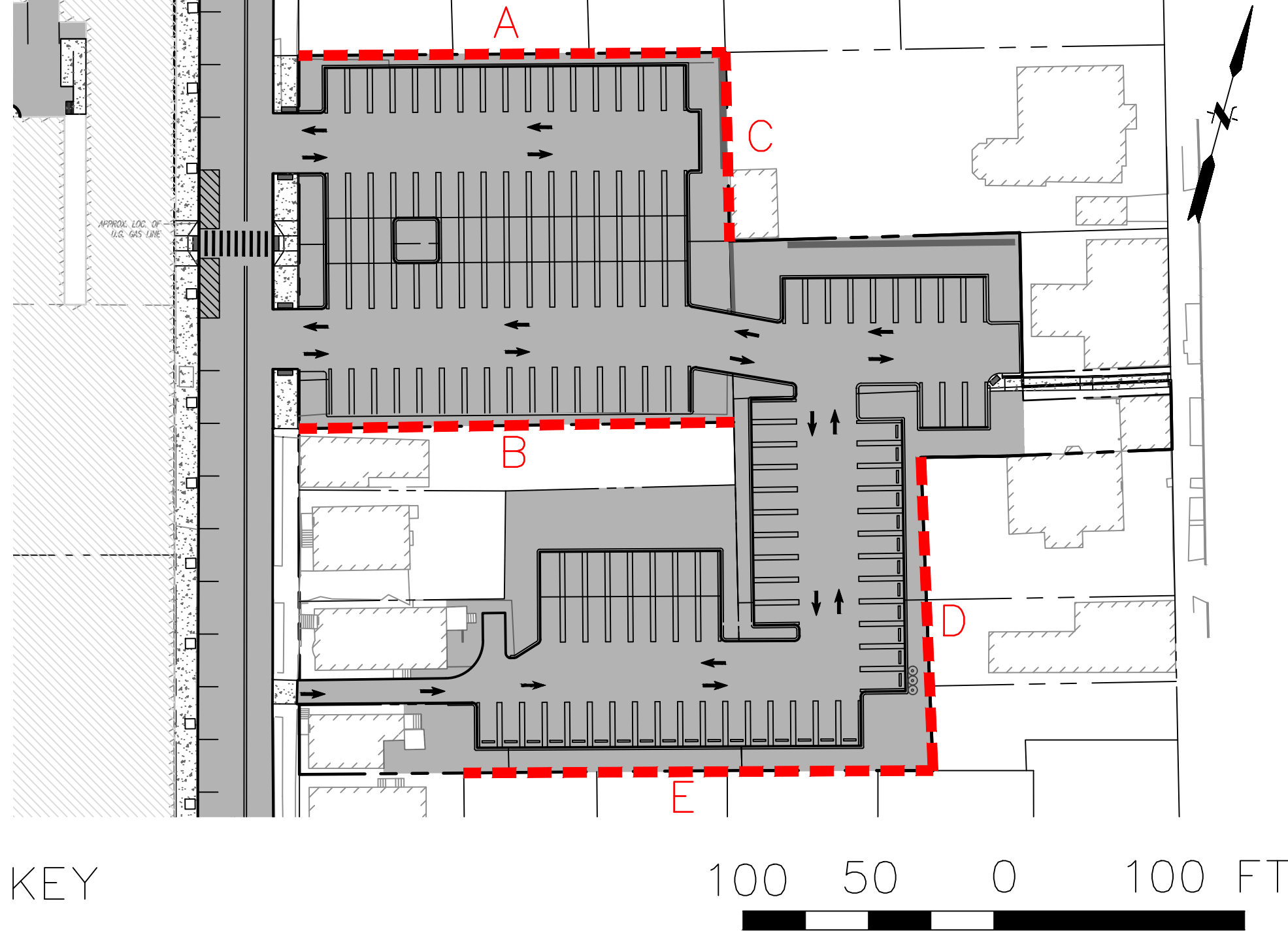


IMAGE A: PROPERTY LINE NORTH OF EXISTING PAVED AREA (ADJACENT TO LOTS 37–39)



IMAGE B: PROPERTY LINE SOUTH OF EXISTING PAVED AREA (ADJACENT TO LOT 45)



KEY



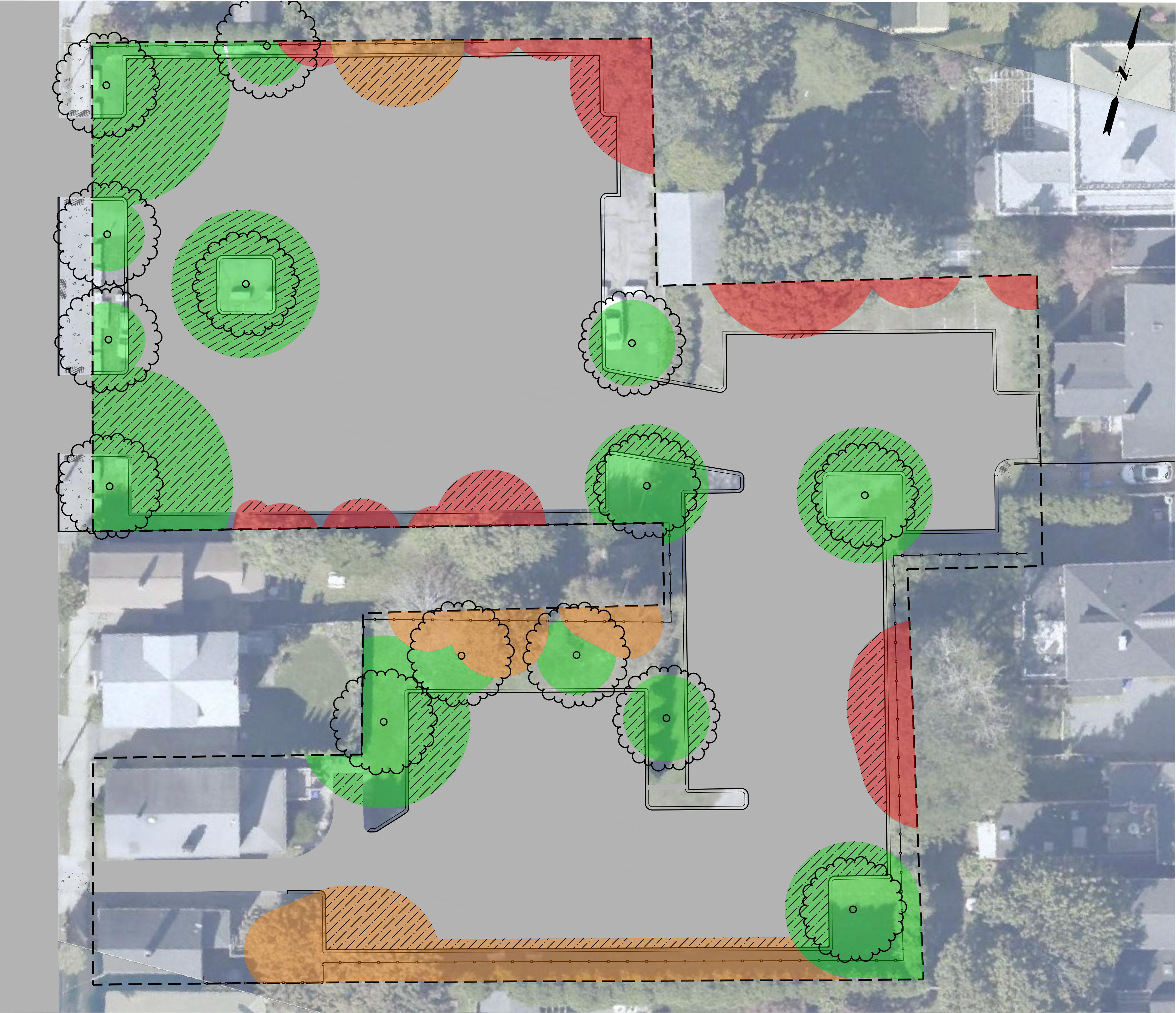
IMAGE C: PROPERTY LINE EAST OF EXISTING PAVED AREA (ADJACENT TO LOT 40)



IMAGE D: EASTERN PROPERTY LINE (ADJACENT TO LOTS 46, 75, AND 78)



IMAGE E: SOUTHERN PROPERTY LINE (ADJACENT TO LOTS 53–56)



BRISTOL RHODE ISLAND ZONING REGULATIONS ARTICLE
VIII SECTION 28-251(11)C:

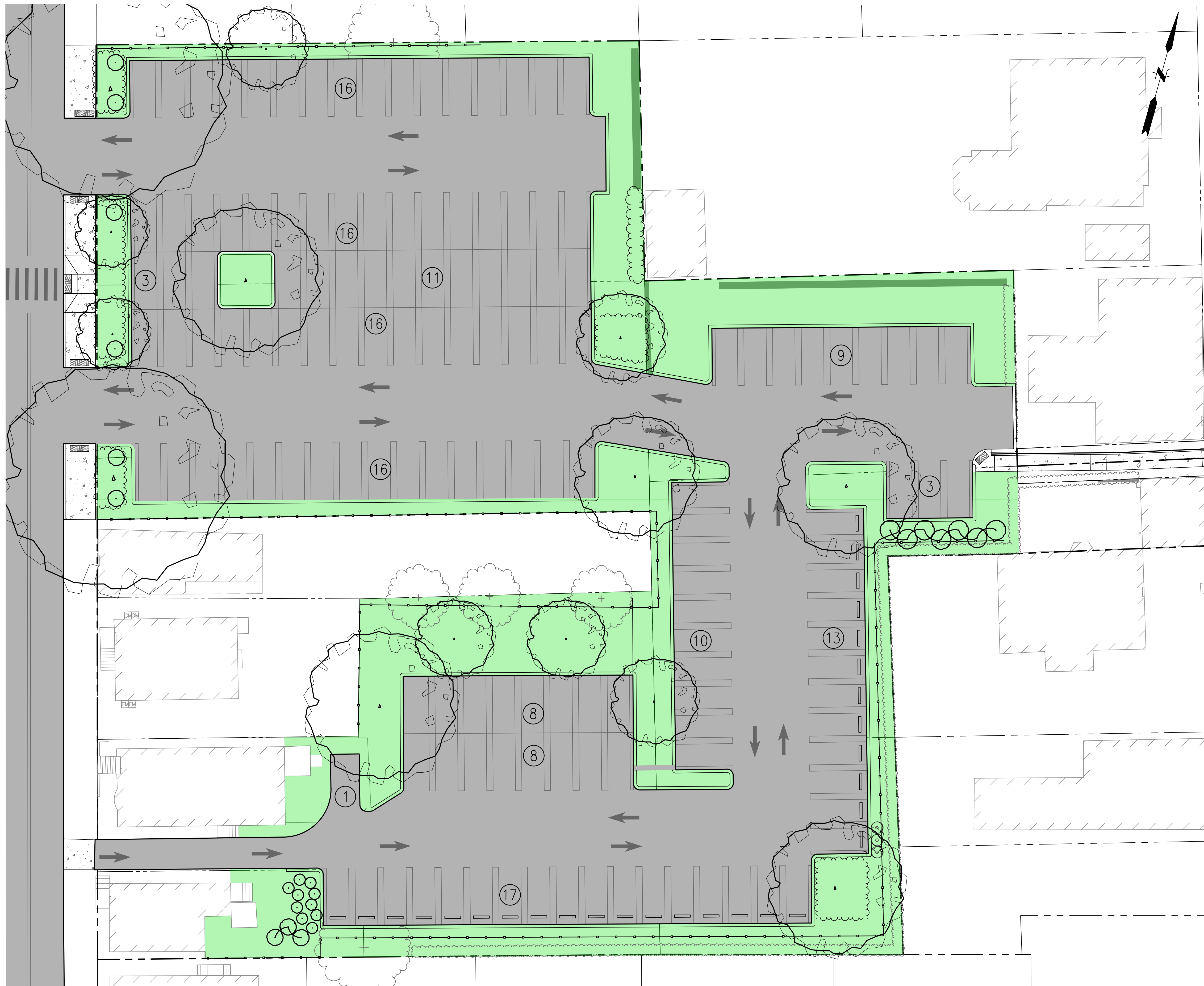
20% OF THE PARKING AREA SHALL BE SHADED BY
DECIDUOUS TREES.

TREE CANOPY SUMMARY:

	LOT COVERAGE		PARKING AREA COVERAGE	
	(SF)	(%)	(SF)	(%)
LOT	61,135	—	—	—
PAVED PARKING AREA	41,360	67.7%	—	—
EXISTING TREE CANOPY (OFF-SITE)	3,870	6.3%	1,170	2.8%
EXISTING TREE CANOPY (ON-SITE)	4,675	7.7%	1,335	3.2%
PROPOSED TREE CANOPY (ASSUMING 75% CANOPY GROWTH)	12,765	20.9%	6955	16.8%
PROPOSED TREE CANOPY (ASSUMING 15-FT CANOPY RADIUS)	8,480	13.9%	2,430	5.9%
TOTAL TREE CANOPY (75% GROWTH)	21,310	34.9%	9,460	22.8%
TOTAL ON-SITE TREE CANOPY (75% GROWTH, NO OFF-SITE)	17,440	28.6%	8,290	20%
TOTAL ON-SITE TREE CANOPY (15-FT RADIUS, NO OFF-SITE)	11,690	19.1%	3,440	8.3%

LEGEND:

- LOT BOUNDARY
- PROPOSED PAVED PARKING AREA
- PROPOSED TREE (15-FOOT RADIUS)
- PROPOSED TREE CANOPY (75% GROWTH)
- EXISTING TREE CANOPY (ON-SITE)
- EXISTING TREE CANOPY (OFF-SITE)
- TREE CANOPY OVER PARKING AREA





BRISTOL RHODE ISLAND ZONING REGULATIONS
ARTICLE VIII SECTION 28-251(11)C:

THE INTERIOR OF PARKING AREAS SHALL
HAVE A MINIMUM OF TEN SQUARE FEET OF
LANDSCAPING FOR EACH PARKING SPACE.

PARKING AND LANDSCAPING SUMMARY:

PARKING SPACES	147
REQUIRED LANDSCAPE AREA	1,470 SF
PROVIDED LANDSCAPE AREA	16,630 SF
LANDSCAPING PER PARKING SPACE	113 SF

LEGEND:

	PROPERTY LINE
	PROPOSED LANDSCAPE AREA