



FCM Fixed Skylight System Technical Product Data Sheet

Description

- FCM Fixed Curb Mount Skylight System that mounts to a site-built curb (residential curbs typically 2x4 or 2x6). Fixed skylight, provided with various insulated glass units. Manufactured with a solar powered shade, a neutral gray aluminum profile and integral gasket preventing air and water infiltration while allowing the removal of interior condensation.

Installation

- Single unit applications only (combination applications not possible).
- 0 degrees to 60 degrees, use standard installation procedure.
- Above 45 degrees, use water diverter as illustrated in installation instructions; water diverter provided by installer.

Flashings

- ECL – Engineered neutral gray flashing for single installation with thin roofing material ($\frac{1}{2}$ " max) for roof pitch above 10-60 degrees.
- ECW – Engineered neutral gray flashing for single installation with tile (over $\frac{3}{8}$ ") roofing material for roof pitch above 14-60 degrees.
- Applications less than 10-degree roof pitch - flashing provided by others.



Standard System Sizes

- 1943*, 2222, 2230, 2234, 2246, 2270, 2347*, 3030, 3171*, 3046, 3055, 3422, 3434, 3446, 4622, 4630, 4646, 4672
- Custom sizes available.

Special Stocked Sizes**

1943 2222 2230 2234 2246 2270 2347 3030 3171 3046 3055 3422 3434 3446 4622 4630 4646 4672



VELUX TGR/TMR Technical Product Data Sheet



Description

- TGR/TMR Sun Tunnel with low-profile (TGR) or pitched (TMR) metal flashing that mounts to the roof deck. Rigid aluminum tubing with highly reflective inner surface. Available in 10" or 14" diameter with acrylic or polycarbonate impact dome. TGR also available in 22".

Installation

- Designated top, bottom, or sides for installation in one direction.
- 14 degrees to 60 degrees, use standard installation procedure.

Flashings

- **ZTM** - Engineered flashing for deck mount with tile (over 3/4") roofing material for roof pitch from 14-60 degrees. For TMR only.

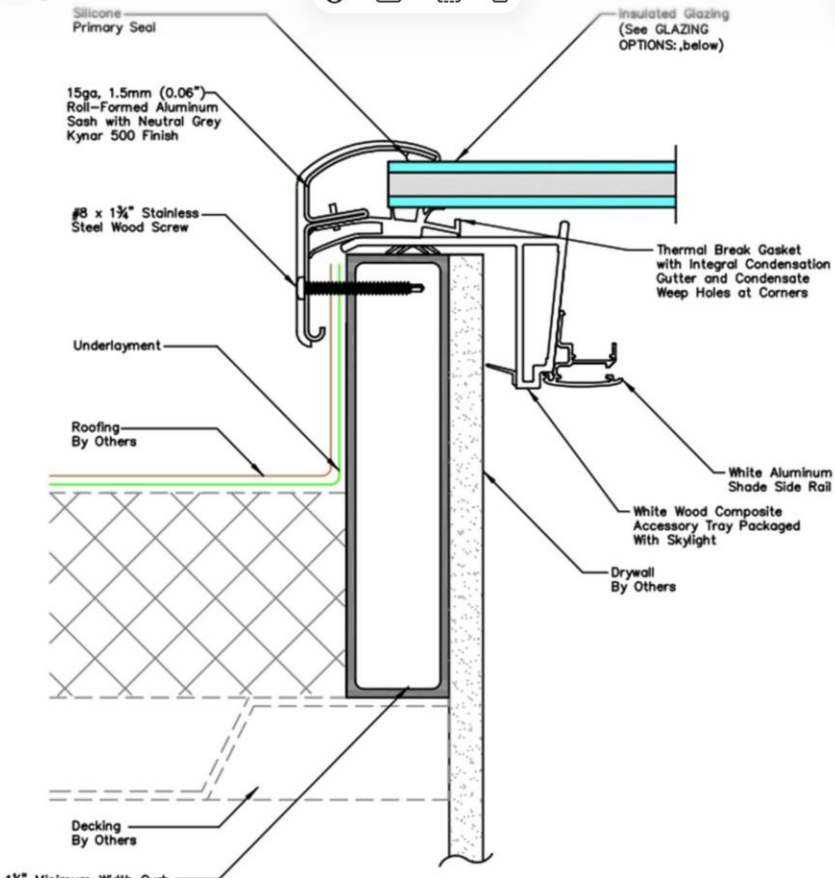
Interior Accessories

- Decorative Diffusers **ZTB** are available in Micro Fresnel, Triple Wave, Brushed Metal, Prismatic, Bubbles, and Natural Light.
- Solar Night Light **ZTZ 213**
- Daylight Controller **ZTP** - Motorized variable positioning daylight controller.
- Universal Electric Light Kit **ZTL**



Warranty

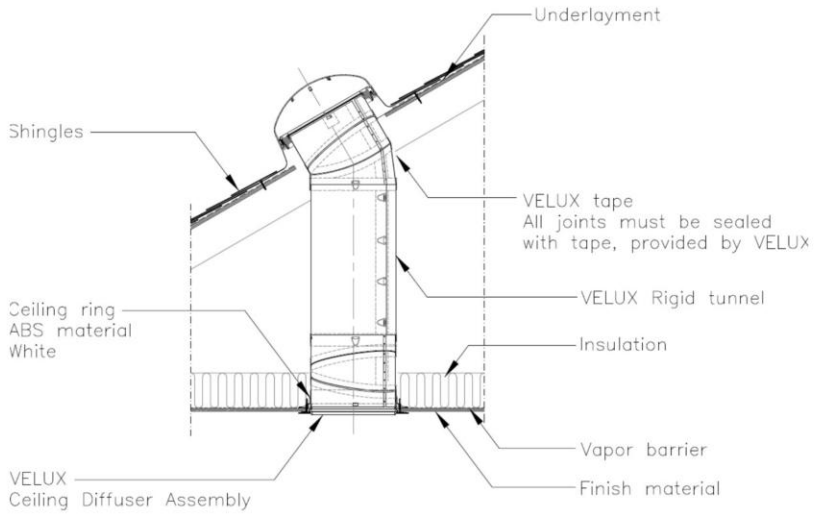
- **Sun Tunnel Skylight** - 10 years from the date of purchase; VELUX warrants that the skylight will be free from defects in material and workmanship.
- **Acrylic Dome** - The yellowness index ("YI") on clear acrylic Sun Tunnel® Skylight domes shall be less than



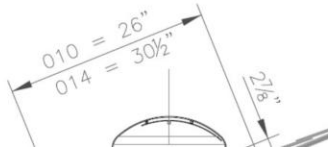




Cross Section



TGR



Edit

3 Tabs

Private

Saved

Bookmarks

Reading List

History

Shared with You

app.roof.com

Watch Five Nights at Freddy's... Record HDC-26-35 - Town of... Sign Proposal

Review & sign 0/3

Sign now

The ultimate skylight experience.

Meet the Complete VELUX Skylight System

Designed for better everyday living.

Beginning this year, most VELUX glass skylights will include remote-controlled solar-powered shades!

The VELUX Skylight System includes Skylight, Shade, and Remote Control.

- Glass Skylight** - The ultimate skylight experience with remote control solar-powered shades.
- Color-Powered Shade** - The ultimate skylight experience with remote control solar-powered shades.
- Remote Control** - The ultimate skylight experience with remote control solar-powered shades.
- Standard Safety Glass** - The ultimate skylight experience with remote control solar-powered shades.
- Easy Installation** - The ultimate skylight experience with remote control solar-powered shades.
- Energy Efficient** - The ultimate skylight experience with remote control solar-powered shades.
- Weather-Resistant** - The ultimate skylight experience with remote control solar-powered shades.

VELUX Skylight Systems available in roofing and head models.

Why Skylight Shades?
Your skylight needs shades. Without shades, your skylight is just a window. With shades, your skylight is a skylight. They provide privacy, control light, and protect your skylight from damage.

Skylight Shade Benefits
Protects your skylight from damage. Controls light and temperature. Provides privacy. Easy to install and use.

More Skylight System Benefits
Easy to install. Energy efficient. Weather-resistant. Remote control operation.

FCM

Fixed Curb-Mounted Skylight System



VELUX Fixed Curb-Mounted Skylight Systems are an energy-efficient option that make any dark room come to life with daylight and sky views.

Product Details

- Factory-installed white double-paneled room-darkening solar-powered shade.
- Solar-powered battery control system easily opens and closes shades with remote or smartphone app.

The Skylight System Includes

- Solar-Powered Shade







1 Tab

Private

Saved

Bookmarks

Reading List

History

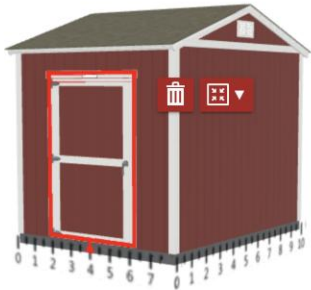
Shared with You

tuffshed.com

TUFF SHED ! There were some errors when trying to submit your quote. Please check the errors and try again. OK!

\$5,015.00 USD **Details**

Premier Tall Ranch - 10' wide by 8' long



Door Type: **Shed**

Door Style: **Single Door**

Door - Included by d... Hinge...
4' x 6'7" Single Shed Door **Le**

Transom Windows in the Do...
None

Door Trim

Black Keyhole Door Hardware

Door Drip Seal

Door Security Cap

Door Handle

Ramps

Building Type, Style, & Size

Doors, Windows & Vents

Walls

Paint

Roof

Floor & Foundation

Interior & Lighting

! Finalize Configuration & Job Details

SAVE YOUR QUOTE **PROCEED TO CHECKOUT**





AutoFill can assist with filling out this form.

AutoFill Form X



Derek Rogers
248 Hope St.
Bristol RI 02322
Q12154898-12114748



Wall D

Wall A

Wall C



Wall B

Base Details/Permit Details

Building Size & Style
10'x10' - 10' wide by 12' long
Door
4' x 6 7/8" Single Shed Door, Left Hinge
Placement
Paint Selection
None, No Paint, Trim: No Paint
Roof Selection
Weathered Wood Natural Shadow
Single
Drip Edge
White
Is a permit required for this job?
No, if local jurisdiction requires a permit,
 fees will be added before installation
 can take place

Optional Details

Windows
3x2' Insulated Horizontal Sliding
Window
Floor and Foundation
120 lbs. 5/8" Treaded Floor Decking
Upgrade
Vents
2 x 16" 18" Wall Vent - White
Custom Services
2 Dets Anchors

Jobsite/Installer Details

**Do you plan to insulate this building after
Tuff Shed installs it?**
No
**Is there a power outlet within 100 feet of
installation location?**
Yes
**The building location must be level to
properly install the building. How level
is the install location?**
Within 4" of level
**Will there be 18" of unobstructed
workspace around the perimeter of all
four walls?**
Yes
**Can the installers park their pickup truck &
trailer within approximately 200' of
your installation site?**
Yes
Substrate Shed will be installed on?
Grass

Customer Signature: _____ Date: _____