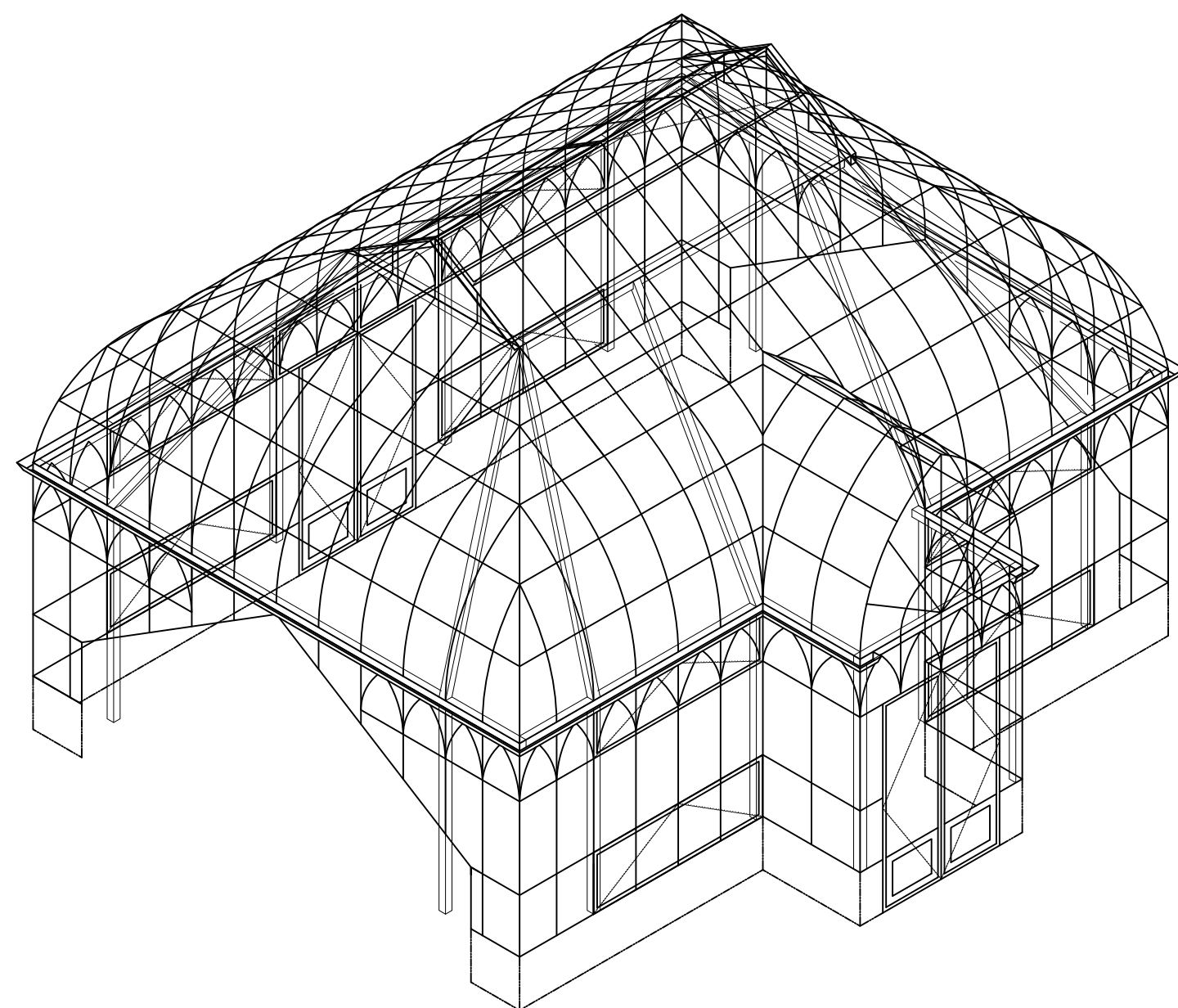


ISOMETRIC (FOR PERSPECTIVE ONLY - NOT TO SCALE)



IMPORTANT BENT GLASS NOTE:
BENT GLASS AND GLAZING BARS OBSERVE A $\pm 1/32"$ TOLERANCE FOR BOTH. BENT GLASS MUST BE INSTALLED WITH ONLY 4-5 LBS OF PRESSURE PER LINEAR INCH OF PERIMETER. IF EXCESS GAP IS LEFT, FILL WITH SILICONE.

WARNING!
RIDGE VENTS/EAVE VENTS HAVE MULTIPLE PINCH POINTS THAT CAN CAUSE INJURIES DURING OPERATION. DO NOT PLACE YOUR HANDS OR OTHER BODY PARTS BETWEEN OPERABLE PANEL AND FRAME. SOLAR INNOVATIONS, LLC IS NOT RESPONSIBLE FOR ANY INJURIES SUSTAINED DURING OPERATION OF PRODUCT OR OTHERWISE.

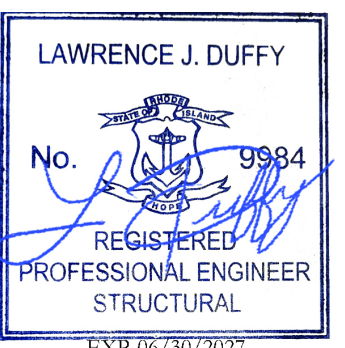
NOTE: ISOMETRIC IS FOR BASIC VISUAL REPRESENTATION ONLY. ACTUAL SIZE AND LAYOUT OF FINISHED PRODUCT IS DETAILED IN THE FOLLOWING PAGES.

ENGINEERING NOTES

JOB LOCATION: BRISTOL, RI, USA 02809	P.E. STAMP PROVIDED BY SOLAR INNOVATIONS, LLC: YES	SUBSTRATE MATERIAL REQUIREMENTS/ASSUMPTIONS CONCRETE: ALL CONCRETE WORK IS TO BE DESIGNED IN ACCORDANCE WITH ACI 318-14 AND AS PER CUSTOMER'S PROJECT SPECIFIC SPECIFICATIONS AND PLANS. ALL CONCRETE DESIGN AND ENGINEERING IS RESPONSIBILITY OF CUSTOMER'S ENGINEER. BELOW REQUIREMENTS ARE MINIMUM FOR THE STRUCTURE TO WORK. IN CASE OF CONFLICTING INFORMATION BETWEEN CUSTOMER'S ENGINEER DRAWINGS AND THESE DRAWINGS THE MOST RESTRICTIVE WILL GOVERN. <ul style="list-style-type: none">F C = 2,900PSI (NORMAL WEIGHT CONCRETE)REINFORCEMENT = CONDITION B FOR SHEAR AND CONDITION B FOR TENSION ALL CONCRETE REINFORCEMENT IS TO BE DESIGNED AND ENGINEERED BY ENGINEER OF RECORDS.
ENGINEERING DESIGN CRITERIA		
DESIGN DATA DESIGN CODE: RIBC-1 2021 - 2021 IBC (ASCE 7-16) DEAD LOADS SELF WEIGHT: GLASS AND GLAZING DENSITY = 156pcf ALUMINUM DENSITY = 172.8pcf MISC: ADDITIONAL SELF WEIGHT FOR MISC. ITEMS = 5%	SEISMIC LOADS INFORMATION: SEISMIC IMPORTANCE FACTOR = 1.0 SEISMIC SITE CLASS = D SEISMIC DESIGN CATEGORY = B S1 = 0.054g; Sa = 0.197g Sds = 0.21 MAIN SEISMIC FORCES RESISTING SYSTEM = ALUM. FRAME RESPONSE MODIFICATION FACTOR = 1.0 SYSTEM OVER STRENGTH FACTOR = 2.5 SEISMIC RESPONSE COEFFICIENT Cs = 0.21	STEEL: <ul style="list-style-type: none">ALL STEEL SHALL CONFORM TO ASTM A500, GRADE B (FY = 46KSI MIN). SOLAR INNOVATIONS RECOMMENDS THE STEEL TO BE PAINTED AND/OR GALVANIZED OR OTHERWISE TREATED TO MINIMIZE THE POSSIBILITY OF CORROSION. FINISH AND TREATMENT MUST BE DETERMINED BY CUSTOMER'S ENGINEER. ALL ASSOCIATED COST REGARDING CORROSION INHIBITION IS RESPONSIBILITY OF THE CUSTOMER OR GENERAL CONTRACTOR AS APPLICABLE.
SNOW LOADS: GROUND SNOW LOAD (Pg) = 30psf (Min) SNOW EXPOSURE FACTOR (Ce) = 1.0 SNOW LOAD IMPORTANCE FACTOR (Is) = 1.0 THERMAL FACTOR (Ct) = 1.2 SLOPE FACTOR (Cs) = 1.0 STAND REDUCTION = 0.7 DESIGN UNBALANCED SNOW LOAD (Ps) = 30psf DRIFTING LOAD = 15.1psf Triangular Load over 3:4 Projection	LIVE LOAD AND ROOF LIVE LOAD ROOF LIVE LOAD = 20psf	FASTENERS: ALL FASTENERS HAVE BEEN DESIGNED IN ACCORDANCE WITH 2020 ALUMINUM DESIGN MANUAL AND AAMA TR A9-14. ALL FASTENERS (BOLTS AND SCREWS) ARE 18-8 STAINLESS STEEL UNLESS OTHERWISE NOTED. CONCRETE ANCHORS: ALL 3/8" DIA ANCHORS ARE WE-JIT POWER-SKRU LARGE DIAMETER CONCRETE SCREWS (CARBON STEEL) MECHANICALLY GALVANIZED PLATING AND HAVE BEEN DESIGNED IN ACCORDANCE TO PUBLISHED DESIGN VALUES. MINIMUM EDGE DISTANCE AND SPACINGS ARE AS SHOWN ON THE DRAWINGS BUT NEVER LESS THAN 1/2" AND 1/2" RESPECTIVELY. WE-JIT POWER-SKRU MUST BE INSTALLED IN ACCORDANCE WITH MANUFACTURER PUBLISHED INSTRUCTIONS.
WIND LOAD INFORMATION BASIC WIND SPEED V=120mph Vult. WIND EXPOSURE = C VELOCITY PRESSURE EXPOSURE COEFFICIENT: 0.90 DESIGN PRESSURE: WALL: 27.59psf ROOF (UPLIFT): 30.32 psf	FOUNDATION AND EXISTING STRUCTURE ALONG WITH ALL CONNECTIONS TO SUCH ARE TO BE DESIGNED AND ENGINEERED BY OTHERS	
CUSTOMER RESPONSIBILITY: SOLAR INNOVATIONS STRONGLY RECOMMENDS THE HIRING OF AN ENGINEER OR AN ARCHITECT FOR THE PROPER REVIEW OF THE DRAWINGS. CUSTOMER ACKNOWLEDGES THE STRUCTURE HEREIN SHOWN WILL BE ATTACHED TO AN EXISTING STRUCTURE OR FOUNDATION AND THAT SUCH STRUCTURE OR FOUNDATION IS TO BE EVALUATED BY A PROFESSIONAL ENGINEER AND/OR ARCHITECT. ANY COSTS ASSOCIATED WITH THE SERVICES PROVIDED BY THE ENGINEER OR ARCHITECT IS RESPONSIBILITY OF THE OWNER. THE FOLLOWING DEFINITIONS APPLY: "TERMS SUCH AS OWNER, OWNER OF THE STRUCTURE, REPRESENTATIVE OF THE OWNER, GENERAL CONTRACTOR, SUB CONTRACTOR, SOLAR INNOVATIONS' CUSTOMER, OR ANY PERSON ASSIGNED TO REPRESENT THE OWNER AND/OR MAKE DECISIONS ON BEHALF OR WITH THE OWNER ARE TO BE ASSUMED SYNONYMS AND REFER TO THE PERSON OR ENTITY RESPONSIBLE FOR THE ASSOCIATED TASK. "BY OTHERS" IT REFERS TO ANY ACTIVITY AND/OR PRODUCT THAT IS NOT RESPONSIBILITY OF SOLAR INNOVATIONS. IT IS OFTEN USED TO REFER TO THE CONTRACTOR, THE SUBCONTRACTOR, OR BY ANY OTHER RESPONSIBLE PERSON OR ENTITY THAT WILL BE RESPONSIBLE FOR SUCH ACTIVITY. IT IS A CATEGORICAL EXCLUSION OF A TASK, ACTIVITY, A PRODUCT, AND/OR A TASK OR ACTIVITY RELATED TO THE PRODUCT. EOR - ENGINEER OF RECORDS/ARCHITECT OF RECORDS THIS SET OF DRAWINGS MUST BE CONSIDERED AND USED FOR PRELIMINARY PURPOSES ONLY UNLESS IT HAS BEEN REVIEWED AND STAMPED BY AN ARCHITECT AND/OR A PROFESSIONAL ENGINEER (SOLAR INNOVATIONS' PROFESSIONAL ENGINEER AND/OR THE CUSTOMER'S ENGINEER). CUSTOMER ACKNOWLEDGES SOLAR INNOVATIONS HAS PROVIDED A QUOTE FOR ENGINEERING SERVICES (INDEPENDENT ENGINEERING FIRM) AND IF NOT SELECTED/ACCEPTED SOLAR INNOVATIONS WILL ASSUME THE CUSTOMER HAS HIRED AN INDEPENDENT DESIGN PROFESSIONAL (ARCHITECT OR ENGINEER AS REQUIRED BY REGULATIONS) FOR THE REVIEW, APPROVAL, AND PROPER CERTIFICATION OF THE DRAWINGS. SOLAR INNOVATIONS MAY REQUIRE THE CONTACT INFORMATION OF THE ARCHITECT(S) OR ENGINEER(S) FOR ENGINEERING TASKS PURPOSES INCLUDING BUT NOT LIMITED TO THE CONFIRMATION OF THE STRUCTURE, SUBSTRUCTURE, AND/OR SUBSTRATE HAVE BEEN PROPERLY EVALUATED FOR THE FORCES IT WILL BE SUBJECTED TO. SCOPE LIMITATION - SOLAR INNOVATIONS DRAWINGS, WHEN REVIEWED AND STAMPED BY SOLAR INNOVATION'S ENGINEER, ARE CERTIFIED FOR THE STRUCTURAL CAPACITY OF THE SYSTEM. CODE COMPLIANCE OTHER THAN THE STRUCTURAL CAPACITY (INCLUDING BUT NOT LIMITED TO ALL ARCHITECTURAL ELEVATIONS, SECTIONS, INTENDED USE, ADA REQUIREMENTS, OSHA REQUIREMENTS, AND OTHERS) ARE TO BE REVIEWED AND APPROVED BY THE ENGINEER OR ARCHITECT OF RECORDS. CONSTRUCTION MEANS AND METHODS STRUCTURE HAVE BEEN DESIGNED AND MOCKED UP IN SOLAR INNOVATIONS FACILITIES TO ENSURE THE STRUCTURE CAN BE BUILT. HOWEVER, IT IS THE CONTRACTOR'S SOLE RESPONSIBILITY TO DEVELOP A CONSTRUCTION PLAN TO ADDRESS ALL CONSTRUCTION SEQUENCE, ERECTION PROCEDURES, AND LOGISTICS REGARDING THE INSTALLATION OF THE STRUCTURE AND TO ENSURE THE SAFETY OF THE STRUCTURE AND WORKMEN DURING CONSTRUCTIONS. THE CONTRACTOR IS TO ASSUME THE STRUCTURE MAY NOT BE STABLE UNTIL COMPLETION. AN ENGINEER IS TO BE HIRED TO PROVIDE PLANS AND DRAWINGS REGARDING THE STABILITY OF THE STRUCTURE (INCLUDING SHORING, UNDERPINNING, TEMPORARY BRACING, ETC), COSTS ASSOCIATED WITH THIS RECOMMENDATION ARE RESPONSIBILITY OF THE CONTRACTOR.		

BLITHEWOLD PALM HOUSE RI - UNIT A

ACCOUNT NAME & CONTACT INFORMATION HERITAGE GREENHOUSE BUILDERS INC. 89 GREEN HILL ROAD MADISON, CT, USA 06443 PHONE: 203-453-5499 EMAIL: HERITAGEGREENHOUSES@COMCAST.NET CONTACT: STEPHEN WACHA		SHIPPING ADDRESS SHIP TO 101 FERRY ROAD BRISTOL, RI, USA 02809	JOB SITE ADDRESS JOB SITE 101 FERRY ROAD BRISTOL, RI, USA 02809
TENTATIVE SHIPPING METHOD: COMMON CARRIER			
UNIT TYPE / FRAMING SYSTEM UNIT A - ONE (1) CURVED-EAVE DOUBLE PITCH GREENHOUSE WITH PARTIAL HIP, TWO (2) PARTIAL GABLE ENDS, & CURVED-EAVE DOUBLE PITCH DORMER WITH ONE (1) GABLE END		ACCESSORY SCHEDULE (OUTSOURCE)	
TYPE	DESCRIPTION	TYPE	DESCRIPTION
(U-A)	TEN (10) S9999 ALUMINUM ELBOW ASSEMBLIES FOR 2" ROUND DOWNPOUT	(U-A)	0.04" ALUMINUM INTERIOR SILL FLASHING (AAMA 2603 SI STANDARD WHITE)
(U-A)	SOL GRIDS BETWEEN SURFACES 2 & 3 OF VERTICAL BAYS IN CONJUNCTION WITH EXTERIOR GRIDS (SILVER)	(U-A)	S9999 RESTORATION ALUMINUM EXTRUDED GUTTER (AAMA 2603 SI STANDARD WHITE)
(U-A)	TWO (2) WATER RESISTANT LINEAR ACTUATOR MOTORS (ARM CUT DOWN TO 4") FOR RIDGE VENTS LISTED BELOW (A0000659-00-00) MOTOR IS BLACK WITH SILVER ARM	(U-A)	FIVE (5) S9999 2" ROUND ALUMINUM DOWNPOUTS (AAMA 2603 SI STANDARD WHITE)
(U-A)	TWO (2) THERMOSTAT (A000064-00-00) TO CONTROL RIDGE VENTS LISTED BELOW	(U-A)	S9999 DECORATIVE RAKE MOLDING ALONG GABLE END RAFTER OF STRUCTURE (AAMA 2603 SI STANDARD WHITE)
(U-A)	TWO (2) 1-5/16" O.D. X 1" SCHEDULE 80 SHAFT (ST000517-21-00)	(U-A)	RIDGE CREST MOUNT (AAMA 2603 SI STANDARD WHITE) TO PROVIDE MOUNTING SURFACE FOR RIDGE CRESTING BY OTHER
GLAZING SCHEDULE (SLOPED & VERTICAL) (QTY: 52)		(U-A)	TRADITIONAL GRIDS APPLIED ON SURFACES 1 & 4 OF VERTICAL BAYS (AAMA 2603 SI STANDARD WHITE)
TYPE	DESCRIPTION	(U-A)	TWO (2) EIGHT-BAY INSULATED OPERABLE G1 RIDGE VENT WITH CHARCOAL COLORED FIBERGLASS SCREENS.
(1)	3/4" CLEAR MONOLITHIC HEAT STRENGTHENED LAMINATED WITH 180° ARTIC SNOW WHITE (65%) PVB INTERLAYERS	(EVA)	EIGHT (8) FOUR-BAY INSULATED OPERABLE EAVE VENT WITH CHARCOAL COLORED FIBERGLASS SCREENS.
GLAZING SCHEDULE (CURVE) (QTY: 216)		(U-A)	FOUR (4) BASE MOUNTS TO ATTACH FINALS SUPPLIED BY OTHER.
TYPE	DESCRIPTION	(U-A)	SOLAR INNOVATIONS TO RE-CREATE & PURCHASE OUT OF INVENTORY DIES USED FOR THE PROJECT (8047 / 38170 / 34489 / 37752 / 30895) EXTRA STOCK LENGTHS WILL BE SENT TO CUSTOMER IN MILL
(2)	3/4" CLEAR MONOLITHIC HEAT STRENGTHENED LAMINATED WITH 180° ARTIC SNOW WHITE (65%) PVB INTERLAYERS	(U-A)	TWENTY FOUR (24) ALUMINUM SHIMS BY S.I. (SET OF 2" / 1/2" & .060")
GLAZING SCHEDULE (VERTICAL) (QTY: 106)		(U-A)	TWO (2) GEN2 IN-SWING FRENCH DOOR, ACTIVE-LEFT, OUTFITTED WITH HOPPE "TORONTO" SWING DOOR LEVER & ADA SILL.
TYPE	DESCRIPTION	(U-A)	GLAZING SET UP: 1" INSULATED GLAZING ADA IN-SWING SILL COLOR: CLASS 1 CLEAR ANODIZED SILL FLASHING COLOR: CLASS 1 CLEAR ANODIZED FRAMING COLOR TO BE: AAMA 2603 SI STANDARD WHITE (UCH# 42737) METAL TO METAL SILICONE COLOR TO BE: WHITE METAL TO GLASS SILICONE COLOR TO BE: BLACK GLASS TO GLASS SILICONE COLOR TO BE: BLACK
(3)	1" INSULATED GLAZING UNITS 3/4" CLEAR TEMPERED 3/4" STAINLESS STEEL AIR SPACE (ARGON FILLED) 3/4" CLEAR TEMPERED SILICONE SEAL	(U-A)	GLAZING SET UP: 1" INSULATED GLAZING ADA IN-SWING SILL COLOR: CLASS 1 CLEAR ANODIZED SILL FLASHING COLOR: CLASS 1 CLEAR ANODIZED FRAMING COLOR TO BE: AAMA 2603 SI STANDARD WHITE (UCH# 42737) METAL TO METAL SILICONE COLOR TO BE: WHITE METAL TO GLASS SILICONE COLOR TO BE: BLACK GLASS TO GLASS SILICONE COLOR TO BE: BLACK
GLAZING SCHEDULE (RIDGE VENT) (QTY: 16)		(U-A)	GLAZING SCHEDULE (GRID) (QTY: 34)
TYPE	DESCRIPTION	(U-A)	1" INSULATED GLAZING UNITS 3/4" CLEAR TEMPERED (TRADITIONAL GRIDS) 3/4" STAINLESS STEEL AIR SPACE (ARGON FILLED) (SILVER SGL GRIDS) 3/4" CLEAR TEMPERED (TRADITIONAL GRIDS) SILICONE SEAL
(4)	1" INSULATED GLAZING UNITS 3/4" CLEAR TEMPERED 3/4" STAINLESS STEEL AIR SPACE (ARGON FILLED) 3/4" CLEAR TEMPERED SILICONE SEAL	(U-A)	GLAZING SCHEDULE (DOOR - PANEL) (QTY: 4)
GLAZING SCHEDULE (EAVE VENT) (QTY: 16)		(U-A)	1" INSULATED PANEL .04" ALUMINUM FLASHING (TRADITIONAL GRIDS) 3/4" FOAM .04" ALUMINUM FLASHING
TYPE	DESCRIPTION	(U-A)	FOUR (4) EXTRA PIECES OF MOST COMMON CURVE GLASS
(5)	1" INSULATED GLAZING UNITS 3/4" CLEAR TEMPERED 3/4" STAINLESS STEEL AIR SPACE (ARGON FILLED) 3/4" CLEAR TEMPERED SILICONE SEAL	(U-A)	GLAZING SCHEDULE (SLOPED & VERTICAL) (QTY: 52)
GLAZING SCHEDULE (GRID) (QTY: 34)		(U-A)	DESCRIPTION
TYPE	DESCRIPTION	(U-A)	3/4" CLEAR MONOLITHIC ANNEALED LAMINATED WITH 180° ARTIC SNOW WHITE (65%) PVB INTERLAYERS
(6)	1" INSULATED GLAZING UNITS 3/4" CLEAR TEMPERED (TRADITIONAL GRIDS) 3/4" STAINLESS STEEL AIR SPACE (ARGON FILLED) (SILVER SGL GRIDS) 3/4" CLEAR TEMPERED (TRADITIONAL GRIDS) SILICONE SEAL	S.I. DRAWING REVIEW SIGN OFF	
GLAZING SCHEDULE (DOOR - PANEL) (QTY: 4)		S.I. REP INITIAL DATE	
TYPE	DESCRIPTION	PRELIMINARY ENGINEER SPECIALIST PROJECT MANAGER	
(7)	1" INSULATED GLAZING UNITS 3/4" CLEAR TEMPERED (TRADITIONAL GRIDS) 3/4" STAINLESS STEEL AIR SPACE (ARGON FILLED) (SILVER SGL GRIDS) 3/4" CLEAR TEMPERED (TRADITIONAL GRIDS) SILICONE SEAL	DATE	
GLAZING SCHEDULE (SLOPED & VERTICAL) (QTY: 52)		PE STAMPS REQ'D	
TYPE	DESCRIPTION	SPECIALIST PROJECT MANAGER	
(8)	1" INSULATED GLAZING UNITS 3/4" CLEAR TEMPERED (TRADITIONAL GRIDS) 3/4" STAINLESS STEEL AIR SPACE (ARGON FILLED) (SILVER SGL GRIDS) 3/4" CLEAR TEMPERED (TRADITIONAL GRIDS) SILICONE SEAL	REVISION KEY	
GLAZING SCHEDULE (DOOR - PANEL) (QTY: 4)		LETTER DESCRIPTION DATE INITIAL	
TYPE	DESCRIPTION	A UPDATED FINAL BASE, UPDATE STEEL, UPDATE DOOR SILL TO ADA, UPDATE DETAILS 2-17-26 MAY	
(9)	FOUR (4) EXTRA PIECES OF MOST COMMON CURVE GLASS	REVISION KEY	
GLAZING SCHEDULE (SLOPED & VERTICAL) (QTY: 52)		LETTER DESCRIPTION DATE INITIAL	
TYPE	DESCRIPTION	A UPDATED FINAL BASE, UPDATE STEEL, UPDATE DOOR SILL TO ADA, UPDATE DETAILS 2-17-26 MAY	
(10)	3/4" CLEAR MONOLITHIC ANNEALED LAMINATED WITH 180° ARTIC SNOW WHITE (65%) PVB INTERLAYERS	REVISION KEY	
GLAZING SCHEDULE (DOOR - PANEL) (QTY: 4)		LETTER DESCRIPTION DATE INITIAL	
TYPE	DESCRIPTION	A UPDATED FINAL BASE, UPDATE STEEL, UPDATE DOOR SILL TO ADA, UPDATE DETAILS 2-17-26 MAY	



REVIEW PRIOR TO APPROVING SHOP DRAWINGS

IMPORTANT NOTES:
IT IS PURCHASERS RESPONSIBILITY TO VERIFY ALL DESIGN ELEMENTS AND SYSTEM INTEGRATION TO SURROUNDING ARCHITECTURE. ALL ELEVATIONS ARE VIEWED FROM THE OUTSIDE OF STRUCTURE (LOOKING IN).

PLEASE VERIFY ALL INFORMATION BEFORE APPROVING DESIGN INCLUDING ACCESSORY LOCATION, OPERATION & SWING (INCLUDING DOORS, WINDOWS, RIDGE VENTS, HEATERS, FANS, ETC), OVERALL DESIGN & DIMENSIONS, FRAME COLOR, GLASS MAKE UP, SUBSTRATES, AND CONNECTION DETAILS.

FINAL DRAWINGS MUST BE APPROVED WITHOUT MODIFICATION IN ORDER TO PROCEED TO FABRICATION. IN THE EVENT OF ANY CHANGES BY CUSTOMER, NEW SHOP DRAWINGS MUST BE PREPARED, SUBMITTED, AND APPROVED. FOR EXAMPLE, "APPROVED AS NOTED" OR ANY OTHER MODIFICATIONS TO DO NOT CONSTITUTE FINAL APPROVED SHOP DRAWINGS. PLEASE NOTE THAT FABRICATION AND LEAD TIMES WILL NOT BEGIN UNTIL FINAL APPROVAL WITHOUT CHANGES IS PROVIDED.

APPROVAL SIGNATURES THAT DESIGN AND ALL FIELD MEASUREMENTS HAVE BEEN VERIFIED AND THIS PROJECT MAY BE RELEASED FOR FABRICATION. PER OUR TERMS AND CONDITIONS, APPROVED SHOP DRAWINGS ARE FINAL AGREEMENT OF ALL DESIGN AND PRODUCTION CRITERIA AND SUPERSEDE QUOTE AND OTHER PRIOR DOCUMENTS. LEAD TIMES OFFICIALLY BEGIN UPON RECEIPT OF SIGNED SHOP DRAWINGS. IN ORDER TO EXPEDITE FABRICATION, PLEASE SIGN AND RETURN ONE (1) FULL SET SHOP DRAWINGS INCLUDING ANY PAGES WHICH MAY REFLECT DIMENSIONAL OR DETAIL ALTERATIONS.

CUSTOMER'S SIGNATURE OR MARK AT ANY LOCATION ON THIS PAGE SIGNIFIES ACCEPTANCE AND APPROVAL OF ALL SHOP OFF REQUIREMENTS INCLUDING DESIGN, DIMENSIONS, FRAME COLOR, GLAZING TYPE, ACCESSORIES, ETC FOR S.I. TO PROCEED WITH FABRICATION. ANY CHANGES TO SHOP DRAWINGS WILL RESULT IN ADDITIONAL CHARGES AND LEAD TIMES.

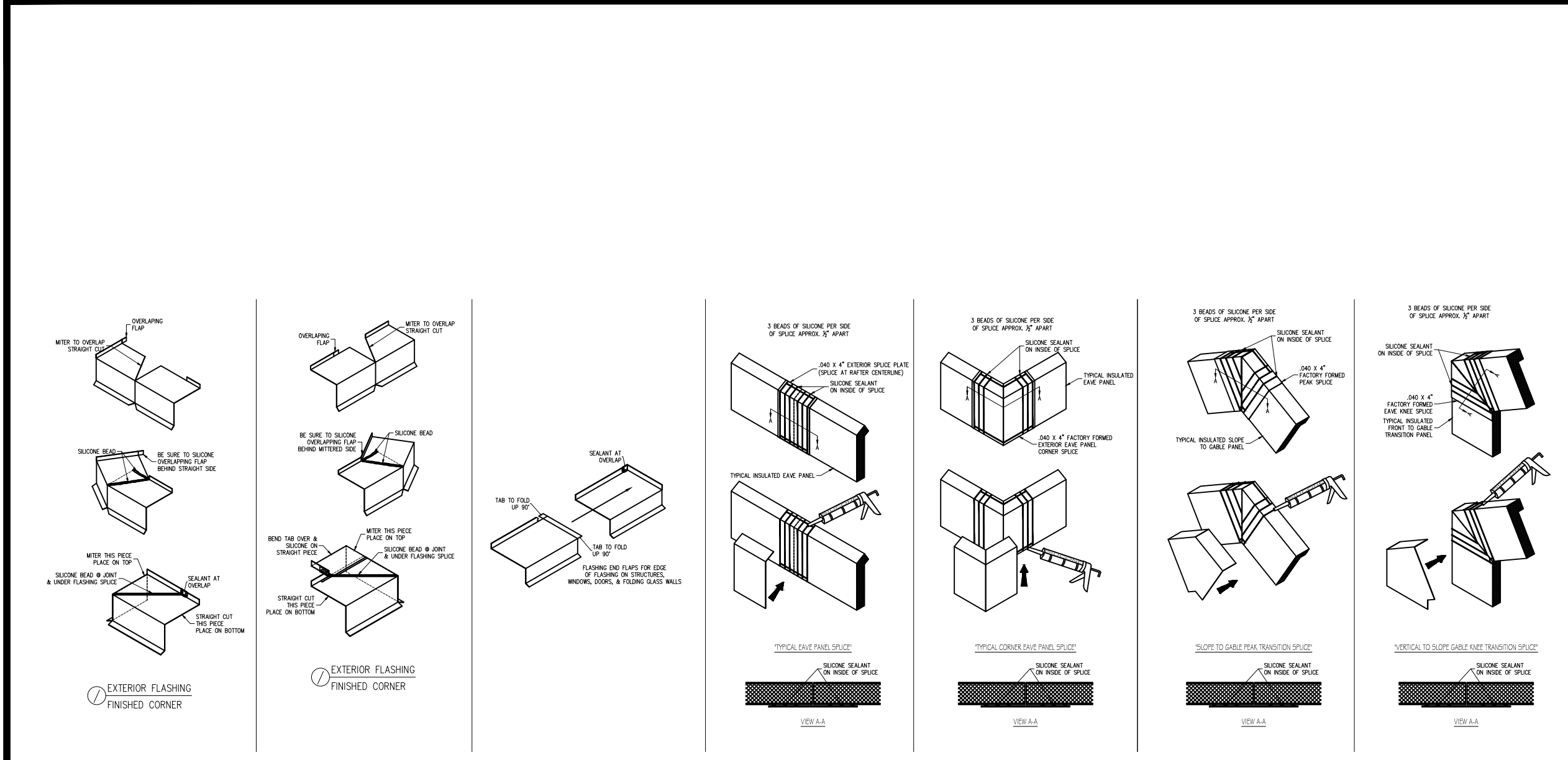
IF S.I. RECEIVES COVER PAGE ONLY, CUSTOMER CERTIFIES THAT NO CHANGES TO THE DRAWINGS ARE REQUIRED AND S.I. IS PERMITTED TO PROCEED WITH FABRICATION AS PER ITS LAST SUBMITAL.

DESIGN APPROVED BY:	X	DATE
DIMENSIONS APPROVED BY:	X	
FRAME COLOR APPROVED BY:	X	
GLAZING TYPE APPROVED BY:	X	

SPECIAL NOTES

- ANY REVISIONS REQUESTED & DRAWN AFTER PRELIMINARY ENGINEERING ARE SUBJECT TO MODIFICATION AFTER FINAL REVIEW BY THE CUSTOMER AND FINAL REVIEW BY ENGINEERING TO MEET APPLICABLE CODE.
- UNLESS OTHERWISE NOTED, SOLAR INNOVATIONS, LLC WILL ASSUME THAT THE BOTTOM OF BASEWALL IS EQUAL TO THE FINISHED FLOOR HEIGHT. THIS INCLUDES ANY JOB THAT SITS ON PRESSURE TREATED WOOD PLATES OR SITS DIRECTLY ON A CONCRETE PAD.
- SOLAR INNOVATIONS PRICE INCLUDES THE USE OF A 1/2" MAXIMUM BEAD OF SILICONE ON THE OUTSIDE PERIMETER ONLY. ALL OTHER FINISH IS TO BE PROVIDED, OR WILL REQUIRE A CONTINUOUS SHIM "BY OTHERS".

SECTION MARKER	DETAIL MARKER	BUBBLE MARKER
SECTION DESIGNATION PAGE NUMBER	DETAIL DESIGNATION PAGE NUMBER	DETAIL DESIGNATION PAGE NUMBER



SOLAR INNOVATIONS
GLASS STRUCTURES

31 ROBERTS ROAD | PINE GROVE, PA 17963
PHONE: (570) 915-1500 OR (800) 618-0669 | FAX: (800) 618-0743
WEBSITE: www.solarinnovations.com | E-MAIL: skylight@solarinnovations.com

TABLE OF CONTENTS

SHEET # - 1	COVER SHEET
SHEET # - 2	CURB PLAN
SHEET # - 3	SILL PLAN
SHEET # - 4	HEADER PLAN (BOTTOM VIEW)
SHEET # - 5	HEADER PLAN (TOP VIEW)
SHEET # - 6	RAFTER PLAN
SHEET # - 7	ROOF PLAN
SHEET # - S1-S4	STEEL ELEVATIONS
SHEET # - 8-11	RAFTER ELEVATIONS
SHEET # - 12-15	ELEVATION
SHEET # - 16-28	SECTIONS
SHEET # - 29 - 49	DETAILS

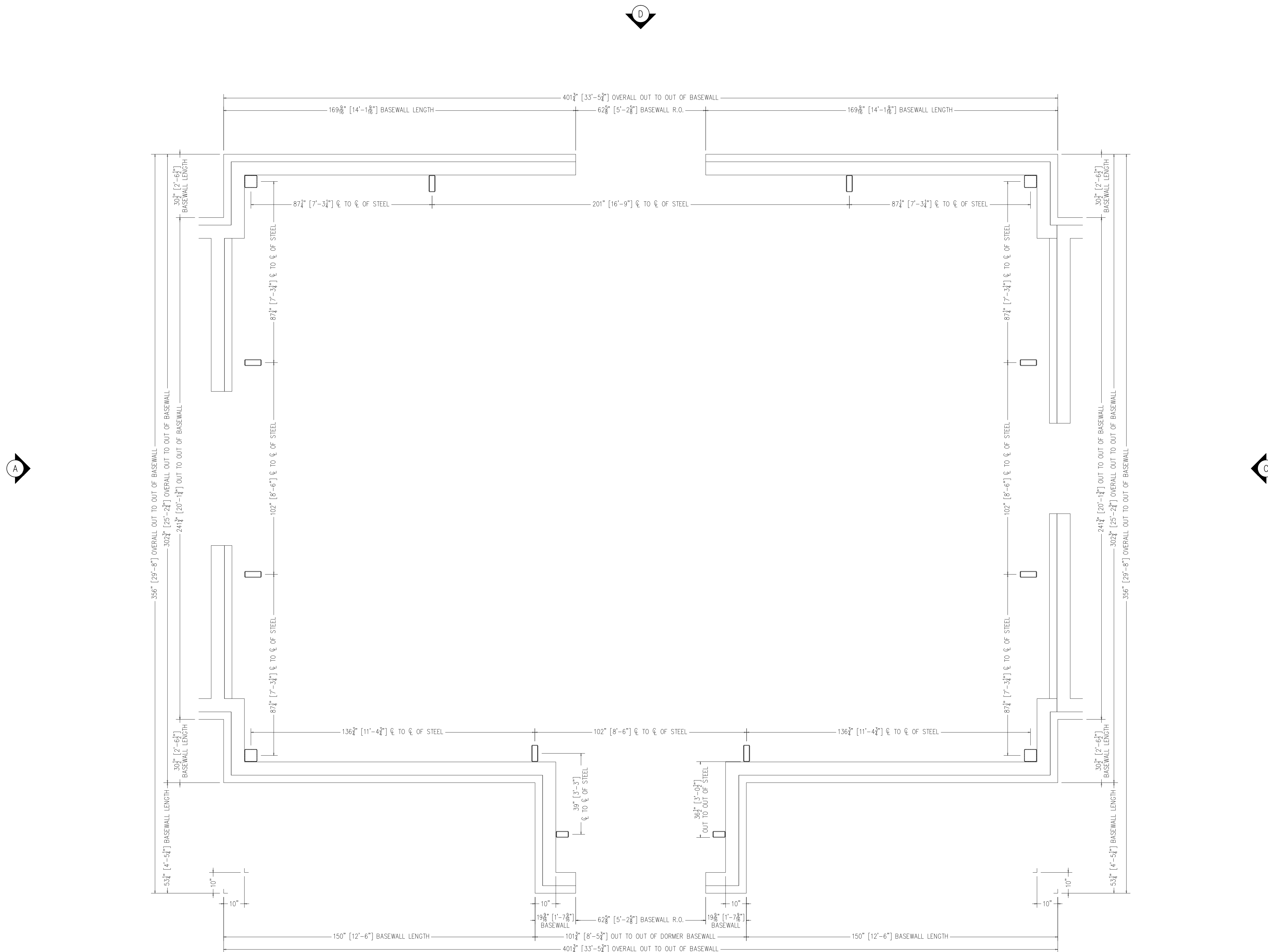
TOTAL PAGES- 49

EMCZ ENGINEERING CONSULTANTS LLC
LAWRENCE DUFFY
315 HOMESTEAD DR. LEBANON, PA, 17042
717.889.3622 LAWRENCE@EMCZEM.COM

REVISION KEY

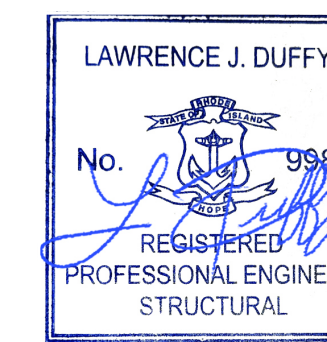
LETTER	DESCRIPTION	DATE	INITIAL
A	UPDATED FINAL BASE, UPDATE STEEL, UPDATE DOOR SILL TO ADA, UPDATE DETAILS	2-17-26	MAY

PRE. ENG.: KAE	DRAFTER: MICHAEL YANO	QUOTE: 96514	ORIGINAL DRAWING DATE: 1-27-26
OUTLISTER: EJB	PROJECT COORDINATOR: PETER W. (EXT: 3805)	JOB NO.: 19-05-211	COVER PAGE: SHEET No. 01 OF 49



CURB PLAN
SCALE: 1/2" = 1'-0"

NOTE: ALL DIMENSIONS ARE FINISHED BRICK DIMENSIONS



		MAY	BY
A	2-17-26	MAY	
	1-27-26		
		DATE	
		#	

DRAWN BY:
MICHAEL YANO
PROJECT MANAGER:
PETER W. (EXT. 3805)

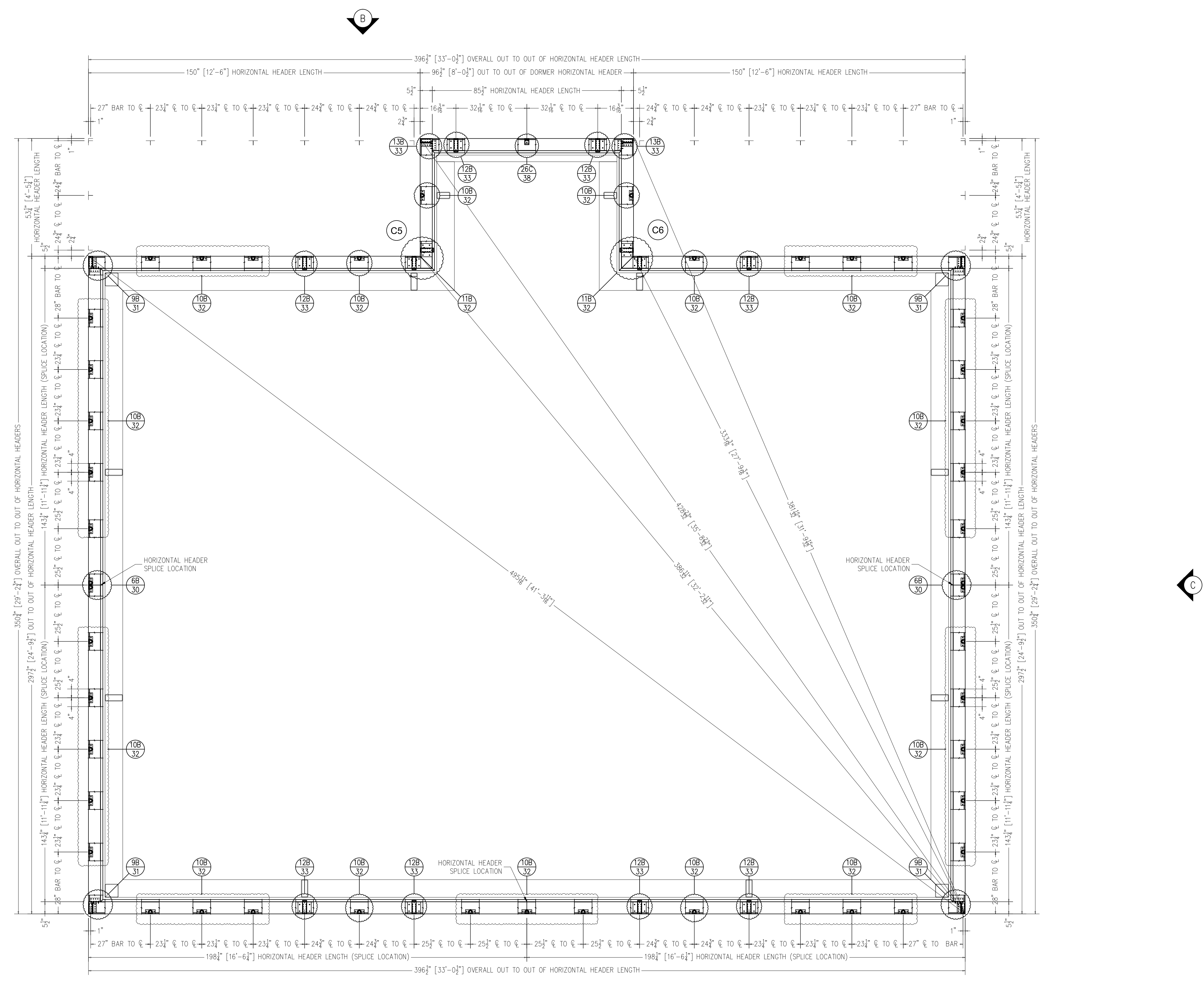
ALL DRAWINGS ARE VIEWED FROM THE EXTERIOR LOOKING IN.

DRAWING SCALE:
1/2" = 1'-0"

JOB NO.:
19-05-211

QUOTE NO.:
96514

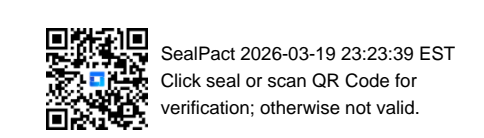
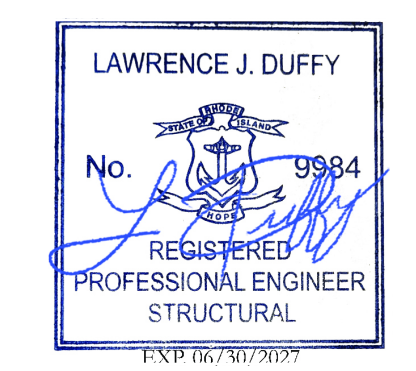
PAGE No.:
2 OF 49



HEADER PLAN (BOTTOM VIEW)

SCALE: 1/2" = 1'-0"

Unit ID	Desig.	Knee Type	Rafter Setup	Location	Stage	Qty	Pitch
A	A	2x4	Common	Inverted	1	1	34
A	B	2x4	Common	DP Ridge	1	3	30.4
A	C	G2 HGB	Common	Inverted	1	2	90
A	D	2.5x6	Common	Eave	1	4	32
A	E	2.5x6	Common	DP Ridge	1	2	32



DATE	BY
MAY	
MAY	

DRAWN BY:
MICHAEL YANO

PROJECT MANAGER:
PETER W. (EXT. 3805)

ALL DRAWINGS ARE VIEWED FROM THE EXTERIOR LOOKING IN.

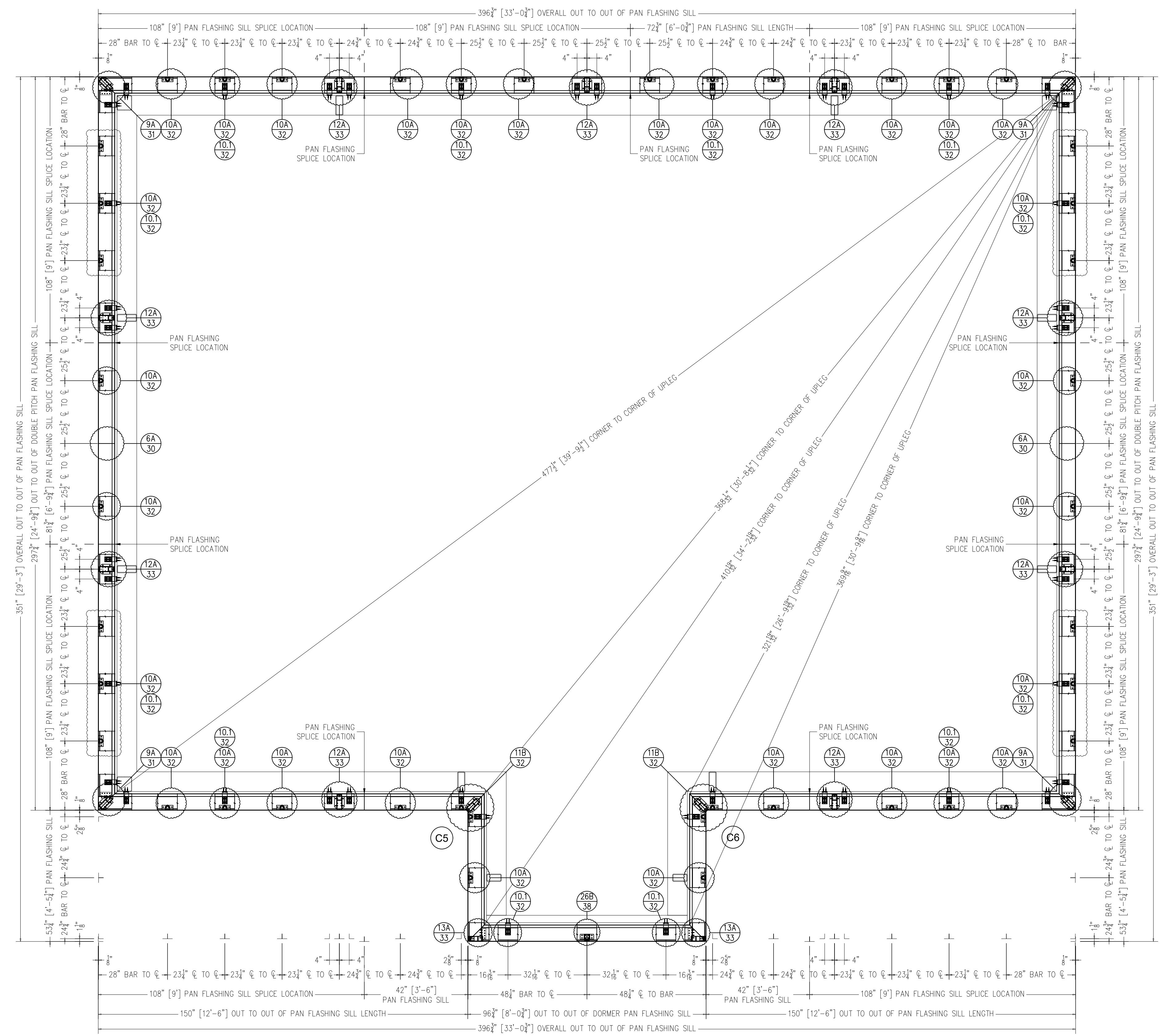
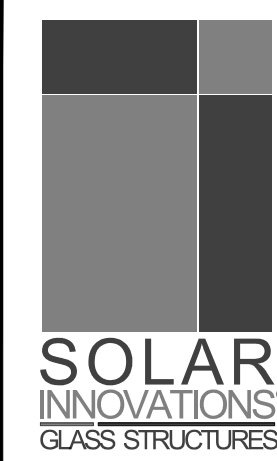
DRAWING SCALE:
1/2" = 1'-0"

JOB NO.:
19-05-211

QUOTE NO.:
96514

PAGE No.:
4 OF 49

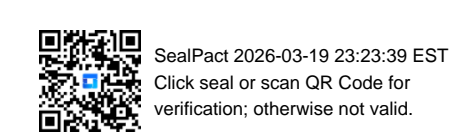
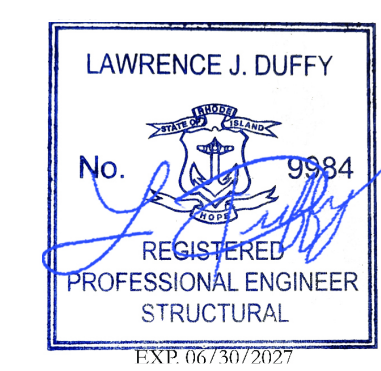
BLITHEWOLD PALM HOUSE RI - UNIT A
 HERITAGE GREENHOUSE BUILDERS INC.
 MADISON, CT, USA 06443



HEADER PLAN (TOP VIEW)

SCALE: 1/2" = 1'-0"

Unit ID	Desig.	Knee Type	Rafter Setup	Location	Stage	Qty	Pitch
A	A	2x4	Common	Inverted	1	1	34
A	B	2x4	Common	DP Ridge	1	3	30.4
A	C	G2 HGB	Common	Inverted	1	2	90
A	D	2.5x6	Common	Eave	1	4	32
A	E	2.5x6	Common	DP Ridge	1	2	32



#	DATE	BY
A	2-17-26	MAY
1	1-27-26	MAY

DRAWN BY:
MICHAEL YANO
 PROJECT MANAGER:
PETER W. (EXT. 3805)

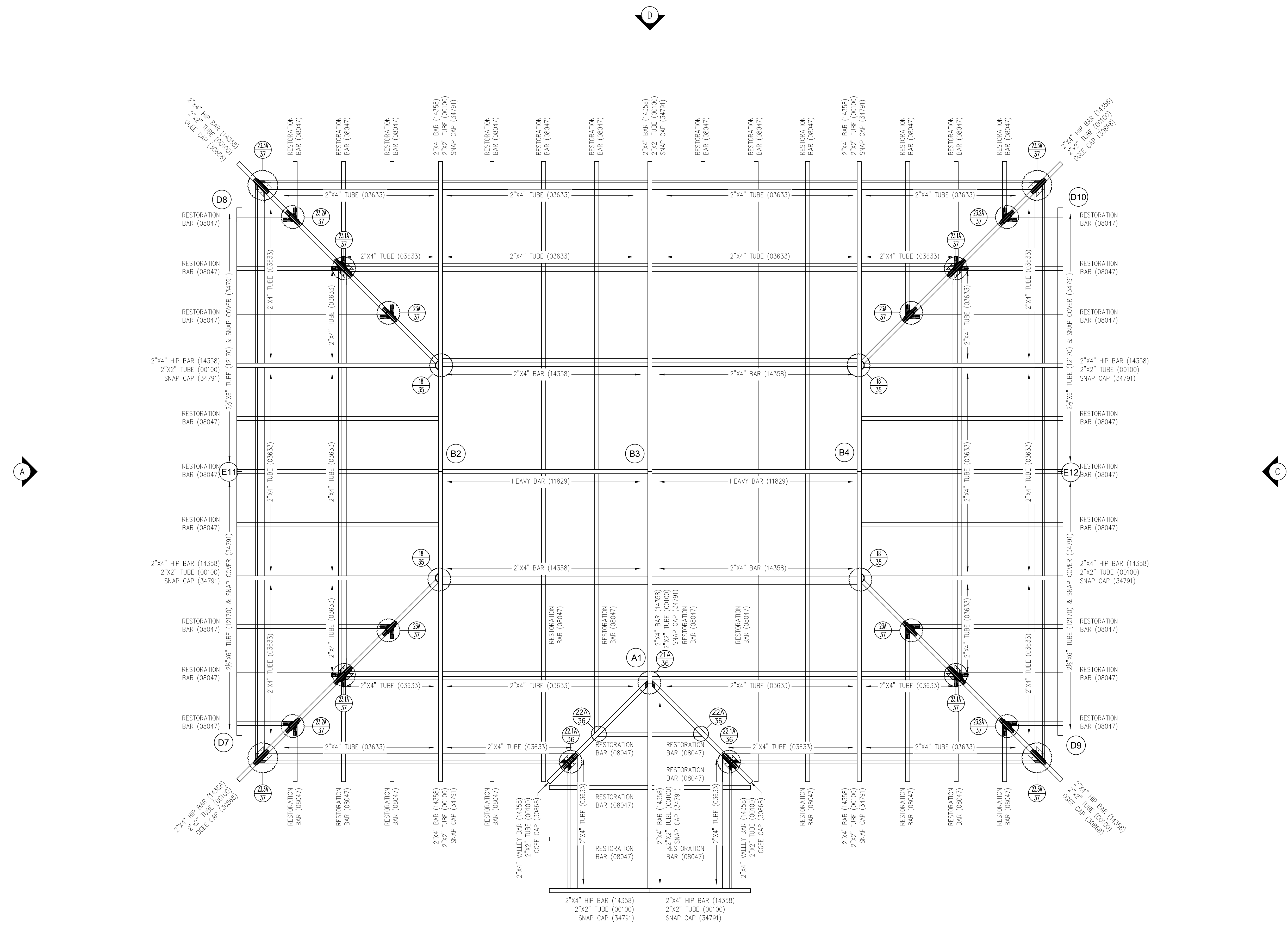
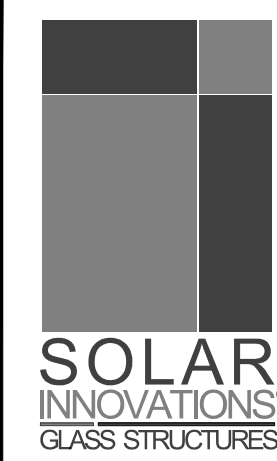
ALL DRAWINGS ARE VIEWED FROM THE EXTERIOR LOOKING IN.

DRAWING SCALE:
1/2" = 1'-0"

JOB NO.:
19-05-211

QUOTE NO.:
96514

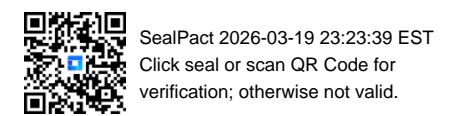
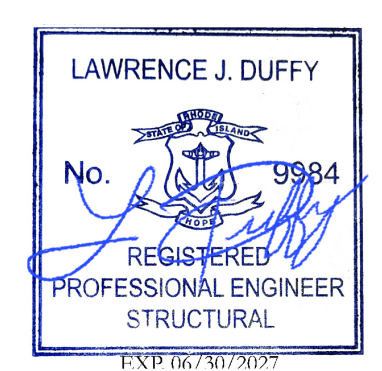
PAGE No.:
5 OF 49



RAFTER PLAN
 SCALE: 1/2" = 1'-0"

NOTE: HEADER BARS LOCATED ON HEADER PLANS (PAGE 4 & 5)

Unit ID	Desig.	Knee Type	Rafter Setup	Location	Stage	Qty	Pitch
A	A	2x4	Common	Inverted	1	1	34
A	B	2x4	Common	DP Ridge	1	3	30.4
A	C	G2 HGB	Common	Inverted	1	2	90
A	D	2.5x6	Common	Eave	1	4	32
A	E	2.5x6	Common	DP Ridge	1	2	32



DATE	BY
1-27-26	MAY
2-17-26	MAY

DRAWN BY:
MICHAEL YANO

PROJECT MANAGER:
PETER W. (EXT. 3805)

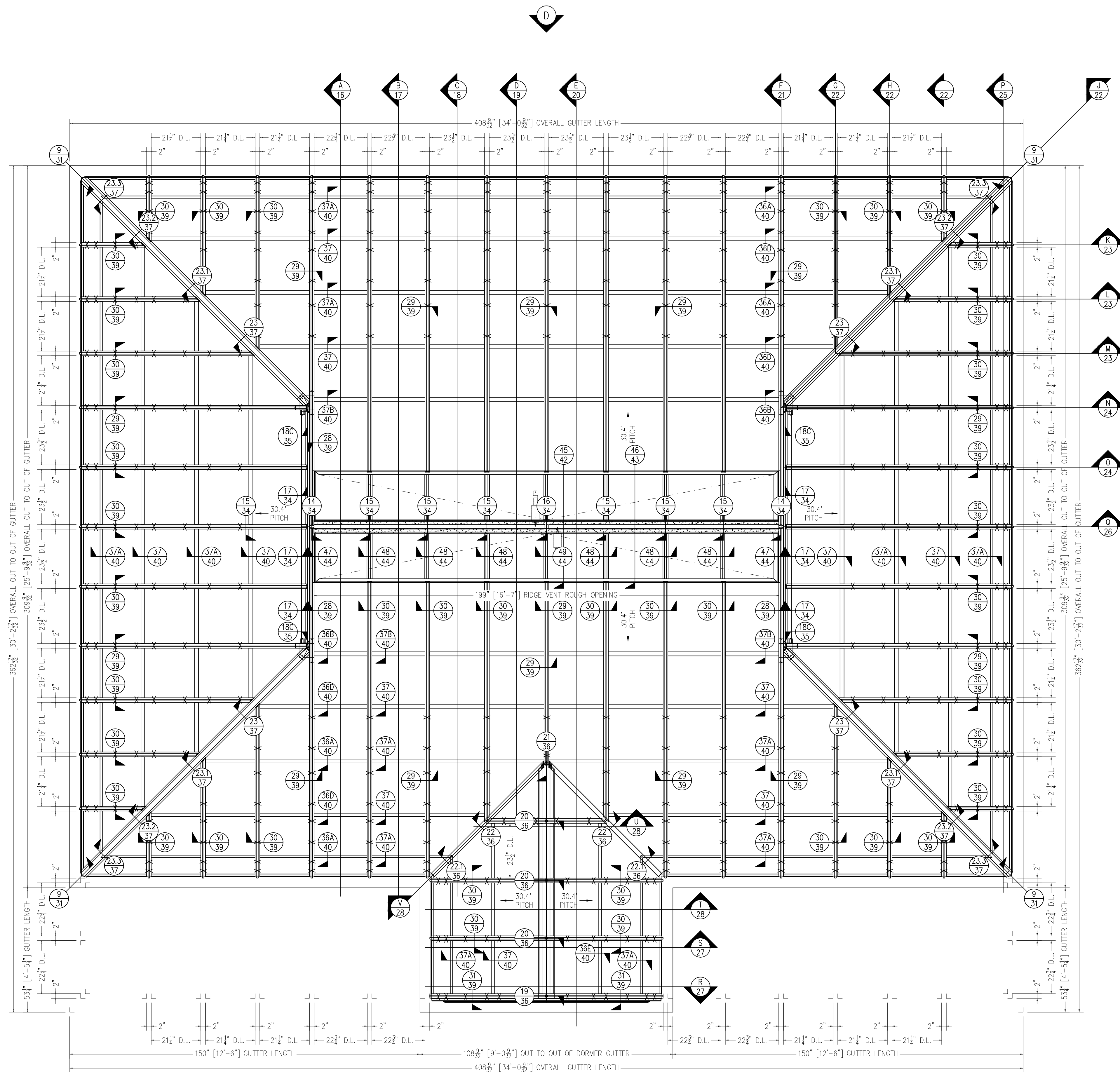
ALL DRAWINGS ARE VIEWED FROM THE EXTERIOR LOOKING IN.

DRAWING SCALE:
1/2" = 1'-0"

JOB NO.:
19-05-211

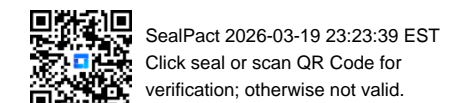
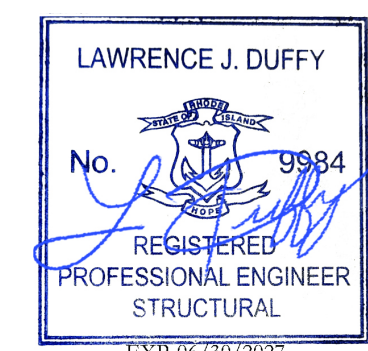
QUOTE NO.:
96514

PAGE No.:
6 OF 49



X = GLASS SHOE LOCATION

ROOF PLAN
MUNTINS - LEVEL 1
SCALE: 1/2" = 1'-0"



		MAY	BY
A	2-17-26	MAY	
	1-27-26		
		DATE	

DRAWN BY:
MICHAEL YANO
PROJECT MANAGER:
PETER W. (EXT. 3805)

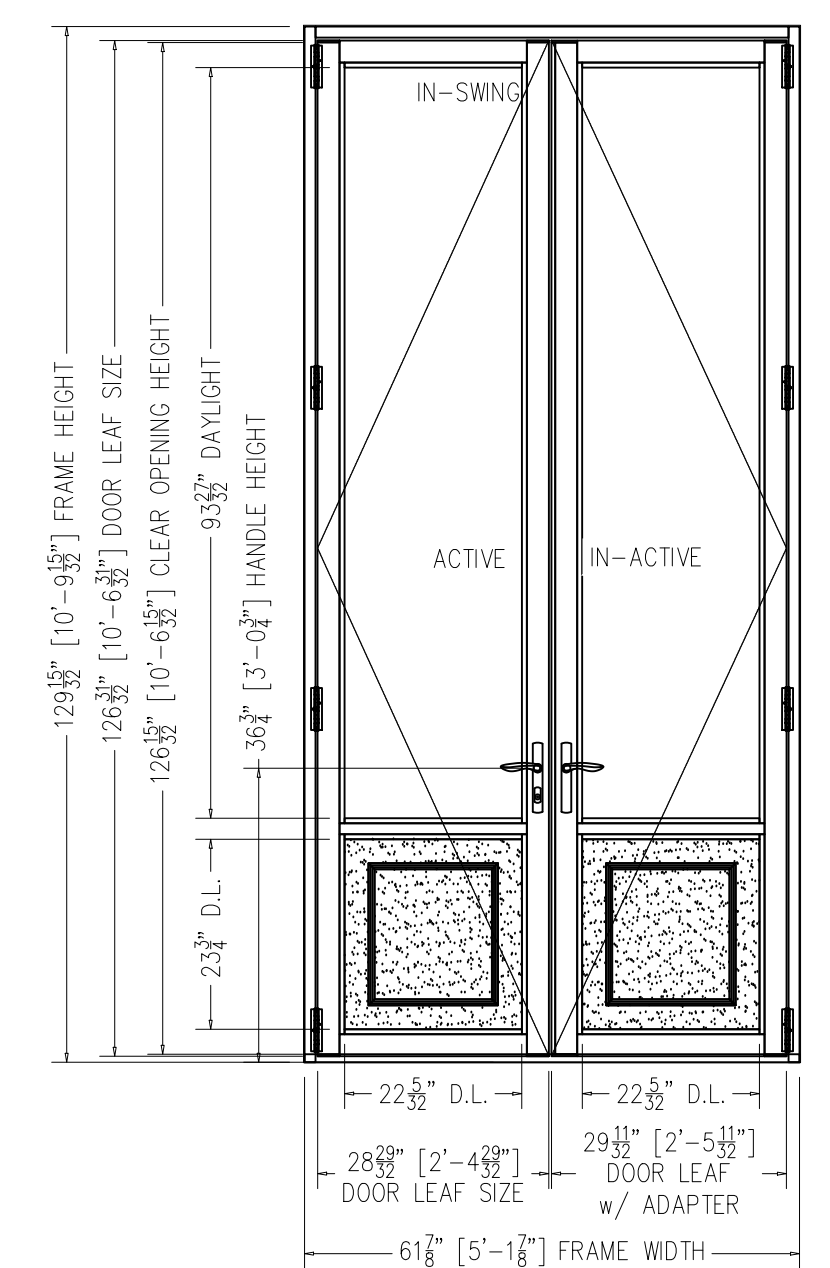
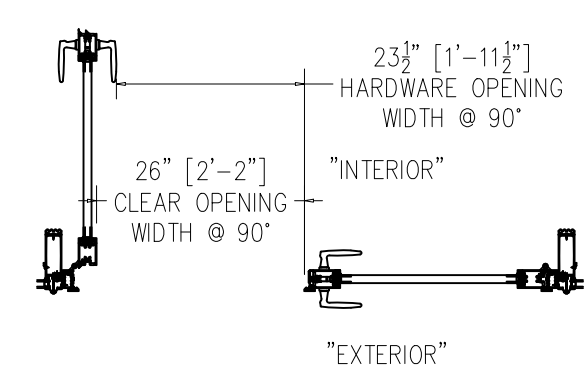
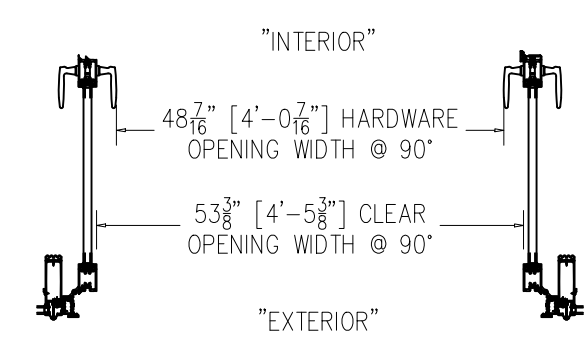
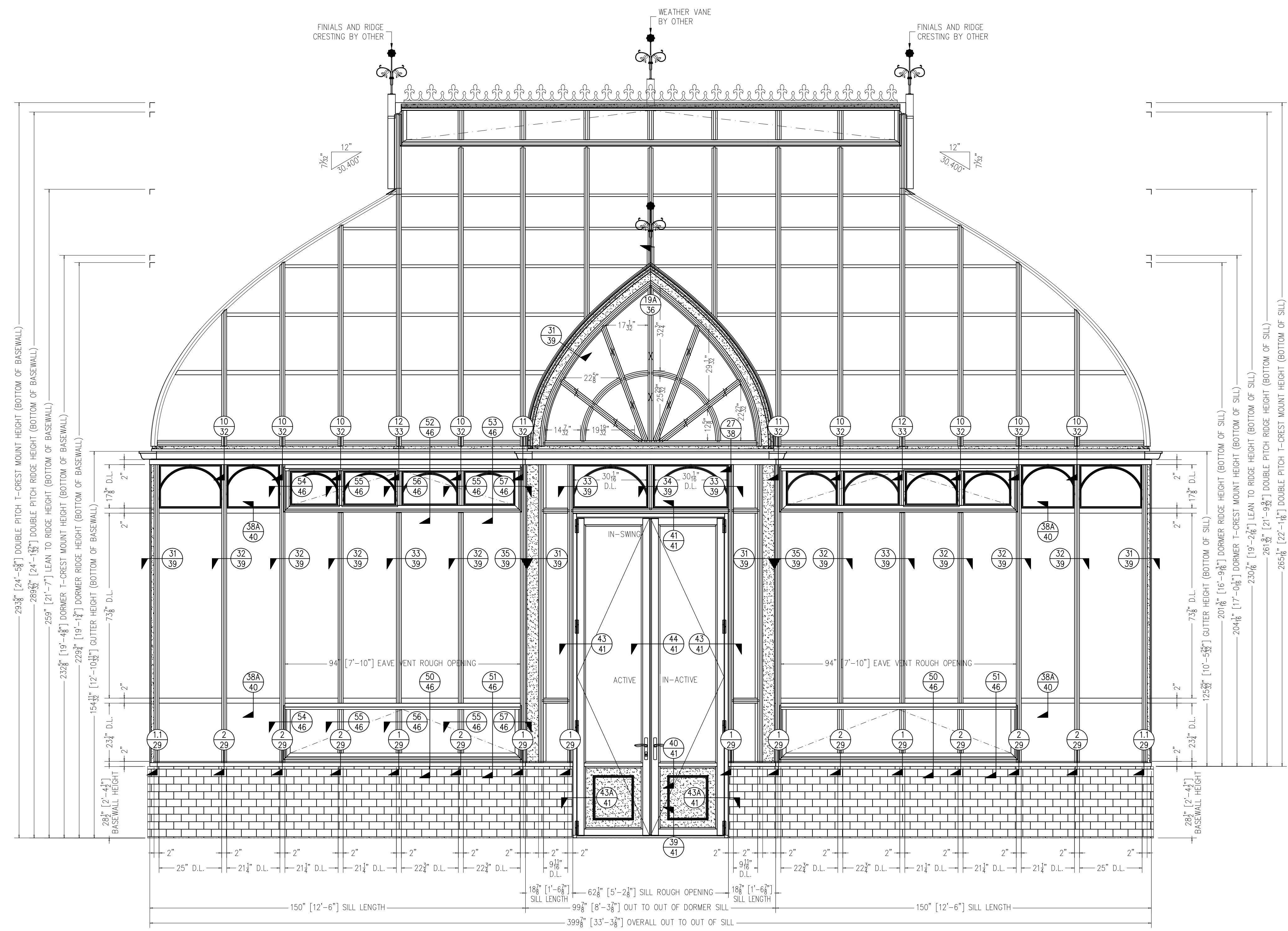
ALL DRAWINGS ARE VIEWED FROM THE EXTERIOR LOOKING IN.

DRAWING SCALE:
1/2" = 1'-0"

JOB NO.:
19-05-211

QUOTE NO.:
96514

PAGE No.:
7 OF 49

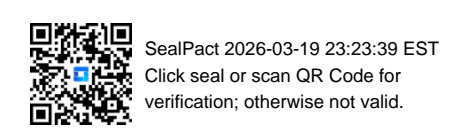


X = GLASS SHOE LOCATION

ELEVATION B MUNTINS - LEVEL 1

SCALE: 1/2" = 1'-0"

LAWRENCE J. DUFFY
No. 9984
REGISTERED
PROFESSIONAL ENGINEER
STRUCTURAL
EXP. 06/30/2027



		MAY	BY
A	2-17-26		
	1-27-26		
		DATE	
		#	

DRAWN BY:
MICHAEL YANO

PROJECT MANAGER:
PETER W. (EXT. 3805)

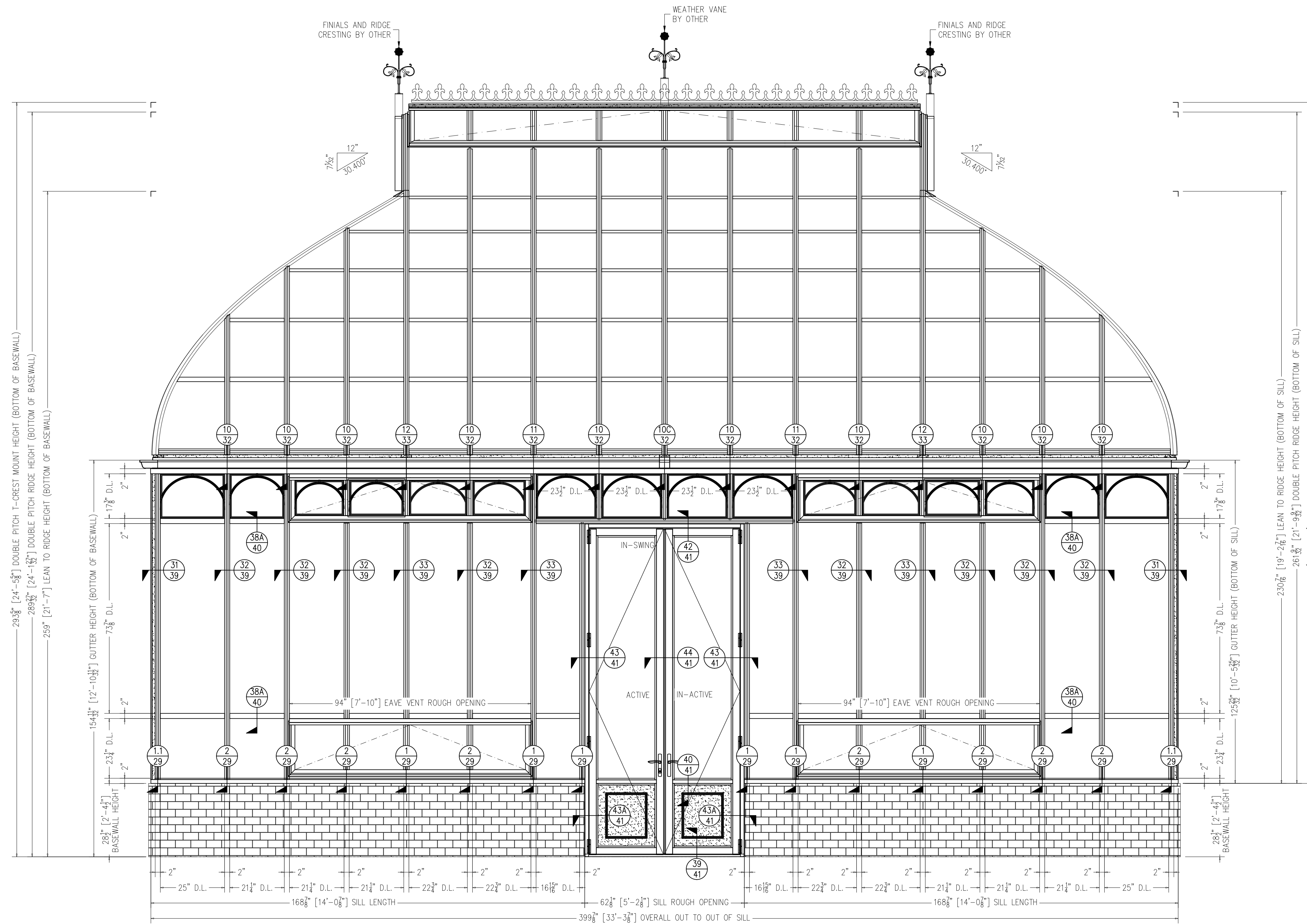
ALL DRAWINGS ARE VIEWED FROM THE EXTERIOR LOOKING IN.

DRAWING SCALE:
1/2" = 1'-0"

JOB NO.:
19-05-211

QUOTE NO.:
96514

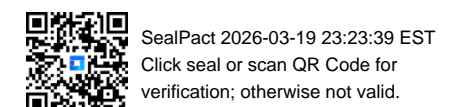
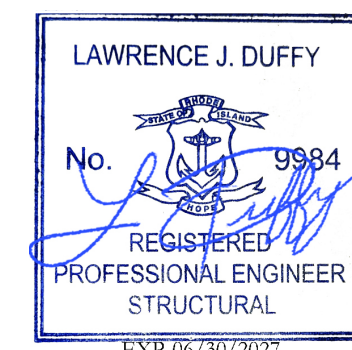
PAGE No.:
13 OF 49



ELEVATION D

MUNTINS - LEVEL 1

SCALE: 1/2" = 1'-0"



		MAY	BY
A	2-17-26	MAY	
	1-27-26	MAY	
		DATE	
		#	

DRAWN BY:
MICHAEL YANO
PROJECT MANAGER:
PETER W. (EXT. 3805)

ALL DRAWINGS ARE VIEWED FROM THE EXTERIOR LOOKING IN.

DRAWING SCALE:
1/2" = 1'-0"

JOB NO.:
19-05-211

QUOTE NO.:
96514

PAGE No.:
15 OF 49