

## 417 Hope St Continued Items From the June Meeting

**11. Dormers:** Two new dormers are proposed at the rear of the main building's roof facing west. Please see elevation drawings for reference. The dormer siding is to be painted clapboard with white flat stock trim and the windows are to be six over six divided-light Custom Wooden window units by a window restoration expert to match the existing windows. We will also install storm windows to improve the life expectancy of the custom wooden units.

Please see plan **page 9** for locations of proposed dormers.

**13. Exterior Trim:** we propose using LP Smart side, a treated engineered wood substrate for all flat stock on the exterior of the building. We propose attempting to restore or recreate the more ornate trim with cedar that is built up over the flat stock. **(Exhibit 13.1)**

**15. Entry doors for rear unit one and unit two:** We will utilize reclaimed wood doors at locations of new entries for unit two and rear unit access. Please see drawing **Pages 8 & 9** for proposed locations and similar style to what we are planning to procure. Renderings show doors being added at two existing window openings with current door opening being bricked up.

Exhibit 13.1

# ADVANCED DURABILITY FOR LONGER LASTING BEAUTY.®





# ENGINEERED TO IMPRESS.

With over 20 years of successful performance, it's easy to see why the LP® SmartSide® brand is one of the fastest-growing brands of siding materials in the United States.

## A PIONEER OF CHANGE

LP has redefined traditional building materials with treated engineered wood products that are designed to offer game-changing durability, beauty and workability. LP is a building industry leader in a category that is shaping the way homes, outdoor building structures, and light commercial properties are being built.

See the innovation that goes into making LP SmartSide products at [YouTube.com/LPSmartSide](https://www.youtube.com/LPSmartSide).

Featured: LP SmartSide Lap, Panel & Trim (Board & Batten), Trim & Fascia



# BECAUSE STRENGTH IS MAKE OR BREAK



## A NATURAL DEFENSE AGAINST NATURE

All LP® SmartSide® products are treated to the core through our proprietary SmartGuard® process. With four components of protection, the SmartGuard process adds strength and helps LP SmartSide products withstand impacts, freeze/thaw cycles, high humidity, fungal decay and more.

See more about how LP SmartSide products are made at [YouTube.com/LPSmartSide](https://www.youtube.com/LPSmartSide).



## FOUR COMPONENTS OF PROTECTION

LP's proprietary SmartGuard® manufacturing process ensures that every LP SmartSide Trim & Siding product is treated with an advanced formula of adhesive resins, water-resistant waxes and zinc borate, after which a water-resistant, resin-saturated overlay is bonded to the product. The result: four components of protection against water damage, termites and fungal decay.



RESINS



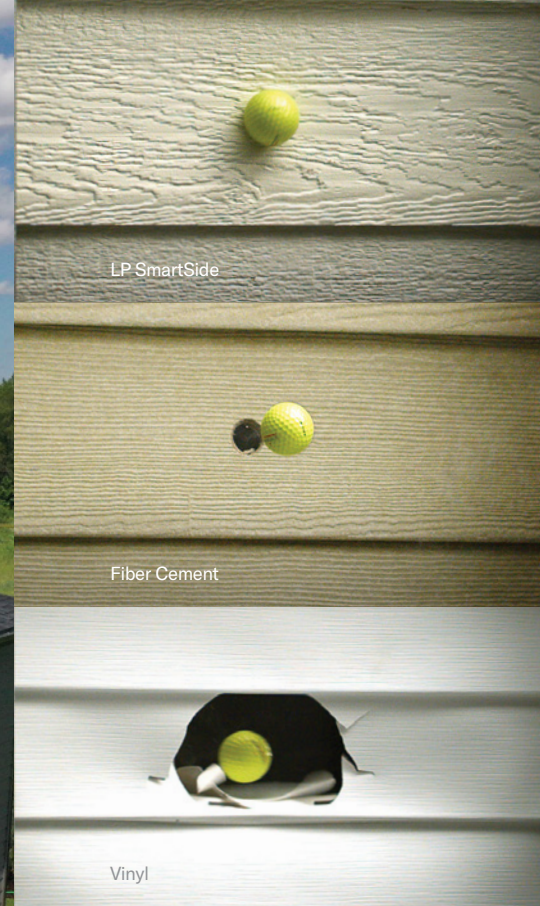
WAXES



ZINC



OVERLAY



## OUTSTANDING IMPACT RESISTANCE

Testing shows that LP SmartSide strand products resist impact better than vinyl and fiber cement siding, which means they can stand up better against everything from everyday bumps to airborne storm debris. And because it doesn't break as easily as fiber cement siding, LP SmartSide strand siding is also easier to handle and install, and results in less waste.



## HAIL AND WIND RESISTANCE

Third-party test results demonstrate that LP SmartSide lap siding resisted hail damage better than fiber cement and vinyl. In fact, the LP SmartSide warranty covers impacts from hail up to 1.75" in diameter. LP SmartSide lap siding is also designed to withstand tough storms with wind gusts of up to 200 miles per hour. Refer to ESR-1301, Table 2B, Lap Siding.



LP SmartSide product testing in Hilo, Hawaii



Untreated wood (left), LP SmartSide (right)

## RESISTANCE TO FUNGAL DECAY AND TERMITES

Since 1996, LP SmartSide strand substrate siding has undergone brutal testing in Hilo, Hawaii. An average temperature of more than 70 degrees, high levels of humidity, and almost 170 inches of annual rainfall make Hilo's climate the perfect breeding ground for termites, moisture and fungal decay. Yet our Exterior Exposure Program continues to validate that LP SmartSide siding performs over time.

## BACKED BY STRONG WARRANTIES

LP has your back with an industry-leading, transferrable limited warranty for LP® SmartSide® products: a 5-year 100% labor and material replacement warranty with a 50-year prorated limited warranty.

For complete warranty details visit [LPCorp.com/Literature](https://www.lpcorp.com/Literature)





## WORKS THE WAY WOOD IS SUPPOSED TO

LP® SmartSide® treated engineered wood siding cuts out the time you spend dealing with warped and split pieces when properly stored and applied. Virtually every piece leaves the mill straight and ready to use. Plus, you'll get lengths up to 16', which may mean fewer seams and less waste to haul off the site.

## MAKES BUILDING EASIER, FASTER, MORE EFFICIENT

LP SmartSide Trim & Siding cuts with standard woodworking tools, unlike fiber cement cladding that recommends expensive diamond blades. LP SmartSide products weigh less, resist breakage during handling, and make installation more efficient. Plus, LP SmartSide products come pre-primed and ready to paint to help you save time.

## LP HAS WORKABILITY NAILED

- Works and cuts like traditional wood
- Requires fewer tools
- Weighs less, easier to carry, less breakage than fiber cement
- Longer lengths may mean fewer seams and less waste

Watch our [How It's Made videos](#) to see how LP makes treated engineered wood products last longer at [YouTube.com/LPSmartSide](#).





## GROW WITH US

### A SMART CHOICE FOR OUR PLANET

LP® SmartSide® Trim & Siding products are must-have materials to help builders qualify for green building programs. Plus, many homeowners and building owners are demanding sustainable products that have minimal impact on our environment.



We're not just building for the future; we're helping to protect it by using Sustainable Forestry Initiative® (SFI) certified forest management and fiber sourcing systems to help ensure that our wood comes from well-managed forests.

### NATURALLY SUSTAINABLE

The LP SmartSide manufacturing process begins with wood, a renewable resource, grown and gathered under strict SFI standards. We target fast-growing trees and use 99% of the log for either the product or the fuel to make it. Plus, all binding agents and resins are low-emitting.

### RESPONSIBLY MADE WITH WOOD

- Responsibly made with a renewable resource—wood
- 99% of the log is used
- Qualifies for green building programs

**Learn more about LP's environmental programs at [LPCorp.com](https://www.lpcorp.com).**



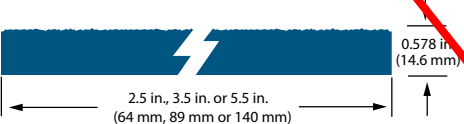
Specifications: LP® SmartSide® Trim

CEDAR TEXTURE TRIM

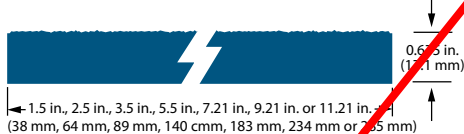
THE CLASSIC APPEARANCE OF CEDAR

- Interior or exterior use, including corner boards, windows and doors
- Narrow widths save cutting time
- Pre-primed for exceptional paint adhesion
- 16’ length can result in faster installation and fewer seams
- Treated engineered wood strand substrate

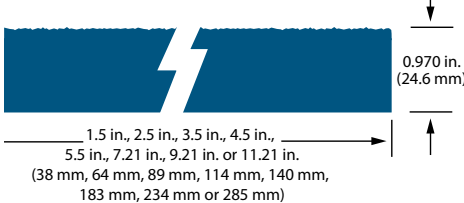
190 SERIES CEDAR TEXTURE TRIM



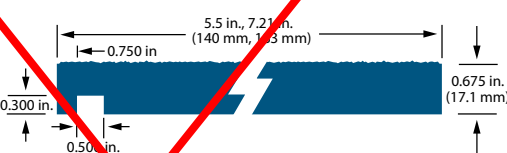
440 SERIES CEDAR TEXTURE TRIM



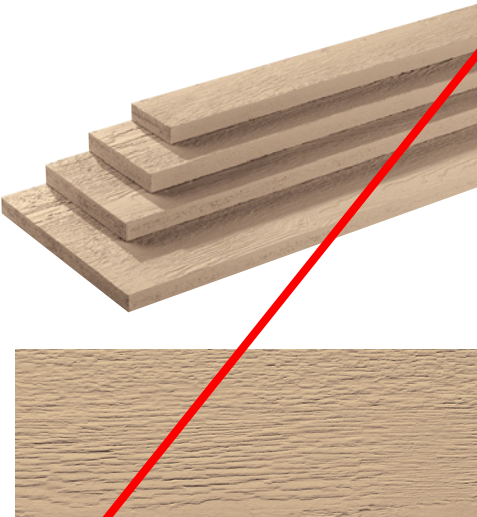
540 SERIES CEDAR TEXTURE TRIM



440 SERIES CEDAR TEXTURE PLOUGHED FASCIA



DESCRIPTION	LENGTH	ACTUAL WIDTH	THICKNESS	PID NUMBER	WEIGHT
190 Series Cedar Texture Trim	16 ft. (192 in.)(4.9 m)	2.50 in. (64 mm)	0.578 in. (14.6 mm)	28448	2 PSF
	16 ft. (192 in.)(4.9 m)	3.50 in. (89 mm)	0.578 in. (14.6 mm)	28450	2 PSF
	16 ft. (192 in.)(4.9 m)	5.50 in. (140 mm)	0.578 in. (14.6 mm)	28452	2 PSF
440 Series Cedar Texture Trim	16 ft. (192 in.)(4.9 m)	1.50 in. (38 mm)	0.675 in. (17.1 mm)	25877	2 PSF
	16 ft. (192 in.)(4.9 m)	2.50 in. (64 mm)	0.675 in. (17.1 mm)	25878	2 PSF
	16 ft. (192 in.)(4.9 m)	3.50 in. (89 mm)	0.675 in. (17.1 mm)	25880	2 PSF
	16 ft. (192 in.)(4.9 m)	5.50 in. (140 mm)	0.675 in. (17.1 mm)	25882	2 PSF
	16 ft. (192 in.)(4.9 m)	7.21 in. (183 mm)	0.675 in. (17.1 mm)	25883	2 PSF
	16 ft. (192 in.)(4.9 m)	9.21 in. (234 mm)	0.675 in. (17.1 mm)	25884	2 PSF
540 Series Cedar Texture Trim	16 ft. (192 in.)(4.9 m)	1.50 in. (38 mm)	0.970 in. (24.6 mm)	25886 *	3 PSF
	16 ft. (192 in.)(4.9 m)	2.50 in. (64 mm)	0.970 in. (24.6 mm)	25887 *	3 PSF
	16 ft. (192 in.)(4.9 m)	3.50 in. (89 mm)	0.970 in. (24.6 mm)	25888	3 PSF
	16 ft. (192 in.)(4.9 m)	4.50 in. (114 mm)	0.970 in. (24.6 mm)	25889	3 PSF
	16 ft. (192 in.)(4.9 m)	5.50 in. (140 mm)	0.970 in. (24.6 mm)	25890	3 PSF
	16 ft. (192 in.)(4.9 m)	7.21 in. (183 mm)	0.970 in. (24.6 mm)	25891	3 PSF
	16 ft. (192 in.)(4.9 m)	9.21 in. (234 mm)	0.970 in. (24.6 mm)	25892	3 PSF
	16 ft. (192 in.)(4.9 m)	11.21 in. (285 mm)	0.970 in. (24.6 mm)	25893	3 PSF
440 Series Cedar Texture Ploughed Fascia	16 ft. (192 in.)(4.9 m)	5.50 in. (140 mm)	0.675 in. (17.1 mm)	27240 *	2 PSF
	16 ft. (192 in.)(4.9 m)	7.21 in. (183 mm)	0.675 in. (17.1 mm)	27819 *	2 PSF



Cedar Texture

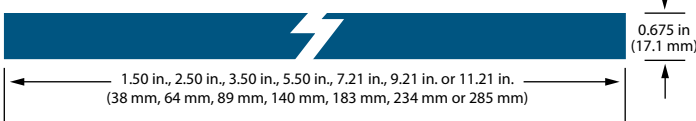
Specifications: LP® SmartSide® Trim

SMOOTH FINISH TRIM

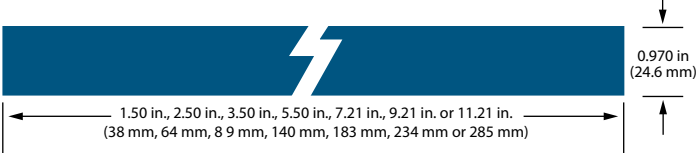
SMOOTH APPEARANCE, ADVANCED DURABILITY OF ENGINEERED WOOD

- Holds up in extreme weather, including moisture, hail, freeze/thaw cycles, and up to 200 mph wind gusts
- Treated with the SmartGuard® process for superior protection against the weather, fungal decay and termites
- 16’ length can result in faster installation and fewer seams
- Pre-primed for exceptional paint adhesion
- Backed by an industry-leading 5/50-year limited warranty
- Treated engineered wood strand substrate

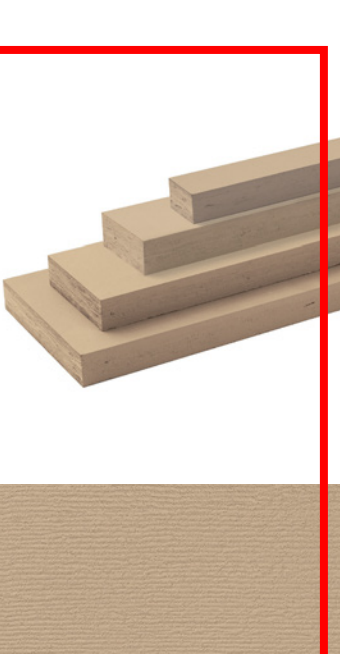
440 SERIES SMOOTH FINISH TRIM



540 SERIES SMOOTH FINISH TRIM



DESCRIPTION	LENGTH	ACTUAL WIDTH	THICKNESS	PID NUMBER	WEIGHT
440 Series Smooth Finish Trim	16 ft. (192 in.)(4.9 m)	1.50 in. (38 mm)	0.675 in. (17.1 mm)	41640	2 PSF
	16 ft (192 in.) (4.9 m)	2.50 in. (64 mm)	0.675 in. (17.1 mm)	41627	2 PSF
	16 ft. (192 in.)(4.9 m)	3.50 in. (89 mm)	0.675 in. (17.1 mm)	41420	2 PSF
	16 ft. (192 in.)(4.9 m)	5.50 in. (140 mm)	0.675 in. (17.1 mm)	41422	2 PSF
	16 ft. (192 in.)(4.9 m)	7.21 in. (183 mm)	0.675 in. (17.1 mm)	41423	2 PSF
	16 ft. (192 in.)(4.9 m)	9.21 in. (234 mm)	0.675 in. (17.1 mm)	41492	2 PSF
540 Series Smooth Finish Trim	16 ft. (192 in.)(4.9 m)	1.50 in. (38 mm)	0.970 in. (24.6 mm)	41629	3 PSF
	16 ft. (192 in.)(4.9 m)	2.50 in. (64 mm)	0.970 in. (24.6 mm)	41628	3 PSF
	16 ft. (192 in.)(4.9 m)	3.50 in. (89 mm)	0.970 in. (24.6 mm)	41342	3 PSF
	16 ft. (192 in.)(4.9 m)	5.50 in. (140 mm)	0.970 in. (24.6 mm)	41343	3 PSF
	16 ft. (192 in.)(4.9 m)	7.21 in. (183 mm)	0.970 in. (24.6 mm)	41344	3 PSF
	16 ft. (192 in.)(4.9 m)	9.21 in. (234 mm)	0.970 in. (24.6 mm)	41345	3 PSF
	16 ft. (192 in.)(4.9 m)	11.21 in. (285 mm)	0.970 in. (24.6 mm)	41494	3 PSF

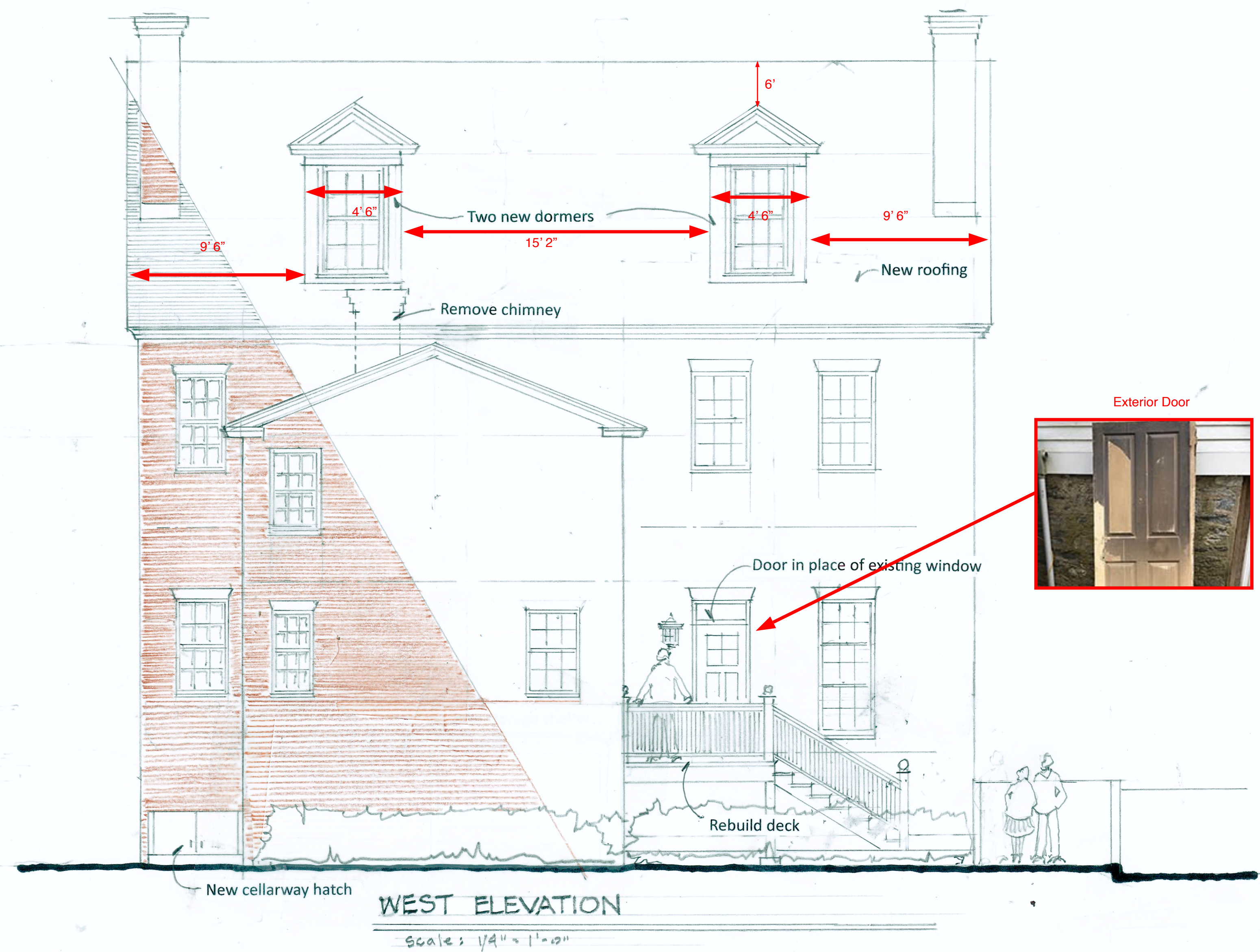


Smooth Finish

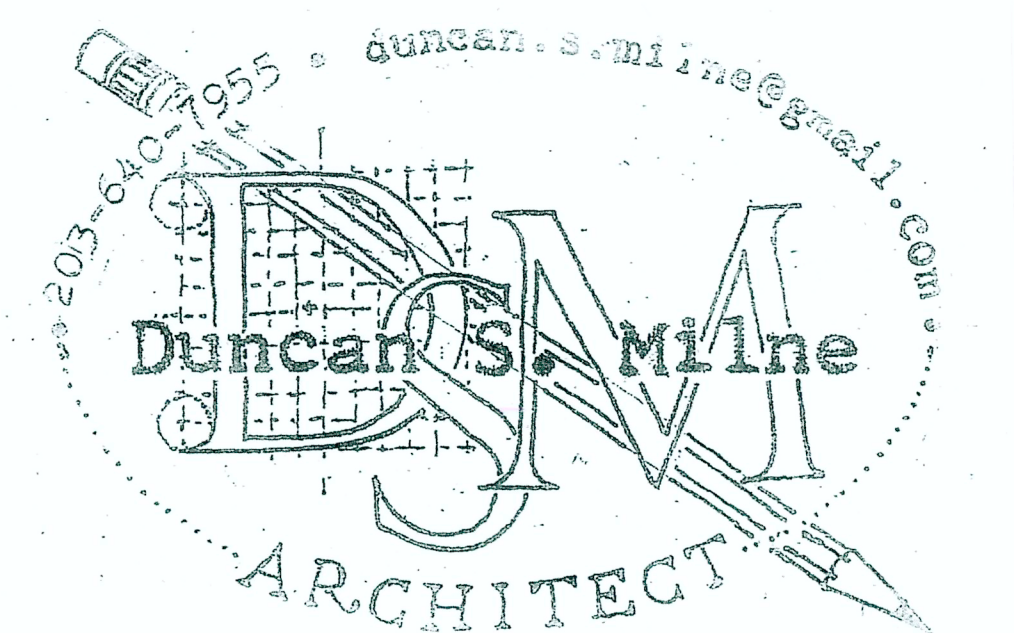
See LPSmartSide.com for product details.  
Please contact your local LP SmartSide sales representative for product availability. | Metric units are rounded. | PSF = Pounds Per Square Foot

\*Special order item. Requires minimum quantity and extended lead times. | Metric units are rounded. | PSF = Pounds Per Square Foot



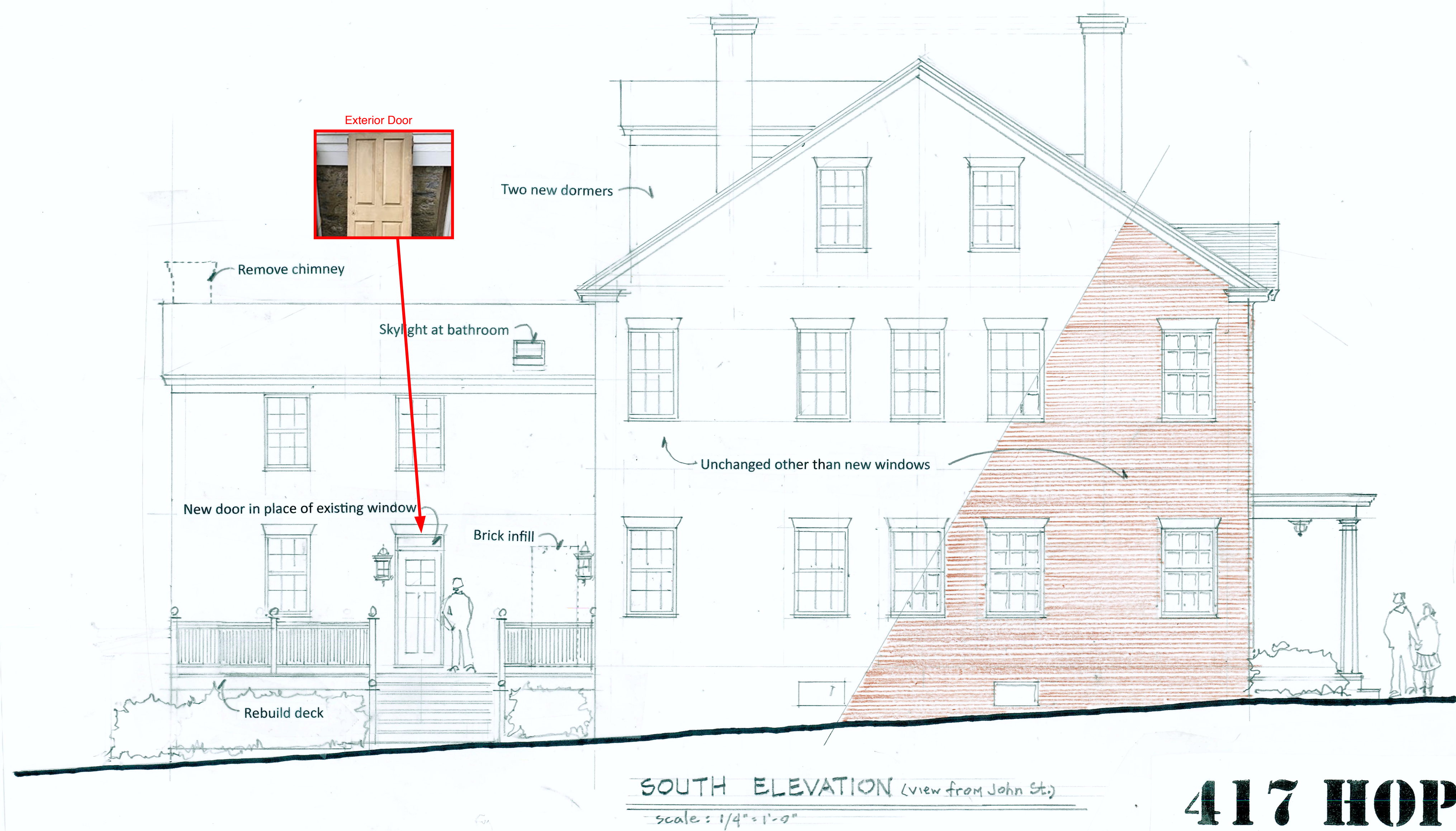


**417 HOPE**

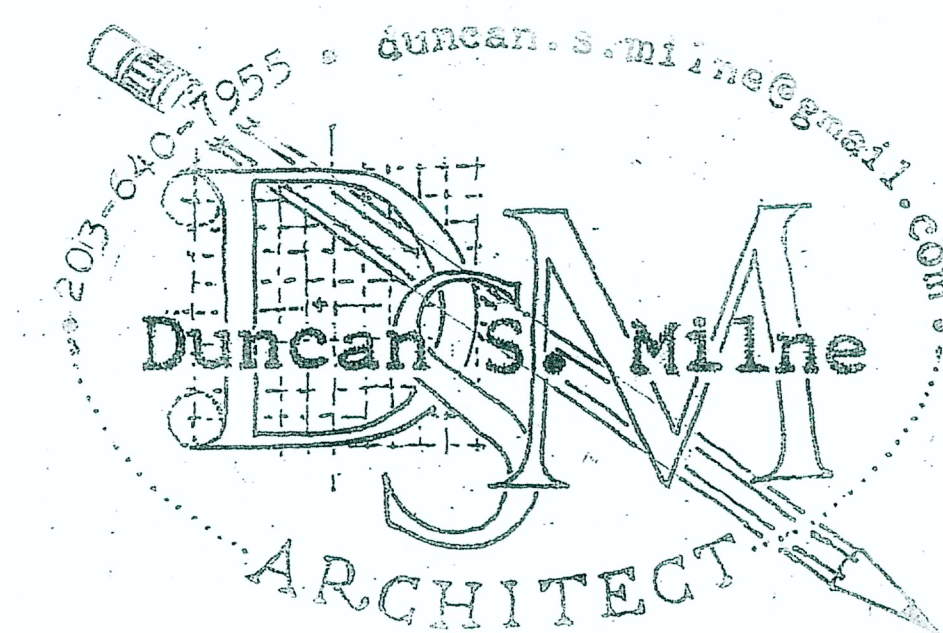


253 Main Street, Durham, Ct. 06422  
www.DSM-architect.com





**417 HOPE**



253 Main Street, Durham, Ct. 06422  
 www.DSM.architect.com





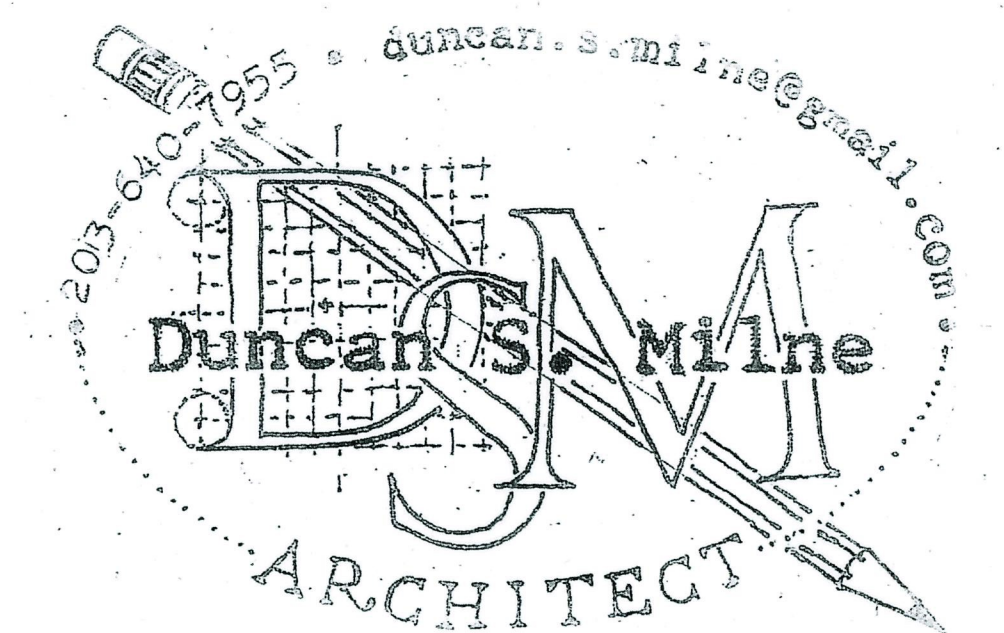
North alley façade unchanged other than new windows

(One First floor window in the lower structure beyond to be brcked up)



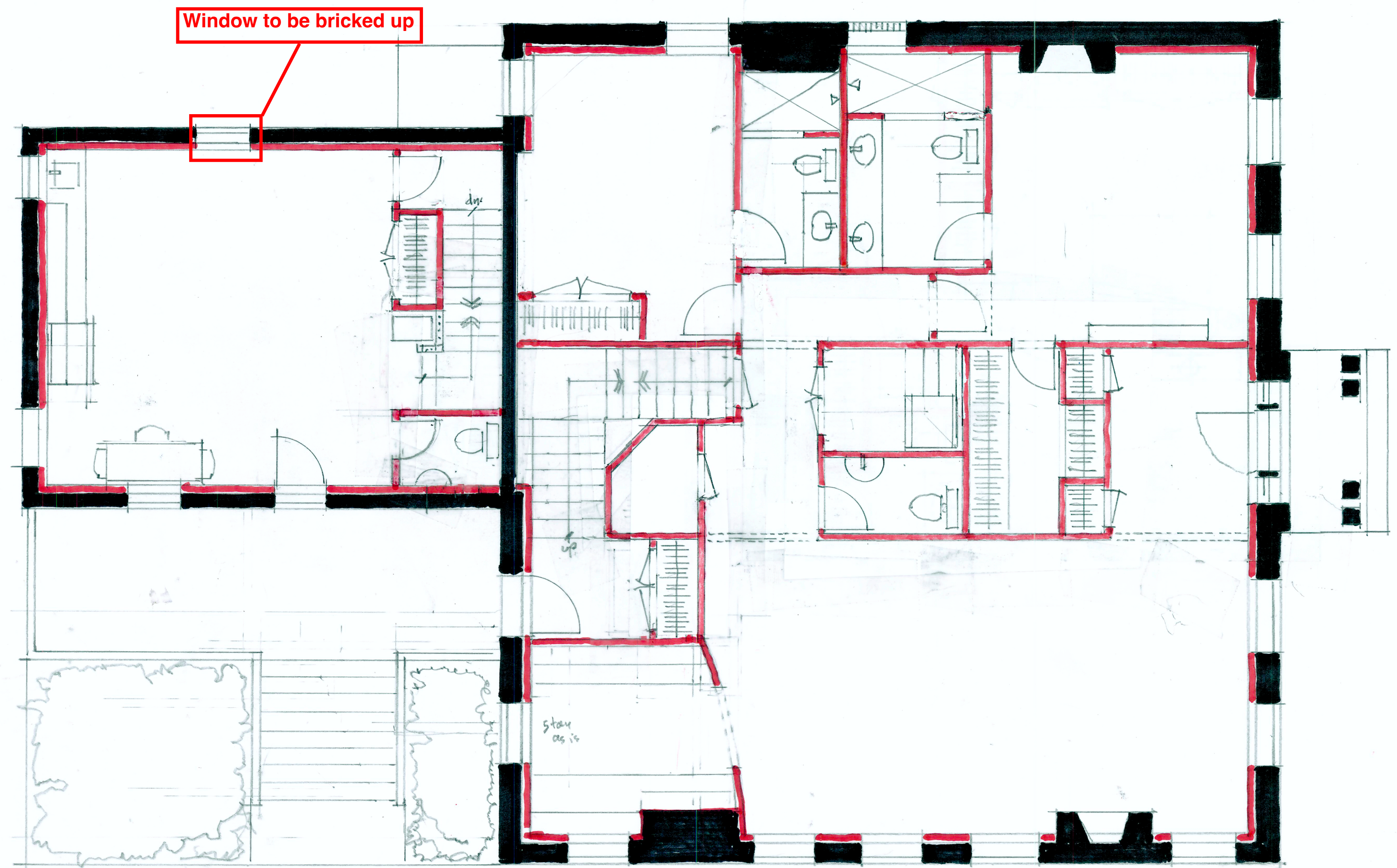
Hope Street façade unchanged other than new windows

# 417 HOPE



253 Main Street, Durham, Ct. 06422  
www.DSMarchitect.com

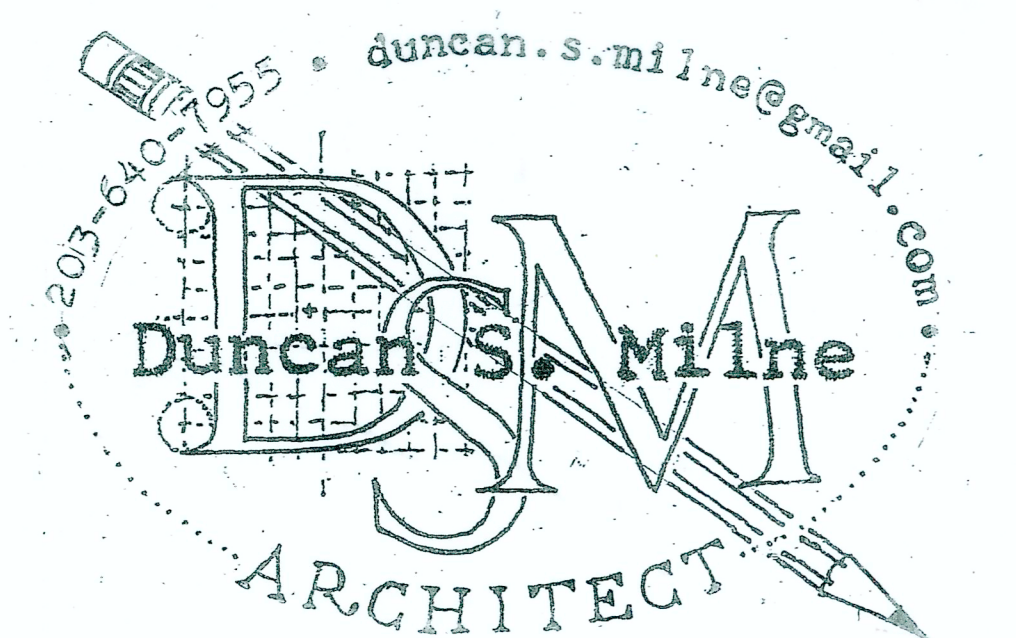




FIRST FLOOR PLAN

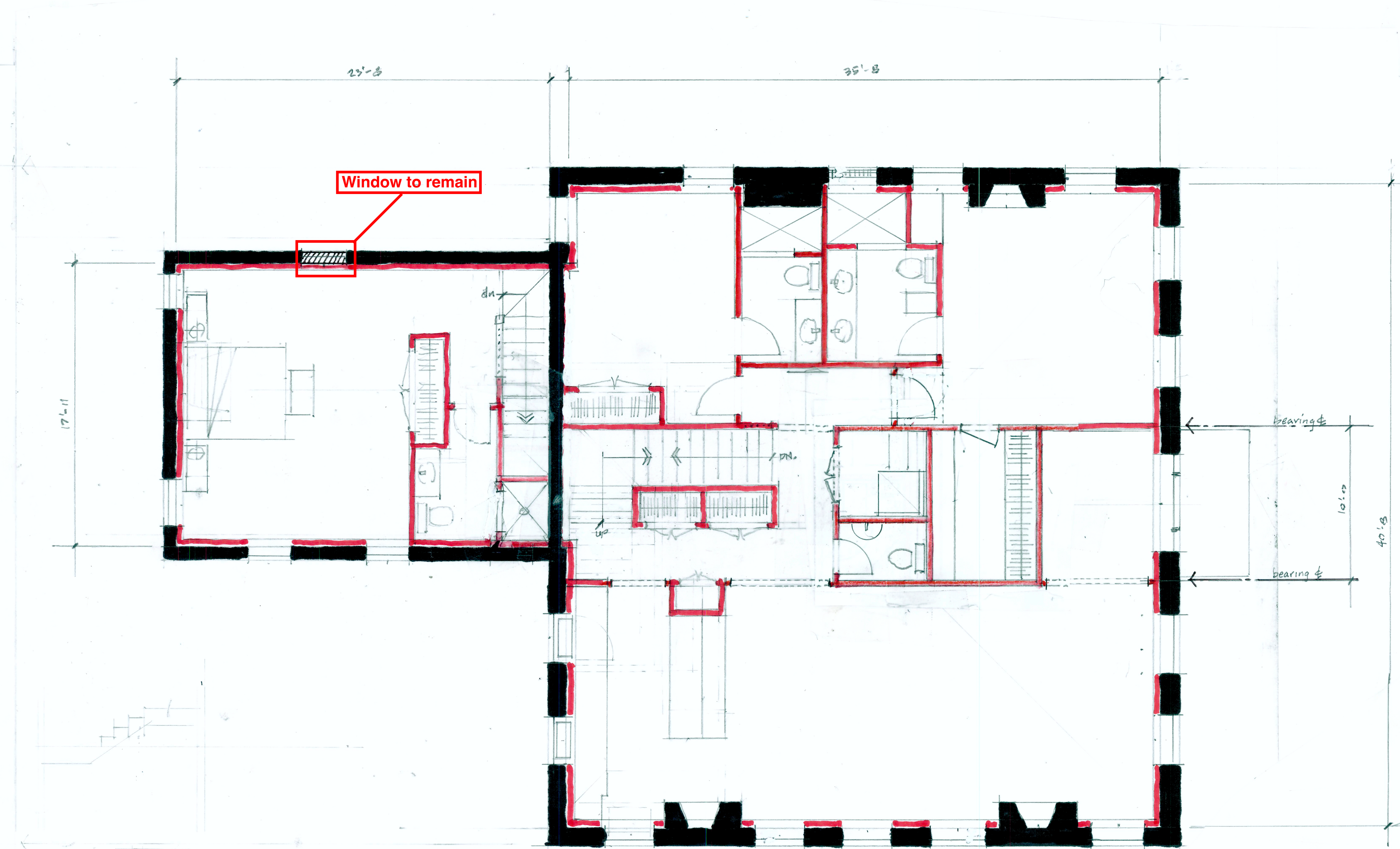
scale: 1/4" = 1'-0"

417 HOPE



253 Main Street, Durham, Ct. 06422  
www.DSMarchitect.com





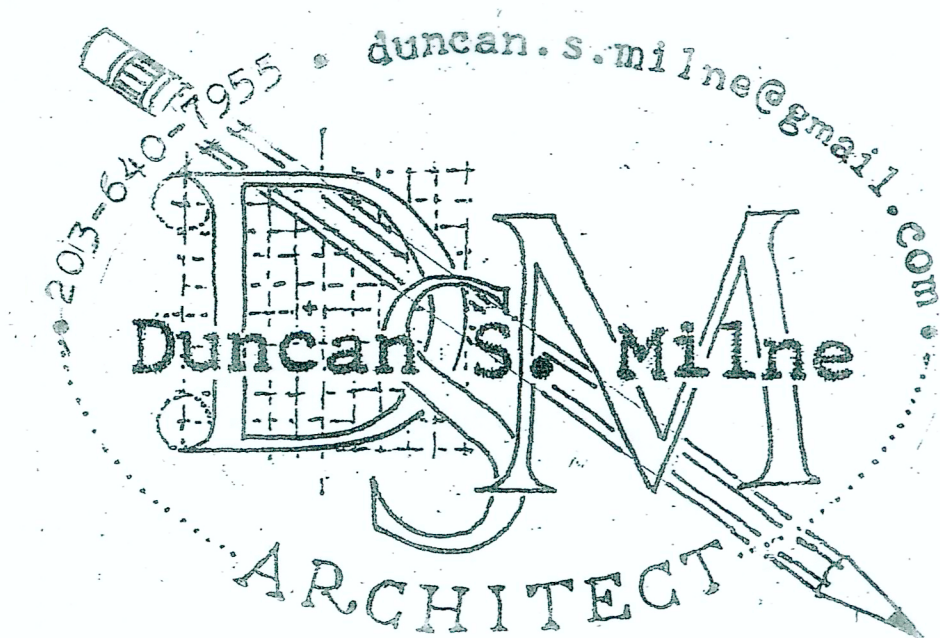
## SECOND FLOOR PLAN

scale: 1/4" = 1'-0"

scale:

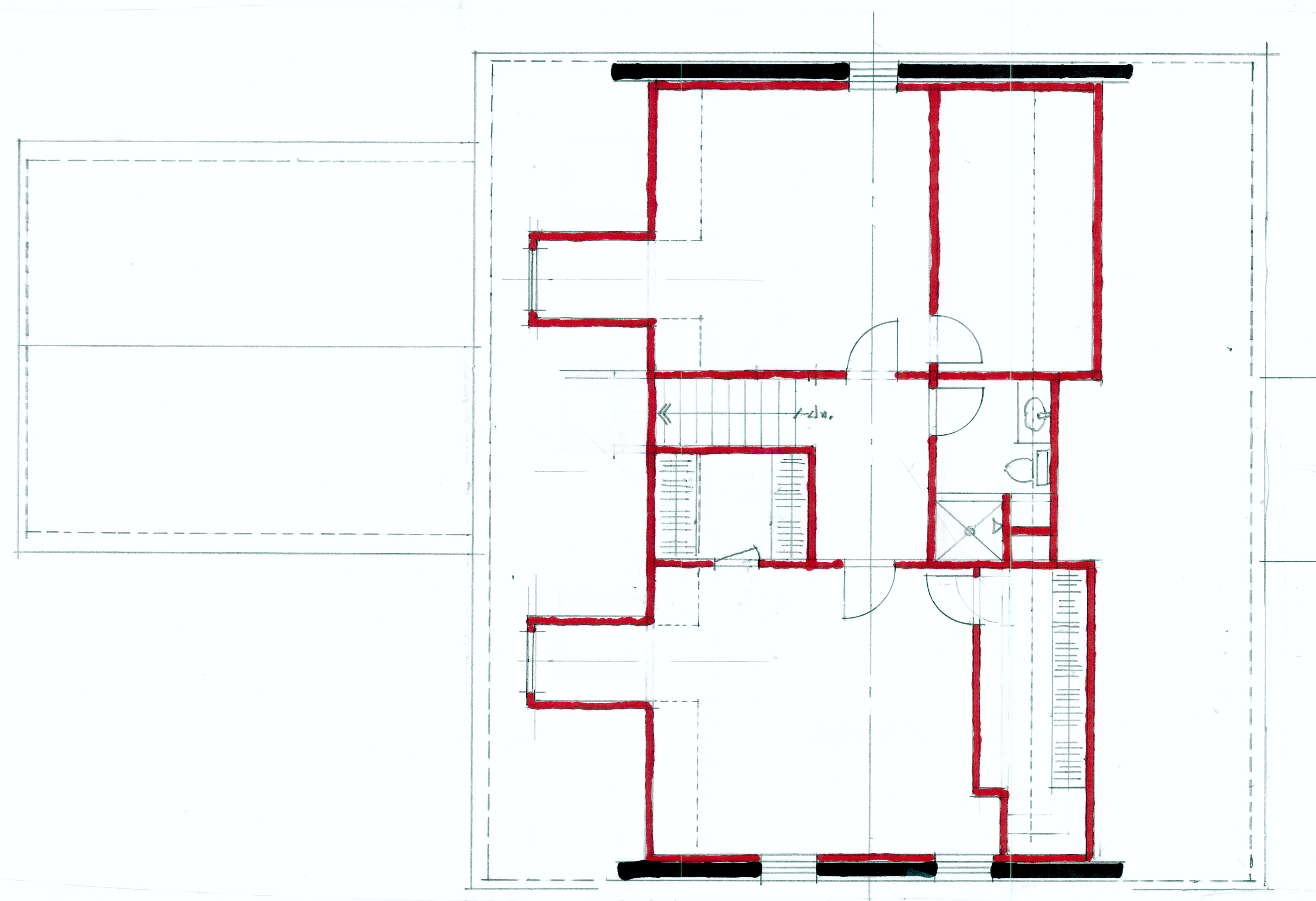
preliminary - pending actual roof and substructure measurements  
and alternate layouts

# 417 HOPE



253 Main Street, Durham, Ct. 06422  
www.DSMarchitect.com

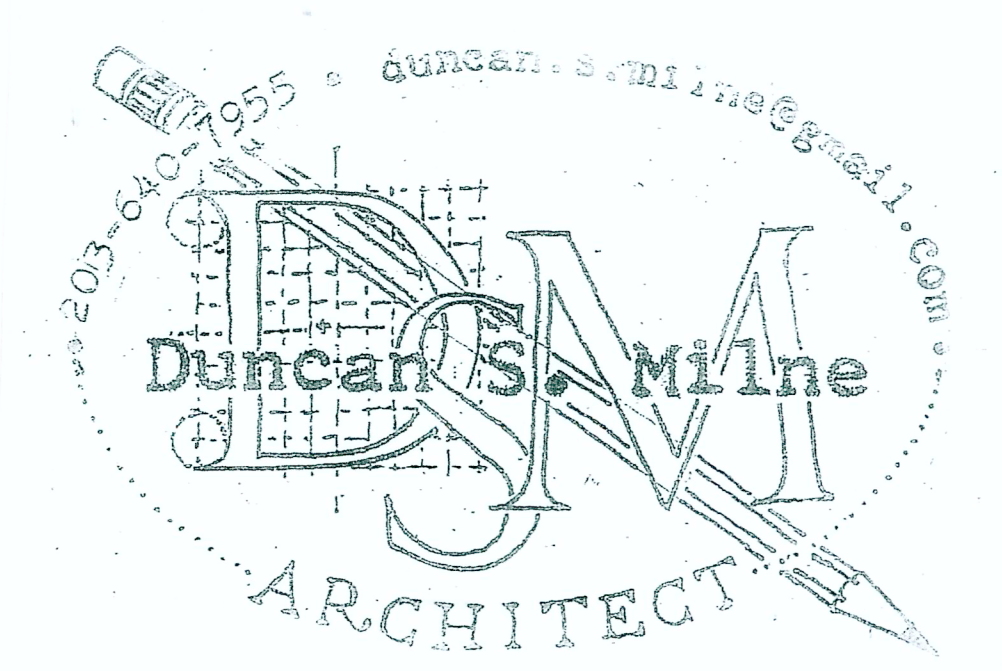




THIRD FLOOR PLAN

scale: 1/4" = 1'-0"

417 HOPE



253 Main Street, Durham, Ct. 06422  
www.DSM-architect.com