

CONTROL POINT ASSOCIATES, INC.

traditional methods | modern approaches

352 Turnpike Road, Suite 320
Southborough, MA 01772
Tel: 508-948-3000
www.cpasurvey.com

FEBRUARY 7, 2024
03-210289-00
PAGE 1 OF 2

SURVEYOR'S METES AND BOUNDS DESCRIPTION

PROPOSED PUBLIC ACCESS EASEMENT
LOCATED ON LOTS 42 & 60, MAP 10
TOWN OF BRISTOL, BRISTOL COUNTY, STATE OF RHODE ISLAND

COMMENCING AT A POINT ON THE NORTHERLY STREET LINE OF CONSTITUTION STREET (PUBLIC, VARIABLE WIDTH) SAID POINT BEING ON THE DIVISION LINE BETWEEN MAP 10, LOT 73 (N/F OF RUSS-RUSS REALTY CO.) AND MAP 10, LOT 63 (N/F OF BRISTOL COUNTY LODGE 1860) THENCE RUNNING ALONG SAID DIVISION LINE AND THE DIVISION LINE BETWEEN MAP 10, LOT 62 (N/F OF RUSS-RUSS REALTY CO.) AND MAP 10, LOT 63 THE FOLLOWING COURSE;

- A. NORTH 15 DEGREES - 24 MINUTES - 13 SECONDS WEST, A DISTANCE OF 82.60 TO A POINT ON THE DIVISION LINE BETWEEN MAP 10, LOT 60 (N/F LANDS OF RUSS-RUSS REALTY CO.) AND MAP 10, LOT 63, THENCE RUNNING ALONG SAID LINE THE FOLLOWING COURSE;
- B. SOUTH 75 DEGREES - 23 MINUTES - 47 SECONDS WEST, A DISTANCE OF 69.97 FEET TO THE POINT AND PLACE OF BEGINNING, THENCE CONTINUING ALONG SAID DIVISION LINE THE FOLLOWING COURSE;
 - 1. SOUTH 75 DEGREES - 23 MINUTES - 47 SECONDS WEST, A DISTANCE OF 10.00 FEET, THENCE RUNNING WITHIN MAP 10, LOT 60 THE FOLLOWING FIVE (5) COURSES;
 - 2. NORTH 14 DEGREES - 36 MINUTES - 20 SECONDS WEST, A DISTANCE OF 38.50 FEET TO A POINT, THENCE;
 - 3. SOUTH 75 DEGREES - 23 MINUTES - 47 SECONDS WEST, A DISTANCE OF 47.89 FEET TO A POINT, THENCE;
 - 4. NORTH 39 DEGREES - 01 MINUTE - 54 SECONDS EAST, A DISTANCE OF 21.35 FEET TO A POINT, THENCE;
 - 5. NORTH 04 DEGREES - 11 MINUTES - 52 SECONDS EAST, A DISTANCE OF 24.66 FEET TO A POINT, THENCE;
 - 6. NORTH 15 DEGREES - 14 MINUTES - 01 SECOND WEST, A DISTANCE OF 91.08 FEET TO A POINT ON THE DIVISION LINE BETWEEN MAP 10, LOT 60 AND MAP 10, LOT 42 (N/F LANDS OF RUSS-RUSS REALTY CO.), THENCE RUNNING WITHIN MAP 10, LOT 42 THE FOLLOWING FIVE (5) COURSES;
 - 7. NORTH 15 DEGREES - 14 MINUTES - 01 SECOND WEST, A DISTANCE OF 32.19 FEET TO A POINT, THENCE;
 - 8. NORTH 44 DEGREES - 10 MINUTES - 47 SECONDS WEST, A DISTANCE OF 38.93 FEET TO A POINT, THENCE;
 - 9. NORTH 19 DEGREES - 37 MINUTES - 55 SECONDS WEST, A DISTANCE OF 63.09 FEET TO A POINT,
 - 10. NORTH 66 DEGREES - 25 MINUTES - 24 SECONDS WEST, A DISTANCE OF 19.86 FEET TO A POINT, THENCE;

Corporate Headquarters
35 Technology Drive, Warren, NJ 07059
Tel: 908.668.0099 Fax: 908.668.9595

Professional Land Surveying, Geospatial and Consulting Services



CONTROL POINT
ASSOCIATES, INC.
traditional methods | modern approaches

11. NORTH 18 DEGREES - 52 MINUTES - 19 SECONDS WEST, A DISTANCE OF 8.31 FEET TO A POINT ON THE DIVISION LINE BETWEEN MAP 10, LOT 42 AND MAP 10, LOT 70 (N/F OF TOWN OF BRISTOL), THENCE RUNNING ALONG SAID LINE THE FOLLOWING COURSE;
12. NORTH 74 DEGREES - 04 MINUTES - 47 SECONDS EAST, A DISTANCE OF 23.10 FEET TO A POINT, THENCE RUNNING WITHIN MAP 10, LOT 42 THE FOLLOWING FOUR (4) COURSES;
13. SOUTH 62 DEGREES - 20 MINUTES - 32 SECONDS EAST, A DISTANCE OF 49.89 FEET TO A POINT, THENCE;
14. SOUTH 15 DEGREES - 14 MINUTES - 01 SECOND EAST, A DISTANCE OF 87.29 FEET TO A POINT, THENCE;
15. SOUTH 74 DEGREES - 45 MINUTES - 59 SECONDS WEST, A DISTANCE OF 2.47 FEET TO A POINT, THENCE;
16. SOUTH 15 DEGREES - 16 MINUTES - 10 SECONDS EAST, A DISTANCE OF 28.88 FEET TO A POINT, ON THE DIVISION LINE BETWEEN MAP 10, LOT 42 AND MAP 10, LOT 60, THENCE RUNNING WITHIN MAP 10, LOT 60 THE FOLLOWING FIVE (5) COURSES;
17. SOUTH 15 DEGREES - 16 MINUTES - 10 SECONDS EAST, A DISTANCE OF 20.85 FEET TO A POINT, THENCE;
18. NORTH 74 DEGREES - 53 MINUTES - 23 SECONDS EAST, A DISTANCE OF 2.47 FEET TO A POINT, THENCE;
19. SOUTH 15 DEGREES - 14 MINUTES - 01 SECOND EAST, A DISTANCE OF 82.37 FEET TO A POINT, THENCE;
20. SOUTH 50 DEGREES - 09 MINUTES - 49 SECONDS EAST, A DISTANCE OF 21.69 FEET TO A POINT, THENCE;
21. SOUTH 14 DEGREES - 36 MINUTES - 20 SECONDS EAST, A DISTANCE OF 45.00 FEET TO THE POINT AND PLACE OF BEGINNING.

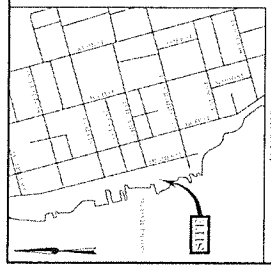
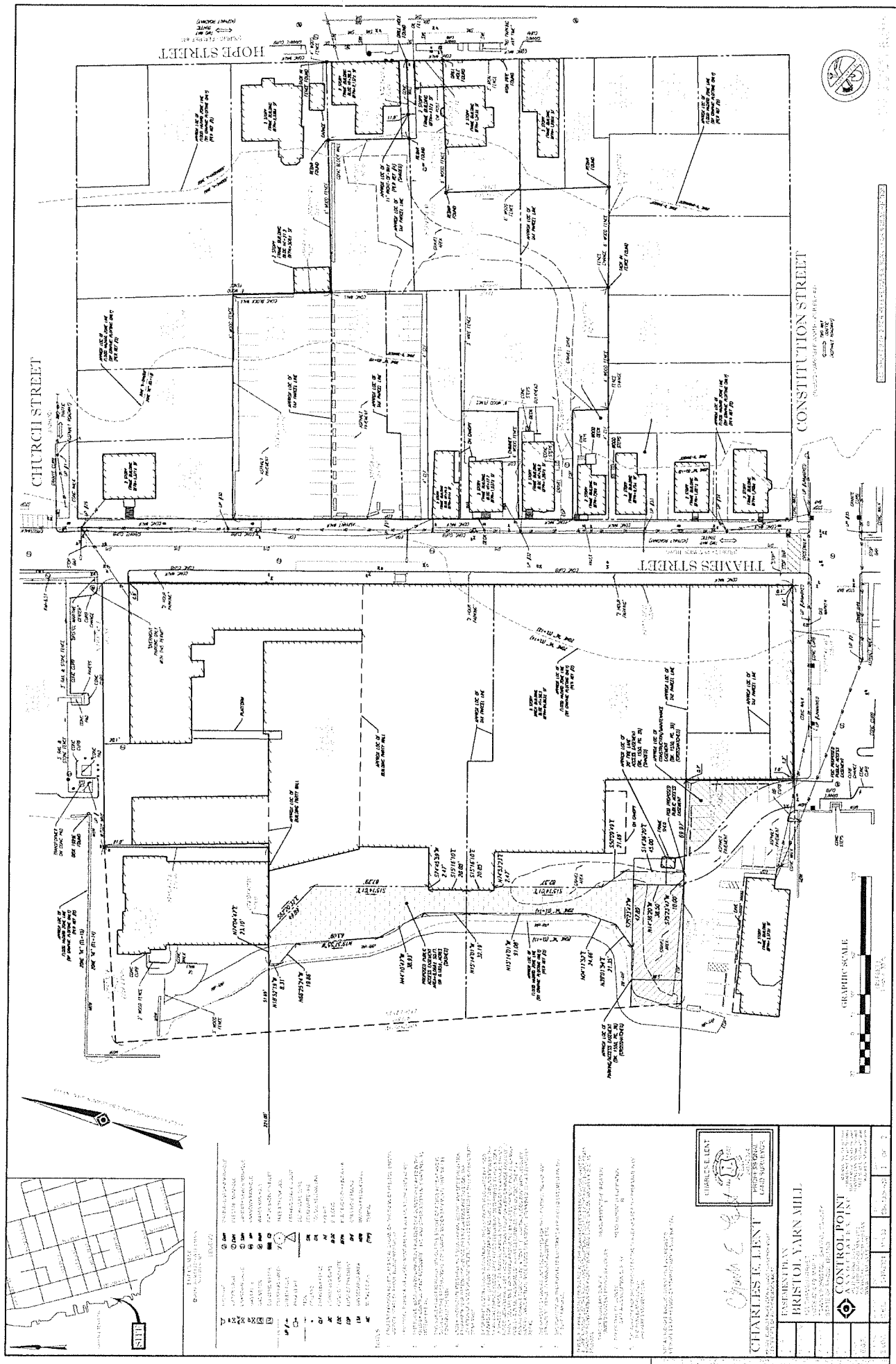
CONTAINING 8,068 SQUARE FEET, 0.185 ACRES

CONTROL POINT ASSOCIATES

Charles E. Lent

CHARLES E. LENT
STATE OF RHODE ISLAND
PROFESSIONAL LAND SURVEYOR #1947





- LEGEND
- 1. SITE BOUNDARY
 - 2. EXISTING BUILDING
 - 3. PROPOSED BUILDING
 - 4. DRIVEWAY
 - 5. PARKING SPACE
 - 6. FENCE
 - 7. GROUND LEVEL
 - 8. PROPOSED LEVEL
 - 9. ELEVATION
 - 10. DISTANCE
 - 11. AREA
 - 12. VOLUME
 - 13. WEIGHT
 - 14. DENSITY
 - 15. PERCENTAGE
 - 16. RATIO
 - 17. FRACTION
 - 18. DECIMAL
 - 19. PERCENT
 - 20. PER MIL
 - 21. PER THOUSAND
 - 22. PER MILLION
 - 23. PER BILLION
 - 24. PER TRILLION
 - 25. PER QUADRILLION
 - 26. PER SEPTILLION
 - 27. PER OCTILLION
 - 28. PER NONILLION
 - 29. PER DECILLION
 - 30. PER UNDECILLION
 - 31. PER DUODECILLION
 - 32. PER TREDECILLION
 - 33. PER QUADRDECILLION
 - 34. PER QUINTDECILLION
 - 35. PER SEXDECILLION
 - 36. PER SEPTDECILLION
 - 37. PER OCTDECILLION
 - 38. PER NONDECILLION
 - 39. PER UNDECILLION
 - 40. PER DUODECILLION
 - 41. PER TREDECILLION
 - 42. PER QUADRDECILLION
 - 43. PER QUINTDECILLION
 - 44. PER SEXDECILLION
 - 45. PER SEPTDECILLION
 - 46. PER OCTDECILLION
 - 47. PER NONDECILLION
 - 48. PER UNDECILLION
 - 49. PER DUODECILLION
 - 50. PER TREDECILLION
 - 51. PER QUADRDECILLION
 - 52. PER QUINTDECILLION
 - 53. PER SEXDECILLION
 - 54. PER SEPTDECILLION
 - 55. PER OCTDECILLION
 - 56. PER NONDECILLION
 - 57. PER UNDECILLION
 - 58. PER DUODECILLION
 - 59. PER TREDECILLION
 - 60. PER QUADRDECILLION
 - 61. PER QUINTDECILLION
 - 62. PER SEXDECILLION
 - 63. PER SEPTDECILLION
 - 64. PER OCTDECILLION
 - 65. PER NONDECILLION
 - 66. PER UNDECILLION
 - 67. PER DUODECILLION
 - 68. PER TREDECILLION
 - 69. PER QUADRDECILLION
 - 70. PER QUINTDECILLION
 - 71. PER SEXDECILLION
 - 72. PER SEPTDECILLION
 - 73. PER OCTDECILLION
 - 74. PER NONDECILLION
 - 75. PER UNDECILLION
 - 76. PER DUODECILLION
 - 77. PER TREDECILLION
 - 78. PER QUADRDECILLION
 - 79. PER QUINTDECILLION
 - 80. PER SEXDECILLION
 - 81. PER SEPTDECILLION
 - 82. PER OCTDECILLION
 - 83. PER NONDECILLION
 - 84. PER UNDECILLION
 - 85. PER DUODECILLION
 - 86. PER TREDECILLION
 - 87. PER QUADRDECILLION
 - 88. PER QUINTDECILLION
 - 89. PER SEXDECILLION
 - 90. PER SEPTDECILLION
 - 91. PER OCTDECILLION
 - 92. PER NONDECILLION
 - 93. PER UNDECILLION
 - 94. PER DUODECILLION
 - 95. PER TREDECILLION
 - 96. PER QUADRDECILLION
 - 97. PER QUINTDECILLION
 - 98. PER SEXDECILLION
 - 99. PER SEPTDECILLION
 - 100. PER OCTDECILLION
 - 101. PER NONDECILLION
 - 102. PER UNDECILLION
 - 103. PER DUODECILLION
 - 104. PER TREDECILLION
 - 105. PER QUADRDECILLION
 - 106. PER QUINTDECILLION
 - 107. PER SEXDECILLION
 - 108. PER SEPTDECILLION
 - 109. PER OCTDECILLION
 - 110. PER NONDECILLION
 - 111. PER UNDECILLION
 - 112. PER DUODECILLION
 - 113. PER TREDECILLION
 - 114. PER QUADRDECILLION
 - 115. PER QUINTDECILLION
 - 116. PER SEXDECILLION
 - 117. PER SEPTDECILLION
 - 118. PER OCTDECILLION
 - 119. PER NONDECILLION
 - 120. PER UNDECILLION
 - 121. PER DUODECILLION
 - 122. PER TREDECILLION
 - 123. PER QUADRDECILLION
 - 124. PER QUINTDECILLION
 - 125. PER SEXDECILLION
 - 126. PER SEPTDECILLION
 - 127. PER OCTDECILLION
 - 128. PER NONDECILLION
 - 129. PER UNDECILLION
 - 130. PER DUODECILLION
 - 131. PER TREDECILLION
 - 132. PER QUADRDECILLION
 - 133. PER QUINTDECILLION
 - 134. PER SEXDECILLION
 - 135. PER SEPTDECILLION
 - 136. PER OCTDECILLION
 - 137. PER NONDECILLION
 - 138. PER UNDECILLION
 - 139. PER DUODECILLION
 - 140. PER TREDECILLION
 - 141. PER QUADRDECILLION
 - 142. PER QUINTDECILLION
 - 143. PER SEXDECILLION
 - 144. PER SEPTDECILLION
 - 145. PER OCTDECILLION
 - 146. PER NONDECILLION
 - 147. PER UNDECILLION
 - 148. PER DUODECILLION
 - 149. PER TREDECILLION
 - 150. PER QUADRDECILLION
 - 151. PER QUINTDECILLION
 - 152. PER SEXDECILLION
 - 153. PER SEPTDECILLION
 - 154. PER OCTDECILLION
 - 155. PER NONDECILLION
 - 156. PER UNDECILLION
 - 157. PER DUODECILLION
 - 158. PER TREDECILLION
 - 159. PER QUADRDECILLION
 - 160. PER QUINTDECILLION
 - 161. PER SEXDECILLION
 - 162. PER SEPTDECILLION
 - 163. PER OCTDECILLION
 - 164. PER NONDECILLION
 - 165. PER UNDECILLION
 - 166. PER DUODECILLION
 - 167. PER TREDECILLION
 - 168. PER QUADRDECILLION
 - 169. PER QUINTDECILLION
 - 170. PER SEXDECILLION
 - 171. PER SEPTDECILLION
 - 172. PER OCTDECILLION
 - 173. PER NONDECILLION
 - 174. PER UNDECILLION
 - 175. PER DUODECILLION
 - 176. PER TREDECILLION
 - 177. PER QUADRDECILLION
 - 178. PER QUINTDECILLION
 - 179. PER SEXDECILLION
 - 180. PER SEPTDECILLION
 - 181. PER OCTDECILLION
 - 182. PER NONDECILLION
 - 183. PER UNDECILLION
 - 184. PER DUODECILLION
 - 185. PER TREDECILLION
 - 186. PER QUADRDECILLION
 - 187. PER QUINTDECILLION
 - 188. PER SEXDECILLION
 - 189. PER SEPTDECILLION
 - 190. PER OCTDECILLION
 - 191. PER NONDECILLION
 - 192. PER UNDECILLION
 - 193. PER DUODECILLION
 - 194. PER TREDECILLION
 - 195. PER QUADRDECILLION
 - 196. PER QUINTDECILLION
 - 197. PER SEXDECILLION
 - 198. PER SEPTDECILLION
 - 199. PER OCTDECILLION
 - 200. PER NONDECILLION
 - 201. PER UNDECILLION
 - 202. PER DUODECILLION
 - 203. PER TREDECILLION
 - 204. PER QUADRDECILLION
 - 205. PER QUINTDECILLION
 - 206. PER SEXDECILLION
 - 207. PER SEPTDECILLION
 - 208. PER OCTDECILLION
 - 209. PER NONDECILLION
 - 210. PER UNDECILLION
 - 211. PER DUODECILLION
 - 212. PER TREDECILLION
 - 213. PER QUADRDECILLION
 - 214. PER QUINTDECILLION
 - 215. PER SEXDECILLION
 - 216. PER SEPTDECILLION
 - 217. PER OCTDECILLION
 - 218. PER NONDECILLION
 - 219. PER UNDECILLION
 - 220. PER DUODECILLION
 - 221. PER TREDECILLION
 - 222. PER QUADRDECILLION
 - 223. PER QUINTDECILLION
 - 224. PER SEXDECILLION
 - 225. PER SEPTDECILLION
 - 226. PER OCTDECILLION
 - 227. PER NONDECILLION
 - 228. PER UNDECILLION
 - 229. PER DUODECILLION
 - 230. PER TREDECILLION
 - 231. PER QUADRDECILLION
 - 232. PER QUINTDECILLION
 - 233. PER SEXDECILLION
 - 234. PER SEPTDECILLION
 - 235. PER OCTDECILLION
 - 236. PER NONDECILLION
 - 237. PER UNDECILLION
 - 238. PER DUODECILLION
 - 239. PER TREDECILLION
 - 240. PER QUADRDECILLION
 - 241. PER QUINTDECILLION
 - 242. PER SEXDECILLION
 - 243. PER SEPTDECILLION
 - 244. PER OCTDECILLION
 - 245. PER NONDECILLION
 - 246. PER UNDECILLION
 - 247. PER DUODECILLION
 - 248. PER TREDECILLION
 - 249. PER QUADRDECILLION
 - 250. PER QUINTDECILLION
 - 251. PER SEXDECILLION
 - 252. PER SEPTDECILLION
 - 253. PER OCTDECILLION
 - 254. PER NONDECILLION
 - 255. PER UNDECILLION
 - 256. PER DUODECILLION
 - 257. PER TREDECILLION
 - 258. PER QUADRDECILLION
 - 259. PER QUINTDECILLION
 - 260. PER SEXDECILLION
 - 261. PER SEPTDECILLION
 - 262. PER OCTDECILLION
 - 263. PER NONDECILLION
 - 264. PER UNDECILLION
 - 265. PER DUODECILLION
 - 266. PER TREDECILLION
 - 267. PER QUADRDECILLION
 - 268. PER QUINTDECILLION
 - 269. PER SEXDECILLION
 - 270. PER SEPTDECILLION
 - 271. PER OCTDECILLION
 - 272. PER NONDECILLION
 - 273. PER UNDECILLION
 - 274. PER DUODECILLION
 - 275. PER TREDECILLION
 - 276. PER QUADRDECILLION
 - 277. PER QUINTDECILLION
 - 278. PER SEXDECILLION
 - 279. PER SEPTDECILLION
 - 280. PER OCTDECILLION
 - 281. PER NONDECILLION
 - 282. PER UNDECILLION
 - 283. PER DUODECILLION
 - 284. PER TREDECILLION
 - 285. PER QUADRDECILLION
 - 286. PER QUINTDECILLION
 - 287. PER SEXDECILLION
 - 288. PER SEPTDECILLION
 - 289. PER OCTDECILLION
 - 290. PER NONDECILLION
 - 291. PER UNDECILLION
 - 292. PER DUODECILLION
 - 293. PER TREDECILLION
 - 294. PER QUADRDECILLION
 - 295. PER QUINTDECILLION
 - 296. PER SEXDECILLION
 - 297. PER SEPTDECILLION
 - 298. PER OCTDECILLION
 - 299. PER NONDECILLION
 - 300. PER UNDECILLION

CHARLES E. LENT
BRISTOL YARN MILL
100 YEARS OF SERVICE
1880-1980

CONTROL POINT ASSOCIATES INC.
100 YEARS OF SERVICE
1880-1980

100 YEARS OF SERVICE
1880-1980

[illegible]

CHARLES L. LENT

1902

PROFESSIONAL LAND SURVEYOR

1902

1903

1904

1905

1906

1907

1908

1909

1910

1911

1912

1913

1914

1915

1916

1917

1918

1919

1920

1921

1922

1923

1924

1925

1926

1927

1928

1929

1930

1931

1932

1933

1934

1935

1936

1937

1938

1939

1940

1941

1942

1943

1944

1945

1946

1947

1948

1949

1950

1951

1952

1953

1954

1955

1956

1957

1958

1959

1960

1961

1962

1963

1964

1965

1966

1967

1968

1969

1970

1971

1972

1973

1974

1975

1976

1977

1978

1979

1980

1981

1982

1983

1984

1985

1986

1987

1988

1989

1990

1991

1992

1993

1994

1995

1996

1997

1998

1999

2000

2001

2002

2003

2004

2005

2006

2007

2008

2009

2010

2011

2012

2013

2014

2015

2016

2017

2018

2019

2020

2021

2022

2023

2024

2025

2026

2027

2028

2029

2030

2031

2032

2033

2034

2035

2036

2037

2038

2039

2040

2041

2042

2043

2044

2045

2046

2047

2048

2049

2050

2051

2052

2053

2054

2055

2056

2057

2058

2059

2060

2061

2062

2063

2064

2065

2066

2067

2068

2069

2070

2071

2072

2073

2074

2075

2076

2077

2078

2079

2080

2081

2082

2083

2084

2085

2086

2087

2088

2089

2090

2091

2092

2093

2094

2095

2096

2097

2098

2099

2100

2101

2102

2103

2104

2105

2106

2107

2108

2109

2110

2111

2112

2113

2114

2115

2116

2117

2118

2119

2120

2121

2122

2123

2124

2125

2126

2127

2128

2129

2130

2131

2132

2133

2134

2135

2136

2137

2138

2139

2140

2141

2142

2143

2144

2145

2146

2147

2148

2149

2150

2151

2152

2153

2154

2155

2156

2157

2158

2159

2160

2161

2162

2163

2164

2165

2166

2167

2168

2169

2170

2171

2172

2173

2174

2175

2176

2177

2178

2179

2180

2181

2182

2183

2184

2185

2186

2187

2188

2189

2190

2191

2192

2193

2194

2195

2196

2197

2198

2199

2200

2201

2202

2203

2204

2205

2206

2207

2208

2209

2210

2211

2212

2213

2214

2215

2216

2217

2218

2219

2220

2221

2222

2223

2224

2225

2226

2227

2228

2229

2230

2231

2232

2233

2234

2235

2236

2237

2238

2239

2240

2241

2242

2243

2244

2245

2246

2247

2248

2249

2250

2251

2252

2253

2254

2255

2256

2257

2258

2259

2260

2261

2262

2263

2264

2265

2266

2267

2268

2269

2270

2271

2272

2273

2274

2275

2276

2277

2278

2279

2280

2281

2282

2283

2284

2285

2286

2287

2288

2289

2290

2291

2292

2293

2294

2295

2296

2297

2298

2299

2300

2301

2302

2303

2304

2305

2306

2307

2308

2309

2310

2311

2312

2313

2314

2315

2316

2317

2318

2319

2320

2321

2322

2323

2324

2325

2326

2327

2328

2329

2330

2331

2332

2333

2334

2335

2336

2337

2338

2339

2340

2341

2342

2343

2344

2345

2346

2347

2348

2349

2350

2351

2352

2
