



# Bristol Police Department

395 METACOM AVENUE BRISTOL, RHODE ISLAND 02809  
TELEPHONE (401) 253-6900



KEVIN M. LYNCH  
Chief of Police

## BRISTOL POLICE DEPARTMENT PETITION REVIEW FORM

DATE FILED: 07-03-2025

### PETITION DESCRIPTION:

Howard Sutton, President, Stone Harbour Condominium Association, 345 Thames Street, requests an extension of the current no parking area on the South entrance by 6 feet on each side of the egress and a no parking buffer zone at the north entrance on Thames Street.

PERSON/S FILING PETITION: Haward Sutton

☐ LICENSE RENEWAL      ☒ NEW PETITION

### REVIEW:

- ☒ APPROVED
- ☐ CONDITIONAL APPROVAL
- ☐ DENIED
- ☐ FORWARD TO ANOTHER DEPARTMENT FOR REVIEW

### NOTES:

Please see attached.

REVIEWING OFFICER: Capt. Roman Wozny

DATE COMPLETED: 7-16-25

2025 JUL 16 PM 3:08  
TOWN CLERK'S OFFICE  
BRISTOL, RHODE ISLAND



# Bristol Police Department

395 METACOM AVENUE BRISTOL, RHODE ISLAND 02809  
TELEPHONE (401) 253-6900



KEVIN M. LYNCH  
Chief of Police

## PETITION REVIEW-343 & 345 Thames Street no parking request:

At the request of Howard Sutton, President of Stone Harbor Condominium Association, we conducted a review of the current no parking markings and vehicular egress sightlines from the parking garage at 343 Thames Street and 345 Thames Street. Mr. Sutton Expressed concerns regarding visibility when exiting the garage onto Thames Street at 343 Thames Street and exiting the parking lot at 345.

Director Parella and I responded to the location to review this request and found the following measurements:

### Measurements at 343 Thames Street:

- Width of Thames Street in the area of 343 Thames Street 29 feet
- Driveway width at straightaway (garage exit) (measurement taken at straightaway) 21 feet
- Driveway width at apron/street edge (widest point) 34 feet
- Distance from driveway straight edge to end of existing no parking area (north side) 18 feet
- Distance from driveway straight edge to end of existing no parking area (south side) 23 feet
- Distance from driveway apron (at roadway curve) to end of no parking area
  - North side: 15 feet
  - South side: 14 feet

### Measurements at 345 Thames Street:

- Width of Thames Street in the area of 345 Thames Street 30 feet
- Driveway width at straightaway 24 feet
- Driveway width at apron/street edge (widest point) 47 feet

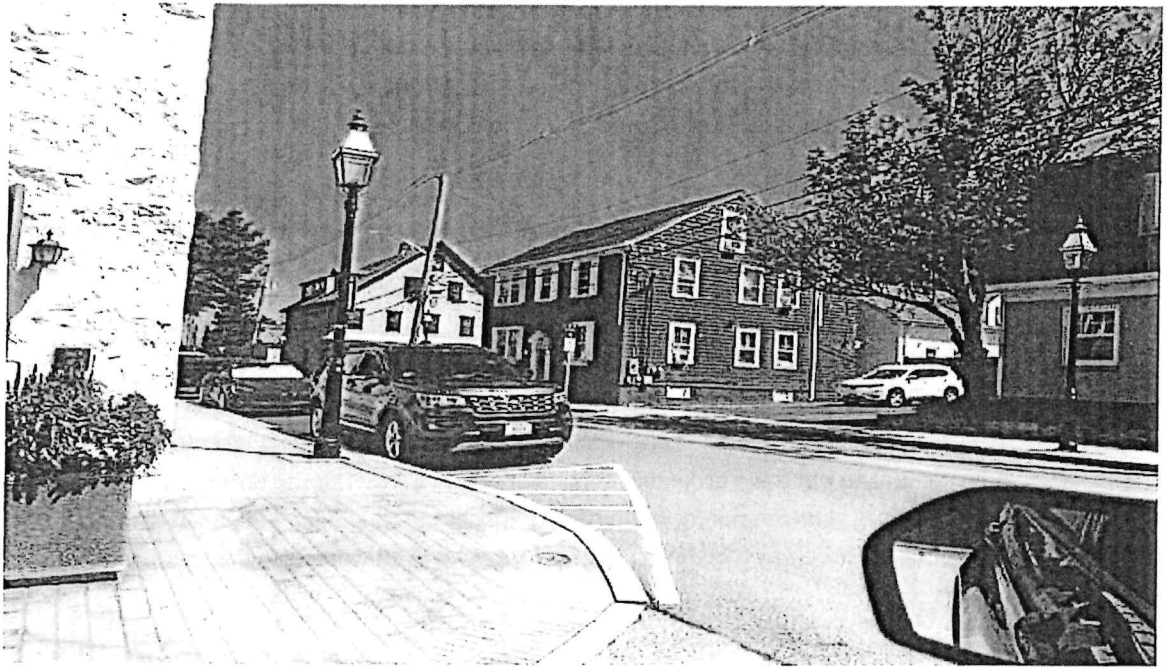
It should be noted that both sides of the driveways at 343 and 345 Thames feature curved curbing, which naturally increases the setback of the legal parking spaces from the driveway. These curves improve the line of sight for motorists exiting the garage or parking lot.

At 343 Thames Street, measured from the driveway straightaway to the end of the marked no parking area (north side 18', south side 23'). Measured from the driveway apron where it meets the roadway at the curve, the north side measures 15' and the south side measures 14'. I also noted that these current parking restrictions are not active in our town's ordinance and no signs are posted.

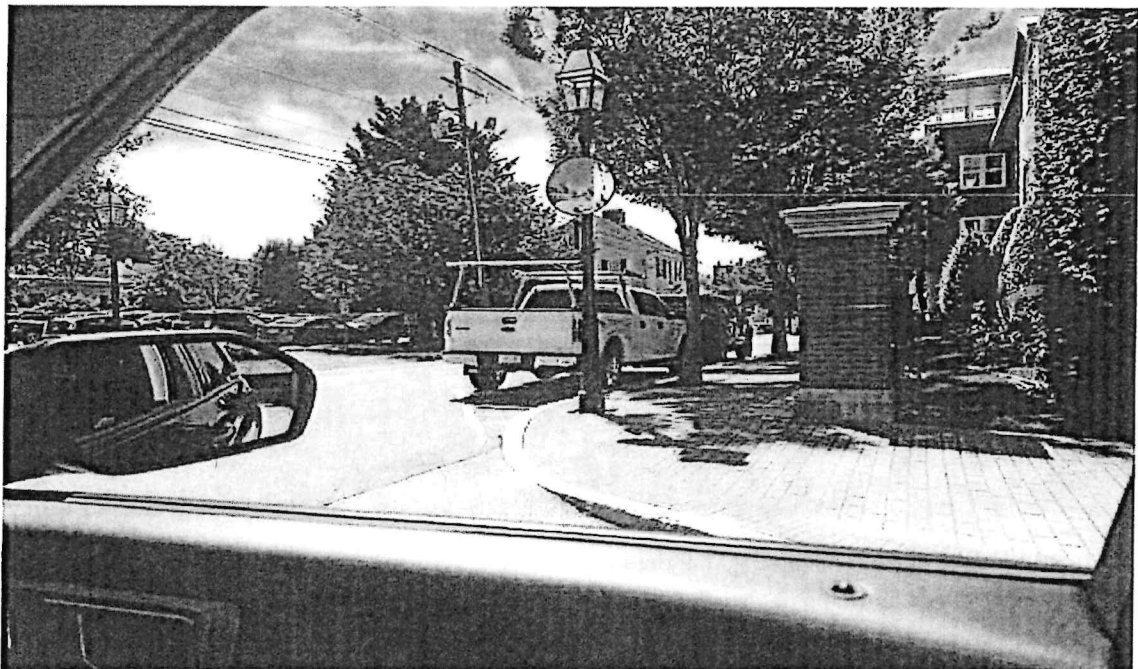
A review of department CAD data for the past three years revealed no reported motor vehicle accidents or parking complaints/violations associated with either 343 or 345 Thames Street.

An aerial photograph of a residential street. A house with the number 322 is visible on the right side of the street. The house is a two-story structure with a dark roof. To the left of the house is a parking lot with several cars parked. The street is paved and has a white line marking. There are trees and bushes along the street. The image is in black and white.

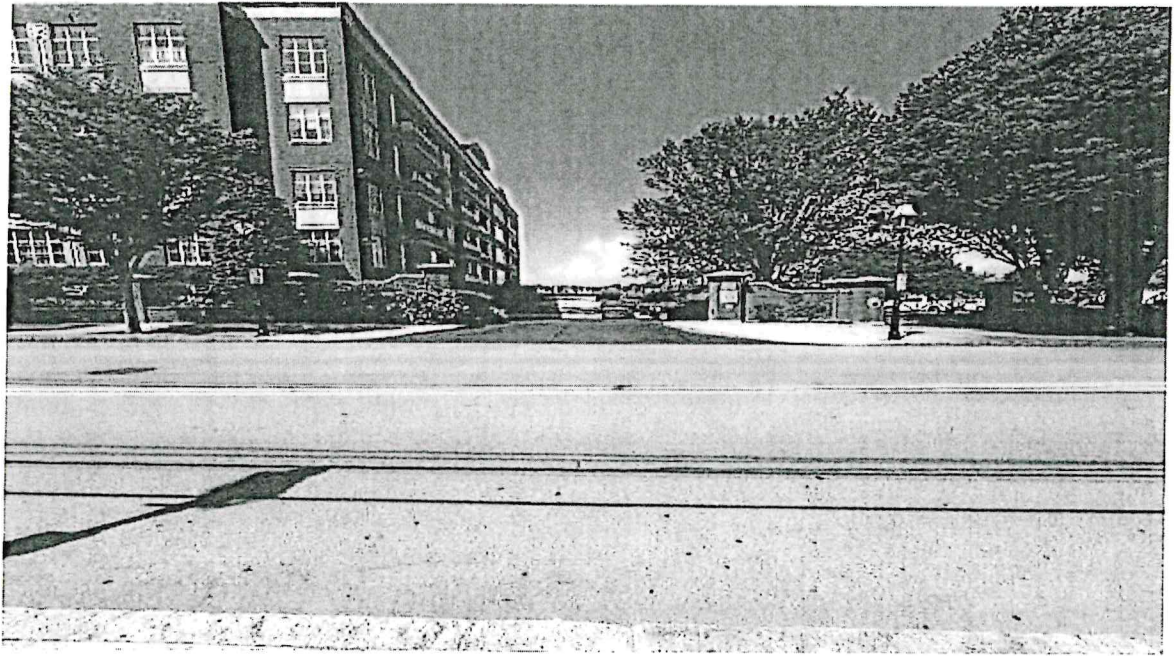
2



343 Thames Street- North sightlines with current no parking restrictions



343 Thames Street- South sightlines with current no parking restrictions



345 Thames Street- north side of driveway is already posted no parking. We recommend creating a 15' no parking area extending from the driveway's widest point southbound for 15'

STEVEN CONTENTE  
Town Administrator

*Concur*  
*URS*

Respectfully Submitted,

*Capt. Roman Wozny*

Captain Roman Wozny