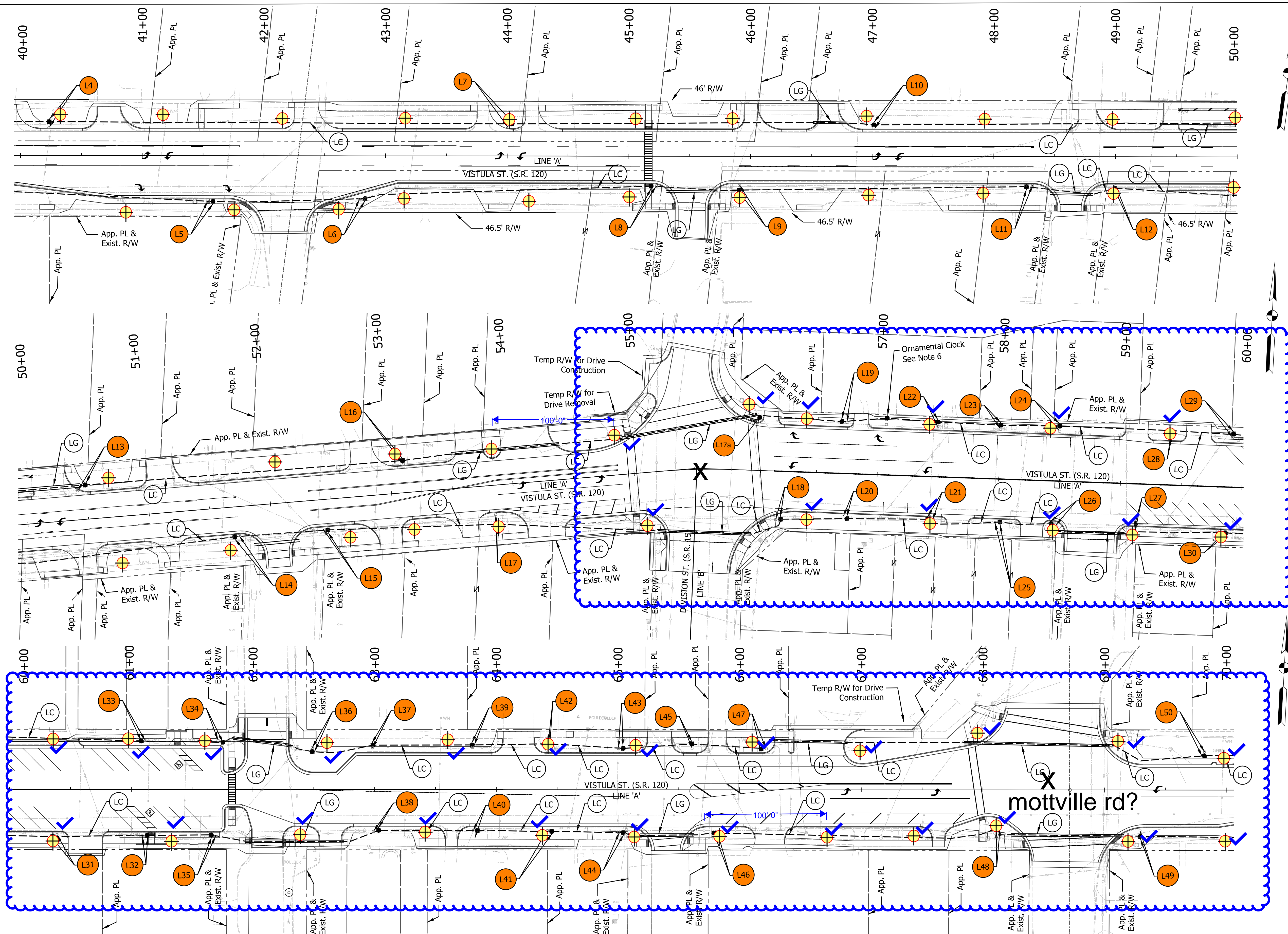


X:\Projects\2020\20666\217990_INDOT SR120SR15 Pavement Replacement\01_ConstrDocs\CAD\DWG\07.1_Lighting\SH_T_Lighting_40_02.dwg



66 poles

36 poles and luminaires in highlighted area

Legend

- LC 4 1/4 No. 4 Copper Wire In Plastic Duct
- LG 4 1/4 No. 4 Copper Wire In Plastic Duct In 2" Galvanized Steel Conduit Sleeve
- LP Protect Decorative Lighting
- L# Relocate Decorative Lighting (Unit Number)
- Relocated Light Pole on New Foundation

NOTES

1. The Latest Indiana Department of Transportation Standard Specifications And Current Supplements Thereto to be Used With These Plans, Unless Otherwise Noted In Project Plans or Specifications.
2. All Work Shall Be In Conformance With the National Electrical Code, Latest Edition Adopted By Indiana, The Electrical Code Amendments, National Safety Code, Local/Municipal Codes, and the Authority Having Jurisdiction.
3. Contractor Shall Exercise Caution When Working Near Overhead Power Lines. All Applicable NESC and OSHA Regulations Shall Be Followed.
4. All Conduit Crossing Pavement Shall Extend 5' Beyond Curb or Edge of Pavement.
5. Proposed Wiring On Plans Is Diagrammatic Only. Refer to Unique Special Provision.
6. Ornamental Clock to be Removed and Reset on New Foundation. Replace Power Feed Cable in Like Kind.



NOT FOR CONSTRUCTION
DLZ INDIANA, LLC

RECOMMENDED FOR APPROVAL	DESIGN ENGINEER	DATE
DESIGNED: DMS	3/2024	DRAWN: JMF
3/2024		3/2024
CHECKED: RAC	3/2024	CHECKED: RAC
		3/2024

INDIANA DEPARTMENT OF TRANSPORTATION
LIGHTING PLAN

SCALE	ROAD FILE
Horizontal Scale: 1"=40'	
Vertical Scale: N/A	DESIGNATION
	1902645 & 1902646
SURVEY BOOK	SHEETS
ELECTRONIC	84 of 153
CONTRACT	PROJECT
R-46529	1902645 & 1902646