



| SINCE 1993



| VALUE
INNOVATION
COMMUNICATION
EXPERIENCE



USSIGNCRAFTERS.COM
INFO@USSIGNCRAFTERS.COM



800.659.6319
574.674.5055



216 LINCOLNWAY EAST
OSCEOLA, IN 46561



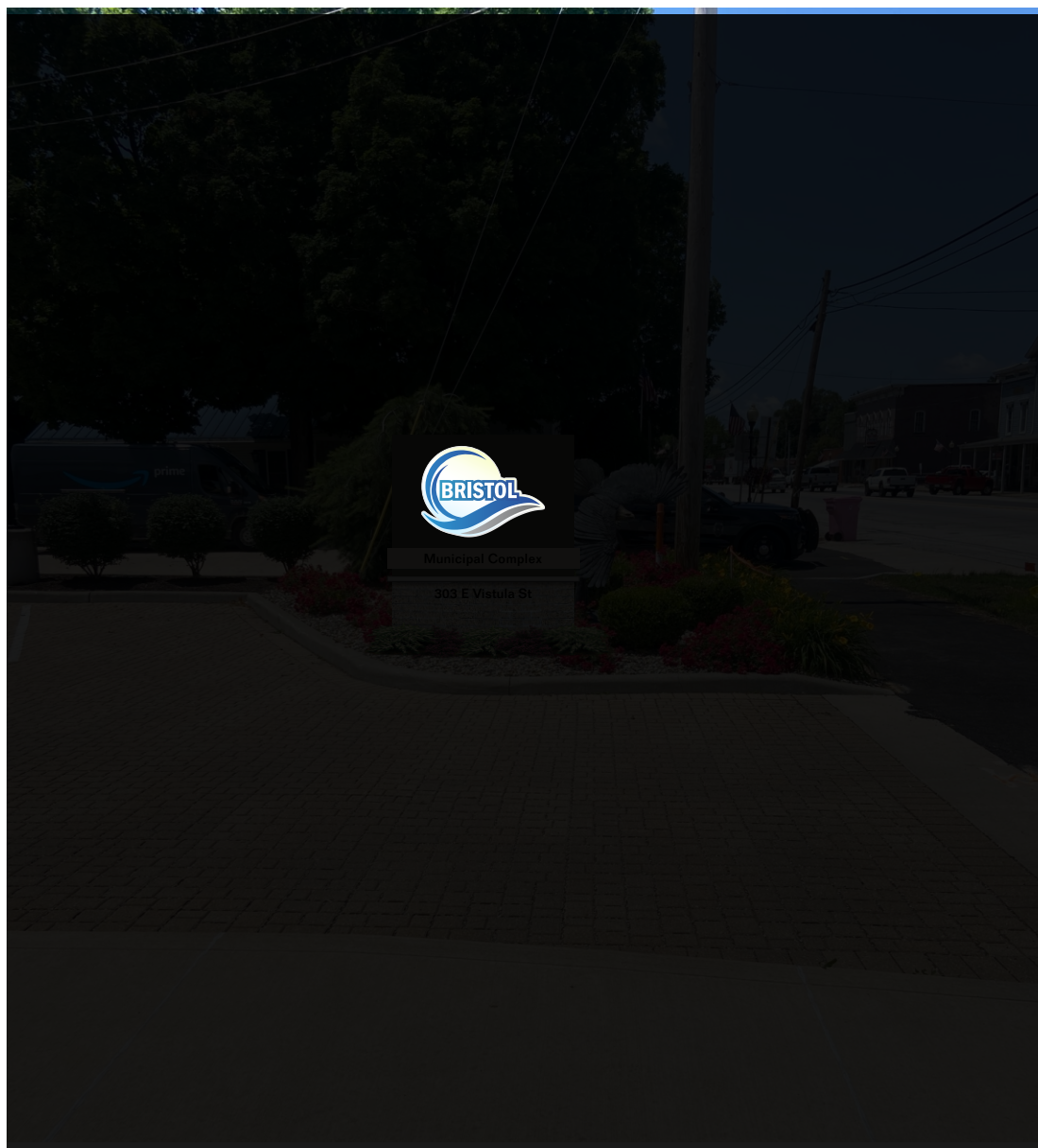
Eagle to be relocated to landscaping area in front of Municipal Complex Building



Proposed

One (1) double sided illuminated monument sign. Painted 56" high x 72" wide x 12" deep cabinet routed with push thru logo. 8" high painted aluminum band with 4" high x 1/4" thick black acrylic letters "Municipal Complex." Brick base with a limestone cap. 4" high x 1/4" thick address mounted to base.

Scale = 1:20

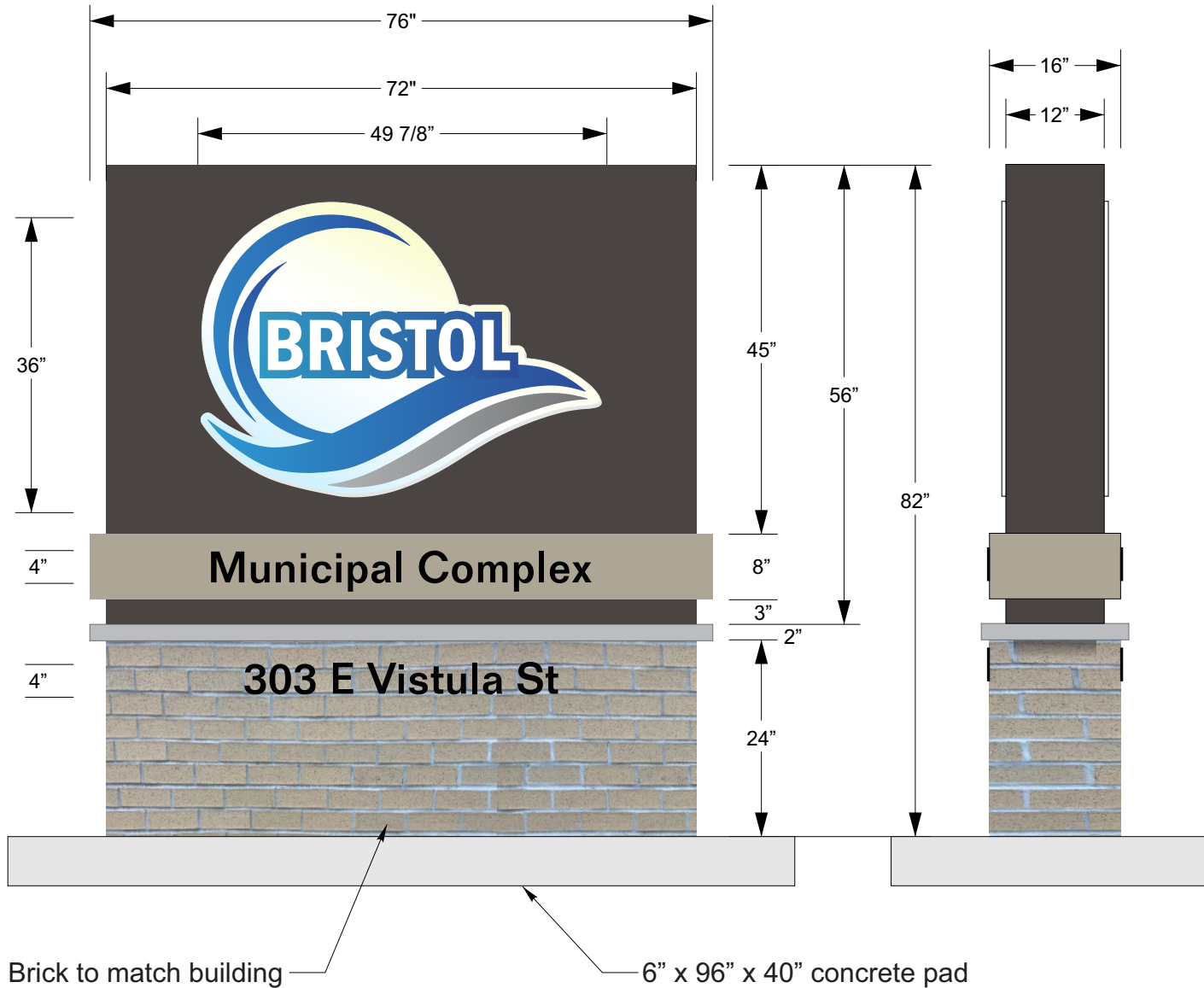


Proposed Night View

Scale = 1:20

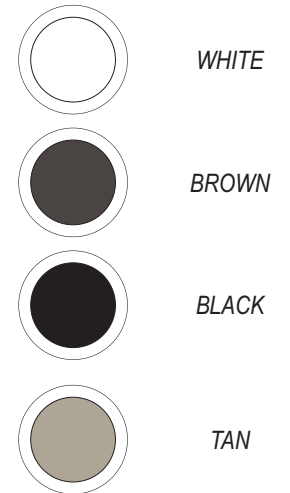


Sign A



Scale = 1:20

SPECIFICATIONS: COLORS



SPECIFICATIONS: FABRICATION

- Quantity: One (1) double face
- Overall Height: 82"
- Overall Width: 76"
- Faces: aluminum cabinet
- Total Square Feet: 42.2sq'

Page 4



This drawing is property of US Signcrafters Inc and Building Impressions. No reproductions or exhibitions are permitted without the expressed written consent of US Signcrafters Inc. An assessed value of the artwork and concepts provided is a \$2,500.00 fee to be charged for any misuse or use without consent. By signing, you, your company and employer understand and accept that this artwork, all aspects, specification, sizes, colors and spelling are approved for production. The colors of the artwork are approximate and might not match the actual production colors.



USSIGNCRAFTERS.COM
INFO@USSIGNCRAFTERS.COM



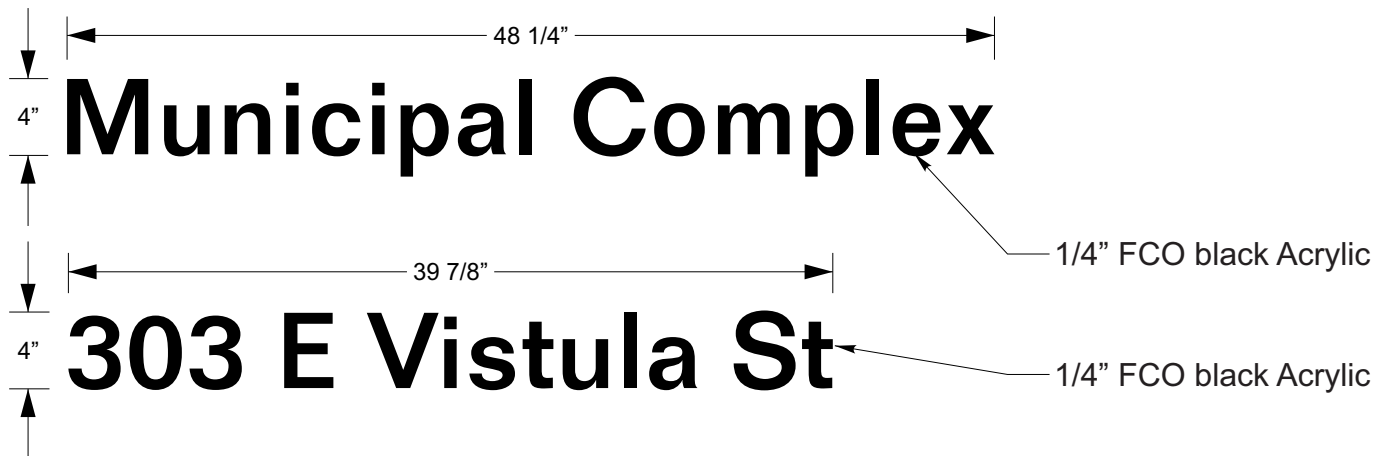
216 LINCOLNWAY EAST
OSCEOLA, IN 46561



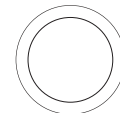
800.659.6319
574.674.5055



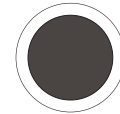
CLIENT APPROVAL & DATE



• SPECIFICATIONS: COLORS



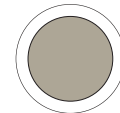
WHITE



BROWN



BLACK



TAN

Scale = 1:10

Page 5



USSIGNCRAFTERS.COM
INFO@USSIGNCRAFTERS.COM



216 LINCOLNWAY EAST
OSCEOLA, IN 46561



800.659.6319
574.674.5055

This drawing is property of US Signcrafters Inc and Building Impressions. No reproductions or exhibitions are permitted without the expressed written consent of US Signcrafters Inc. An assessed value of the artwork and concepts provided is a \$2,500.00 fee to be charged for any misuse or use without consent. By signing, you, your company and employer understand and accept that this artwork, all aspects, specification, sizes, colors and spelling are approved for production. The colors of the artwork are approximate and might not match the actual production colors.



CLIENT APPROVAL & DATE

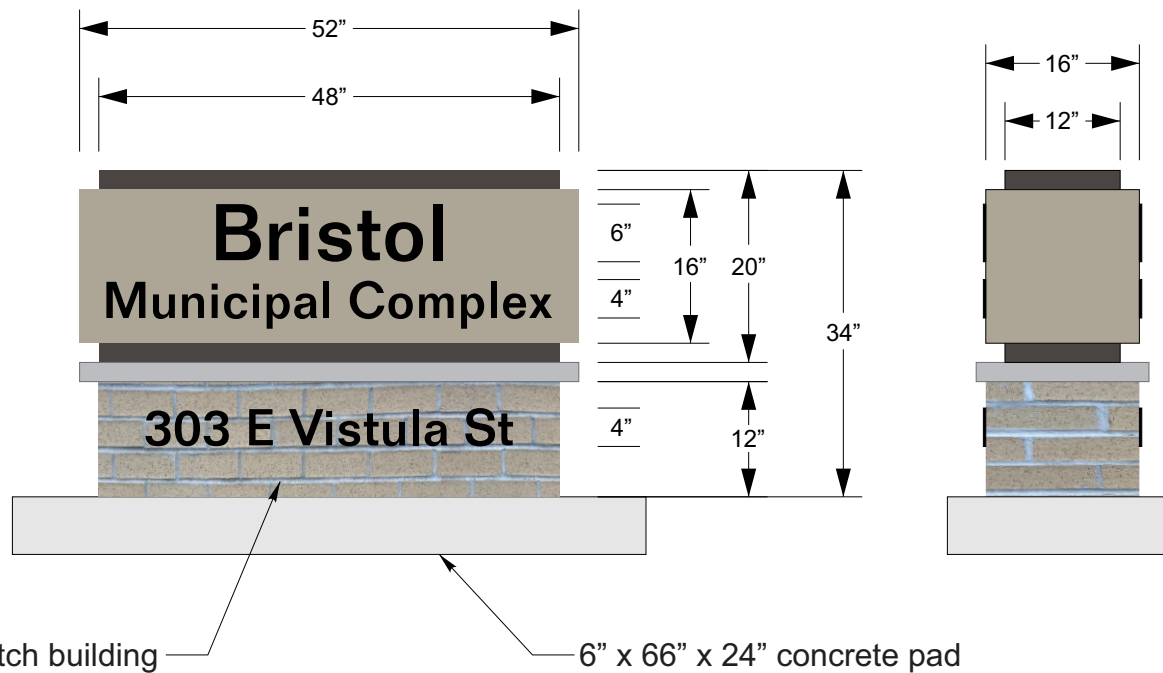


Proposed

One (1) double sided non illuminated monument sign. Painted 20" high x 48" wide x 12" deep cabinet. 16" high painted aluminum band with 6" high x 1/2" thick "Bristol" black acrylic letters and 4" high x 1/2" thick "Municipal Complex" black acrylic letters. Brick base with a limestone cap. 4" high x 1/4" thick black acrylic address attached to base.

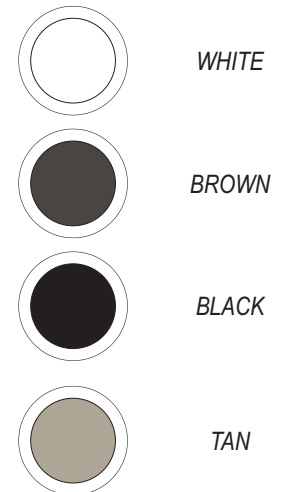
Scale = 1:20

Sign B



Scale = 1:20

• SPECIFICATIONS: COLORS



• SPECIFICATIONS: FABRICATION

- Quantity: One (1) double face
- Overall Height: 34"
- Overall Width: 52"
- Faces: aluminum cabinet
- Total Square Feet: 12.2sq'

Page 10



This drawing is property of US Signcrafters Inc and Building Impressions. No reproductions or exhibitions are permitted without the expressed written consent of US Signcrafters Inc. An assessed value of the artwork and concepts provided is a \$2,500.00 fee to be charged for any misuse or use without consent. By signing, you, your company and employer understand and accept that this artwork, all aspects, specification, sizes, colors and spelling are approved for production. The colors of the artwork are approximate and might not match the actual production colors.



USSIGNCRAFTERS.COM
INFO@USSIGNCRAFTERS.COM



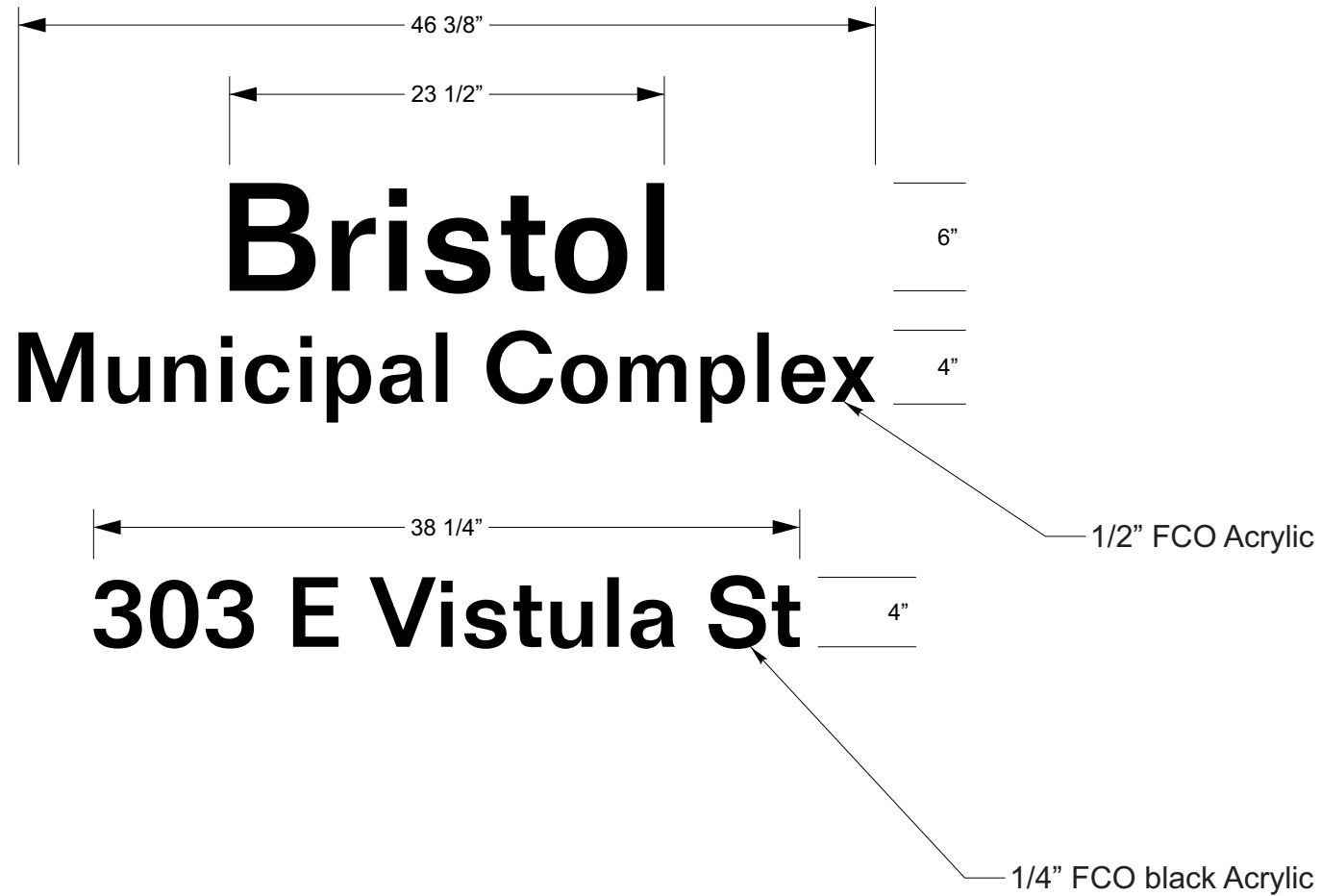
216 LINCOLNWAY EAST
OSCEOLA, IN 46561



800.659.6319
574.674.5055



CLIENT APPROVAL & DATE



- SPECIFICATIONS: COLORS



BLACK

Scale = 1:10

Page 11



USSIGNCRAFTERS.COM
INFO@USSIGNCRAFTERS.COM



216 LINCOLNWAY EAST
OSCEOLA, IN 46561



800.659.6319
574.674.5055

This drawing is property of US Signcrafters Inc and Building Impressions. No reproductions or exhibitions are permitted without the expressed written consent of US Signcrafters Inc. An assessed value of the artwork and concepts provided is a \$2,500.00 fee to be charged for any misuse or use without consent. By signing, you, your company and employer understand and accept that this artwork, all aspects, specification, sizes, colors and spelling are approved for production. The colors of the artwork are approximate and might not match the actual production colors.



CLIENT APPROVAL & DATE