

PURPOSE: *The St. Joseph River Basin Commission exists to provide a forum for the discussion, study and evaluation of water resource issues of common concern and foster cooperative planning and coordinated management of the basin's water and related land resources.*

The St. Joseph River Basin Commission was created by the Indiana General Assembly in 1988 to address water quality issues in the St. Joseph River and all the lakes and streams that flow to it. The enabling statute of the Commission (IC 14-30-3) was amended in 2018 to expand the scope and powers of the Commission to address flooding as well. The Commission seeks to work with agencies, organizations and local units of government to:

- Develop plans and tools to improve water quality or mitigate flooding in the basin;
- Coordinate monitoring of water quality and hydrology in the basin;
- Promote best practices for urban stormwater and rural drainage management;
- Develop strategies to increase water infiltration and storage capacity in the basin;
- Distribute reports on the Commission's objectives, studies, and findings;
- Make recommendations in matters related to the Commission's objectives to political subdivisions in the basin and to other public and private agencies;
- Act as a coordinating agency for programs and activities of other public and private agencies that are related to the Commission's objectives;
- Serve as an advocate of the basin's interests before Congress and federal, state and local government agencies.

The SJRBC shall consist of the following (or their proxy):

- The **Mayor** of each Class-II City or the Executive of the municipality with the largest population if the County does not have a Class-II city
- A **County Commissioner** from each County
- The **Health Officer** from each County
- The **County Surveyor** from each County
- A **Representative of the SWCD** from each County
- The Director of the Indiana DNR

(paraphrased from IC 14-30-3-8)

SETTLEMENT FUNDS – DISTRIBUTION AND APPLICATION REQUIREMENTS

MONITORING FUND (\$42,895,000)

Every Settlement Class Member will receive a minimum payment from the Monitoring Fund as consideration for a Release. The funds are intended to pay for PCB sampling and/or any other mitigation efforts in the Settlement Class Member's sole discretion, as part of compliance with applicable law.

The amount of Monitoring Fund payments are based on each Settlement Class Member's NDPES Permittee status as Phase I or Phase II and each Settlement Class Member's population as follows:

1. Phase I \geq 100,000 pop. and Phase I independent port districts: $68 \times \$32,024.47 = \$2,177,663.96$
2. Phase I $<$ 100,000 pop.: $68 \times \$22,024.47 = \$1,497,663.96$
3. Phase II \geq 100,000 pop. and Phase II independent port districts: $214 \times \$27,024.47 = \$5,783,236.58$
4. Phase II $<$ 100,000 pop.: $1,956 \times \$17,024.47 = \$33,299,863.32$

Monitoring Fund Partial Payments: TMDL Entities receiving TMDL Funds between fifty thousand dollars (\$50,000) and one hundred thousand dollars (\$100,000) will receive a Monitoring Fund Partial Payment. The fourteen (14) TMDL Entities receiving a Monitoring Fund Partial Payment are identified [HERE](#), for a total of \$136,565.61.

Refer to the [Class Action Settlement Agreement, Exhibit A – Initial Settlement Class Members](#) for the MS4 NPDES Phase I or II by Population identification and Settlement Amount under the Monitoring Fund.

St. Joseph River Basin communities receiving PCB settlement funds from Monsanto:

- City of Angola
- Town of Bristol
- Elkhart County*
- City of Elkhart
- City of Goshen
- City of Kendallville
- Kosciusko County
- City of Mishawaka
- Town of Osceola
- Town of Roseland
- City of South Bend*
- St. Joseph County*
- Steuben County

**indicates communities who received ~\$27K; all other communities received ~\$17K*



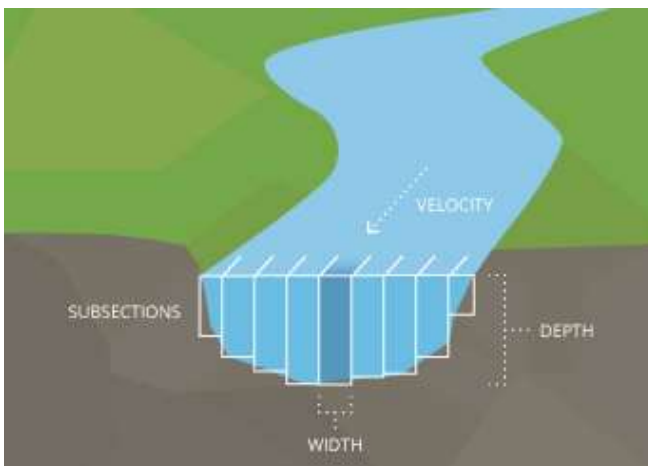
The St. Joseph River Basin Commission is offering a **cost-share opportunity** that allows communities to leverage their Monsanto settlement funds **for water monitoring** to support decision-making regarding water availability, land use and development in the region.

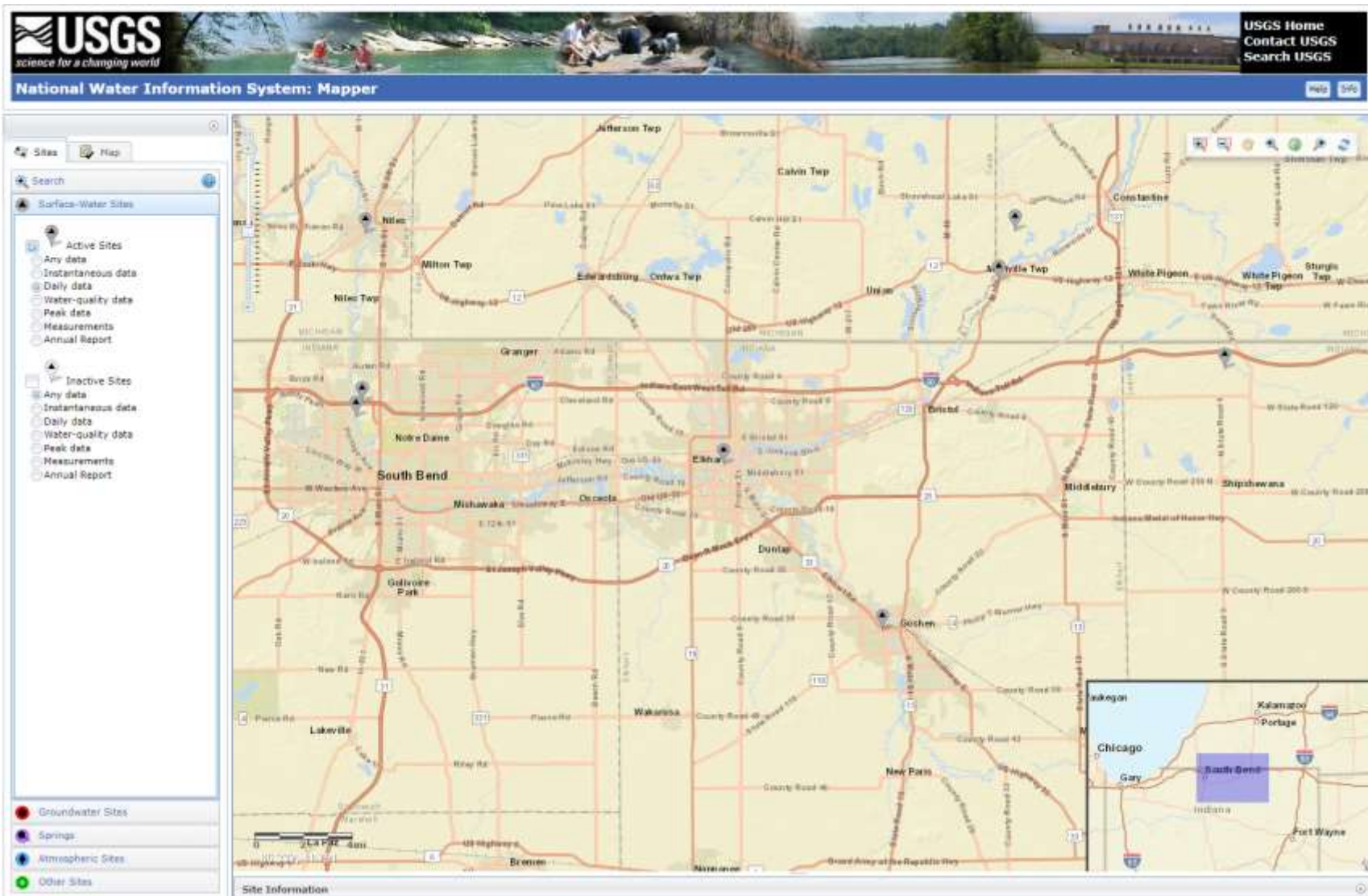
The Commission will:

- Purchase the equipment, consisting of solar-powered sensors with cellular connectivity for real-time data transmission
- Pay the annual service fees for data transmission associated with the monitoring equipment
- Manage the contracts with service providers
- Secure contractor to install monitoring equipment and conduct the field measurements at selected monitoring sites.

The Local Government will:

- Reimburse the Commission for equipment installation and field measurements at selected monitoring sites.

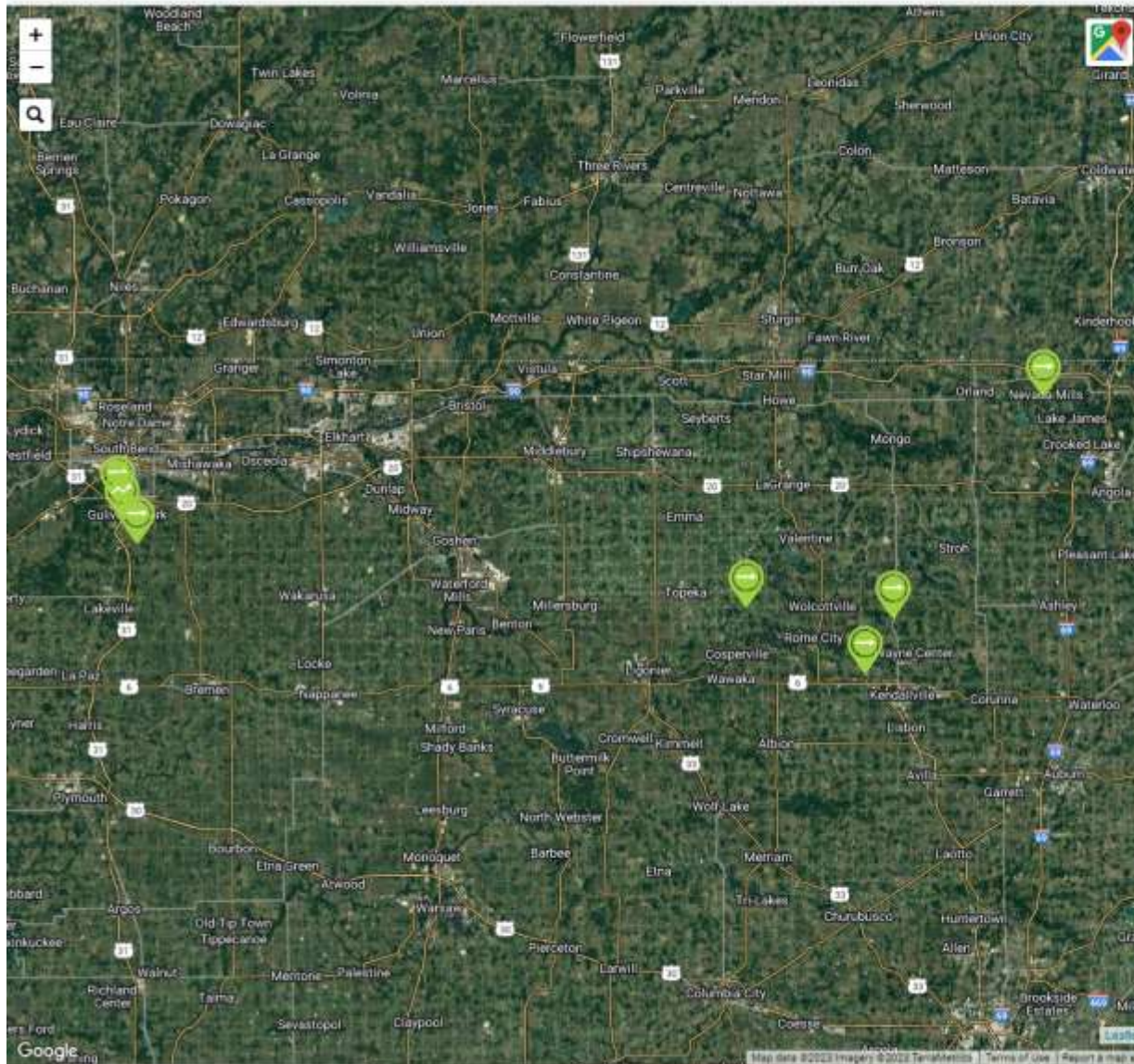






US IN/MI: SJRBC

+Tollhawl / US IN/MI SJRBC



Active Sensors

All Sensors



Phillips Ditch Station 3 (Mia...

1417376581

0.69 ft 3 hours ago



NB1 - North Branch Elkhart ...

11027481 MACOG (7481)

2.09 ft 3 hours ago



Phillips Ditch Station 2 (Ker...

1862281741

0.08 ft 2 hours ago



NB3 - North Branch Elkhart...

1854282107 MACOG(2107)

2.59 ft 2 hours ago



Phillips Ditch Station 1 (U.S....

173442082

1.17 ft 3 hours ago



NB2- North Branch Elkhart ...

958032263 MACOG (2263)

2.49 ft an hour ago

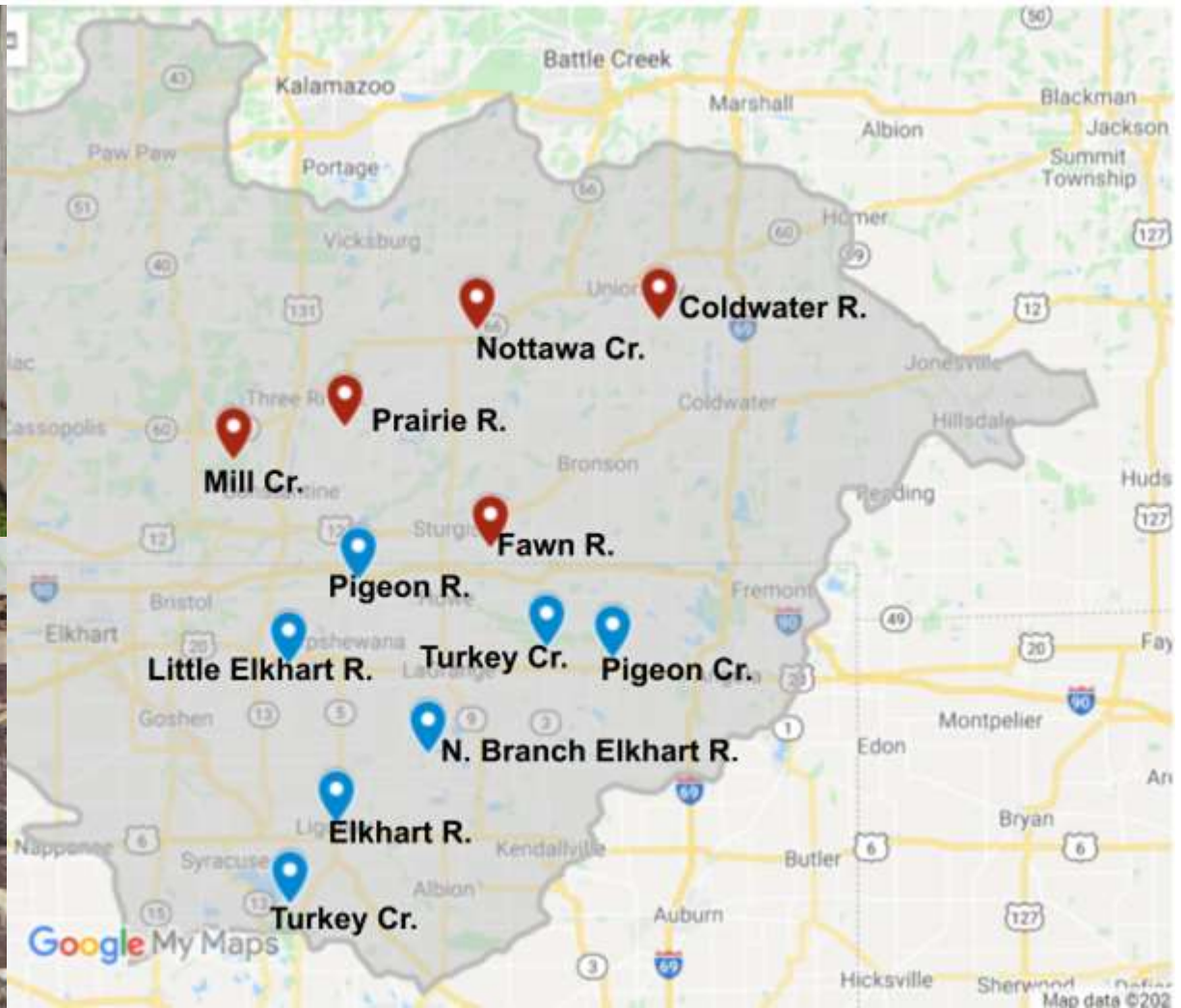


Fawn River (FR1) - Nevada ...

385631794 MACOG (1794)

3.31 ft 2 hours ago

SJRBC Biological Monitoring Program Sites



Site Name (catchment area, square miles)	ICI Score 2021	ICI Score 2022
Mill Creek (reference site) @ Preston Road	40 (Good)	48 (Exceptional)
Prairie River @ Hoshel Canoe County Park	26 (Fair)	44 (Very Good)
Nottawa Creek @ Olney Road	50 (Exceptional)	52 (Exceptional)
Coldwater River @ Riverbend County Park	42 (Very Good)	50 (Exceptional)
Fawn River @ Kime Bridge	38 (Good)	48 (Exceptional)
Pigeon Creek @ CR 327 near Angola	46 (Exceptional)	44 (Very Good)
Pigeon River @ Scott Mill	30 (Fair)	50 (Exceptional)
North Branch Elkhart River @ Delt Church Park	38 (Good)	34 (Marg. Good)
Elkhart River @ Ligonier	28 (Fair)	36 (Good)
Turkey Creek @ Wawasee Area	44 (Very Good)	54 (Exceptional)
Little Elkhart River @ CR 18 in Middlebury	42 (Very Good)	48 (Exceptional)
Turkey Creek of the Pigeon River	ND	50 (Exceptional)