



| SINCE 1993



VALUE  
INNOVATION  
COMMUNICATION  
EXPERIENCE



USSIGNCRAFTERS.COM  
INFO@USSIGNCRAFTERS.COM



800.659.6319  
574.674.5055



216 LINCOLNWAY EAST  
OSCEOLA, IN 46561



Sign A

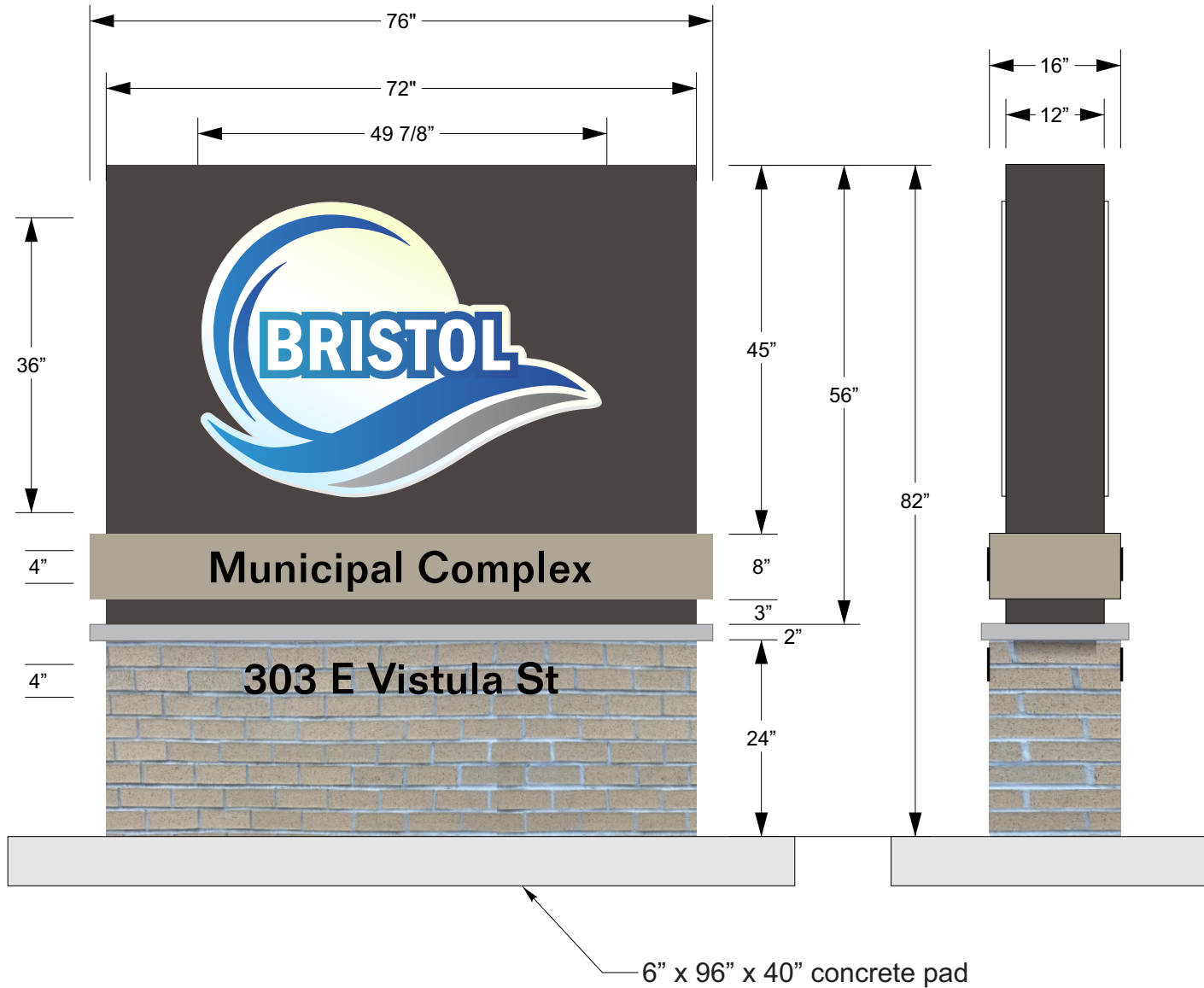
Proposed

One (1) double sided non illuminated monument sign. Painted 56" high x 72" wide x 12" deep cabinet with 1/2" thick FCO white acrylic custom logo with digitally printed graphics. 8" high painted aluminum band with 4" high x 1/4" thick black acrylic letters "Municipal Complex." Brick base with a limestone cap. 4" high x 1/4" thick address mounted to base.

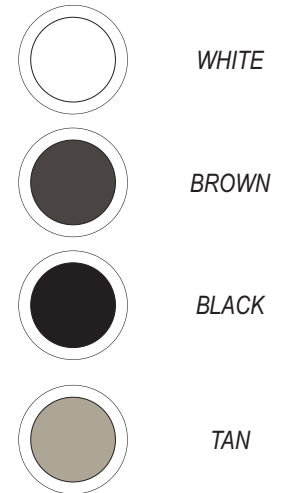
Scale = 1:20

Page 2

# Sign A



## • SPECIFICATIONS: COLORS



## • SPECIFICATIONS: FABRICATION

- Quantity: One (1) double face
- Overall Height: 82"
- Overall Width: 76"
- Faces: aluminum cabinet
- Total Square Feet: 42.2sq'

Scale = 1:20

Page 3



USSIGNCRAFTERS.COM  
INFO@USSIGNCRAFTERS.COM



216 LINCOLNWAY EAST  
OSCEOLA, IN 46561



800.659.6319  
574.674.5055

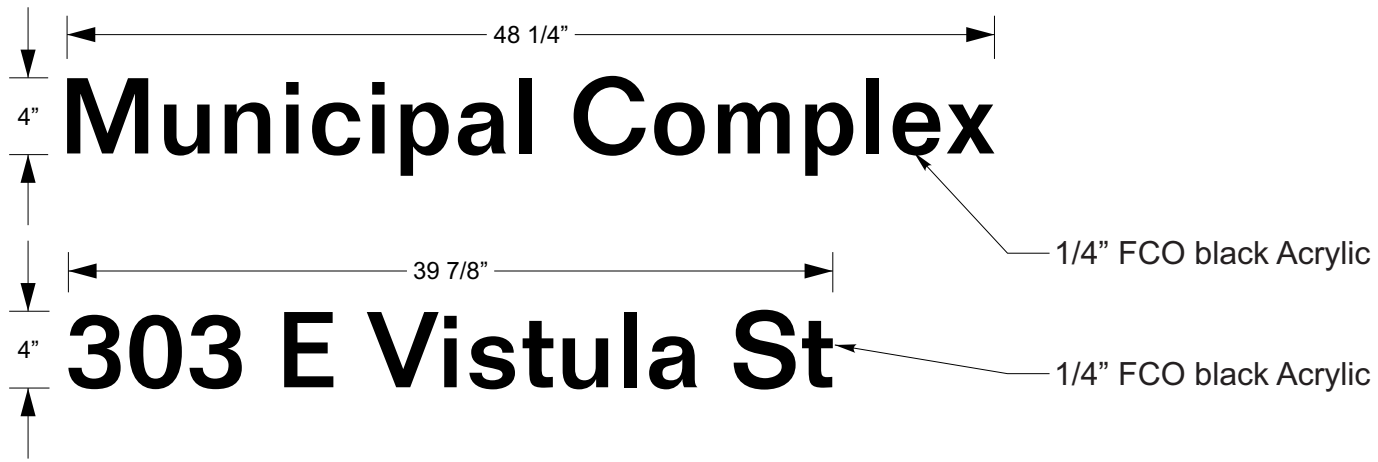
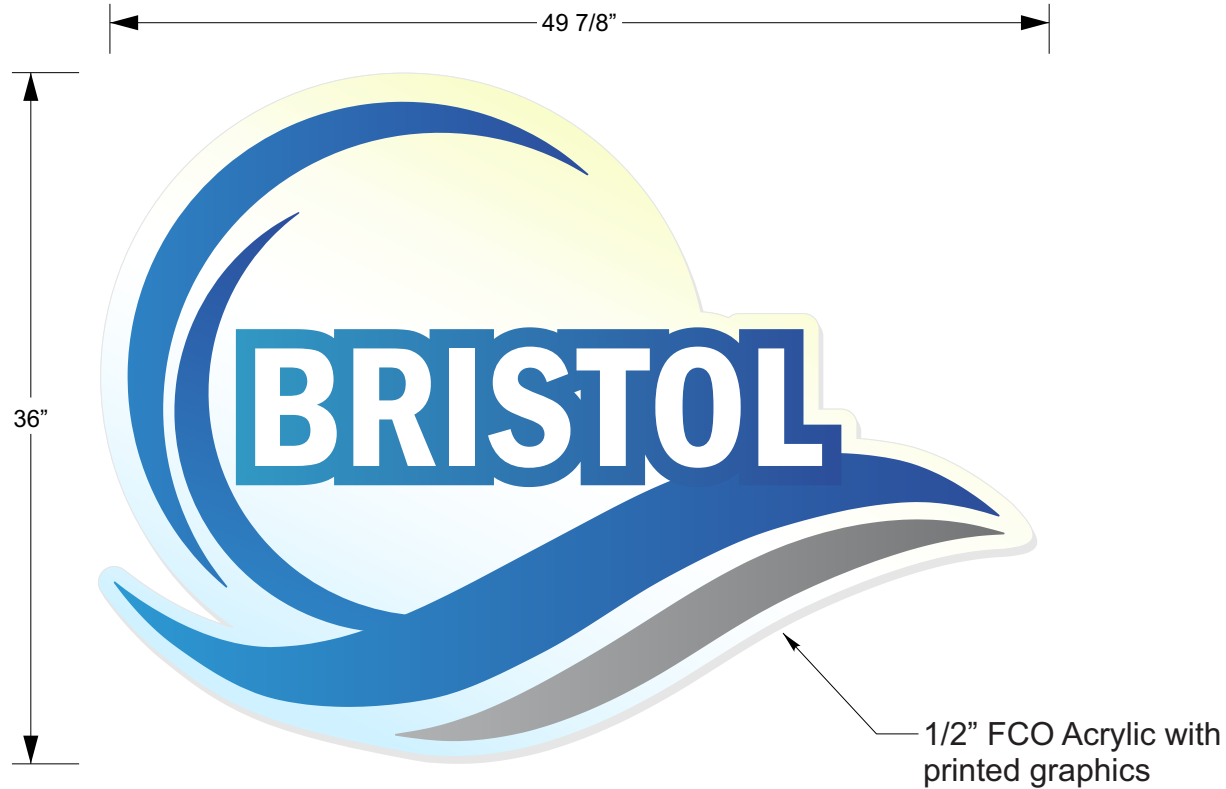
This drawing is property of US Signcrafters Inc and Building Impressions. No reproductions or exhibitions are permitted without the expressed written consent of US Signcrafters Inc. An assessed value of the artwork and concepts provided is a \$2,500.00 fee to be charged for any misuse or use without consent. By signing, you, your company and employer understand and accept that this artwork, all aspects, specification, sizes, colors and spelling are approved for production. The colors of the artwork are approximate and might not match the actual production colors.



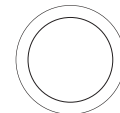
CLIENT APPROVAL & DATE

## Flat Cut Out Details

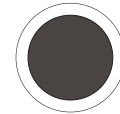
Sign A



### • SPECIFICATIONS: COLORS



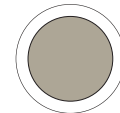
WHITE



BROWN



BLACK



TAN

Scale = 1:10

Page 4



USSIGNCRAFTERS.COM  
INFO@USSIGNCRAFTERS.COM



216 LINCOLNWAY EAST  
OSCEOLA, IN 46561



800.659.6319  
574.674.5055

This drawing is property of US Signcrafters Inc and Building Impressions. No reproductions or exhibitions are permitted without the expressed written consent of US Signcrafters Inc. An assessed value of the artwork and concepts provided is a \$2,500.00 fee to be charged for any misuse or use without consent. By signing, you, your company and employer understand and accept that this artwork, all aspects, specification, sizes, colors and spelling are approved for production. The colors of the artwork are approximate and might not match the actual production colors.



CLIENT APPROVAL & DATE

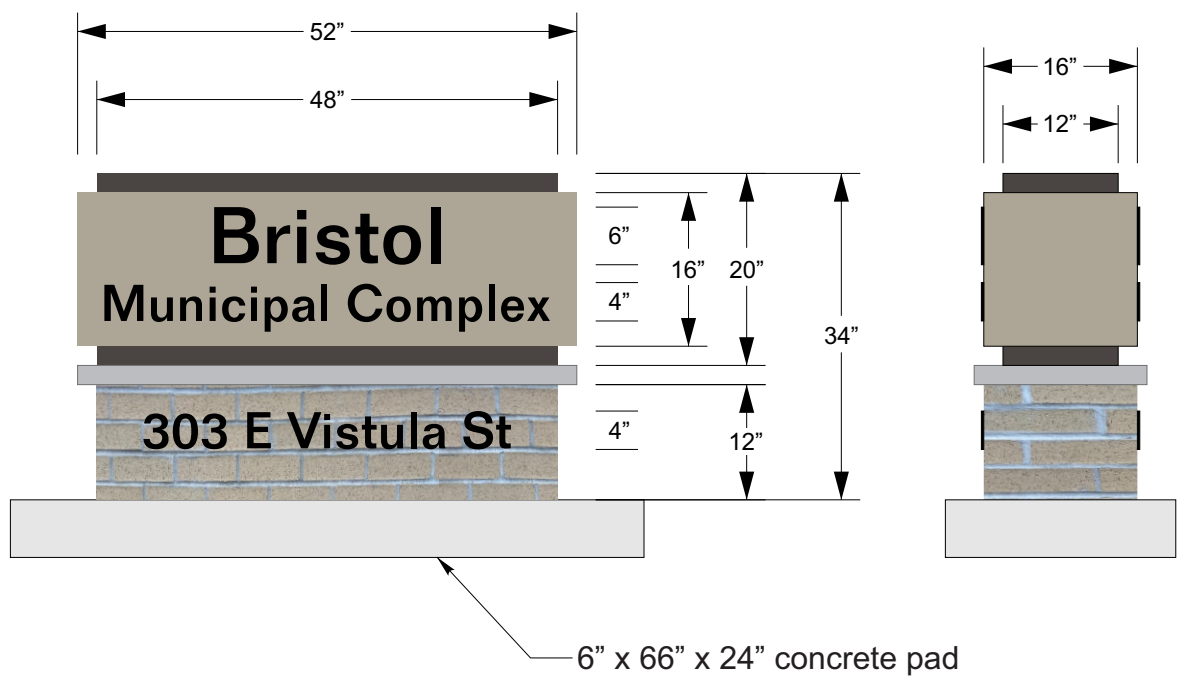


Proposed

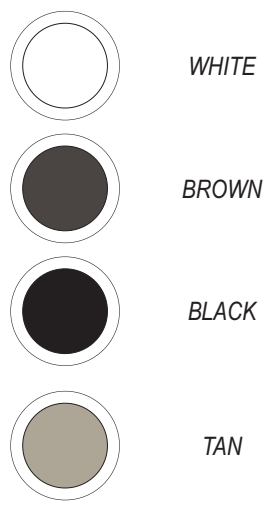
*One (1) double sided non illuminated monument sign. Painted 20" high x 48" wide x 12" deep cabinet. 16" high painted aluminum band with 6" high x 1/2" thick "Bristol" black acrylic letters and 4" high x 1/2" thick "Municipal Complex" black acrylic letters. Brick base with a limestone cap. 4" high x 1/4" thick black acrylic address attached to base.*

Scale = 1:20

# Sign B



● SPECIFICATIONS: COLORS



● SPECIFICATIONS: FABRICATION

- Quantity: One (1) double face
- Overall Height: 34"
- Overall Width: 52"
- Faces: aluminum cabinet
- Total Square Feet: 12.2sq'

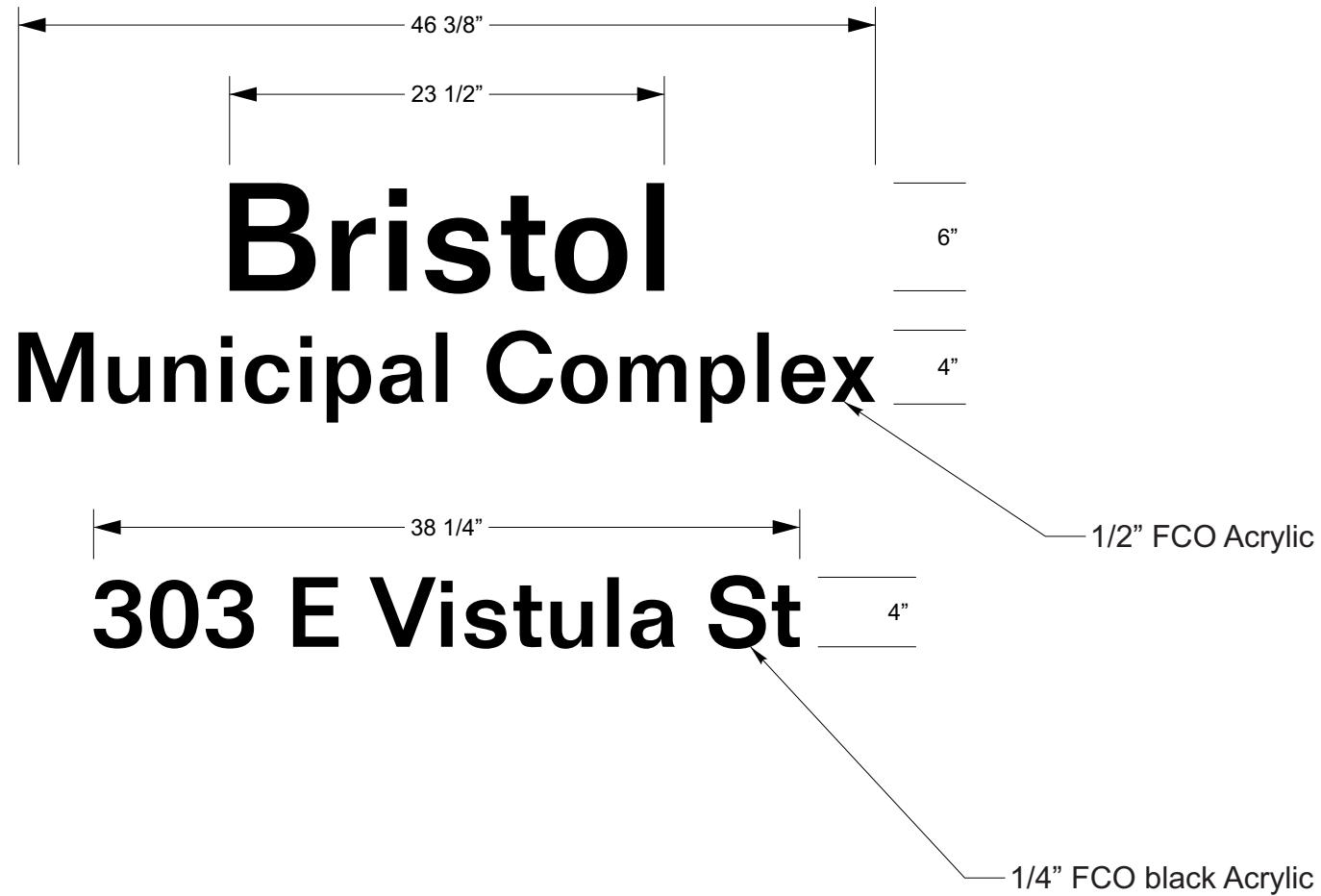
Scale = 1:20



This drawing is property of US Signcrafters Inc and Building Impressions. No reproductions or exhibitions are permitted without the expressed written consent of US Signcrafters Inc. An assessed value of the artwork and concepts provided is a \$2,500.00 fee to be charged for any misuse or use without consent. By signing, you, your company and employer understand and accept that this artwork, all aspects, specification, sizes, colors and spelling are approved for production. The colors of the artwork are approximate and might not match the actual production colors.



CLIENT APPROVAL & DATE



- SPECIFICATIONS: COLORS



BLACK

Scale = 1:10

Page 7



USSIGNCRAFTERS.COM  
INFO@USSIGNCRAFTERS.COM



216 LINCOLNWAY EAST  
OSCEOLA, IN 46561



800.659.6319  
574.674.5055

This drawing is property of US Signcrafters Inc and Building Impressions. No reproductions or exhibitions are permitted without the expressed written consent of US Signcrafters Inc. An assessed value of the artwork and concepts provided is a \$2,500.00 fee to be charged for any misuse or use without consent. By signing, you, your company and employer understand and accept that this artwork, all aspects, specification, sizes, colors and spelling are approved for production. The colors of the artwork are approximate and might not match the actual production colors.



CLIENT APPROVAL &amp; DATE