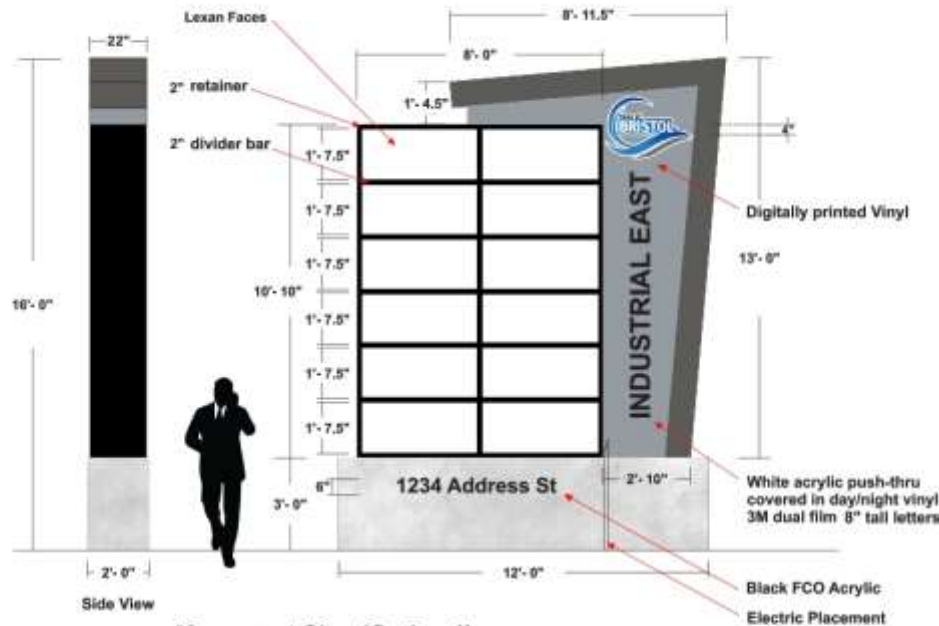


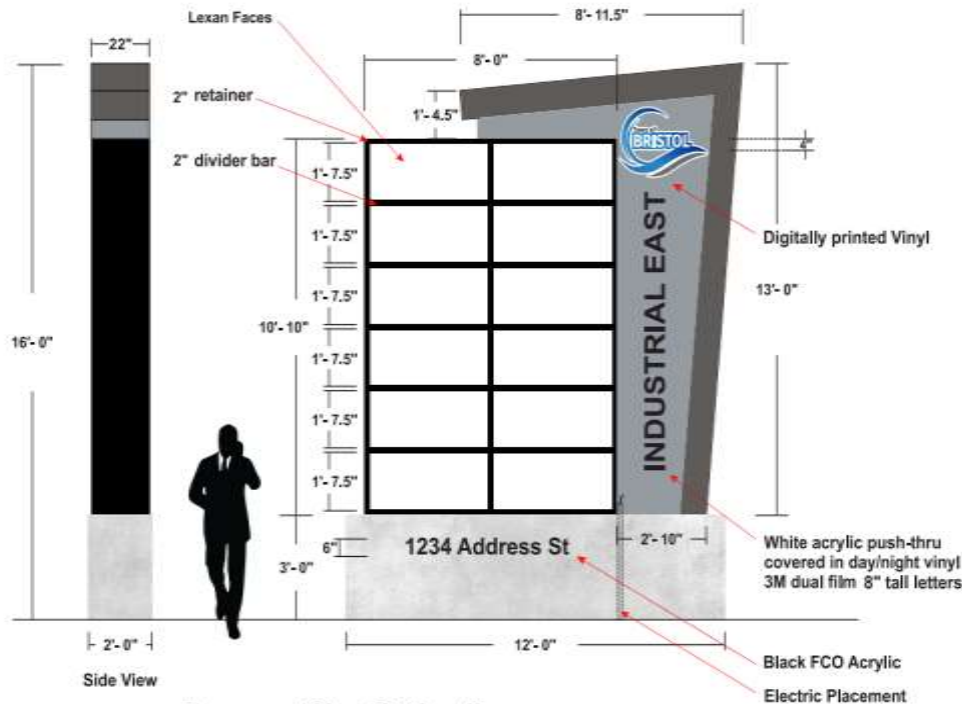


Existi  
ng  
Sign



**Score  
Sheet  
Proposal  
Number  
101  
Scored  
3<sup>rd</sup> place**

**\$76,724.00**



### Monument Sign (Option 1)

- Aluminum tenant cabinet with Lexan faces
- Monument cabinet with push-thru acrylic covered in dual 3M film
- Two (2) sign cabinets bolted together
- Internally-illuminated with white LEDs
- Concrete base
- Double-sided sign

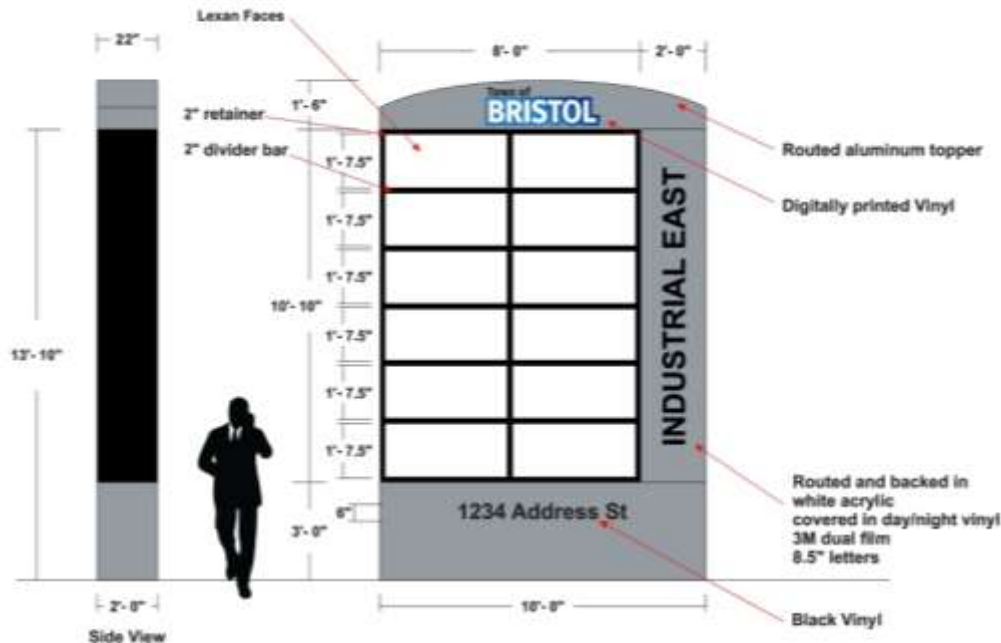
■	PMS black 4 C
■	CECO Charcoal Gray
■	CECO Tundra

**Number  
101**

**Scored 3<sup>rd</sup>  
place**

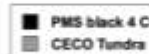
**Modified.  
Elimnates  
concrete  
base**

**\$61,649.78**



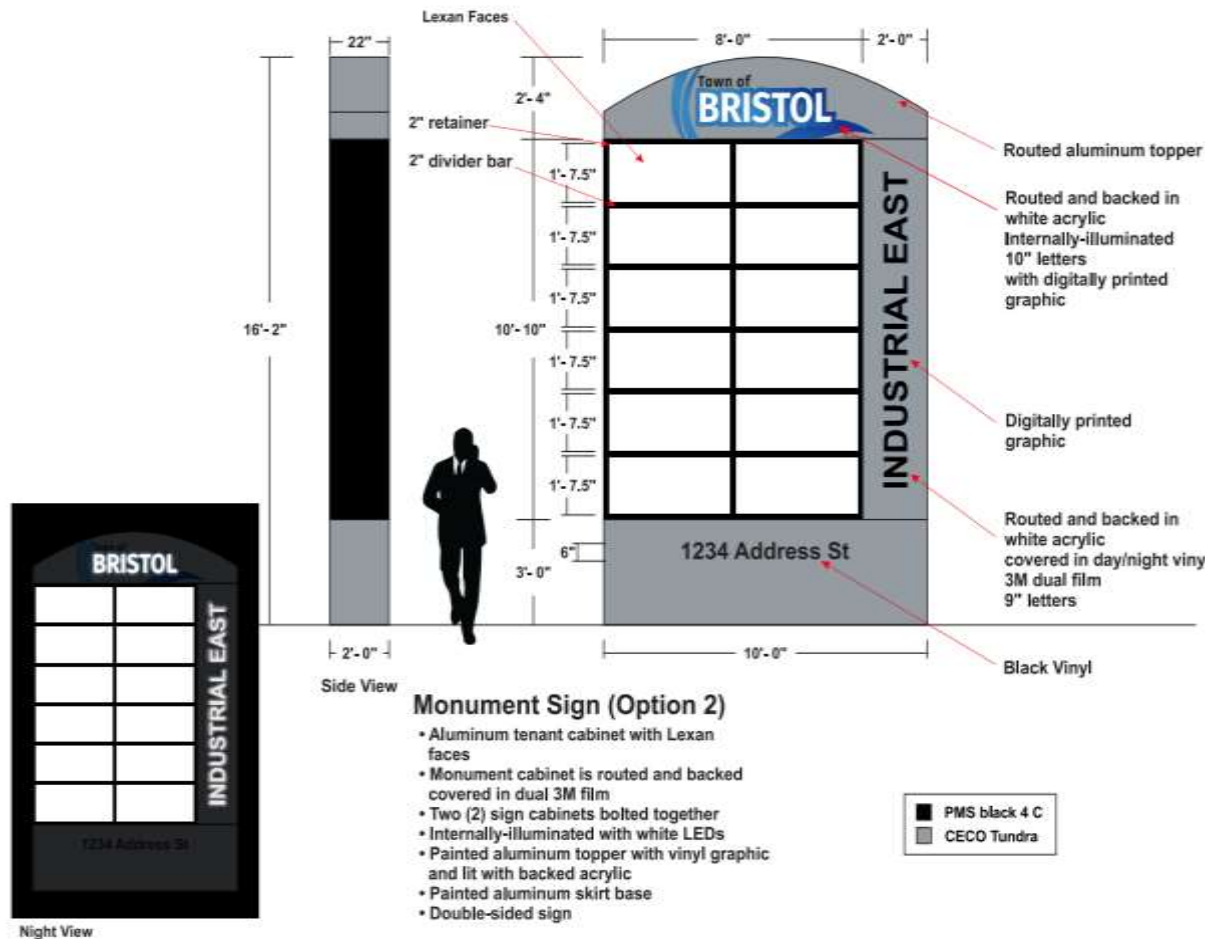
### Monument Sign (Option 2)

- Aluminum tenant cabinet with Lexan faces
- Monument cabinet is routed and backed covered in dual 3M film
- Two (2) sign cabinets bolted together
- Internally-illuminated with white LEDs
- Painted aluminum topper with vinyl graphic
- Painted aluminum skirt base
- Double-sided sign

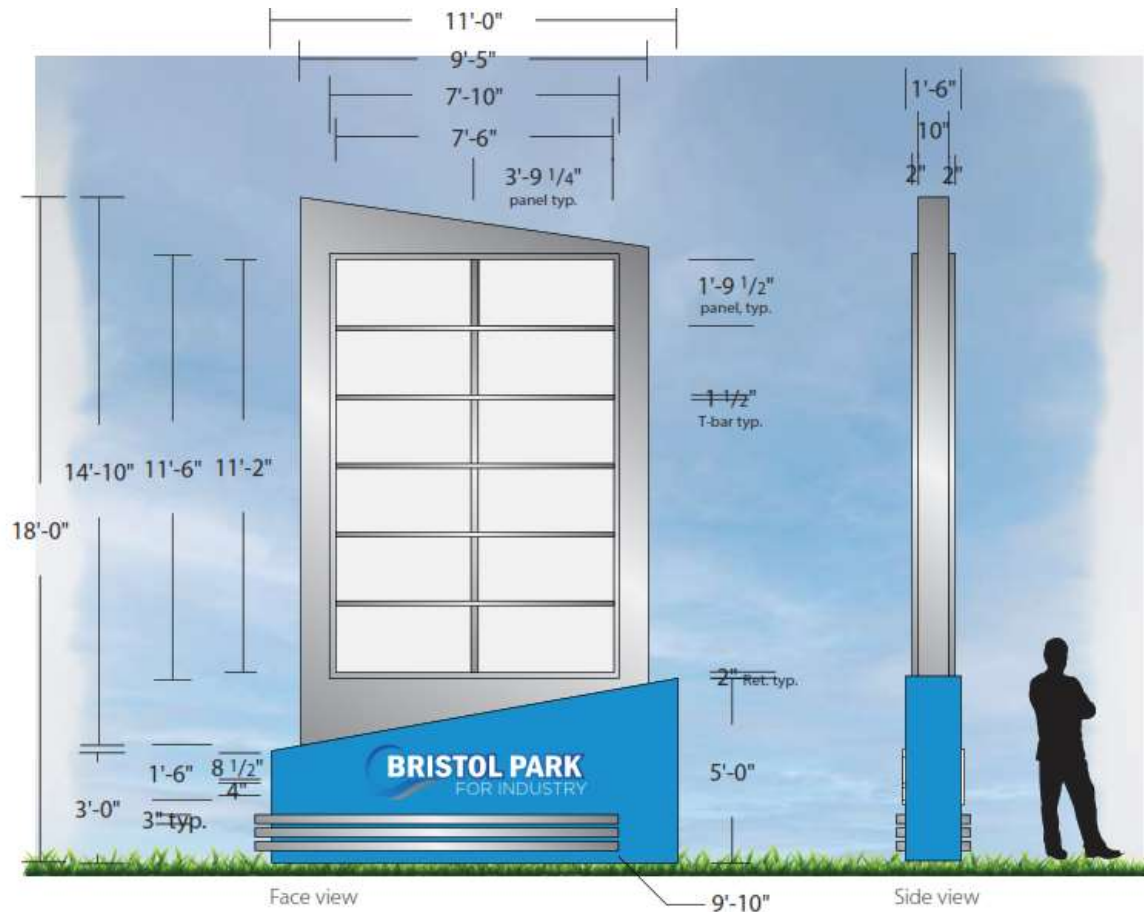


Score  
Sheet  
Proposal  
Number  
102  
Scored #  
1

\$39,535.0  
0



**Score  
Sheet  
Proposal  
Number  
102  
Scored #  
1  
Modified  
\$44,977**



**Score  
Sheet  
Proposal  
Number  
104**

**Scored #2  
\$62,304.9  
2**

**Potential  
net cost  
\$38,304.92**



Proposed - night time view

**Score  
Sheet  
Proposal  
Number  
104**