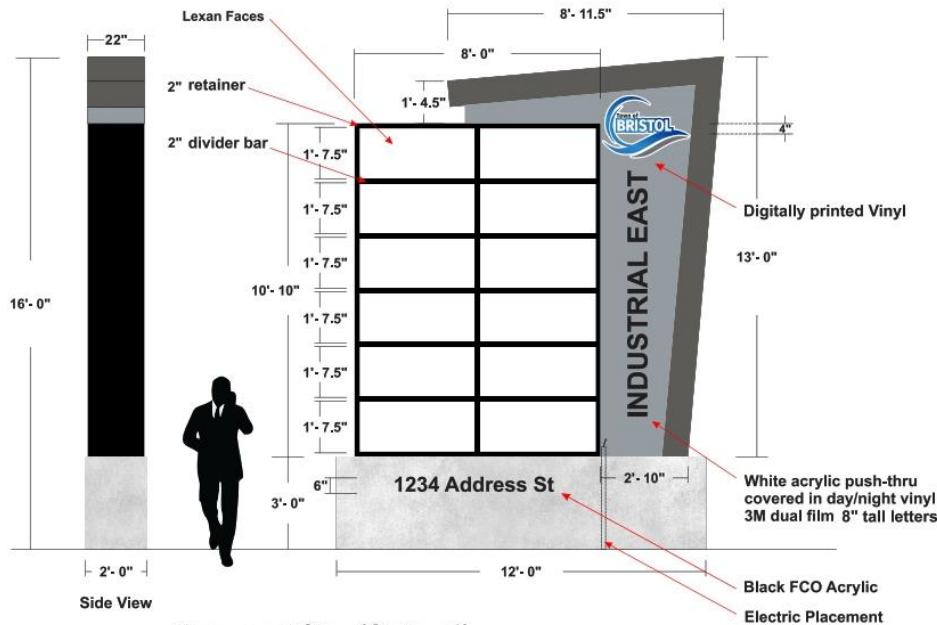




## Existing Sign

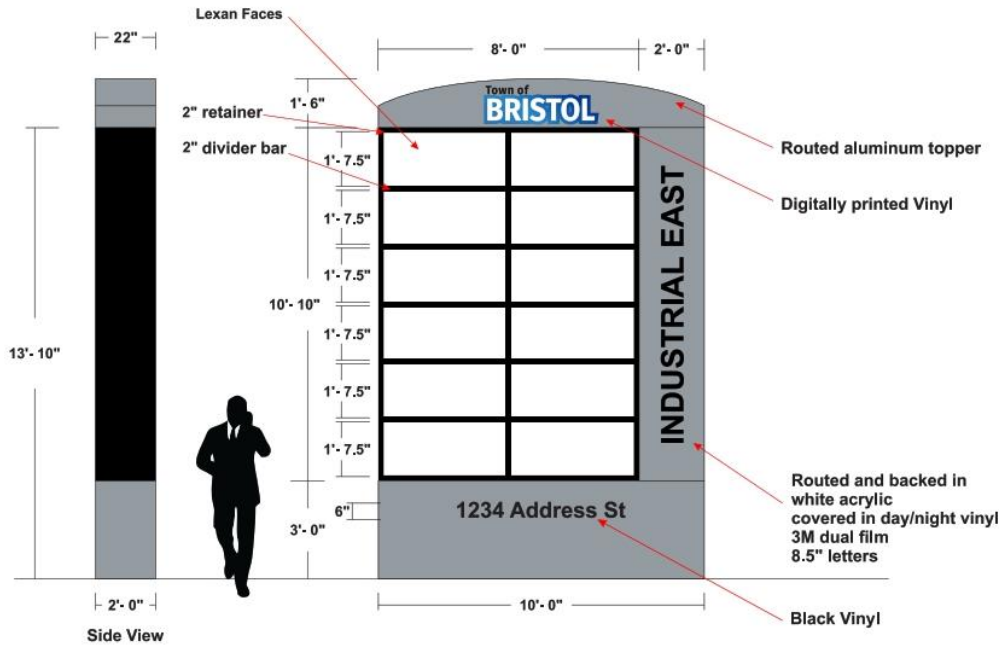


**Monument Sign (Option 1)**

- Aluminum tenant cabinet with Lexan faces
- Monument cabinet with push-thru acrylic covered in dual 3M film
- Two (2) sign cabinets bolted together
- Internally-illuminated with white LEDs
- Concrete base
- Double-sided sign

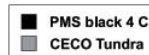
■	PMS black 4 C
■	CECO Charcoal Gray
■	CECO Tundra

**Score Sheet  
Proposal  
Number 101  
\$76,724.00  
Potential net cost  
\$52,724**

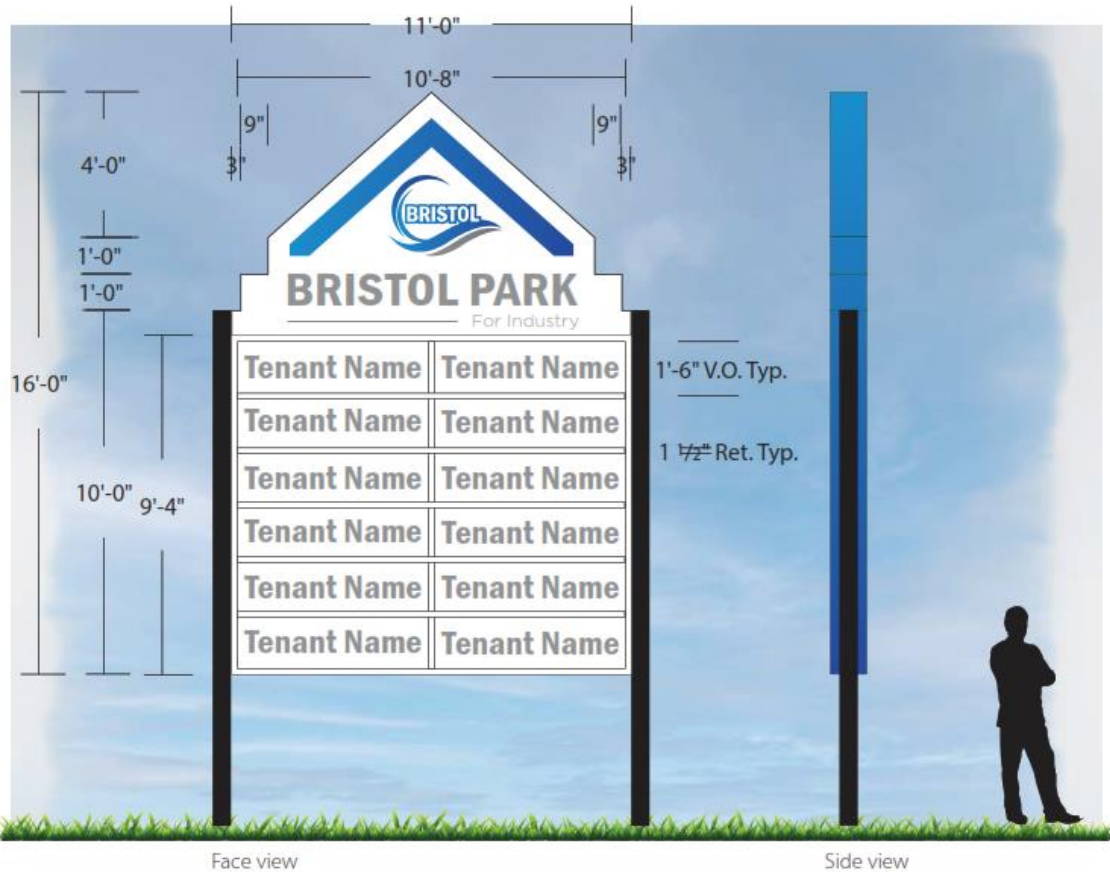


### Monument Sign (Option 2)

- Aluminum tenant cabinet with Lexan faces
- Monument cabinet is routed and backed covered in dual 3M film
- Two (2) sign cabinets bolted together
- Internally-illuminated with white LEDs
- Painted aluminum topper with vinyl graphic
- Painted aluminum skirt base
- Double-sided sign



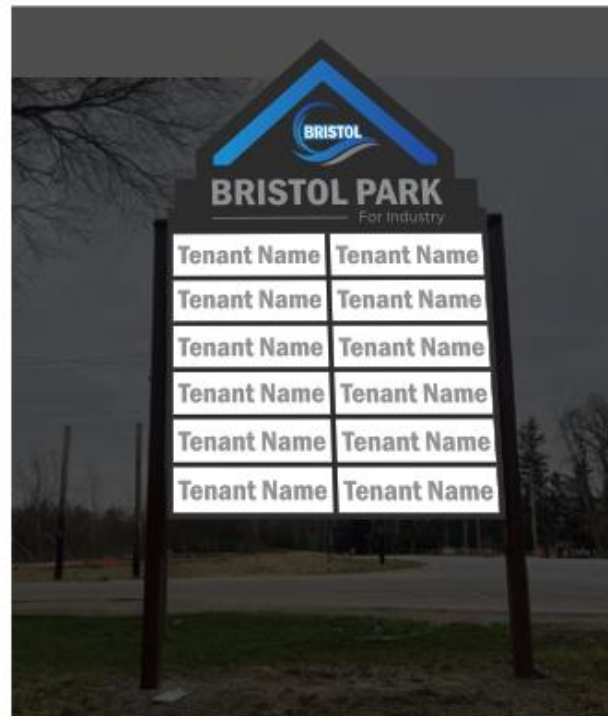
**Score Sheet  
Proposal  
Number 102  
\$39,535  
Potential net cost  
\$15,535**



**Score Sheet  
Proposal  
Number 103  
\$46,222.06  
Potential net cost  
\$22,222.06**

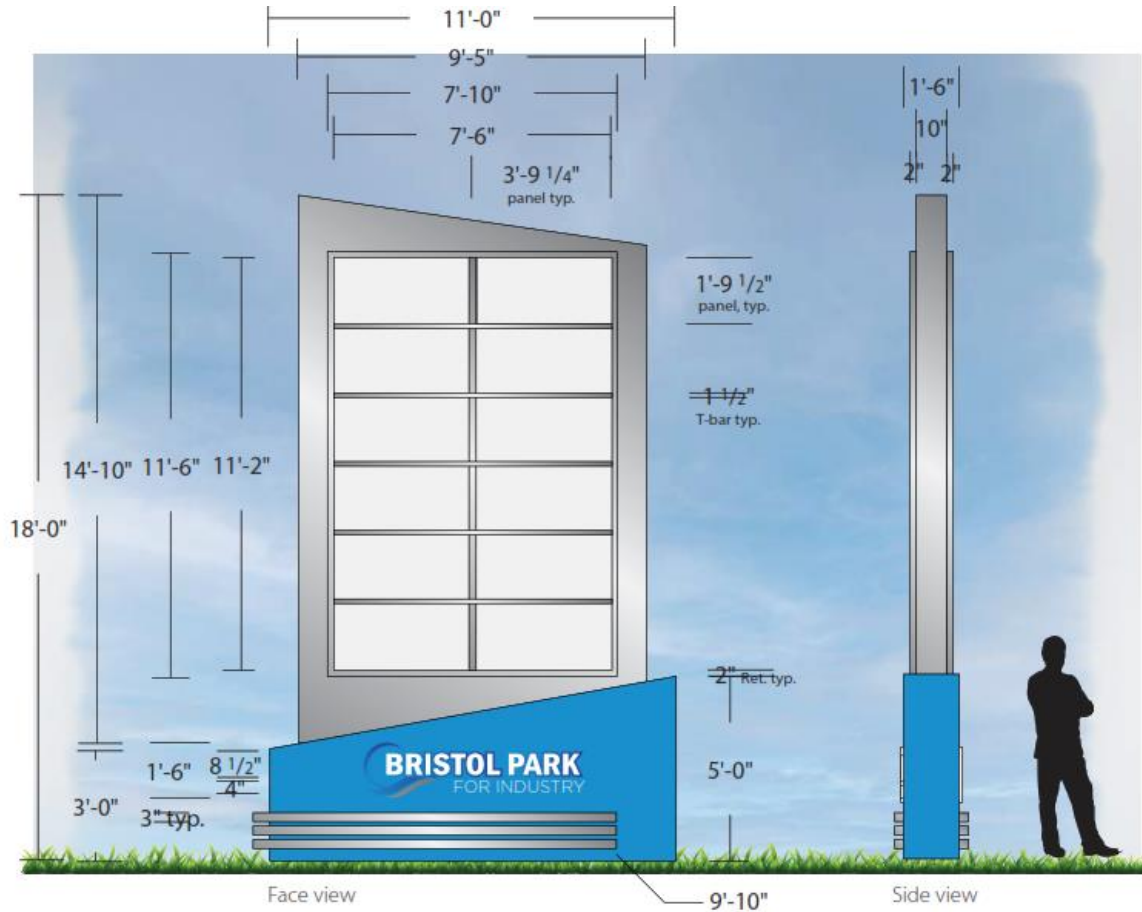


Proposed



Proposed

**Score Sheet  
Proposal  
Number 103  
\$46,222.06  
Potential net cost  
\$22,222.06**



**Score Sheet  
Proposal  
Number 104  
\$62,304.92  
Potential net cost  
\$38,304.92**



Proposed - night time view

**Score Sheet  
Proposal  
Number 104  
\$62,304.92  
Potential net cost  
\$38,304.92**